

Wilderness Scout and Wilderness



Try cleaning a string of large mouth bass in a hotel sink.



Travel Trailers and Fifth Wheels

Smooth Fiberglass Walls (Wilderness) | Functional Floor Plans | Appealing Décors | Superior Construction | Name Brand Components



The Pantry holds snacks, cereal and more on adjustable shelves. That means you can pack enough food to feed your family, and the friends the kids bring over.



The Galley is equipped with trusted brand name appliances you can depend on. Like the big Dometic® double-door refrigerator, the Magic Chef® 3-burner stove with oven, and the Atwood® water heater.



The Entertainment Center with available LCD TV and DVD Player lets you put on a movie when the kids need downtime. (Or you need a break from entertaining them.)

Enjoy old-school camping in the forest. But without the flame-throwing camp stove, rain-soaked sleeping bag, or scary public restrooms.

Wilderness 270FQS shown in Tumbled Stone interior décor with Clear Oak wood finish.

The Living Room/Dinette Area brings camping comfort to a new level, with appealing décor and rich fabrics that are surprisingly durable and easy to clean. And rather than build our own furniture, we furnished Wilderness with superior Flexsteel® furniture with a lifetime warranty on the frame.



The Sofa Bed is the place everybody wants to lounge. At night, it folds down into a comfy bed for two – be sure to set the alarm clock so you don't miss sunrise fishing.





The Shirt Ward provides a place to hang those manly plaid shirts, while the nightstand holds your macho mug of hot cocoa.



The Overhead Storage holds extra clothing, campground guidebooks or fly tying supplies behind its attractive glass doors.



The Wardrobe keeps your clothes neat with a slotted rack that holds full-size hangers. Because camping is not an excuse to look like Sasquatch.

It's tough to be "one with nature" in a hotel room, and tent camping is often no picnic. That's where Wilderness® comes in, with functional floor plans that suit your family and your lifestyle. It's like catching your fish and eating them, too.

The Master Bedroom feels just as comfy as yours at home. After a long day on the river, you can float away on the cushy queen-size bed with innerspring mattress. The other campers can retire to the available single or double bunkhouse. (Select models.)



The Bathroom with Shower offers the very best thing about the Wilderness: Your personal bathroom with a toilet, sink, medicine cabinet and a hot shower is always just a step away.



The Entry Assist Handle helps big and little campers get in and out easier. And it folds flat when you're on the road.



The Pass-Through Storage (most models) is perfect for oversized items like your fishing poles, camp chairs and cooler. And it's illuminated, so you don't have to rely on the stars to get your gear at night.



The Under-Dinette Storage is accessible from the outside or the inside of your Wilderness. So it's perfect for storing your tackle box.

You've got stuff? We've got space. From the inside storage compartments to the pass-through storage, Wilderness has the room to store lots of stuff families need (or want) when camping.

**WILDERNESS SCOUT.
EXPLORE THE GREAT WIDE OPEN ON A LIMITED BUDGET.**

When you want to enjoy the forest without parting with too much green, Wilderness Scout is a great choice. You'll enjoy a nice array of features, and it's built with the same high-quality that Fleetwood is famous for. We wouldn't put the Wilderness name on anything less.



Drawing is for illustrative purposes only to highlight aspects of Wilderness Scout construction. Actual RV design depends on model and is subject to change.

1. **ENGINEERED RADIUSED CEILING TRUSS** – Helps to ensure strength, water runoff and reduced weight.
2. **IN-CEILING AIR CONDITIONING DUCT** – Better distributes cool air.
3. **R7 FIBERGLASS INSULATION** – As in your home, helps to ensure interior comfort in every season.
4. **ONE-PIECE SEAMLESS SYNTHETIC RUBBER ROOF MEMBRANE** – Provides the ideal weather seal and is warranted for 12 years.
5. **INTERIOR WALL PANEL** – Features a durable, easy-to-clean, decorative vinyl.
6. **ARMSTRONG® FLOORING** – Durable, easy to clean from the best name in residential flooring.
7. **REINFORCED CAMBERED STEEL CHASSIS** – Provides optimal strength, durability, and towing performance.
8. **ENCLOSED CHASSIS** – Is a durable weather barrier (available).
9. **OSB ENGINEERED ROOF SUBSTRATE** – Is designed to maximize strength, is sealed to provide moisture resistance and provides a solid backbone for the synthetic rubber roof construction.
10. **2" x 3" FLOOR JOIST** – Allows for the placement of in-floor furnace ducting without compromising structural integrity.
11. **ENGINEERED 5/8" OSB FLOORING** – Provides the dependable decking needed to ensure an adequate foundation. Further stability is added by interlocking these sheets using "tongue and groove" construction.
12. **2" x 2" SIDEWALL STUDS 16" ON CENTER** – Utilizing residential framing methods, this is the structural component of our sidewall construction.
13. **.024" ALUMINUM SIDING** – Complete with a baked-on enamel paint, this aluminum siding offers rigidity while still being affordable.

Exterior Graphics Package offers clean, bold styling and still looks like a million bucks even after lots of long weekends.



FIBERGLASS CONSTRUCTION SETS WILDERNESS APART.

Competitors just can't match the quality of Wilderness' construction. Wilderness is built with strong, aluminum-framed, laminated fiberglass exterior sidewalls. Not usually found at this price, they provide insulation and rigidity. The quality continues inside, where we use solid hardwood cabinet doors, and seamless vinyl flooring covering the entire floor (not just the parts you can see). This attention to detail creates superior construction, a polished look and an unbeatable value for the money.



Drawing is for illustrative purposes only to highlight aspects of Wilderness construction. Actual RV design depends on model and is subject to change.

Cube Speakers in the living room give your camping trip a soundtrack. They're connected to the standard AM/FM/CD stereo and available DVD and MP3 compatible player.



The Enclosed Chassis is standard on Wilderness and available on Scout. No need to migrate to warmer climates. The enclosed chassis allows heating the holding tanks to help prevent freezing in colder weather.



1. **ENGINEERED RADIUSED CEILING TRUSS** – Helps to ensure strength, water runoff and reduced weight.
2. **IN-CEILING AIR CONDITIONING DUCT** – Better distributes cool air.
3. **R7 FIBERGLASS INSULATION** – As in your home, helps to ensure interior comfort in every season.
4. **ONE-PIECE SEAMLESS SYNTHETIC RUBBER ROOF MEMBRANE** – Provides the ideal weather seal and is warranted for 12 years.
5. **INTERIOR WALL PANEL** – Features a durable, easy-to-clean, decorative vinyl.
6. **ARMSTRONG® FLOORING** – Durable, easy to clean from the best name in residential flooring.
7. **REINFORCED CAMBERED STEEL CHASSIS** – Provides optimal strength, durability, and towing performance.
8. **1 1/2" ALUMINUM TUBING** – Lightweight, structural studs blend proven framing methods with technologically superior materials.
9. **HIGH-DENSITY BLOCK FOAM INSULATION** – Is custom cut to ensure maximum structure and insulation value.
10. **SMOOTH GLOSS FIBERGLASS EXTERIOR SIDING** – This glossy surface is easy-to-clean and adds beauty and structural integrity.
11. **WOOD SUBSTRATE** – Adds structural reinforcement to the exterior fiberglass panel.
12. **ENCLOSED CHASSIS** – Is a durable weather barrier.
13. **OSB ENGINEERED ROOF SUBSTRATE** – Is designed to maximize strength, is sealed to provide moisture resistance and provides a solid backbone for the synthetic rubber roof construction.
14. **2" x 3" FLOOR JOIST** – Allows for the placement of in-floor furnace ducting without compromising structural integrity.
15. **ENGINEERED 5/8" OSB FLOORING** – Provides the dependable decking needed to ensure an adequate foundation. Further stability is added by interlocking these sheets using "tongue and groove" construction.
16. **2" x 2" STUDS 16" ON CENTER (FRONT AND REAR SECTION)** – Utilizing residential framing methods, this is the structural component of our front and rear construction.
17. **AVAILABLE MOLDED FRONT CAP** – Improved aerodynamics and styling.



Experience fabulous scenery. Inside and out. Created by professional interior designers, you could call Wilderness "the great indoors." With beautiful fabrics and warm woods, the appealing décor makes your camping trip even more scenic.

INTERIOR DÉCOR CHOICES

- A** SOFA, DINETTE CUSHIONS **B** SWIVEL ROCKER, DINETTE CUSHIONS (WILDERNESS ONLY), THROW PILLOW
C BEDSPREAD, PILLOW SHAMS, HEADBOARD **D** PILLOW SHAMS



CLEAR OAK

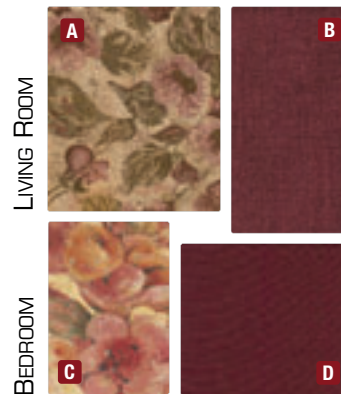
COOL SPRINGS



TUMBLLED STONE

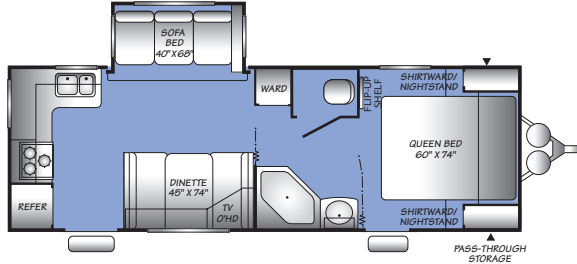


TRUMPET VINE

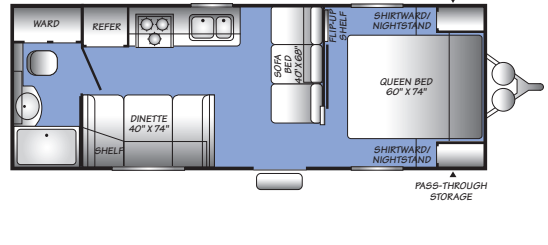


WILDERNESS SCOUT TRAVEL TRAILER FLOOR PLANS

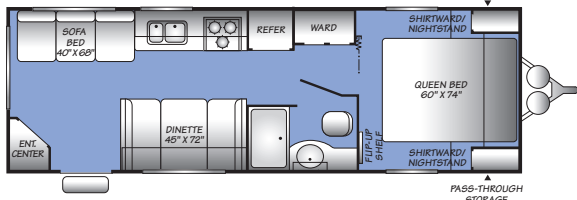
240RKS
Single Slide-Out
Sleeps 6*



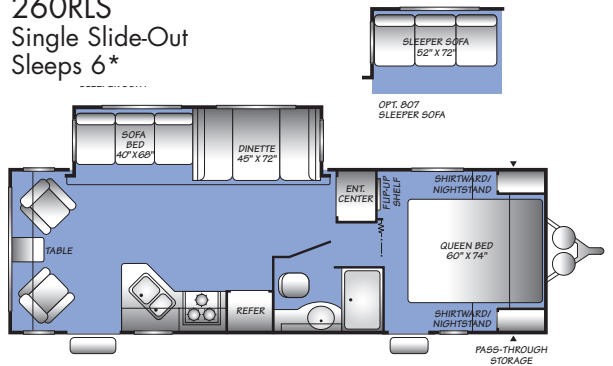
250FQ
Sleeps 6*



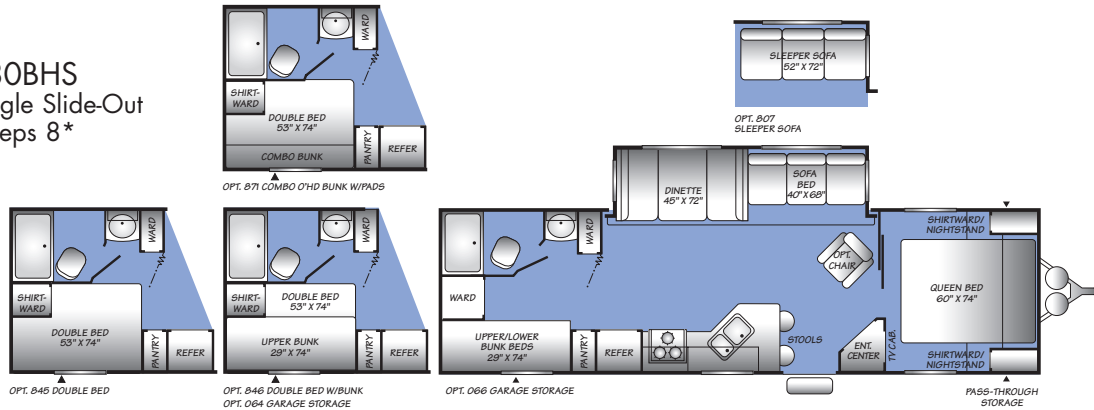
240RL
Sleeps 6*



260RLS
Single Slide-Out
Sleeps 6*



280BHS
Single Slide-Out
Sleeps 8*



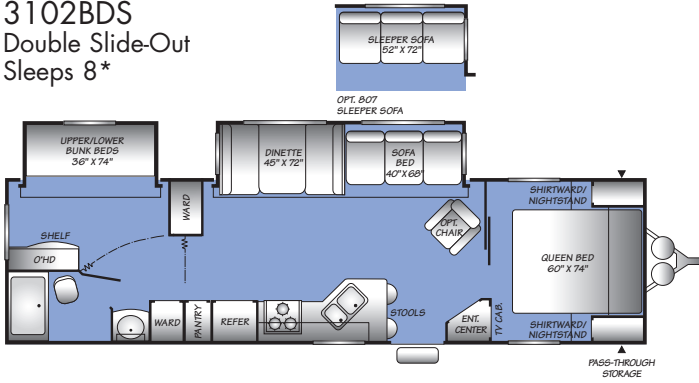
▲ = Exterior Storage

*Sleeping capacity is a variable number and is affected by items such as size of occupant, options and floor plan. Some models are not available in all areas of the country. Please see your local dealer for model availability.

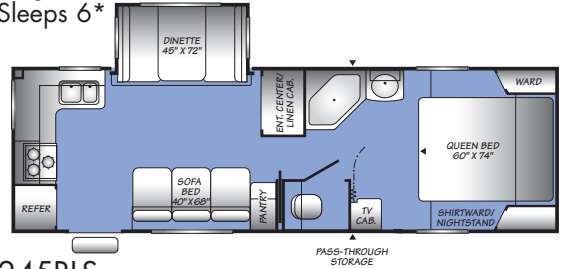
WILDERNESS SCOUT TRAVEL TRAILER FLOOR PLANS

WILDERNESS SCOUT FIFTH WHEEL FLOOR PLANS

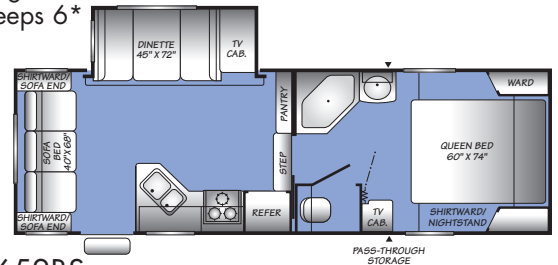
3102BDS
Double Slide-Out
Sleeps 8*



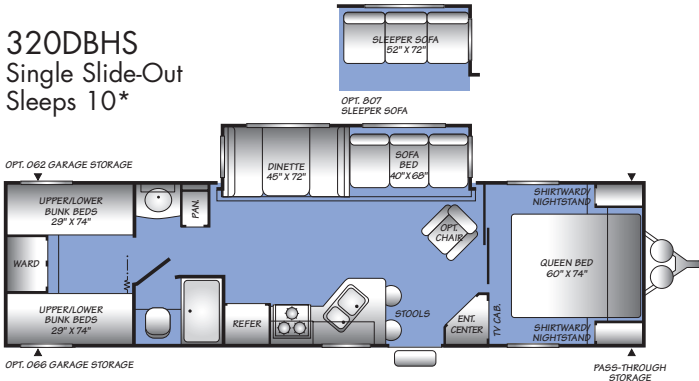
245RKS
Single Slide-Out
Sleeps 6*



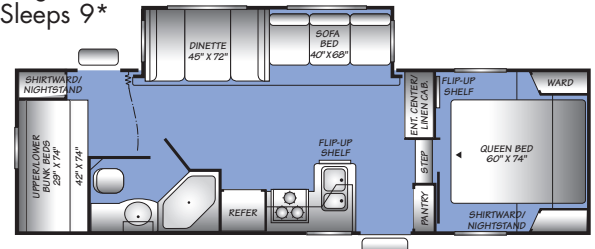
245RLS
Single Slide-Out
Sleeps 6*



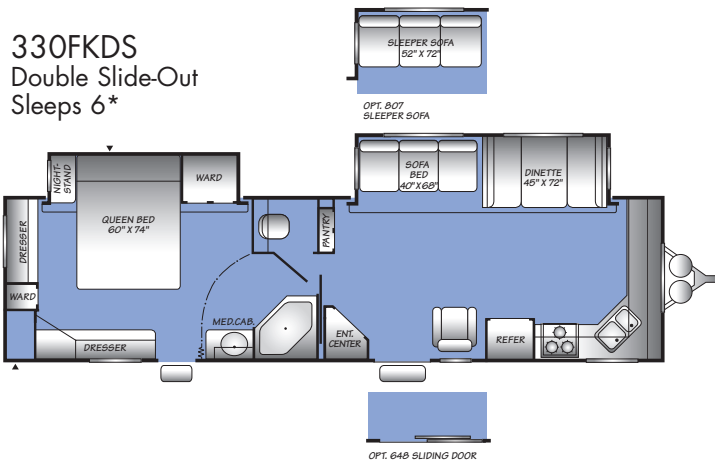
320DBHS
Single Slide-Out
Sleeps 10*



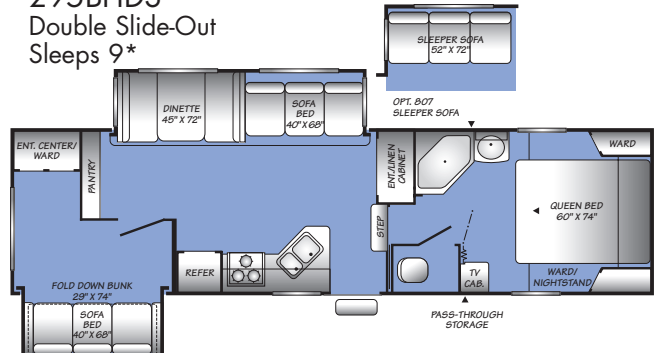
2652BS
Single Slide-Out
Sleeps 9*



330FKDS
Double Slide-Out
Sleeps 6*

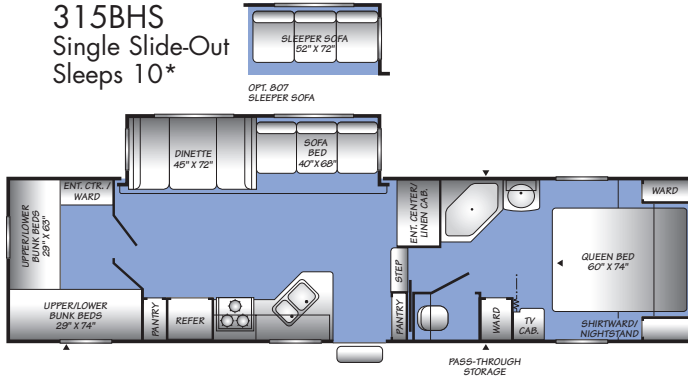


295BHDS
Double Slide-Out
Sleeps 9*

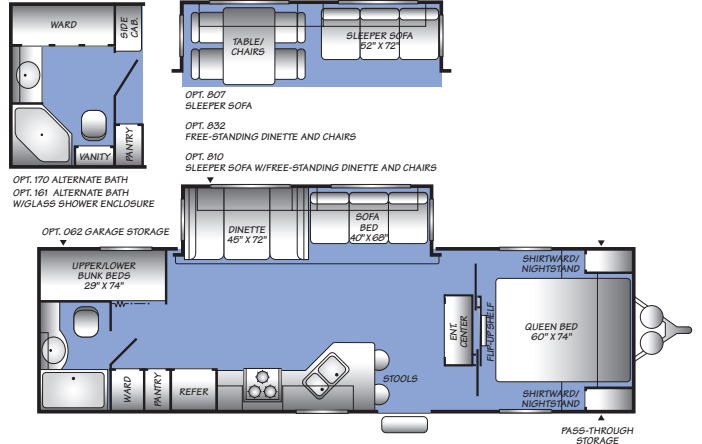


WILDERNESS TRAVEL TRAILER FLOOR PLANS

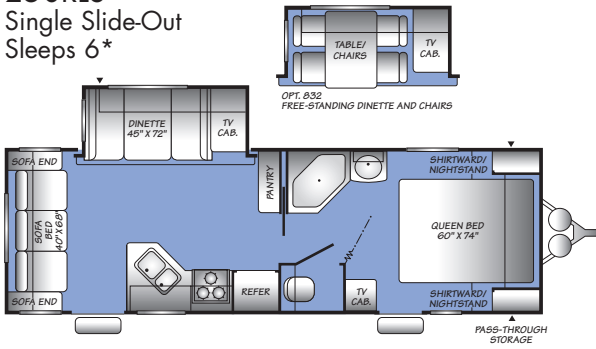
315BHS
Single Slide-Out
Sleeps 10*



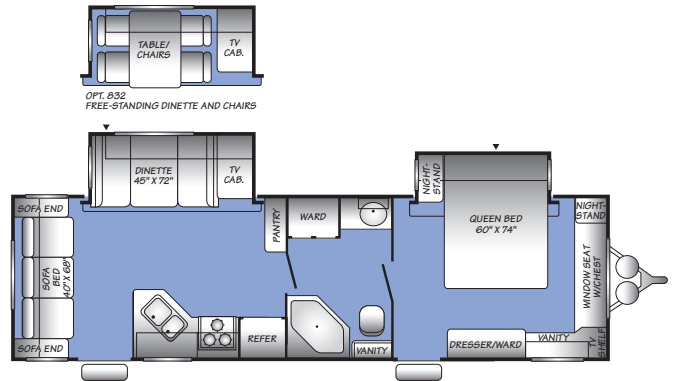
280FQS
Single Slide-Out
Sleeps 8*



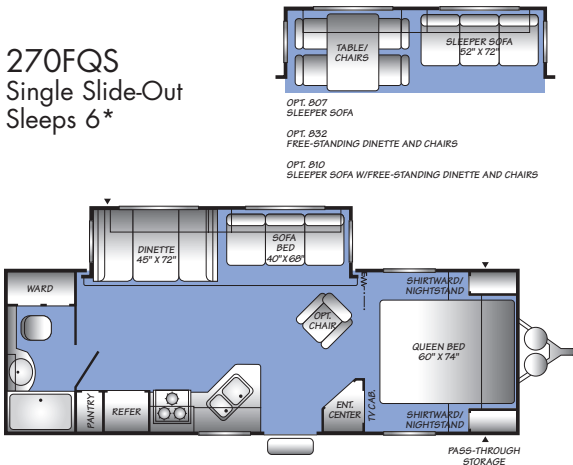
250RLS
Single Slide-Out
Sleeps 6*



280RLDS
Double Slide-Out
Sleeps 6*



270FQS
Single Slide-Out
Sleeps 6*

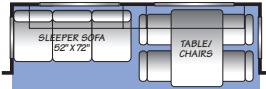
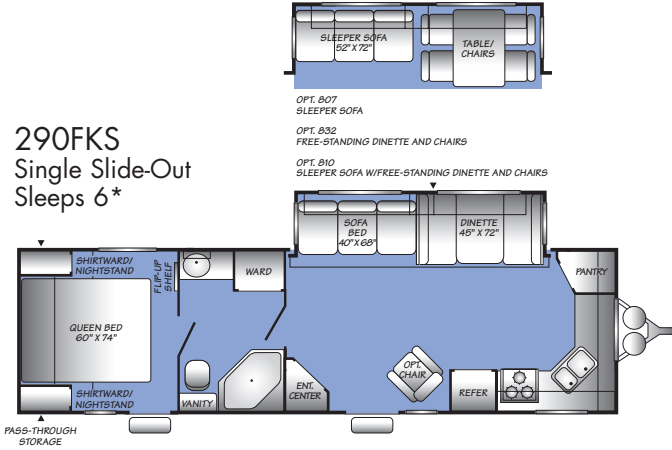


*Sleeping capacity is a variable number and is affected by items such as size of occupant, options and floor plan. Some models are not available in all areas of the country. Please see your local dealer for model availability.

▲ = Exterior Storage

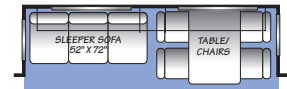
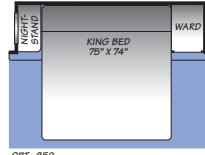
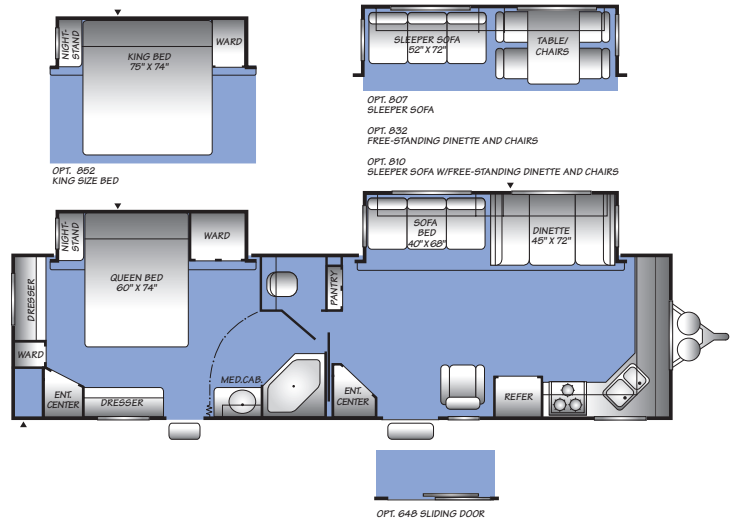
WILDERNESS TRAVEL TRAILER FLOOR PLANS

290FKS
Single Slide-Out
Sleeps 6*



OPT. B07
SLEEPER SOFA
OPT. B32
FREE-STANDING DINETTE AND CHAIRS
OPT. B10
SLEEPER SOFA W/FREE-STANDING DINETTE AND CHAIRS

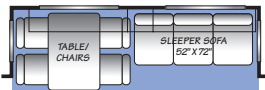
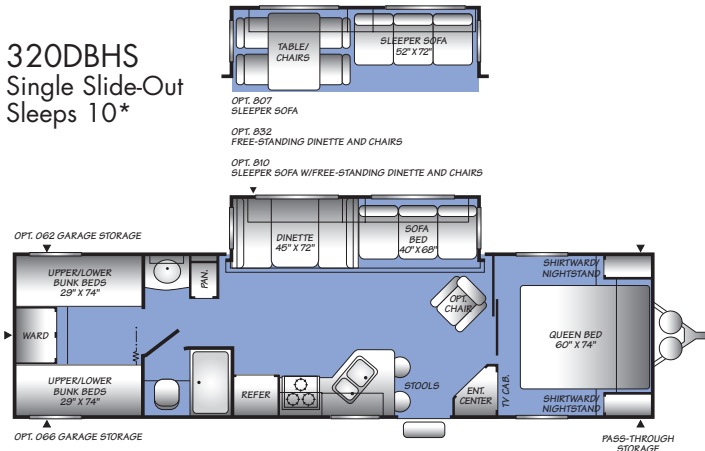
330FKDS
Double Slide-Out
Sleeps 6*



OPT. B52
KING SIZE BED
OPT. B07
SLEEPER SOFA
OPT. B32
FREE-STANDING DINETTE AND CHAIRS
OPT. B10
SLEEPER SOFA W/FREE-STANDING DINETTE AND CHAIRS

OPT. 649 SLIDING DOOR

320DBHS
Single Slide-Out
Sleeps 10*



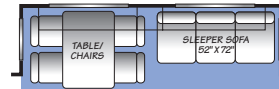
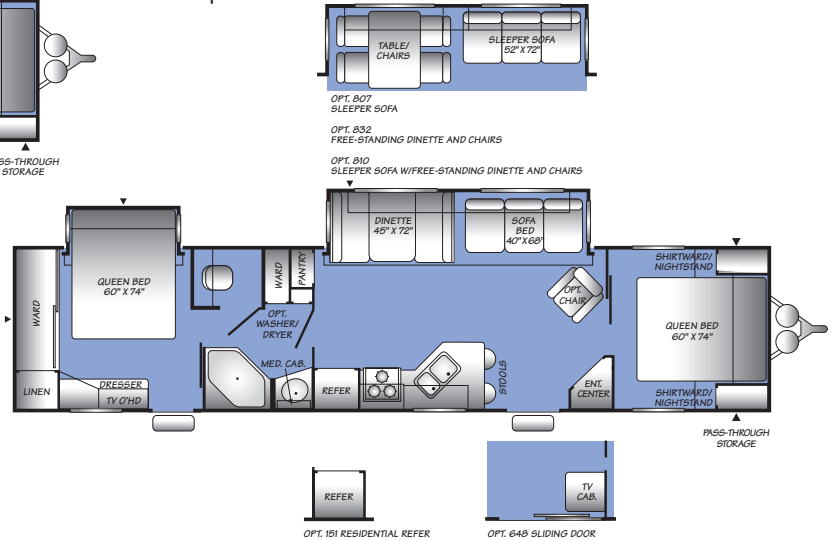
OPT. B07
SLEEPER SOFA
OPT. B32
FREE-STANDING DINETTE AND CHAIRS
OPT. B10
SLEEPER SOFA W/FREE-STANDING DINETTE AND CHAIRS

OPT. 062 GARAGE STORAGE

OPT. 066 GARAGE STORAGE

PASS-THROUGH STORAGE

3902BDS
Double Slide-Out
Sleeps 8*



OPT. B07
SLEEPER SOFA
OPT. B32
FREE-STANDING DINETTE AND CHAIRS
OPT. B10
SLEEPER SOFA W/FREE-STANDING DINETTE AND CHAIRS

OPT. 151 RESIDENTIAL REFER

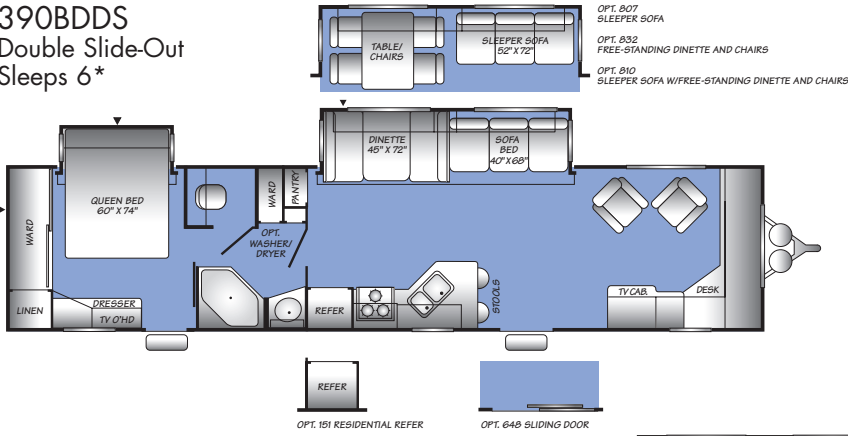
OPT. 649 SLIDING DOOR

*Sleeping capacity is a variable number and is affected by items such as size of occupant, options and floor plan. Some models are not available in all areas of the country. Please see your local dealer for model availability.

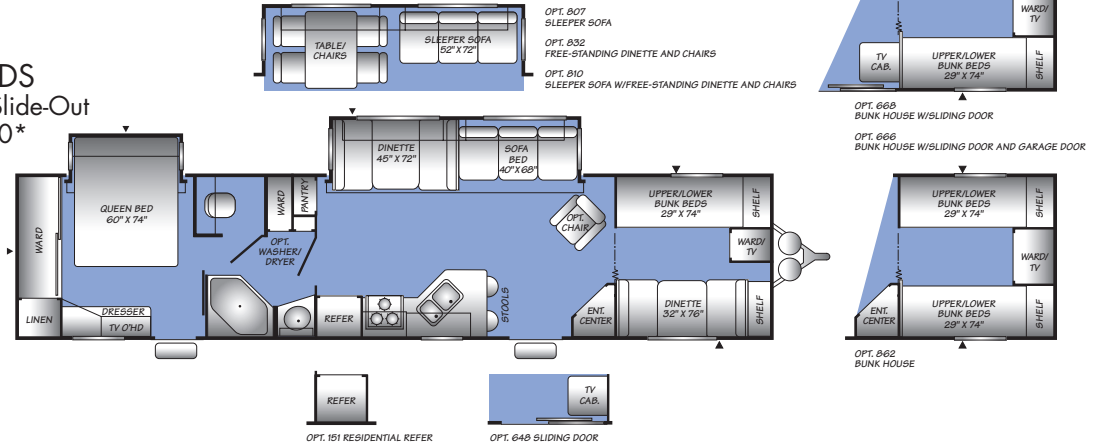
▲ = Exterior Storage

WILDERNESS TRAVEL TRAILER FLOOR PLANS

390BDDS
Double Slide-Out
Sleeps 6*

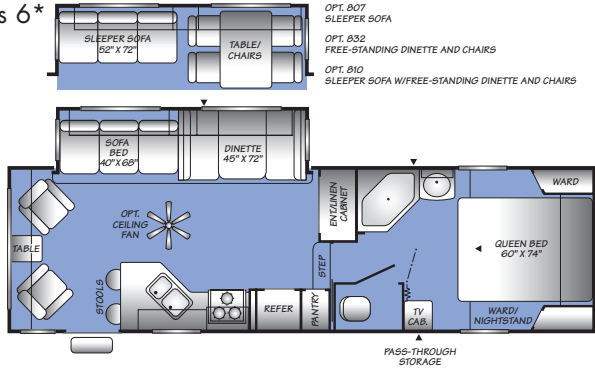


390BHDS
Double Slide-Out
Sleeps 10*

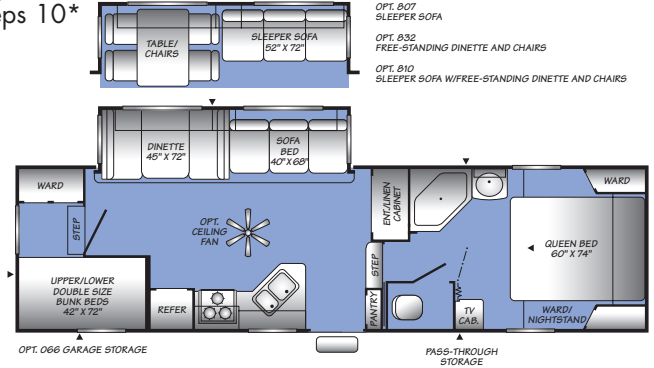


WILDERNESS FIFTH WHEEL FLOOR PLANS

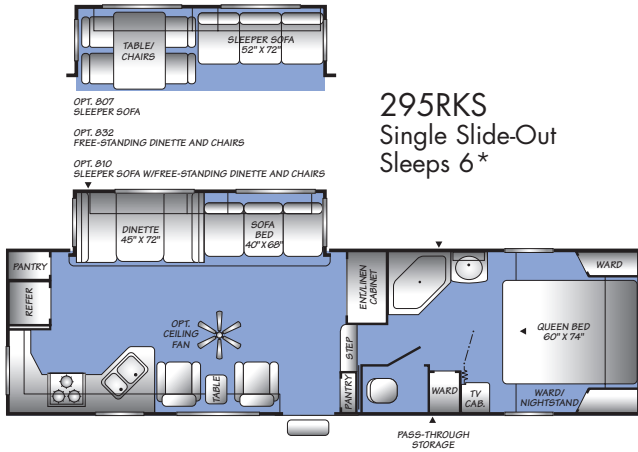
285RLS
Single Slide-Out
Sleeps 6*



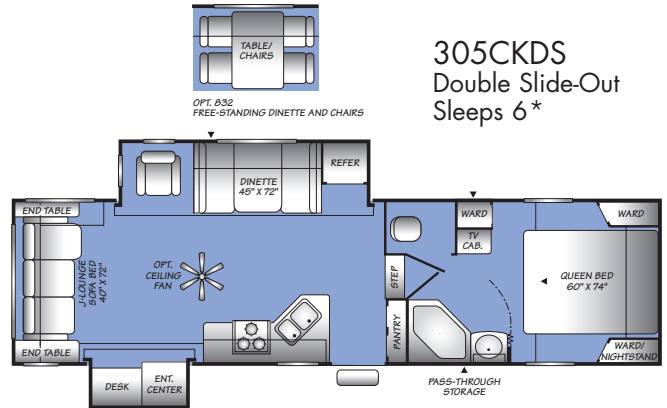
2952BS
Single Slide-Out
Sleeps 10*



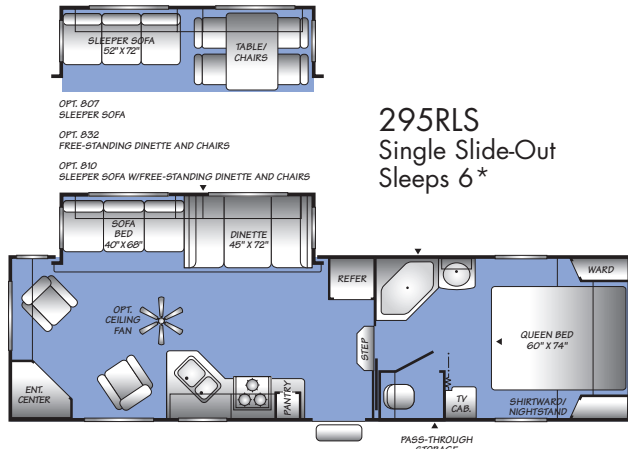
WILDERNESS FIFTH WHEEL FLOOR PLANS



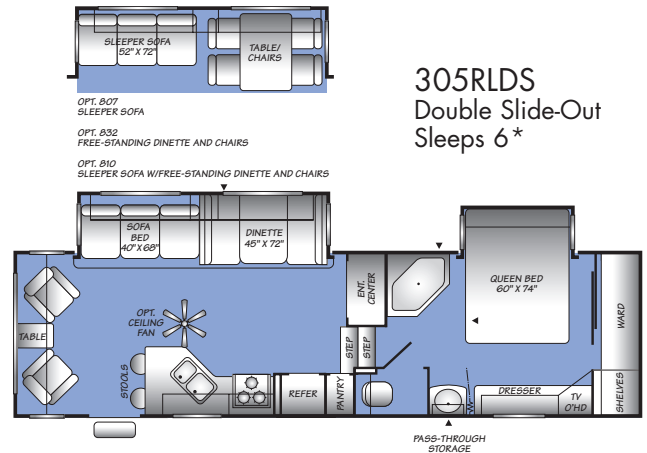
295RKS
Single Slide-Out
Sleeps 6*



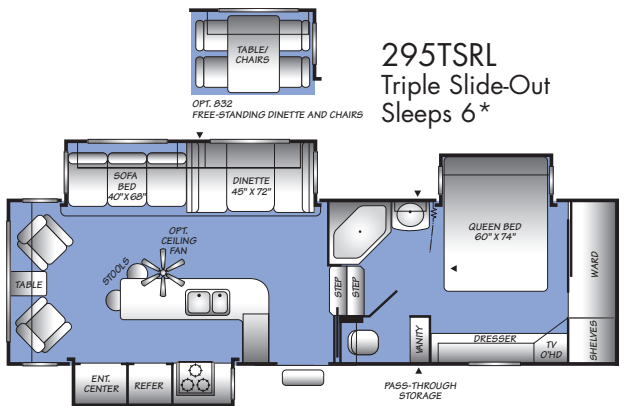
305CKDS
Double Slide-Out
Sleeps 6*



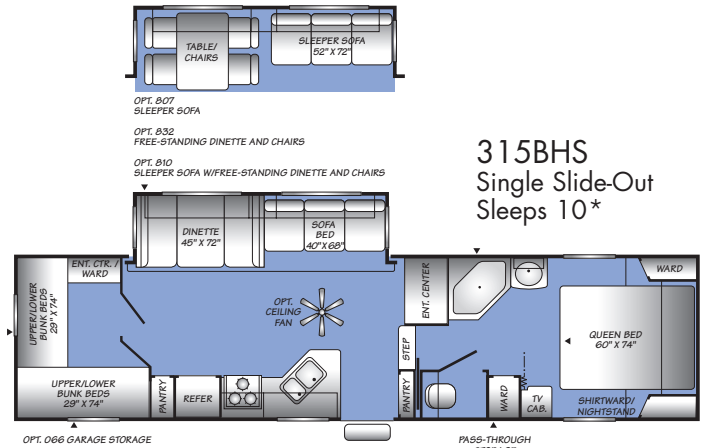
295RLS
Single Slide-Out
Sleeps 6*



305RLDS
Double Slide-Out
Sleeps 6*



295TSRL
Triple Slide-Out
Sleeps 6*



315BHS
Single Slide-Out
Sleeps 10*

*Sleeping capacity is a variable number and is affected by items such as size of occupant, options and floor plan. Some models are not available in all areas of the country. Please see your local dealer for model availability. ▲ = Exterior Storage

WILDERNESS SCOUT AND WILDERNESS - FEATURES

	SCOUT	WILDERNESS		SCOUT	WILDERNESS		SCOUT	WILDERNESS		SCOUT	WILDERNESS
INTERIOR											
• Raised 6 Panel Lavy Door	S	S	• Magic Chef® 3-Burner (1-High-Output) 22" Range w/Oven	S	S	• Propane Detector/Alarm	S	S	STORAGE	S	S
• AM/FM Stereo/CD Player w/6 Surround Sound Ceiling Mount Speakers, (4) Living Room, (2) Bedroom, & Sub Woofer	S	S	• Metal Hi-Rise Faucet	S	S	• Smoke Detector/Alarm	S	S	• Finished Luggage Door Openings	S	S
• AM/FM Stereo/CD Player w/2 Living Room Ceiling Mount Recessed Speakers	S		• Pantry w/Adjustable Shelves	S	S	EXTERIOR	S	S	• Locking Lined Luggage Compartments w/Lights	S	S
• AM/FM Stereo/CD with DVD & MP3 Player, 6 Surround Sound Ceiling Mount Speakers, (4) Living Room, (2) Bedroom, & Sub Woofer	O		• Pots & Pans Drawer	S	S	• 120V Patio Receptacle	S	S	• Radius Luggage Doors	S	S
• AM/FM Stereo/CD with DVD & MP3 Player, 6 Surround Sound Ceiling Mount Speakers, (4) Living Room, (2) Bedroom, & Sub Woofer	O		• Range Hood w/12V Light & Exhaust Fan	S	S	• 30" Entry Door	S	S	• Exterior Garage Storage (Select Models)	O	O
• Decorative Wall Mirrors	S		• Residential Height Countertops	S	S	• Dual 30 lb. Propane Cylinders w/Regulator & Auto-Changeover	S	S			
• HydroFlame Forced Air, Direct Spark Ignition Furnace w/Thermostat	S	S	• Sink Cover/Cutting Board	S	S	• Extended Pin Box & Power Landing Gear (5th Wheels)	S	S	INTERIOR VALUE PACKAGE	O	O
• Oversized Light Switches	S	S	• Spice Rack	S	S	• Front & Rear Colored Skirt End Caps	S	S	• 13,500 BTU Air Conditioner	X	X
• Phone Jack & Satellite Ready	S	S	• Toe Kick	S	S	• Hitch Light	S	S	• 3 Bulb Vanity Light	X	X
• Slide-Out End Windows	S	S	• Upgraded Vinyl Flooring	S	S	• Laminated Sidewalls	S	S	• 6-Gallon Propane DSI (Direct Spark Ignition)	X	X
• Solid State Converter w/Built-In Battery Charger	S	S				• Molded Wheel Well Skirts (Color Coordinated to Match Radius Skirt)	S	S	• Water Heater	X	X
• 6 Gal. Propane/110V DSI (Direct Spark Ignition) Water Heater	O	O	BEDROOM			• Phone & Satellite Jacks	S	S	• ABS Tub/Shower Walls	X	X
• Water Heater Bypass	S	S	• 350 lb. Fixed Bunk Weight Rating (150 lb. Weight Rating for Combo Bunks)	S	S	• Quick Drain Holding Tank (Fresh Water)	S	S	• Additional Sink Cover	X	X
• 13,500 BTU Air Conditioner	O	S	• Angled Front Bedroom Cabinetry (Mid Profile 5th Wheels)	S	S	• Radius Truss Roof Rafters	S	S	• Cable TV Hook-Up	X	X
• Free Standing Chair (Most Models)	O	S	• Built-In Bedroom TV Viewing Area	S	S	• Split Tank Propane System (5th Wheels)	S	S	• Microwave w/Electronic Touch Pad	X	X
• Flat Panel Refrigerator Insert (3 Panel)	O		• Innerspring Mattress	S	S	• Welded, Dual Battery Rack (Travel Trailer Models Only)	S	S	• Mortise & Tenon Cathedral Arch Flat Panel Cabinet Doors	X	X
• Raised Panel Refrigerator Insert (6 Panel)	O		• Lift-Up Bed Platform w/Below Bed Storage (Most Models)	S	S	• Fiberglass Exterior Sidewalls	O	S	• Mortise & Tenon Cathedral Arch Raised Panel Cabinet Doors	X	X
• Slide-Out Enhancement Package (Sofa Overhead Cabinets & Large Dinette Window)	S		• Miniblinds Throughout (Except Bunk Windows)	S	S	• Adjustable Hitch Coupler	O	O	• Range Cover	X	X
			• Wardrobes Accommodate Residential Size Clothes Hangers	S	S	• Exterior Shower	O	O	• Swivel Reading Lights in Bedroom	X	X
			• Bedroom Carpet (Most Models)	O	S	• Roof Ladder	O	O	• Water Purifier	X	X
			• Living Room Carpet (Most Models)	O	O	• Spare Tire w/Cover	O	O	• Porcelain Toilet	X	X
			• Upgraded Mattress	O	O	• Black Tank Flush System	O	O	• Porcelain Toilet w/ Sprayer	X	X
						• Enclosed Chassis	O	S			
			BATHROOM			• Extreme Edition Package (Extra Insulation in Floor & Ceiling w/Astrofoil in Slide Floor & Around Holding Tanks)	O	O	EXTERIOR VALUE PACKAGE	O	O
			• 12V Power Exhaust Roof Vent	S	S				• 5th Wheel Power Landing Gear	X	X
			• Medicine Cabinet w/Mirrored Door	S	S				• Double Thickness Insulation	X	X
			• Removable Wire Basket (Most Models)	S					• Fiberglass Exterior	X	X
			• ABS Tub/Shower Enclosure	S	S	BODY STRUCTURE			• Enclosed Chassis	X	X
			• Wall-Switched Ceiling Light	S	S	• Cambered Chassis	S	S	• Heated & Enclosed Holding & Water Tanks	X	X
			• Bathroom Skylight	O	O	• I-Beam Main Rails	S	S	• Enclosed and Heated Water Tank Compartment	X	X
						• One-Piece Seamless Roof	S	S	• Laminated Walls	X	X
			SAFETY/CONVENIENCE						• Lend-a-Hand Assist Handle	X	X
			• Carbon Monoxide Detector/Alarm	S	S	SAFETY/CONVENIENCE			• Mud Flaps	X	X
			• Entry Assist Handle	S	S	• 120V GFI Circuit Protection (Galley/Bath/Patio)	S	S	• Patio Awning	X	X
			• Fire Extinguisher	S	S	• 4-Wheel Electric Brakes	S	S	• Protected Copper Lines	X	X
						• Break-Away Emergency Disconnect Brake	S	S	• Security Light	X	X
						• Wall Mounted Systems Monitor Panel	S	S	• Stabilizer Jacks (Slide-Out Models)	X	X
									• Tinted Safety Glass Windows	X	X
									• TV Antenna	X	X

S = Standard O = Optional

WILDERNESS CLASSIC WEIGHTS AND MEASUREMENTS

TRAVEL TRAILERS	240RKS	240RL	250FQ	260RLS	
WEIGHTS					
GVWR (lbs) ¹	7,500	6,700	6,500	8,600	
Gross Dry Weight (lbs) ^{2,6}	5,455	4,698	4,401	5,981	
Cargo Carrying Capacity (lbs) ^{3,6}	2,045	2,002	2,099	2,619	
Hitch Dry Weight (lbs) ^{2,6,9}	750	604	577	828	
DIMENSIONS & CAPACITIES					
Length (Feet & Inches) ^{4,6,8}	27' 9"	27' 11"	25' 11"	29' 0"	
Height (Feet & Inches) ^{5,6}	10' 1"	9' 11"	9' 11"	10' 2"	
Fresh Water Holding Tank (gal) ^{6,7}	50	50	50	50	
Grey Water Holding Tank (gal) ^{6,7}	40	40	40	40	
Black Water Holding Tank (gal) ^{6,7}	40	40	40	40	
Propane Capacity (lbs) ^{6,7}	60	60	60	60	
Tire Size (Load Range)	ST205/75R 14C	ST205/75R 14C	ST205/75R 14C	ST225/75R 15C	
TRAVEL TRAILERS	280BHS	3102BDS	320DBHS	330FKDS	
WEIGHTS					
GVWR (lbs) ¹	9,000	9,950	9,600	10,700	
Gross Dry Weight (lbs) ^{2,6}	5,834	7,013	6,408	N/A	
Cargo Carrying Capacity (lbs) ^{3,6}	3,166	2,937	3,192	N/A	
Hitch Dry Weight (lbs) ^{2,6,9}	813	741	882	N/A	
DIMENSIONS & CAPACITIES					
Length (Feet & Inches) ^{4,6,8}	32' 0"	33' 11"	33' 11"	34' 10"	
Height (Feet & Inches) ^{5,6}	10' 2"	10' 4"	10' 2"	10' 4"	
Fresh Water Holding Tank (gal) ^{6,7}	50	50	50	50	
Grey Water Holding Tank (gal) ^{6,7}	40	40	40	40/21	
Black Water Holding Tank (gal) ^{6,7}	40	40	40	40	
Propane Capacity (lbs) ^{6,7}	60	60	60	60	
Tire Size (Load Range)	ST225/75R 15C	ST225/75R 15D	ST225/75R 15D	ST225/75R 15D	
FIFTH WHEEL	245RKS	245RLS	2652BS	295BHDS	315BHS
WEIGHTS					
GVWR (lbs) ¹	9,700	9,500	9,950	11,300	11,700
Gross Dry Weight (lbs) ^{2,6}	6,760	6,557	6,914	N/A	N/A
Cargo Carrying Capacity (lbs) ^{3,6}	2,940	2,943	3,036	N/A	N/A
Hitch Dry Weight (lbs) ^{2,6,9}	1,247	1,116	1,530	N/A	N/A
DIMENSIONS & CAPACITIES					
Length (Feet & Inches) ^{4,6,8}	28' 2"	27' 7"	29' 8"	33' 0"	34' 11"
Height (Feet & Inches) ^{5,6}	11' 8"	11' 8"	11' 8"	11' 10"	11' 9"
Fresh Water Holding Tank (gal) ^{6,7}	50	40	50	40	50
Grey Water Holding Tank (gal) ^{6,7}	40	40/21	40	40/40	40/40
Black Water Holding Tank (gal) ^{6,7}	40	40	40	40	40
Propane Capacity (lbs) ^{6,7}	60	60	60	60	60
Tire Size (Load Range)	ST225/75R 15C	ST225/75R 15C	ST225/75R 15C	ST225/75R 15D	ST225/75R 15D

- GVWR (Gross Vehicle Weight Rating) is the maximum permissible weight of this trailer when fully loaded. It includes all weight at the trailer axle(s) and tongue or pin.
- All dry weights are based on the standard model and do not include optional features or equipment.
- Cargo Carrying Capacity (CCC) is determined by subtracting Gross Dry Weight from GVWR. Cargo Carrying Capacity (CCC) includes all fluids, optional features, equipment, and personal cargo.
- Length taken from hitch or pin box to rear bumper (excludes accessories). Trailer length includes hitch; fifth wheel includes standard pin box.
- Actual height may be lower, based on option offerings. Consult with your dealer to obtain actual height for the unit you are interested in.
- Approximate.
- Water weight equals 8.3 lbs per gallon. Propane weight equals 4.2 lbs per gallon.
- Add 10" if equipped with optional spare tire and carrier.
- Hitch weights are dependent upon how the trailer is equipped with options, on-board cargo and tank fluid levels. Actual hitch weights may be higher or lower than shown. It is recommended that the tow vehicle and hitch for your trailer have sufficient capacity to accommodate actual usage.

N/A = Not available at the time of printing.

* = Estimated weights

IMPORTANT—PLEASE READ
Product information, photography and illustrations included in this publication were as accurate as possible at the time of printing. For further product information and changes, please visit our website at www.fleetwoodrv.com or contact your local Fleetwood dealer. Prices, materials, design and specifications are subject to change without notice. All weights, fuel, liquid capacities and dimensions are approximate. Fleetwood has designed its recreational vehicles to provide a variety of uses for customers. Each vehicle features optimal seating, sleeping, storage and fluid capacities. The user is responsible for selecting the proper combination of loads (i.e., equipment, fluids, cargo, etc.) to ensure that the vehicle's capacities are not exceeded.

WILDERNESS WEIGHTS AND MEASUREMENTS

TRAVEL TRAILERS	250RLS	270FQS	280FQS	280RLDS	290FKS			
WEIGHTS								
GVWR (lbs) ¹	7,900	8,000	9,200	9,200	9,200			
Gross Dry Weight (lbs) ^{2,6}	5,931	6,128	6,567	7,235	6,758			
Cargo Carrying Capacity (lbs) ^{3,6}	1,969	1,872	2,633	1,965	2,442			
Hitch Dry Weight (lbs) ^{2,6,9}	763	850	805	1,156	943			
DIMENSIONS & CAPACITIES								
Length (Feet & Inches) ^{4,6,8}	28' 11"	27' 10"	31' 10"	31' 10"	31' 11"			
Height (Feet & Inches) ^{5,6}	10' 2"	10' 2"	10' 2"	10' 2"	10' 2"			
Fresh Water Holding Tank (gal) ^{5,7}	50	50	50	50	50			
Grey Water Holding Tank (gal) ^{5,7}	40	40	40	40	40/21			
Black Water Holding Tank (gal) ^{5,7}	40	40	40	40	40			
Propane Capacity (lbs) ^{5,7}	60	60	60	60	60			
Tire Size (Load Range)	ST205/75R 15C	ST205/75R 15C	ST225/75R 15C	ST225/75R 15D	ST225/75R 15D			
TRAVEL TRAILERS	320DBHS	330FKDS	3902BDS	390BDDS	390BHDS			
WEIGHTS								
GVWR (lbs) ¹	9,600	10,700	11,300	11,300	11,300			
Gross Dry Weight (lbs) ^{2,6}	7,076	8,051	8,679	8,679	8,679			
Cargo Carrying Capacity (lbs) ^{3,6}	2,524	2,649	2,621	2,621	2,621			
Hitch Dry Weight (lbs) ^{2,6,9}	1,010	1,215	888	888	888			
DIMENSIONS & CAPACITIES								
Length (Feet & Inches) ^{4,6,8}	33' 11"	34' 10"	39' 7"	39' 7"	39' 7"			
Height (Feet & Inches) ^{5,6}	10' 2"	10' 4"	10' 4"	10' 4"	10' 4"			
Fresh Water Holding Tank (gal) ^{5,7}	50	50	50	50	50			
Grey Water Holding Tank (gal) ^{5,7}	40	40/21	40	40	40			
Black Water Holding Tank (gal) ^{5,7}	40	40	40	40	40			
Propane Capacity (lbs) ^{5,7}	60	60	60	60	60			
Tire Size (Load Range)	ST225/75R 15D	ST225/75R 15D	ST225/75R 15D	ST225/75R 15D	ST225/75R 15D			
FIFTH WHEELS	285RLS	2952BS	295RKS	295RLS	295TSRL	305CKDS	305RLDS	315BHS
WEIGHTS								
GVWR (lbs) ¹	9,950	11,300	11,700	11,400	11,500	11,000	11,500	11,700
Gross Dry Weight (lbs) ^{2,6}	7,864	8,166	N/A	8,101	8,747	N/A	8,657	8,527
Cargo Carrying Capacity (lbs) ^{3,6}	2,086	3,134	N/A	3,299	2,753	N/A	2,843	3,173
Hitch Dry Weight (lbs) ^{2,6,9}	1,569	1,398	N/A	1,762	1,918	N/A	1,608	1,598
DIMENSIONS & CAPACITIES								
Length (Feet & Inches) ^{4,6,8}	30' 3"	32' 5"	32' 7"	31' 11"	31' 10"	33' 3"	31' 11"	34' 11"
Height (Feet & Inches) ^{5,6}	11' 8"	11' 9"	12' 0"	11' 9"	12' 7"	12' 0"	12' 5"	11' 10"
Fresh Water Holding Tank (gal) ^{5,7}	40	50	50	50	40	50	50	50
Grey Water Holding Tank (gal) ^{5,7}	40/21	40/40	40/40	40/21	40/21	40/21	40/21	40
Black Water Holding Tank (gal) ^{5,7}	40	40	40	40	40	40	40	40
Propane Capacity (lbs) ^{5,7}	60	60	60	60	60	60	60	60
Tire Size (Load Range)	ST225/75R 15D	ST225/75R 15D	ST225/75R 15D	ST225/75R 15D	ST225/75R 15D	ST225/75R 15D	ST225/75R 15D	ST225/75R 15D

- GVWR (Gross Vehicle Weight Rating) is the maximum permissible weight of this trailer when fully loaded. It includes all weight at the trailer axle(s) and tongue or pin.
- All dry weights are based on the standard model and do not include optional features or equipment.
- Cargo Carrying Capacity (CCC) is determined by subtracting Gross Dry Weight from GVWR. Cargo Carrying Capacity (CCC) includes all fluids, optional features, equipment, and personal cargo.
- Length taken from hitch or pin box to rear bumper (excludes accessories). Trailer length includes hitch; fifth wheel includes standard pin box.
- Actual height may be lower, based on option offerings. Consult with your dealer to obtain actual height for the unit you are interested in.
- Approximate.
- Water weight equals 8.3 lbs per gallon. Propane weight equals 4.2 lbs per gallon.
- Add 10" if equipped with optional spare tire and carrier.
- Hitch weights are dependent upon how the trailer is equipped with options, on-board cargo and tank fluid levels. Actual hitch weights may be higher or lower than shown. It is recommended that the tow vehicle and hitch for your trailer have sufficient capacity to accommodate actual usage.

N/A = Not available at the time of printing.

* = Estimated weights

IMPORTANT—PLEASE READ
Product information, photography and illustrations included in this publication were as accurate as possible at the time of printing. For further product information and changes, please visit our website at www.fleetwoodrv.com or contact your local Fleetwood dealer. Prices, materials, design and specifications are subject to change without notice. All weights, fuel, liquid capacities and dimensions are approximate. Fleetwood has designed its recreational vehicles to provide a variety of uses for customers. Each vehicle features optimal seating, sleeping, storage and fluid capacities. The user is responsible for selecting the proper combination of loads (i.e., equipment, fluids, cargo, etc.) to ensure that the vehicle's capacities are not exceeded.

WHY WILDERNESS?



PASSION

We're truly passionate about the RV lifestyle. Fleetwood was founded by RV enthusiasts, and that tradition continues today.



QUALITY

There's no cutting corners. Skilled craftsmen build every Fleetwood RV for maximum durability and longevity.



SERVICE

Help is nearby. When you need an upgrade or repair, you'll find facilities all across North America and more than 1,100 dealers ready to assist you.



WARRANTY

Exclusive RV Ownercare warranty. See your Fleetwood dealer for details.



TRUST

More people trust Fleetwood. After all, we've spent over 50 years perfecting RVs, earning the loyalty of generations of RVers.

CONTACT US

To locate a dealer near you, visit our website at www.fleetwoodrv.com or call 1-800-444-4905. We can also be contacted at Fleetwood Customer Relations, P.O. Box 1007, Decatur, IN 46733.

FLEETWOOD TRAVELCADE CLUB

As a Fleetwood owner, you're eligible to become a member of the Fleetwood Travelcade Club. It's a perfect way to meet other Fleetwood owners who love to travel across America and share in the RV lifestyle. Call (877) 577-2560 or visit our website at www.fleetwoodrv.com/owners_clubs to learn more and join the fun!

RV OWNERCARE*

See your local dealer for complete details.

IMPORTANT—PLEASE READ

Product information, photography and illustrations included in this publication were as accurate as possible at the time of printing. For further product information and changes, please visit our website at www.fleetwoodrv.com or contact your local Fleetwood dealer. Prices, materials, design and specifications are subject to change without notice. All weights, fuel, liquid capacities and dimensions are approximate. Fleetwood has designed its recreational vehicles to provide a variety of uses for customers. Each vehicle features optimal seating, sleeping, storage and fluid capacities. The user is responsible for selecting the proper combination of loads (i.e.: equipment, fluids, cargo, etc.) to ensure that the vehicle's capacities are not exceeded.

TO OUR CUSTOMERS...

To make sure that you get the maximum satisfaction out of your recreational vehicle purchase, there are several things you should know:

1. Learn all you can about the travel trailer or fifth wheel you're planning to buy. Don't rely on word of mouth. Get the facts about the actual trailer length, width, unloaded weight with options, Gross Vehicle Weight Rating, and Cargo Carrying Capacity. These are usually available in the manufacturer's sales literature or from the Cargo Carrying Capacity Label located in each trailer. Be sure to check this information **before** you decide which unit to buy.

2. Verify the towing capacity of your tow vehicle. If you don't know, or aren't sure, you can ask at your automotive dealership. Be sure to match its tow rating to the loaded (not dry) weight of your trailer. Include the weight of water, additional accessories, clothing, food, and gear. To help Fleetwood travel trailer customers estimate this total weight, our Gross Vehicle Weight Ratings reflect the maximum weight of the trailer when fully loaded for camping. Be sure the weight of the tow vehicle plus the weight of your trailer do not exceed the Gross Combined Weight Rating of the tow vehicle.

Taking these simple steps before you buy will help ensure that your trailer and tow vehicle combination is just what you wanted.

See you on the trail!

Your Local Fleetwood Dealer Is:



treadlightly!
with a good conscience



*For complete info see your Fleetwood dealer.

©2006. Fleetwood Enterprises, Inc. Printed in the U.S.A.
2nd Edition WI07B2, 11/06.

FLEETWOOD
Travel Trailer Division