

Taste. Sophistication. Culture.
And 350 Horses.



2007
EXCURSION
CLASS A DIESEL

 **FLEETWOOD**

Full-Wall Slide | 350 HP Diesel Engine | Beautiful Interiors | Power Platform Construction | Luxury Features Come Standard



EXCURSION

A FLAT-OUT GORGEOUS HOME THAT JUST HAPPENS TO BE ON SIX WHEELS.

Seated in the fabulously decorated living room, you may have to remind yourself that you can have it all and take it with you as you travel down the road. With its stunning interior design, sumptuous finishes and spacious floor plans, Excursion feels like a luxury home in every way.



THE OVERHEAD STORAGE keeps books, board games and clutter hidden away so you can maintain that “model home” look. And they’re deep enough to store larger items like a toaster oven, or even throw pillows when it’s time to make up the bed for overnight guests.



EXCURSION 39V SHOWN IN CINNABAR INTERIOR DÉCOR WITH OPTIONAL LAMINATE FLOORING AND WINDSOR BIRCH WOOD FINISH.



THE ENTERTAINMENT CENTER is as impressive as its surroundings. It includes a 26" Samsung® LCD TV, DVD player, and Dolby® 5.1 theater sound system with front, center and rear speakers plus a subwoofer for the ultimate entertainment experience. The LCD TV and other components are tucked into sleek overhead cabinetry that doesn't take away your living space. (Most models.)



EXCURSION

BIG AND BEAUTIFUL. THANKS TO THE 27-FOOT SLIDE-OUT, THAT IS.

There's a huge 380 square feet of open living space inside Excursion when the full-wall slide is extended (featured in the 39V model). That translates to a roomy, full-featured kitchen, a lavishly spacious living room and a bedroom the size of a hotel suite.



THE PANTRY holds your cereal boxes, canned goods and snacks neatly so they're easy to see when the munchies strike. Select models feature pull-out baskets that can be removed for easy packing, while other models include adjustable shelves.



THE DINETTE accommodates up to six card players, using the pull-out leaf and two coordinating chairs. When the game is over, you can enjoy watching the sunset out the oversized picture window.



THE LOVE SEAT faces the sofa to create a nice conversation area for parties large and small. And the dazzling surroundings make any gathering more enjoyable. (Select models.)



THE GALLEY is equipped with name-brand appliances you find in the finest homes. For example, a GE® convection microwave, a Maytag® 3-burner stove with sealed burners, and a Norcold® four-door refrigerator with ice maker. All with a fashionable finish.



THE CENTRAL VACUUM (optional) tidies your carpet so your home is ready for company – without ever pushing around a heavy motorized vacuum. And the bag from your Dirt Devil® empties from the outside so the dirt stays out.



THE GALLEY WINDOW lets you gaze at the sky while you soap up your dishes. Unless of course, you're admiring the lovely tile backsplash with its sparkling accents.



IN THE BEDROOM SUITE, LUXURY IS STANDARD.

You'll truly appreciate the little luxuries we've provided in your most personal space. Things like the dimmers on the halogen lighting to set the mood. The exquisitely comfortable Restonic® pillow-top mattress. Even the soft, coordinated afghan you can cuddle up in. And you can store it in the spacious overhead storage.



THE TV AND WASHER/DRYER (optional) are both located in the bedroom suite. It's the perfect set-up for folding clean laundry while you watch your favorite show on the 20" LCD TV.





THE BATHROOM gets your day started right. Start with a water massage from the adjustable showerhead, drenched in natural light from the shower's skylight.



THE CEDAR-LINED WARDROBE organizes your clothing with wire shelves that keep your items in place while traveling. And you can check your outfit in the mirrors on the arched, wood-framed doors.



THE BEDROOM LOUNGE AREA might become your favorite space (select models). Get ready for the day at the solid surface vanity with a well-lit mirror to help you look your best. And the lounge area is the perfect place to end your day in the cozy recliner with footrest - just add a good book.



EXCURSION

SOMETIMES, IT'S BETTER TO HAVE FEWER OPTIONS... AND HIGHER STANDARDS.

In Excursion, we've included many amenities standard that our competitors consider to be options. For example, you'll find a color back-up monitor, and the driver and passenger chairs include power adjustments and heat. Because your comfort is not optional.



THE PASSENGER SEAT is covered in supple Ultraleather™ for beauty and long wear. Power adjustments position the seat perfectly for comfortable travel, the seat belt is adjustable to your height, and the electric foot rest lets you put your feet up and relax.



THE RADIO/BACK-UP MONITOR is a dual-purpose unit. It includes a CD player and AM/FM radio that's SIRIUS® satellite-ready. With the color monitor and adjustable rear camera, you can view the hitch and check the tow vehicle, then pan out to view a long distance behind the tow vehicle. On top of that, the unit is GPS ready.



THE KEYLESS REMOTE ENTRY makes locking and unlocking your coach as easy as pushing a button. The unlock button turns a light on inside and outside – very handy after dark.



THE CENTRAL MONITOR PANEL lets you monitor Excursion's systems at a glance. The pressure-sensitive sensors provide an accurate reading on tank levels.



THE DRIVER'S AREA features a stylish and ergonomic wrap-around dash and a steering wheel that tilts and telescopes to suit your frame. The information center provides you with critical performance information, as well as a checklist before you hit the road.



THE FRONT CAP, molded from fiberglass, raises the handsome factor quite a few notches.



THE REAR CAP, molded from fiberglass makes for a great rear view. Its high-mounted taillights can be seen over most towed vehicles to warn off tailgaters.



EXCURSION

350HP

THE 350 HP ENGINE with 860 foot pounds of torque puts power at your foot. Suddenly, hills seem a lot less steep.

THE BEAUTY AND THE BEAST. THAT'S EXCURSION AND ITS MIGHTY DIESEL ENGINE.

Don't be fooled. Underneath that beautiful exterior lies a lot of muscle waiting to be unleashed. Excursion boasts a 350 horsepower Caterpillar® C7 diesel engine to make hill climbing and towing easier.

THE EXTERIOR ENTERTAINMENT CENTER (optional) is like a drive-in movie theater in reverse. You're outdoors watching the action on your 20" TV on the side of your coach. There's also an AM/FM radio with a DVD and CD player to provide party music for your barbecue.



ELECTRIC AWNINGS for the patio and entry door provide a covered spot to sit and chat, come rain or shine. And should the wind kick up while you're out on the links, the awnings will retract thanks to the wind sensor on the main awning.

EXTERIOR SPOTLIGHT (optional) illuminates the scene after dark. Using the wireless remote, you can move the spotlight from the inside or outside of the coach.

DUPONT® PAINT is carefully applied in two stages for maximum durability and a sleek exterior look. This process helps to ensure only the best in quality and appearance.

ILLUMINATED ENTRY HANDLE glows from within, so you can get a grip when it gets dark.

STYLISH HEATED MIRRORS look cool, but stay warm to prevent dew or frost build-up.



THE EZ STORE COMPARTMENT holds long, bulky items like golf equipment, fishing poles, even a ladder. It's lined with a special polyethylene material that's easy to clean so your golf bag stays nice.



THE EXTERIOR PULL-OUT GRILL & KITCHENETTE (optional) means outdoor cooking and a batch of new friends. If you grill it, they will come. Includes a propane grill, refrigerator, sink with hot and cold water, storage areas, and even outlets for your margarita blender.

DUAL AIR CONDITIONING UNITS are mounted on top to improve cooling and create more room for storage below.

HIGH-MOUNTED TAILLIGHTS are easy to see, even over towed vehicles.



STORAGE COMPARTMENTS feature insulated aluminum doors and gas-lift strut supports. You can open the single paddle latches with one hand, and the lighted interiors help you to see your gear at night.

4-POINT AUTOMATIC LEVELING SYSTEM levels your coach at the push of a button.

Excursion shown in Mocha.



EXCURSION

PAINT YOUR WAGON.

You see, we've painted the entire body (except the roof) with DuPont® paint, using a meticulous two-step process... it's beauty will last long into the future.

EXTERIOR GRAPHICS



WHITE DIAMOND



MOCHA



IRON



PACIFIC BLUE



RACEWAY RED

OUR INTERIOR DESIGNERS DON'T MAKE HOUSE CALLS.

The interior décor is dazzling. Customers have inquired about hiring our interior designers to decorate their home. Sorry, they're far too busy perfecting the Excursion, as you can see from these luscious fabrics and finishes.

INTERIOR WOOD FINISHES



Windsor Birch



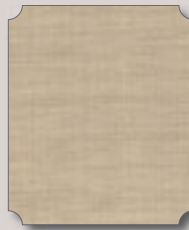
Summit Ash



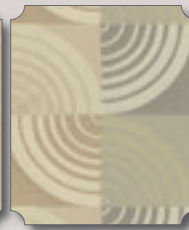
Plantation Cherry

ILLUSIONS

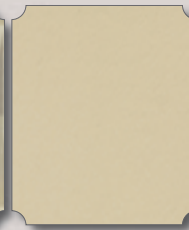
Living/Dining Room



Sofa & Recliner

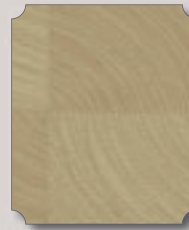


Dinette Cushions



Driver & Front Passenger Seats, Sofa (optional), Recliner (optional)

Bedroom



Bedspread



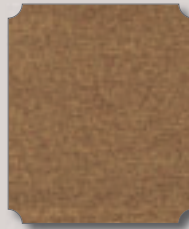
Pillow Shams



Throw Pillows

CINNABAR

Living/Dining Room



Sofa & Recliner

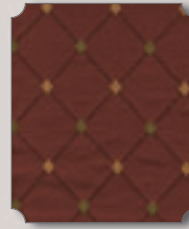


Dinette Cushions



Driver & Front Passenger Seats, Sofa (optional), Recliner (optional)

Bedroom



Bedspread



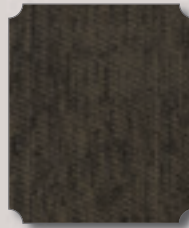
Pillow Shams



Throw Pillows

SLATE

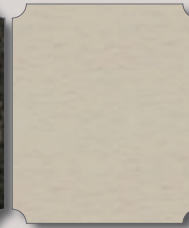
Living/Dining Room



Sofa & Recliner

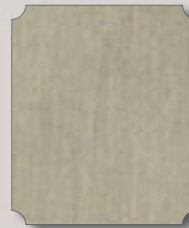


Dinette Cushions



Driver & Front Passenger Seats, Sofa (optional), Recliner (optional)

Bedroom



Bedspread



Pillow Shams



Throw Pillows



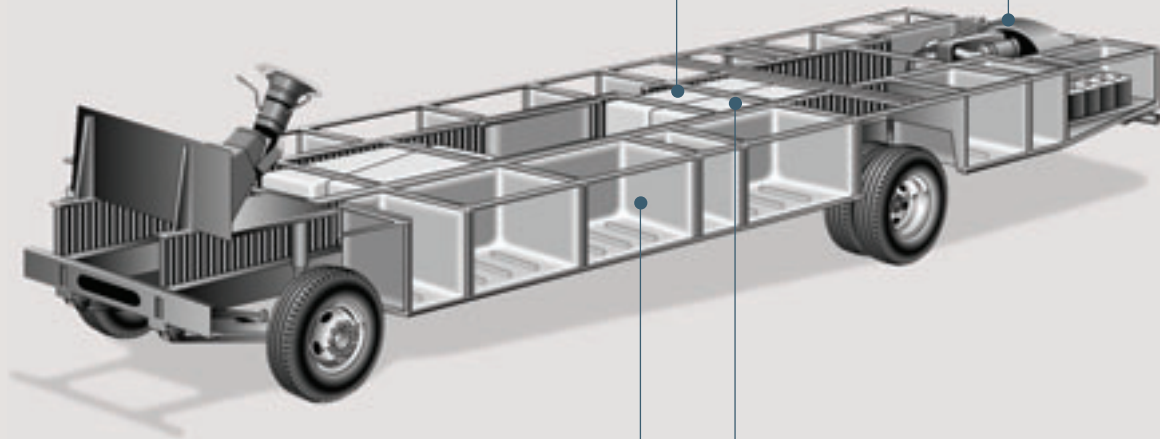
EXCURSION

THE FOUNDATION OF SUCCESS: FLEETWOOD'S POWER PLATFORM.

Fleetwood's patented Power Platform is as strong as they come. It begins with two 10-inch steel I-beams welded to the chassis. Together with the steel outriggers, they create a basement for the fluid tanks and storage, while supporting the floor, walls and roof with a rigid steel frame.

HOLDING TANKS are enclosed between the upper and lower basement floors so they can be heated in cold weather to help prevent freezing.

LARGE TOWING CAPACITY† lets you tow most vehicles with ease.



BASEMENT STORAGE features aluminum doors, constructed with heavy-duty molded polyethylene so you can hose the compartments out. They are also individually lit for after dark.

VEHICLE STABILITY is enhanced because the holding tanks are positioned in the bottom center of the platform.

† The chassis manufacturer recommends the installation of a supplemental brake control system to activate the brakes on the vehicle or trailer you are towing. Hitch receiver ratings expressed are maximum for the hitch receiver installed and may require the purchase of additional equipment that is dependent on the weight of the towed load. Consult with hitch receiver manufacturer for further information.

Drawings are for illustrative purposes only to highlight aspects of motor home construction. Actual motor home design depends on model and is subject to change.

WHY FLEETWOOD?



PASSION

We're truly passionate about the RV lifestyle. Fleetwood was founded by RV enthusiasts, and that tradition continues today.



QUALITY

There's no cutting corners. Skilled craftsmen build every Fleetwood RV for maximum durability and longevity.



SERVICE

Help is nearby. When you need an upgrade or repair, you'll find facilities all across North America and more than 1,100 dealers ready to assist you.



WARRANTY

Breathe easier with RV Ownercare, one of the best warranties in the industry. See your Fleetwood dealer for details.



TRUST

More people trust Fleetwood. After all, we've spent over 50 years perfecting RVs, earning the loyalty of generations of RVers.



INTERLOCKING FLOOR-TO-SIDEWALL CONNECTION locks tightly to keep out water, dust, and noise, and helps eliminate squeaks and rattling.



INTERLOCKING CEILING-TO-SIDEWALL EXTRUSIONS help keep the box square. This assures a proper cabinet fit.



VACU-BOND® SIDEWALL CONSTRUCTION creates a strong, weather-resistant structure. All sidewalls, floors and ceilings are Vacu-bonded to a durable metal frame.



PULL-OUT BASKETS keep your smaller items together so they don't get scattered. Store your golf balls here after a day on the links.



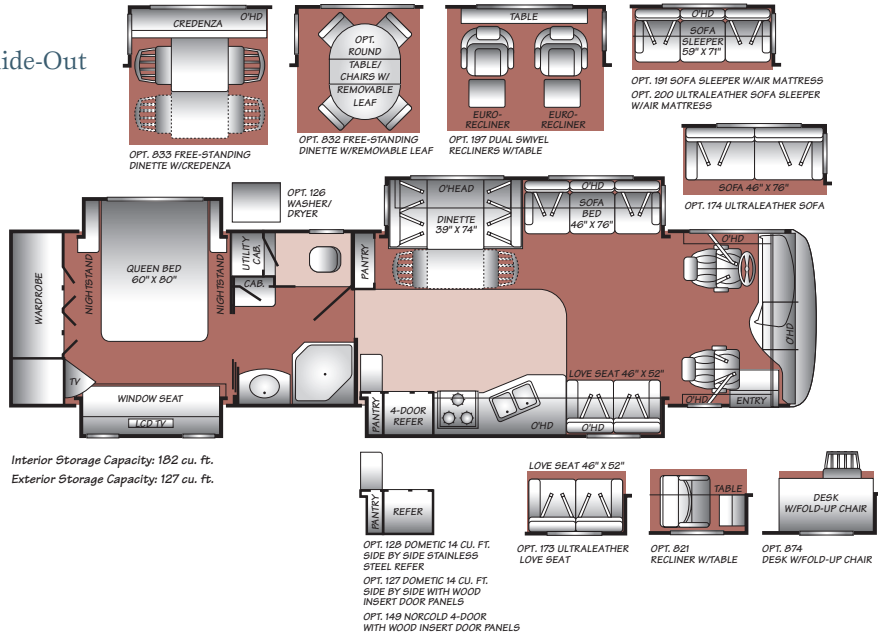
THE UTILITY COMPARTMENT lets you empty the holding tanks from one central place. The water sprayer comes in handy when it's Sparky's turn for a bath.



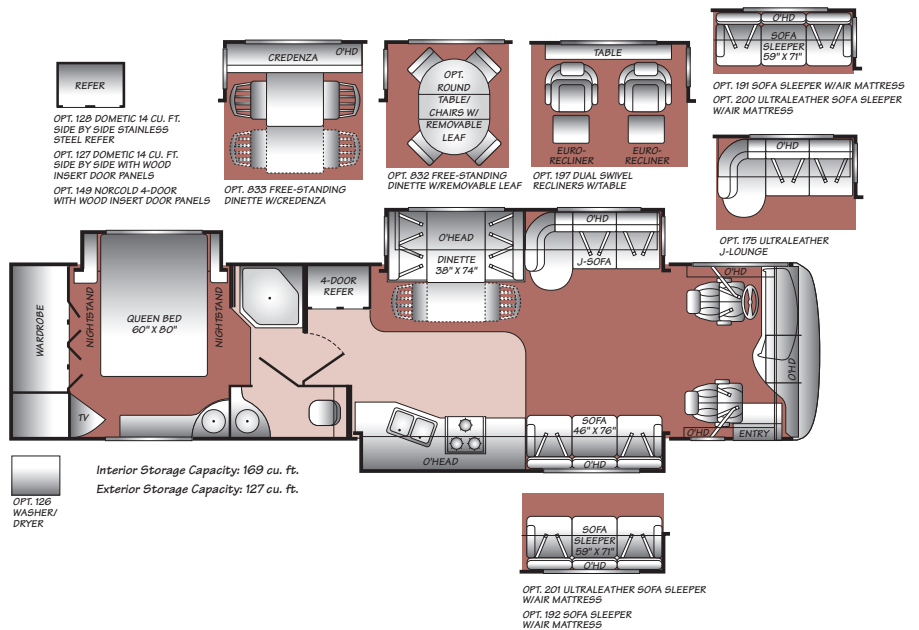
THE SPOTLIGHT (OPTIONAL) makes it more fun to stay out after dark. It swivels 180 degrees to illuminate what the moonlight can't. It even comes with a remote control.

FLOOR PLANS

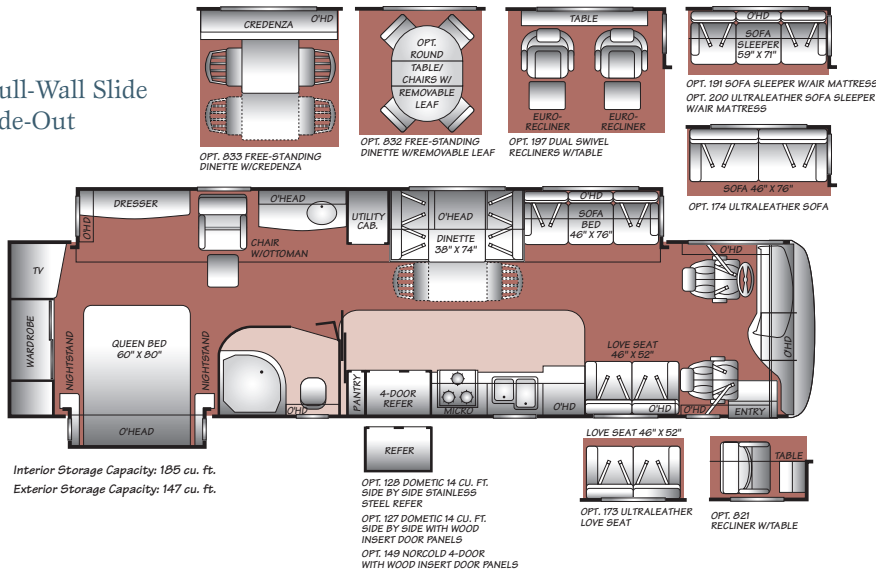
39L Quad Slide-Out



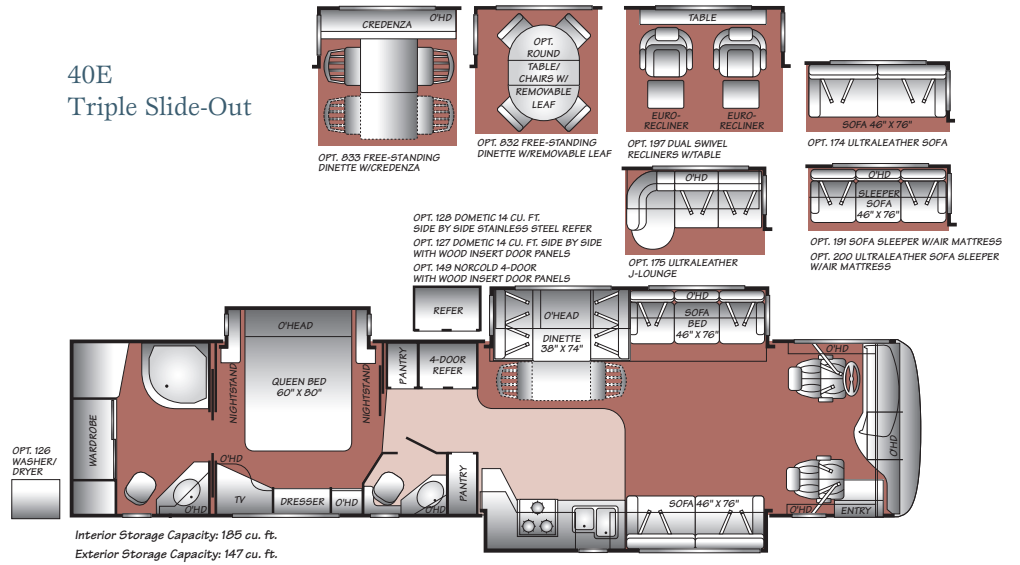
39S Triple Slide-Out



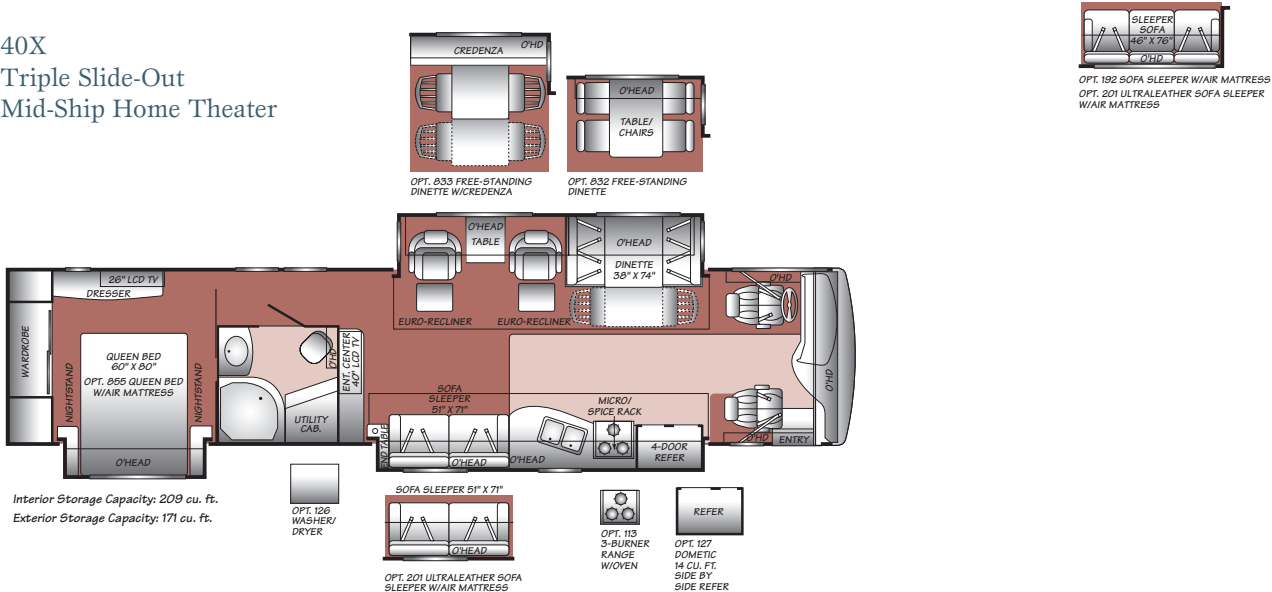
39V Features Full-Wall Slide Double Slide-Out



40E Triple Slide-Out



40X Triple Slide-Out Mid-Ship Home Theater



EXCURSION STANDARD FEATURES & OPTIONS

INTERIOR

INTERIOR – THROUGHOUT

- 10-Gallon Quick-Recovery Water Heater w/Direct Spark Ignition (Gas/Electric) S
- 20,000/25,000 BTU Dual Furnaces S
- 20,000/30,000 BTU Dual Furnaces (Model 39V) S
- **84" Interior Ceiling Height** S
- Crown Molding w/Decorative Corner Caps S
- Day/Night Pleated Shades S
- **Deluxe Roller Bearing, Full Extension Drawer Guides & Transit-Ship Locks** S
- Demand Water Pump w/Filter S
- **Dual Roof-Mounted A/C High Efficiency w/Solar Panel & Chill Grille on Front A/C** S
- Hardwood Cabinet Doors/Drawers S
- Plush Wall-to-Wall Carpet w/Carpet Pad S
- **Solid Surface Countertops and Sink Covers** S
- Vinyl Padded Ceiling S
- Wall Switches (Includes Switches for Ceiling Lights & Vents) S
- Water Heater Bypass S
- **Whole Coach Water Filtration System** S
- Wood-Finish Return Air Intake for Furnace S
- Automatic Generator Start System O
- Central Vacuum System O
- CSA Package** O
- Heat Pumps O
- Spot Light w/Remote Control O
- Washer/Dryer O
- Water Heater 16 Gallon Output O

DRIVER CONVENIENCE

- Adjustable 3-Point Seat Belts at Driver & Front Passenger Seats S
- AM/FM/CD Stereo w/Sirius® Satellite Radio (6 Month Subscription Included) S
- Color Back Up Monitor Integrated Into Radio S
- Adjustable Color Back Up Camera S
- Auxiliary Start Circuit S
- Backlit Switches & Gauges S
- Battery Shut-Off Switch S
- CB Radio Ready S
- Cruise Control S
- Driver Side Manual Pull Down Shade S
- Driver/Front Passenger Ultraleather™ Captain's Chairs w/Reclining Back/Slide Controls/Power/Heated/Adjustable Arms S
- **High-Output Auto A/C Heater Combo** S
- Passenger Armrest w/Integrated Magazine Rack S
- Passenger Seat w/Power Foot Rest & Adjustable Armrest S
- **Power Driver/Front Passenger Sun Visors** S
- Radio Switch-Main/Auxiliary Power S
- Soft-Surface Automotive Dash w/Area for Laptop GPS (Laptop & GPS Not Included) S
- Tilt/Telescoping Steering Wheel S
- Side Color Side Cameras Package O

GALLEY

- 1.4 cu. ft. Convection Microwave Oven w/Stainless-Steel Front S
- Norcold® 12 cu. ft. 4 Door Stainless Steel Refrigerator w/Ice Maker and Water Dispenser S
- 3-Burner, High-Output Cooktop w/Sealed Burners S
- Adjustable Cabinet Shelves (Select Cabinets) S
- Coffee Maker S
- Fan-Tastic® Power Roof Vent w/Wall Switch S
- Laminate Floor Tile S
- Large, Double Stainless Steel Sink S
- Raised Panel Cabinet Doors S
- Single Lever Galley Faucet w/Pullout Sprayer S
- Six Person Pull-Out Dinette Table (Select Models) S
- Slide-Out Dinette Bins w/Latches S
- Soap Dispenser S
- **Solid Surface Countertop, Sink & Range Covers** S

- Under Galley Shelving & Wastebasket S
- **Window Over Sink** S
- 14 cu. ft. Dometic® Stainless Steel Frost-Free Refrigerator S
- 12 cu ft Norcold® 4 dr w/wood inserts S
- 14 cu. ft. Dometic® Frost-Free Refrigerator w/Wood Inserts S
- 3 Burner Range w/Oven S
- Free-Standing Dinette w/Credenza S
- Free-Standing Table & Chairs S
- Laminate Wood Flooring S

LIVING ROOM

- 26" LCD Flat Screen TV (40" 40X Model) S
- DSS/Stationary Auto Locating Satellite Dish (Covered) S
- **DVD Home Theater Sound System w/Hidden Surround-Sound Speakers** S
- **Easy-Sweep Laminate Flooring at Entry** S
- Flexsteel® Residential Seat Styling S
- J-Lounge Ultraleather™ Sofa (Select Models) S
- **Space Saving Coffee Table** S
- Telephone Jack S
- TV Antenna S
- Fabric Sofa Bed S
- Leather Euro Recliner O
- Recliner w/Table (39L & 39V) O
- Ultraleather™ Sofa Bed O
- Ultraleather™ Sofa Sleeper w/Air Mattress O
- Fabric Sofa Sleeper w/Air Mattress O
- Leather Euro Swivel Recliner Free-Standing (Select Models) O
- Desk (39L) O

BEDROOM

- 20" LCD TV Mounted on Wall (Select Models) S
- Bedspread w/Decor Pillows S
- Cabinet Storage Above the Bed S
- Coffered Ceiling S
- Mirrored Wardrobe Doors S
- Remote Generator Start S
- **Restonic® Deluxe Pillow Top Innerspring Mattress** S
- Second Phone Jack S
- **Ventilated Rear Wardrobe w/Cedar Lining, Carpeted Floor & Wire Organizer** S
- Wardrobe Lighting S
- Bedroom Entertainment Center w/26" LCD TV and Home Theatre (Model 39L & 40X) S
- Sleep By Number Mattress S

BATHROOM

- Cabinet Toe Kicks S
- Coordinated Bath Accessories S
- Fan-Tastic® Power Roof Vent w/Wall Switch S
- Hardwood Bath Door/Trims S
- Laminate Floor Tile S
- Lighted Assist Handle S
- Molded Shower Enclosure w/Skylight S
- Porcelain Toilet w/Water Saver O
- Stainless-Steel Sink S
- Laminate Wood Flooring S

SAFETY/CONVENIENCE

- Carbon Monoxide Detector/Alarm S
- Fire Extinguisher S
- Propane Detector/Alarm S
- Smoke Detector/Alarm S

EXTERIOR

EXTERIOR – THROUGHOUT

- 120V/12V AC/DC Converter S
- 120V/12V Wire Raceways S
- 2000 Watt Inverter w/Remote S
- **4-Point Automatic Electric Levelers** S
- 50-Amp Service S
- 7.5 kW Onan® Quiet Diesel Generator S
- Awning Rail/ Drip Molding (Both Sides) S
- **Choice of Five Colorway Graphics** S

- Dual Battery Charge Control S
- Dual Pane Windows w/Screens S
- Fiberglass Front Quarter Panels S
- Fiberglass Front/Rear Caps w/High-Mounted Taillights S
- Fiberglass Wheel Well Trims S
- **Full-Body Paint** S
- Remote/Heated Exterior Rear View Mirrors S
- Utility Compartment w/Exterior Shower S
- Water Pump Switch (Multiple Locations) S
- **Weather Pro Power Awnings (Patio Awning Includes Wind Sensor)** S
- Entertainment Center w/20" TV and Stereo (Select Models) O
- Clear Front Protective Mask O
- Pull-Out Grill and Kitchenette (Select Models) O
- Window Awning Package O

AUTOMOTIVE

- 10,000-lb. Weight-Distributing Hitch Receiver S
- w/7-Pin Electrical Hook-up S
- **350-HP Cat® C7 Engine w/Rear Mounted Radiator** S
- Aluminum Wheels S
- **Dual Fuel Fill (One on Each Side)** S
- Fog Lamps O
- **Freightliner® Chassis** S
- Large Bonded-in Windshield S
- Mud Flaps O
- Rear Vision Camera S
- Single Motor Denso Windshield Wipers w/Wet Arm S
- Tire Valve Extenders S
- Underhood Utility Light S

SAFETY/CONVENIENCE

- 20' Sewer Hose S
- Central Electrical Panel S
- Doorside Patio Receptacle S
- Entry Door w/Screen Door & Deadbolt Lock S
- Four 6V/Deep-Cycle House Batteries S
- Keyless Entry Remote S
- **Lighted Exterior Entry Assist Handle** S
- Park Cable Receptacle S
- Porch Light (Doorside) S
- Power Entry Step S
- Roof Ladder S
- Toilet Tank San-T-Flush™ System S
- Touch Sensor Tank Monitoring System S

STORAGE

- Continuous One-Piece Compartment Bulb Seal S
- **EZ-Store Compartment on Living Area Slide-Outs** S
- Gas-Lift Strut Supports (Two-Stage Under Slide Box) S
- Hidden, Stainless Steel Latch Rods S
- Insulated Aluminum Luggage Doors w/Single Paddle Metal Latches & Stainless Steel Hinges S
- Lighted Luggage Compartments S
- Rotomolded Polyethylene Luggage Compartments S
- Spare Tire Compartment (N/A 39V, 40E, 40X) S
- (Spare Tire Not Included) S

BODY STRUCTURE

- **Aluminum Interlocking Floor/Wall/Ceiling Framing** S
- Color Coordinated Royal Tuff-Ply Roof S
- Heated Water & Holding Tank Compartments S
- Royal Tuff-Ply Radius Roof w/Ducted A/C S

FLEETWOOD ADVANTAGES

- **Complete TuffPEX® Plumbing System** S
- **Energy Management System (EMS) w/Soft-Start** S
- **Full-Wall Slide (Patent Pending) (Fleetwood Exclusive)** S
- **Power Platform Construction (Fleetwood Exclusive)** S
- **Vacu-Bond® Upper/Lower Floors** S
- **Vacu-Bond® Walls w/Smooth High-Gloss Exterior Tuff-Coat Fiberglass** S

EXCURSION WEIGHTS & MEASUREMENTS

FREIGHTLINER® CHASSIS

MODELS	39L	39S	39V	40E	40X
Engine Displacement (Liters)	7.2	7.2	7.2	7.2	7.2
Wheelbase (Inches)	252"	252"	252"	276"	276"
GVWR (lbs) ¹	31,000	31,000	31,000	31,000	31,000
Front GAWR (lbs) ²	12,000	12,000	12,000	12,000	12,000
Rear GAWR (lbs) ²	19,000	19,000	19,000	19,000	19,000
Base Weight (lbs) ³	24,000	23,700	24,000	24,000	24,000
GCWR (lbs) ⁴	41,000	41,000	41,000	41,000	41,000
Hitch Rating Weight (lbs) [†]	10,000	10,000	10,000	10,000	10,000
Tongue Weight (lbs) [†]	1,000	1,000	1,000	1,000	1,000
Fuel Capacity (gal)	90	90	90	90	90

DIMENSIONS & CAPACITIES

MODELS	39L	39S	39V	40E	40X
Overall Length ⁵	39' 2"	39' 2"	39' 2"	41' 2"	41' 2"
Overall Height (with A/C)	12' 10"	12' 10"	12' 10"	12' 10"	12' 10"
Overall Width (maximum) ^{6,7}	102"	102"	102"	102"	102"
Interior Height (maximum)	84"	84"	84"	84"	84"
Interior Width (maximum)	96"	96"	96"	96"	96"
Fresh Water Holding Tank (gal)	86	86	86	86	86
Grey Water Holding Tank (gal)	50	50	50	50	50
Black Water Holding Tank (gal)	50	50	50	50	50
Appliance Propane Tank (gal) (WC) ⁸	38	38	38	38	38
Water Heater Tank (gal)	10	10	10	10	10

Liquid Weight Reference: Water (gal) = (8.3 lbs/3.8 kgs) Fuel (gal) = (7.1 lbs/3.2 kgs) Propane (gal) = (4.2 lbs/1.9 kgs)

Metric Conversion: Multiply pounds x 0.453 to obtain kilograms. Multiply gallons x 3.785 to obtain liters. Multiply liters x 61 to obtain cubic inches.

CHASSIS

Model: Freightliner®

Engine: Cat® C7 350 HP

Torque: 860 lb-ft @ 1440 RPM

Alternator Amps: 170 Amp Leece Neville®

Transmission: Allison® 3000 MH 6-Speed w/Electronic Shifter

- GVWR (Gross Vehicle Weight Rating) is the maximum permissible weight of this fully loaded motor home. The GVWR is equal to or greater than the sum of the (UVW) unloaded vehicle weight plus the (CCC) cargo carrying capacity*.
- GAWR (Gross Axle Weight Rating) is the maximum permissible loaded weight a specific axle is designed to carry.
- Base Weight is the estimated weight of the motor home without fuel, options, water, cargo or passengers.
- GCWR (Gross Combined Weight Rating) is the value specified by the motor home manufacturer as the maximum allowable loaded weight of this motor home with its towed vehicle. Towing and braking capacities may be different. Refer to Fleetwood and chassis manufacturer's manuals for complete information.
- Length taken from front bumper to rear bumper (excludes accessories).
- Excludes safety equipment and awnings.
- Motor homes feature a body-width over 96" which will restrict your access to certain roads. Before purchasing, you should research any state and/or province road laws which may affect your usage.
- Tank manufacturer's listed water capacity (WC). Actual propane capacity is 80% of water listing as required by the safety code.

† The chassis manufacturer recommends the installation of a supplemental brake control system to activate the brakes on the vehicle or trailer you are towing. Hitch receiver ratings expressed are maximum for the hitch receiver installed and may require the purchase of additional equipment that is dependent on the weight of the towed load. Consult with hitch receiver manufacturer for further information.

N/A = Not available at time of printing.

*UVW and CCC are found on the cargo carrying capacity label in each RV.

IMPORTANT – PLEASE READ: Product information, photography and illustrations included in this publication were as accurate as possible at the time of printing. For further product information and changes, please visit our website at www.fleetwoodrv.com or contact your local Fleetwood dealer. Prices, materials, design and specifications are subject to change without notice. All weights, fuel, liquid capacities and dimensions are approximate. Fleetwood has designed its recreational vehicles to provide a variety of uses for its customers. Each vehicle features optimal seating, sleeping, storage and fluid capacities. The user is responsible for selecting the proper combination of loads (i.e. occupants, equipment, fluids, cargo, etc.) to ensure that the vehicle's capacities are not exceeded.

EXCURSION™

RV OWNERCARE*

Limited one-year/15,000-mile coach warranty and three-year/50,000-mile structural warranty, whichever occurs first, and it is fully transferable for the first 12 months. RV OWNERCARE is one of the RV industry's most comprehensive programs and includes systems, appliances, components and construction, with no deductible and no service charge. RV OWNERCARE coverage is provided from a company that will be around in the future to service your needs. See your nearest Fleetwood dealer for a full explanation of benefits and restrictions.

CONTACT US

To locate a dealer near you, visit our website at www.fleetwoodrv.com or call 1-800-444-4905. We can also be contacted at Fleetwood Customer Relations, P.O. Box 1007, Decatur, IN 46733.

FLEETWOOD TRAVELCADE CLUB

As a Fleetwood owner, you're eligible to become a member of the Fleetwood Travelcade Club. It's a perfect way to meet other Fleetwood owners who love to travel across America and share in the RV lifestyle. Call (877) 577-2560, or visit our website at www.fleetwoodrv.com/owners_clubs to learn more, and join the fun.

YOUR LOCAL FLEETWOOD DEALER IS:

*For complete info see your Fleetwood dealer.

©2006. Fleetwood Enterprises, Inc.
Printed in the USA. Inventory Control Number EXC07B2, 11/06.
Model Year 2007, Second Edition.

IMPORTANT—PLEASE READ

Product information, photography and illustrations included in this publication were as accurate as possible at the time of printing. For further product information and changes, please visit our website at www.fleetwoodrv.com or contact your local Fleetwood dealer. Prices, materials, design and specifications are subject to change without notice. All weights, fuel, liquid capacities and dimensions are approximate. Fleetwood has designed its recreational vehicles to provide a variety of uses for customers. Each vehicle features optimal seating, sleeping, storage and fluid capacities. The user is responsible for selecting the proper combination of loads (i.e. occupants, equipment, fluids, cargo, etc.) to ensure that the vehicle's capacities are not exceeded.



tread lightly!
LEAVING A GOOD IMPRESSION



FLEETWOOD
Driven to Explore