

WILDERNESS and WILDERNESS ADVANTAGE-Travel Trailers and Fifth Wheels-2006



Wilderness

On Your Own.



WILDERNESS and WILDERNESS ADVANTAGE-Travel Trailers and Fifth Wheels-2006

Wilderness



Wilderness 270FQS shown in Lodge interior decor with Summer Oak wood finish.



AN INTEGRATED MAGAZINE RACK (top left) is the perfect place to keep your favorite publications on your travels.

THE DROP DOWN SOFA KICK PANEL (middle left) conveniently provides additional storage space under the sofa.

While competitors often build their own furniture, Fleetwood focuses on building and designing a superior RV with trusted name brands like comfortable Flexsteel® furniture with a lifetime warranty on the frame. Other notable name brands include Dometic®, Magic Chef® and Hydroflame.

UNDER-THE-DINETTE STORAGE (lower left) is accessible under the seat cushion or through the side door for your storage needs.

OVERHEAD STORAGE (top right) is a great place to keep books, board games, CDs or anything else for your travels.

AN ENTERTAINMENT CENTER (middle right) features a large TV shelf with overhead/underneath storage (TV & VCR not included).

THE AM/FM RADIO W/CD PLAYER (lower right) allows you to play your favorite music, listen to the game or talk radio programs.



Only The Best.

Wilderness' superior construction and fresh design makes it stand tall over the competition. Strong, smooth and laminated hard wall construction looks fantastic, while providing improved insulation and increased rigidity over the competition's design. The side-walls are also very easy to

clean, so you can always keep your Wilderness looking great. You want style? You got it. Wilderness offers the absolute best looking interior decor motifs at its price point, along with awesome looking exterior graphics with features like radius entry and luggage doors, giving it a very contemporary look.



A SINGLE LEVER FAUCET WITH SPRAYER looks fantastic and is great for quick cleanup, just like home. You'll also love the built in soap dispenser for convenient hand washing.

SINK LID COVERS provide additional countertop space and can be used as a cutting board.

A BUILT-IN SPICE RACK is a great feature, making the galley even more accommodating for your cooking needs.

UNDER-THE-SINK STORAGE is a convenient place to keep cleaning supplies, just like home.

THE GALLEY boasts great features like a 3 burner stove with a 22" range, plenty of storage space for dishes, plates and cookware, and a contemporary design.

THE MICROWAVE is perfect for a quick snack or meal on the go.

A POTS & PANS DRAWER is specifically designed for large cookware, while featuring full extension hardware, giving you full access to the drawer.

THE PANTRY features convenient adjustable shelves so you can store a variety of non-perishable goods.



Great Space.

Wilderness' bedroom provides a great space to relax with the comfortable innerspring mattress, making it easy to catch some Z's. Take advantage of numerous floor plan configurations, giving you the option of single or double bunk beds. Wilderness can sleep up

to 10 thanks to its accommodating layout, designed to make your traveling experiences seamless and easy. In the bathroom, enjoy a power vent for air circulation, residential towel racks and a medicine cabinet with mirrored door just like home.



OVERHEAD STORAGE
gives you even more room to store bedding, clothing or anything else you might need on your journey.

UNDER-THE-BED STORAGE
is an ideal place to keep extra linens, towels or even clothing (offered on most models).

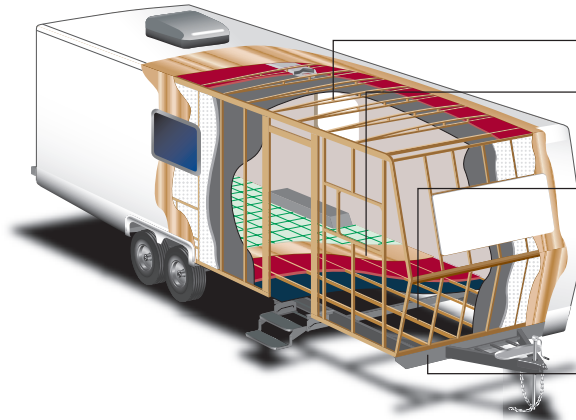
SHOWER WITH WATERSAVER
has integrated ABS shower walls, easily useable as a tub. Watersaver is a nice feature on the showerhead that allows you to conserve water while dry camping.

THE BEDROOM
boasts a stylish interior decor, raised panel overhead cabinets, his/her wardrobes for additional storage and mini-blinds to keep out, or let in the light (Pillow shams not included).

THE BATHROOM WARDROBE
includes a slotted clothes rack that can accommodate full-size hangers for your clothing needs.

Setting the Standard in Travel Trailer and 5th Wheel Quality.

Fleetwood® prototypes are exposed to thousands of miles of durability testing. Those components that don't survive are redesigned until they do. This sets the standard in safety and durability.



ENGINEERED RADIUSED CEILING TRUSS
ensures strength, water runoff and reduced weight.

5/8" FLOOR DECKING
provides the dependable decking needed to ensure an adequate foundation. Further stability is added by interlocking these sheets using "tongue in groove" construction.

2X3 FLOOR JOIST
allows for the placement of in-floor furnace ducting without compromising structural integrity.

SMOOTH GLOSS FIBERGLASS EXTERIOR SIDING
adds more structural integrity than aluminum siding, which provides a glossy surface that is easy-to-clean and adds long lasting beauty.

REINFORCED CAMBERED STEEL CHASSIS
provides optimal strength, durability and performance.



THE EXTERIOR SHOWER
(optional) is a very convenient feature for a quick rinse off after a day of playing.

CUBE SPEAKERS AND SUB-WOOFER
will make your favorite music sound even better.

GARAGE STORAGE
(optional) is great for storing all kinds of gear, and is lined with a special easy to clean material.

TINTED SAFETY GLASS WINDOWS
help keep the sun out and also aid in reducing the likelihood that fabrics will fade.

LARGE LEND-A-HAND ENTRY ASSIST HANDLE
(optional) makes it easy to enter or exit.

PASS THROUGH STORAGE
is perfect for storing oversized items like snowboards, surfboards or fishing poles (available on most models).

A WATER FILTER
(optional) is a very functional feature, providing you with fresh filtered water for drinking.

A LOW PRESSURE PROPANE CONNECTOR
allows you to hook up a BBQ for great cooking while camping.



A Clear Advantage.

The Wilderness Advantage distances itself even further from the competition with its stunning looks and great features. Advantage boasts aluminum framing, creating a lightweight but strong vehicle skeleton, ideal for towing. A standard enclosed, heated water tank, will minimize the chance of freezing even in colder temperatures, while optional

enclosed heated grey and black water tanks are also available to make your camping experience that much more convenient. If that wasn't enough, the breathtaking design looks awesome with a stunning fiberglass front cap combined with a brand new deluxe graphics package (not available on Wilderness). Advantage is nothing short of spectacular.



THE BATHROOM

features an elegant single handle faucet that's easy to operate and standard 3 bulb vanity light, providing additional lighting.



THE FIBERGLASS FRONT CAP

is aerodynamic, sleek and appealing to the eye, for an upscale look and feel.



ALUMINUM FRAME CONSTRUCTION

Wilderness Advantage's welded aluminum frame construction coupled with Fleetwood's lamination process provides superior sidewalls which are not just strong and corrosion resistant, but also lightweight.



DECORATIVE LIGHTING

in the living room adds to the upscale atmosphere, making your travels that much more enjoyable.

SWIVEL READING LIGHTS

in the bedroom make it easy and convenient to curl up to a good book.

FOUR INTERIORS. THE CHOICE IS YOURS.

For '06, choose from diverse interior fabric motifs. With each interior, you can choose from two beautiful wood finishes.

WILDERNESS EXTERIORS



WILDERNESS

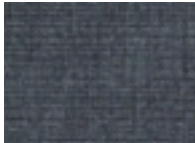


WILDERNESS ADVANTAGE

WILDERNESS INTERIOR COLOR CHOICES

COOL SPRINGS

Living/Dining Room



Sofa Bed & Swivel Chair

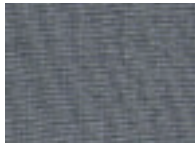


Dinette Cushions & Throw Pillows

Bedroom



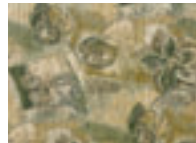
Headboard



Bedspread & Window Treatments

ASPEN BREEZE

Living/Dining Room



Sofa Bed & Dinette Cushions



Swivel Chair & Throw Pillows

Bedroom



Headboard



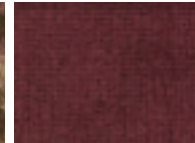
Bedspread & Window Treatments

TRUMPET VINE

Living/Dining Room



Sofa Bed & Dinette Cushions



Swivel Chair & Throw Pillows

Bedroom



Headboard & Bedspread



Window Treatments

LODGE

Living/Dining Room



Sofa Bed & Dinette Cushions



Swivel Chair & Throw Pillows

Bedroom



Headboard



Bedspread & Window Treatments

INTERIOR WOOD FINISHES



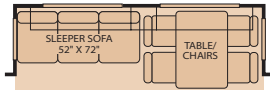
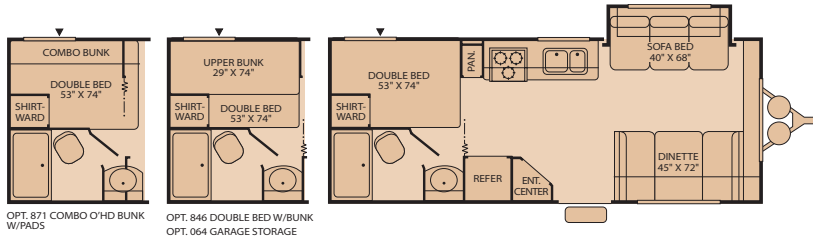
Summer Oak



Windsor Birch

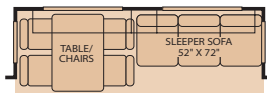
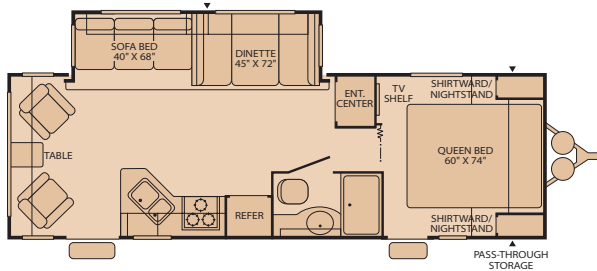
Travel Trailer Floor Plans

220RBS ♦
Single Slide-Out
Sleeps 6



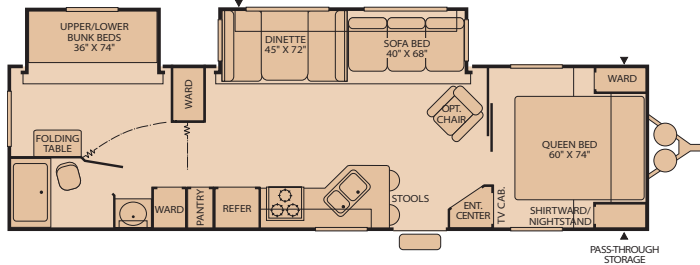
OPT. 832
FREE-STANDING DINETTE AND CHAIRS
OPT. 810
SLEEPER SOFA W/FREE-STANDING DINETTE AND CHAIRS

260RLS ♦
Single Slide-Out
Sleeps 6

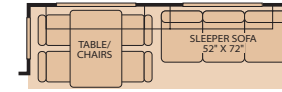
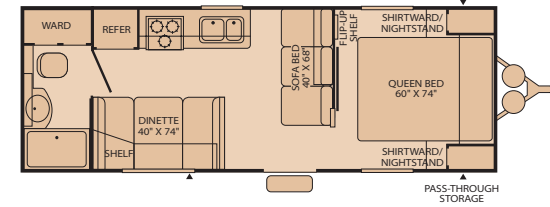


OPT. 832
FREE-STANDING DINETTE AND CHAIRS
OPT. 810
SLEEPER SOFA W/FREE-STANDING DINETTE AND CHAIRS

3102BDS ♦
Double Slide-Out
Sleeps 8

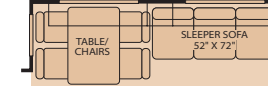
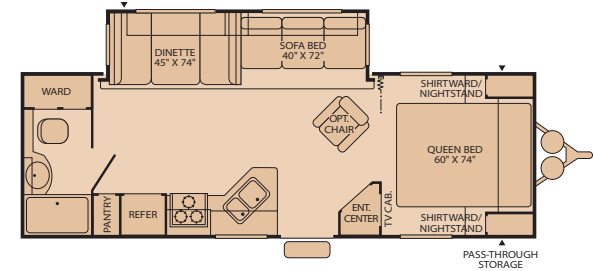


250FQ ♦
Sleeps 6



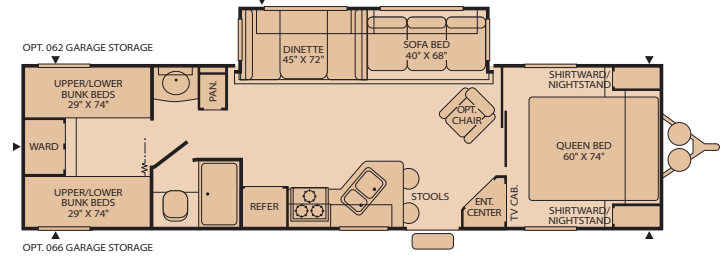
OPT. 832
FREE-STANDING DINETTE AND CHAIRS
OPT. 810
SLEEPER SOFA W/FREE-STANDING DINETTE AND CHAIRS

270FQS ♦ ●
Single Slide-Out
Sleeps 6



OPT. 832
FREE-STANDING DINETTE AND CHAIRS
OPT. 810
SLEEPER SOFA W/FREE-STANDING DINETTE AND CHAIRS

320DBHS ♦ ●
Single Slide-Out
Sleeps 10

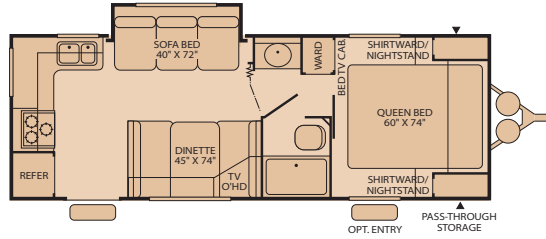


Wilderness = ♦ Wilderness Advantage = ●

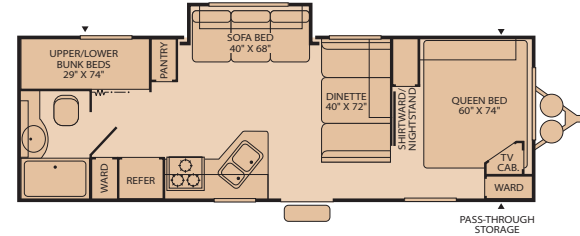
Exterior Storage = ▲

Some models are not available in all areas of the country.
Please see your local dealer for model availability.

250RKS ◆
Single Slide-Out
Sleeps 6



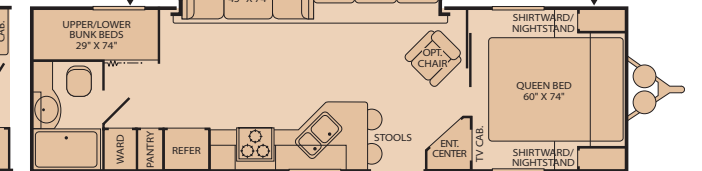
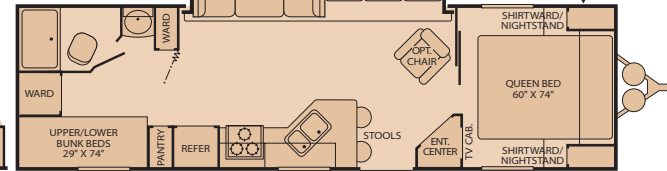
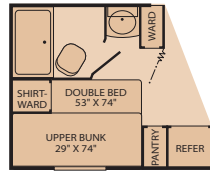
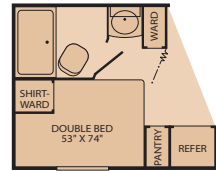
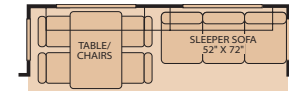
260BHS ◆
Single Slide-Out
Sleeps 8



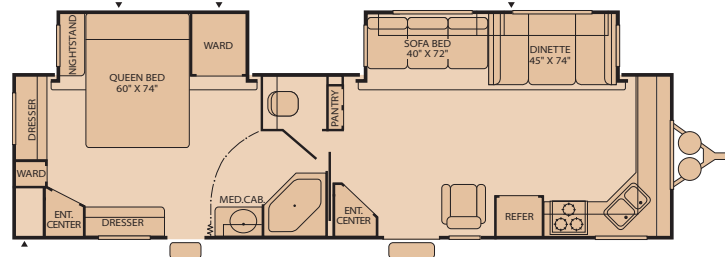
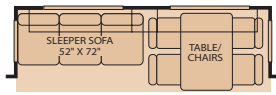
300BHS ◆
Single Slide-Out
Sleeps 8



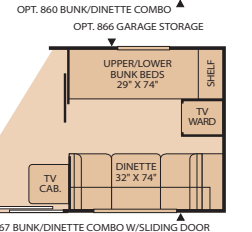
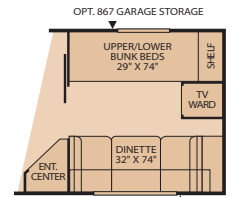
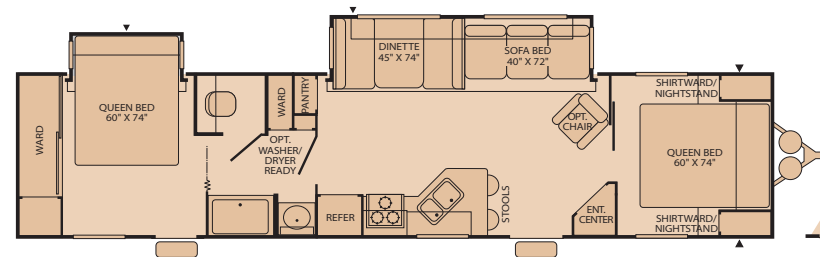
300FQS ◆ ●
Single Slide-Out
Sleeps 8



330FKDS ◆ ●
Double Slide-Out
Sleeps 6



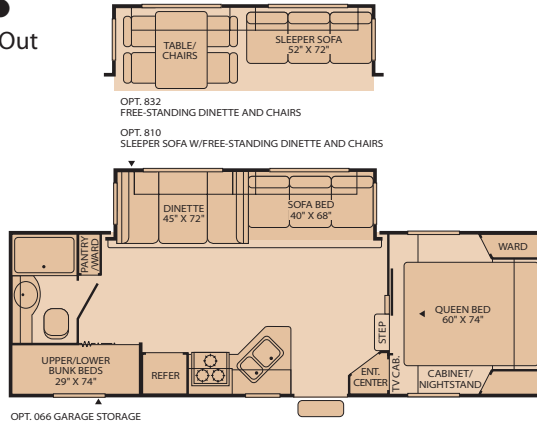
3902BDS ◆
Double Slide-Out
Sleeps 8



Sleeping capacity based on standard layout. Optional furniture may increase or decrease sleeping capacity.

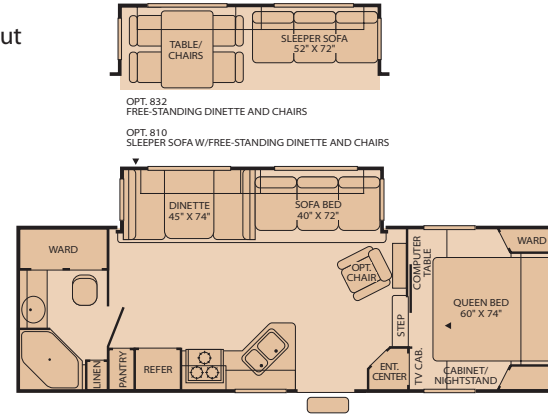
Fifth Wheel Floor Plans

255BHS ♦ ●
Single Slide-Out
Sleeps 8



Mid Profile Fifth Wheel

275CKS ♦
Single Slide-Out
Sleeps 6



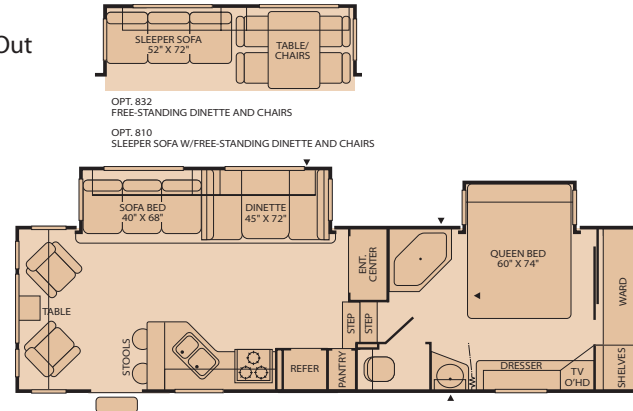
Mid Profile Fifth Wheel

295RLS ♦ ●
Single Slide-Out
Sleeps 6



Mid Profile Fifth Wheel

305RLDS ●
Double Slide-Out
Sleeps 6



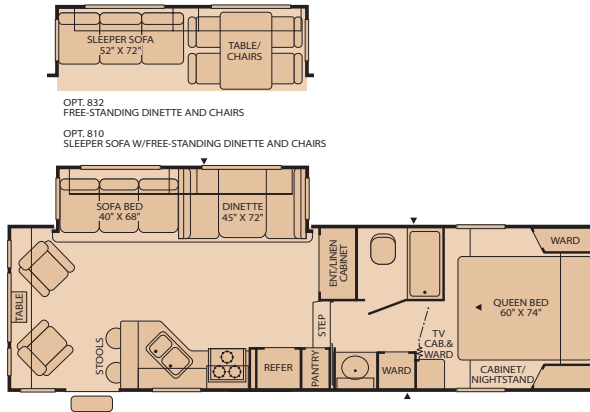
High Profile Fifth Wheel

Wilderness = ♦ Wilderness Advantage = ●

Exterior Storage = ▲

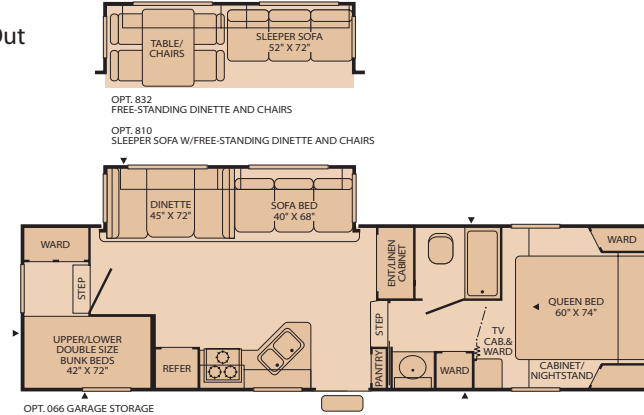
*Some models are not available in all areas of the country.
Please see your local dealer for model availability.*

285RLS ◆ ●
Single Slide-Out
Sleeps 6



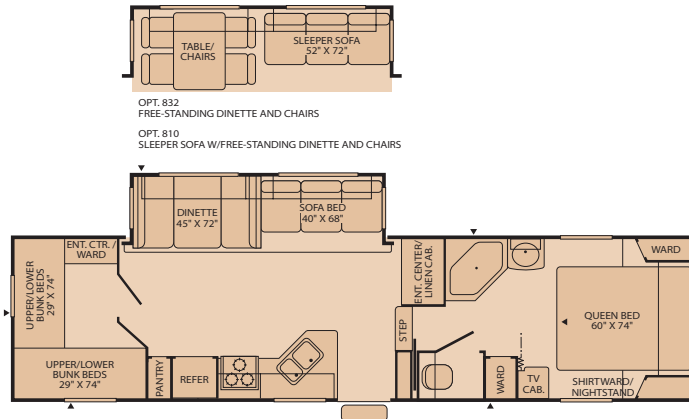
Mid Profile Fifth Wheel

2952BS ◆ ●
Single Slide-Out
Sleeps 10



Mid Profile Fifth Wheel

315BHS ◆ ●
Single Slide-Out
Sleeps 10



Mid Profile Fifth Wheel

To Our Customers...

To make sure that you get the maximum satisfaction out of your recreational vehicle purchase, there are several things you should know:

1. Learn all you can about the travel trailer or fifth wheel you're planning to buy. Don't rely on word of mouth. Get the facts about the actual trailer length, width, unloaded weight with options, Gross Vehicle Weight Rating, and cargo carrying capacity. These are usually available in the manufacturer's sales literature or from the Cargo Carrying Capacity Label located in each trailer. Be sure to check this information **before** you decide which unit to buy.
2. Verify the towing capacity of your tow vehicle. If you don't know, or aren't sure, you can ask at your automotive dealership. Be sure to match its tow rating to the loaded (not dry) weight of your trailer. Include the weight of water, additional accessories, clothing, food, and gear. To help Fleetwood travel trailer customers estimate this total weight, our Gross Vehicle Weight Ratings reflect the maximum weight of the trailer when fully loaded for camping. Be sure the weight of the tow vehicle plus the weight of your trailer do not exceed the Gross Combined Weight Rating of the tow vehicle.

Taking these simple steps before you buy will help ensure that your trailer and tow vehicle combination is just what you wanted.

Happy Camping!

Sleeping capacity based on standard layout. Optional furniture may increase or decrease sleeping capacity.

Weights and Measurements *for Wilderness*

TRAVEL TRAILERS

WEIGHTS	220RBS	250FQ	250RKS	260BHS	260RLS	270FQS	300BHS	300FQS	3102BDS	320DBHS	330FKDS	3902BDS
GVWR (lbs) ¹	6,500	7,500	7,500	7,700	8,400	8,000	9,500	9,600	9,950	9,600	10,700	11,300
Gross Dry Weight (lbs) ^{2,6}	4,890	4,812	5,320	5,538	6,133*	5,933	6,708	6,797	7,558	6,827	8,213*	8,679*
Cargo Carrying Capacity (lbs) ^{3,6}	1,610	2,688	2,180	2,162	2,267*	2,067	2,792	2,803	2,392	2,773	2,487*	2,621*
Hitch Dry Weight (lbs) ^{2,6,9}	758	658	569	717	N/A	828	828	969	997	875	N/A	N/A

DIMENSIONS AND CAPACITIES

Length (Feet and Inches) ^{4,6,8}	24' 2"	25' 11"	26' 2"	27' 11"	29' 0"	27' 10"	32' 0"	31' 10"	33' 11"	33' 11"	33' 11"	39' 7"
Height (Feet and Inches) ^{5,6}	9' 8"	9' 11"	9' 8"	9' 11"	10' 2"	10' 2"	10' 2"	10' 2"	10' 4"	10' 2"	10' 2"	10' 2"
Fresh Water Holding Tank (gal) ^{6,7}	50	50	50	50	50	50	50	50	50	50	50	50
Grey Water Holding Tank (gal) ^{6,7}	40	40	40/40	40	40	40	40	40	40	40	40/40	40
Black Water Holding Tank (gal) ^{6,7}	40	40	40	40	40	40	40	40	40	40	40	40
Propane Capacity (lbs) ^{6,7}	60	60	60	60	60	60	60	60	60	60	60	60
Tire Size (Load Range)	ST205/ 75R 14(C)	ST205/ 75R 14(C)	ST205/ 75R 14(C)	ST205/ 75R 14(C)	ST225/ 75R 15(C)	ST205/ 75R 15(C)	ST225/ 75R 15(C)	ST225/ 75R 15(C)	ST225/ 75R 15(D)	ST225/ 75R 15(D)	ST225/ 75R 15(D)	ST225/ 75R 15(D)

FIFTH WHEELS

WEIGHTS	255BHS	275CKS	285RLS	2952BS	295RLS	315BHS
GVWR (lbs) ¹	9,700	9,500	9,950	11,300	11,300	11,300
Gross Dry Weight (lbs) ^{2,6}	6,826	6,874	7,777	8,119	8,022*	8,608*
Cargo Carrying Capacity (lbs) ^{3,6}	2,874	2,626	2,173	3,181	3,278*	3,092*
Hitch Dry Weight (lbs) ^{2,6,9}	1,264	1,196	1,545	1,374	N/A	N/A

DIMENSIONS AND CAPACITIES

Length (Feet and Inches) ^{4,6,8}	27' 11"	28' 3"	30' 4"	32' 5"	31' 11"	35' 0"
Height (Feet and Inches) ^{5,6}	11' 8"	11' 8"	11' 9"	11' 10"	11' 9"	11' 10"
Fresh Water Holding Tank (gal) ^{6,7}	50	40	40	50	50	50
Grey Water Holding Tank (gal) ^{6,7}	40	40	40/40	40/40	40/21	40/40
Black Water Holding Tank (gal) ^{6,7}	40	40	40	40	40	40
Propane Capacity (lbs) ^{6,7}	60	60	60	60	60	60
Tire Size (Load Range)	ST225/ 75R 15(C)	ST225/ 75R 15(C)	ST225/ 75R 15(D)	ST225/ 75R 15(D)	ST225/ 75R 15(D)	ST235/ 80R 16(D)

Weights and Measurements for Wilderness Advantage

WEIGHTS	TRAVEL TRAILERS				FIFTH WHEELS					
	270FQS	300FQS	320DBHS	330FKDS	255BHS	285RLS	2952BS	295RLS	305RLDS	315BHS
GVWR (lbs)¹	8,000	9,500	9,600	10,700	9,900	9,950	11,300	11,300	11,600	11,700
Gross Dry Weight (lbs)^{2,6}	6,128	6,917	7,076	8,337*	7,033	7,865	8,166	8,166*	9,037*	8,527
Cargo Carrying Capacity (lbs)^{3,6}	1,872	2,583	2,524	2,363*	2,867	2,085	3,134	3,134*	2,563*	3,173
Hitch Dry Weight (lbs)^{2,6,9}	850	882	1,010	N/A	1,333	1,569	1,398	N/A	N/A	1,598

DIMENSIONS AND CAPACITIES										
Length (Feet and Inches)^{4,6,8}	27' 10"	31' 10"	33' 11"	33' 11"	27' 11"	30' 4"	32' 5"	31' 11"	31' 11"	35' 0"
Height (Feet and Inches)^{5,6}	10' 2"	10' 2"	10' 2"	10' 2"	11' 8"	11' 8"	11' 9"	11' 9"	11' 9"	11' 10"
Fresh Water Holding Tank (gal)^{6,7}	50	50	50	50	40	40	50	50	50	50
Grey Water Holding Tank (gal)^{6,7}	40	40	40	40/40	40	40/40	40/40	40/21	40/21	40/40
Black Water Holding Tank (gal)^{6,7}	40	40	40	40	40	40	40	40	40	40
Propane Capacity (lbs)^{6,7}	60	60	60	60	60	60	60	60	60	60
Tire Size (Load Range)	ST205/ 75R 15(C)	ST225/ 75R 15(C)	ST225/ 75R 15(D)	ST225/ 75R 15(D)	ST225/ 75R 15(C)	ST225/ 75R 15(D)	ST225/ 75R 15(D)	ST225/ 75R 15(D)	ST225/ 75R 15(D)	ST235/ 80R 16(D)

- GVWR (Gross Vehicle Weight Rating) is the maximum permissible weight of this trailer when fully loaded. It includes all weight at the trailer axle(s) and tongue or pin.
- All dry weights are based on the standard model and do not include optional features or equipment.
- Cargo Carrying Capacity is determined by subtracting Gross Dry Weight from GVWR. Cargo Carrying Capacity includes all fluids, optional features, equipment, and personal cargo.
- Length taken from hitch or pin box to rear bumper (excludes accessories). Trailer length includes 3' 6" for hitch; fifth wheel includes standard pin box.
- Add 9" if equipped with optional roof air conditioner.
- Approximate.
- Water weight equals 8.3 lbs per gallon. Propane weight equals 4.2 lbs per gallon.
- Add 10" if equipped with optional spare tire and carrier.

- Hitch weights are dependent upon how the trailer is equipped with options, on-board cargo and tank fluid levels. Actual hitch weights may be higher or lower than shown. It is recommended that the tow vehicle and hitch for your trailer have sufficient capacity to accommodate actual usage.

* = Estimated weights

N/A = Not available at the time of printing.

IMPORTANT— PLEASE READ: Product information, photography and illustrations included in this publication were as accurate as possible at the time of printing. For further product information and changes, please visit our website at www.fleetwoodrv.com or contact your local Fleetwood dealer. Prices, materials, design and specifications are subject to change without notice. All weights, fuel, liquid capacities and dimensions are approximate. Fleetwood has designed its recreational vehicles to provide a variety of uses for customers. Each vehicle features optimal seating, sleeping, storage and fluid capacities. The user is responsible for selecting the proper combination of loads (i.e., equipment, fluids, cargo, etc.) to ensure that the vehicle's capacities are not exceeded.

Standard Features

Interior

THROUGHOUT

- **AM/FM Stereo/CD Player w/4 Cube Living Room Speakers, Woofer & 2 Bedroom Mounted Speakers**
- **Built-in Magazine Rack**
- **Solid Passage Doors**
- 6-Gallon Propane Water Heater
- Cable TV Hook-Up/Phone Jack/Satellite Ready
- Decorative Wall Mirrors
- Hydroflame Forced Air, Direct Spark Ignition Furnace w/Thermostat
- Key Hooks Conveniently Located
- Oversized Light Switches
- Prewired for Roof Air Conditioner
- Slide-Out End Windows
- Solid State Converter w/Built-In Battery Charger
- Wall Mount 12V Decor Light (Slide-Out Models)
- Water Heater Bypass

GALLEY

- **Dometic® Double Door Propane/Electric Refrigerator**
- **Microwave w/Electronic Touch Pad**
- **Pots & Pans Drawer**
- **Upgraded Vinyl Flooring**
- 12V Dinette Decor Light
- 2 Galley Electrical Receptacles
- 4 Galley Drawers
- 60/40 Sink
- Deluxe Full Extension Roller Bearing Drawer Guides
- Half Shelves in Galley Overhead Cabinet
- Magic Chef® 3-Burner (1 High-Output) 22" Range w/Oven
- Metal Single Lever Faucet
- Pantry w/Adjustable Shelves
- Range Hood w/12V Light & Exhaust Fan
- Residential Height Countertops
- Sink Cover
- Sink Sprayer
- Soap Dispenser
- Spice Rack
- Toe Kick

BEDROOM

- **350 lb. Fixed Bunk Weight Rating (150 lb. Weight Rating for Combo Bunks)**
- **Built-In Bedroom TV Viewing Area**
- **Lift-Up Bed Platform w/Below Bed Storage (Most Models)**
- **Wardrobes Accommodate Residential Size Clothes Hangers**
- Angled Front Bedroom Cabinetry (Mid Profile 5th Wheels)
- Blackout Bedroom Ceiling Vent (5th Wheels)
- Innerspring Mattress
- Miniblinds Throughout (Except Bunk Windows)
- Raised Panel Overhead Cabinet Doors

BATHROOM

- **Medicine Cabinet w/Mirrored Door**
- **Removable Wire Basket (Most Models)**
- 12V Power Exhaust Roof Vent
- Wall-Switched Ceiling Light

SAFETY/CONVENIENCE

- Carbon Monoxide Detector/Alarm
- Entry Assist Handle
- Fire Extinguisher
- Propane Detector/Alarm
- Smoke Detector/Alarm

Exterior

THROUGHOUT

- **Dual 30 lb. Propane Cylinders w/Regulator & Auto-Changeover**
- **Patio Awning**
- **Propane Bib (Low Pressure) w/Quick Release Fitting**
- **Rear Bumper w/Sewer Hose Carrier**
- **Split Tank Propane System (5th Wheels)**
- 120V Patio Receptacle
- 30" Radius Entry Door
- Extended Pin Box & Power Landing Gear (5th Wheels)
- Fiberglass Exterior
- Front & Rear Colored Skirt End Caps
- Hitch Light
- Laminated Sidewalls
- Molded Wheel Well Skirts
- Phone & Satellite Jacks
- Quick Drain Holding Tank (Fresh Water)
- Radius Truss Roof Rafters
- Stabilizer Jacks (Slide-Out Models)
- TV Antenna
- Welded, Dual Battery Rack (Travel Trailer Models Only)

BODY STRUCTURE

- **Cambered Chassis**
- **One-Piece Seamless Roof**
- I-Beam Main Rails

SAFETY/CONVENIENCE

- **Tinted Safety Glass Windows**
- **Wall Mounted Systems Monitor Panel**
- 120V GFI Circuit Protection (Galley/Bath/Patio)
- 4-Wheel Electric Brakes
- Break-Away Emergency Disconnect Brake

STORAGE

- **Locking, Lined Luggage Compartments w/Lights**
- Finished Luggage Door Openings
- Radius Luggage Doors

Options

THROUGHOUT (Interior)

- 13,500 BTU Air Conditioner
- Free Standing Chair (Most Models)
- Living Room TV
- Raised Panel Refrigerator Insert

BEDROOM

- Bedroom/Living Room Carpet (Most Models)
- Upgraded Mattress

BATHROOM

- Bathroom Skylight
- Tub/Shower Enclosure

THROUGHOUT (Exterior)

- Adjustable Hitch Coupler
- Bicycle Rack Receiver
- Exterior Shower
- Roof Ladder
- Spare Tire w/Cover

STORAGE

- Exterior Garage Storage (Available on Select Models)

OPTIONAL VALUE PACKAGE

- 6-Gallon Propane/110V DSI (Direct Spark Ignition) Water Heater

- Additional Sink Cover
- Lend-a-Hand Assist Handle
- Range Cover
- Water Purifier

OPTIONAL EXTREME EDITION PACKAGE

- Double Thickness Insulation
- Heated & Enclosed Holding Tanks Located Below the Floor
- Mud Flaps

Standard Features

Interior

THROUGHOUT

- **AM/FM Stereo/CD Player w/4 Cube Living Room Speakers, Woofer & 2 Bedroom Mounted Speakers**
- **Built-in Magazine Rack**
- **Deluxe Flexsteel® Furniture Styling**
- **Solid Passage Doors**
- **Ventilating Slide-Out End Windows**
- 3 Panel Refrigerator Insert
- 6-Gallon Propane Water Heater
- Cable TV Hook-Up/Phone Jack/Satellite Ready
- Day/Night Shades in Living Room
- Decorative Framed Wall Mirrors
- Fluted Solid Slide-Out Fascia Moulding
- Hydroflame Forced Air, Direct Spark Ignition Furnace w/Thermostat
- Key Hooks Conveniently Located
- Oversized Light Switches
- Prewired for Roof Air Conditioner
- Raised Panel Arched Upper Cabinet Doors
- Slide-Out Sofa Overhead 12V Decor Lighting
- Soap Dispenser
- Solid State Converter w/Built-In Battery Charger
- Wall Mount 12V Decor Light (Slide-Out Models)
- Water Heater Bypass

GALLEY

- **Dometic® Double Door Propane/Electric Refrigerator**
- **Half Shelves in Galley Overhead Cabinet**
- **Metal Single Lever Faucet**
- **Microwave w/Electronic Touch Pad**
- **Pantry w/Adjustable Shelves**
- **Pots & Pans Drawer**
- **Upgraded Vinyl Flooring**
- 12V Dinette Decor Light
- 12V Fluorescent Lighting
- 2 Galley Electrical Receptacles
- 22" Range w/Oven
- 4 Galley Drawers
- 60/40 Sink
- Deluxe Full Extension Roller Bearing Drawer Guides
- Magic Chef® 3-Burner (1 High-Output) 22" Range w/Oven
- Raised Panel Refrigerator Insert
- Range Hood w/12V Light & Exhaust Fan
- Residential Height Countertops
- Sink Cover
- Sink Sprayer
- Spice Rack
- Toe Kick

BEDROOM

- **350 lb. Fixed Bunk Weight Rating (150 lb. Weight Rating for Combo Bunks)**
- **Built-In Bedroom TV Viewing Area**
- **Lift-Up Bed Platform w/Below Bed Storage (Most Models)**
- **Upgraded Innerspring Mattress**
- **Wardrobes Accommodate Residential Size Clothes Hangers**
- Angled Front Bedroom Cabinetry (Mid Profile 5th Wheels)
- Bedroom Swivel Reading Lights
- Blackout Bedroom Ceiling Vent (5th Wheels)
- Miniblinds Throughout (Except Bunk Windows)

BATHROOM

- **Medicine Cabinet w/Mirrored Door**
- **Removable Wire Basket (Most Models)**
- **Single Lever Lavy Faucet**
- 12V Power Exhaust Roof Vent
- 3-Bulb Lavy Vanity Light
- Wall-Switched Ceiling Light
- Carbon Monoxide Detector/Alarm
- Entry Assist Handle
- Fire Extinguisher
- Propane Detector/Alarm
- Smoke Detector/Alarm

SAFETY/CONVENIENCE

Bold Denotes Fleetwood's Key Features

Exterior

THROUGHOUT

- **Dual 30 lb. Propane Cylinders w/Regulator & Auto-Changeover**
- **Fiberglass Exterior w/Deluxe Graphics**
- **Laminated Sidewalls w/Welded Aluminum Frame**
- **Patio Awning**
- **Propane Bib (Low Pressure) w/Quick Release Fitting**
- **Rear Bumper w/Sewer Hose Carrier**
- **Split Tank Propane System (5th Wheels)**
- 120V Patio Receptacle
- Aerodynamic Front Cap
- Aluminum Bumper Cover
- Extended Pin Box & Power Landing Gear (5th Wheels)
- Front & Rear Colored Skirt End Caps
- Hitch Light
- Molded Step Trim
- Molded Wheel Well Skirts
- Phone & Satellite Jacks
- Quick Drain Holding Tank (Fresh Water)
- Radius Truss Roof Rafters
- Stabilizer Jacks (Slide-Out Models)
- TV Antenna
- Upgrade Custom Wheels
- Welded, Dual Battery Rack (Travel Trailer Models Only)

BODY STRUCTURE

- **Cambered Chassis**
- **One-Piece Seamless Roof**
- I-Beam Main Rails

SAFETY/CONVENIENCE

- **Tinted Safety Glass Windows**
- **Wall Mounted Systems Monitor Panel**
- 120V GFI Circuit Protection (Galley/Bath/Patio)
- 4-Wheel Electric Brakes
- Break-Away Emergency Disconnect Brake

STORAGE

- **Locking, Lined Luggage Compartments w/Lights**
- **Radius Luggage Doors**
- Finished Luggage Door Openings

Options

THROUGHOUT (Interior)

- 13,500 BTU Air Conditioner
- Free Standing Chair (Most Models)
- Living Room TV
- Sleeper Sofa (Most Models)
- Water Purifier

BATHROOM

- Bathroom Skylight
- Tub/Shower Enclosure

BEDROOM

- Bedroom/Living Room Carpet (Most Models)
- Pillow Shams

THROUGHOUT (Exterior)

- Bicycle Rack Receiver
- Exterior Shower
- Roof Ladder
- Spare Tire w/Cover

STORAGE

- Exterior Garage Storage (Available on Select Models)

OPTIONAL VALUE PACKAGE

- 6-Gallon Propane/110V DSI (Direct Spark Ignition) Water Heater

- Additional Sink Cover
- Lend-a-Hand Assist Handle
- Range Cover
- Water Purifier

OPTIONAL EXTREME EDITION PACKAGE

- Double Thickness Insulation
- Heated & Enclosed Holding Tanks Located Below the Floor
- Mud Flaps

What Drives You?

Maybe it's feeling like you're the only one on Earth. Perhaps it's the unique sense of closeness with the great outdoors. Or, it might be the joy that comes from spending quality time with family and friends. Whatever the reason, we know that you have a strong drive to experience everything that comes with spending time on the road. And for more than 50 years, we've shared that passion with you. Because we're RV enthusiasts ourselves, you can see our passion in the vehicles we design and build. Own a Fleetwood, and you'll feel like you're not just traveling, but embarking on an experience unlike any other. Set your own course for adventure and get out there and explore the world around you. Once you do, you'll see what it is that drives us — it's you.



RV OWNERCARE*

The Fleetwood One-Year Hitch to Bumper Warranty Coverage*
This comprehensive program includes systems, appliances, components and construction – with no additional costs to you.

One-Year Full Warranty*

Leaving the Fleetwood dealership after you've purchased your RV doesn't mean leaving Fleetwood's commitment to your satisfaction behind. This complete warranty is unique because it's just that – complete.

Fully Transferable*

Because we don't hesitate to stand behind our products, the complete **warranty is fully transferable** during the 12 months of warranty coverage, which is a plus for resale value.

National Coverage

Traveling to Spokane? Buffalo? We've got you covered with one of the nation's largest trained service networks. In fact, **1,100 Fleetwood dealers** are just a phone call away.

Require these features when you purchase your new RV... Fleetwood does.



www.fleetwoodrv.com

*For complete info see your Fleetwood dealer. ©2005. Fleetwood Enterprises, Inc. Printed in the USA. Inventory control number WI06B2 10/05.

FLEETWOOD TRAVELCADE CLUB As a Fleetwood owner, you're eligible to become a member of our owners' group, Fleetwood Travelcade Club. It's a perfect way to meet other Fleetwood owners who love to travel across America and share in the RV lifestyle. Call (877) 577-2560 or visit www.fleetwood.com/clubs to learn more and join the fun!

FLEETWOODRV.COM To locate a dealer near you, visit our website or call 1-800-444-4905. We can also be contacted at Fleetwood Customer Relations, P.O. Box 7638, Riverside, CA 92513-7638.

IMPORTANT—PLEASE READ Product information, photography and illustrations included in this publication were as accurate as possible at the time of printing. For further product information and changes, please visit our website at www.fleetwoodrv.com or contact your local Fleetwood dealer. Prices, materials, design and specifications are subject to change without notice. All weights, fuel, liquid capacities and dimensions are approximate. Fleetwood has designed its recreational vehicles to provide a variety of uses for customers. Each vehicle features optimal seating, sleeping, storage and fluid capacities. The user is responsible for selecting the proper combination of loads (i.e.: equipment, fluids, cargo, etc.) to ensure that the vehicle's capacities are not exceeded.

Your local Fleetwood dealer is:

