



# Terry

Think swift.



# Terry



*Terry Quantum 270FQS shown in Seaside interior decor with Summer Oak wood finish.*

**THE BUILT-IN AM/FM RADIO WITH CD PLAYER** (top left) is an ideal companion to have on those long journeys.

**THE DROP DOWN SOFA KICK PANEL** (middle left) conveniently provides some additional storage space under the sofa.

Fleetwood focuses on building and designing a superior RV with trusted name brands, while the competition often builds their own furniture that simply doesn't stack up. Fleetwood features only the best like comfortable Flexsteel® furniture with a lifetime warranty on the frame. Other notable name brands include Dometic®, Magic Chef® and Hydroflame.

**AN ENTERTAINMENT CENTER** (lower left) features a large TV shelf with overhead/underneath storage, perfect for your DVDs (TV & VCR not included).

**OVERHEAD STORAGE** (top right) is a great place to keep books, board games, CDs or anything else for your travels.

**UNDER-THE-DINETTE-STORAGE** (middle right) is accessible under the seat cushion or through the side door for your storage needs.

**AN INTEGRATED MAGAZINE RACK** (lower right) is the perfect place to keep your favorite publications on your travels.





### Best in Class.

Terry stands head and shoulders above the competition with its superior construction and design. Simply put, Terry has the best looking travel trailers and fifth wheels with the best looking interiors at its price point. Other travel trailer's & fifth wheels can't compete with our strong, laminated and smooth hard wall construction, which looks fantastic while providing improved

insulation and increased rigidity over the competition's design. Our awesome looking graphics are nothing short of breathtaking, while features like radius entry and luggage doors give Terry a very clean and contemporary look. Not only does it look great, but is very easy to clean so you can always keep your Terry in pristine condition.



**A SPACIOUS DOMETIC® 6 CU. FT. REFRIGERATOR** is great to have on the road. Perfect for storing food and beverages.



**UNDER-THE-SINK STORAGE** is a convenient place to keep cleaning supplies, just like home.  
**A BUILT-IN SPICE RACK** makes the galley even more accommodating for your cooking needs.



**THE GALLEY** boasts great features like a microwave, a 3 burner stove with a 22" range, plenty of storage space for full-sized dishes, plates and cookware, and a contemporary/stylish design.



**A SINGLE LEVER FAUCET W/SPRAYER** (water purifier is optional) is great for quick cleanup. Also featuring a built in soap dispenser for hand washing and a sink lid for additional working space.  
**A DRAWER FOR POTS & PANS** is specifically designed for large cookware, featuring full extension hardware, giving you full access.



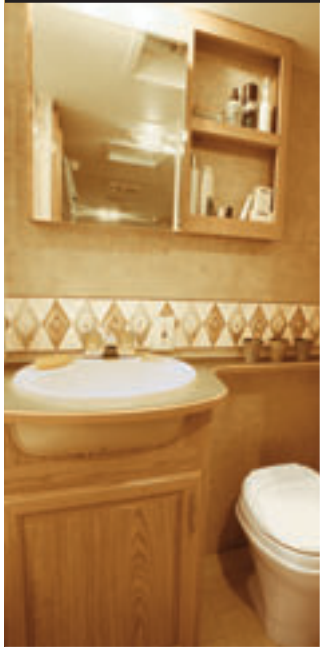
**THE PANTRY** features convenient, adjustable shelves so you can store a variety of non-perishable goods.



## For your Comfort.

Terry's bedroom provides an ideal space to rest in comfort after a long day of fun and adventure. Relax in the innerspring mattress for getting some quick Z's when you need them most. Numerous floor plan configurations give you the option of

single or double bunk beds to accommodate your sleeping needs. In the bathroom, you'll love a medicine cabinet with mirrored door, a power vent for air circulation and a residential towel rack just like home. Enjoy.



**THE BATHROOM** features a residential sized sink and a mirrored medicine cabinet with plenty of room for toiletries.



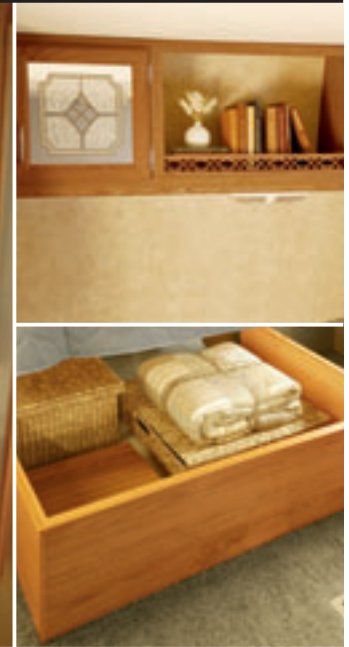
**SHOWER WITH WATERSAVER** has integrated ABS shower walls, easily useable as a tub. Watersaver is a nice feature on the showerhead that allows you to conserve water while dry camping.



**THE BEDROOM** boasts a stylish interior decor, raised mirrored panel overhead cabinets, his/her wardrobes for additional storage and mini-blinds to keep out, or let in light. This is the Terry 270FQS shown with Iceberg interior decor and Summer Oak wood finish.



**THE WARDROBE** includes a slotted clothes rack that can accommodate full-size hangers for your clothing needs.



**OVERHEAD STORAGE** is a great place to keep books, board games, CDs or anything else for your travels.

**UNDER-THE-BED STORAGE** is an ideal place to keep extra linens, towels or even clothing (offered on most models).

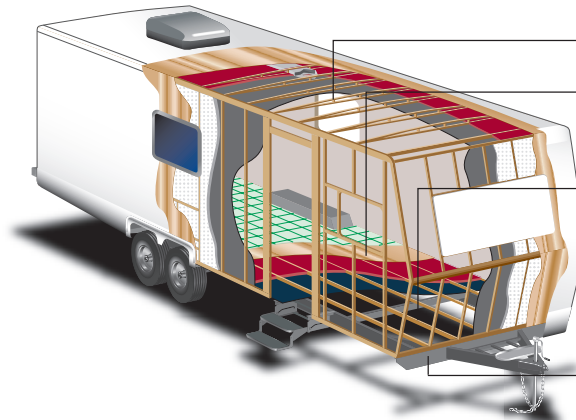


## Setting the Standard in Travel Trailer and 5th Wheel Quality.

Fleetwood® prototypes are exposed to thousands of miles of durability testing.

Those components that don't survive are redesigned until they do. This sets the

standard in safety and durability.



**ENGINEERED RADIUSED CEILING TRUSS**  
ensures strength, water runoff and reduced weight.

**5/8" FLOOR DECKING**  
provides the dependable decking needed to ensure an adequate foundation. Further stability is added by interlocking these sheets using "tongue in groove" construction.

**2X3 FLOOR JOIST**  
allows for the placement of in-floor furnace ducting without compromising structural integrity.

**SMOOTH GLOSS FIBERGLASS EXTERIOR SIDING**  
adds more structural integrity than aluminum siding, which provides a glossy surface that is easy-to-clean and adds long lasting beauty.

**REINFORCED CAMBERED STEEL CHASSIS**  
provides optimal strength, durability and performance.



**CUBE SPEAKERS AND SUB WOOFER**  
will make your favorite music sound even better.

**A WATER FILTER**  
(optional) is very functional, providing you with fresh filtered water for drinking.



**TINTED SAFETY GLASS WINDOWS**  
help keep the sun out and also aid in reducing the likelihood that fabrics will fade.



**LARGE LEND-A-HAND ENTRY ASSIST HANDLE**  
(optional) makes it easy to enter or exit.



**GARAGE STORAGE**  
(optional) gives you an abundance of room for storing larger items, like lawn chairs, a BBQ or a large cooler.



**A LOW PRESSURE PROPANE CONNECTOR**  
allows you to hook up a BBQ for great cooking while camping.



**PASS THROUGH STORAGE**  
(most models) is perfect for storing oversized items like snowboards, surfboards or fishing poles.



**THE EXTERIOR SHOWER**  
(optional) is a very convenient feature for a quick rinse off after a day of playing.



## A Quantum Advantage.

The Terry Quantum ups the ante even more for travel trailers and fifth wheels. This unique, sleek and one of a kind RV is sure to create a buzz on the road. The Quantum features strong aluminum framing for a superior construction. A redesigned front cap and a deluxe graphic package, not available on Terry, gives Quantum stylish looks and overall esthetics

guaranteed to attract attention while you're out exploring the road. Quantum also includes an enclosed and heated fresh water tank (standard) to reduce the chance of freezing in cold temperatures. This one of a kind travel trailer gives you standard features and fantastic options that other travel trailers and fifth wheels simply can't stack up to.



### THE BATHROOM

features an elegant single handle faucet that's easy to operate and standard 3 bulb vanity light, providing additional lighting.



### THE FIBERGLASS FRONT CAP

is aerodynamic, sleek and appealing to the eye, for an upscale look and feel.



### ALUMINUM FRAME CONSTRUCTION

Terry Quantum's welded aluminum frame construction coupled with Fleetwood's lamination process provides superior sidewalls which are not just strong and corrosion resistant, but also lightweight.



### SWIVEL READING LIGHTS

in the bedroom make it easy and convenient to curl up to a good book while you're out on the road.



### DECORATIVE LIGHTING

in the living room adds to the upscale atmosphere, making your travels that much more enjoyable.

## FOUR INTERIORS. THE CHOICE IS YOURS.

For '06, choose from diverse interior fabric motifs. With each interior, you can choose from two beautiful wood finishes.

### TERRY EXTERIORS



TERRY



TERRY QUANTUM

### TERRY INTERIOR COLOR CHOICES

#### ICEBERG

Living/Dining Room



Sofa Bed & Dinette Cushions

Dinette Cushions

Swivel Chair & Throw Pillows

Bedroom



Headboard

Bedsprad & Window Treatments

#### WILLOW BEND

Living/Dining Room

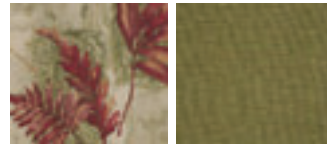


Sofa Bed & Dinette Cushions

Throw Pillows

Swivel Chair

Bedroom

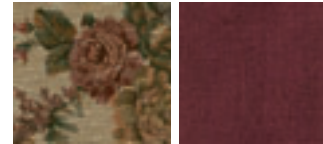


Headboard

Bedsprad & Window Treatments

#### ROSE PETAL

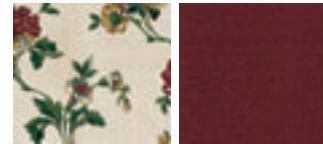
Living/Dining Room



Sofa Bed & Dinette Cushions

Swivel Chair & Throw Pillows

Bedroom



Headboard & Bedsprad

Window Treatments

#### SEASIDE

Living/Dining Room



Sofa Bed & Dinette Cushions

Swivel Chair

Throw Pillows

Bedroom



Headboard

Bedsprad

Window Treatments

### INTERIOR WOOD FINISHES

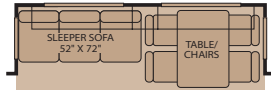
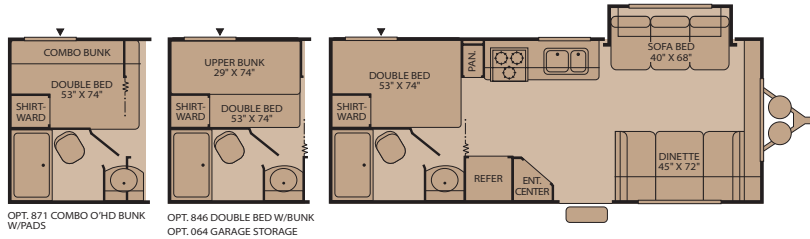


Summer Oak

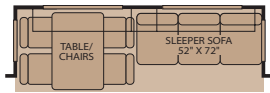
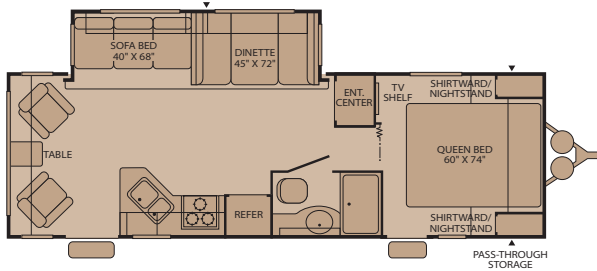
Windsor Birch

# Travel Trailer Floor Plans

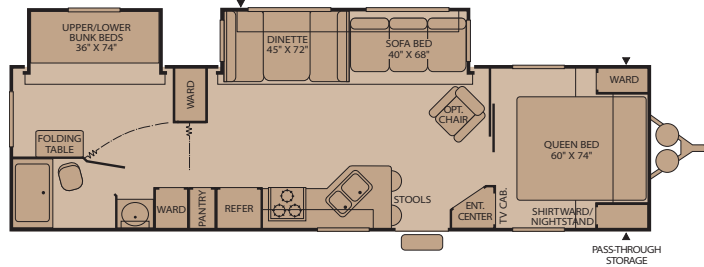
**220RBS** ◆  
Single Slide-Out  
Sleeps 6



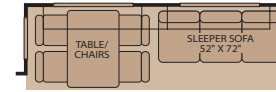
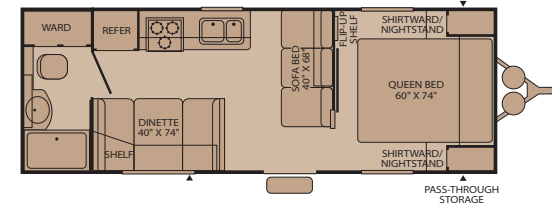
**260RLS** ◆  
Single Slide-Out  
Sleeps 6



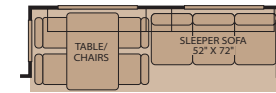
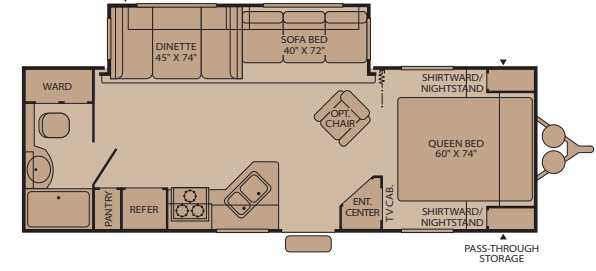
**3102BDS** ◆  
Double Slide-Out  
Sleeps 8



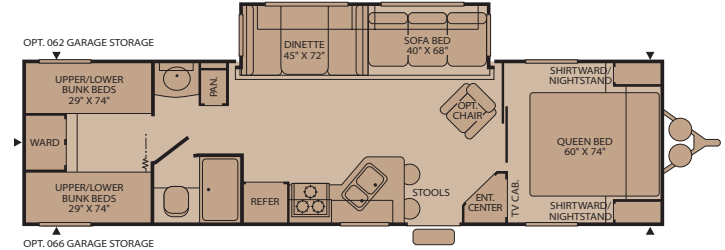
**250FQ** ◆  
Sleeps 6



**270FQS** ◆ ●  
Single Slide-Out  
Sleeps 6



**320DBHS** ◆ ●  
Single Slide-Out  
Sleeps 10



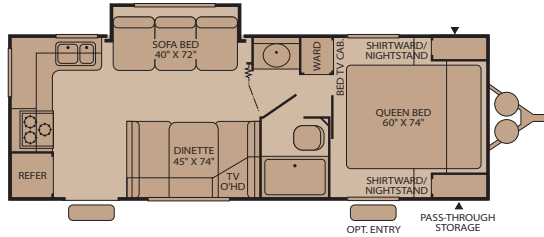
Terry = ◆ Terry Quantum = ●

Exterior Storage = ▲

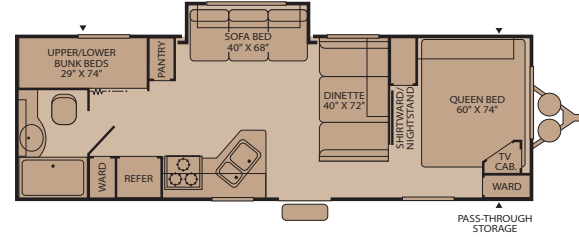
*Some models are not available in all areas of the country.  
Please see your local dealer for model availability.*



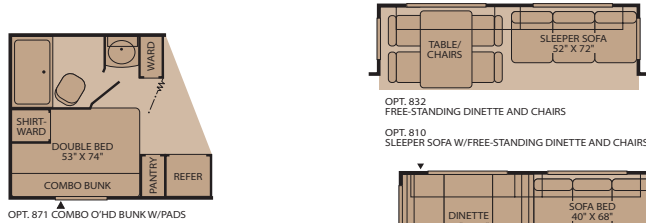
**250RKS** ♦  
Single Slide-Out  
Sleeps 6



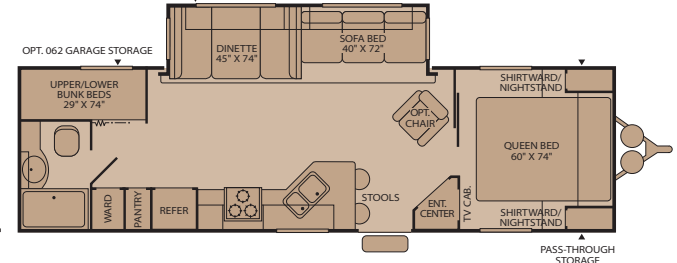
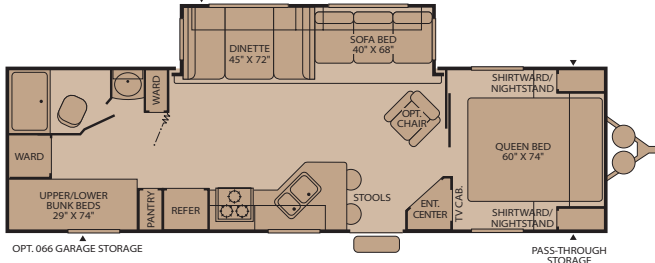
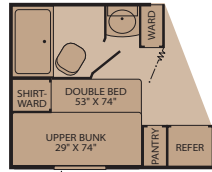
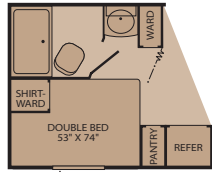
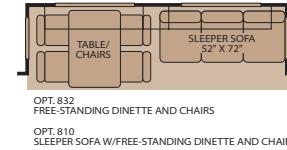
**260BHS** ♦  
Single Slide-Out  
Sleeps 8



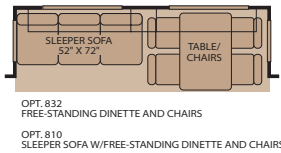
**300BHS** ♦  
Single Slide-Out  
Sleeps 8



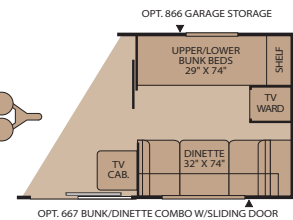
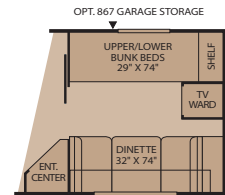
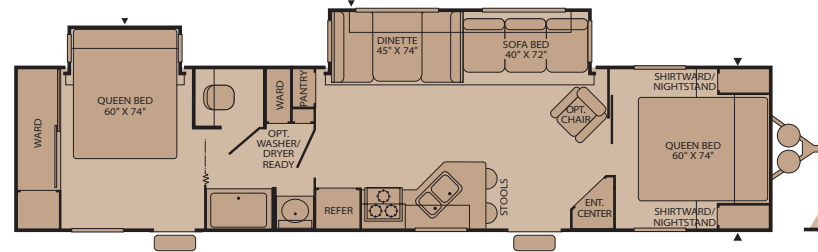
**300FQS** ♦ ●  
Single Slide-Out  
Sleeps 8



**330FKDS** ♦ ●  
Double Slide-Out  
Sleeps 6



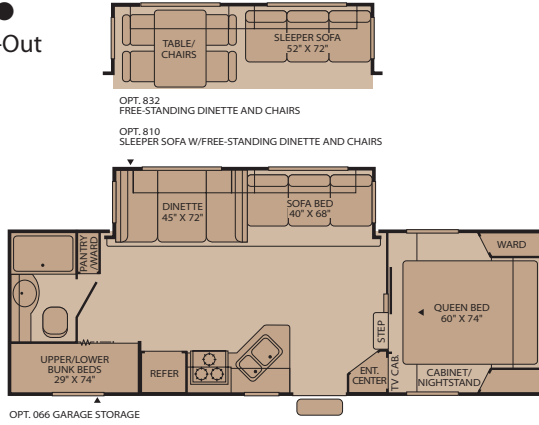
**3902BDS** ♦  
Double Slide-Out  
Sleeps 8



*Sleeping capacity based on standard layout. Optional furniture may increase or decrease sleeping capacity.*

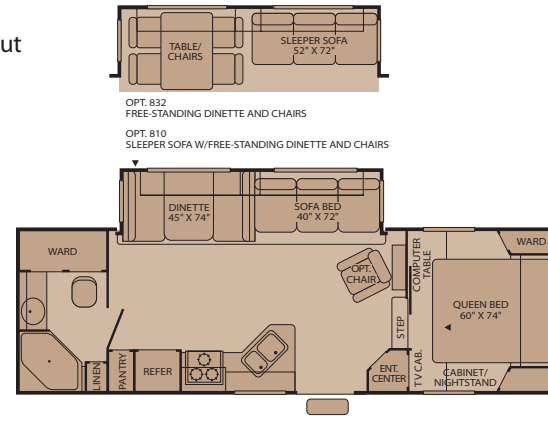
# Fifth Wheel Floor Plans

**255BHS** ♦ ●  
Single Slide-Out  
Sleeps 8



Mid Profile Fifth Wheel

**275CK5** ♦  
Single Slide-Out  
Sleeps 6



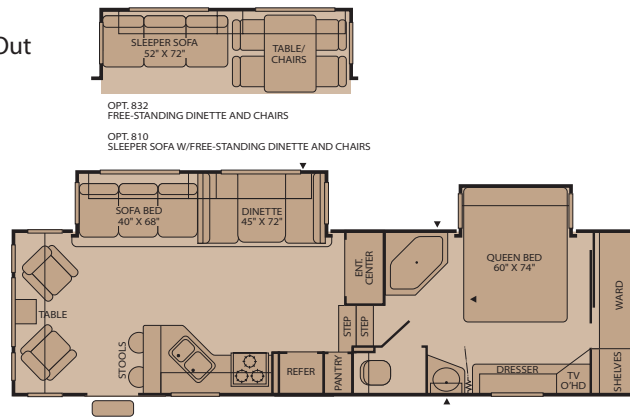
Mid Profile Fifth Wheel

**295RLS** ♦ ●  
Single Slide-Out  
Sleeps 6



Mid Profile Fifth Wheel

**305RLDS** ●  
Double Slide-Out  
Sleeps 6



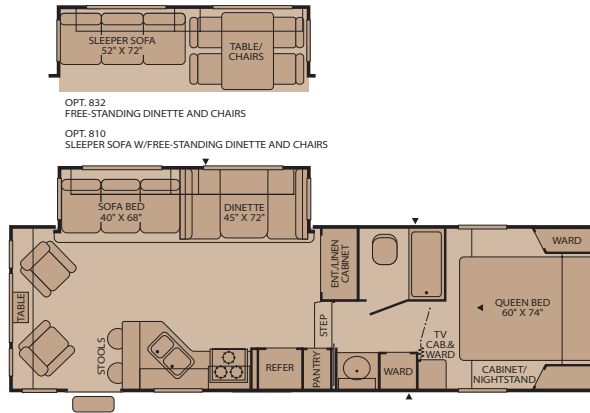
High Profile Fifth Wheel

Terry = ♦ Terry Quantum = ●

Exterior Storage = ▲

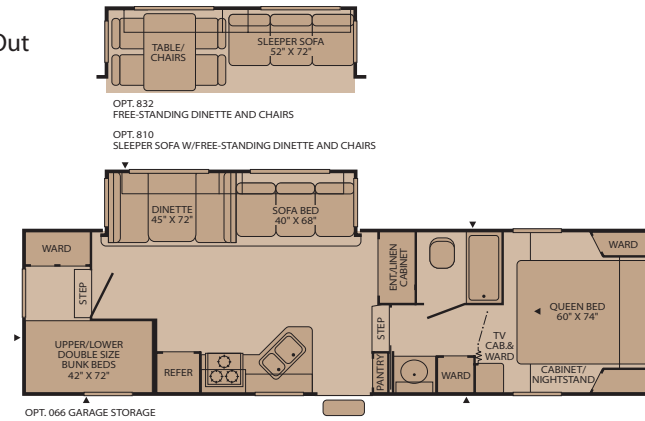
*Some models are not available in all areas of the country.  
Please see your local dealer for model availability.*

**285RLS** ◆ ●  
Single Slide-Out  
Sleeps 6



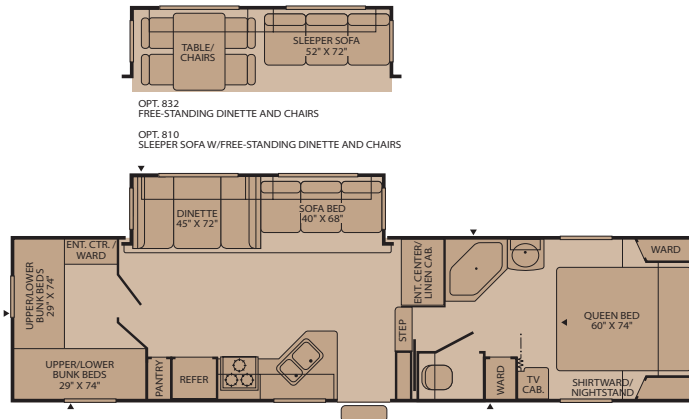
Mid Profile Fifth Wheel

**2952BS** ◆ ●  
Single Slide-Out  
Sleeps 10



Mid Profile Fifth Wheel

**315BHS** ◆ ●  
Single Slide-Out  
Sleeps 10



Mid Profile Fifth Wheel

**To Our Customers...**

To make sure that you get the maximum satisfaction out of your recreational vehicle purchase, there are several things you should know:

1. Learn all you can about the travel trailer or fifth wheel you're planning to buy. Don't rely on word of mouth. Get the facts about the actual trailer length, width, unloaded weight with options, Gross Vehicle Weight Rating, and cargo carrying capacity. These are usually available in the manufacturer's sales literature or from the Cargo Carrying Capacity Label located in each trailer. Be sure to check this information **before** you decide which unit to buy.
2. Verify the towing capacity of your tow vehicle. If you don't know, or aren't sure, you can ask at your automotive dealership. Be sure to match its tow rating to the loaded (not dry) weight of your trailer. Include the weight of water, additional accessories, clothing, food, and gear. To help Fleetwood travel trailer customers estimate this total weight, our Gross Vehicle Weight Ratings reflect the maximum weight of the trailer when fully loaded for camping. Be sure the weight of the tow vehicle plus the weight of your trailer do not exceed the Gross Combined Weight Rating of the tow vehicle.

Taking these simple steps before you buy will help ensure that your trailer and tow vehicle combination is just what you wanted.

Happy Camping!

*Sleeping capacity based on standard layout. Optional furniture may increase or decrease sleeping capacity.*



Weights and Measurements *for Terry*

## TRAVEL TRAILERS

WEIGHTS	220RBS	250FQ	250RKS	260BHS	260RLS	270FQS	300BHS	300FQS	3102BDS	320DBHS	330FKDS	3902BDS
GVWR (lbs) <sup>1</sup>	6,500	7,500	7,500	7,700	8,400	8,000	9,500	9,600	9,950	9,600	10,700	11,300
Gross Dry Weight (lbs) <sup>2,6</sup>	4,890	4,812	5,320	5,538	6,133*	5,933	6,708	6,797	7,558	6,827	8,213*	8,679*
Cargo Carrying Capacity (lbs) <sup>3,6</sup>	1,610	2,688	2,180	2,162	2,267*	2,067	2,792	2,803	2,392	2,773	2,487*	2,621*
Hitch Dry Weight (lbs) <sup>2,6,9</sup>	758	658	569	717	N/A	828	828	969	997	875	N/A	N/A

## DIMENSIONS AND CAPACITIES

Length (Feet and Inches) <sup>4,6,8</sup>	24' 2"	25' 11"	26' 2"	27' 11"	29' 0"	27' 10"	32' 0"	31' 10"	33' 11"	33' 11"	33' 11"	39' 7"
Height (Feet and Inches) <sup>5,6</sup>	9' 8"	9' 11"	9' 8"	9' 11"	10' 2"	10' 2"	10' 2"	10' 2"	10' 4"	10' 2"	10' 2"	10' 2"
Fresh Water Holding Tank (gal) <sup>6,7</sup>	50	50	50	50	50	50	50	50	50	50	50	50
Grey Water Holding Tank (gal) <sup>6,7</sup>	40	40	40/40	40	40	40	40	40	40	40	40/40	40
Black Water Holding Tank (gal) <sup>6,7</sup>	40	40	40	40	40	40	40	40	40	40	40	40
Propane Capacity (lbs) <sup>6,7</sup>	60	60	60	60	60	60	60	60	60	60	60	60
Tire Size (Load Range)	ST205/ 75R 14(C)	ST205/ 75R 14(C)	ST205/ 75R 14(C)	ST205/ 75R 14(C)	ST225/ 75R 15(C)	ST205/ 75R 15(C)	ST225/ 75R 15(C)	ST225/ 75R 15(C)	ST225/ 75R 15(D)	ST225/ 75R 15(D)	ST225/ 75R 15(D)	ST225/ 75R 15(D)

## FIFTH WHEELS

WEIGHTS	255BHS	275CKS	285RLS	2952BS	295RLS	315BHS
GVWR (lbs) <sup>1</sup>	9,700	9,500	9,950	11,300	11,300	11,300
Gross Dry Weight (lbs) <sup>2,6</sup>	6,826	6,874	7,777	8,119	8,022*	8,608*
Cargo Carrying Capacity (lbs) <sup>3,6</sup>	2,874	2,626	2,173	3,181	3,278*	3,092*
Hitch Dry Weight (lbs) <sup>2,6,9</sup>	1,264	1,196	1,545	1,374	N/A	N/A

## DIMENSIONS AND CAPACITIES

Length (Feet and Inches) <sup>4,6,8</sup>	27' 11"	28' 3"	30' 4"	32' 5"	31' 11"	35' 0"
Height (Feet and Inches) <sup>5,6</sup>	11' 8"	11' 8"	11' 9"	11' 10"	11' 9"	11' 10"
Fresh Water Holding Tank (gal) <sup>6,7</sup>	50	40	40	50	50	50
Grey Water Holding Tank (gal) <sup>6,7</sup>	40	40	40/40	40/40	40/21	40/40
Black Water Holding Tank (gal) <sup>6,7</sup>	40	40	40	40	40	40
Propane Capacity (lbs) <sup>6,7</sup>	60	60	60	60	60	60
Tire Size (Load Range)	ST225/ 75R 15(C)	ST225/ 75R 15(C)	ST225/ 75R 15(D)	ST225/ 75R 15(D)	ST225/ 75R 15(D)	ST235/ 80R 16(D)

## Weights and Measurements for Terry Quantum

WEIGHTS	TRAVEL TRAILERS				FIFTH WHEELS					
	270FQS	300FQS	320DBHS	330FKDS	255BHS	285RLS	2952BS	295RLS	305RLDS	315BHS
<b>GVWR (lbs)<sup>1</sup></b>	8,000	9,500	9,600	10,700	9,900	9,950	11,300	11,300	11,600	11,700
<b>Gross Dry Weight (lbs)<sup>2,6</sup></b>	6,128	6,917	7,076	8,337*	7,033	7,865	8,166	8,166*	9,037*	8,527
<b>Cargo Carrying Capacity (lbs)<sup>3,6</sup></b>	1,872	2,583	2,524	2,363*	2,867	2,085	3,134	3,134*	2,563*	3,173
<b>Hitch Dry Weight (lbs)<sup>2,6,9</sup></b>	850	882	1,010	N/A	1,333	1,569	1,398	N/A	N/A	1,598

## DIMENSIONS AND CAPACITIES

<b>Length (Feet and Inches)<sup>4,6,8</sup></b>	27' 10"	31' 10"	33' 11"	33' 11"	27' 11"	30' 4"	32' 5"	31' 11"	31' 11"	35' 0"
<b>Height (Feet and Inches)<sup>5,6</sup></b>	10' 2"	10' 2"	10' 2"	10' 2"	11' 8"	11' 8"	11' 9"	11' 9"	11' 9"	11' 10"
<b>Fresh Water Holding Tank (gal)<sup>6,7</sup></b>	50	50	50	50	40	40	50	50	50	50
<b>Grey Water Holding Tank (gal)<sup>6,7</sup></b>	40	40	40	40/40	40	40/40	40/40	40/21	40/21	40/40
<b>Black Water Holding Tank (gal)<sup>6,7</sup></b>	40	40	40	40	40	40	40	40	40	40
<b>Propane Capacity (lbs)<sup>6,7</sup></b>	60	60	60	60	60	60	60	60	60	60
<b>Tire Size (Load Range)</b>	ST205/ 75R 15(C)	ST225/ 75R 15(C)	ST225/ 75R 15(D)	ST225/ 75R 15(D)	ST225/ 75R 15(C)	ST225/ 75R 15(D)	ST225/ 75R 15(D)	ST225/ 75R 15(D)	ST225/ 75R 15(D)	ST235/ 80R 16(D)

- GVWR (Gross Vehicle Weight Rating) is the maximum permissible weight of this trailer when fully loaded. It includes all weight at the trailer axle(s) and tongue or pin.
- All dry weights are based on the standard model and do not include optional features or equipment.
- Cargo Carrying Capacity is determined by subtracting Gross Dry Weight from GVWR. Cargo Carrying Capacity includes all fluids, optional features, equipment, and personal cargo.
- Length taken from hitch or pin box to rear bumper (excludes accessories). Trailer length includes 3' 6" for hitch; fifth wheel includes standard pin box.
- Add 9" if equipped with optional roof air conditioner.
- Approximate.
- Water weight equals 8.3 lbs per gallon. Propane weight equals 4.2 lbs per gallon.
- Add 10" if equipped with optional spare tire and carrier.

- Hitch weights are dependent upon how the trailer is equipped with options, on-board cargo and tank fluid levels. Actual hitch weights may be higher or lower than shown. It is recommended that the tow vehicle and hitch for your trailer have sufficient capacity to accommodate actual usage.

\* = Estimated weights

N/A = Not available at the time of printing.

**IMPORTANT— PLEASE READ:** Product information, photography and illustrations included in this publication were as accurate as possible at the time of printing. For further product information and changes, please visit our website at [www.fleetwoodrv.com](http://www.fleetwoodrv.com) or contact your local Fleetwood dealer. Prices, materials, design and specifications are subject to change without notice. All weights, fuel, liquid capacities and dimensions are approximate. Fleetwood has designed its recreational vehicles to provide a variety of uses for customers. Each vehicle features optimal seating, sleeping, storage and fluid capacities. The user is responsible for selecting the proper combination of loads (i.e., equipment, fluids, cargo, etc.) to ensure that the vehicle's capacities are not exceeded.

## Standard Features

### Interior

#### THROUGHOUT

- **AM/FM Stereo/CD Player w/4 Cube Living Room Speakers, Woofer & 2 Bedroom Mounted Speakers**
- **Built-in Magazine Rack**
- **Solid Passage Doors**
- 6-Gallon Propane Water Heater
- Cable TV Hook-Up/Phone Jack/Satellite Ready
- Decorative Wall Mirrors
- Hydroflame Forced Air, Direct Spark Ignition Furnace w/Thermostat
- Key Hooks Conveniently Located
- Oversized Light Switches
- Prewired for Roof Air Conditioner
- Slide-Out End Windows
- Solid State Converter w/Built-In Battery Charger
- Wall Mount 12V Decor Light (Slide-Out Models)
- Water Heater Bypass

#### GALLEY

- **Dometic® Double Door Propane/Electric Refrigerator**
- **Microwave w/Electronic Touch Pad**
- **Pots & Pans Drawer**
- **Upgraded Vinyl Flooring**
- 12V Dinette Decor Light
- 2 Galley Electrical Receptacles
- 4 Galley Drawers
- 60/40 Sink
- Deluxe Full Extension Roller Bearing Drawer Guides
- Half Shelves in Galley Overhead Cabinet
- Magic Chef® 3-Burner (1 High-Output) 22" Range w/Oven
- Metal Single Lever Faucet
- Pantry w/Adjustable Shelves
- Range Hood w/12V Light & Exhaust Fan
- Residential Height Countertops
- Sink Cover
- Sink Sprayer
- Soap Dispenser
- Spice Rack
- Toe Kick

#### BEDROOM

- **350 lb. Fixed Bunk Weight Rating (150 lb. Weight Rating for Combo Bunks)**
- **Built-In Bedroom TV Viewing Area**
- **Lift-Up Bed Platform w/Below Bed Storage (Most Models)**
- **Wardrobes Accommodate Residential Size Clothes Hangers**
- Angled Front Bedroom Cabinetry (Mid Profile 5th Wheels)
- Blackout Bedroom Ceiling Vent (5th Wheels)
- Innerspring Mattress
- Miniblinds Throughout (Except Bunk Windows)
- Raised Panel Overhead Cabinet Doors

#### BATHROOM

- **Medicine Cabinet w/Mirrored Door**
- **Removable Wire Basket (Most Models)**
- 12V Power Exhaust Roof Vent
- Wall-Switched Ceiling Light

#### SAFETY/CONVENIENCE

- Carbon Monoxide Detector/Alarm
- Entry Assist Handle
- Fire Extinguisher
- Propane Detector/Alarm
- Smoke Detector/Alarm

### Exterior

#### THROUGHOUT

- **Dual 30 lb. Propane Cylinders w/Regulator & Auto-Changeover**
- **Patio Awning**
- **Propane Bib (Low Pressure) w/Quick Release Fitting**
- **Rear Bumper w/Sewer Hose Carrier**
- **Split Tank Propane System (5th Wheels)**
- 120V Patio Receptacle
- 30" Radius Entry Door
- Extended Pin Box & Power Landing Gear (5th Wheels)
- Fiberglass Exterior
- Front & Rear Colored Skirt End Caps
- Hitch Light
- Laminated Sidewalls
- Molded Wheel Well Skirts
- Phone & Satellite Jacks
- Quick Drain Holding Tank (Fresh Water)
- Radius Truss Roof Rafters
- Stabilizer Jacks (Slide-Out Models)
- TV Antenna
- Welded, Dual Battery Rack (Travel Trailer Models Only)

#### BODY STRUCTURE

- **Cambered Chassis**
- **One-Piece Seamless Roof**
- I-Beam Main Rails

#### SAFETY/CONVENIENCE

- **Tinted Safety Glass Windows**
- **Wall Mounted Systems Monitor Panel**
- 120V GFI Circuit Protection (Galley/Bath/Patio)
- 4-Wheel Electric Brakes
- Break-Away Emergency Disconnect Brake

#### STORAGE

- **Locking, Lined Luggage Compartments w/Lights**
- Finished Luggage Door Openings
- Radius Luggage Doors

## Options

#### THROUGHOUT (Interior)

- 13,500 BTU Air Conditioner
- Free Standing Chair (Most Models)
- Living Room TV
- Raised Panel Refrigerator Insert

#### BEDROOM

- Bedroom/Living Room Carpet (Most Models)
- Upgraded Mattress

#### BATHROOM

- Bathroom Skylight
- Tub/Shower Enclosure

#### THROUGHOUT (Exterior)

- Adjustable Hitch Coupler
- Bicycle Rack Receiver
- Exterior Shower
- Roof Ladder
- Spare Tire w/Cover

#### STORAGE

- Exterior Garage Storage (Available on Select Models)

#### OPTIONAL VALUE PACKAGE

- 6-Gallon Propane/110V DSI (Direct Spark Ignition) Water Heater

- Additional Sink Cover
- Lend-a-Hand Assist Handle
- Range Cover
- Water Purifier

#### OPTIONAL EXTREME EDITION PACKAGE

- Double Thickness Insulation
- Heated & Enclosed Holding Tanks Located Below the Floor
- Mud Flaps



## Standard Features

### Interior

#### THROUGHOUT

- **AM/FM Stereo/CD Player w/4 Cube Living Room Speakers, Woofer & 2 Bedroom Mounted Speakers**
- **Built-in Magazine Rack**
- **Deluxe Flexsteel® Furniture Styling**
- **Solid Passage Doors**
- **Ventilating Slide-Out End Windows**
- 3 Panel Refrigerator Insert
- 6-Gallon Propane Water Heater
- Cable TV Hook-Up/Phone Jack/Satellite Ready
- Day/Night Shades in Living Room
- Decorative Framed Wall Mirrors
- Fluted Solid Slide-Out Fascia Moulding
- Hydroflame Forced Air, Direct Spark Ignition Furnace w/Thermostat
- Key Hooks Conveniently Located
- Oversized Light Switches
- Prewired for Roof Air Conditioner
- Raised Panel Arched Upper Cabinet Doors
- Slide-Out Sofa Overhead 12V Decor Lighting
- Soap Dispenser
- Solid State Converter w/Built-In Battery Charger
- Wall Mount 12V Decor Light (Slide-Out Models)
- Water Heater Bypass

#### GALLEY

- **Dometic® Double Door Propane/Electric Refrigerator**
- **Half Shelves in Galley Overhead Cabinet**
- **Metal Single Lever Faucet**
- **Microwave w/Electronic Touch Pad**
- **Pantry w/Adjustable Shelves**
- **Pots & Pans Drawer**
- **Upgraded Vinyl Flooring**
- 12V Dinette Decor Light
- 12V Fluorescent Lighting
- 2 Galley Electrical Receptacles
- 22" Range w/Oven
- 4 Galley Drawers
- 60/40 Sink
- Deluxe Full Extension Roller Bearing Drawer Guides
- Magic Chef® 3-Burner (1 High-Output) 22" Range w/Oven
- Raised Panel Refrigerator Insert
- Range Hood w/12V Light & Exhaust Fan
- Residential Height Countertops
- Sink Cover
- Sink Sprayer
- Spice Rack
- Toe Kick

#### BEDROOM

- **350 lb. Fixed Bunk Weight Rating (150 lb. Weight Rating for Combo Bunks)**
- **Built-In Bedroom TV Viewing Area**
- **Lift-Up Bed Platform w/Below Bed Storage (Most Models)**
- **Upgraded Innerspring Mattress**
- **Wardrobes Accommodate Residential Size Clothes Hangers**
- Angled Front Bedroom Cabinetry (Mid Profile 5th Wheels)
- Bedroom Swivel Reading Lights
- Blackout Bedroom Ceiling Vent (5th Wheels)
- Miniblinds Throughout (Except Bunk Windows)

#### BATHROOM

- **Medicine Cabinet w/Mirrored Door**
- **Removable Wire Basket (Most Models)**
- **Single Lever Lavy Faucet**
- 12V Power Exhaust Roof Vent
- 3-Bulb Lavy Vanity Light
- Wall-Switched Ceiling Light
- SAFETY/CONVENIENCE
- Carbon Monoxide Detector/Alarm
- Entry Assist Handle
- Fire Extinguisher
- Propane Detector/Alarm
- Smoke Detector/Alarm

*Bold Denotes Fleetwood's Key Features*

### Exterior

#### THROUGHOUT

- **Dual 30 lb. Propane Cylinders w/Regulator & Auto-Changeover**
- **Fiberglass Exterior w/Deluxe Graphics**
- **Laminated Sidewalls w/Welded Aluminum Frame**
- **Patio Awning**
- **Propane Bib (Low Pressure) w/Quick Release Fitting**
- **Rear Bumper w/Sewer Hose Carrier**
- **Split Tank Propane System (5th Wheels)**
- 120V Patio Receptacle
- Aerodynamic Front Cap
- Aluminum Bumper Cover
- Extended Pin Box & Power Landing Gear (5th Wheels)
- Front & Rear Colored Skirt End Caps
- Hitch Light
- Molded Step Trim
- Molded Wheel Well Skirts
- Phone & Satellite Jacks
- Quick Drain Holding Tank (Fresh Water)
- Radius Truss Roof Rafters
- Stabilizer Jacks (Slide-Out Models)
- TV Antenna
- Upgrade Custom Wheels
- Welded, Dual Battery Rack (Travel Trailer Models Only)

#### BODY STRUCTURE

- **Cambered Chassis**
- **One-Piece Seamless Roof**
- I-Beam Main Rails

#### SAFETY/CONVENIENCE

- **Tinted Safety Glass Windows**
- **Wall Mounted Systems Monitor Panel**
- 120V GFI Circuit Protection (Galley/Bath/Patio)
- 4-Wheel Electric Brakes
- Break-Away Emergency Disconnect Brake

#### STORAGE

- **Locking, Lined Luggage Compartments w/Lights**
- **Radius Luggage Doors**
- Finished Luggage Door Openings

## Options

#### THROUGHOUT (Interior)

- 13,500 BTU Air Conditioner
- Free Standing Chair (Most Models)
- Living Room TV
- Sleeper Sofa (Most Models)
- Water Purifier

#### BATHROOM

- Bathroom Skylight
- Tub/Shower Enclosure

#### BEDROOM

- Bedroom/Living Room Carpet (Most Models)
- Pillow Shams

#### THROUGHOUT (Exterior)

- Bicycle Rack Receiver
- Exterior Shower
- Roof Ladder
- Spare Tire w/Cover

#### STORAGE

- Exterior Garage Storage (Available on Select Models)

#### OPTIONAL VALUE PACKAGE

- 6-Gallon Propane/110V DSI (Direct Spark Ignition) Water Heater

- Additional Sink Cover
- Lend-a-Hand Assist Handle
- Range Cover
- Water Purifier

#### OPTIONAL EXTREME EDITION PACKAGE

- Double Thickness Insulation
- Heated & Enclosed Holding Tanks Located Below the Floor
- Mud Flaps

## What Drives You?

Maybe it's feeling like you're the only one on Earth. Perhaps it's the unique sense of closeness with the great outdoors. Or, it might be the joy that comes from spending quality time with family and friends. Whatever the reason, we know that you have a strong drive to experience everything that comes with spending time on the road. And for more than 50 years, we've shared that passion with you. Because we're RV enthusiasts ourselves, you can see our passion in the vehicles we design and build. Own a Fleetwood, and you'll feel like you're not just traveling, but embarking on an experience unlike any other. Set your own course for adventure and get out there and explore the world around you. Once you do, you'll see what it is that drives us — it's you.



### RV OWNERCARE\*

**The Fleetwood One-Year Hitch to Bumper Warranty Coverage\***  
This comprehensive program includes systems, appliances, components and construction – with no additional costs to you.

### One-Year Full Warranty\*

Leaving the Fleetwood dealership after you've purchased your RV doesn't mean leaving Fleetwood's commitment to your satisfaction behind. This complete warranty is unique because it's just that – complete.

### Fully Transferable\*

Because we don't hesitate to stand behind our products, the complete **warranty is fully transferable** during the 12 months of warranty coverage, which is a plus for resale value.

### National Coverage

Traveling to Spokane? Buffalo? We've got you covered with one of the nation's largest trained service networks. In fact, **1,100 Fleetwood dealers** are just a phone call away.

**Require these features when you purchase your new RV...  
Fleetwood does.**



[www.fleetwoodrv.com](http://www.fleetwoodrv.com)

\*For complete info see your Fleetwood dealer. ©2005. Fleetwood Enterprises, Inc.  
Printed in the USA. Inventory control number TE06B2 10/05.

**FLEETWOOD TRAVELCADE CLUB** As a Fleetwood owner, you're eligible to become a member of our owners' group, Fleetwood Travelcade Club. It's a perfect way to meet other Fleetwood owners who love to travel across America and share in the RV lifestyle. Call (877) 577-2560 or visit [www.fleetwood.com/clubs](http://www.fleetwood.com/clubs) to learn more and join the fun!

**FLEETWOODRV.COM** To locate a dealer near you, visit our website or call 1-800-444-4905. We can also be contacted at Fleetwood Customer Relations, P.O. Box 7638, Riverside, CA 92513-7638.

**IMPORTANT—PLEASE READ** Product information, photography and illustrations included in this publication were as accurate as possible at the time of printing. For further product information and changes, please visit our website at [www.fleetwoodrv.com](http://www.fleetwoodrv.com) or contact your local Fleetwood dealer. Prices, materials, design and specifications are subject to change without notice. All weights, fuel, liquid capacities and dimensions are approximate. Fleetwood has designed its recreational vehicles to provide a variety of uses for customers. Each vehicle features optimal seating, sleeping, storage and fluid capacities. The user is responsible for selecting the proper combination of loads (i.e.: equipment, fluids, cargo, etc.) to ensure that the vehicle's capacities are not exceeded.

Your local Fleetwood dealer is:

