



Southwind

Make the rules.



SOUTHWIND-Class A Gas-2006



FEEL FREE TO ROAM ABOUT
THE COUNTRY. THERE ARE
NO RESTRICTIONS AND THE
RULES DO NOT APPLY. IT'S
YOUR TURN TO EXPLORE.
LIFE HAS ONLY JUST BEGUN, AND
YOU ARE ARRIVING IN STYLE.





Southwind 37C shown in Blue Crest interior decor with Plantation Cherry wood finish.

Just Your Style.

Southwind's sleek design will be sure to draw attention when you're out exploring the road. The exterior boasts a stylish front cap with a unique headlight design all its own, and deluxe graphic choices with optional full-body paint. Inside, take advantage of tall 84" ceilings,

always providing a spacious environment on the road. A whole coach water filtration system throughout is very convenient, giving you fresh water just like home. You'll also enjoy the new rear lounge floor plan (37L), creating a cozy bedroom suite with a reading and sitting area.



THE FUNCTIONAL DASH AREA

includes built-in cup holders for drinks, a snack tray and a slide-out desk with storage, perfect for additional items on your trip.



DASH INTEGRATED COMPUTER WORKSTATION

is the perfect fit for a laptop, including 12V, 120V and telephone outlets, creating an ideal area to email friends and family.



ENJOY THE 27" FLAT SCREEN TV

and ample storage space for the optional DVD home theater sound system.

Southwind

It's home.

Southwind readily offers the conveniences of home, so you won't have to sacrifice anything wherever your travels take you. Enjoy the ideal galley setup with elegant raised panel wood cabinetry, providing storage for full-size plates and dishes. You'll also enjoy the

8 cu. ft. Dometic® double door refrigerator with ample room for food storage and an optional convection microwave oven, which can cook a full meal in a fraction of the time compared to a standard oven. Brushed nickel finished hardware also helps to provide a high end look.



THE LARGE DINETTE

includes spacious seating for four, integrated cup holders, a large window for a great view of your surroundings and convenient pull-out drawers for storage.



THE WATER HEATER CONTROL

features a 10 gallon, quick recovery water heater with direct spark ignition. This provides quick hot water for showering or cooking (many competitors only offer 6 gallons).

A PULL-OUT CUTTING BOARD

is very useful for slicing and dicing fruits, vegetables or whatever your recipe calls for.



THE FAN-TASTIC® ROOF FAN

creates air circulation and ventilation in the galley area.

THE SYSTEMS MONITOR PANEL

features an EMS control panel and a convenient, central place to check your fresh water, holding tank and battery levels.



PULL-OUT BASKETS

make for easy loading and unloading of necessities like hand towels or cleaning supplies.





Sleep Well.

After a long day of fun, there's nothing like coming home to luxury and comfort. Southwind's luxurious Restonic® queen-sized, pillow top, innerspring mattress is sure to impress, providing the comforts of home you could have only once imagined on the road.

Southwind's five star bedroom quarters also provides functional under-the-bed storage, perfect for storing extra linens, towels or bedding. Beautiful wood panel cabinetry also helps to give this unique bedroom a breathtaking and elegant feel.

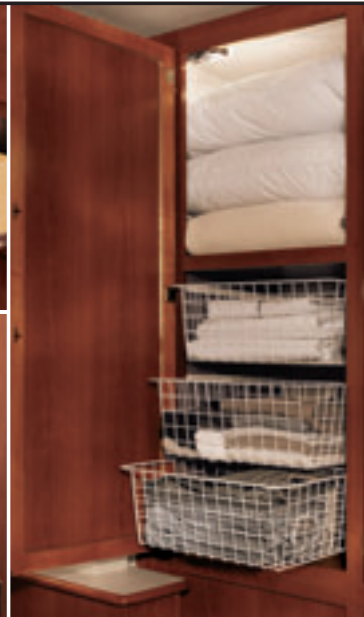


THE BEDROOM WARDROBE with mirrored doors gives you plenty of room to hang garments, storage space for shoes and shelving for folded clothing.



DELUXE FULL EXTENSION, ROLLER BEARING DRAWER GUIDES on the drawers throughout the coach, give you full access for convenient storage.

THE INTEGRATED HAMPER includes a hamper bag and is conveniently built into the wardrobe for easy access (37C only).



PULL-OUT BASKETS in the bedroom slide in and out with ease for your extra linens, towels or clothing.



A 20" FLAT SCREEN TV (standard) is a wonderful luxury, making for easy rest and relaxation.

A DESK in the bedroom, is perfect for your laptop. It also features a convenient drawer for storing supplies and shelving space.



THE LUXURIOUS BATHROOM comes equipped with a skylight in the shower, a Fan-Tastic® roof fan for ventilation, 3-bulb vanity lighting, a residential-sized sink and medicine cabinet with mirrored door and brushed nickel bath accessories.

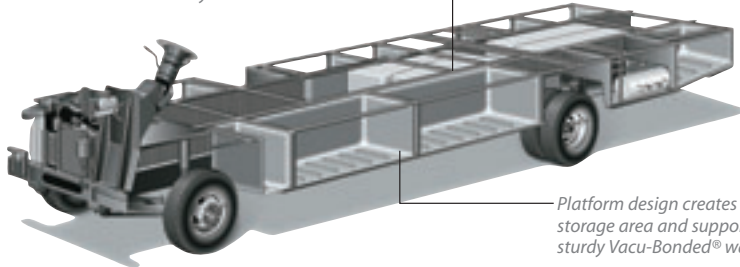
POWER PLATFORM CONSTRUCTION

Fleetwood's patented Power Platform begins with two 10-in. steel I-beams welded lengthwise to the chassis. From the beams, steel outriggers extend outward. Together, they create a basement for fluid tanks and storage while supporting the floor, walls and roof with a rigid metal frame. This complements the chassis to make it even stronger.

Holding tanks are positioned in the bottom center of the platform to enhance vehicle stability.

Holding tanks are enclosed between the upper and lower basement floors. This allows them to be heated to prevent freezing in cold weather.

Platform design creates lots of storage area and supports the sturdy Vacu-Bonded® walls.



*Drawings are for illustrative purpose only to highlight aspects of motor home construction. Actual motor home design depends on model and is subject to change.

A 2 STAGE DUPONT® PAINT PROCESS (full-paint optional) is carefully applied for maximum durability and a sleek exterior look. This process ensures only the best in quality and appearance.

TUFF-PLY ROOF is UV resistant, durable, easy to clean, and doesn't scratch like many competitors' fiberglass or aluminum roofs.

TUFF-COAT® EXTERIOR FIBERGLASS SIDEWALLS are Vacu-bonded® into a strong composite structure, as opposed to competitors' thin fiberglass laminate.

STORAGE COMPARTMENTS are lighted and include single paddle latches, gas-lift strut supports, stainless-steel hinges and insulated aluminum doors.

STYLISH FRONT CAP includes sleek rounded headlights, sure to turn heads.



THE DRIVER'S DOOR (optional) has convenient steps and an assist handle so you can enter and exit with ease.

THE DRIVER'S AREA includes tilt wheel steering, easy to read gauges, an AM/FM stereo with CD player and rear vision camera monitor.

THE UTILITY COMPARTMENT provides a central place to empty your holding tanks and includes a water sprayer for quick clean up. For your convenience the compartment is lighted and all components are clearly marked.

FUNCTIONAL EZ STORE STORAGE COMPARTMENTS allow you to store large, bulky items, and moves with the slide-out for convenient access to stored items.

THE REAR VISION CAMERA features one-way audio and a live video feed to the driver's area to aid the driver when backing up.

ILLUMINATED DRIVER'S GAUGES conveniently light up and are easy to read while you're traveling at night.

THREE EXTERIORS/INTERIORS. THE CHOICE IS YOURS.

Choose from one of three deluxe interior decor motifs with color coordinated exterior graphics. Full-body paint is optional.

SOUTHWIND EXTERIOR/INTERIOR COLOR CHOICES

STANDARD GRAPHICS



OPTIONAL FULL BODY PAINT



BLUE CREST

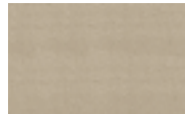
Living/Dining Room



Sofa Bed



Dinette Cushions & Throw Pillow

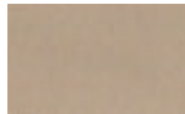


Ultraleather™ Driver/ Front Passenger Seat

Bedroom



Bedspread & Pillow Shams



Pillow Shams

TROPICS

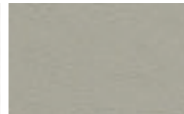
Living/Dining Room



Sofa Bed



Dinette Cushions & Throw Pillow



Ultraleather™ Driver/ Front Passenger Seat

Bedroom



Bedspread & Pillow Shams



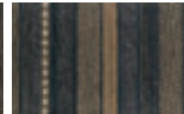
Pillow Shams

LATTE

Living/Dining Room



Sofa Bed



Dinette Cushions & Throw Pillow



Ultraleather™ Driver/ Front Passenger Seat

Bedroom



Bedspread & Pillow Shams



Pillow Shams

INTERIOR WOOD FINISHES



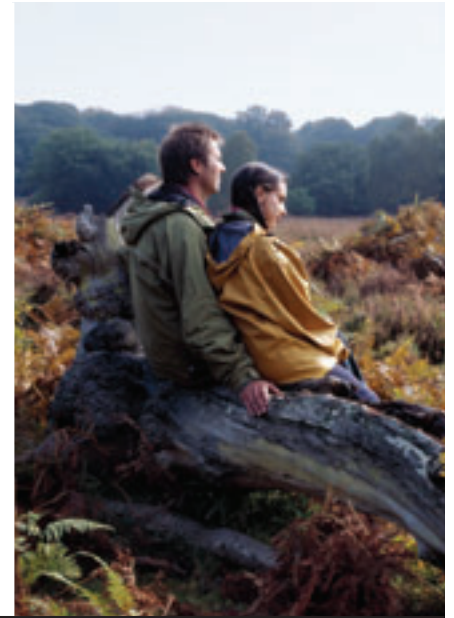
Fairfield Maple



Plantation Cherry

What Drives You?

Maybe it's feeling like you're the only one on Earth. Perhaps it's the unique sense of closeness with the great outdoors. Or, it might be the joy that comes from spending quality time with family and friends. Whatever the reason, we know that you have a strong drive to experience everything that comes with spending time on the road. And for more than 50 years, we've shared that passion with you. Because we're RV enthusiasts ourselves, you can see our passion in the vehicles we design and build. Own a Fleetwood, and you'll feel like you're not just traveling, but embarking on an experience unlike any other. Set your own course for adventure and get out there and explore the world around you. Once you do, you'll see what it is that drives us — it's you.



RV OWNERCARE* is a limited one-year/15,000-mile coach warranty and three-year/50,000-mile structural warranty, whichever occurs first, and it is fully transferable for the first 12 months. RV OWNERCARE is one of the RV industry's most comprehensive programs and includes systems, appliances, components and construction, with no deductible and no service charge. RV OWNERCARE coverage is provided from a company that will be around in the future to service your needs. See your nearest Fleetwood dealer for a full explanation of benefits and restrictions.

FLEETWOOD TRAVELCADE CLUB As a Fleetwood owner, you're eligible to become a member of our owners' group, Fleetwood Travelcade Club. It's a perfect way to meet other Fleetwood owners who love to travel across America and share in the RV lifestyle. Call (877) 577-2560 and join the fun! Or visit www.fleetwood.com/clubs to learn more.

FLEETWOODRV.COM To locate a dealer near you, visit our website or call 1-800-444-4905. We can also be contacted at Fleetwood Customer Relations, P.O. Box 7638, Riverside, CA 92513-7638.

IMPORTANT—PLEASE READ Product information, photography and illustrations included in this publication were as accurate as possible at the time of printing. For further product information and changes, please visit our website at www.fleetwoodrv.com or contact your local Fleetwood dealer. Prices, materials, design and specifications are subject to change without notice. All weights, fuel, liquid capacities and dimensions are approximate. Fleetwood has designed its recreational vehicles to provide a variety of uses for customers. Each vehicle features optimal seating, sleeping, storage and fluid capacities. The user is responsible for selecting the proper combination of loads (i.e.: occupants, equipment, fluids, cargo, etc.) to ensure that the vehicle's capacities are not exceeded.

Your local Fleetwood dealer is:



www.fleetwoodrv.com

*For complete info see your Fleetwood dealer. ©2005. Fleetwood Enterprises, Inc. Printed in the USA. Inventory control number SW06B1 5/05.

