



PIONEER and PIONEER ASV-Travel Trailers and Toy Haulers-2006

Pioneer

Hold on tight.



Pioneer



Pioneer 270FQS shown in Lake interior decor with Summer Oak wood finish.

THE LARGE TV SHELF (top left) (available on most models) is perfectly positioned for easy viewing (TV not included).

THE BUILT-IN AM/FM RADIO WITH CD PLAYER (middle left) (optional) is an ideal feature to have on those long journeys.

While most competitors build their own furniture, Fleetwood focuses on building a superior RV with only the finest name brands like Dometic®, Magic Chef® and Hydroflame. Comfortable Flexsteel® furniture with a lifetime warranty on the frame (not available on ASV models), is just one example of how Fleetwood continues to out shine the competition.

THE FUNCTIONAL PANTRY (lower left) features adjustable shelves, making it easy to store any kind of cookware or non-perishable items.

A BUILT IN MICROWAVE (top right) (optional) is perfect for cooking and whipping up a quick meal just like home.

OVERHEAD STORAGE (middle right) is conveniently designed to accommodate full-size plates and dishes.

A SPACIOUS DOMETIC® 6 CU. FT. REFRIGERATOR (lower right) is perfect for storing food and beverages.



A True Pioneer.

Pioneer blazes a trail ahead of the rest with more standard features and room than the leading competitor. Take advantage of features like deep overhead cabinets in the galley and the pots & pans drawer with full extension hardware, giving you full access to the drawer to store large cookware. You'll enjoy all the space thanks to the

45" wide dinette booth (N/A on ASV Models) with deep slide-outs, providing more freedom to enjoy the destination. Moving into the bedroom, you'll enjoy more room for storage thanks to deep closets that can accommodate full-size hangers. The competition just can't stack up to Pioneer's superior layout and functional design.



THE LARGE 7' 2" RAMP DOOR (ASV MODELS) can hold up to 2,500 lbs and features a non-skid surface for easy loading and unloading of your favorite toys.

THE EXTERIOR SHOWER (optional) is the perfect feature for conveniently rinsing off after a day of fun activities.

THE FUELING STATION (optional on ASV models) allows you to refuel your toys and even top off your tow vehicle's fuel tank with this onboard system (available with 18 and/or 30 gallon tanks).

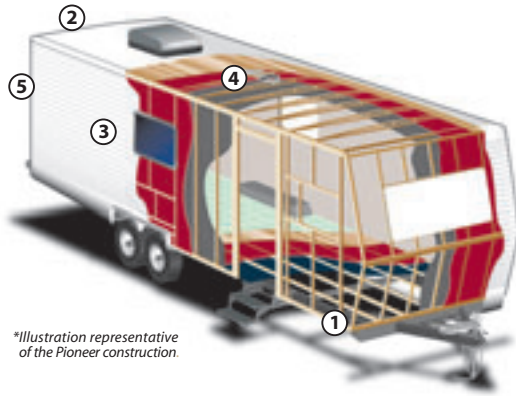
A LOW PRESSURE PROPANE CONNECTOR allows you to hook up a BBQ for great cooking while camping.

GARAGE STORAGE (optional) allows you to conveniently load/unload lots of your favorite recreational gear. Camping gear, fishing poles, we've got you covered.

At Fleetwood, we have used our 55+ years of experience to design this travel trailer with a few things in mind. Quality. Convenience. Style. Thanks to a rigorous series of engineering tests (including leak testing, cycle testing and track testing), Pioneer is proven to be a dependable ally in your adventures. And if all that wasn't enough, we went ahead and made it look great too. We dressed it up with the awesome interior decor motifs and sleek exterior stylings, giving Pioneer an appealing design that looks great while you're on the road or camping. Pioneer makes traveling easy and stands tall next to all the rest.



Toy Hauler Floor Plans



*Illustration representative of the Pioneer construction.

Setting the Standard in Travel Trailer Quality

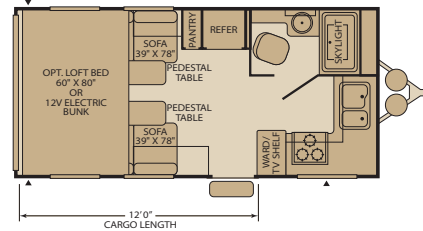
Fleetwood® prototypes are exposed to thousands of miles of durability testing. Those components that don't survive are redesigned until they do. This sets the standard in safety and durability.

- ① **Reinforced Cambered Steel Chassis** – Provides optimal strength, durability and performance.
- ② **Arctic White Seamless, One-Piece Rubber Roof** – Provides the ideal weather seal.
- ③ **.024 Aluminum Siding** – Complete with a baked-on enamel paint, this aluminum siding offers rigidity while still being affordable.
- ④ **In-Ceiling Air Conditioning Duct** – Unlike our competitors that use in-floor ducting we use in-ceiling ducting which better distributes cool air throughout the RV (N/A on ASV models).
- ⑤ **Heavy Duty Ramp Door** – Rated at 2,500 lbs. Includes non-skid ramp door surface and cam lock door hardware (ASV floor plans only).

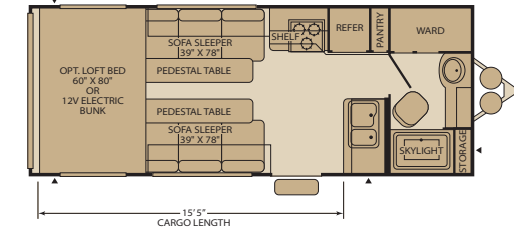
* Activity Support Vehicle

Drawings are for illustrative purposes only to highlight aspects of construction. Actual RV design depends on model and is subject to change.

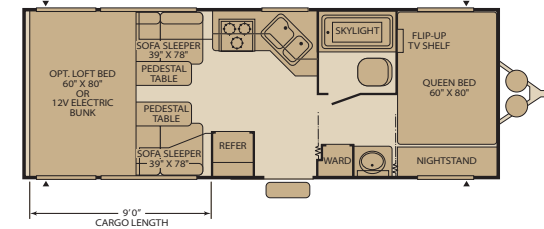
180FK Sleeps 4



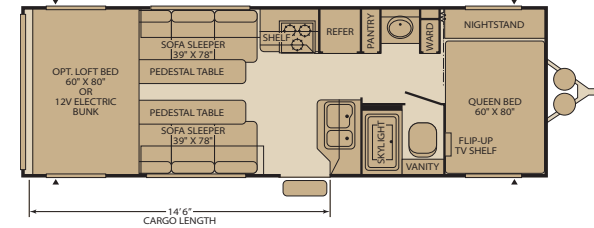
220FB Sleeps 4



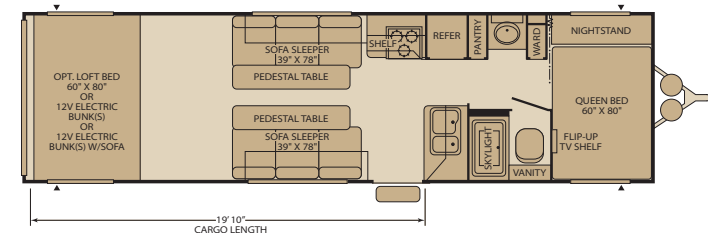
230FS Sleeps 6



260FS Sleeps 6



310FS Sleeps 6



To Our Customers...

To make sure that you get the maximum satisfaction out of your recreational vehicle purchase, there are several things you should know:

1. Learn all you can about the travel trailer or fifth wheel you're planning to buy. Don't rely on word of mouth. Get the facts about the actual trailer length, width, unloaded weight with options, Gross Vehicle Weight Rating, and cargo carrying capacity. These are usually available in the manufacturer's sales literature or from the Cargo Carrying Capacity Label located in each trailer. Be sure to check this information **before** you decide which unit to buy.
2. Verify the towing capacity of your tow vehicle. If you don't know, or aren't sure, you can ask at your automotive dealership. Be sure to match its tow rating to the loaded (not dry) weight of your trailer. Include the weight of water, additional accessories, clothing, food, and gear. To help Fleetwood travel trailer customers estimate this total weight, our Gross Vehicle Weight Ratings reflect the maximum weight of the trailer when fully loaded for camping. Be sure the weight of the tow vehicle plus the weight of your trailer do not exceed the Gross Combined Weight Rating of the tow vehicle.

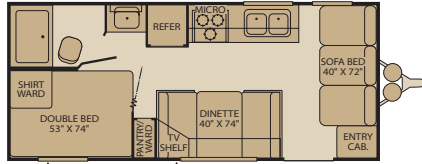
Taking these simple steps before you buy will help ensure that your trailer and tow vehicle combination is just what you wanted.

Happy Camping!

Some models are not available in all areas of the country. Please see your local dealer for model availability. Sleeping capacity based on standard layout. Optional furniture may increase or decrease sleeping capacity.

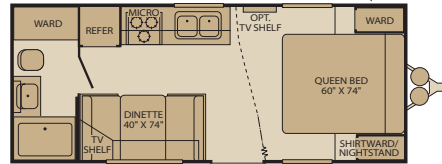
Travel Trailer Floor Plans

180CK Sleeps 6

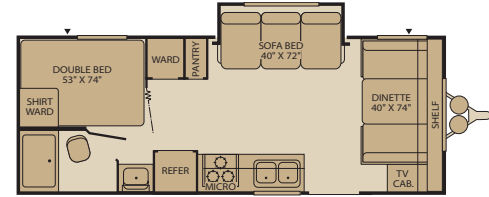


OPT. 846 DOUBLE BED W/BUNK
OPT. 871 COMBO O'HD BUNK W/PADS

190FQ Sleeps 4

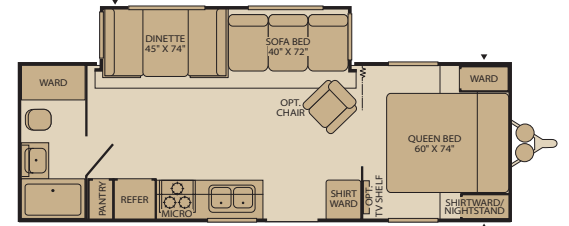


210CKS Sleeps 6, Single Slide-Out

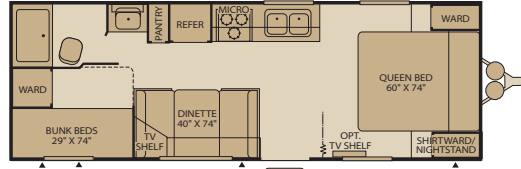


OPT. 846 DOUBLE BED W/BUNK
OPT. 871 COMBO O'HD BUNK W/PADS

270FQS Sleeps 6, Single Slide-Out

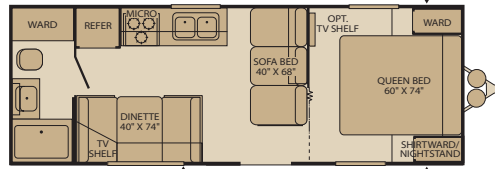


240BH Sleeps 6

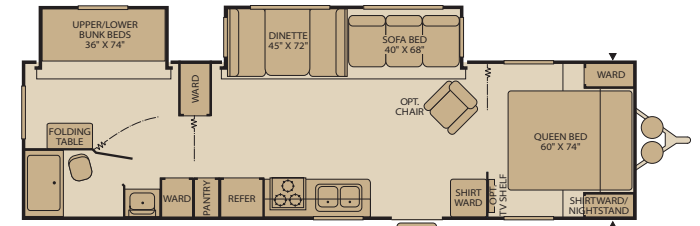


OPT. 066 GARAGE STORAGE
OPT. 846 DOUBLE BED W/BUNK
OPT. 064 GARAGE STORAGE
OPT. 871 COMBO O'HD BUNK W/PADS

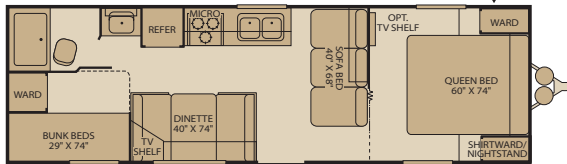
250FQ Sleeps 6



3102BDS Sleeps 8, Double Slide-Out



280BH Sleeps 8



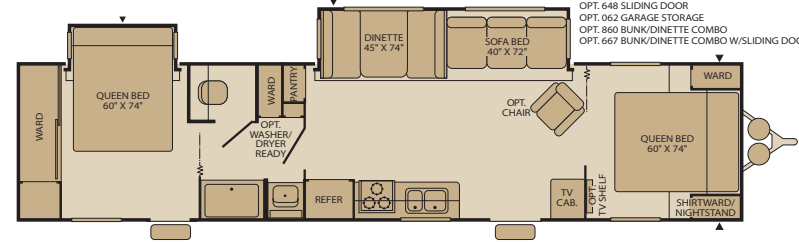
OPT. 066 GARAGE STORAGE
OPT. 846 DOUBLE BED W/BUNK
OPT. 064 GARAGE STORAGE
OPT. 871 COMBO O'HD BUNK W/PADS

300BHS Sleeps 8, Single Slide-Out



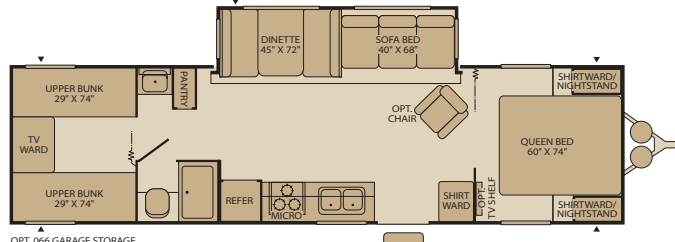
OPT. 066 GARAGE STORAGE
OPT. 846 DOUBLE BED W/BUNK
OPT. 064 GARAGE STORAGE
OPT. 871 COMBO O'HD BUNK W/PADS
OPT. 845 DOUBLE BED

3902BDS Sleeps 8, Double Slide-Out



OPT. 151 RESIDENTIAL REFER
OPT. 648 SLIDING DOOR
OPT. 062 GARAGE STORAGE
OPT. 860 BUNK/DINETTE COMBO
OPT. 667 BUNK/DINETTE COMBO W/SLIDING DOOR

320DBS Sleeps 10, Single Slide-Out



OPT. 066 GARAGE STORAGE
OPT. 062 GARAGE STORAGE

Most Popular Features [Visit www.fleetwoodrv.com](http://www.fleetwoodrv.com) for complete listing.

Interior

THROUGHOUT

- 2,500 lb. Ramp Door Rating
- 7' 2" Ramp Door Length
- Beavertail Departure Angle (Cargo Floor)
- Cam Lock Ramp Door Hardware
- Flush Floor Cargo Tie-Downs
- Hydroflame Forced Air Furnace, Direct Spark Ignition (DSI) w/Thermostat
- Non-Skid Ramp Door Surface

- Over-Sized Overhead Cabinets and Cabinet Doors
- Upgraded Vinyl Flooring

LIVING ROOM

- Built-In TV Compartment

GALLEY

- Slide-Out Counter Extension

BEDROOM

- Folding Privacy Door (230FS, 260FS & 310FS)
- Integrated Magazine Rack

- Queen Size Bed w/Under Bed Storage (230FS, 260FS & 310FS)
- TV Shelf (230FS, 260FS & 310FS)

BATHROOM

- Medicine Cabinet with Mirrored Door & 2 Adjustable Shelves

SAFETY/CONVENIENCE

- Carbon Monoxide Detector/Alarm
- Fire Extinguisher
- Propane Detector/Alarm
- Smoke Detector/Alarm

Exterior

THROUGHOUT

- Cambered Chassis
- Integrated Dual Battery Rack
- Propane Bib (Low Pressure) w/Quick Release Fitting

- Structural Steel C-Channel Main Rails

SAFETY/CONVENIENCE

- 30" Entry Door, Safety Glass Window w/Screen Door (Most Models)

STORAGE

- Luggage Doors Radius Corner (Where Applicable)

Options

THROUGHOUT

- 13,500 BTU Air Conditioner
- 4.0 kW Generator (Onan®) (N/A 180FK)
- 4.0 kW Generator (Onan®) w/Pump Station (30 Gallon Fuel Tank) (N/A 180FK)
- Cargo Divider Wall (310FS only)
- Exterior Shower
- Exterior Speakers
- Flood Lights

- Generator Ready
- Patio Awning
- Pump Station w/18 Gallon Fuel Tank
- Roof Rack
- RVQ Exterior BBQ
- Scissor Stab Jack (2 Pair)
- TV Antenna

LIVING ROOM

- Commercial Grade Carpet Kit
- Electric 12V Loft Bunk(s) w/Sofa (Most Models)
- Strut Assisted Overhead Loft w/Queen-Size Futon, Bunk Ladder & Privacy Curtain

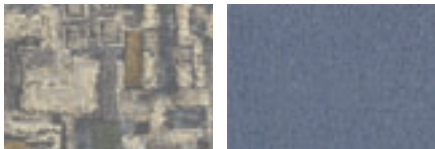
GALLEY

- 16" Magic Chef® Range w/Built-in 3-Burner, Hi-Output w/Piezo Lite
- Microwave w/Electronic Touch Pad

PIONEER INTERIOR COLOR CHOICES

LAKE

Living/Dining Room



Dinette Cushions & Sofa

Dinette Cushions & Swivel Chair (Select Models)

Bedroom*



Bedspread

Window Treatments

HEATHER

Living/Dining Room



Dinette Cushions & Sofa

Dinette Cushions & Swivel Chair (Select Models)

Bedroom*



Bedspread

Window Treatments

Most Popular Features [Visit www.fleetwoodrv.com](http://www.fleetwoodrv.com) for complete listing.

Interior

THROUGHOUT

- 6-Gallon Propane Water Heater
- Miniblinds Throughout (Except Bunk Windows)
- Wall-Mounted Systems Monitor Panel
- Wall-Switched Interior Lights

LIVING ROOM

- Built-In Magazine Rack
- Propane Bib (Low Pressure) w/Quick Release Fitting

GALLEY

- Dometic® Double Door Propane/Electric Refrigerator
- Double Bowl Stainless Steel Sink

BEDROOM

- Innerspring Mattress
- Lift-Up Bed Platform w/Below Bed Storage (Most Models)

BATHROOM

- Medicine Cabinet w/Mirrored Door & Adjustable Shelves
- Wall-Switched Ceiling Light

SAFETY/CONVENIENCE

- Carbon Monoxide Detector/Alarm
- Fire Extinguisher
- Propane Detector/Alarm
- Smoke Detector/Alarm

Exterior

THROUGHOUT

- Arctic White Gloss Exterior Metal Finish
- Propane Bib (Low Pressure) w/Quick Release Fitting

- Reinforced Screen Door w/Kick Panel
- Seamless, One-Piece Rubber Roof
- Welded, Dual Battery Rack

SAFETY/CONVENIENCE

- 30" Wide Main Entry Door w/Window (Most Models)

STORAGE

- Locking, Insulated Luggage Doors

Options

THROUGHOUT (INTERIOR)

- 13,500 BTU Air Conditioner
- 15,000 BTU Air Conditioner
- 6-Gallon Propane/120V DSI (Direct Spark Ignition) Water Heater
- Bedroom Carpet (Most Models)
- Living Room Carpet (Most Models)
- Pedestal Table
- Stereo AM/FM CD Player

GALLEY

- Microwave w/Electronic Touch Pad
- Range Cover
- Sink Lid
- Water Purifier

THROUGHOUT (EXTERIOR)

- Exterior BBQ
- Exterior Shower
- Garage Storage
- Large Lend-A-Hand Assist Handle
- Patio Awning
- Radius Corner Luggage Doors
- Spare Tire
- TV Antenna

PRALINE

Living/Dining Room



Dinette Cushions & Sofa

Dinette Cushions & Swivel Chair (Select Models)

Bedroom*



Bedspread

Window Treatments

INTERIOR WOOD FINISHES



Summer Oak

Windsor Birch

*Bedroom fabrics not available on Pioneer ASV



Pioneer ASV-Weights and Measurements

WEIGHTS	180FK	220FB	230FS	260FS	310FS
GVWR (lbs)¹	8,400	9,500	11,000	11,400	13,000
Gross Dry Weight (lbs)^{2,6}	4,586	5,370	5,617	5,957	7,240
Cargo Carrying Capacity (lbs)^{3,6}	3,814	4,130	5,383	5,443	5,760
Hitch Dry Weight (lbs)^{2,6,9}	759	873	838	1,061	1,056

DIMENSIONS AND CAPACITIES

Length (Feet & Inches)^{4,6}	22' 0"	25' 10"	27' 4"	29' 10"	34' 9"
Height (Feet & Inches)^{5,6}	11' 5"	11' 5"	11' 5"	11' 5"	11' 5"
Fresh Water Holding Tank (gal)^{6,7}	50	100	100	100	120
Grey Water Holding Tank (gal)^{6,7}	40	40	40	40	55
Black Water Holding Tank (gal)^{6,7}	40	40	40	40	40
Propane Capacity (lbs)^{6,7}	60	60	60	60	60
Tire Size (Load Range)	ST225 75R 15(C)	ST225 75R 15(D)	ST225 75R 15(D)	ST225 75R 15(D)	ST225 75R 15(D)

Pioneer-Weights and Measurements

WEIGHTS	180CK	190FQ	210CKS	240BH	250FQ	270FQS
GVWR (lbs)¹	5,900	6,100	6,400	6,400	6,400	7,900
Gross Dry Weight (lbs)^{2,6}	3,707	3,724	4,185	4,206	4,154	5,214
Cargo Carrying Capacity (lbs)^{3,6}	2,193	2,376	2,215	2,194	2,246	2,686
Hitch Dry Weight (lbs)^{2,6,9}	430	454	650	546	588	693

DIMENSIONS AND CAPACITIES

Length (Feet and Inches)^{4,6,8}	22' 2"	22' 11"	24' 7"	26' 5"	26' 0"	27' 10"
Height (Feet and Inches)^{5,6}	9' 11"	9' 11"	9' 11"	9' 11"	9' 11"	10' 1"
Fresh Water Holding Tank (gal)^{6,7}	50	50	50	50	50	50
Grey Water Holding Tank (gal)^{6,7}	40	40	40	40	40	40
Black Water Holding Tank (gal)^{6,7}	40	40	40	40	40	40
Propane Capacity (lbs)^{6,7}	60	60	60	60	60	60
Tire Size (Load Range)	ST205/ 75R 14(C)	ST205/ 75R 14(C)	ST205/ 75R 14(C)	ST205/ 75R 14(C)	ST205/ 75R 14(C)	ST205/ 75R 14(C)

WEIGHTS	280BH	300BHS	3102BDS	320DBHS	3902BDS
GVWR (lbs)¹	7,500	9,000	9,500	9,400	11,100
Gross Dry Weight (lbs)^{2,6}	4,770	5,858*	6,727	6,207	8,512*
Cargo Carrying Capacity (lbs)^{3,6}	2,730	3,142*	2,773	3,193	2,588*
Hitch Dry Weight (lbs)^{2,6,9}	718	N/A	777	857	854*

DIMENSIONS AND CAPACITIES

Length (Feet and Inches)^{4,6,8}	29' 6"	31' 10"	34' 0"	34' 0"	39' 7"
Height (Feet and Inches)^{5,6}	9' 11"	10' 2"	10' 4"	10' 2"	10' 4"
Fresh Water Holding Tank (gal)^{6,7}	50	50	50	50	50
Grey Water Holding Tank (gal)^{6,7}	40	40	40	40	40
Black Water Holding Tank (gal)^{6,7}	40	40	40	40	40
Propane Capacity (lbs)^{6,7}	60	60	60	60	60
Tire Size (Load Range)	ST205/ 75R 14(C)	ST225/ 75R 15(C)	ST225/ 75R 15(C)	ST225/ 75R 15(C)	ST225/ 75R 15(D)

1. GVWR (Gross Vehicle Weight Rating) is the maximum permissible weight of this trailer when fully loaded. It includes all weight at the trailer axle(s) and tongue or pin.

2. All dry weights are based on the standard model and do not include optional features or equipment.

3. Cargo Carrying Capacity is determined by subtracting Gross Dry Weight from GVWR. Cargo Carrying Capacity includes all fluids, optional features, equipment, and personal cargo.

4. Length taken from hitch or pin box to rear bumper (excludes accessories). Trailer length includes 3' 6" for hitch; fifth wheel includes standard pin box.

5. Add 9" if equipped with optional roof air conditioner.

6. Approximate.

7. Water weight equals 8.3 lbs. per gallon. Propane weight equals 4.2 lbs per gallon.

8. Add 10" if equipped with optional spare tire and carrier.

9. Hitch weights are dependent upon how the trailer is equipped with options, on-board cargo and tank fluid levels. Actual hitch weights may be higher or lower than shown. It is recommended that the tow vehicle and hitch for your trailer have sufficient capacity to accommodate actual usage.

Pioneer ASV Travel Trailers feature a body-width over 96" which will restrict your access to certain roads. Before purchasing, you should research any state and/or province road laws which may affect your usage.

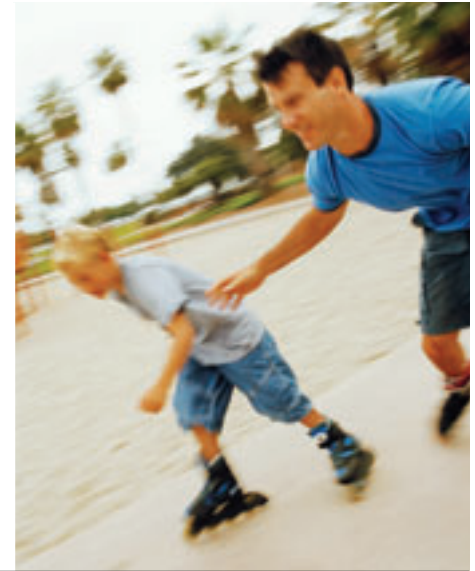
* = Estimated weights.

N/A = Not available at time of printing.

IMPORTANT—PLEASE READ: Product information, photography and illustrations included in this publication were as accurate as possible at the time of printing. For further product information and changes, please visit our website at www.fleetwoodrv.com or contact your local Fleetwood dealer. Prices, materials, design and specifications are subject to change without notice. All weights, fuel, liquid capacities and dimensions are approximate. Fleetwood has designed its recreational vehicles to provide a variety of uses for customers. Each vehicle features optimal seating, sleeping, storage and fluid capacities. The user is responsible for selecting the proper combination of loads (i.e., equipment, fluids, cargo, etc.) to ensure that the vehicle's capacities are not exceeded.

What Drives You?

Maybe it's feeling like you're the only one on Earth. Perhaps it's the unique sense of closeness with the great outdoors. Or, it might be the joy that comes from spending quality time with family and friends. Whatever the reason, we know that you have a strong drive to experience everything that comes with spending time on the road. And for more than 50 years, we've shared that passion with you. Because we're RV enthusiasts ourselves, you can see our passion in the vehicles we design and build. Own a Fleetwood, and you'll feel like you're not just traveling, but embarking on an experience unlike any other. Set your own course for adventure and get out there and explore the world around you. Once you do, you'll see what it is that drives us — it's you.



RV OWNERCARE*

The Fleetwood One-Year Hitch to Bumper Warranty Coverage*
This comprehensive program includes systems, appliances, components and construction — with no additional costs to you.

One-Year Full Warranty*

Leaving the Fleetwood dealership after you've purchased your RV doesn't mean leaving Fleetwood's commitment to your satisfaction behind. This complete warranty is unique because it's just that — complete.

Fully Transferable*

Because we don't hesitate to stand behind our products, the complete **warranty is fully transferable** during the 12 months of warranty coverage, which is a plus for resale value.

National Coverage

Traveling to Spokane? Buffalo? We've got you covered with one of the nation's largest trained service networks. In fact, **1,100 Fleetwood dealers** are just a phone call away.

**Require these features when you purchase your new RV...
Fleetwood does.**

FLEETWOOD TRAVELCADE CLUB As a Fleetwood owner, you're eligible to become a member of our owners' group, Fleetwood Travelcade Club. It's a perfect way to meet other Fleetwood owners who love to travel across America and share in the RV lifestyle. Call (877) 577-2560 or visit www.fleetwood.com/clubs to learn more and join the fun!

FLEETWOODRV.COM To locate a dealer near you, visit our website or call 1-800-444-4905. We can also be contacted at Fleetwood Customer Relations, P.O. Box 7638, Riverside, CA 92513-7638.

IMPORTANT—PLEASE READ Product information, photography and illustrations included in this publication were as accurate as possible at the time of printing. For further product information and changes, please visit our website at www.fleetwoodrv.com or contact your local Fleetwood dealer. Prices, materials, design and specifications are subject to change without notice. All weights, fuel, liquid capacities and dimensions are approximate. Fleetwood has designed its recreational vehicles to provide a variety of uses for customers. Each vehicle features optimal seating, sleeping, storage and fluid capacities. The user is responsible for selecting the proper combination of loads (i.e.: equipment, fluids, cargo, etc.) to ensure that the vehicle's capacities are not exceeded.

Your local Fleetwood dealer is:



www.fleetwoodrv.com

*For complete info see your Fleetwood dealer. ©2005. Fleetwood Enterprises, Inc.
Printed in the USA. Inventory control number PI06B2 10/05.

tread lightly!
LEAVING A GOOD IMPRESSION

