

 **FLEETWOOD**
Driven to Explore

Fiesta

Hit the road.



FIESTA -Class A Gas-2006



PACK YOUR RV AND
OPEN YOUR MIND. THE ADVENTURE
OF YOUR LIFE IS ABOUT
TO BEGIN. TRAVEL SMART AND
LEAVE NOTHING BEHIND.
THE DESTINATION AWAITS YOU
AND YOU'LL BE READY.



Room to stretch.

Fiesta provides plenty of room to enjoy your adventure thanks to its well designed floor plan layouts, maximizing space on the road. Fiesta boasts spacious features, like the large dinette that comfortably seats four and a large dinette window for a great view of

your surroundings. And it's always easy to relax, thanks to Flexsteel® furniture with a lifetime warranty on the frame. In the kitchen, take advantage of full extension drawer guides, giving you full access to every drawer for your storage needs.



THE 8 CU. FT. DOMETIC® REFRIGERATOR AND PANTRY provide great room to store your perishable and non-perishable items.



THE LARGE DOUBLE SINK features a single lever faucet making for quick and easy clean up. Sink lids provide additional countertop space.

THE POTS & PANS DRAWER is specifically designed to store your large cookware.



FIESTA'S GALLEY makes the best use of space so preparing a meal on the go is always convenient. Take advantage of the functional, folding countertop extension providing additional surface area in an instant. You'll also enjoy the integrated spice rack, durable wood drawer construction, chrome finished hardware, 3-burner cook top and optional convection microwave.



Fiesta 29J shown in Palomino interior decor with Winsor Birch wood finish.



Spacious Quarters.

Fiesta's smart and spacious floor plan layout continues into the bedroom, maximizing space, while giving you plenty of room to relax. For your comfort, Fiesta's bedroom features an innerspring queen size mattress, making it

easy to catch some Z's after a long day of fun. You'll also enjoy the optional day/night pleated shades, allowing you to block out the light for those afternoon naps, or let it in while reading a book.



INTEGRATED TOWEL RACKS on the bathroom door are very convenient for hanging towels to dry.



THE SHOWER WITH SKYLIGHT features a retractable hand held shower head with water saver to conserve water while dry camping and integrated shelves are provided for storing soap and shampoo.



FIESTA'S BATHROOM features a residential sized medicine cabinet and sink, drawer storage for toiletries, integrated towel racks for your convenience, 3 bulb vanity light for abundant lighting, a marine toilet with tissue holder and a power bath vent for fresh air ventilation.



OVER-THE-BED STORAGE adds elegance and gives you ample room to store additional bedding or towels.

THE BEDROOM TV SHELF provides park cable, 12V & 120V outlets (TV not included).



THE BEDROOM WARDROBE accommodates full-size hangers and features plenty of space to hang garments and ample room for shoe storage.

THE ROOF LADDER makes it easy to access the roof for cleaning or maintenance.

TUFF-COAT® EXTERIOR FIBERGLASS SIDEWALLS are a seamless, one piece fiberglass composite that resists UV rays, cracks and impacts.

OUR TUFF-PLY ROOF is UV resistant, durable, easy to clean and doesn't scratch like many competitors' fiberglass or aluminum roofs.

THE REAR FUEL FILL is easy to fill up no matter what side of the pump you're on (most models).

EXTERIOR AWNING is standard and provides great protection from the weather, so you can enjoy your surroundings rain or shine.

5,000 LB. TOWING CAPACITY* allows you to tow a variety of toys.

*The chassis manufacturer recommends the installation of a supplemental brake control system to activate the brakes on the vehicle or trailer you are towing.

ONAN® 4.0KW MICRO QUIET GENERATOR minimizes campground noise and runs very quietly compared to other generators.

REDESIGNED FRONT CAP is all new, adding to Fiesta's curb appeal and style.

Vehicle shown in Palomino exterior graphics.



THE DRIVER'S AREA features tilt wheel steering, easy to read gauges, an AM/FM radio with CD player (Sirius® satellite radio ready), double swivel sun visors with map pockets and driver/passenger captain's chairs with reclining back and side controls.

THE ENTERTAINMENT CENTER is redesigned for '06, featuring an amazing 20" flat screen TV that is mounted in the front overhead instead of below in the dash. This makes for improved TV viewing and a spacious driver's area.

THE 4-POINT AUTOMATIC LEVELING SYSTEM levels the entire motor home if you are camped or parked on an uneven surface (optional on select models).

THE SYSTEM MONITOR PANEL provides a central place to conveniently check all of your holding tank levels.

PASS-THROUGH STORAGE is an excellent feature that allows you to conveniently store oversized items (available on select models).

THREE EXTERIORS. THREE INTERIORS. THE CHOICE IS YOURS.

For '06, choose from three standard exterior graphic packages and color coordinated interior fabric motifs.

FIESTA EXTERIOR/INTERIOR COLOR CHOICES



OLDE NAVY
Living/Dining Room

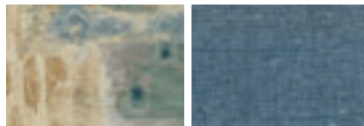


Sofa Bed & Dinette Cushions

Swivel Chair & Throw Pillow

Driver/Front Passenger Bucket Seats

Bedroom



Bedsread

Pillow Shams



SAGE
Living/Dining Room

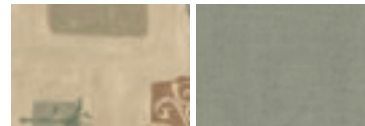


Sofa Bed & Dinette Cushions

Swivel Chair & Throw Pillow

Driver/Front Passenger Bucket Seats

Bedroom



Bedsread

Pillow Shams



PALOMINO
Living/Dining Room



Sofa Bed & Dinette Cushions

Swivel Chair & Throw Pillow

Driver/Front Passenger Bucket Seats

Bedroom



Bedsread

Pillow Shams

INTERIOR WOOD FINISH



Windsor Birch

What Drives You?

Maybe it's feeling like you're the only one on Earth. Perhaps it's the unique sense of closeness with the great outdoors. Or, it might be the joy that comes from spending quality time with family and friends. Whatever the reason, we know that you have a strong drive to experience everything that comes with spending time on the road. And for more than 50 years, we've shared that passion with you. Because we're RV enthusiasts ourselves, you can see our passion in the vehicles we design and build. Own a Fleetwood, and you'll feel like you're not just traveling, but embarking on an experience unlike any other. Set your own course for adventure and get out there and explore the world around you. Once you do, you'll see what it is that drives us — it's you.



RV OWNERCARE* is a limited one-year/15,000-mile coach warranty and three-year/50,000-mile structural warranty, whichever occurs first, and it is fully transferable for the first 12 months. RV OWNERCARE is one of the RV industry's most comprehensive programs and includes systems, appliances, components and construction, with no deductible and no service charge. RV OWNERCARE coverage is provided from a company that will be around in the future to service your needs. See your nearest Fleetwood dealer for a full explanation of benefits and restrictions.

FLEETWOOD TRAVELCADE CLUB As a Fleetwood owner, you're eligible to become a member of our owners' group, Fleetwood Travelcade Club. It's a perfect way to meet other Fleetwood owners who love to travel across America and share in the RV lifestyle. Call (877) 577-2560 or visit www.fleetwood.com/clubs to learn more and join the fun!

FLEETWOODRV.COM To locate a dealer near you, visit our website or call 1-800-444-4905. We can also be contacted at Fleetwood Customer Relations, P.O. Box 7638, Riverside, CA 92513-7638.

IMPORTANT—PLEASE READ Product information, photography and illustrations included in this publication were as accurate as possible at the time of printing. For further product information and changes, please visit our website at www.fleetwoodrv.com or contact your local Fleetwood dealer. Prices, materials, design and specifications are subject to change without notice. All weights, fuel, liquid capacities and dimensions are approximate. Fleetwood has designed its recreational vehicles to provide a variety of uses for customers. Each vehicle features optimal seating, sleeping, storage and fluid capacities. The user is responsible for selecting the proper combination of loads (i.e.: occupants, equipment, fluids, cargo, etc.) to ensure that the vehicle's capacities are not exceeded.

Your local Fleetwood dealer is:



www.fleetwoodrv.com

*For complete info see your Fleetwood dealer. © 2005. Fleetwood Enterprises, Inc. Printed in the USA. Inventory control number FI06B1 7/05.

