



# Expedition

Exceed expectation.



EXPEDITION-Class A Diesel-2006



CHALLENGE YOURSELF LIKE  
NEVER BEFORE. BE ADVENTUROUS AT  
HEART AND NEVER STOP  
DREAMING. FLY DOWN THE ROAD WITH  
EXPECTATION AND CURIOSITY.  
THIS IS YOUR TIME TO GROW NEW WINGS  
AND PULL UP OLD ROOTS.





*Expedition 34H shown with South Seas interior decor and Plantation Cherry wood finish.*



## New and Improved.

You'll always feel at home in the totally redesigned '06 Expedition. Marvel at the stylish redesigned front/rear caps with beautiful full-body paint option, featuring sleek exterior graphics. You'll appreciate the interior, boasting

tall 84" ceilings for a spacious open atmosphere, and redesigned larger windows allowing more natural light in. You'll also enjoy the luxury of dual air conditioning units for the utmost in comfortable travel.



**THE ULTRALEATHER™ SOFA** (optional) is luxurious, comfortable, and has an optional air mattress, providing added sleeping accommodations.

**THE ULTRALEATHER™ FLEXSTEEL® PASSENGER SEAT** is stain resistant and includes an electric foot rest, allowing you to automatically adjust. Power adjustments also help to customize the seat position/height for a luxurious traveling experience (both power & electric foot rest are optional).

**OVERHEAD STORAGE COMPARTMENTS** are spacious, providing an ideal place for storing books, games or anything else for your travels.

**THE FRONT ENTERTAINMENT CENTER** includes a 27" flat screen TV, beautiful redesigned cabinetry and a DVD/VCR combo with an optional home theater sound system.

## Expedition

### At Home.

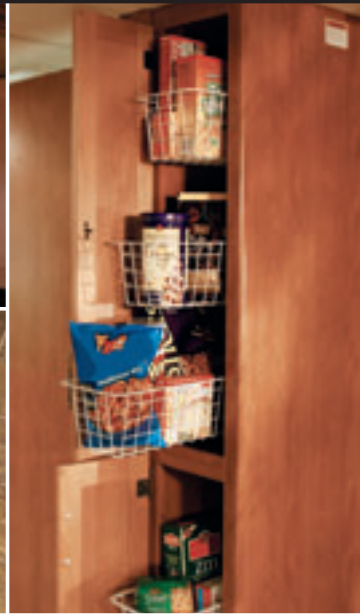
You'll feel like you never left home in Expedition's well equipped galley. Fix anything on the menu with the 22" 3-burner cook top and the large high powered convection microwave oven (1.4 cu. ft.), which cooks like a conventional oven but

in half the time. You'll also enjoy the roll-out countertop extension for added countertop space (available on select models), which conveniently locks in place during transit. It's like having your home kitchen with you wherever you go.



**OVERHEAD STORAGE IN THE GALLEY** features adjustable shelving and are deep enough to accommodate full-size plates. The shelves are lined to prevent scratching the cabinets.

**DELUXE ROLLER BEARING, FULL EXTENSION DRAWER GUIDES** on the drawers throughout the coach, give you full access for convenient storage.



**GALLEY PANTRY** lets you organize your food thanks to the convenience of its slide-out storage baskets.



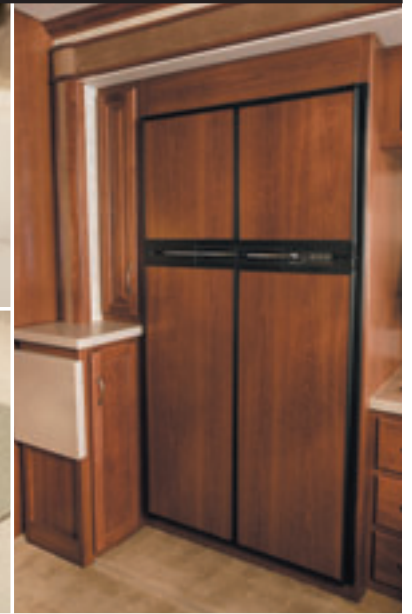
**SOLID SURFACE NON-POROUS COUNTERTOPS** look great, are easy to clean and are stain resistant.

**UNDER SINK STORAGE** provides space for storing the sink and range lid covers, a pull-out basket and a wastebasket, giving you plenty of room for your cleaning supplies.



**THE GALLEY SINK** features an elegant stainless steel single lever faucet and a convenient soap dispenser for quick and easy clean up.

**CONVENIENT SINK LIDS** gives you more countertop space, making it easier to prepare meals.



**NORCOLD® 12 CU. FT. 4 DOOR REFRIGERATOR** features a built-in icemaker for cold beverages, and plenty of room for storing food.







## Sleep Well.

Sleep will always come easy in Expedition's plush and luxurious bedroom quarters. The queen-size bed with Restonic® innerspring mattress is more than comfortable, while the spacious slide-out, helps to open the entire bedroom area up. For '06, enjoy the

redesigned interior decor with elegant bedspread detailing and color coordinated pillow shams. In the bathroom, you'll always have the luxury of whole coach water filtration, providing fresh filtered water for brushing your teeth.



### A CONNECTING BATHROOM

features solid surface countertops, a deep sink, mirrored residential medicine cabinet with make-up lights, brushed nickel accessories, a Fan-Tastic® roof fan with a convenient wall switch for ventilation and a glass-enclosed shower with skylight.



### BEDROOM DRESSER

(select models) offers the convenience of organizational baskets and a clothes hamper. Underneath, toe kicks make it easy to access without awkward bending or leaning over.



### A MİRRORED-DOOR WARDROBE

comes equipped with lighting, residential racks, wide organizers and is lined with cedar to keep clothes smelling fresh and moth-free.



### 20" FLAT SCREEN TV

(standard) is positioned in the upper corner of the room and swivels for easy bedtime viewing.



### THE REMOTE GENERATOR SWITCH

in the bedroom, allows you to easily shut the power on or off at anytime.

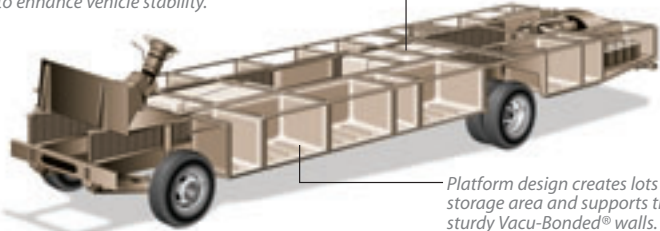
### THE WASHER/DRYER COMBO

(optional) is a great convenience that is easily concealed when not in use, making it easy to do a load of laundry.

## Expedition

Holding tanks are positioned in the bottom center of the platform to enhance vehicle stability.

Holding tanks are enclosed between the upper and lower basement floors. This allows them to be heated to prevent freezing in cold weather.



Platform design creates lots of storage area and supports the sturdy Vacu-Bonded® walls.

### POWER PLATFORM CONSTRUCTION

Fleetwood's patented Power Platform begins with two 10-in. steel I-beams welded lengthwise to the chassis. From the beams, steel outriggers extend outward. Together, they create a basement for fluid tanks and storage while supporting the floor, walls and roof with a rigid metal frame. This complements the chassis to make it even stronger.

\* Drawings are for illustrative purpose only to highlight aspects of motor home construction. Actual motor home design depends on model and is subject to change.

### AWNINGS

Patio and entry door awnings (electric optional) provide shade from the sun.

### DUAL AIR CONDITIONING UNITS

Expedition has maximum cooling capabilities and plenty of storage because its A/C units are mounted on the roof and not in the basement.

### A 2 STAGE DUPONT® PAINT PROCESS

(full-paint optional) is carefully applied for maximum durability and a sleek exterior look. This process ensures only the best in quality and appearance.



### ELECTRIC LEVELING SYSTEM

An automatic 4-point electric leveling system levels your Expedition with a one-button push or a do-it-yourself manual override.

### A REDESIGNED FIBERGLASS FRONT CAP

gives Expedition a beautiful and stylish fresh look on the road, sure to turn heads.

Vehicle shown in South Seas optional full-body paint.



### EZ STORE COMPARTMENTS

are illuminated and have gas-lift strut supports, stainless-steel hinges, insulated aluminum doors and move with slide-out for convenient use. For '06 a wider door was added to allow for storage of larger items.

### A PULL-OUT STORAGE BASKET

makes for easy loading and unloading, while keeping small items together (select models).

### THE UTILITY COMPARTMENT

provides a central place to empty your holding tanks and includes a water sprayer for quick clean up. For your convenience the compartment is lighted and all components are clearly marked.

### REMOTE KEYLESS ENTRY

makes locking and unlocking your RV as simple as the push of a button.

### THE REDESIGNED DASH

features improved ergonomics, passenger storage, read-at-a-glance gauges and easy-to-reach controls. Power sun visors and 6-Disc CD player with Sirius® satellite radio are optional (6 month subscription is included).

### A REDESIGNED FIBERGLASS REAR CAP

incorporates stylish round taillights for a unique and stylish look on the road.

## FOUR EXTERIORS, TWO INTERIORS. THE CHOICE IS YOURS.

Choose from two standard exterior graphic packages or optional full-body paint, and two color coordinated stylish interior decor motifs with two elegant choices of wood finish.

### EXPEDITION EXTERIOR/INTERIOR COLOR CHOICES



Standard



Optional Full-Body Paint



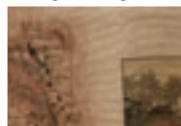
Standard



Optional Full-Body Paint

#### SOUTH SEAS

##### Living/Dining Room



Sofa Bed & Dinette Cushions



Swivel Chair & Throw Pillows



Ultraleather™ Driver & Front Passenger Seats

##### Bedroom



Bedspread



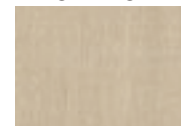
Pillow Shams



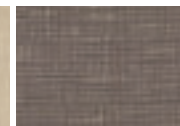
Throw Pillow

#### SILVER LEAF

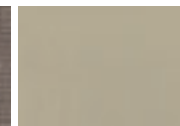
##### Living/Dining Room



Sofa Bed



Dinette Cushions & Swivel Chair



Ultraleather™ Driver & Front Passenger Seats

##### Bedroom



Bedspread & Throw Pillow



Pillow Shams

### INTERIOR WOOD FINISHES



Windsor Birch



Plantation Cherry

## What Drives You?

Maybe it's feeling like you're the only one on Earth. Perhaps it's the unique sense of closeness with the great outdoors. Or, it might be the joy that comes from spending quality time with family and friends. Whatever the reason, we know that you have a strong drive to experience everything that comes with spending time on the road. And for more than 50 years, we've shared that passion with you. Because we're RV enthusiasts ourselves, you can see our passion in the vehicles we design and build. Own a Fleetwood, and you'll feel like you're not just traveling, but embarking on an experience unlike any other. Set your own course for adventure and get out there and explore the world around you. Once you do, you'll see what it is that drives us — it's you.



**RV OWNERCARE\*** is a limited one-year/15,000-mile coach warranty and three-year/50,000-mile structural warranty, whichever occurs first, and it is fully transferable for the first 12 months. RV OWNERCARE is one of the RV industry's most comprehensive programs and includes systems, appliances, components and construction, with no deductible and no service charge. RV OWNERCARE coverage is provided from a company that will be around in the future to service your needs. See your nearest Fleetwood dealer for a full explanation of benefits and restrictions.

**FLEETWOOD TRAVELCADE CLUB** As a Fleetwood owner, you're eligible to become a member of our owners' group, Fleetwood Travelcade Club. It's a perfect way to meet other Fleetwood owners who love to travel across America and share in the RV lifestyle. Call (877) 577-2560 and join the fun! Or visit [www.fleetwood.com/clubs](http://www.fleetwood.com/clubs) to learn more.

**FLEETWOODRV.COM** To locate a dealer near you, visit our website or call 1-800-444-4905. We can also be contacted at Fleetwood Customer Relations, P.O. Box 7638, Riverside, CA 92513-7638.

**IMPORTANT—PLEASE READ** Product information, photography and illustrations included in this publication were as accurate as possible at the time of printing. For further product information and changes, please visit our website at [www.fleetwoodrv.com](http://www.fleetwoodrv.com) or contact your local Fleetwood dealer. Prices, materials, design and specifications are subject to change without notice. All weights, fuel, liquid capacities and dimensions are approximate. Fleetwood has designed its recreational vehicles to provide a variety of uses for customers. Each vehicle features optimal seating, sleeping, storage and fluid capacities. The user is responsible for selecting the proper combination of loads (i.e.: occupants, equipment, fluids, cargo, etc.) to ensure that the vehicle's capacities are not exceeded.

Your local Fleetwood dealer is:



[www.fleetwoodrv.com](http://www.fleetwoodrv.com)

\*For complete info see your Fleetwood dealer. ©2005, Fleetwood Enterprises, Inc.  
Printed in the USA. Inventory control number EXP06B1 5/05.

