

FLEETWOOD
Driven to Explore

Pioneer Floor Plans, Standard Features and Options

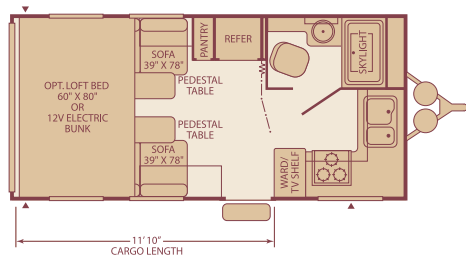
{Pioneer}

PIONEER Toy Haulers and Travel Trailers 2005

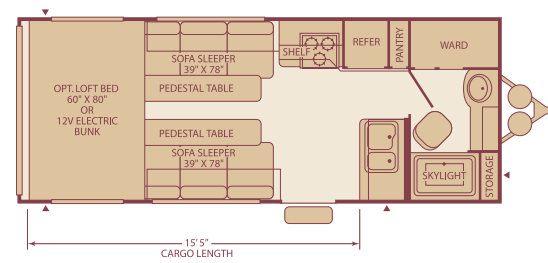


Toy Hauler Floor Plans

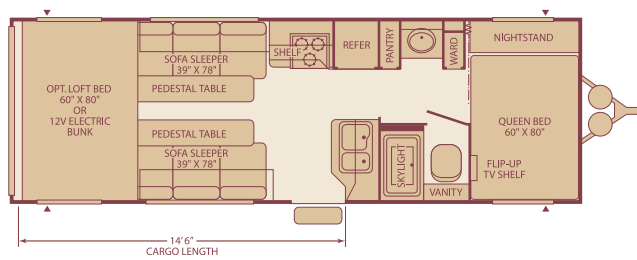
180FK
Sleeps 4



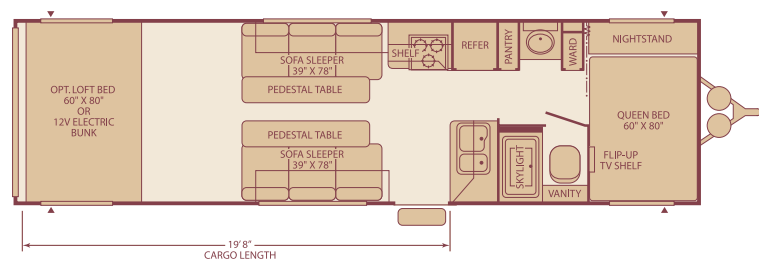
220FB
Sleeps 4



260FS
Sleeps 6



310FS
Sleeps 6



Some models are not available in all areas of the country. Please see your local dealer for model availability.

Sleeping capacity based on standard layout. Optional furniture may increase or decrease sleeping capacity.

Exterior Storage = ▲

Standard Features

Interior

THROUGHOUT

- Hydroflame Forced Air Furnace, Direct Spark Ignition (DSI) w/Thermostat*
- Flush Floor Cargo Tie-Downs*
- Upgraded Vinyl Flooring*
- Over-Sized Overhead Cabinets and Cabinet Doors*
- 7'2" Ramp Door Length*
- Cam Lock Ramp Door Hardware*
- 2,500 lb. Ramp Door Rating*
- Non-Skid Ramp Door Surface*
- Beavertail Departure Angle (Cargo Floor)*
- 6-Gallon LP Gas Water Heater
- Water Heater Bypass
- Full Systems Monitor Panel
- AM/FM/CD Stereo
- Protective Stop Bumpers
- Fire Extinguisher
- LPG Detector/Alarm
- Smoke Detector/Alarm

LIVING ROOM

- Built-In TV Compartment*
- Cable TV Hook-up
- Facing Fold-Away Sofa Sleeper

GALLEY

- Slide-Out Counter Extension*
- 6 cu. ft. Dometic® Double Door Refrigerator
- Magic Chef® 3-Burner Cook Top, Hi-Output and Piezo Lite
- 60/40 Sink
- Range Hood with 12V Light and Exhaust Fan
- Built-In Spice Shelf

BEDROOM

- Queen Size Bed w/Under Bed Storage (260FS & 310FS)*
- TV Shelf (260FS & 310FS)*
- Folding Privacy Door (260FS & 310FS)*
- Integrated Magazine Rack*
- Mini Blinds

BATHROOM

- Medicine Cabinet with Mirrored Door & 2 Adjustable Shelves*
- Toilet Paper Holder
- Towel Ring
- Towel Bars (2)
- ABS Tub/Shower Walls
- Skylight
- Lever Bath Door Handle
- Power Exhaust Roof Vent

Decor Choices

- Lake (Blue)
- Heather (Rose)
- Praline (Brown)

Weights and Measurements

WEIGHTS	180FK	220FB	260FS	310FS
GVWR (lbs.)¹	8,400	9,500	11,400	13,000
Gross Dry Weight (lbs.)^{2,6}	4,586	5,370	5,957	7,240
Maximum Carrying Capacity (lbs.)^{3,6}	3,814	4,130	5,443	5,760
Hitch Dry Weight (lbs.)^{2,6,8}	759	873	1,061	1,056
DIMENSIONS AND CAPACITIES				
Length (Feet & Inches)^{4,6}	22' 0"	25' 10"	29' 10"	34' 9"
Height (Feet & Inches)^{5,6}	11' 5"	11' 5"	11' 5"	11' 5"
Fresh Water Holding Tank (gal.)^{6,7}	50	100	100	120
Grey Water Holding Tank (gal.)^{6,7}	40	40	40	55
Black Water Holding Tank (gal.)^{6,7}	40	40	40	40
LP Gas Capacity (lbs.)^{6,7}	60	60	60	60
Tire Size (Load Range)	ST225 75R 15(C)	ST225 75R 15(D)	ST225 75R 15(D)	ST225 75R 15(D)

IMPORTANT—PLEASE READ: Product information, photography and illustrations included in this publication were as accurate as possible at the time of printing. For further product information and changes, please visit our website at www.fleetwoodrv.com or contact your local Fleetwood dealer. Prices, materials, design and specifications are subject to change without notice. All weights, fuel, liquid capacities

Exterior

THROUGHOUT

- Structural Steel C-Channel Main Rails*
- Cambered Chassis*
- Integrated Dual Battery Rack*
- LP Bib Quick Disconnect (Low Pressure)*
- EZ-Lube Axles
- Chrome Wheels
- Entry Step
- Diamond Plate Gravel Guard
- Safety Glass Windows
- Quick Drain Knife Valve (Fresh Water Tank)
- Dual 7 Gallon (30 lb.) LP Gas Tanks
- Exterior Ladder
- LP Gas Tank Cover
- Pet/Security Attachments (2)
- Rubber Roof
- Fiberglass Insulation
- 120V Patio Receptacle
- Amber Patio Light

SAFETY/CONVENIENCE

- 30" Entry Door, Safety Glass Window w/Screen Door (Most Models)*
- 120V GFI Circuit Protection (Galley/Bath/Patio)

STORAGE

- Luggage Doors Radius Corner (Where Applicable)*
- Power Cord Storage
- Sewer Hose Storage

Options

THROUGHOUT

- Roof Rack
- Pump Station w/18 Gallon Fuel Tank
- 13,500 BTU Air Conditioner
- Awning
- 4.0 kW Generator (Onan®) w/Pump Station (30 Gallon Fuel Tank) (N/A 180FK)
- 4.0 kW Generator (Onan®) (N/A 180FK)
- Generator Ready
- Cargo Divider Wall (310FS only)
- Carbon Monoxide Detector (Standard Feature as of 01/01/05)
- Scissor Stab Jack (2 Pair)
- Exterior Shower
- RVQ Exterior BBQ
- TV Antenna
- Exterior Washer w/Pressurized Nozzle
- Exterior Speakers
- Flood Lights

LIVING ROOM

- Commercial Grade Carpet Kit
- Strut Assisted Overhead Loft w/Queen-Size Futon, Bunk Ladder & Privacy Curtain
- Electric 12V Loft Bunk

GALLEY

- Microwave Oven
- 16" Magic Chef® Range w/Built-in 3-Burner, Hi-Output w/Piezo Lite

* Denotes Fleetwood's Key Features

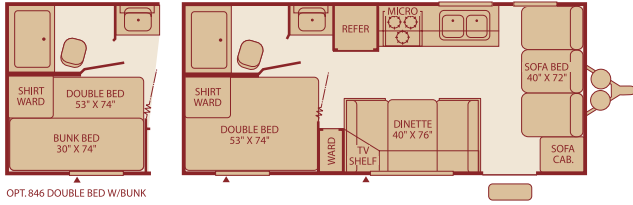
- GVWR (Gross Vehicle Weight Rating) is the maximum permissible weight of this trailer when fully loaded. It includes all weight at the trailer axle(s) and tongue or pin.
- All dry weights are based on the standard model and do not include optional features or equipment.
- Maximum Carrying Capacity is determined by subtracting Gross Dry Weight from GVWR. Maximum Carrying Capacity includes all fluids, optional features, equipment, and personal cargo.
- Trailer length includes 3' 6" for hitch; fifth wheel includes standard pin box.
- Add 9" if equipped with optional roof air conditioner.
- Approximate.
- Water weight equals 8.3 lbs per gallon. LP Gas weight equals 4.2 lbs per gallon.
- Hitch weights are dependent upon how the trailer is equipped with options, on-board cargo and tank fluid levels. Actual hitch weights may be higher or lower than shown. It is recommended that the tow vehicle and hitch for your trailer have sufficient capacity to accommodate actual usage.

and dimensions are approximate. Fleetwood has designed its recreational vehicles to provide a variety of uses for customers. Each vehicle features optimal seating, sleeping, storage and fluid capacities. The user is responsible for selecting the proper combination of loads (i.e., occupants, equipment, fluids, cargo, etc.) to ensure that the vehicle's capacities are not exceeded.

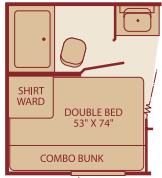
Pioneer

Travel Trailer Floor Plans

180CK
Sleeps 6

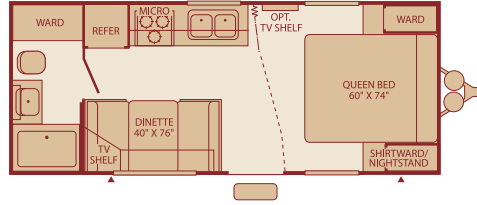


OPT.846 DOUBLE BED W/BUNK

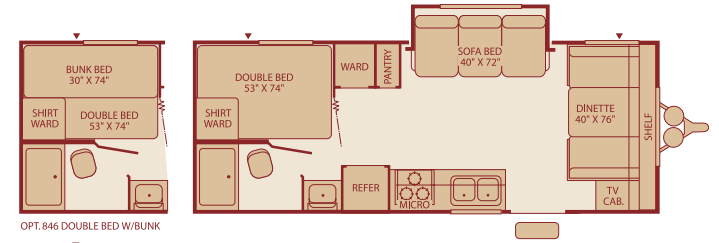


OPT.871 COMBO O'HD BUNK W/PADS

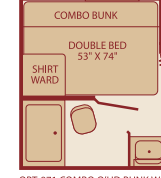
190FQ
Sleeps 4



210CKS
Single Slide-Out
Sleeps 6

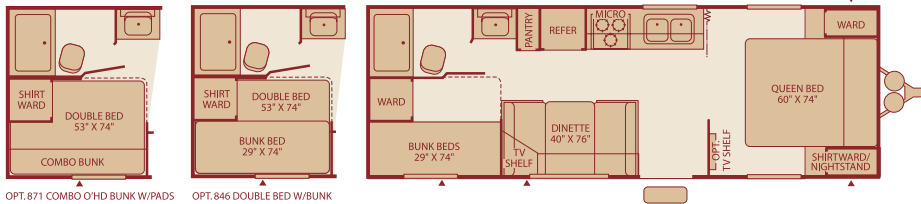


OPT.846 DOUBLE BED W/BUNK



OPT.871 COMBO O'HD BUNK W/PADS

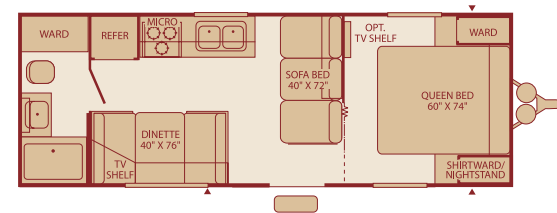
240BH
Sleeps 6



OPT.871 COMBO O'HD BUNK W/PADS

OPT.846 DOUBLE BED W/BUNK

250FQ
Sleeps 6

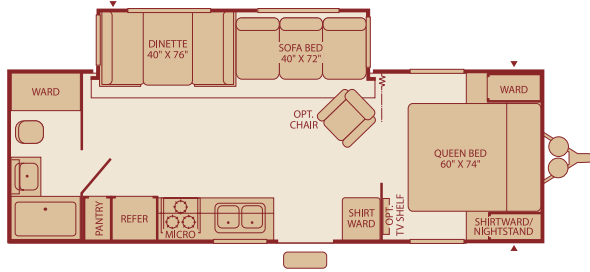


Some models are not available in all areas of the country.
Please see your local dealer for model availability.

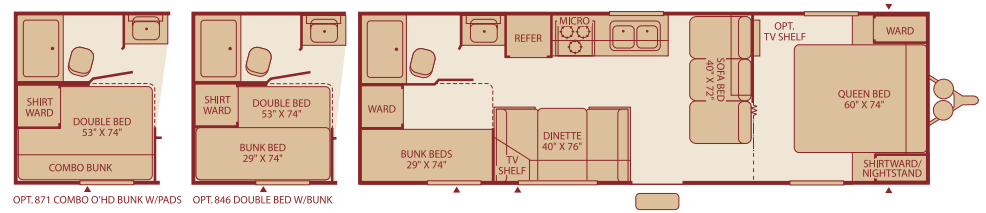
Pioneer

Travel Trailer Floor Plans

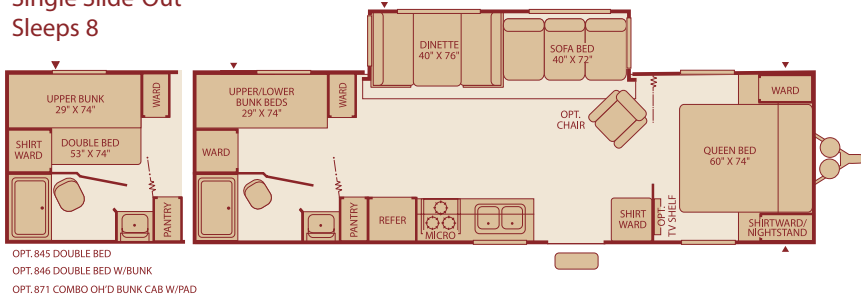
270FQS
Single Slide-Out
Sleeps 6



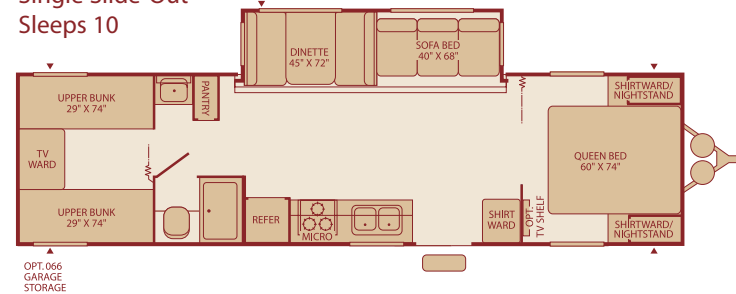
280BH
Sleeps 8



300BHS
Single Slide-Out
Sleeps 8



320DBHS
Single Slide-Out
Sleeps 10



Sleeping capacity based on standard layout.
Optional furniture may increase or decrease sleeping capacity.

Exterior Storage = ▲

Standard Features

Interior

THROUGHOUT

- **Wall-Mounted Systems Monitor Panel***
- **Miniblinds Throughout* (Except Bunk Windows)**
- **6-Gallon LP Gas Water Heater***
- **Wall-Switched Interior Lights***
- Hydroflame Forced Air, Furnace w/Thermostat
- Double-Light Fixtures (Most Areas)
- 92 5/8" Interior Width
- Light Colored Interior Wall Coverings
- Prewired for Stereo and Speakers
- In-Floor Rigid Furnace Ducting (Most Models)
- In-Ceiling Rigid Air Conditioner Ducting (Most Models)
- Dual 7-Gallon LPG Cylinders w/Regulator & Auto-Changeover

LIVING ROOM

- **Large TV Location (Most Models)***

GALLEY

- **Dometic® Double Door LPG/Electric Refrigerator***
- **Magic Chef® 3-Burner (1 High-Output), Range w/Oven (Most Models)***

BEDROOM

- **Innerspring Mattress***
- **Lift-Up Bed Platform w/Below Bed Storage (Most Models)***

BATHROOM

- **Medicine Cabinet w/Mirrored Door & Adjustable Shelves***
- **Wall-Switched Ceiling Light***

- Prewired for Roof Air Conditioner
- 120V Central Electrical Panel
- 120-Volt GFI Circuit Protection (Galley/Bath/Patio)
- Solid State Converter w/Built-in Battery Charger
- Fire Extinguisher
- Smoke Detector/Alarm
- LPG Detector/Alarm

• Built-In Magazine Rack*

- **Double Bowl Stainless Steel Sink***
- Double Handle High Rise Faucet
- Range Hood w/12V Light and Exhaust Fan
- Pre-finished Refrigerator Insert
- Large Cabinet Doors
- Overhead Storage Cabinet Above Sink
- Pantry w/Adjustable Shelves (Most Models)

- Decor-Coordinated Bedspread
- Bedroom Headboard (Most Models)
- Bedside Nightstand (Most Models)
- Wardrobes Accommodate Residential Size Clothes Hangers

- 12V Power Exhaust Roof Vent
- Towel Bar, Towel Ring, Toilet Paper Holder
- Thetford Fresh Water Flush Toilet

Options

THROUGHOUT (INTERIOR)

- Stereo AM/FM CD Player
- 13,500 BTU Air Conditioner
- Bedroom Carpet (Most Models)
- Living Room Carpet (Most Models)
- Microwave Oven

THROUGHOUT (EXTERIOR)

- Awning
- Exterior Shower
- Exterior Barbecue
- Spare Tire
- T.V. Antenna

* Denotes Fleetwood's Key Features

Exterior

THROUGHOUT

- **Arctic White Gloss Exterior Metal Finish***
- **One-Piece Seamless Rubber Roof* w/Kick Panel***
- **Reinforced Screen Door**
- **LPG Quick Connector (Low Pressure)***
- **Welded, Dual Battery Rack***
- Structural I-Beam Cambered Chassis
- Rear Bumper w/Sewer Hose Carrier
- Radius Aluminum Sidewall Skirting (Most Models)
- Molded Wheel Well Skirts (Most Models)
- Fiberglass Insulation
- Quick Drain Valve Fresh Water Tank
- Radius Truss Roof Rafters
- Radius Corner Windows
- Sub-Floor Fresh Water Holding Tank
- 120V Patio Receptacle
- Full Color Decorative Exterior Graphics

SAFETY/CONVENIENCE

- **30" Wide Main Entry Door w/Window (Most Models)***
- Flush Mount Entry Door Latch w/Deadbolt Lock
- Patio Light - Interior Switch
- 4-Wheel Electric Brakes
- Retractable Entry Step w/Non-Skid Strip

STORAGE

- **Locking, Insulated Luggage Doors***

Decor Choices

• Lake (Blue)

• Heather (Rose)

• Praline (Brown)

To Our Customers...

To make sure that you get the maximum satisfaction out of your recreational vehicle purchase, there are several things you should know:

1. Learn all you can about the travel trailer or fifth wheel you're planning to buy. Don't rely on word of mouth. Get the facts about the actual trailer length, width, unloaded weight with options, Gross Vehicle Weight Rating, and cargo carrying capacity. These are usually available in the manufacturer's sales literature or from the Cargo Carrying Capacity Label located in each trailer. Be sure to check this information **before** you decide which unit to buy.
2. Verify the towing capacity of your tow vehicle. If you don't know, or aren't sure, you can ask at your automotive dealership. Be sure to match its tow rating to the loaded (not dry) weight of your trailer. Include the weight of water, additional accessories, clothing, food, and gear. To help Fleetwood travel trailer customers estimate this total weight, our Gross Vehicle Weight Ratings reflect the maximum weight of the trailer when fully loaded for camping. Be sure the weight of the tow vehicle plus the weight of your trailer do not exceed the Gross Combined Weight Rating of the tow vehicle.

Taking these simple steps before you buy will help ensure that your trailer and tow vehicle combination is just what you wanted.

Happy Camping!

Weights and Measurements

WEIGHTS	180CK	190FQ	210CKS	240BH	250FQ
GVWR (lbs.) ¹	5,900	6,200	6,400	6,600	6,400
Gross Dry Weight (lbs.) ^{2,6}	3,647*	3,820*	4,218*	4,618*	4,333*
Maximum Carrying Capacity (lbs.) ^{3,6}	2,253*	2,380*	2,182*	1,982*	2,067*
Hitch Dry Weight (lbs.) ^{2,6,9}	462*	531*	607*	626*	552*
DIMENSIONS AND CAPACITIES					
Length (Feet and Inches) ^{4,6,8}	22' 2"	22' 11"	24' 7"	25' 10"	26' 0"
Height (Feet and Inches) ^{5,6}	9' 11"	9' 11"	9' 11"	9' 11"	9' 11"
Fresh Water Holding Tank (gal.) ^{6,7}	50	50	50	50	50
Grey Water Holding Tank (gal.) ^{6,7}	40	40	40	40	40
Black Water Holding Tank (gal.) ^{6,7}	40	40	40	40	40
LP Gas Capacity (lbs.) ^{6,7}	60	60	60	60	60
Tire Size (Load Range)	ST205/ 75R 14(B)	ST205/ 75R 14(B)	ST205/ 75R 14(B)	ST205/ 75R 14(C)	ST205/ 75R 14(B)

WEIGHTS	270FQS	280BH	300BHS	320DBHS
GVWR (lbs.) ¹	7,900	7,500	9,500	9,500
Gross Dry Weight (lbs.) ^{2,6}	5,214	4,766*	6,183*	6,518*
Maximum Carrying Capacity (lbs.) ^{3,6}	2,686	2,734*	3,317*	2,982*
Hitch Dry Weight (lbs.) ^{2,6,9}	693	641*	805*	841*
DIMENSIONS AND CAPACITIES				
Length (Feet and Inches) ^{4,6,8}	27' 10"	29' 6"	32' 3"	33' 11"
Height (Feet and Inches) ^{5,6}	10' 1"	9' 11"	10' 2"	10' 2"
Fresh Water Holding Tank (gal.) ^{6,7}	50	50	50	50
Grey Water Holding Tank (gal.) ^{6,7}	40	40	40	40
Black Water Holding Tank (gal.) ^{6,7}	40	40	40	40
LP Gas Capacity (lbs.) ^{6,7}	60	60	60	60
Tire Size (Load Range)	ST205/ 75R 14(C)	ST205/ 75R 14(C)	ST225/ 75R 15(C)	ST225/ 75R 15(C)

- GVWR (Gross Vehicle Weight Rating) is the maximum permissible weight of this trailer when fully loaded. It includes all weight at the trailer axle(s) and tongue or pin.
- All dry weights are based on the standard model and do not include optional features or equipment.
- Maximum Carrying Capacity is determined by subtracting Gross Dry Weight from GVWR. Maximum Carrying Capacity includes all fluids, optional features, equipment, and personal cargo.
- Trailer length includes 3' 6" for hitch; fifth wheel includes standard pin box.
- Add 9" if equipped with optional roof air conditioner.
- Approximate.
- Water weight equals 8.3 lbs per gallon. LP Gas weight equals 4.2 lbs per gallon.
- Add 10" if equipped with optional spare tire and carrier.

- Hitch weights are dependent upon how the trailer is equipped with options, on-board cargo and tank fluid levels. Actual hitch weights may be higher or lower than shown. It is recommended that the tow vehicle and hitch for your trailer have sufficient capacity to accommodate actual usage.

* = Estimated Weights

IMPORTANT— PLEASE READ: Product information, photography and illustrations included in this publication were as accurate as possible at the time of printing. For further product information and changes, please visit our website at www.fleetwoodrv.com or contact your local Fleetwood dealer. Prices, materials, design and specifications are subject to change without notice. All weights, fuel, liquid capacities and dimensions are approximate. Fleetwood has designed its recreational vehicles to provide a variety of uses for customers. Each vehicle features optimal seating, sleeping, storage and fluid capacities. The user is responsible for selecting the proper combination of loads (i.e., occupants, equipment, fluids, cargo, etc.) to ensure that the vehicle's capacities are not exceeded.



Setting the Standard in Travel Trailer Quality.

Fleetwood® prototypes are exposed to thousands of miles of durability testing. Those components that don't survive are redesigned until they do. This sets the standard in safety and durability.

Reinforced Cambered Steel Chassis – Provides optimal strength, durability and performance.

Arctic White Seamless Synthetic Roof Membrane – Provides the ideal weather seal.

.024 Aluminum Siding – Complete with a baked-on enamel paint, this aluminum siding offers rigidity while still being affordable.

In-Ceiling Air Conditioning Duct – Better distributes cool air throughout the RV than in-floor ducting.

Heavy Duty Ramp Door – Rated at 2,500 lbs. Includes non-skid ramp door surface and cam lock door hardware (ASV floor plans only).

What Drives You?

Maybe it's feeling like you're the only one on Earth. Perhaps it's the unique sense of closeness with the great outdoors. Or, it might be the joy that comes from spending quality time with family and friends. Whatever the reason, we know that you have a strong drive to experience everything that comes with spending time on the road. And for more than 50 years, we've shared that passion with you. Because we're RV enthusiasts ourselves, you can see our passion in the vehicles we design and build. Own a Fleetwood, and you'll feel like you're not just traveling, but embarking on an experience unlike any other. Set your own course for adventure and get out there and explore the world around you. Once you do, you'll see what it is that drives us — it's you.

RV OWNERCARE*

The Fleetwood One-Year Hitch to Bumper Warranty Coverage*
This comprehensive program includes systems, appliances, components and construction – with no additional costs to you.

One-Year Full Warranty*

Leaving the Fleetwood dealership after you've purchased your RV doesn't mean leaving Fleetwood's commitment to your satisfaction behind. This complete warranty is unique because it's just that – complete.

Fully Transferable*

Because we don't hesitate to stand behind our products, the complete **warranty is fully transferable** during the 12 months of warranty coverage, which is a plus for resale value.

National Coverage

Traveling to Spokane? Buffalo? We've got you covered with one of the nation's largest trained service networks. In fact, **1,100 Fleetwood dealers** are just a phone call away.

**Require these features when you purchase your new RV...
Fleetwood does.**



www.fleetwoodrv.com

CLUB FLEETWOOD As a Fleetwood owner, you're eligible to become a member of our owners' group, Club Fleetwood. It's a perfect way to meet other Fleetwood owners who love to travel to beautiful resorts and vacation spots all across America. Call (877) 577-2560 and join the fun! Or visit www.fleetwood.com/clubs to learn more.

FLEETWOODRV.COM To locate a dealer near you, visit our website or call 1-800-444-4905. We can also be contacted at Fleetwood Customer Relations, P.O. Box 7638, Riverside, CA 92513-7638.

IMPORTANT—PLEASE READ Product information, photography and illustrations included in this publication were as accurate as possible at the time of printing. For further product information and changes, please visit our website at www.fleetwoodrv.com or contact your local Fleetwood dealer. Prices, materials, design and specifications are subject to change without notice. All weights, fuel, liquid capacities and dimensions are approximate. Fleetwood has designed its recreational vehicles to provide a variety of uses for customers. Each vehicle features optimal seating, sleeping, storage and fluid capacities. The user is responsible for selecting the proper combination of loads (i.e.: occupants, equipment, fluids, cargo, etc.) to ensure that the vehicle's capacities are not exceeded.

Your local Fleetwood dealer is:

*For complete info see your Fleetwood dealer. © 2004. Fleetwood Enterprises, Inc. Printed in the USA. Inventory control number PI05F2 11/04.

