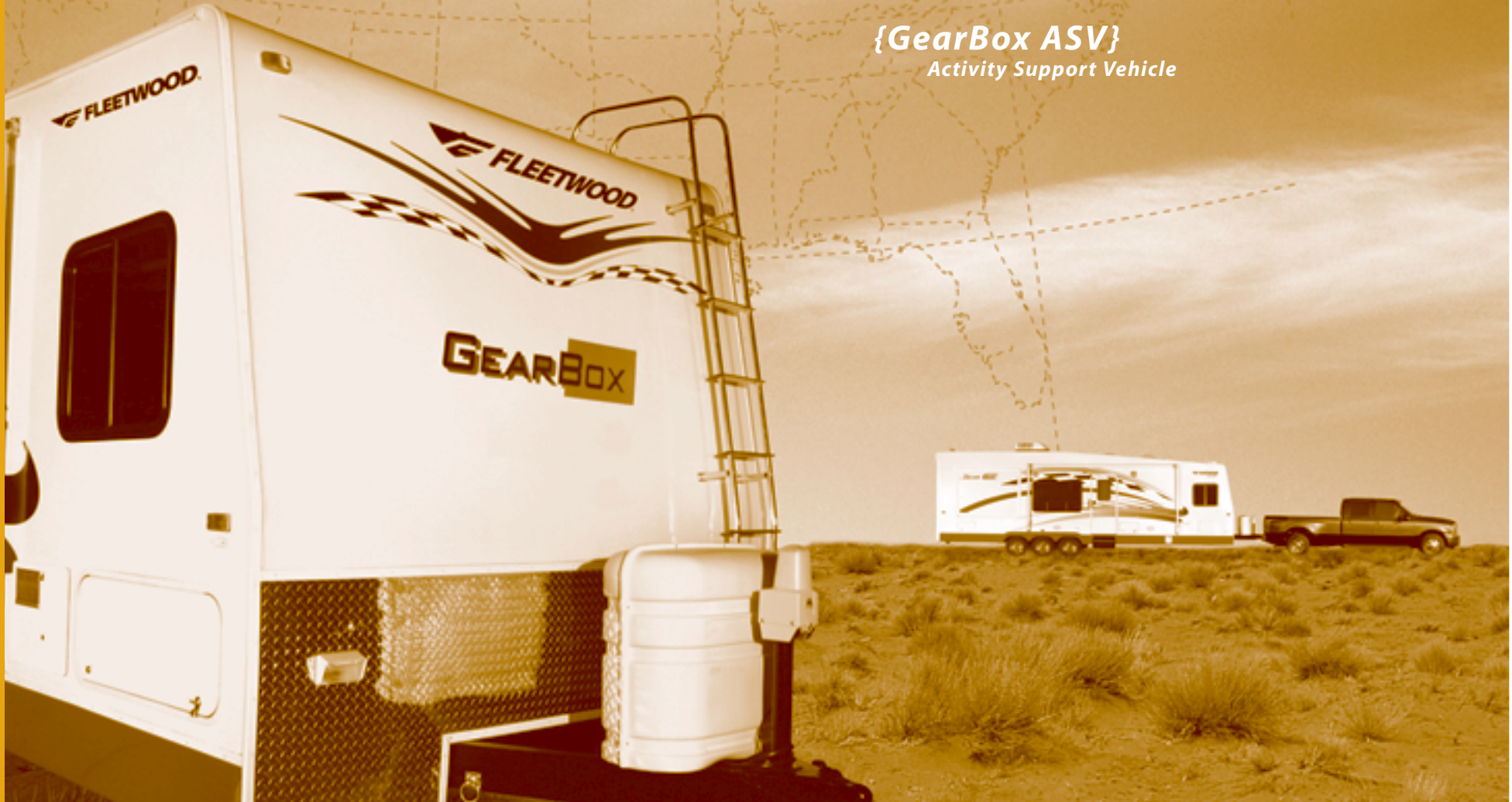




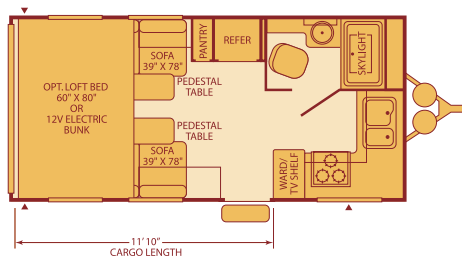
{GearBox ASV}
Activity Support Vehicle

GearBox ASV Toy Haulers 2005

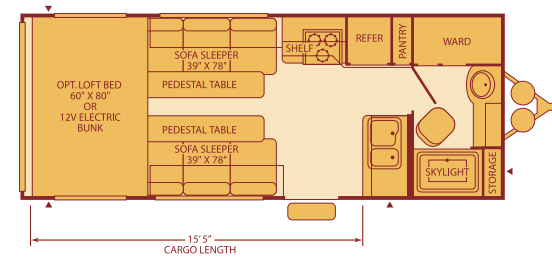


Toy Hauler Floor Plans

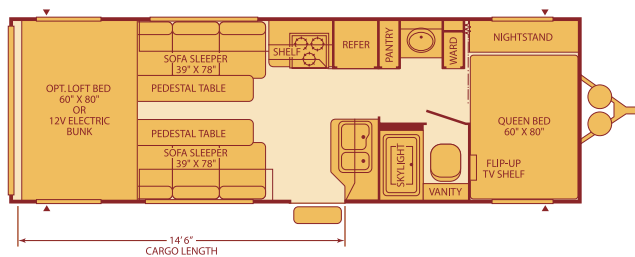
180FK Sleeps 4



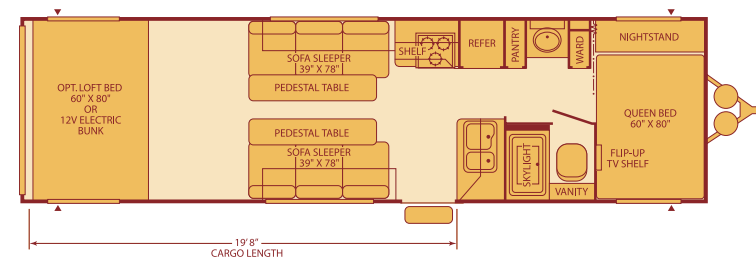
220FB Sleeps 4



260FS Sleeps 6



310FS Sleeps 6



Some models are not available in all areas of the country.
Please see your local dealer for model availability.

Sleeping capacity based on standard layout. Optional furniture may increase or decrease sleeping capacity.

Exterior Storage = ▲

Standard Features

Interior

THROUGHOUT

- Hydroflame Forced Air Furnace, Direct Spark Ignition (DSI) w/Thermostat*
- Flush Floor Cargo Tie-Downs*
- Upgraded Vinyl Flooring*
- Over-Sized Overhead Cabinets and Cabinet Doors*
- 7'2" Ramp Door Length*
- Cam Lock Ramp Door Hardware*
- 2,500 lb. Ramp Door Rating*
- Non-Skid Ramp Door Surface*
- Beavertail Departure Angle (Cargo Floor)*
- 6-Gallon LP Gas Water Heater
- Water Heater Bypass

LIVING ROOM

- Built-In TV Compartment*
- Cable TV Hook-up
- Facing Fold-Away Sofa Sleeper

GALLEY

- Slide-Out Counter Extension*
- 6 cu.ft. Dometic® Double Door Refrigerator
- Magic Chef® 3-Burner Cook Top, Hi-Output and Piezo Lite
- 60/40 Sink
- Range Hood with 12V Light and Exhaust Fan
- Built-In Spice Shelf

BEDROOM

- Queen Size Bed w/Under Bed Storage (260FS & 310FS)*
- TV Shelf (260FS & 310FS)*
- Folding Privacy Door (260FS & 310FS)*
- Integrated Magazine Rack*
- Mini Blinds

BATHROOM

- Medicine Cabinet with Mirrored Door & 2 Adjustable Shelves*
- Toilet Paper Holder
- Towel Ring
- Towel Bars (2)
- ABS Tub/Shower Walls
- Skylight
- Lever Bath Door Handle
- Power Exhaust Roof Vent

Decor Choice

- Cabana (Coffee)

Weights and Measurements

WEIGHTS	180FK	220FB	260FS	310FS
GVWR (lbs.)¹	8,400	9,500	11,400	13,000
Gross Dry Weight (lbs.)^{2,6}	4,586	5,370	5,957	7,240
Maximum Carrying Capacity (lbs.)^{3,6}	3,814	4,130	5,443	5,760
Hitch Dry Weight (lbs.)^{2,6,8}	759	873	1,061	1,056
DIMENSIONS AND CAPACITIES				
Length (Feet & Inches)^{4,6}	22' 0"	25' 10"	29' 10"	34' 9"
Height (Feet & Inches)^{5,6}	11' 5"	11' 5"	11' 5"	11' 5"
Fresh Water Holding Tank (gal.)^{6,7}	50	100	100	120
Grey Water Holding Tank (gal.)^{6,7}	40	40	40	55
Black Water Holding Tank (gal.)^{6,7}	40	40	40	40
LP Gas Capacity (lbs.)^{6,7}	60	60	60	60
Tire Size (Load Range)	ST225 75R 15(C)	ST225 75R 15(D)	ST225 75R 15(D)	ST225 75R 15(D)

IMPORTANT—PLEASE READ: Product information, photography and illustrations included in this publication were as accurate as possible at the time of printing. For further product information and changes, please visit our website at www.fleetwoodrv.com or contact your local Fleetwood dealer. Prices, materials, design and specifications are subject to change without notice. All weights, fuel, liquid capacities

Exterior

THROUGHOUT

- Structural Steel C-Channel Main Rails*
- Cambered Chassis*
- Integrated Dual Battery Rack*
- LP Bib Quick Disconnect (Low Pressure)*
- EZ-Lube Axles
- Chrome Wheels
- Entry Step
- Diamond Plate Gravel Guard
- Safety Glass Windows
- Quick Drain Knife Valve (Fresh Water Tank)
- Dual 7 Gallon (30 lb.) LP Gas Tanks
- Exterior Ladder
- LP Gas Tank Cover
- Pet/Security Attachments (2)
- Rubber Roof
- Fiberglass Insulation
- 120V Patio Receptacle
- Amber Patio Light

SAFETY/CONVENIENCE

- 30" Entry Door, Safety Glass Window w/Screen Door (Most Models)*
- 120V GFI Circuit Protection (Galley/Bath/Patio)

STORAGE

- Luggage Doors Radius Corner (Where Applicable)*
- Power Cord Storage
- Sewer Hose Storage

Options

THROUGHOUT

- Roof Rack
- Pump Station w/18 Gallon Fuel Tank
- 13,500 BTU Air Conditioner
- 4.0 kW Generator (Onan®) w/Pump Station (30 Gallon Fuel Tank) (N/A 180FK)
- 4.0 kW Generator (Onan®) (N/A 180FK)
- Generator Ready
- Cargo Divider Wall (310FS only)
- Carbon Monoxide Detector/Alarm (Standard Feature as of 01/01/05)
- Scissor Stab Jack (2 Pair)
- Awning
- Exterior Shower
- RVQ Exterior BBQ
- TV Antenna
- Exterior Washer w/Pressurized Nozzle
- Exterior Speakers
- Flood Lights

LIVING ROOM

- Commercial Grade Carpet Kit
- Strut Assisted Overhead Loft w/Queen-Size Futon, Bunk Ladder & Privacy Curtain
- Electric 12V Loft Bunk

GALLEY

- Microwave Oven
- 16" Magic Chef® Range w/Built-in 3-Burner, Hi-Output w/Piezo Lite

* Denotes Fleetwood's Key Features

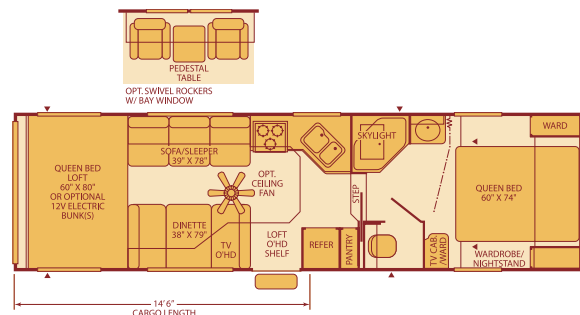
1. GVWR (Gross Vehicle Weight Rating) is the maximum permissible weight of this trailer when fully loaded. It includes all weight at the trailer axle(s) and tongue or pin.
2. All dry weights are based on the standard model and do not include optional features or equipment.
3. Maximum Carrying Capacity is determined by subtracting Gross Dry Weight from GVWR. Maximum Carrying Capacity includes all fluids, optional features, equipment, and personal cargo.
4. Trailer length includes 3' 6" for hitch; fifth wheel includes standard pin box.
5. Add 9" if equipped with optional roof air conditioner.
6. Approximate.
7. Water weight equals 8.3 lbs per gallon. LP Gas weight equals 4.2 lbs per gallon.
8. Hitch weights are dependent upon how the trailer is equipped with options, on-board cargo and tank fluid levels. Actual hitch weights may be higher or lower than shown. It is recommended that the tow vehicle and hitch for your trailer have sufficient capacity to accommodate actual usage.

and dimensions are approximate. Fleetwood has designed its recreational vehicles to provide a variety of uses for customers. Each vehicle features optimal seating, sleeping, storage and fluid capacities. The user is responsible for selecting the proper combination of loads (i.e., occupants, equipment, fluids, cargo, etc.) to ensure that the vehicle's capacities are not exceeded.

Fifth Wheel Floor Plans

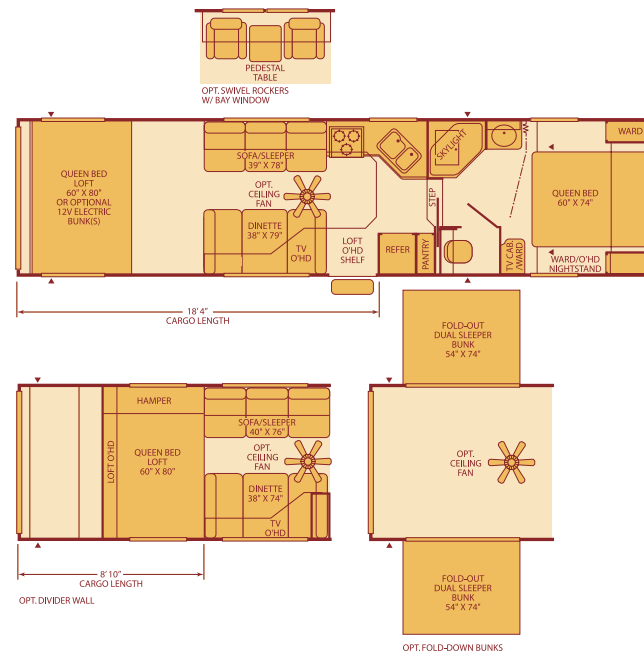
295FS

Sleeps 8



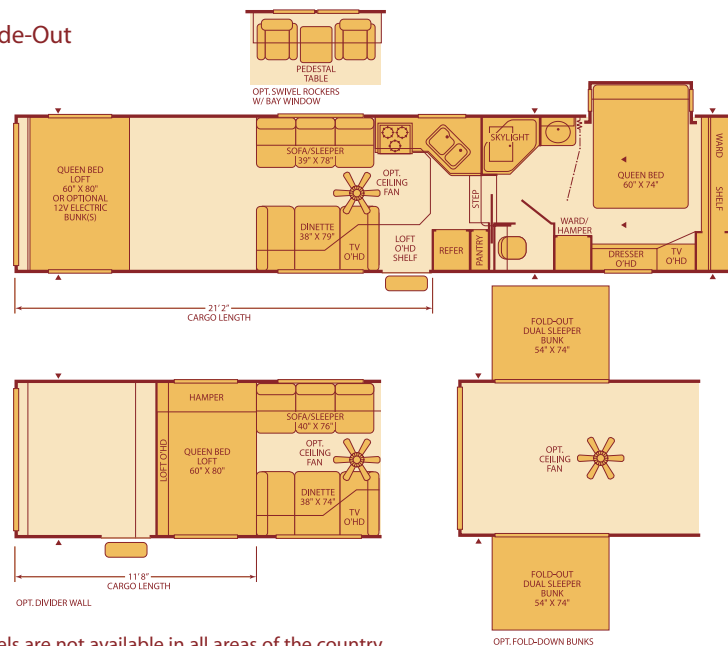
335FS

Sleeps 8



375FSG

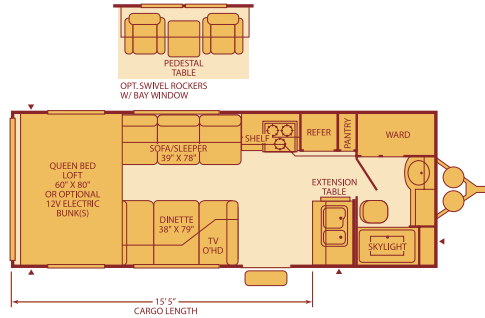
Single Slide-Out
Sleeps 8



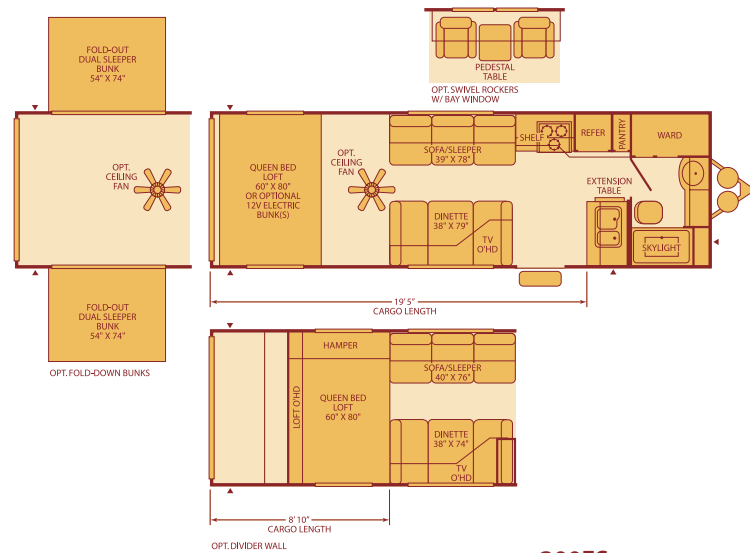
Some models are not available in all areas of the country.
Please see your local dealer for model availability.

Travel Trailer Floor Plans

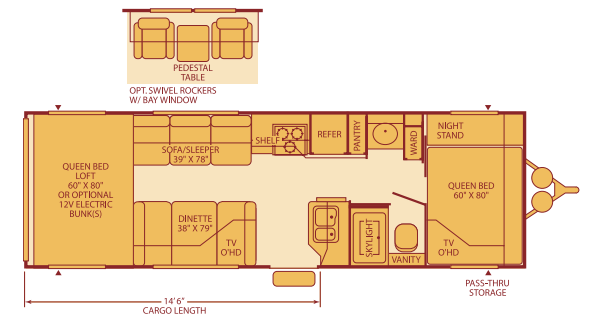
220FB
Sleeps 6



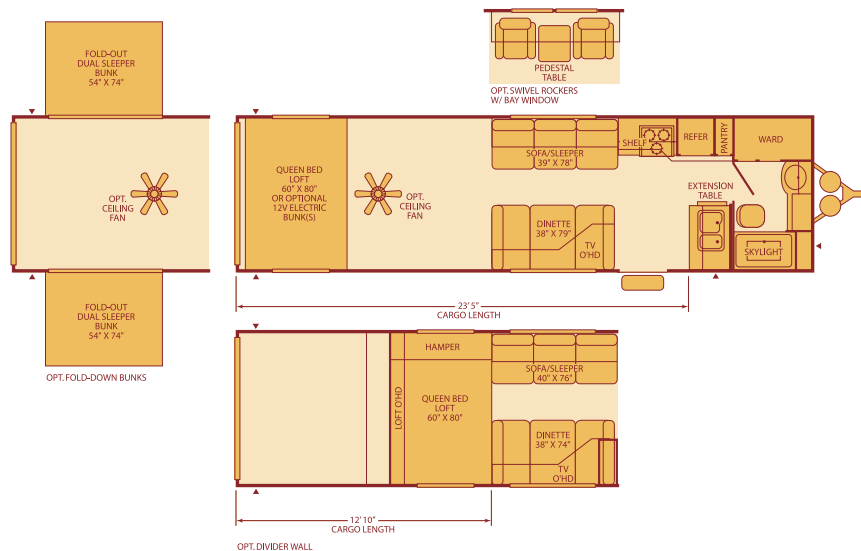
260FB
Sleeps 6



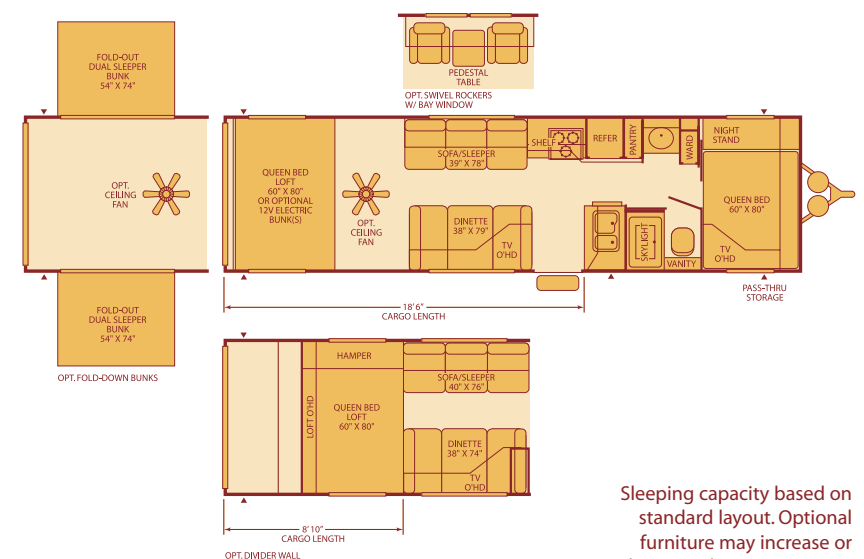
260FS
Sleeps 8



300FB
Sleeps 6



300FS
Sleeps 8



Sleeping capacity based on standard layout. Optional furniture may increase or decrease sleeping capacity.

Exterior Storage = ▲

Standard Features

Interior

THROUGHOUT

- **Strut Assisted Overhead Loft w/Queen Size Futon, Bunk Ladder & Privacy Curtain***
- **Beavertail Departure Angle* (Cargo Floor)**
- **Large Overhead Cabinets and Cabinet Doors***
- **Commercial Grade Carpet Kit***
- **Commercial Grade Vinyl Flooring***
- Rear Overhead Loft Cabinet
- Diamond Plate Sidewall/ Floor Accent
- 9-Flush Floor Cargo Tie-Downs
- 4-Sidewall Located Cargo Tie-Downs
- Hydroflame Forced Air Furnace, Direct Spark Ignition (DSI) w/Thermostat

LIVING ROOM

- **AM/FM/CD Stereo w/4 Cube Speakers & Subwoofer***
- **CD Storage Compartment***
- **Indoor/Outdoor Dinette Table (Removable)***
- Fold-Away Dinette/Sleeper

GALLEY

- **Flip-Up Counter Extension***
- **Toe-Kick***
- **Adjustable Wire Baskets* (Pantry)**
- Accent Cabinet Door Inserts
- Hi-Rise Faucet
- 60/40 Sink
- 2 Sink Lids
- Bread Board
- Knife Rack
- Adjustable Shelves-Galley Overhead
- Built-In Spice Shelf
- Upgraded Paper Towel Holder
- Halogen Accent Lighting
- Fluorescent Lighting
- 8 cu. ft. Dometic® Double Door Refrigerator

BEDROOM

- **Queen Size Bed w/Under Bed Storage* (260FS & 300FS)**
- TV Cabinet/Shelf (260FS & 300FS)
- Mini Blinds or Fabric Shades
- Black Out Ceiling Vent (260FS, 300FS & Fifth Wheel Models)
- 16" Maytag® 3-Burner (1 High-Output) Range w/Oven (Travel Trailer Models)
- 22" Maytag® 3-Burner (1 High-Output) Range w/Oven (Fifth Wheel Models)
- Range Hood with 12V Light and Exhaust Fan
- Microwave Oven
- Trash Can

BATHROOM

- **Medicine Cabinet with Mirrored Door & 2 Adjustable Shelves***
- **Retractable Tub/Shower Enclosure***
- Recessed Toilet Paper Holder
- Clothes Hamper
- ABS Tub/Shower Walls
- Removable Wire Baskets w/Basket Liner
- Wardrobe w/Ventilated Hanger/Shelving
- Riding Gear Storage Shelf (220FB, 260FB, 300FB)
- Towel Ring
- Towel Bars (2)
- Skylight
- Lever Bath Door Handle
- Decorative 3-Bulb Vanity Lighting
- Power Exhaust Roof Vent

Options Interior

THROUGHOUT

- Bunk Beds w/12V Electric Lift
- Ceiling Fan
- Swivel Rockers w/Bay Windows
- Central Vacuum
- Fan-Tastic® Power Roof Vent
- Entertainment Group Includes 19" TV/DVD Player & Audio/Video Jacks
- Fold-Down Tent Bunks (Roadside & Doorside)
- Screen Room (Ramp Door)
- 12V Power Jack
- 15,000 BTU Air Conditioner
- Ice Maker
- Interior Work Bench
- Power Winch (800 lbs.) w/Cable Remote
- Satellite Dish
- Vapor Wall

BATHROOM

- Foot Pedal Toilet
- Tank Flush System (Solid Tank)

GALLEY

- Deluxe Refrigerator Door Inserts
- 22" Maytag® 3-Burner (1 High-Output) Range w/Oven (Travel Trailer Models)

SAFETY/CONVENIENCE

- Carbon Monoxide Detector/Alarm (Standard Feature as of 01/01/05)

Decor Choices

- Bryce Canyon
- Party Animal
- Rev Red (Optional)

*Denotes Fleetwood Key Features

Exterior

THROUGHOUT

- **7' 2" Ramp Length***
- **Ramp Rated at 2,500 lbs.***
- **Non-Skid Ramp Surface***
- EZ-Lube Axles
- Integrated Dual Battery Rack
- Chrome Wheels
- Hickory Springs Triple Entry Step
- LP Bib Quick Disconnect (Low Pressure)
- Quick Drain Knife Valve (Fresh Water Tank)
- Roof Rack
- Dual 7 Gallon (30 lb.) LP Gas Tanks w/Sight Gauge
- Ladder
- LP Gas Tank Cover
- Power Cord Storage
- Sewer Hose Storage
- Rubber Roof
- Deep Tint Safety Glass Windows
- Awning
- Diamond Plate Gravel Guard
- Exterior Shower
- Ice Chest/Tool Box
- 30" Radius Corner Entry Door, Safety Glass Window w/Screen Door
- R-7 Fiberglass Insulation , (Floor, Sidewall, Front Section)
- R-11 Fiberglass Insulation (Ceiling)
- Protective Stop Bumpers on Ramp Door
- Cam Lock Ramp Door Hardware
- Cable TV Hook-Up/Phone Jack
- TV Antenna

SAFETY/CONVENIENCE

- **120V GFI Circuit Protection (Galley/Bath/Patio)***
- 120V Patio Receptacle
- Illuminated Light Switches at Entry/Cargo Door(s)
- Back-Up Lights
- Amber Patio Light

BODY STRUCTURE

- **Structural Steel C-Channel Main Rails (N/A 385FS2G)***
- **Cambered Chassis***

STORAGE

- **Luggage Doors Radius Corner* (Where Applicable)**
- **Ozite Carpeted Luggage Compartments***

Options Exterior

THROUGHOUT

- Heated Holding Tanks
- Scissor Stab Jack (2 Pair)
- Screen Partition
- Bicycle Rack Receiver
- Chassis Mount Spare Tire
- RVQ Exterior BBQ
- Exterior Spotlight
- Exterior Speakers
- Exterior Washer w/Pressurized Nozzle
- Exterior Work Bench (Removable)
- Family 2-Way Radios (4) w/Charging Station
- Flood Lights
- Shock Absorbers
- Spare Tire (Radial)
- Heavy Duty Roof Rack System
- Chassis Integrated 3-Gallon Air Tank w/Compressor and 25 ft. Hose
- 5.5 kW Generator (Onan®) w/Pump Station (30 Gallon Tank)
- 5.5 kW Generator (Onan®) w/Pump Station (Dual Tanks, 30 & 18 Gallon Tank)

Fleetwood Exclusives

• **Whole Coach Water Filtration System***

• **Multiple Pet/Security Attachment Rings***

• **Concealed Spring Ramp Door Construction***

• **Sidewall Located Center Turn Signals***

• **Entertainment Group Includes 19" TV/DVD Player & Audio/Video Jacks***

• **Bicycle Rack Receiver (Optional)***

• **Central Vacuum (Optional)***

• **Interior Work Bench (Optional)***

• **Chassis Integrated On-Board Air Compressor (Optional)***

IMPORTANT— PLEASE READ: Product information, photography and illustrations included in this publication were as accurate as possible at the time of printing. For further product information and changes, please visit our website at www.fleetwoodrv.com or contact your local Fleetwood dealer. Prices, materials, design and specifications are subject to change without notice. All weights, fuel, liquid capacities and dimensions are approximate. Fleetwood has designed its recreational vehicles to provide a variety of uses for its customers. Each vehicle features optimal seating, sleeping, storage and fluid capacities. The user is responsible for selecting the proper combination of loads (i.e. occupants, equipment, fluids, cargo, etc.) to ensure that the vehicle's capacities are not exceeded.

Weights and Measurements

WEIGHTS	FIFTH WHEELS			TRAVEL TRAILERS				
	295FS	335FS	375FSG	220FB	260FB	260FS	300FB	300FS
GVWR (lbs.) ¹	13,600	14,300	17,000	11,000	11,500	11,400	14,000	14,000
Gross Dry Weight (lbs.) ^{2,5}	7,833*	8,583*	10,272	5,963	6,366	6,772	7,311	7,628
Maximum Carrying Capacity (lbs.) ^{3,5}	5,767*	5,717*	6,728	5,037	5,134	4,628	6,689	6,372
Hitch Dry Weight (lbs.) ^{2,5,7}	1,983*	2,119*	2,361	981	920	1,032	1,100	1,125

DIMENSIONS AND CAPACITIES

Length (Feet and Inches) ^{4,5}	31' 4"	35' 4"	38' 8"	25' 10"	29' 10"	29' 10"	33' 10"	33' 10"
Height (Feet and Inches) ⁵	12' 9"	12' 9"	13' 1"	12' 2"	12' 2"	12' 2"	12' 2"	12' 2"
Fresh Water Holding Tank (gal.) ^{5,6}	120	120	120	120	120	120	120	120
Grey Water Holding Tank (gal.) ^{5,6}	55	55	55	55	55	55	55	55
Black Water Holding Tank (gal.) ^{5,6}	40	40	40	40	40	40	40	40
LP Gas Capacity (lbs.) ^{5,6}	60	60	60	60	60	60	60	60
Tire Size (Load Range)	ST235/80R 16D	ST235/80R 16D	ST235/80R 16D	ST225/75R 15D	ST225/75R 15D	ST225/75R 15D	ST225/75R 15D	ST225/75R 15D

1. GVWR (Gross Vehicle Weight Rating) is the maximum permissible weight of this trailer when fully loaded. It includes all weight at the trailer axle(s) and tongue or pin.
2. All dry weights are based on the standard model and do not include optional features or equipment.
3. Maximum Carrying Capacity is determined by subtracting Gross Dry Weight from GVWR. Maximum Carrying Capacity includes all fluids, optional features, equipment, and personal cargo.
4. Trailer length includes 3' 6" for hitch; fifth wheel includes standard pin box.

5. Approximate.
 6. Water weight equals 8.3 lbs per gallon. LP Gas weight equals 4.2 lbs per gallon.
 7. Hitch weights are dependent upon how the trailer is equipped with options, on-board cargo and tank fluid levels. Actual hitch weights maybe higher or lower than shown. It is recommended that the tow vehicle and hitch for your trailer have sufficient capacity to accommodate actual usage.
- * = Estimated weights.

To Our Customers

To make sure that you get the maximum satisfaction out of your recreational vehicle purchase, there are several things you should know:

1. Learn all you can about the travel trailer or fifth wheel you're planning to buy. Don't rely on word of mouth. Get the facts about the actual trailer length, width, unloaded weight with options, Gross Vehicle Weight Rating, and cargo carrying capacity. These are usually available in the manufacturer's sales literature or from the Cargo Carrying Capacity Label located in each trailer. Be sure to check this information **before** you decide which unit to buy.
2. Verify the towing capacity of your tow vehicle. If you don't know, or aren't sure, you can ask at your automotive dealership. Be sure to match its tow rating to the loaded (not dry) weight of your trailer. Include the weight of water, additional accessories, clothing, food, and gear. To help Fleetwood travel trailer customers estimate this total weight, our Gross Vehicle Weight Ratings reflect the maximum weight of the trailer when fully loaded for camping. Be sure the weight of the tow vehicle plus the weight of your trailer do not exceed the Gross Combined Weight Rating of the tow vehicle.

Taking these simple steps before you buy will help ensure that your trailer and tow vehicle combination is just what you wanted.

Happy Camping!



Setting the Standard in Fifth Wheel & Travel Trailer Quality.

Fleetwood® prototypes are exposed to thousands of miles of durability testing. Those components that don't survive are redesigned until they do. This sets our standard in safety and durability.

Artic White Seamless Synthetic Roof Membrane - Provides the ideal weather seal.

Aluminum Siding - Complete with a baked-on enamel paint, this aluminum siding offers rigidity while still being affordable.

Smooth Gloss Fiberglass Exterior Siding - Stronger than aluminum siding, this glossy surface is easy to clean and adds beauty and structural integrity (optional).

In-Ceiling Air Conditioning Duct - Better distributes cool air throughout the RV than in-floor ducting.

Heavy Duty Ramp Door - Rated at 2,500 lbs. Includes concealed spring construction (S4 models only) for protection against the elements.

What Drives You?

Maybe it's feeling like you're the only one on Earth. Perhaps it's the unique sense of closeness with the great outdoors. Or, it might be the joy that comes from spending quality time with family and friends. Whatever the reason, we know that you have a strong drive to experience everything that comes with spending time on the road. And for more than 50 years, we've shared that passion with you. Because we're RV enthusiasts ourselves, you can see our passion in the vehicles we design and build. Own a Fleetwood, and you'll feel like you're not just traveling, but embarking on an experience unlike any other. Set your own course for adventure and get out there and explore the world around you. Once you do, you'll see what it is that drives us — it's you.

RV OWNERCARE*

The Fleetwood One-Year Hitch to Ramp Warranty Coverage*
This comprehensive program includes systems, appliances, components and construction – with no additional costs to you.

One-Year Full Warranty*

Leaving the Fleetwood dealership after you've purchased your RV doesn't mean leaving Fleetwood's commitment behind. This complete warranty is unique because it's just that – complete.

Fully Transferable*

Because we don't hesitate to stand behind our products, the complete **warranty is fully transferable** during the 12-months of warranty coverage, which is a plus for resale value.

National Coverage

Traveling to Spokane? Buffalo? We've got you covered with one of the nation's largest trained service networks. In fact, **1,100 Fleetwood dealers** are just a phone call away.

**Require these features when you purchase your new RV...
Fleetwood does.**

CLUB FLEETWOOD As a Fleetwood owner, you're eligible to become a member of our owners' group, Club Fleetwood. It's a perfect way to meet other Fleetwood owners who love to travel to beautiful resorts and vacation spots all across America. Call (877) 577-2560 and join the fun! Or visit www.fleetwood.com/clubs to learn more.

FLEETWOODRV.COM To locate a dealer near you, visit our web site or call 1-800-444-4905. We can also be contacted at Fleetwood Customer Relations, P.O. Box 7638, Riverside, CA 92513-7638.

IMPORTANT—PLEASE READ Product information, photography and illustrations included in this publication were as accurate as possible at the time of printing. For further product information and changes, please visit our website at www.fleetwoodrv.com or contact your local Fleetwood dealer. Prices, materials, design and specifications are subject to change without notice. All weights, fuel, liquid capacities and dimensions are approximate. Fleetwood has designed its recreational vehicles to provide a variety of uses for customers. Each vehicle features optimal seating, sleeping, storage and fluid capacities. The user is responsible for selecting the proper combination of loads (i.e.: occupants, equipment, fluids, cargo, etc.) to ensure that the vehicle's capacities are not exceeded.

Your local Fleetwood dealer is:



www.fleetwoodrv.com

*For complete info see your Fleetwood dealer. © 2004. Fleetwood Enterprises, Inc.
Printed in the USA. Inventory control number GB05F2 11/04.

