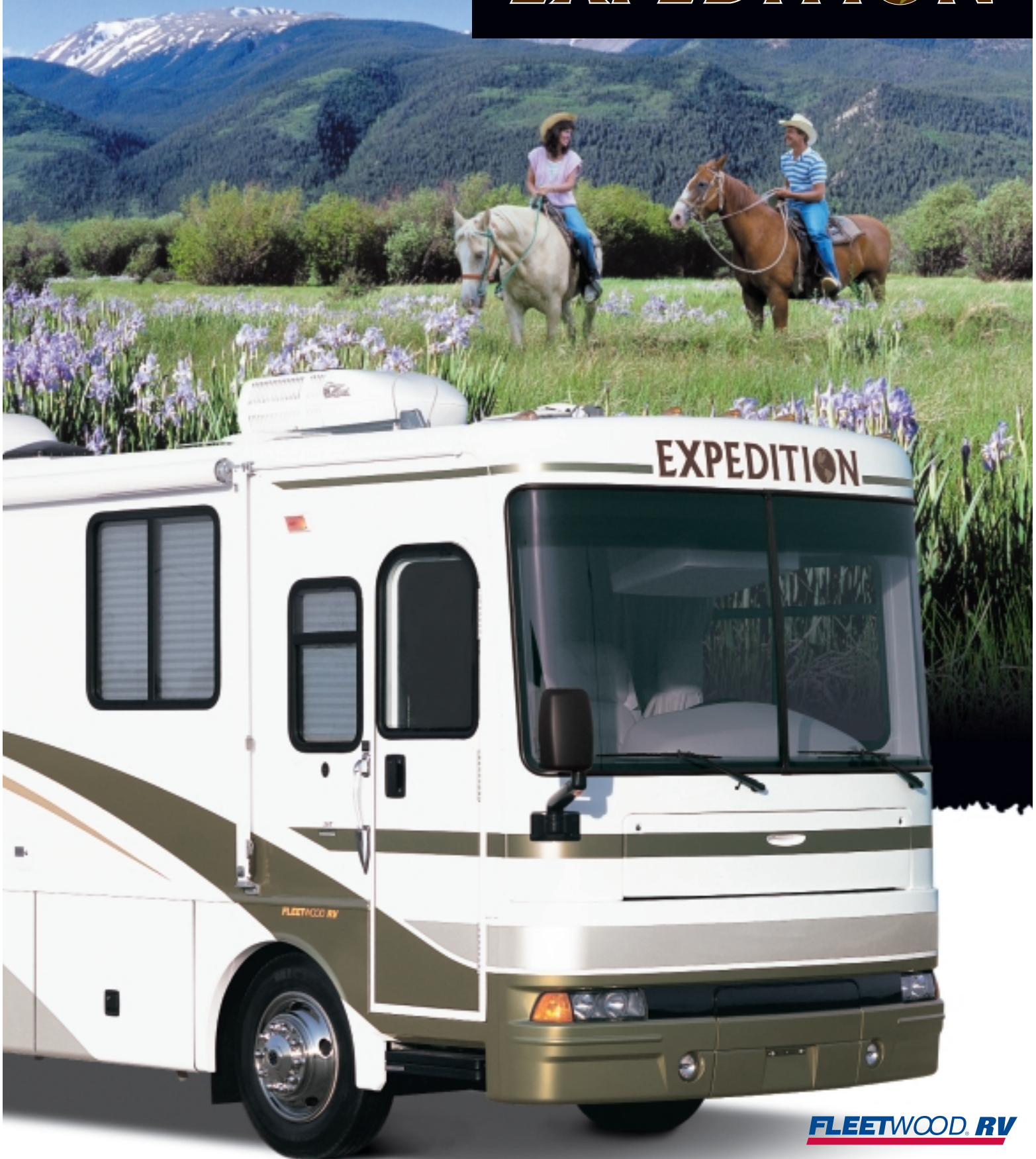


THE POSSIBILITIES  
ARE ENDLESS

2002

# EXPEDITION™



**FLEETWOOD RV**



*With the optional surround sound, you'll be the envy of every home theater enthusiast.*



*Enjoy comfortable viewing with the standard 27" Panasonic® color TV and VCR located strategically overhead.*

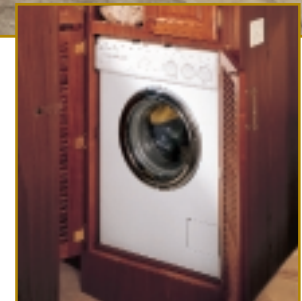


*The rotocast storage compartments are tough, durable and easy to clean.*



*Expedition's flush floor living room slide expands quickly and effortlessly to provide you with even more luxurious space to enjoy.*

*For a pleasurable driving experience, we've included a comfortable captain's chair, cruise control, a tilt and telescoping steering wheel, and multi-functional sun visors.*



*The optional washer/dryer is simply the ultimate in convenience.*

*Interior photography features Model 36T shown in Bronze Shimmer with optional Cherry wood.*

## Strike it rich in an Expedition.

When entertaining family and friends, available floor plans feature multiple slide-outs for increased space and comfort. Relax and enjoy watching your favorite shows and sports on the 27" Panasonic® TV or pop your favorite movie in the Panasonic® VCR. With Expedition, life on the road has never been so comfortable.

Your contemporary home-away-from-home has day/night pleated shades throughout, soft window treatments in the bedroom and matching valances/lambrequins in the living area. Choose from three elegant interior decors—with palettes of color and plush carpeting that blend perfectly with Expedition's unique upscale design.

After an adventurous day outdoors, a refreshing world awaits you. Settle in and prepare your favorite meals in Expedition's spacious galley. There's plenty of solid surface countertop space to spread out all your gourmet ingredients. And cook with name-brand appliances like a Magic Chef® 22" 3-burner cooktop and GE® convection/microwave—to bring out the culinary chef in you. The eye-catching wood cabinetry has stylish raised panel doors and drawers and is available in your choice of either cherry or maple wood finishes.

Since its introduction, Expedition continues to grow in popularity. Built by the world's #1 RV manufacturer, it offers refined style and elegance in an efficient, powerful and reliable diesel motor coach.



The Expedition brings exquisite style and function into the bedroom with a built-in 20" Panasonic® TV, spacious drawers and mirrored wardrobe.



Expedition's bedroom combines warm wood cabinetry and crown molding with custom fabrics and window treatments for an extra touch of elegance.

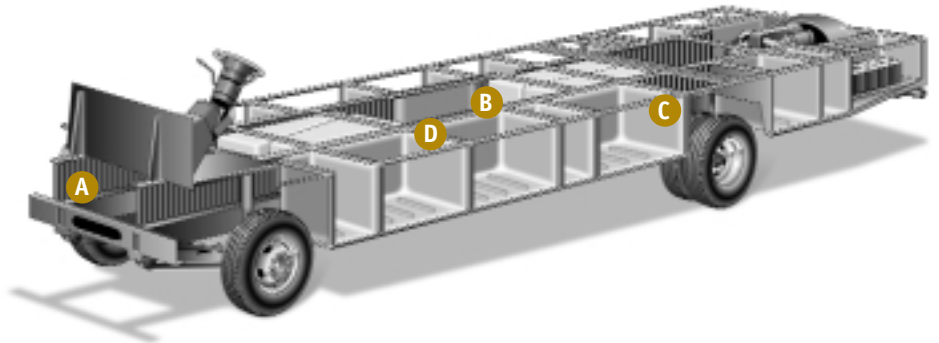
This elegant dinette is the perfect place to enjoy a meal, play a game of cards, or write a letter to family and friends.



You'll love Expedition's residential-style galley complete with a large 12 cu. ft. 4-door Norcold® refrigerator, durable solid surface countertops, and plenty of cabinets and drawers just where you need them.

## The Diesel Power Platform Makes the Difference

Expedition's quality begins long before the features come on board. We take a Freightliner® chassis with air-ride suspension, exhaust brakes and a 260 horsepower ISB Cummins engine. Then we add our patented Power Platform foundation. Stronger and more durable than ordinary designs, it lets you pack more and enjoy a hushed, smooth ride. For 2002, Expedition is also available with an optional 300 horsepower Cummins engine.



- A** Steel I-beams are welded the length of the chassis for enormous weight-bearing ability.
- B** Water tanks run horizontally down the center of the frame for balance.
- C** Beefy steel outriggers firmly cradle all exterior compartments.
- D** A neoprene rubber gasket isolates the living area from the chassis for a quieter ride.

*Drawing is for illustrative purpose only to highlight aspects of motor home construction. Actual motor home design depends on model and is subject to change.*

## 2002 Expedition Standard Features

### Apliances

- Front 27" Panasonic® TV in Overhead
- Rear 20" Panasonic® TV
- Panasonic® VCR
- Video Switch Box TV/VCR
- Smoke Detector/Alarm
- LPG Detector/Alarm
- CO Detector/Alarm
- Furnace 20M/25M BTU Dual
- 10-Gallon Quick-Recovery Water Gas/Electric Heater with D.S.I.
- 22" 3-Burner, High-Output Cooktop
- RV System Monitor Panel
- Dual High Efficiency A/C with Solar Panel on Front A/C
- Water Heater Bypass
- Inverter/Converter (1000 Watt)
- Porcelain Toilet with Water Saver
- Toilet Tank San-T-Flush™ System
- GE® Convection Microwave
- 12-cu. ft. 4-Door Norcold® Refrigerator
- Single Lever Galley Faucet
- Water Filter with Faucet
- Demand Water Pump with Filter
- Power Bath Vent
- TV Antenna
- Fan-Tastic® Power Roof Vent in Galley
- Fire Extinguisher
- Telephone Jack in Living Area and Bedroom
- Rear Speakers in Bedroom

### Body Structure

- Vacubond Lower and Upper Floors
- Vacubond Walls with Smooth High Gloss Exterior Fiberglass
- Radius Roof with Ducted Air Conditioning
- Royal Tuff-Ply™ —TPO Exterior Roof
- Aluminum Floor/Wall/Ceiling Framing

### Electrical

- Patio Receptacle
- 120V/12V AC/DC Converter Central Electric
- 120V/12V Wire Raceways
- Water Pump Switching-3 Way
- 30 amp Service
- Wall Switches
- Two 6V/Deep Cycle 218 amp House Batteries
- Prewired for Satellite Dish

### Exterior

- Full Fiberglass Front Cap
- Slide-Out Room Living Area
- Side Opening, Engine-Access Door
- Fiberglass Front and Rear Bumpers
- Fiberglass Wheel Wells
- Aerodynamic Bus Styling
- Radius Entry Door with Deadbolt Latch

### Exterior (cont.)

- Dual-Pane Slider Windows
- Utility Compartment with Exterior Washdown
- 4-point Manual Hydraulic Levelers
- Roof Ladder
- Exterior Assist Handle
- Remote/Heated Exterior Rear View Mirrors
- 20' Sewer Hose
- Park Cable Receptacle
- Awning Rail/Drip Molding (Both Sides)
- Power Entry Step
- Dual Battery Charge Control
- Porch Light (Doorside)
- Exterior Shower
- 3 Colorway Graphics to Match Decor
- Patio Awning

### Exterior Automotive

- Large, Curved Aerodynamic Windshield
- Undercoating
- Stainless Steel Wheel Simulators
- Valve Extenders
- Mud Flaps
- Underhood Utility Light
- Steel Surface on Bulkhead
- Trailer Hitch with 7-Pin Electrical Hookup\*
- Halogen Headlights
- Fog Lamps
- Rear Vision Camera
- Windshield Wipers with Wet Arm
- Freightliner® Chassis 260HP
- Air Suspension

### Exterior Storage

- Insulated Luggage Doors
- Single Paddle/Metal Latches
- One-Piece Bulb Seal
- Central Utility Compartment
- Hidden Stainless Steel Latch Rods
- Gas-Lift Strut Supports
- Lights in Compartments
- Steel Seal Frames

### Interior

- 3 Interior Decors
- Woven Jacquard Feature Fabrics
- Skylight in Tub/Shower
- Glass Shower Door with Bright Brass Frame
- Flexsteel® Furniture
- Cherry Wood Grain or Maple Wood Grain
- Wall-to-Wall Nylon Carpet-Trackless Plush
- Carpet Pad
- Vinyl Floor Covering in Galley & Bath
- Wood Drawers
- Roller Guide Drawer Slides with Transit-Ship Locks
- Radius Corner Cabinetry

### Interior (cont.)

- Large Overhead Cabinets
- Brass Cabinet Hardware
- Reclining Bucket Seats (Driver/Passenger)
- 3-Point Front Seat Belts
- Vinyl Pull-Shade in Entry
- Pleated Shades
- Bedspread with Decor Pillows
- Restonic® Pillow Top Innerspring Mattress
- Solid Surface Galley Countertops
- Crown Molding
- Headboard-Adjustable
- Beveled Mirrors
- Window Coverings (Color Coordinated to Decor)
- Solid Surface Galley Sink Cover/Cutting Board
- Solid Surface Edge Lavy Top with Porcelain Bowl
- Bright Brass Bath Accessories
- Residential Seat Styling
- Raised-Panel Cabinet Doors
- Adjustable Cabinet Shelves (Selected Cabinets)
- Large, Porcelain, Double Sink in Galley

### Interior Automotive

- Intermittent Wiper Control
- Multi-Function Sun Visor
- Driver-Side Window Shade
- Cruise Control
- Radio with Cassette AM/FM/MX Electronic Tuning
- Auxiliary Start Circuit
- Battery Disconnect System
- Auto A/C Heater Combo
- Radio Switch—Main/Auxiliary Power
- Soft Surface Automotive Dash
- Tilt/Telescoping Steering Wheel
- Driver/Passenger Captain's Chairs with Reclining Back/Slide Controls
- Solar Battery Charger
- Ceiling Ducted Roof Air Conditioning

### Interior Lighting

- Fluorescent Ceiling Lights with Dual Bulbs
- Decor Lighting
- Incandescent Lighting
- Wall Sconces
- Make-up Lights in Bath

### Platform Construction

- Power Platform Floor Configuration
- Heated Water & Holding Tank Compartments
- Polyethylene Luggage Compartment Boxes
- Paco® Beam System

### Slide-Out

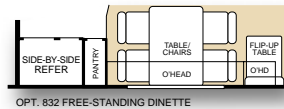
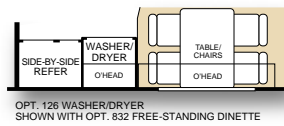
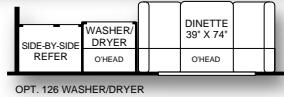
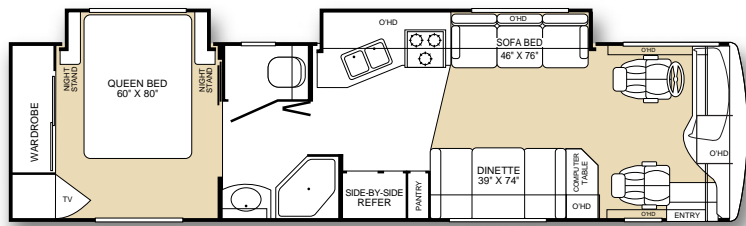
- Living Room (Dinette/Sofa)(36T)
- Wardrobe (36T)
- Galley (34M)
- Bed (34M)

\* The chassis manufacturer recommends the installation of a supplemental brake control system to activate the brakes on the vehicle or trailer you are towing.

## 2002 Expedition Floor Plans

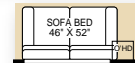
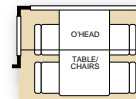
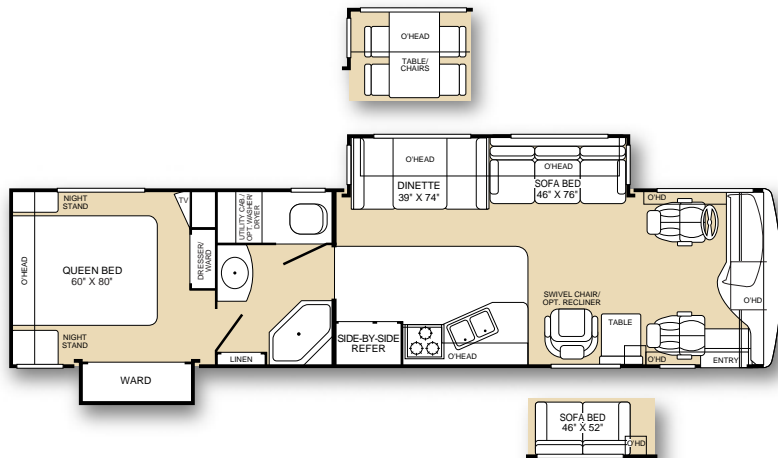
### Model 34M

- Living Room/Galley Slide-Out with Sofa Bed
- Dinette or Optional Table with Chairs
- 12-cu. ft. 4-Door Norcold® Refrigerator
- Optional Washer/Dryer
- Bedroom Slide-Out with Queen Bed
- Large Wardrobe



### Model 36T

- Living Room Slide-Out with Sofa Bed
- Dinette or Optional Table with Chairs
- Swivel Chair or Optional Recliner or Love Seat
- 12-cu. ft. 4-Door Norcold® Refrigerator
- Optional Washer/Dryer
- Island Queen Bed
- Wardrobe Slide-Out



### Standard 260HP Chassis

Frame	Freightliner XCS-Series
Engine	Cummins ISB Turbocharged, aftercooled 5.9L/260hp Electronic Diesel
Torque	550 lb/ft @ 1900 rpm
Transmission	Allison 2000 5-speed
Alternator Amps	130 Amp Delco
Tires	Michelin XRV 235/80R 22.5 LRG

### Optional 300HP Chassis

Frame	Freightliner XC-Series
Engine	Cummins ISB Turbocharged, aftercooled 5.9L/300hp Diesel
Torque	660 lb/ft @ 1600 rpm
Transmission	Allison 3000 MH, 6-speed w/Electronic Shifter
Alternator Amps	130 Amp Delco
Tires	Michelin XRV 255/80R 22.5 LRG

## 2002 Expedition Specifications

Freightliner® Chassis	34M	36T	
Engine Liters	5.9L	5.9L	
Wheelbase	208"	228"	
GVWR (lbs) (1)	23,000	23,000	
Front GAWR (lbs) (2)	9,350	9,350	
Rear GAWR (lbs) (2)	15,000	15,000	
Base Weight (lbs) (3)	TBD	20,050	
GCWR (lbs) (4)	28,000	28,000	
Hitch Rating (lbs)*	5,000	5,000	
Tongue Weight (lbs)*	500	500	
Fuel Capacity (gal)	90	90	
<b>Dimensions and Capacities</b>			
Overall Length (5)	34' 8"	36' 6"	
Overall Height (with A/C)	12' 1"	12' 1"	
Overall Width (maximum) (6)	102"	102"	
Interior Height (maximum)	79"	79"	
Interior Width (maximum)	96"	96"	
Fresh Water Holding Tank (gal)	80	80	
Grey Water Holding Tank (gal)	50	50	
Black Water Holding Tank (gal)	50	50	
Appliance LPG Tank (gal) (WC) (7)	25	25	
Generator LPG Tank (gal) (WC) (7)	30	30	
Water Heater Tank (gal)	10	10	
<b>Liquid Weight Reference</b>	Water (gal) = (8.3 lbs/3.8 kgs)	Fuel (gal) = (7.1 lbs/3.2 kgs)	LPG (gal) = (4.5 lbs/2.0 kgs)
<b>Metric Conversion</b>	Multiply pounds x 0.453 to obtain kilograms		Multiply gallons x 3.785 to obtain liters

## 2002 Expedition Options

Appliances	34M	36T
Washer/Dryer	OPT	OPT
22" 3-Burner, High-Output, Cooktop Range w/Oven	OPT	OPT
<b>Exterior Automotive</b>		
CSA Package, Freightliner®	OPT	OPT
ISB 300 HP Cummins®	OPT	OPT
<b>Interior</b>		
Love Seat	N/A	OPT
Freestanding Dinette and Chairs	OPT	OPT
Ultraleather™ Driver and Passenger Seats	OPT	OPT
Ultraleather™ Driver and Passenger Seats, Power Driver Seat	OPT	OPT
Panasonic® Home Theater Sound System	OPT	OPT
<b>Interior Automotive</b>		
DSS Manual Lift/Winegard® Satellite Dish	OPT	OPT
7.5kW Diesel Generator	OPT	OPT

- GVWR (Gross Vehicle Weight Rating): Means the maximum permissible loaded weight of the motor home. The GVWR is equal to or greater than the sum of the unloaded vehicle weight plus the net carrying capacity.*
  - GAWR (Gross Axle Weight Rating): Means the maximum permissible loaded weight a specific axle is designed to carry.*
  - Base Weight: Means the weight of the motor home without fuel, options, water, cargo or passengers.*
  - GCWR (Gross Combined Weight Rating): Means the value specified by the motor home manufacturer as the maximum allowable loaded weight of this motor home with its towed vehicle. Towing and braking capacities may differ. Refer to Fleetwood and chassis manufacturer manuals for complete information.*
  - Overall length measured from forward most body point or bumper to rear most body point or rear bumper.  
Add 8" for rear ladder.*
  - Excludes safety equipment and awnings.*
  - Tank Manufacturer's listed water capacity (WC). Actual LPG capacity is 80% of water listing as required by the safety code.*
- N/A: Not available on this specific model.*

\* The chassis manufacturer recommends the installation of a supplemental brake control system to activate the brakes on the vehicle or trailer you are towing.

**IMPORTANT — PLEASE READ:** Product information, photography and illustrations included in this publication were as accurate as possible at the time of printing. For further product information and changes, please visit our website at [www.fleetwoodrv.com](http://www.fleetwoodrv.com) or contact your local Fleetwood dealer. Prices, materials, design and specifications are subject to change without notice. All weights, fuel, liquid capacities and dimensions are approximate. Fleetwood has designed its recreational vehicles to provide a variety of uses for its customers. Each vehicle features optimal seating, sleeping, storage and fluid capacities. The user is responsible for selecting the proper combination of loads (i.e. occupants, equipment, fluids, cargo, etc.) to ensure that the vehicle's capacities are not exceeded.

## Interior and Exterior Colors

### Bronze Shimmer



Living Room/Bedroom First Coordinate

Living Room Feature

Living Room Second Coordinate

Bedroom Feature

Bedroom Second Coordinate

Drapery

Exterior Color

Fairfield (Standard)

Cherry (Optional)

### Silver Mist



Living Room/Bedroom First Coordinate

Living Room Feature

Living Room Second Coordinate

Bedroom Feature

Bedroom Second Coordinate

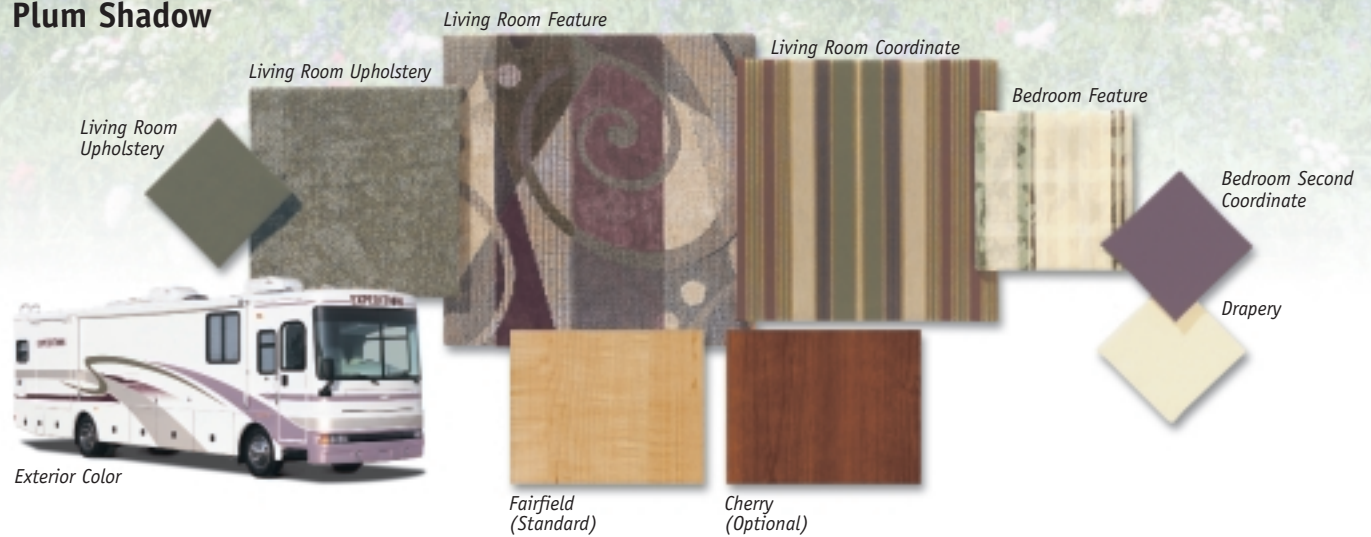
Drapery

Exterior Color

Fairfield (Standard)

Cherry (Optional)

### Plum Shadow



Living Room Upholstery

Living Room Upholstery

Living Room Feature

Living Room Coordinate

Bedroom Feature

Bedroom Second Coordinate

Drapery

Exterior Color

Fairfield (Standard)

Cherry (Optional)

**FLEETWOOD RV —  
WE MAKE DREAMS COME TRUE**

For over 50 years, we at Fleetwood have understood that people love the freedom and independence an RV provides. As a pioneer in the RV industry, Fleetwood is synonymous with outdoor recreation, and over the last half-century, we've grown to become the largest manufacturer of recreational vehicles in the world. This growth was inspired by the simple credo of Fleetwood's founder—to build great value into practical products that work hard for the consumer—a philosophy fully embraced by every Fleetwood associate to this day.

Go to any campground, state park or auto race and chances are that there will be more Fleetwood RVs present than units from any other manufacturer. Over two million vacations a year are taken in Fleetwood RVs, vacations that represent the dreams of RV owners. That's a great number of dreams to live up to. Yet, year after year, Fleetwood comes through.

That's why we remain the number one RV manufacturer in the world—we make the dreams of our customers come true.



**FLEETWOOD RV**

*The World's #1 RV Manufacturer*

©2001 Fleetwood Enterprises, Inc.  
Inventory Control Number EX02B1/1st Edition 12/01