

*face Arrow*

2 0 0 1

**FLEETWOOD.RV**

**VENTURE**  
IN STYLE



## AIM FOR COMFORT AND ADVENTURE



*Beautiful upholstered furniture and optional wood-plank flooring enhance the expansive galley and living room.*



*Extra-large galley includes a butcher cutting block that fits over the sink for easy meal preparations.*



*Eating time becomes special with comfortable swivel chairs and expandable table.*



*The coordinated colors of bed and window fabrics are as charming as the decor brass and glass lighting.*



*Integrated cabinetry in the bedroom features large dresser, optional 13" Panasonic® TV, hamper and vanity bringing exquisite style and function together.*

**ENCOUNTER RIVERS, LAKES, AND FORESTS.** You'll travel to glorious destinations in comfort with Pace Arrow's optional climate-control system that cools the entire coach quickly and quietly. And you'll also appreciate the Excel® dual-glazed slider and torque windows for better insulation.

To make your travels truly memorable, the EZ Store™ System provides lighted, exterior storage for your fishing gear, skis or golf clubs. In the galley, there are deep, roomy drawers to hold all your cooking utensils and countertops edged with the

beauty of Corian® to prepare your meals. And civilization is just a click away with a computer workstation in the dash, complete with plug-ins to access the internet and e-mail family and friends while you're on the road.\*

There are so many comforts, you'll find it easy to consider Pace Arrow, one of the original motor homes ever built, your family's second home. And with so much room, why not?

With Pace Arrow,® you'll soon develop into an adventurer and an admirer of the finer things in life.

\* Not intended for use while in transit. Unsecured items are hazardous during traveling.

Excel® is a registered trademark of Atwood Mobile Products • EZ Store™ is a trademark of Fleetwood Enterprises, Inc. • Corian® is a registered trademark of DuPont of the United States.



*Pace Arrow*

2 0 0 1

**FLEETWOOD® RV**

**TAKE ALONG A TRUSTED COMPANION.  
PACE ARROW®, AN AMERICAN ORIGINAL SINCE 1969.**

The legendary Pace Arrow® motor home is known for its continuous quest for quality, style and comfort.

From its appealing design to several floor plans and fabulous features, the Pace Arrow reflects your lifestyle. Consider the expanded living room and bedroom slide-outs as well as an abundance of storage capacity both inside and out. There's plenty of fresh water capacity for the freedom of extended, dry camping. When you're ready to relax and kick off your shoes, view your favorite videos or TV shows on the 20" Panasonic® TV.

Getting hungry? The galley's got everything you need to take care of even the biggest of appetites—a Dometic® double-door refrigerator with 8 cu. ft. to fill with your favorite fixings, a Magic Chef® oven and range, and also an optional Sharp® Carousel Convection Microwave that even grills.

From day one, when Fleetwood RV began building the Pace Arrow, it has enchanted thousands of travelers. So, if you're an experienced RV'er or even a first timer, you'll know exactly why Pace Arrow should be yours.



Panasonic® is a registered trademark of Matsushita Electric Corporation of America • Dometic® is a registered trademark of AB Electrolux.  
Magic Chef® is a registered trademark of Maytag • Sharp® is a registered trademark of Sharp Electronics.

*Pace Arrow*

## PACE ARROW FEATURES FOR 2001

Our engineering may set us apart from the rest, but the things you'll notice most when you and your family take a trip, are the top-of-the-line features. Here are but a few of the items that make life on the road with Pace Arrow memorable.



Front entertainment center with 20" Panasonic® color TV and optional VCR are just some of the many Pace Arrow features.



An optional electronic climate control system, with dual A/C controls, enables a separate climate in the front and rear of the coach.



Every Pace Arrow comes prewired for an optional Winegard® satellite dish.



Fill Pace Arrow up on either side of the pump with a rear fuel-fill location, especially convenient when towing a vehicle.

Carpeted storage compartments are non-corrosive to prevent rusting.

A coach-length, aluminum drip rail prevents discoloring of the sidewall.

Practical, single die-cast metal paddle latches are flush-mounted for a luggage door system that's durable and easy-to-operate.

Anti-wicking process, on all of Pace Arrow's openings and windows, includes multiple seals for prevention of leaks and moisture buildup.

Our swing-down engine access door makes it easy to check Pace Arrow's fluid levels and electrical panel.



Pace Arrow's optional 5.5kW Onan® generator provides 110V service and comes with a 3-year warranty.



Optional washer and dryer make life on the road even more convenient. (Optional on 37K & 37S)



Our EZ Store™ Storage System was developed using a rack and pinion system to give you the utmost ease in accessing your stored gear below.



## APPLIANCES

- Front 20" Panasonic® TV in Overhead
- Smoke Detector/Alarm
- LPG Leak Detector/Alarm
- CO Detector/Alarm
- 6-Gallon, Quick-Recovery Water Heater with D.S.I.
- 22" 3-Burner, High-Output Cooktop with Oven
- Light/Power Range Hood
- Folding Range Cover
- Water Heater Bypass
- Porcelain Toilet with Water Saver
- Toilet Tank San-T-Flush™ System
- 1-cu. ft. Sharp® Microwave
- 8-cu. ft. Dometic® Double-Door Refrigerator
- Single-Lever Galley Faucet
- Water Filter with Faucet
- Demand Water Pump with Filter
- Power Bath Vent
- Fan-Tastic® Power Roof Vent in Galley
- Fire Extinguisher
- Telephone Jack in Dash and Bedroom
- Rear Speakers in Bedroom
- A/C Ready
- Monitor Panel

## BODY STRUCTURE

- Vacubond Upper/Lower Floor
- Vacubond Walls with Smooth Exterior Fiberglass
- Radiused Roof with Ducted A/C—Flat Interior Ceiling
- Rubber Roof
- Steel Floor/Wall/Ceiling Framing
- Power Platform II

## ELECTRICAL

- Patio Receptacle
- 120V/12V AC/DC Converter Central Electrical Panel
- 120V/12V Wire Raceways
- 3-Way Water Pump Switch
- 30-amp Service
- Wall Switches
- Dual 6V/Deep Cycle 218-amp House Batteries
- VCR Ready

## EXTERIOR

- Full Fiberglass Front/Rear Cap
- Swing-Down Engine Access Door
- Fiberglass Front Quarter Panels
- Fiberglass Rear Wheel Well Trim
- Aerodynamic Bus Styling
- Radius Entry Door with Deadbolt Latch
- Dual-Pane Windows Throughout
- Fiberglass Front Grille
- Pace Arrow Logo Badging

## EXTERIOR (CONT.)

- Utility Compartment with Exterior Shower
- 4-Point Manual Hydraulic Levelers (Standard on Slide-Out Models)
- Roof Ladder
- Exterior Assist Handle
- Heated Remote Rear View Mirrors
- 20' Sewer Hose
- Park Cable Receptacle
- Awning Rail/Drip Molding (Both Sides)
- Power Entry Step
- Dual Battery Charge Control
- Under-Floor Spare Tire
- Porch Light
- 3 Colorway Graphics to Match Decor
- Lower Body Accent Paint

## EXTERIOR AUTOMOTIVE

- Large Curved Aerodynamic Windshield
- Undercoating
- Stainless Steel Wheel Simulators
- Underhood Utility Light
- Steel Surface on Bulkhead
- Trailer Hitch with 7-Point Electrical Hook-Up
- Large Single Headlamps with Turn Signal
- Driving Lights
- Rear Vision Camera
- Single-Motor Windshield Wipers with Wet Arm

## EXTERIOR STORAGE

- Insulated Luggage Doors—Fiberglass with Aluminum Frame
- Single-Paddle/Metal Latches
- Continuous One-Piece Bulb Seal
- Hidden, Stainless Steel Latch Rods
- Lighted Compartments
- Carpeted Luggage Compartment/Fiberglass in EZ Store™
- Pass-Through Storage
- Steel Seal Frames

## INTERIOR

- 3 Interior Decors
- Velvet Feature Fabrics
- Skylight in Tub/Shower
- Oak Wood Grain
- Wall-to-Wall Nylon Carpet with Carpet Pad
- Vinyl Floor Covering—Galley & Bath
- Wood Drawers
- Roller Guide Drawer Slides with Transit Ship Locks
- Radius Corner Cabinetry
- Brass-Finished Cabinet Hardware
- Bedsprad with Decor Pillows
- Restonic® Innerspring Mattress
- Oak Cabinet Doors & Drawers
- Crown Molding in Bedroom

## INTERIOR (CONT.)

- Headboard (Selected Models)
- Beveled Mirrors
- Slide-Out Dinette Bins with Locks
- Color-Coordinated Window Coverings
- Oak Bath Door Trims
- Corian® Edge Countertops in Galley
- Wood Trim Table Tops
- Trash Basket in Galley
- Molded ABS Tub/Shower with One-Piece Enclosure
- Bright Brass Bath Accessories
- Residential Seat Styling
- Entry Rail (Oak & Brass)
- Oak Raised Panel Cabinet Doors
- Adjustable Cabinet Shelves (Selected Cabinets)
- Sink Cutting Board
- Frame and Panel Divider Doors
- Large, Double Stainless Steel Sink
- CSA-Sofa Lock

## INTERIOR AUTOMOTIVE

- Intermittent Wiper Control
- Double-Swivel Sun Visors with Map Pockets
- Engine Cover Convenience Tray
- Cruise Control
- Low-Profile Engine Cover
- Radio with Cassette AM/FM/MX Electronic Tuning
- Soft-Surface Automotive Dash
- Computer Workstation in Dash
- Driver/Passenger Side Panels with Magazine Rack
- Tilt Steering Wheel
- Tilt-Up Instrument Panel
- Battery Disconnect System
- Auto A/C Heater Combo
- Radio Switch—Main/Auxiliary
- Driver/Passenger Captain's Chairs with Reclining Back/Slide Controls
- 3-Point Seat Belts on Driver/Passenger Seats

## INTERIOR LIGHTING

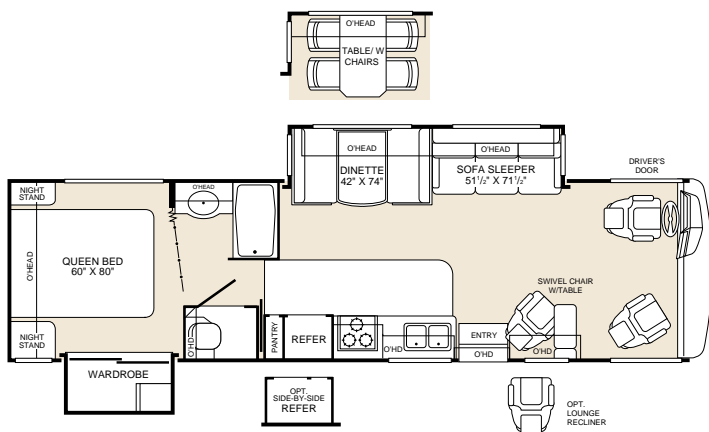
- Wardrobe Lighting
- Fluorescent Ceiling with Dual Bulb
- Decor Lighting
- Incandescent Lighting
- Make-Up Lights in Bath

## PLATFORM CONSTRUCTION

- Basement Floor Configuration
- Heated Water & Holding Tank Compartments
- Polyethylene Luggage Compartment Boxes (Some Locations)
- Steel Truss System
- Steel Outriggers

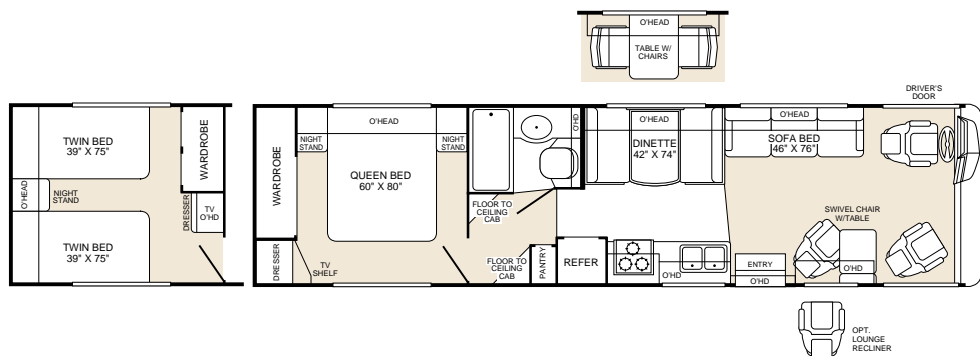
### MODEL 33V

- Island Queen Bed
- Wardrobe Slide-Out
- Private Toilet
- Dinette or Optional Table with Chairs
- Optional Side-by-Side Refrigerator
- Living Room Slide-Out with Sofa Sleeper
- Swivel Chair with Table or Optional Lounge Recliner



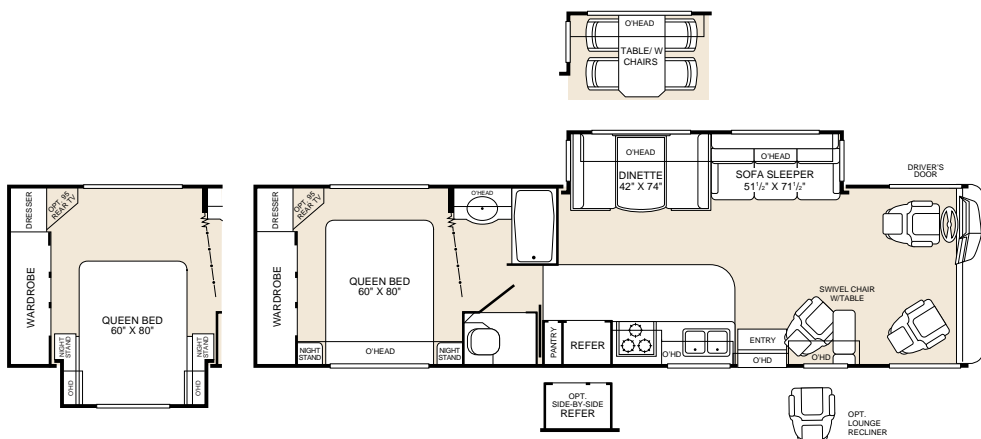
### MODEL 35J

- Island Queen Bed
- Large Wardrobe
- Optional Twin Beds
- Dinette or Optional Table with Chairs
- Fully Enclosed Bathroom
- Sofa Bed
- Swivel Chair with Table or Optional Lounge Recliner



### MODEL 35N

- Island Queen Bed
- Large Wardrobe and Dresser
- Optional Bedroom Slide-Out
- Private Toilet
- Dinette or Optional Table with Chairs
- Optional Side-by-Side Refrigerator
- Living Room Slide-Out with Sofa Sleeper
- Swivel Chair with Table or Optional Lounge Recliner

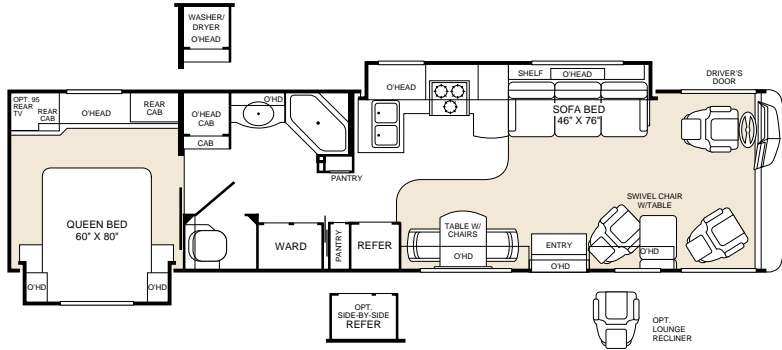


**MODEL**  
**37K**

- Bedroom Slide-Out with Island Queen Bed
- Bedroom Feature Cabinets with Integrated Vanity

- Optional Side-by-Side Refrigerator
- Optional Washer/Dryer
- Private Toilet

- Galley/Living Room Slide-Out with Sofa Bed
- Swivel Chair with Table or Optional Lounge Recliner
- Table with Chairs

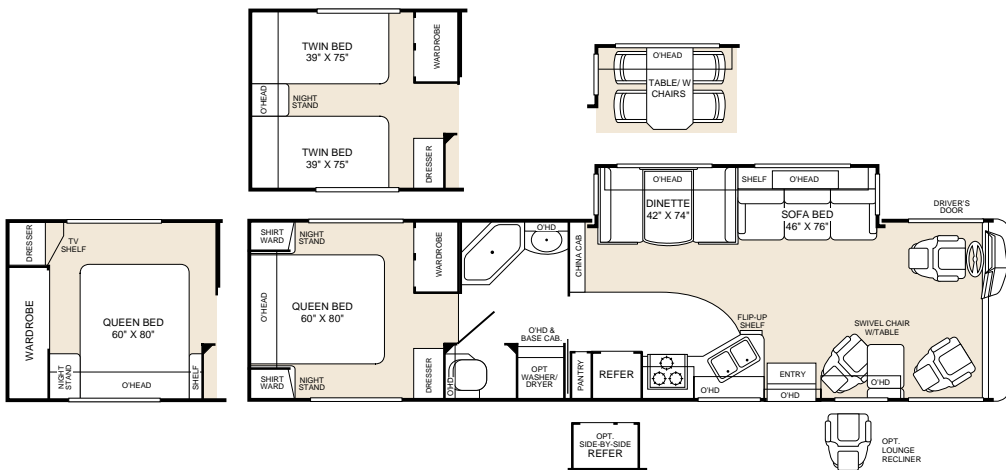


**MODEL**  
**37S**

- Choice of 3 Bedroom Configurations
- Large Wardrobe and Dresser
- Private Toilet

- Dinette or Optional Table with Chairs
- Optional Side-by-Side Refrigerator
- Optional Washer/Dryer

- Living Room Slide-Out with Sofa Bed
- Swivel Chair with Table or Optional Lounge Recliner
- China Cabinet



APPLIANCES	33V	35J	35N	37K	37S
Sharp® Convection Microwave	Opt	Opt	Opt	Opt	Opt
Furnace 20M BTU/34M BTU Dual	N/A	N/A	N/A	Std	Std
hydroflame® Furnace 34M BTU	Std	Std	Std	N/A	N/A
Electronic Climate Control w/Dual A/C & Solar Battery Charger	Opt	Opt	Opt	Opt	Opt
Compact Disc Player	Opt	Opt	Opt	Opt	Opt
Rear 13" Panasonic® Television with Remote	Opt	Opt	Opt	Opt	Opt
VCR/VHS	Opt	Opt	Opt	Opt	Opt
Washer/Dryer	N/A	N/A	N/A	Opt	Opt
12 cu. ft. Side-by-Side Dometic® Refrigerator with Ice Maker	Opt	N/A	Opt	Opt	Opt
Sharp® CSA Convection Microwave	Opt	Opt	Opt	Opt	Opt
DSS Manual Lift/Satellite Dish	Opt	Opt	Opt	Opt	Opt
Dual Roof High Efficiency A/C with Solar Panel	Opt	Opt	Opt	Opt	Opt
ELECTRICAL	33V	35J	35N	37K	37S
4.0kW Generator—Onan® Microlite	Opt	Opt	Opt	Opt	Opt
5.5kW Generator—Onan® Dual A/C Ready	Opt	Opt	Opt	Opt	Opt
7.0kW Generator—Onan® Dual A/C Ready	Opt	Opt	Opt	Opt	Opt
CSA Package—Ford®	Opt	Opt	Opt	Opt	Opt
EXTERIOR	33V	35J	35N	37K	37S
Awning - USA	Opt	Opt	Opt	Opt	Opt
4-Point Manual Hydraulic Levelers—Ford®	Std	Opt	Std	Std	Std
EXTERIOR AUTOMOTIVE	33V	35J	35N	37K	37S
Ford® Chassis 6.8L Engine	Opt	Opt	Opt	Opt	Opt
INTERIOR	33V	35J	35N	37K	37S
Glass Shower Door with Bright Brass Frame	Std	N/A	Std	Std	Std
Shower Curtain	N/A	Std	N/A	N/A	N/A
Lounge Recliner	Opt	Opt	Opt	Opt	Opt
Coffee Table	Opt	N/A	Opt	Opt	Opt
Plank Wood Flooring in Galley	Opt	Opt	Opt	Opt	Opt
Dinette Table with Chairs	Opt	Opt	Opt	Std	Opt
INTERIOR AUTOMOTIVE	33V	35J	35N	37K	37S
Stereo AM/FM with CD Player	Opt	Opt	Opt	Opt	Opt
Dash Fans	Opt	Opt	Opt	Opt	Opt
CB Radio Ready	Opt	Opt	Opt	Opt	Opt
Leather Driver/Passenger Seats	Opt	Opt	Opt	Opt	Opt
SLIDE-OUT	33V	35J	35N	37K	37S
Living Room—Dinette/Sofa	Std	N/A	Std	N/A	Std
Bedroom Wardrobe—Closet/Organizer	Std	N/A	N/A	N/A	N/A
Free-Standing Dinette & Chairs	Opt	N/A	Opt	N/A	Opt
Galley/Sofa	N/A	N/A	N/A	Std	N/A
Bedroom	N/A	N/A	Opt	Std	N/A

**IMPORTANT – PLEASE READ:** Product information and photography included in this brochure were as accurate as possible at the time of publication. For the most current product information and changes, please visit our website at [www.fleetwood.com](http://www.fleetwood.com) or contact your local Fleetwood dealer. Subsequent refinements may be evident in the actual product. Prices and specifications are subject to change without notice. All weights, fuel, liquid capacities and dimensions are approximate. Fleetwood has designed its recreational vehicles to provide a variety of uses for its customers. Each vehicle features optimal seating, sleeping, storage and fluid capacities. The user is responsible for selecting the proper combination of loads to ensure that the recreational vehicle's capacities are not exceeded.

Ford® is a registered trademark of the Ford Motor Company • Flexsteel® is a registered trademark of Flexsteel • TuffPEX™ is a trademark of Uponor.

## WHAT HAPPENS WHEN YOU'VE BEEN SETTING THE STANDARDS OF MOTOR HOME QUALITY FOR OVER 50 YEARS?

**You set them even higher. Our customers expect us to.** As a matter of fact, first-time RV buyers, who bought other manufacturers' RVs, tell us they wish they'd spent a little bit more for better quality. That's why experienced buyers are more likely to buy a Fleetwood RV.\* That's also why Fleetwood RV invests in people, systems and manufacturing quality that are second to none. This may make us a bit more expensive than some brands, but satisfied Fleetwood RV owners know we're worth it.

**People...** We hire engineers, designers and drafters from leading automotive design schools. Our front-line associates are well-trained, quality-minded men and women who take pride in their work. No other manufacturer has a larger, more professional team behind their products.



**Systems...** Our product development team uses state-of-the-art, computer-assisted-design (CAD)

technology to build in fit and finish right from the drawing board. Each product is meticulously documented with over 3,500 pages of engineering drawings. A computerized bill of materials details over 20,000 pieces that go into your motor home. And, a vehicle specific *Electronic Parts Catalog* shows 600–800 common parts... so, if you need a new part, your authorized Fleetwood RV service dealership knows exactly what you need. Some manufacturers may not invest the extra time and money to accurately document their products, which could cost you plenty in headaches and hassles down the road.

\*Angus Reid RV Market Segmentation Study, 1998



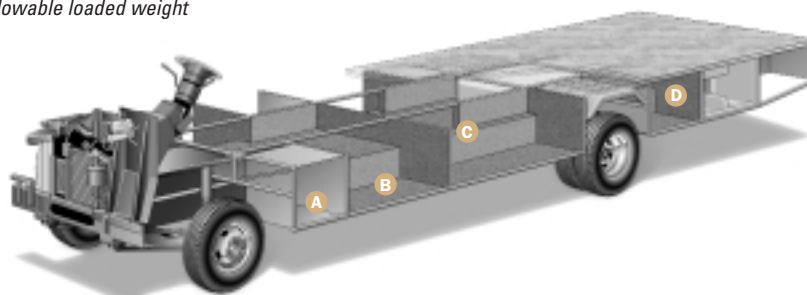
FORD® CHASSIS	33V	35J	35N	37K	37S
Engine LD	6.8L	6.8L	6.8L	6.8L	6.8L
Wheelbase	208"	208"	208"	228"	228"
GVWR lbs/kgs (1)	20,500/9,299	20,500/9,299	20,500/9,299	20,500/9,299	20,500/9,299
Front GAWR lbs/kgs (2)	7,000/3,175	7,000/3,175	7,000/3,175	7,000/3,175	7,000/3,175
Rear GAWR lbs/kgs (2)	13,500/6,123	13,500/6,123	13,500/6,123	13,500/6,123	13,500/6,123
Base Weight lbs/kgs (3)	15,250/6,915	14,800/6,713	15,300/6,940	16,580/7,497	15,800/7,270
GCWR lbs/kgs (4)	25,500/11,567	25,500/11,567	25,500/11,567	25,500/11,567	25,500/11,567
Hitch Rating/Tongue Weight lbs	5,000/500	5,000/500	5,000/500	5,000/500	5,000/500
Hitch Rating/Tongue Weight kgs	2,268/227	2,268/227	2,268/227	2,268/227	2,268/227
Fuel Capacity gal/lbs (6.1 lbs/gal)	75/450	75/450	75/450	75/450	75/450
DIMENSIONS	33V	35J	35N	37K	37S
Length (5)	33' 8"	35' 8"	35' 2"	37' 8"	37' 8"
Height	11' 9"	11' 9"	11' 9"	11' 9"	11' 9"
Width (maximum) (6)	102"	102"	102"	102"	102"
Interior Height (maximum)	79"	79"	79"	79"	79"
Interior Width (maximum)	96"	96"	96"	96"	96"
LIQUID CAPACITIES (GALLONS/LITERS)	33V	35J	35N	37K	37S
Fresh Water Holding Tank (8.3 lbs/gal)	80/302	80/302	80/302	80/302	80/302
Grey Water Holding Tank (8.3 lbs/gal)	50/189	50/189	50/189	50/189	50/189
Black Water Holding Tank (8.3 lbs/gal)	50/189	50/189	50/189	50/189	50/189
Appliance LPG Tank (4.5 lbs/gal) (WC) (7)	25/95	25/95	25/95	25/95	25/95
Water Heater Tank (8.3 lbs/gal)	6/23	6/23	6/23	6/23	6/23

1. GVWR (Gross Vehicle Weight Rating): Means the maximum permissible loaded weight of the motor home. The GVWR is equal to or greater than the sum of the unloaded vehicle weight plus the net carrying capacity.
2. GAWR (Gross Axle Weight Rating): Means the maximum permissible loaded weight a specific axle is designed to carry.
3. BW (Base Weight): Means the weight of the motor home without fuel, options, water, cargo or passengers.
4. GCWR (Gross Combined Weight Rating): Means the value specified by the motor home manufacturer as the maximum allowable loaded weight

(4 cont.) of this motor home with its towed vehicle. Towing and braking capacities may differ. Refer to Fleetwood and chassis manufacturer manuals for complete information.

5. Length taken from front bumper to rear bumper.
6. Excludes safety equipment and awnings.
7. Tank Manufacturer's listed water capacity (WC). Actual LPG capacity is 80% of water listing as required by the safety code.

**Pace Arrow's Power Platform II is a unique truss design welded together using tubular steel that's durable, strong and dependable. The result is a quiet and nearly flawless ride, increased floor strength, and substantially more storage space below. An all-steel foundation further reduces stress loads on the sidewalls and minimizes chassis flex on uneven roads.**



**A** Easy access compartments let you get to Pace Arrow's batteries.

**B** All exterior compartments are reinforced with substantial steel outriggers for increased durability and years of cargo carrying.

**C** Full basement construction maximizes space beneath the floor, encloses the heated water and holding tank compartments and provides easy-to-reach, pass-through storage.

**D** The floor is a vacuum-bonded composite of steel tubing, foam insulation, and marine-grade plywood cut to our exact specs for lightweight strength and resistance to moisture.

Drawing for illustrative purpose only to highlight aspects of motor home construction. Actual motor home design depends on model and is subject to change.

**Manufacturing...** We only do what we know we're best at—building a quality-finished motor home. When it comes to the appliances, doors, windows, and furniture, we partner with other recognized leaders to do what they know best... top names like Sharp®; Panasonic®; Dometic®; Restonic® and Flexsteel®. Some manufacturers will tell you partnering like this makes us final assemblers. We call it working smarter to bring you more value.



**We build our cabinets and secure them to the floor before the walls go up to add strength, and help eliminate noises.**

**Quality...** The quality outside reflects the quality inside—places where you can't see it, but where it really counts. For example, we use vacubonded sidewall construction that's required for the special needs of a motor home. Windshield bonded to metal on most models. Our new TuffPEX™ plumbing system is able to withstand temperatures as low as -40° F. And now offered on our mid to high-end Class A motor homes, a new, revolutionary exterior sidewall material which contains no wood products to guard against swelling, rotting and delamination. Before any unit rolls off the line at each of our plants, it goes through a documented checklist containing hundreds of items specific to that product. It won't

leave the plant until it has met our high standards. And, the list goes on.

**For strength, noise reduction and insulation, composite sidewalls and floors are constructed of steel, plywood and polystyrene foam.**



From the drawing board to the assembly line, we will continue to develop and manufacture quality products for our customers.

**Fleetwood RV...** Setting standards beyond your expectations.



## FLEETWOOD'S FAR-REACHING WARRANTY AND SERVICE PROGRAM



### LIMITED ONE-YEAR/ THREE-YEAR WARRANTY

Leaving the Fleetwood dealership after you've purchased your RV doesn't mean leaving each dealer's commitment to your satisfaction behind.

OWNERCARE, Fleetwood's extensive warranty and service program, provides one/three year(s) of dedicated customer satisfaction. OWNERCARE stands out as one of the RV industry's most comprehensive programs and includes systems and applications, construction, no deductible and no service charge. See your nearest Fleetwood dealer for a full explanation of benefits and restrictions.

### FULLY TRANSFERABLE

At Fleetwood RV, we're confident in our products and don't hesitate to stand behind them. Your newly purchased Fleetwood RV comes with one of the industry's most comprehensive warranties, fully transferable for the first 12 months.

### NATIONAL COVERAGE

Have a question about your new Fleetwood RV? We've got it covered. The nation's largest trained dealer network—ready, willing and able to provide you with the services you need to make every moment of owning your RV enjoyable. Over 1,100 Fleetwood dealers throughout the U.S. and Canada are available to you. With national coverage, peace of mind and complete satisfaction are just a phone call away.



### AN EXTRA THANK YOU

Ask your dealer about your Thousand Trails complimentary 30-day membership certificate. It's your chance to get going in your new RV and enjoy some scenic camping, plus our way of thanking you again for your purchase of a Fleetwood RV. For more information on your complimentary membership certificate, please call 1-800-205-0606.

Happy (Thousand) Trails!



## FLEETWOOD RV AND MOTOR SPORTS: A WINNING TEAM



Three wide in the first turn. 200 miles per hour on the back straight. Passing for the lead through the short chute. Nothing beats the excitement of NASCAR racing. Every year thousands of NASCAR

fans and Fleetwood RV owners travel to races to support their favorite drivers, enjoy time with family and rekindle friendships.

RVs have become as much a part of motorsports as pit row and the checkered flag. That's why Fleetwood RV is a proud sponsor of 1999 Winston Cup Champion Dale Jarrett and the Robert Yates Racing Team.

As the number one RV manufacturer\* in the country, our winning ways continue. Fleetwood RV is now the "Official Recreational Vehicle" at nine

\*According to Statistical Surveys Jan. '99-Dec. '99

International Speedway Corporation racetracks.\*\* And for Fleetwood owners, emergency service crews are available at select tracks to ensure a trouble-free weekend. While you're enjoying the race, be sure to look for the Fleetwood RV Prize Patrol and go home with some exciting giveaways.

So this weekend, pack up your friends and family and experience the thrill of cheering on Dale firsthand, in first-class style, with Fleetwood RV.

\*\* Daytona International Speedway, Darlington Raceway, Talladega Superspeedway, California Speedway, Richmond International Speedway, Michigan Speedway, Watkins Glen International Speedway, Phoenix International Raceway, Homestead-Miami Speedway.



[www.fleetwood.com](http://www.fleetwood.com)

Visit our website to find a dealer near you, learn more about other Fleetwood products or purchase Fleetwood branded apparel. Or call 1-800-444-4905.

FOR CUSTOMER ASSISTANCE, call toll free 24 hours a day at 1-800-322-8216, visit our website, or you may write to Fleetwood Enterprises, Inc., P.O. Box 7638, Riverside, CA 92513-7638.

**IMPORTANT—PLEASE READ:** Product information and photography included in this brochure were as accurate as possible at the time of publication. For the most current product information and changes, please visit our website at [www.fleetwood.com](http://www.fleetwood.com) or contact your local Fleetwood dealer. Subsequent refinements may be evident in the actual product. Prices and specifications are subject to change without notice. All weights, fuel, liquid capacities and dimensions are approximate. Fleetwood has designed its recreational vehicles to provide a variety of uses for its customers. Each vehicle features optimal seating, sleeping, storage and fluid capacities. The user is responsible for selecting the proper combination of loads to ensure that the recreational vehicle's capacities are not exceeded.

**FLEETWOOD RV**

*America's Favorite Recreational Vehicles*

Fleetwood Enterprises, Inc., RV Marketing, P.O. Box 7638, Riverside, CA 92513-7638

Your local Fleetwood RV dealer is:



This award certifies that Fleetwood has met Ford's rigid quality standards for utilizing a Ford chassis.

## 2001 PACE ARROW INTERIOR FABRICS

**Your motor home takes you to new adventures every day.** And since this home will be an enduring part of your life, we offer a selection of colors and textures that are a fine blend of classic and contemporary style. We search to obtain quality fabrics that are elegant, yet durable, to keep up with your active lifestyle. Year after year, the look will be as welcoming to you as it is to your guests.

### WOODLAND BIRCH



### SHADOWBLUE MIST



### FROSTED LIMESTONE





## FLEETWOOD FAMILY FUN... THE JOURNEY CONTINUES

Where do you want to be? The possibilities are almost limitless. From mini motor homes to luxury coaches, from gas to diesel performance, there's a Fleetwood motor home to fulfill your dreams.

We know exactly how you feel, realizing there's a whole new world to experience. That's why we made sure you can choose from the broadest selection of brands and floor plans the world has to offer. It's no wonder that one out of four motor homes sold is a Fleetwood.\*

This is your journey. Take it for a spin.

\*According to Statistical Surveys Jan.'99–Dec.'99

**FLEETWOOD® RV**

© 2000 Fleetwood Enterprises, Inc.  
Inventory Control Number PA01B1/1st Edition 7/00

