



Boulder Diesel 2000: Pushing the competition to the limit.

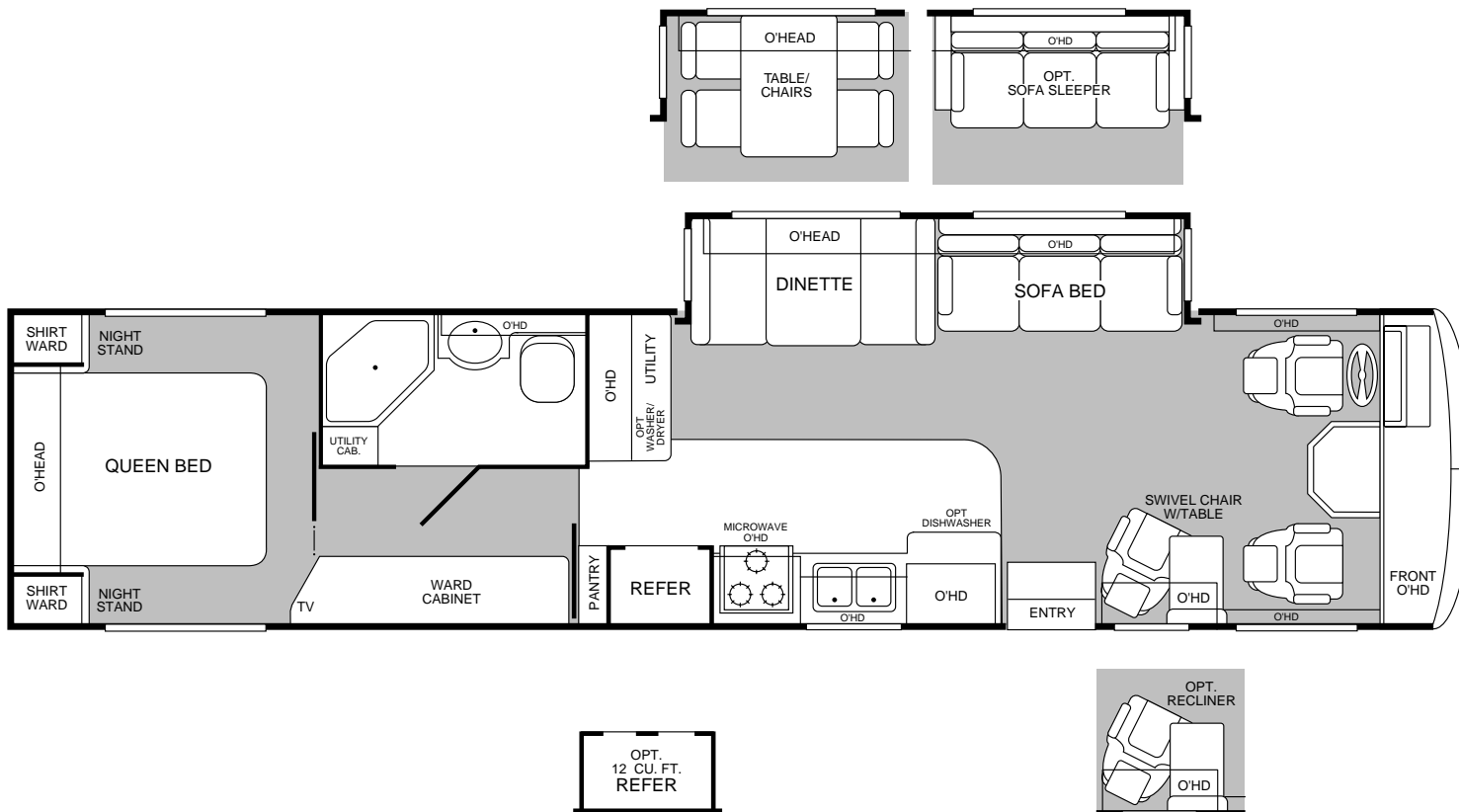
For most diesel motor home enthusiasts there's one pre-purchase consideration that takes top priority over every other: will my coach give me the kind of performance and economy I want and need? If the coach is the new Boulder Diesel, then in a word, yes. We'll stake our name and the Boulder reputation for fun, function, and value on it. With all the power and reliability provided by a 275-HP Cummins® diesel engine and the overwhelming choice of nearly 90% of all diesel RV owners, this Boulder was built to run with the best of the diesel pusher market. Our designers and technical engineers anticipated the kind of use you have in mind for your Boulder Diesel and just how high your expectations are. So they created an exceptionally functional motor home that was built to be used and enjoyed—in every way, all across this country, and in just about any weather condition you'll encounter. Boulder Diesel is ready to "push" ahead full time. Are you?

2000 Bounder Diesel Floor Plans



MODEL 36S

- DINETTE/Sofa Sleeper Slide-Out
- Optional Free-Standing Dinette
- Swivel Chair with Table
- Optional Recliner
- Optional 12 cu.ft. Dometic® Refrigerator
- Optional Washer/Dryer
- Queen Bed with Nightstands
- Private Toilet
- 20" Panasonic® Television in Rear
- 20" Panasonic® TV/VCR in Front Overhead



MODEL 39Z

- *Dinette/Sofa Bed Slide-Out*
- *Swivel Chair with Table*
- *Optional Free-Standing Dinette*
- *Optional Sofa Sleeper*
- *Optional Recliner*
- *Optional 12 cu.ft. Dometic® Refrigerator*
- *Optional Dishwasher*
- *Optional Washer/Dryer with Slatted Hideaway Doors*
- *Fully Enclosed Bathroom*
- *20" Panasonic® Television in Rear*
- *20" Panasonic® TV/VCR in Front Overhead*

2000 Bounder Diesel Standard Features

EXTERIOR

Full Fiberglass Front Cap
Side Opening Engine Access Door
Fiberglass Front and Rear Bumpers
Fiberglass Wheel Trims
Aerodynamic Styling
Radius Entry Door with Deadbolt Latch
Dual Pane Slider Windows Throughout
Bounder Diesel Logo Badging
Utility Compartment
4-Pt. Manual Hydraulic Levelers
Roof Ladder
Dual Location Fuel Fill
Exterior Assist Handle
Heated Remote Rear View Mirror
20' Sewer Hose
Park Cable Receptacle
Awning Rail/Drip Molding (Both Sides)
Power Entry Step
Dual Battery Charge Control
Porch Light
25' Water Hose
Exterior Shower
3 Colorway Graphics to Match Decor
Lower Body Accent Paint

EXTERIOR AUTOMOTIVE

Large Curved Aerodynamic Windshield
Undercoating
Stainless Steel Wheel Simulators
Valve Extenders
Mud Flaps
Underhood Utility Light
Steel Surface on Bulkhead
Trailer Hitch with 7 Pin Electrical Hook-up
Halogen Head Lights
Fog Lights
Rear Camera Ready
Windshield Wipers with Wet Arm

INTERIOR AUTOMOTIVE

Intermittent Wiper Control
Multi-Function Sun Visor
Cruise Control
Radio with Cassette AM/FM/MX—Electronic Tuning
Auxiliary Start Circuit
Battery Disconnect System
Auto A/C Heater Combo
Radio Switch—Main/Auxiliary
Soft Surface Automotive Dash
Driver/Passenger Side Panel
Tilt/Telescoping Steering Wheel
Tilt-Up Instrument Panel
Driver/Passenger Captain's Chairs with Reclining Back/Slide Controls
Dash Fans
Solar Battery Charger
Ducted Roof Air Conditioning
3-Point Seat Belts on Driver/Passenger Seats

INTERIOR

3 Interior Decors
Jacquard Feature Fabrics
Skylight in Tub/Shower
Glass Shower Door with Bright Brass Frame
Flexsteel® Furniture
Oak Wood Grain
Wall to Wall Nylon Carpet with Carpet Pad
Vinyl Floor Covering—Galley/Bath
Wood Drawers
Roller Guide Drawer Slides with Transit Ship Locks
Radius Corner Cabinetry
Large Overhead Cabinets with Adjustable Shelves
Brass Cabinet Hardware
Vinyl Pull Shades in Entry
Wood Mini Blinds
Bedsprad with Decor Pillows
Innerspring Mattress
Oak Cabinet Doors & Drawers
Corian® Galley Countertops
Crown Molding in Bedroom
Headboard
Beveled Mirrors
Window Coverings—Color Coordinated to Decor
Wainscot Paneling in Bedroom
Wood Trim Table Tops
Solid Surface Sink Cover
Solid Surface Edge Lavy Top with Porcelain Bowl
Molded Tub/Shower with One Piece Fiberglass Enclosure
Bright Brass Bath Accessories
Residential Seat Styling
Entry Rail (Oak & Brass)
Raised Panel Cabinet Doors
Adjustable Cabinet Shelves (Selected Cabinets)
Sink Cutting Board
Flex-O-Lator® Dinette with Adjustable Seating
Solid Divider Doors
Large, Double Porcelain Sink
Living Room—Dinette/Sofa (Slide-Out)

PLATFORM CONSTRUCTION

Power Platform II Floor Configuration
Heated Water & Holding Tank Compartments
Polyethylene Luggage Compartment Boxes (Selected Locations)
Steel Truss System
Steel Outriggers

BODY STRUCTURE

Vacubond Upper/Lower Floors
Vacubond Walls with High Gloss Exterior Fiberglass
Radiused Roof with Ducted A/C
Rubber Roof
Steel Wall/Ceiling Framing

SLEEPING ACCOMMODATIONS

Sofa Bed
Dinette
Queen Bed

ELECTRICAL

Dual Patio Receptacle
120V/12V AC/DC Converter Central Electrical Panel
120V/12V Wire Raceway
Water Pump Switch
30-amp Service
Wall Switches
ECC Climate Control
4—6V/Deep Cycle 218 amp House Batteries

EXTERIOR STORAGE

Insulated Luggage Doors
Single Paddle/Metal Latches
Continuous One Piece Bulb Seal
Central Utility Compartment
Hidden Stainless Steel Latch Rods
Gas Lift Strut Supports
Lighted Compartments
Steel Frames
Carpeted Luggage Compartment

INTERIOR LIGHTING

Fluorescent Ceiling with Dual Bulb
48" 120V Fluorescent Light
Decor Lighting
Incandescent Lighting
3-Light Brass Vanity
Make-Up Lights in Bath

APPLIANCES

20" Panasonic® Television in Front Overhead
20" Panasonic® Television in Rear
VHS/VCR
Smoke Detector
Video Control Box (TV/VCR)
LP Detector
CO Detector
6-Gallon Quick Recovery Water Heater with D.S.I.
22" 3 Burner, High-Output Range with Oven
Light/Power Range Hood with Spice Rack
RV System Monitor Panel
Folding Range Cover
High Efficiency Dual Roof A/C with Solar Panel
Water Heater Bypass
2000 Watt Inverter/Converter
Garbage Disposal
Porcelain Toilet with Water Saver
Toilet Tank "Sani-flush" System
1-cu. ft. Microwave
8-cu. ft. Dometic® Double Door Refrigerator
Single Lever Galley Faucet
Water Filter with Faucet
Demand Water Pump with Filter
Power Bath Vent
TV Antenna
Fantastic® Power Roof Vents in Galley and Bath
Fire Extinguisher
Phone Jack
Rear Speakers in Bedroom

New Bounder Diesel Features For 2000

Our engineering may set us apart from the rest. But the things you'll notice most, when you and your family take a trip, are the top-of-the-line features. This year we have, once again, added to an already large list of features with the following options:

- **CB Radio Ready**
- **Coffee Table**
- **Compact Disc Player**
- **Free-Standing Dinette and Chairs**
- **Sofa Sleeper**
- **Steel Truss Basement Construction**
- **Toilet Tank "Sani-flush" System**

2000 Bounder Diesel Options

EXTERIOR AUTOMOTIVE	36S	39Z
Freightliner Chassis 275-HP	STD	STD
EXTERIOR	36S	39Z
Awning—USA	OPT	OPT
INTERIOR AUTOMOTIVE	36S	39Z
Stereo AM/FM CD Player	OPT	OPT
APPLIANCES	36S	39Z
Compact Disc Player	OPT	OPT
DSS Manual Lift Satellite Dish	OPT	OPT
Dishwasher	N/A	OPT
Convection Microwave	OPT	STD
Washer/Dryer	OPT	OPT
Dometic® Side-by-Side Refrigerator with Ice Maker	OPT	OPT
CSA Convection Microwave	OPT	OPT
Furnace 20M BTU/34M (Dual)	N/A	STD
Furnace 34M BTU	STD	N/A
ELECTRICAL	36S	39Z
7.5kW Onan® Diesel Generator	OPT	OPT
CSA Package—Freightliner	OPT	OPT
CB Radio Ready	OPT	OPT
INTERIOR	36S	39Z
Lounge Recliner	OPT	OPT
Coffee Table	OPT	OPT
Free-Standing Dinette and Chairs	OPT	OPT
Rear Vision Camera	OPT	OPT
Leather Driver/Passenger Seats with Power Driver	OPT	OPT
Concealed Trash Compartment	N/A	STD
Storage Behind Sofa	N/A	STD
Wardrobe Lighting	STD	N/A
SLEEPING ACCOMMODATIONS	36S	39Z
Sofa Sleeper	51 1/2" x 71 1/2" (Std)	51 1/2" x 71 1/2" (Opt)
Sofa Bed (Std)	N/A	46" x 76"
Dinette (Std)	42" x 74"	42" x 74"
Queen Bed (Std)	60" x 80"	60" x 80"

Product information and photography included in this brochure were as accurate as possible at the time of publication. For the most current product information and changes, please visit our Website at www.fleetwood.com or contact your local Fleetwood dealer. Subsequent refinements may be evident in the actual product. Prices and specifications are subject to change without notice. All fuel and liquid capacities are approximate and dimensions are nominal. Fleetwood has designed its motor home brands to provide a variety of potential uses for its customers. Each unit features the optimum storage, fluid, seating and sleeping capabilities. Though the customer enjoys this potential, he/she also has the responsibility to select the proper combinations of loads without exceeding the chassis weight capacities.

The Power Platform II Makes The Difference

Bounder Diesel's quality begins long before the features come on board. We begin by building on our exclusive Power Platform II, a unique truss design welded together using tubular steel that's durable, strong, and dependable. The result is a quiet and nearly flawless ride, increased floor strength, and substantially more storage space below. An all-steel foundation further reduces stress loads on the sidewalls and minimizes chassis flex on uneven roads.

Exterior Features for the 2000 Bounder Diesel

Bounder Diesel not only has everything Bounder has in terms of practical form and function, but can also boast the performance and economical benefits of a 275-HP Cummins® diesel engine. Add a full fiberglass front cap and bumper similar to our other coaches and you're looking at the motor home that's a Bounder enthusiast's dream come true.

Bounder Diesel offers an all-new steel truss construction in its basement floor configuration that offers more pass-through storage on a foundation that is three times stronger than regular wood frames. And with Bounder Diesel's domed roof, there is more interior head room, improved roof strength, and optimum insulation.

Bounder Diesel—providing performance, function, and a whole lot more.

2000 Bounder Diesel Specifications

FREIGHTLINER	36S	39Z
Engine 275-HP 5.9L Diesel	STD	STD
Wheel Base	228"	252"
GVWR lbs/kgs (1)	24,850/11,272	24,850/11,272
Front GAWR lbs/kgs (2)	9,350/4,241	9,350/4,241
Rear GAWR lbs/kgs (2)	15,500/7,031	15,500/7,031
Base Weight lbs/kgs (3)	18,735/8,498	19,314/8,761
GCWR lbs/kgs (4)	29,850/13,540	29,850/13,540
Hitch Rating/Tongue Weight lbs	5,000/500	5,000/500
Hitch Rating/Tongue Weight kgs	2,268/227	2,268/227
Fuel Capacity lbs/kgs	540/245	540/245

DIMENSIONS	36S	39Z
Overall Length	36' 10"	39' 0"
Overall Height with A/C	12' 1"	12' 1"
Overall Width (maximum)	102"	102"
Interior Height (maximum)	79"	79"
Interior Width (maximum)	96"	96"

STORAGE CAPACITIES (CU.FT.)	36S	39Z
Exterior (Est.)	121	125

LIQUID CAPACITIES (GALLONS/LITERS)	36S	39Z
Fuel Tank	90/341	90/341
Fresh Water	100/378	100/378
Water Heater	6/23	6/23
Body-Waste Holding	50/189	50/189
Grey-Water Holding	50/189	50/189
Appliance LPG Tank (wc/See Notes)	25/95	25/95

Note: Tank manufacturer's listed water capacity (wc). Actual filled LP capacity is 80% of listing due to safety shutoff required on tank.

- 1. GVWR (Gross Vehicle Weight Rating): Means the maximum permissible weight of this motor home. The GVWR is equal to or greater than the sum of the unloaded vehicle weight plus the net carrying capacity.*
- 2. GAWR (Gross Axle Weight Rating): Means the maximum permissible loaded weight a specific axle is designed to carry.*
- 3. Base Weight: Means the weight of the motor home without fuel, options, water, cargo, or passengers.*
- 4. GCWR (Gross Combination Weight Rating): Means the value specified by the motor home manufacturer as the maximum allowable loaded weight of this motor home with its towed trailer or towed vehicle. Towing and braking capacities may differ. Refer to Fleetwood and chassis manufacturer manuals for complete information.*

FLEETWOOD RV

Fleetwood Enterprises, Inc.
RV Marketing
P.O. Box 7638
Riverside, CA 92513-7638



Your local Fleetwood RV dealer is:

TO FIND A FLEETWOOD DEALER near you, call 24 hours a day at 1-800-444-4905 or visit our Website at www.fleetwood.com

FOR CUSTOMER ASSISTANCE, call toll free 24 hours a day at 1-800-322-8216, visit our Website, or you may write to Fleetwood Enterprises, Inc., P.O. Box 7638, Riverside, CA 92513-7638.

Product information and photography included in this brochure were as accurate as possible at the time of publication. For the most current product information and changes, please visit our Website at www.fleetwood.com or contact your local Fleetwood dealer. Subsequent refinements may be evident in the actual product. Prices and specifications are subject to change without notice. All fuel and liquid capacities are approximate and dimensions are nominal. Fleetwood has designed its motor home brands to provide a variety of potential uses for its customers. Each unit features the optimum storage, fluid, seating and sleeping capabilities. Though the customer enjoys this potential, he/she also has the responsibility to select the proper combinations of loads without exceeding the chassis weight capacities.

© 1999 Fleetwood Enterprises, Inc.

Inventory Control Number 180002/2nd Edition 12/99



This award certifies that Fleetwood has met Ford's rigid quality standards for modifying a Ford chassis.