

OUTLAW BY DAMON

2009

OUTLAW

D

DAMON



THE ORIGINAL CLASS-A TOY HAULER



OUTLAW

HAULS ASSETS IN COMPLETE COMFORT, SECURITY AND STYLE

Outlaw was the original Class-A toy hauler and continues on that same road toward even more innovation. New interior decor choices featuring Euro chair and ottoman, new outside entertainment center option, new cabinetry, new sloped slide-out roofs for better rain runoff, and much more make this bad-boy the class hero in hauling assets—and living large!

WE'RE DAMON MOTOR COACH

Damon has led the way in motorhome design and manufacturing for over 20 years. Innovative floorplans, higher standards in quality, better after-the-sale support, and much more have helped make Damon a great name. As with each of Damon's products, you'll find high-end amenities, without the high-dollar price tags. Hope you'll enjoy the ride as much as we have!



Scorpion upgrade package shown.

NO FUN LEFT BEHIND



ATVs

You could haul four ATVs and all your gear in an Outlaw. Our patented lift ramp is awesome, too!



SCOOTERS

Snowbirds love to take it all with them. Bicycles, lawnmowers, toys and necessities fit here.



ROAD HOGS

Next trip to Sturgis, Daytona or cross country—load the bikes in here and travel in total style.



DIRT BIKES

Whether you're a weekend warrior or a professional privateer race team, this is the ticket.



CARTS

Go karts, golf carts, shopping carts (for you flea market folks!)—why not travel first class?



MISC.

Believe it or not, Outlaws are popular with the dog show crowd. You dream it, this coach can haul it!

HOW TO GET AWAY WITH LIVING LARGE

Sure there are Class-C Toy Haulers, but nothing is as livable as the stretch-out room you'll find in a Class-A coach. Outlaw is loaded with premium creature comforts, like a Queen bed loft suite; slide room floor-panels; 26" LCD TV in living area and 15" LCD TV (opt.) in loft suite; and more. And storage abounds on this out-of-the-box motorhome.



26" LCD TV
Comes with full-function remote, antenna, booster and easy-access wall plugs for accessories.



DREAM DINETTE
Damon's standard Dream Dinette is easier to set up and take down than any other design.



CARRIER BRAND AC
Our low profile Carrier is fully functional and offers brand name quality and reliability.



LOTS OF STORAGE
From pantry to closets, under bed and full basement exterior pass-through; Outlaw has more.



QUALITY FEATURES
Full extension metal drawer guides also feature solid wood cabinet door and drawer fronts.



ATTACHED GARAGE
Outlaws are unique to the Class-A market. You get either a 10' or 12' garage!

An Outlaw, by Damon, is built to higher standards as well. You won't find Futon mattresses, genuine Dream Dinettes, raised panel cabinetry with residential grade drawer guides, basement pass-through storage, dual pane windows, Carrier brand air conditioning, 5.5 Onan Gold generators and more on any other motorhome in Outlaw's price range.

INTERIOR COLORS

Choose from three distinct interior decors that can turn your Outlaw into a real hero!

BRONZED BULLION



CARBON COIN



INCA TREASURE



SPACIOUS BATHROOM AND SHOWER.



A LOT OF COMFORT AND EXTRA SPACE FOR A TOYHAULER! 3611 FLOORPLAN IN INCA TREASURE.



FINGERTIP CONTROLS AND BACK-UP CAMERA SYSTEM.



LARGE QUEEN BED WITH FUTON MATTRESS IN LOFT.



FRONT CAPTAIN'S CHAIRS SWIVEL AND A LARGE ONE-PIECE WINDSHIELD OFFERS PANORAMIC VIEWS.



OPTIONAL, ELECTRIC DROP-DOWN BED IN GARAGE AREA



GLAZED MAPLE (Optional)
Solid wood raised panel door and drawer fronts.



CHERRY (Standard)
All interior cabinet doors feature hidden hinges.



OUTSIDE TV SYSTEM

An exterior entertainment center featuring this 26" LCD TV and piston assisted door is a great option for your coach.



15" LCD TV IN BACK

In the garage, you'll find a 15" LCD TV (Opt.) along with a stainless storage cabinet, tie downs, premium sound system and more!



COMPLETELY FINISHED AND ACCESSORIZED GARAGE FEATURES A DIMOND GRID, OIL-RESISTANT TPO FLOOR AND MORE!



THIS PATENTED RAMP LIFT IS EASY TO OPERATE.



13" STEEL FLOOR STUSSES ALLOW FOR MORE PASS THROUGH STORAGE.

PARK IN REAR

Damon broke all the rules by introducing the first Class-A Toy Hauler a few years back. This 8' x 10' (or 12') "garage" has all the space and accessories to haul pretty much anything you want, without the need to lug a trailer along. Patented design features plus additional sleeping area, workshop and more make outlaw the most wanted Toy Hauler.

BUILT RIGHT, THE WAY YOU'D DO IT!

You get more with Damon. Neoprene vibration dampening, all openings framed in aluminum, galvanized steel underbelly, heated holding tanks ducted from furnace, and more. All built to higher specifications!

ROOF:

- 1) Vinyl ceiling
- 2) Lauan (wood)
- 3) Air cond. duct
- 4) Lauan (wood)
- 5) TPO roofing
- 6) Insulation
- 7) Aluminum frame

SIDEWALLS:

- 1) Interior panel
- 2) 1-1/2" block foam insulation
- 3) Lauan backer
- 4) Ext. fiberglass
- 5) Aluminum frame (tubing)

FLOOR:

- 1) Carpet
- 2) Padding
- 3) Structurwood flooring
- 4) Block foam insulation
- 5) Galvanized metal
- 6) Steel frame



SIDEWALLS

FLOOR

YOUR PERFECT FLOORPLAN SUITE AWAITS

HERE ARE DESIGNS YOU WON'T FIND ANYWHERE ELSE!



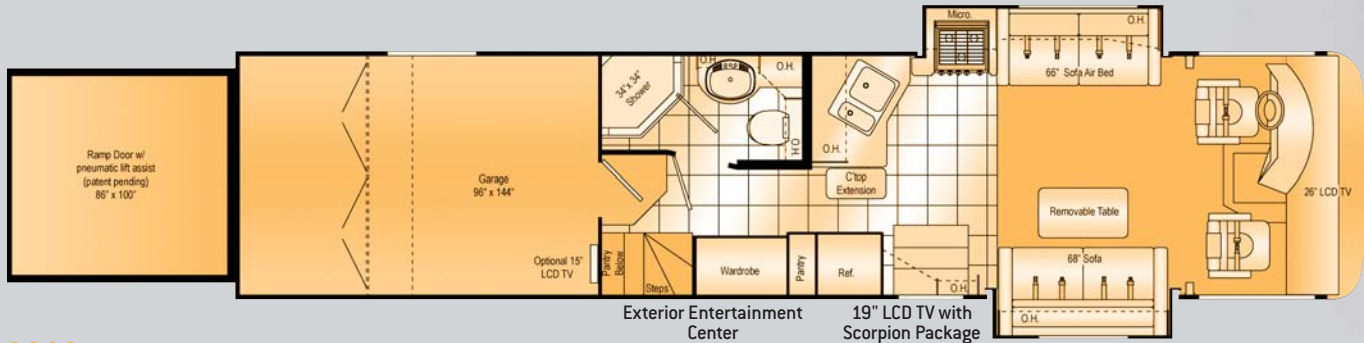
3611 OUTLAW

CHASSIS	WORKHORSE/FORD/FREIGHTLINER	WATER HEATER	6 (GAL.)
WHEELBASE	242	GREY/BLACK WATER	47 (GAL.)
OVERALL LENGTH	37'04"	LP (LBS.)	104
OVERALL WIDTH	101"	SLEEPING CAPACITY	7
OVERALL HEIGHT WITH AC	12'11"	EXTERIOR STORAGE	131 (CU. FT.)
GVWR	22K/22K/27K	INTERIOR DRAWERS	11
GCWR	30K/26K/30K	INTERIOR DRAWER CAPACITY	9.7 (CU. FT.)
FRESH WATER	65 (GAL.)	FUEL CAPACITY	75/75/80 (APPROX. GAL.)



Loft Bedroom

THE 3808 IS NEW FOR THE 2009 MODEL YEAR.



3808 OUTLAW

CHASSIS	WORKHORSE/FORD/FREIGHTLINER	WATER HEATER	6 (GAL.)
WHEELBASE	260	GREY/BLACK WATER	47 (GAL.)
OVERALL LENGTH	38'11"	LP (LBS.)	104
OVERALL WIDTH	101"	SLEEPING CAPACITY	6
OVERALL HEIGHT WITH AC	12'11"	EXTERIOR STORAGE	105 (CU. FT.)
GVWR	NA/26K/27K	INTERIOR DRAWERS	12
GCWR	NA/30K/30K	INTERIOR DRAWER CAPACITY	10.5 (CU. FT.)
FRESH WATER	65 (GAL.)	FUEL CAPACITY	75/75/80 (APPROX. GAL.)



Loft Bedroom



Optional Booth Dinette Replaces Sofa

A FOUNDATION THAT'LL LAST FOR YEARS

How do 13" steel floor trusses for more pass through storage, steel firewall, bonded steel framing, bus-style storage doors, and more sound? Outlaw delivers solid value.



SCORPION UPGRADE PACKAGE

This package (partial body paint shown here) includes special "Scorpion" mud flap, power electric awning with wind and rain sensor, and electric sun visor as a complete optional upgrade package.

STANDARD GRAPHICS

NOT PICTURED, SEE WEBSITE
Standard Outlaw graphics are similar to the Scorpion package shown here, but do not include the larger areas of paint. You can find more information and details at outlawrv.com or go to demonrv.com

EXTERIOR

- Radius corner domed TPO roof
- Front fiberglass caps
- Side-mounted patio awning
- Side-mounted awning over slideout
- Upgraded smooth high gloss fiberglass wall
- Black framed dual-pane windows
- Patio lights
- Easy-to-clean, lighted, rotocast storage compartments
- Full basement pass-through storage
- Gas strut supported storage doors on select models
- Rear drop down ramp door w/ lift assist
- Remote fuel filling station w/ pump and nozzle (N/A Fred)
- Rear spot lights

CHASSIS

- Automatic leveling jacks w/touch pad controls
- Front and rear mud flaps
- Aluminum wheels
- Trailer hitch (5,000 tow / 500 tongue lbs.)
- Emergency start circuit
- Layer of neoprene vibration dampener
- 22.5 tires

ENTRY

- Electric exterior entrance step
- Battery access in stairwell
- Battery disconnect

COCKPIT

- AM/FM radio with in-dash CD player, MP3 holder and plug
- Dash fans
- Tinted wraparound windshield
- Windshield privacy shade
- Side mount power mirrors with heat
- Reclining swivel captain's chairs
- 3-point, wall-mounted seat belts
- Sun visors

STANDARD FEATURES & OPTIONAL EQUIPMENT

- Backup monitor system w/ audio

LIVING AREA

- Euro recliner
- Sofa/ Air Bed
- 68" Jiffy Sofa (3808 only)
- Lambrequin window treatments
- Day/night shades (except kitchen)
- 26" LCD TV with full-function remote, antenna, booster & jack (3611)
- 26" LCD TV in cockpit overhead with full-function remote, antenna, booster and jack (3808)
- Video package (DVD player and control center)
- 19" LCD above entry door

KITCHEN

- Refrigerator with raised panel hard wood door front
- 3-burner cooktop
- Microwave / Convection Oven in overhead cabinet (3611)
- Microwave / Convection Oven with Cooktop (1/2) Time (3808)
- Monitor panel with LPG readout
- Pantry
- Solid-wood raised panel cabinet doors upper and lower
- Vinyl tile flooring
- Dream dinette

- Wallpaper border
- Ball bearing drawer guides

BEDROOM (LOFT AREA)

- Mattress w/ pillow shams and pillows
- 15" LCD TV
- Ceiling lights with switch
- Privacy curtain

BATHROOM

- Vinyl tile flooring
- Shower with surround
- Glass shower door
- Fantastic power vent
- Foot-flush toilet
- Skylight

UTILITIES

- Dual air conditioners: 13,500-BTU ducted central (Low-profile)
- Remote thermostatically controlled air conditioning
- Furnace: 35,000 BTU electronic ignition floor-ducted
- Water heater: 6-gallon gas with electric ignition
- Water-heater bypass kit
- Generator: Onan 5.5 kW Marquis Gold (N/A Fred chassis)
- Generator: Onan 6.0 kW quiet diesel (Fred chassis only)

- 80 AMP converter
- Dual 6-volt auxiliary batteries
- Battery disconnect
- 50-amp, 120-volt service
- Exterior shower
- Enclosed heated potable and holding tanks
- Black water tank flush
- Cable TV/satellite hookup
- Pre-wired for roof-mounted satellite dish
- Exterior GFCI receptacle
- Exterior TV prep
- Carbon-monoxide, LP gas, and smoke detectors
- 600 Watt Inverter

GARAGE

- Tread plate non-slip flooring
- Air ventilation sidewall vents
- A/C and heat vents
- Stainless storage cabinet
- TV Hook-up / receptacles
- Fantastic power vent
- Tie down tracks
- Premium sound system with exterior remote

OPTIONS

- Exterior entertainment center with 26" LCD TV
- Glazed maple colored cabinets
- 68" "Faux Leather" Jiffy Sofa with air bed (3808)
- Booth dinette option (3808)
- Electric queen lift bed (N/A CSA)
- 15" LCD TV in garage
- Scorpion Package**
 - "Scorpion" mud flap
 - Electric sunvisor
 - Partial body paint
 - Power electric awning w/wind and rain sensor

** Scorpion Package to be sold as a complete package

YOUR LOCAL OUTLAW DEALER:

Coach-Net Available on all 2008 Damon motorhomes rapid response 24/7 RVIA Go RVing.



MORE DETAILS ONLINE Visit us online for more information about Damon products. Learn about each of Damon's Gas and Diesel Class-A models as well as the exciting new Avanti fuel-efficient clean diesel motorhome. You can take virtual tours, explore 360° viewable interiors, see additional features and find more at: **OUTLAWRV.COM**



P.O. BOX 2888 • ELKHART, IN 46515 • CUSTOMER SERVICE: 800-860-3812 • SALES DEPARTMENT: 800-860-5658 • DAMONRV.COM

