

CHALLENGER BY DAMON



DAMON

MODEL 2009 YEAR

Challenger

CLASS A MOTORHOMES



Timberline full body paint shown.

MILES AHEAD IN QUALITY, LUXURY AND EXTRAORDINARY VALUE



Toasted Spice partial body paint shown.



A BETTER COACH BY DESIGN

From the ground up, Challenger is designed and built for the luxury gas motorhome buyer who wants more for his and her money. What other brands list as optional equipment Challenger delivers as standard features for much less than you'd expect. We challenge you to find a better motorhome.



For over 20 years Damon has been leading the way for the motorhome market. More innovative floorplans and coach designs, higher standards in quality, and superior after-the-sale support have helped set Damon apart. Today, Damon statistically builds some of the most popular motorhomes on the road, and at the campgrounds. You'll find high-end amenities, clever uses of space, solid structural integrity and simply more of everything. And most of all, with Damon, you'll always get more for your money!

DAMON LEADS THE WAY



PLENTY OF STORAGE
Thanks to better frame rail design, there's a lot of pass-through storage.



RECESSED LIGHTING
Modern, flush halogen lighting in a standard feature on Challenger.



PANORAMIC VIEWS
Platinum Series comes with power sun visor. All have one-piece windshields.



CARRIER BRAND AC
Top quality components and brand names will serve you well.



More luxuries, conveniences and quality features are yours when you choose Damon's top-of-the-line gas motorhome. Challenger surpasses the plush fabrics, brand name components, exquisite designs and solid structures found on coaches costing much more. Look further into Challenger's comfort and innovation and you'll be surprised how much value you'll find.



SOFA/AIR BED
Challenger's sofa in the living area converts into a large, comfortable bed. And it's an air mattress/bed! This standard feature is impressive, especially when you see how easy it inflates and deflates. Push of a button—now that's roughing it!



DREAM DINETTE
This exclusive, standard dinette assembly operates with the flip of a lever. The table folds out of the way, making room for a bed. A unique piston and hinged-arm system not only makes folding easy, it allows for more leg room for occupants.

INTERIOR COLORS

Choose from three distinct interior decors. World-class design, colors and quality.

CRIMSON WAY



FROSTY LANE



HILLCREST HEIGHTS



26" LCD TV IS STANDARD AND THIS LOW PROFILE ENGINE COVER MAKES MOVING AROUND COCKPIT EASY AND SAFE.



MODEL 376 SHOWN IN HILCREST HEIGHTS DECOR WITH CHERRY CABINETRY.



INNOVATIVE BUNK BEDS ARE PART OF MODEL 376'S FLOORPLAN.



SOFT TOUCH VINYL CEILING, LARGE QUEEN BED AND TWO WARDROBES HIGHLIGHT THE BEDROOM.



RECESSED HALOGEN LIGHTS AND A MASSIVE ONE-PIECE WINDSHIELD ENHANCE YOUR VIEWING EXPERIENCE.



LARGE SHOWER, STORAGE AND COUNTERTOP SHOWN.



GLAZED MAPLE
Solid wood raised panel door and drawer fronts. Maple is optional.



CHERRY
Standard wood. Doors have hidden hinges.

HIGH-END FLOORPLANS AND INTERIOR DESIGN, FOR LESS

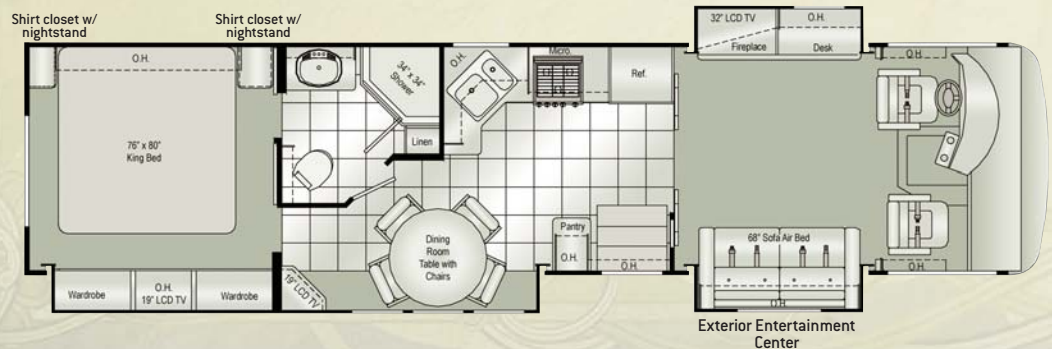
348 *Challenger*

CHASSIS	WORKHORSE/FORD
WHEELBASE	228
OVERALL LENGTH	36'5"
OVERALL WIDTH	101"
OVERALL HEIGHT WITH AC	12'0"
GVWR	21,200/20,500
GCWR	26K
FRESH WATER	65 (GAL.)
WATER HEATER	6 (GAL.)
GREY/BLACK WATER	47 (GAL.)
LP (LBS.)	104
SLEEPING CAPACITY	5
EXTERIOR STORAGE	200 (CU. FT.)
INTERIOR DRAWERS	20
INTERIOR DRAWER CAPACITY	13 (CU. FT.)
FUEL CAPACITY	75 (APPROX. GAL.)



371 *Challenger*

CHASSIS	WORKHORSE/FORD
WHEELBASE	242
OVERALL LENGTH	37'10"
OVERALL WIDTH	101"
OVERALL HEIGHT WITH AC	12'0"
GVWR	22K
GCWR	26K
FRESH WATER	65 (GAL.)
WATER HEATER	6 (GAL.)
GREY/BLACK WATER	47 (GAL.)
LP (LBS.)	104
SLEEPING CAPACITY	8
EXTERIOR STORAGE	225 (CU. FT.)
INTERIOR DRAWERS	21
INTERIOR DRAWER CAPACITY	16 (CU. FT.)
FUEL CAPACITY	75 (APPROX. GAL.)



OVERBUILT FOR THE PRICE

You get more with Damon. Neoprene vibration dampening, all openings framed in aluminum, galvanized steel underbelly, heated holding tanks from furnace, and more. All built to higher specifications!

- ROOF:**
- 1) Soft Touch vinyl ceiling
 - 2) Luan [wood]
 - 3) Air cond. duct
 - 4) Luan [wood]
 - 5) TPO roofing
 - 6) Insulation
 - 7) Aluminum frame

- SIDEWALLS:**
- 1) Interior panel
 - 2) 1-1/2" block foam insulation
 - 3) Luan backer
 - 4) Ext. fiberglass
 - 5) Aluminum frame [tubing]

- FLOOR:**
- 1) Carpet
 - 2) Padding
 - 3) Structurwood® flooring
 - 4) Block foam
 - 5) Galvanized metal
 - 6) Steel frame



FOR THE RIGORS OF EVERYDAY USE

How do 13" steel floor trusses for more pass through storage, steel firewall, bonded steel framing, bus-style storage doors, and more sound? Challenger delivers solid value.



Shirt closet w/
nightstand



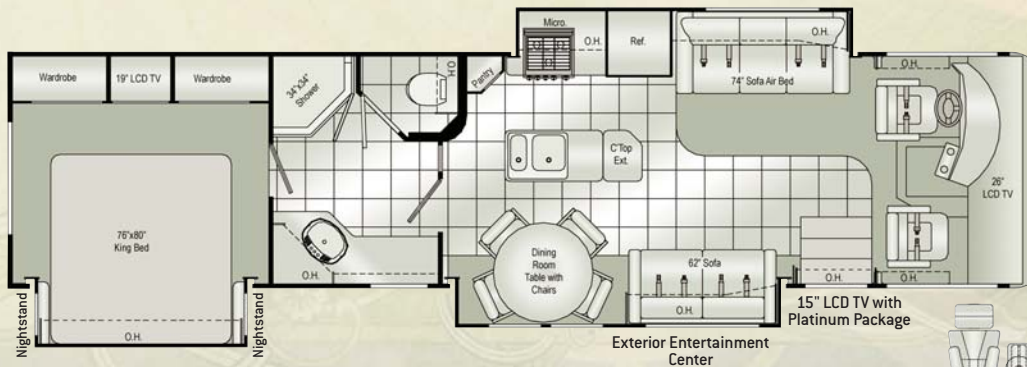
376 Challenger

CHASSIS	WORKHORSE/FORD
WHEELBASE	242
OVERALL LENGTH	37'10"
OVERALL WIDTH	101"
OVERALL HEIGHT WITH AC	12'0"
GVWR	22K
GCWR	26K
FRESH WATER	65 (GAL.)
WATER HEATER	6 (GAL.)
GREY/BLACK WATER	47 (GAL.)
LP (LBS.)	104
SLEEPING CAPACITY	8
EXTERIOR STORAGE	225 (CU. FT.)
INTERIOR DRAWERS	15
INTERIOR DRAWER CAPACITY	9.5 (CU. FT.)
FUEL CAPACITY	75 (APPROX. GAL.)



377 Challenger

CHASSIS	WORKHORSE/FORD
WHEELBASE	242
OVERALL LENGTH	37'10"
OVERALL WIDTH	101"
OVERALL HEIGHT WITH AC	12'0"
GVWR	22K
GCWR	26K
FRESH WATER	65 (GAL.)
WATER HEATER	6 (GAL.)
GREY/BLACK WATER	47 (GAL.)
LP (LBS.)	104
SLEEPING CAPACITY	5
EXTERIOR STORAGE	225 (CU. FT.)
INTERIOR DRAWERS	15
INTERIOR DRAWER CAPACITY	16 (CU. FT.)
FUEL CAPACITY	75 (APPROX. GAL.)



378 Challenger

CHASSIS	WORKHORSE/FORD
WHEELBASE	242
OVERALL LENGTH	37'10"
OVERALL WIDTH	101"
OVERALL HEIGHT WITH AC	12'0"
GVWR	22K
GCWR	26K
FRESH WATER	65 (GAL.)
WATER HEATER	6 (GAL.)
GREY/BLACK WATER	47 (GAL.)
LP (LBS.)	104
SLEEPING CAPACITY	5
EXTERIOR STORAGE	225 (CU. FT.)
INTERIOR DRAWERS	17
INTERIOR DRAWER CAPACITY	16 (CU. FT.)
FUEL CAPACITY	75 (APPROX. GAL.)



Optional Euro Chair
Replaces 62" Sofa



STANDARD GRAPHICS

Challenger's graphics enhance its fiberglass front and rear caps and smooth sides.



TOASTED SPICE PARTIAL PAINT

Partial painted graphics are optional on Challenger models. This contemporary design enhances the aerodynamic, fiberglass-bodied coach.



TIMBERLINE FULL BODY PAINT

Full body paint is a popular option for your Challenger coach. High quality paint and clearcoat not only adds to the great looks, but increases its value.

BAYBERRY FULL BODY PAINT (NOT PICTURED, SEE WEBSITE)

Another great color scheme option. Damon also offers an optional Gel-coat sidewall for an even smoother, almost glass-like surface.

STANDARD & OPTIONAL FEATURES

EXTERIOR

- Fog lights
- Radius corner domed TPO roof
- Rear ladder
- Fiberglass front and rear caps
- Side-mounted patio awning
- Side-mounted awning over slideout(s)
- Easy-to-clean, lighted, rotocast storage compartments
- Full basement pass-through storage
- Gas strut supported storage doors [on select doors]
- Side hinged baggage doors on Passenger side

CHASSIS

- Automatic leveling jacks with touch pad controls
- Front and rear mud flaps
- Trailer hitch (5,000 tow / 500 tongue lbs.)
- Emergency start circuit
- Layer of neoprene vibration dampener
- 22" tires w/bright aluminum wheels

ENTRY

- Double Electric exterior entrance step
- Battery access in stairwell

COCKPIT

- AM/FM radio with in-dash CD player
- Dash fans
- Tinted wrap around one piece windshield
- Side mount power mirrors with heat
- Reclining swivel Flexsteel "Faux Leather" captain's chairs
- 3-point, wall-mounted seat belts
- Sun visors
- 7" Backup monitor system with audio
- Drivers arm rest with map pocket and drink holder

LIVING AREA

- Euro recliner w/leather seating surface & ottoman [348, 368]
- Sofa/air bed
- Sofa bed (passenger side 376, 377, 378)
- Lambrequin window treatments

- Day/night shades (except kitchen and at bunk beds)
- 100% nylon carpeting with stain treatment and pad
- Electric fireplace with remote control [371]
- 26" Color LCD TV in cockpit overhead with full-function remote, antenna, booster and jack [376, 378]
- 26" LCD Color TV in living area with full-function remote, antenna, booster and co-ax connection [348]
- 32" LCD Color TV in living area with full-function remote, antenna, booster and co-ax connection [371, 377]
- Video package (DVD player and control center)
- Soft touch padded vinyl ceiling

KITCHEN

- Refrigerator w/raised panel doors
- Monitor panel with LPG readout
- Pantry storage
- Solid-wood raised panel cabinet doors (upper and lower)
- Linoleum accented walk area
- Booth dinette [N/A 371, 377]
- Freestanding dinette w/2 chairs [371, 377 only]
- 2 folding chairs (available with freestanding dinette only)
- 19" LCD Color TV in dining area with full-function remote [371, 377, 378]
- Fantastic® power vent
- Ball bearing drawer guides

BEDROOM

- Upgrade innerspring mattress
- Bunk beds [376]
- Bedspread and pillow shams with pillows
- LCD Color TV with full-function remote
- 15" LCD color TV [376]
- Pin-up lights
- Overhead cabinet in bedroom slideout
- Day/night shades

BATHROOM

- Linoleum throughout
- Shower with surround
- Shower door
- Skylight in shower
- Power vent
- Foot flush porcelain toilet with sprayer

UTILITIES

- Air conditioners: 13,500-BTU ducted central (front and rear)
- Remote thermostatically controlled air conditioning
- Furnace: 34,000 BTU electronic ignition floor-ducted
- Water heater: 6-gallon gas/electric with electric ignition
- Water-heater bypass kit
- Generator: Onan 5.5 kW Marquis Gold
- 60 AMP converter
- Dual 6-volt auxiliary batteries
- Battery disconnect
- 50-amp, 120-volt service

- Exterior shower
- Black water tank flush
- Enclosed heated potable and holding tanks
- Pre-wired for roof-mounted satellite dish
- Exterior TV prep
- Exterior GFCI receptacle
- Carbon-monoxide, propane gas and smoke detectors

OPTIONS

- Partial paint package
- Upgraded gel-coat wall
- Black framed dual-pane windows
- Exterior entertainment center with 26" LCD TV and speakers [N/A 377]
- Computer tray (passenger side)
- Driver's door with power window - (must select corner mount power mirrors with heat)
- Corner mount power mirrors w/heat
- "Faux Leather" sofa/air bed
- "Faux Leather" sofa [376, 377, 378]
- Euro recliner with leather seating surface and ottoman, and table with lamp [378]
- Home theater package with sub woofer

PLATINUM EDITION PACKAGE

- Full body paint
- GelCoat poured sidewalls
- Power-color coordinated patio awning
- Corian kitchen countertop with Corian edge
- Corian range and sink covers
- Heated, corner-mounted power mirrors
- Sofa/air bed [faux leather]
- Sofa [faux leather] [N/A 348, 371]
- Home theater package w/sub woofer
- Electric front sun visor
- Wood arches in hallway
- LCD TV above entry door [N/A 377, 371]
- Family personal radios
- Pull-out kitchen faucet
- Designer headboard
- Upgrade light at dinette/kitchen

YOUR LOCAL CHALLENGER DEALER:




Coach-Net® rapid response SR RVIA Go RVing.



MORE DETAILS ONLINE Visit us online for more information about Damon products. Learn about each of Damon's Gas and Diesel Class-A models as well as the exciting new Avanti fuel-efficient clean diesel motorhome. Take virtual tours, explore 360° viewable interiors, see additional features, and find out more for less, at: **DAMONRV.COM**



P.O. BOX 2888 • ELKHART, IN 46515 • CUSTOMER SERVICE: 800-860-3812 • SALES DEPARTMENT: 800-860-5658 • DAMONRV.COM  THOR AMERICA'S BEST RV VALUE

Due to constant product improvements, the specifications, component parts and standard/optional equipment are subject to change without notice or obligation. Product photography or diagrams may show equipment that is optional. Damon Motor Coach reserves the right to make changes in prices and models and to discontinue models without notice or obligation. Components, parts or chassis may have been manufactured at times other than the model year indicated. All capacities are approximate and dimensions are nominal. All dry weights are based on standard model features and do not include optional features or equipment. Various RV components and features may differ to conform to local codes. Due to EPA environmental restrictions, engine power and torque ratings may change mid-year.