

CRUISER

Cruiser Fifth Wheels and Travel Trailers



**NEW** Cruiser Exterior Paint Package



Cruiser Travel Trailer



Cruiser Sahara



Cruiser Patriot/Provincial



# CRUISER



## Cruiser travel trailer

Aerodynamically designed, full color front cap and Secure Stance® axles for easy towing.

pg 2



## Cruiser fifth wheel

Engineered for half ton towing. Impressive package of comfort and convenience.

pg 4



## Cruiser Sahara

Standard full body color with champaign colored sidewalls and cappuccino colored front cap.

pg 8



## Cruiser Patriot & Provincial fifth wheel

Abounding in easy-living features with flush floor bedroom. Abounding in easy-living feature with a full time camper in mind.

pg 10





**Model CT29RLX shown with Ocean décor**

The Cruiser travel trailer is designed for lite-weight easy towing by half-ton vehicles, but it's no lite-weight when it comes to interior livability. It's an industry first with 7' interior heights as well as boasting taller slide-out heights. Check out all the creature comforts of this gorgeous interior. The bountiful living area is furnished with fine furniture, panoramic picture window, elegant etched glass cabinets, and round free standing dinette for family dining. These are just a few of the many outstanding features that make the Cruiser such a great family travel trailer.



**Model CF29BHX shown with Nutmeg décor**

The Cruiser fifth wheel is specially engineered to offer more lite-weight towing options. A rear receiver hitch even allows for triple towing, so you can bring along those extra toys to enhance your fun. When it's time to relax, come inside and kick back on the plush sofa and enjoy the state-of-the-art entertainment center complete with Dolby® digital seven speaker surround sound system. Outstanding value is packaged together with full featured amenities to create the perfect living environment for your lifestyle.



### **Bathroom & Bedroom**

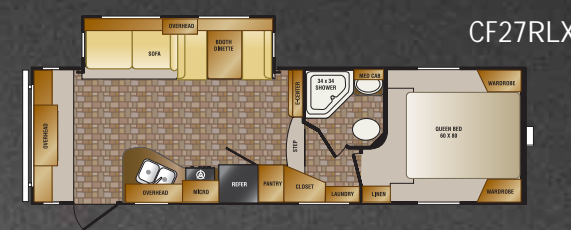
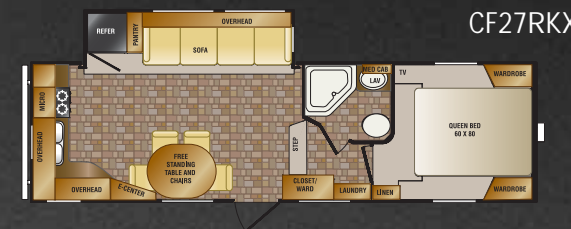
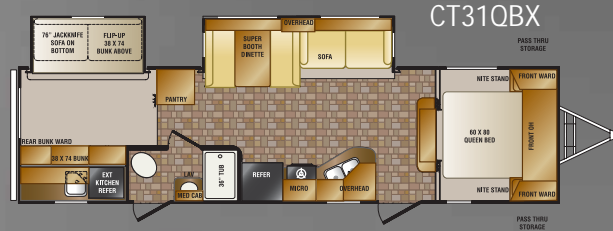
You won't find any compromises in the Cruiser bathroom - only the conveniences of home such as this roomy corner shower with glass door, overhead skylight, and lavatory with mirrored medicine cabinet.

The Cruiser bedroom abounds in personal comfort and storage space. The deluxe 60" x 80" queen bed is flanked with overhead reading lights for bedtime relaxation and lifts up to reveal hidden storage underneath.

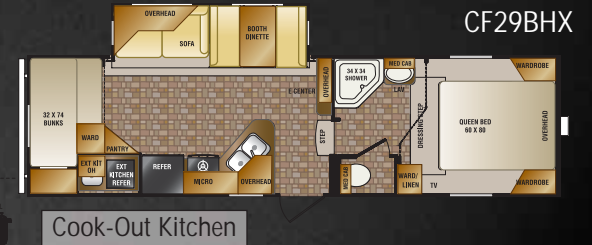
# CRUISER

## Travel Trailer & Fifth Wheel Floor Plans

### Travel Trailer Floor Plans



CF29BHX Cook-Out kitchen



### Specifications

Specifications	CT27BHX	CT28RKX	CT29RLX	CT30REX	CT31QBX	CF27RKX	CF27RLX	CF28MKX	CF29BHX	CF30KRX
Dry Weight	6537	7073	7041	8053	7995	7153	7277	8114	7808	8476
Carrying Capacity	4345	3811	3975	2899	2945	4559	4397	3628	3834	3190
Hitch Weight	722	724	856	792	780	1552	1514	1582	1482	1506
Axle Weight	5815	6349	6185	7261	7215	5601	5763	6532	6326	6970
Exterior Length	31' 0"	32' 10"	33' 3"	33' 3"	35' 11"	29' 6"	29' 5"	29' 11"	30' 11"	31' 11"
Exterior Height with A/C	11' 4"	11' 6"	11' 6"	11' 6"	11' 6"	11' 10"	11' 8"	11' 10"	11' 8"	11' 10"

**Tanks:** Fresh water capacity: 58 gallons • Black water capacity: 40 gallons • Grey/galley capacity: 80 gallons



Cruiser Sahara shown

Multifunctional key FOB operates electric awning, outside lights, slide-outs and more. (optional)



\*R-values based with POLARTEC upgrade insulation package. All R-values are approximated using industry resources and are subject to change without notice.

(Cruiser Travel Trailer & Fifth Wheel)

### CONSTRUCTION STANDARDS

1. One-piece, rolled-edge rubber roof with 12 year warranty
2. 3/8" Plywood roof decking
3. 16" OC Aluminum truss roof rafters and tube floor joists
4. R-27 Fiberglass roof and R-28 floor insulation\*
5. Aluminum radius roof transition wrap
6. Full fiberglass front cap
7. 13,500 BTU ducted A/C • 30,000 BTU floor ducted furnace
8. Aluminum tube 16" OC studs for sidewalls, endwalls and slide rooms
9. Thermo-Foil (PolarTec Upgrade Insulation Package - optional)
10. R-15 Sidewall fiberglass insulation\*
11. 2 Layers of Luan board - staggered for seamless walls
12. Lamilux fiberglass exterior for easy maintenance
13. 8" Steel I-beam frame or 10" Steel I-beam frame (varies by floor plan)
14. 5/8" Lightweight tongue and groove plywood floor decking
15. Residential grade carpet with 1/2" foam carpet pad
16. Linoleum bathroom floor (freeze proof)
17. Power front jacks
18. Electric slide system(s) with individual room controls
19. Tires with white spoked rims (aluminum option shown)
20. 5,200 lb Axles
21. Fully enclosed, insulated underbelly with radiant heat

### EXTERIOR STANDARDS

22. Tinted safety glass windows
23. Scare light
24. Extended pin box shown (FW only)
25. Swing-out entry assist handle
26. Roof ladder
27. Extra large capacity cargo storage
28. Patio awning
29. 30" Radius entry door with screen
30. Triple entry step
31. Dual 30 lb LP tanks
32. Slam latch baggage door

EZ lube hubs  
 Black tank flush  
 Enclosed gate valves



# CRUISER

## Sahara

### Model CF330SS

Elegance is no mirage in the Cruiser Sahara. From its full body color exterior to its cultivated beauty inside, you'll experience a wonderful new reality of RV living. Unique design features create a home-like ambiance that includes a graceful curved stairwell that leads up to the flush floor master bedroom.

The ample interior is furnished throughout with residential inspired furniture along with special touches such as a mood-setting fireplace and state-of-the-art entertainment center.

*(Bedroom shown with Ocean décor)*







**Model CF330SS with Ocean décor and upgrade Leather Package**

This island kitchen is an oasis of convenience any cook will appreciate with plenty of open counter space featuring solid surface countertops and deep beautifully crafted kitchen cabinets for storage. The dining area is located in the flush floor slide-out with a free standing dinette set against the backdrop of the large picture window. Also shown is optional leather furniture, adding a luxurious enhancement to the living area.



**CF345RF shown with Nutmeg décor**

This modern, residential layout comes standard with a 40" HD LCD TV and fireplace. Cruiser Patriot/Provincial models have been designed with all the features of a full profile fifth wheel without the weight. These floor plans feature flush floor bedrooms, 90" angled main living room slide-out and washer/dryer prep.



CF345RF Large kitchen island and wide staircase to the upper deck



CF345RF Main slide-out with 90" angled ceiling in Patriot/Provincial models adds 40% larger windows – an industry first!



CF345RF Washer/dryer prep standard on all Patriot/Provincial models



CF345RF Entry closet



CF345RF Bedroom

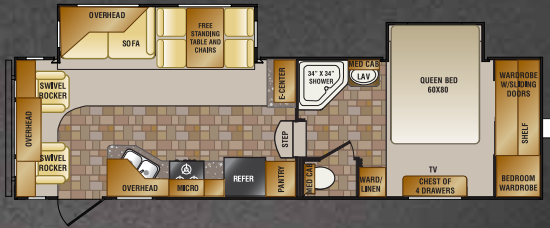


CF345RF LED lighting standard on all Cruiser models

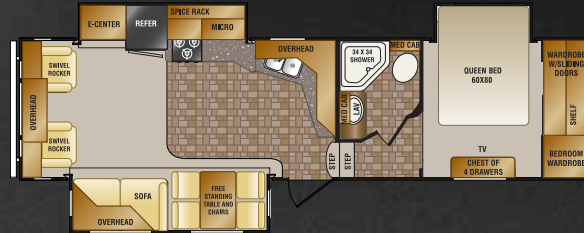
# CRUISER Sahara

## Fifth Wheel Floor Plans

CF280RL



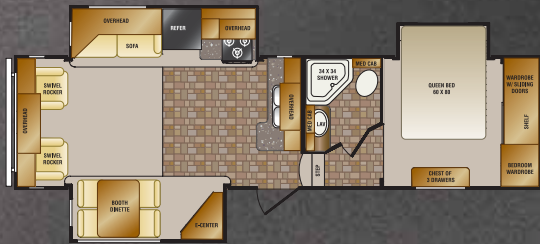
CF300SK



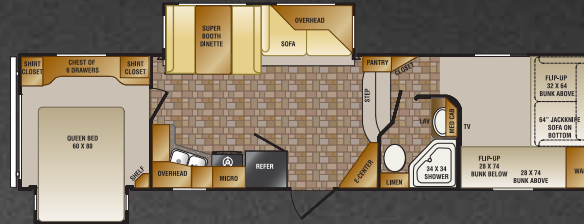
CF320CK



CF300ES



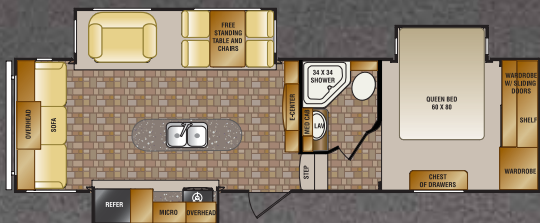
CF310QB



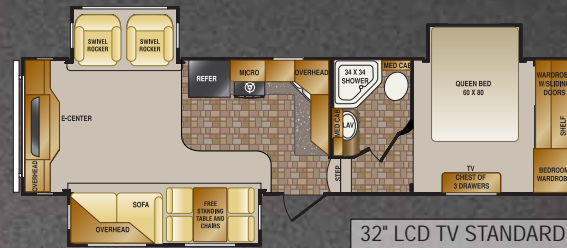
CF320MK



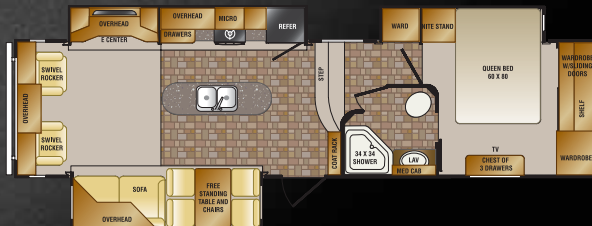
CF300CK



CF310RE



CF330SS

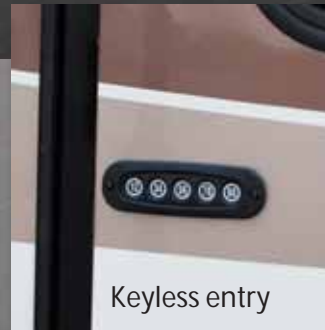
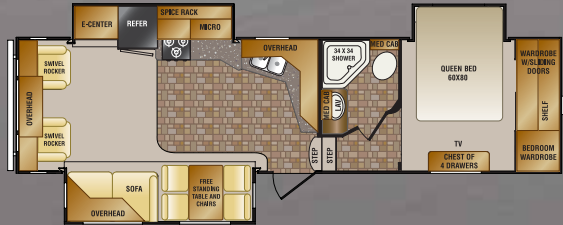


32" LCD TV STANDARD

Specifications	CF280RL	CF300ES	CF300CK	CF300SK	CF310QB	CF310RE	CF320CK	CF320MK	CF330SS
Dry Weight	8424	8998	9052	9082	8607	9030	9534	9252	9761
Carrying Capacity	3796	3384	3462	3216	3686	3100	2828	2980	2581
Hitch Weight	1820	1982	2114	1898	1893	1730	1962	1832	1942
Axle Weight	6604	7016	6938	7184	6714	7300	7572	7420	7819
Exterior Length	30' 11"	32' 2"	32' 10"	32' 10"	34' 11"	32' 11"	33' 11"	33' 11"	33' 11"
Exterior Height with A/C	12' 6"	12' 6"	12' 6"	12' 6"	12' 6"	12' 6"	12' 6"	12' 6"	12' 6"

# Cruiser Patriot & Provincial Floor Plans

CF305SK

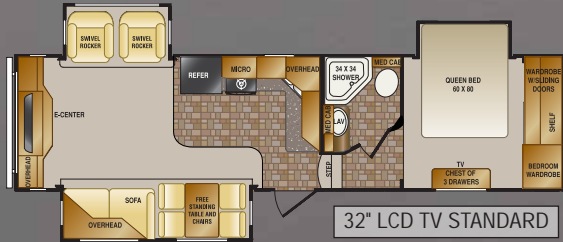


Keyless entry



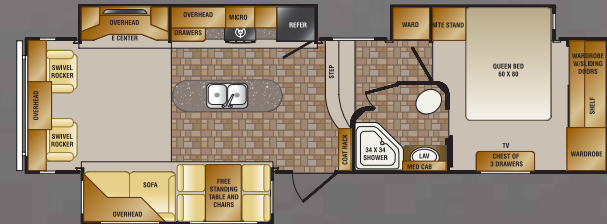
Memory Foam Mattress  
Low maintenance  
High quality residential design  
Foam core engineered for improved comfort

CF315RE

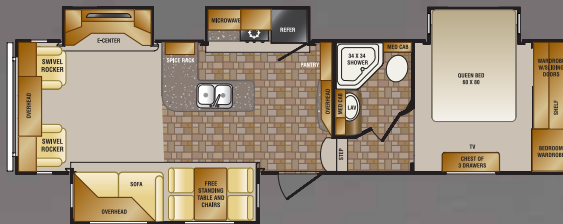


32" LCD TV STANDARD

CF335SS



CF325CK



CF345RF



40" LCD TV STANDARD FIREPLACE STANDARD



All models feature flush floor bedrooms

## Tank Capacities:

Fresh water capacity: 58 gallons

Black water capacity: 40 gallons

Grey/galley capacity: 80 gallons

## Specifications

	CF305SK	CF315RE	CF325CK	CF335SS	CF345RF
Dry Weight	9090	9206	9703	9741	9898
Carrying Capacity	3215	3048	2820	2639	2410
Hitch Weight	1905	1854	2123	1980	1908
Axle Weight	7185	7352	7580	7761	7990
Exterior Length	32' 10"	32' 11"	33' 11"	33' 11"	33' 11"
Exterior Height with A/C	12' 6"	12' 6"	12' 6"	12' 6"	12' 6"





CRUISER



Cruiser Patriot/Provincial shown with available rear cap and paint package



**IntelliJacks™**  
One touch automated connecting and disconnecting system for your fifth wheel.

**Coach-Net**  
RV Membership Plans



**2+5**  
YEAR LIMITED WARRANTY.

**THOR**  
INDUSTRIES, INC.

Thor Industries' strong financial position and industry leadership are your assurance that we will be here to serve you for years to come.

your local dealer



**888-226-7496**  
WWW.CROSSROADSRV.COM