



# SEVILLE

SEVILLE FIFTH WHEELS



BUILT FOR THE LONG HAUL

# SEVILLE



VF35CK Living area shown with standard fireplace and 42" LCD TV (available leather sofa also shown)

Commanding elegance and prestige inside and out, the Seville was developed with luxury in mind. Equipped with all the features, options and amenities you could wish for in a fifth wheel. In the Seville, choose the interior to fit your lifestyle, with five floor plans, two wood finishes (Glazed Maple or Cherry) and three designer inspired interior decor choices. For maximum entertainment, the large 42" LCD TV (Standard in the 34CK and 35CK) is wired to the home theater system, which includes a five disc changer and flush mount ceiling speakers with surround sound.

Exquisite wood cabinetry gives the kitchen an unmatched elegance. Choose between two beautiful finishes, both with solid wood raised panel doors and nickel finished hardware. The Seville kitchen also features available solid surface Corian® countertops with sink covers, as well as convenience of the large 17 cubic foot refrigerator with ice maker, three burner range with oven and residential microwave.

Luxury and comfort come together in the slide-out bedroom – with a pillow top queen bed, dresser with full pull-out drawer guides, wardrobe and spacious overhead cabinets. There are plenty of designer touches, including bedspread with pillows, window treatments and day/night shades.





VF35CK Kitchen with Glazed Maple and available Corian® counter tops

SOLID WOOD INTERIORS WITH **CHERRY OR MAPLE FINISH**

SEVILLE WARRANTY

The best warranty in the industry. For details, please visit our web site at [www.crossroadsrv.com](http://www.crossroadsrv.com). We invite you to compare our quality, value, service program and 2+5 warranty plan with those of our competition. You'll find we are unsurpassed in all four.



VF35CK Bedroom shown with cherry finish trim and cabinetry

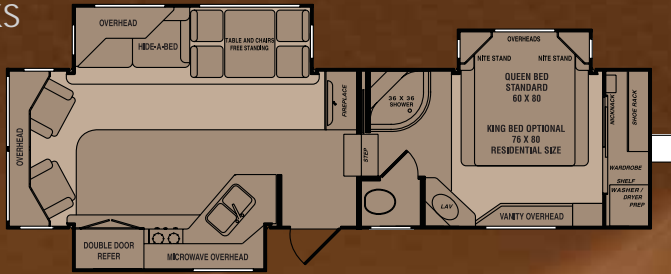


VF35CK Bedroom wardrobe and storage

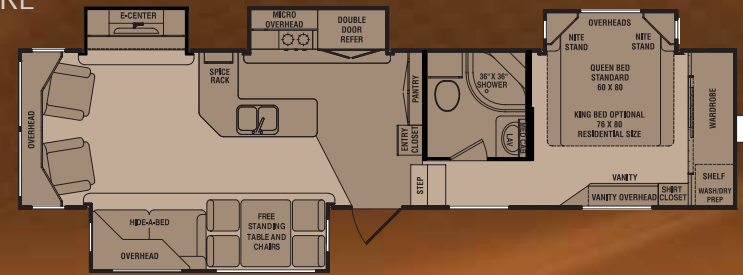


Seville fifth wheels are also available in a full body paint package

VF32KS



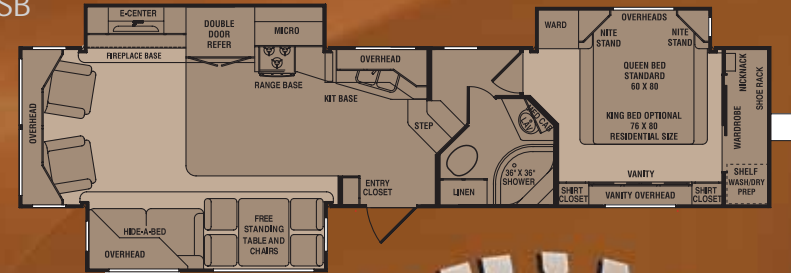
VF35RL



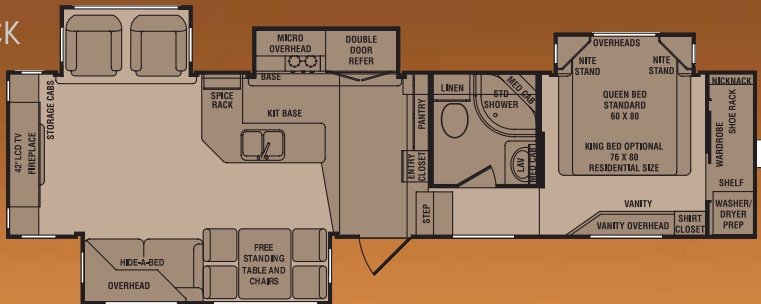
VF34CK



VF36SB



VF35CK



Solid Six Sided Aluminum Super Structure

SPECIFICATIONS	VF32KS	VF34CK	VF35CK	VF35RL	VF36SB
Dry Weight	10442	10802	11269	11405	11410
Carrying Capacity	5074	4719	4382	4491	4486
Hitch Weight	2155	2160	2290	2535	2535
Axle Weight	8287	8642	8979	8870	8875
Exterior Length	33' 5"	36' 8"	37' 2"	38' 3"	38' 8"
Ext. Height with AC	12' 9"	12' 9"	12' 9"	12' 9"	12' 11"
Tires	ST235/80R16E	ST235/80R16E	ST235/80R16E	ST235/80R16E	ST235/80R16E

Tanks

- Fresh water capacity - 58 gallons
- Black water capacity - 40 gallons
- Grey/galley capacity - 80 gallons

Standards stated throughout this brochure are partial lists only. See your dealer or visit [www.crossroadsrv.com](http://www.crossroadsrv.com) for a complete listing.



CrossRoads



### CONSTRUCTION STANDARDS

1. One-piece, rolled edge rubber roof with 12 year manufacturer's warranty
2. 3/8" plywood roof decking for full walk-on roof
3. **16" OC Aluminum truss roof rafters**
4. R-14 Fiberglass roof insulation
5. Aluminum radius roof transition wrap
6. Full fiberglass front & rear caps
7. 13,500 BTU ducted A/C with remote control
8. **Aluminum tube 16" OC studs for sidewalls, endwalls & slide rooms**
9. Thermo-Foil (PolarTec Insulation upgrade - optional)
10. R-7 Sidewall fiberglass insulation
11. 2 Layers of Luan board – staggered for seamless walls
12. High gloss gel coat finish
13. 10" I-Beam frame
14. **16" OC Aluminum tube floor joists**
15. R-14 Fiberglass floor insulation
16. 5/8" tongue and groove plywood floor decking
17. Residential rebond carpet pad
18. Residential grade carpet
19. Residential Linoleum
20. Power front jacks
21. Electric slideout system(s) with individual room controls
22. 16" Radial tires with aluminum rims
23. 7,000 lb Axles
24. Fully enclosed, insulated underbelly with radiant heat
25. Z frame with flush bedroom floor

### EXTERIOR STANDARDS

26. Solar reflective windows
27. Backlit Seville logo
28. Scare light on both sides
29. Rota-Flex pin box by Trail-Air
30. Large entry assist handle
31. Roof ladder
32. Extra large capacity cargo storage
33. Exterior baggage doors on both sides
34. Dual LP tanks
35. Electric Patio Awning

- Lights in all storage compartments
- Satellite and TV hookup
- Outside shower

### PolarTec (Available Upgrade Insulation Package)

CrossRoads RV tested its products in the Dometic extreme temperature chamber. With superior construction and higher R-Values, CrossRoads products exceeded the competition. The furnace in our products cycled longer at extreme cold temperatures than our competitors. In some cases, our competitor's furnaces didn't even cycle at all.







VF32KS Living area shown with Copper Décor



VF35CK Sofa and free standing table with chairs shown with Mocha Décor

## DÉCOR CHOICES

**Mocha** – with rich, warm coffee tones through the flourished pattern

**Copper** – a circular and moving design formed with differing hues of metallic copper

**Cabernet** – complementary accent patterns of tan and burgundy, suggesting a fine, lush wine



Cabernet Décor



VF35CK Living area shown with standard LCD TV and fireplace (shown with cherry wood finish)



# SEVILLE STANDARD FEATURES



www.crossroadsrv.com



One-piece shower surround



Large pantry (VF35CK, VF35RL)



72" Skyview window



Solar reflective windows



Lighted triple step entry



Full extension ball bearing drawers



Enclosed utility management compartment



Exterior pass-thru storage compartment



Backlit front cap (easy to find in campground)



All hardwood cabinets with hidden hinges



Under cabinet pull-out waste basket



The largest made-for-RV refrigerator ever!  
17 Cubic foot refrigerator with ice maker



Standard Trailair Equa-Flex™ Equalizer suspension ensures a smoother ride, more stable towing and improved coach and vehicle safety. On broken pavement at 55 mph, Equa-Flex™ reduced G-force up to 89% (360Hz) at the trailer frame. It's the ultimate rough road remover!



Standard Trailair Rota-Flex™ Pin Box. This pivoting head pin box utilizes a proprietary rubber compound that dramatically reduces fore to aft movement, or "chucking", typically felt inside the tow vehicle.



90° Towing radius



# SEVILLE STANDARD FEATURES

## Exterior Standards

- Satellite prep on the roof
- TV antenna with cable input
- Exterior utility compartment
- High gloss exterior metal skirting (white)
- Non-slip rubber flooring in pass through storage
- 50 AMP Detachable power cord
- 75 AMP Power converter
- Exterior black tank flush
- Outside shower
- LED Clearance lights
- Rear ladder
- Black tank flush

## Living Standards

- Fireplace wall with the look of slate and Maple or Cherry mantel (most models)
- Residential style hide-a-bed sofa
- Swivel/rocker recliner (leather is standard)
- 72" Skyview window above living room slide
- Flush floor slide-out with upgraded fascia
- Home theater system with 5 disc changer
- Flush mount ceiling speakers for surround sound
- 42" LCD TV (VF34CK, VF35CK only) with adjustable arm
- LCD TV (size varies by floor plan) with adjustable arm
- Fireplace (most models)
- Satellite/ cable hook-up inside and out
- Ceiling fan

## Décor Standards

- Day/night shades throughout
- 6 Panel interior passage doors
- Ceiling cove throughout
- Brushed nickel hardware and fixtures throughout

## Kitchen Standards

- 17 cu ft Four door refrigerator with black front
- 22" Oven with 3 burner stovetop and flush mount range cover
- Residential size microwave
- Formica countertop with backsplash
- Countertop edging
- Raised panel cathedral cabinet doors with hidden hinges
- Residential ball bearing drawer guides
- Faucet with pull-out sprayer & water purifier
- Sink covers
- Pull-out Pantry
- Lazy Susan (varies by floor plan)
- Pull-out waste basket under kitchen sink
- Kitchen soffits with flush mount lighting
- Free standing dinette with hide-a-leaf & chairs with flip-up storage

## Bedroom Standards

- Queen size pillow top mattress 60" x 80"
- Residential size headboard
- Prep for second A/C
- Extra storage found in lift-up bed with gas struts
- Bedspread - coordinated fabric with decor choice
- Laundry chute to cargo storage
- Washer/ dryer prep
- TV shelf and hook-up
- Security safe

## Bath Standards

- 36" shower with surround glass door and skylight
- 10 Gallon gas/electric water heater with DSI
- White porcelain foot flush toilet
- EZ Winterize kit
- Water heater bypass
- Power vent

## Safety Standards

- Fire extinguisher
- LP Detector
- Smoke detector

Standards stated above is a partial list only. See your dealer or visit [www.crossroadsrv.com](http://www.crossroadsrv.com) for a complete listing.

your local dealer

**THOR**  
INDUSTRIES, INC.

Thor Industries' strong financial position and industry leadership are your assurance that we will be here to serve you for years to come.

Dry & hitch weight based on standard equipment only. Carrying capacity reduced to reflect maximum available options per unit. Standards, options & specifications subject to change without notice. 06/09 © 2009 CrossRoads RV

## Optional Equipment

### Exterior

- Aluminum - spare tire and carrier
- PolarTec upgrade insulation package
- Safety windows
- Insulated windows
- Slide-out awnings
- 12 volt battery (2)
- Full body paint package

### Interior

- Lexus leather sofa
- Dinette booth
- Desk chair
- King size bed with pillow top 76" x 80"
- Fantastic fan(s)
- Fireplace (standard on most models)
- Central vac system
- Convection microwave
- Corian® countertop
- 15,000 BTU A/C
- 13,500 BTU A/C - bedroom
- 16 Gallon gas/electric water heater with DSI
- Glazed cherry interior

### Executive Package (standard)

- 17 Cubic foot residential refrigerator
- LCD TV
- Ball bearing drawer glides
- High gloss gel coat
- Electric awning
- 16" Aluminum wheels
- Solar reflective windows
- Satellite prep on roof



**CrossRoads**

**888-226-7496**

[www.crossroadsrv.com](http://www.crossroadsrv.com)