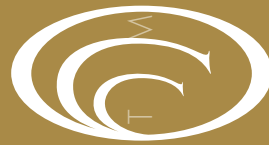


MOTORCOACHES
FINEST
THE WORLD'S



COUNTRY COACH

2 0 0 9 A F F I N I T Y 7 0 0 C U S T O M

2009 AFFINITY 700 CUSTOM

The Affinity 700 Custom was born of Country Coach's client requests. Individuals searching for an expression of themselves, a graceful machine that embodies their passion for the highest levels of quality and grace, find their way to the Country Coach Affinity 700 Custom. No two are alike, yet each is exquisite in its own right, and all share key features. Step behind the wheel, and experience the raw power of the just-released optional Cummins ISX 650hp powerplant paired with the smooth Allison transmission. After flattening hills on the way to your destination, turn in your seat to discover a breathtaking new

interior, showcased by the debut of the Country Coach-exclusive coffered ceiling. Exquisitely handcrafted materials grace a recessed ceiling design for the ultimate function of the coach's cooling system, as well as the sheer beauty of residential design. Explore each elegantly engineered floorplan, including the innovative new Diamond Mountain featuring a huge slide room and customer-designed desk configuration, and the popular Russian River bath-plus-one design. Most of all, in the 2009 Affinity 700 Custom discover a reflection of your most earnest travel aspirations, embraced in the comfort of residential style.

2009 AFFINITY 700 CUSTOM **NEW FOR 2009** 2009 AFFINITY 700 CUSTOM

New Standard Features

- Powertrain: Caterpillar® C15 engine paired with Caterpillar CX31 transmission, producing 625 HP at 2100 RPM and 1900 ft-lbs torque at 1200 RPM (meets 2007 EPA emissions requirements)
- DISH Network® HD or DIRECTV® non-HD receiver for in-motion satellite system
- Ottoman with storage
- Pull-out galley faucet with matching soap dispenser
- Choice of Contemporary or Classic-style coffered ceiling design
- 45' Diamond Mountain floorplan with desk built into longer A slide-out

New Options

- ² Two Logitech® Harmony® 1000 Advanced Universal Remotes preprogrammed for multiple A/V systems
- ² On-demand hot water in galley
- ² Living room overheads
- ² 120-volt bedroom ceiling fan
- ² Tile and radiant floor heating in bedroom (rear bath floorplan only)
- ² Ultimate factory delivery
- ² 42" LCD HD mid-coach TV available in Diamond Mountain
- ² 32" LCD HD overhead dash TV available with mid-coach TV option in Diamond Mountain

Chassis Specifications

- w **DynoMax® chassis:** semi-monocoque construction of 8" x 3" x 1/4" steel-tube with welded components
 - 15,000 lb receiver hitch with electrical connector and chrome cover
 - 2-year/unlimited-mile chassis warranty
- w **40' and 45' chassis:**
 - GVWR – 52,000 lbs
 - GCWR – 67,000 lbs
- w **Wheelbase:** 40' – 241", 42' – 265", 45' – 289"
- w **Powertrain:** Caterpillar® C15 engine paired with Caterpillar CX31 transmission, producing 625 HP at 2100 RPM and 1900 ft-lbs torque at 1200 RPM (meets 2007 EPA emissions requirements)
 - Engine features:*
 - 15.2 liters (928 cubic inches)
 - Caterpillar multi-stage engine compression brake with brake light activation
 - Electronic Control Module (ECM)
 - 5-year/200,000-mile engine warranty
 - Transmission features:*
 - Caterpillar CX31 transmission with PTO
 - Six speed automatic
 - Keypad electronic shifter with digital display
 - 5-year/200,000-mile transmission warranty
- 2 **Powertrain:** Cummins® ISX engine paired with Allison 4000 MH transmission, producing 600 HP at 1800 RPM and 1850 ft-lbs torque at 1400 RPM (meets 2007 EPA emissions requirements)
 - Engine features:*
 - 14.9 liters (912 cubic inches)
 - 3-stage engine brake with brake light activation
 - Electronic Control Module (ECM)
 - Diagnostic key switch
 - 5-year/100,000-mile engine warranty
 - Transmission features:*
 - Allison 4000 MH transmission with PTO
 - Six speed automatic with two overdrive gears
 - Keypad electronic shifter with digital display
 - 5-year/unlimited-mile transmission warranty (with TranSynd™ fluid)

- 2 **Powertrain:** Cummins® ISX engine paired with Allison 4000 MH transmission, producing 650 HP at 1900 RPM and 1950 ft-lbs torque at 1300 RPM (meets 2007 EPA emissions requirements)
 - Engine features:*
 - 14.9 liters (912 cubic inches)
 - 3-stage engine brake with brake light activation
 - Electronic Control Module (ECM)
 - Diagnostic key switch
 - 5-year/100,000-mile engine warranty
 - Transmission features:*
 - Allison 4000 MH transmission with PTO
 - Six speed automatic with two overdrive gears
 - Keypad electronic shifter with digital display
 - 5-year/unlimited-mile transmission warranty (with TranSynd™ fluid)
- w **Driveline:** Dana Spicer® SPL 250 series
- w **Drive axle:** Dana® with 4.30 differential ratio
- w **Suspension:**
 - *Front* – Dana independent front suspension with double wishbone construction and full air suspension system, anti-sway bar, and Koni® shock absorbers
 - *Rear* – Ridewell drive and tag axle (raise/lower) air suspension system with six air springs and Koni shock absorbers
- w **Steering:** Fully-integral, full time hydraulic power steering gear with electrically adjustable tilt and telescoping steering column with Intellitac memory
- w Electronic cruise control
- w Williams Controls adjustable position throttle and brake pedals with Intellitac memory
- w **Service brakes:** Full air disc brakes with ABS and Automatic Traction Control (ATC) (17" x 1.75" air discs on all axles)
- w **Tires:** Steel-belted radials 315/80R x 22.5"
- w **Wheels:** 9" x 22.5" aluminum alloy wheels at all positions
- w **Battery:** Four group 31 engine cranking batteries with 12-volt disconnect
- w **Fuel capacity:** 150 gallons (dual fuel fills, driver and passenger sides)
- w Fresh oil reservoir and pump, hydronic engine block preheat, and sight glass for coolant tank

Construction Highlights

- w **Exterior width:** 102"
- w Steel-tube cage structure
- w Vacuum-bonded roof, walls and floor with expanded polystyrene insulation
- w R20-value roof insulation
- w All fiberglass exterior

- w One-piece molded fiberglass roofcap
- w **Exterior riding height:** 12' 10" (including roof air; height varies with satellite dish)
- w **Finished interior height:** 83-3/4"
- w Sound and vibration dampening material throughout

Driver Compartment Amenities

- w 6-way power-adjustable massage/heated driver and passenger seats with two-position memory, 3-point restraint, adjustable headrests and 2-way lumbar support (driver seat offers a sliding seat cushion and the passenger seat provides a power footrest)
- 2 "Buddy" power passenger seat
- w Species hardwood overhead dash with storage
- w Custom contoured Ultraleather® dash
- w Two 12-volt receptacles in dash
- w **Data-bus instrumentation includes:** speedometer, tachometer, air pressure, oil pressure, transmission temperature, volt meter, water temperature, fuel level, odometer, trip odometer, and indicator lights
- w **Intellitac memory system includes:** adjustable steering column, adjustable pedals, and driver seat
- w SilverLeaf VMS 440 CL digital engine monitor/travel information center with auto generator start, auto temperature control, rear-view monitor, and optional weather station
- 2 Garmin® GPS navigation system with XM Smart Antenna and color LCD touch-screen interface (XM weather, XM traffic, and XM radio available with subscription)
- w Double-DIN touch-screen color rear/side-view monitor with Kenwood AM/FM/satellite radio stereo and compact disc controls with remote 10-disc CD changer, MP3 player input, Bluetooth® interface, and two speakers
- w Built-in valet tray for driver and passenger
- w Single-piece wrap-around windshield with shade band
- 2 Powered driver's toll window
- w Radial single-motor windshield wipers with delay and washers
- w Heating/cooling/defrost unit in dash (dual zone and dual blower controls for driver/passenger)
- w Ducted overhead defrost system
- w Powered roller day/night shade system with solar protection and total light-blocking capabilities
- w Back-up alarm
- w Dual map lights

- w 18" SmartWheel® burl wood steering wheel with controls for horn, head light flash, marker light flash, cruise functions, and wipers
- w SmarTire® II tire monitoring system
- w Bound floor carpets for entry steps
- w Tiled entry landing
- w Tile flooring around driver's area
- w Tiled entry stepwell and stepwell slide cover
- w Entry stepwell storage drawer
- w Entry door interior assist grip

Front Entertainment

- w 46" LCD high definition TV in overhead dash with seven ceiling speakers and subwoofer
- 2 32" LCD high definition TV in overhead dash with mid-coach TV option (floorplan dependent)
- 2 Living room TV lift with 42" LCD high definition TV, integrated computer table, with five ceiling speakers and subwoofer
- 2 42" LCD high definition mid-coach TV (floorplan dependent)
- 2 Blu-ray Disc DVD player
- w Yamaha® digital home theater system with 7.1 surround sound and DVD player (5.1 surround sound with TV lift option)
- w iPod interface adapter
- w In-motion satellite system and high definition DISH Network® HD receiver in living room (TracStar®) (includes additional receiver in bedroom)
- 2 In-motion satellite system and DIRECTV® receiver in living room (non-HD) (includes additional receiver in bedroom)
- w Infrared remote extender
- w Factory-configured universal remote for A/V systems
- 2 Two Logitech® Harmony® 1000 Advanced Universal Remotes preprogrammed for multiple A/V systems

General Conveniences

- w Custom crafted cabinetry (cathedral-arched raised panel or raised panel) and woodwork with semi-gloss finish
- w **Choice of cabinetry:**
 - Oak
 - Light cherry
 - Medium cherry
 - Dark cherry
 - Hickory
 - Maple
 - Walnut
- 2 Espresso Patina finish on light cherry or maple cabinetry
- w Decorative knobs and pulls

- w Self-closing drawer guides
- w Hardwood pocket doors
- w Padded vinyl ceiling
- w Decorative ceiling console with recessed halogen lights and whisper air conditioning vents
- w **Choice of coffered ceiling design:**
 - Contemporary
 - Classic
- 2 Custom coffered ceiling design with wood trim
- 2 Custom interior package
- 2 Custom interior décor kit (preset)
- w Designer-coordinated wallpaper throughout
- w Halogen lighting throughout
- w Rope lighting at galley and vanity toe-kicks, living room/dining area/bedroom window boxes, slide-out room soffits and lighted valances
- w Decorative window boxes and valances in living room, dining area and bedroom with solid-surface sills
- w Electric Vienna shades
- w Ceiling and wall sconce lighting with dimmers
- w Radiant floor heating in galley and bath
- 2 Granite countertops with wood windowsills in galley, bath, and bedroom (includes stainless steel sink in galley)
- w Pre-wired for solar panels
- w Washer/dryer combo with tiled floor area
- 2 Stacked washer and dryer with tiled floor area
- 2 Super storage area with three sliding trays (replaces washer/dryer combo)
- w Decorative glass inserts (up to four standard, location specific)
- w Ironing board
- w Pull-out clothes hamper with two bags
- w Ottoman with storage
- w Portable vacuum cleaner
- 2 Dirt Devil® central vacuum system (replaces portable vacuum)
- w Telephone jacks (two in living area, one in bedroom, and one in storage bay)
- w Stepwell light
- w Power step slide cover
- w Burglar alarm (inside/outside protection) with key fob controlled keyless entry and security light activation
- w Smoke detector
- w Carbon monoxide detector
- w Fire extinguisher

- w **SilverLeaf house monitoring system operates:**
 - 120 and 12-volt devices
 - Controls inverter/converter
 - Monitors holding tank levels
 - Fresh-water fill
 - Generator with auto gen start
- 2 SilverLeaf weather station
- w Double bunk beds (floorplan dependent)
- 2 Triple bunk beds (floorplan dependent)
- 2 Walk-in closet (replaces mid-coach half bath) (floorplan dependent)
- w Coach Information Kit: Owner's Guide, OEM manuals, chassis parts list
- w Emergency roadside service (first year paid by Country Coach)
- 2 Factory delivery
- 2 Ultimate factory delivery

Living Room Amenities

- w **Choice(s) of the following:**
 - Fold out sofa bed
 - Hide-away sofa bed
 - Euro recliner with ottoman and occasional table
- 2 **Choice(s) of the following:**
 - J sofa bed
 - Fold out J sofa bed
 - Hide-away J sofa bed
 - Office suite desk and Euro recliner with ottoman
- 2 Additional Euro recliner with ottoman (floorplan dependent)
- 2 Computer table with charging center (replaces occasional table)
- 2 Area rug
- 2 Full tile floor
- 2 Radiant floor heating (available with full tile option)
- 2 Living room overheads
- 2 Decorative glass inserts in desk overhead (set of four) (floorplan dependent)

Galley Amenities

- w Polished solid-surface countertops with edge detail
- Solid-surface splashguard located at forward end of countertop
- Full tile backsplash
- w Double-bowl solid-surface sink with solid-surface covers
- w Pull-out faucet with matching soap dispenser
- 2 On-demand hot water faucet
- w Fan-Tastic Vent® thermostatically-controlled variable speed fan with rain sensor, insulated cover, and dome stop switch

- w Jenn-Air® 22 cu ft two door side-by-side electric refrigerator/freezer with icemaker and raised panel inserts
- w Advantium® Speedcook microwave/convection oven with power hood
- 2 Stainless steel appliance package (refrigerator door and Advantium oven)
- w Flush mounted 2-burner touch-pad controlled electric cooktop
- w Wood window box with mini blinds on galley window
- 2 Decorative glass insert in upper curio cabinet (floorplan dependent)
- 2 Decorative glass inserts in overhead galley/dinette cabinets (set of four)
- w **Dining area seating variations:**
 - Dining area wall cabinet and wall-mounted dining table with forward and rearward slide mechanism and two standing and two folding chairs
 - Wall-mounted café dinette
 - Sleeper café dinette
- 2 U dinette booth or J dinette booth (includes two folding chairs)
- w Tile flooring on main floor, carpet in slide-out rooms
- w Decorative dining area light
- w Pull-out bread board
- w Double slide utensil tray in top drawer of galley
- w Pull-out trash receptacle
- w Roll-out pantry trays (floorplan dependent)
- w Glassware cabinet with drink set
- w Galley ceiling lights controlled by dimmer switches
- w Convenience lights in lower galley cabinets
- 2 Wine rack in dinette wall module
- 2 Dish Drawer® dishwasher

Bath Amenities

- w Full rear bath and mid-coach half bath (Russian River only)
- w Polished solid-surface countertops with edge detail
- w Full tile backsplash
- w Solid-surface vanity sink(s) (under-mount)
- w Decorative light(s) bar for each vanity
- w Vanity overhead with mirrored doors
- w Towel ring at each vanity sink, towel bar and toilet tissue holder
- w Radius shower with solid-surface shower walls and decorative tile insert (S-curved shower in Saint Helena)
- w Etched glass shower enclosure
- w Insulated skylight above shower

- w Light in shower
- w Thetford Aria™ electric china toilet or Tecma china toilet (floorplan dependent)
- w Water pump switch
- w Fan-Tastic Vent® thermostatically-controlled variable speed fan with remote switch, rain sensor, insulated cover and dome stop switch
- w Hand-held pressure-balanced shower unit
- w Hardwood pocket doors with full-length mirror
- w Tile flooring
- w Mini-blinds with fabric valance on bath window
- 2 Corian® shower footrest

Bedroom Amenities

- w Queen bed 60"x77" with radius corners
- 2 King bed 72"x77" (floorplan dependent) (may eliminate a window in slide-out)
- 2 California queen bed 66"x77" (floorplan dependent)
- 2 Power adjustable bed with latex mattress
- 2 Air mattress in bedroom available in queen, California queen, and king sizes (not available on adjustable bed)
- 2 120-volt ceiling fan
- w Clothes dresser with drawers
- w Upholstered headboard
- w Bedspread with reversible sham and five décor pillows
- w Two nightstands with solid-surface countertops and edge detail with queen bed
- w Wardrobe with lighting and cedar panel on wardrobe shelf (wardrobe shelf floorplan dependent)
- w French style wood wardrobe doors with mirror inserts
- 2 Decorative glass inserts in bed overhead (set of four)
- 2 Additional decorative glass insert in bed overhead (floorplan dependent)
- w Wall sconce lighting
- w **Intellitec remote switching system with light dimming feature includes:** generator start/stop, curb lights, rear flood lights, camera security, and over-the-road A/C blower
- w 32" LCD high definition TV with digital home theater system with DVD player, and 5.1 surround sound
- w Additional satellite receiver in bedroom
- w Adjustable reading lights
- w Built-in safe with combination lock
- w Telephone jack
- w Carpet

- 2 Tile and radiant floor heating in bedroom (rear bath floorplan only)
- w Over-the-road 15,000 BTU air conditioning cooling unit

Heating and Cooling Systems

- w **Multi-zoned temperature control center controls the following:**
 - Diesel-fired 50,000 BTU Aqua-Hot® 650 hydronic heating system with two 2000-watt electric elements
 - Three 15,000 BTU low-profile roof mounted air conditioners with heat pumps
- w **Heating and cooling system for dash area and cooling system for bedroom:**
 - A/C, heating, and defrost system with separate dual zone controls for driver/passenger (45,000 BTU heating, 19,000 BTU cooling)
 - Over-the-road A/C in bedroom
- w Front roof AC operated from inverter

Power Sources

- w 320 amp alternator
- w 12-volt battery boost system
- w Automatic low-voltage generator start
- w Onan® 12.5 kW "quiet" liquid-cooled diesel generator with remote start/stop, on electric roll-out
- w Two 3000-watt solid state, Xantrex® RS3000 true sine wave inverter/converters
- w Six AGM 8D domestic deep cycle batteries on roll-outs
- w Four group 31 chassis deep cycle engine cranking batteries on roll-out
- w 12-volt interior disconnect switch
- w 50-amp shore cord on power reel with 30-amp adapter
- w 50-amp surge protector with transfer switch
- 2 400 watt solar panels

Plumbing Features

- w **Stainless steel, heated plumbing bay includes:**
 - Retractable, cold water hand-held spray fixture
 - Electric fresh-water low-point drain valve
 - Pressure regulated city-water to water-tank fill
 - Electric dump valves
 - Sewer hose, hose adapter, and storage for both
 - Hot and cold faucet
 - Soap dispenser
 - Four LED lights
 - Electric fresh-water hose reel in plumbing bay
 - Lighted logo
 - Telephone and cable TV hook-ups

- w Aqua-Hot® 650 hydronic water heating system with electric back-up
- w 12-volt on-demand water pump
- w Four water pump switches located in galley, main vanity, enclosed toilet vanity, and plumbing bay
- w Black and gray water tank flush system
- w Total house water filtration system
- 2 RV Sani-Con® tank drain system

Tank Capacities

- w 95 gallon fresh-water
- w 60 gallon gray-water
- w 60 gallon black-water
- w 150 gallon fuel

Exterior Conveniences

- w Powder-coated steel frame structure entry door with auto-hold, deadbolt, touch-pad keyless entry, key fob keyless entry, and screen door
- w Lighted entry door assist grip
- w Two patio lights
- w Two folding patio chairs
- w Security lighting on entry door key fob
- w Electric entry doorstep with automatic override at ignition
- w Retractable non-skid entry steps
- w **Standard awning package:**
 - Carefree® double electric patio awning package (120-volt power): two box awnings on passenger side with motion sensors
 - Girard® slide-out room cover on all slides
- 2 **Quad electric patio awning package (120-volt power):**
 - two additional electric box patio awnings on the driver side with motion sensors
- 2 Girard electric window awnings (120-volt power)
- 2 Carefree manual entry door awning
- w Power adjustable TV antenna with coaxial cable and 12-volt signal boost
- w Two 120-volt receptacles, 12-volt receptacle, coaxial cable, and telephone jack (storage bay)
- 2 Exterior entertainment center with 32" LCD high definition TV (replaces roll-out storage unit in the same bay)
- w Stereo speakers in bay wired to home theater system
- w Compressed-air supply hook-up in steering bay and rear of coach plus 25' air hose
- w Two chassis-mounted air horns

- w Thermostatically-controlled/heated remote control double head chrome side-view mirrors with adjustable arms
- w HWH® 4-point Computer Area Network (CAN) automatic air-leveling system
- w Daytime running lights
- w Fog lights
- w Four curb lights
- w Xenon headlights and LED taillights
- w Lighted, pass-through exterior storage bays with carpet lining and insulated doors
- w Electric bay door latches/locks
- 2 Dual-directional, full-bay roll-out storage tray(s)
- 2 Powered dual-directional, full-bay roll-out storage trays (bay size dependent)
- w Full rear mud flap with stainless steel trim
- w Key-One® system (one key for all locks)
- w Polished stainless steel exhaust pipe tips for generator, Aqua-Hot® 650, and engine
- w Undercoating
- w 3M® nose and entry door area protectant
- w Clear-coat exterior
- w Custom paint and design schemes
- 2 Custom bus style paint and design schemes
- w Flush mounted bronze tone reflective dual-pane insulated windows
- w Shore cord on power reel
- w 30" aluminum step ladder
- 2 Ladder with universal assist extension (floorplan dependent)
- w Two fuel cap holders
- w Retractable engine light with remote reel
- w Side-view cameras with dash and bedroom displays
- w Exterior stainless steel trim package
- 2 Sunscreen package with wiper covers
- 2 Driver-side and/or passenger-side ventless window in living room

Slide-Out Room Special Features

- w Push-button slide-activation control panels
- w Hydraulic slide-out room mechanisms
- w Pleated shade(s) on both forward slide-outs
- w Emergency hand-operated winch for slide-out rooms
- w Slide-out room toppers
- w Automatic travel lock when slide-out room is retracted

Slide-Out Room Dimensions

40' Sonoma Coast

SLIDE-OUT	WIDTH	DEPTH	HEIGHT
A. Living room	11'3"	2'8"	6'0"
B. Kitchen	12'8"	1'8"	5'8"
C. PS Bedroom	6'9"	1'2"	5'6"
D. DS Bedroom	9'2"	2'0"	5'1"

45' Alexander Valley

SLIDE-OUT	WIDTH	DEPTH	HEIGHT
A. Living room	12'7"	2'8"	6'0"
B. Kitchen	12'8"	1'8"	5'8"
C. PS Bedroom	5'10"	1'2"	5'6"
D. DS Bedroom	10'11"	2'0"	5'1"

45' Stag's Leap

SLIDE-OUT	WIDTH	DEPTH	HEIGHT
A. Living room	12'7"	2'8"	6'0"
B. Kitchen	16'1"	1'8"	5'8"
C. PS Bedroom	6'6"	1'2"	5'6"
D. DS Bedroom	10'11"	2'0"	5'1"

45' Saint Helena

SLIDE-OUT	WIDTH	DEPTH	HEIGHT
A. Living room	13'10"	2'8"	6'0"
B. Kitchen	12'8"	1'8"	5'8"
C. PS Bedroom	7'9"	2'0"	5'6"
D. DS Bedroom	6'7"	2'0"	5'1"

45' Silverado Trail

SLIDE-OUT	WIDTH	DEPTH	HEIGHT
A. Living room	12'7"	2'8"	6'0"
B. Kitchen	12'8"	1'8"	5'8"
C. PS Bedroom	5'10"	1'2"	5'6"
D. DS Bedroom	10'11"	2'0"	5'1"

45' Russian River

SLIDE-OUT	WIDTH	DEPTH	HEIGHT
A. Living room	12'7"	2'8"	6'0"
B. Kitchen	12'8"	1'8"	5'8"
C. PS Bedroom	5'10"	1'2"	5'6"
D. DS Bedroom	7'11"	2'0"	5'1"

45' Diamond Mountain

SLIDE-OUT	WIDTH	DEPTH	HEIGHT
A. Living room	16'5"	2'8"	6'0"
B. Kitchen	12'8"	1'8"	5'8"
C. PS Bedroom	5'10"	1'2"	5'6"
D. DS Bedroom	10'11"	2'0"	5'1"

Options Summary

- 2 **Powertrain:** Cummins® ISX engine paired with Allison 4000 MH transmission, producing 600 HP at 1800 RPM and 1850 ft-lbs torque at 1400 RPM (meets 2007 EPA emissions requirements)

Engine features:

- 14.9 liters (912 cubic inches)
- 3-stage engine brake with brake light activation
- Electronic Control Module (ECM)
- Diagnostic key switch
- 5-year/100,000-mile engine warranty

Transmission features:

- Allison 4000 MH transmission with PTO
- Six speed automatic with two overdrive gears
- Keypad electronic shifter with digital display
- 5-year/unlimited-mile transmission warranty (with TranSynd™ fluid)

- 2 **Powertrain:** Cummins® ISX engine paired with Allison 4000 MH transmission, producing 650 HP at 1900 RPM and 1950 ft-lbs torque at 1300 RPM (meets 2007 EPA emissions requirements)

Engine features:

- 14.9 liters (912 cubic inches)
- 3-stage engine brake with brake light activation
- Electronic Control Module (ECM)
- Diagnostic key switch
- 5-year/100,000-mile engine warranty

Transmission features:

- Allison 4000 MH transmission with PTO
- Six speed automatic with two overdrive gears
- Keypad electronic shifter with digital display
- 5-year/unlimited-mile transmission warranty (with TranSynd™ fluid)

- 2 "Buddy" power passenger seat

- 2 Powered driver's toll window

- 2 SilverLeaf weather station

- 2 Garmin® GPS navigation system with XM Smart Antenna and color LCD touch-screen interface (XM weather, XM traffic, and XM radio available with subscription)

- 2 Living room TV lift with 42" LCD high definition TV, integrated computer table, with five ceiling speakers and subwoofer

- 2 42" LCD high definition mid-coach TV (floorplan dependent)

- 2 Blu-ray Disc DVD player

- 2 32" LCD high definition TV in overhead dash with mid-coach TV option (floorplan dependent)

- 2 In-motion satellite system and DIRECTV® receiver in living room (non-HD) (includes additional receiver in bedroom)

- 2 Two Logitech® Harmony® 1000 Advanced Universal Remotes preprogrammed for multiple A/V systems

- 2 Custom interior package

- 2 Custom interior décor kit (preset)

- 2 Espresso Patina finish on light cherry or maple cabinetry

- 2 Decorative glass inserts in desk overhead (set of four) (floorplan dependent)

- 2 Decorative glass inserts in overhead galley/dinette cabinets (set of four)

- 2 Decorative glass insert in upper curio cabinet (floorplan dependent)

- 2 Decorative glass inserts in bed overhead (set of four)

- 2 Additional decorative glass insert in bed overhead (floorplan dependent)

- 2 Living room overheads

- 2 Area rug

- 2 Full tile living room floor

- 2 Radiant floor heating in living room (available with full tile floor option)

- 2 Tile and radiant floor heating in bedroom (rear bath floorplan only)

- 2 Granite countertops with wood windowsills in galley, bath, and bedroom (includes stainless steel sink in galley)

- 2 Computer table with charging center (replaces occasional table)

- 2 Additional Euro recliner with ottoman (floorplan dependent)

- 2 U dinette booth or J dinette booth (includes two folding chairs)

- 2 Triple bunk beds (floorplan dependent)

- 2 **Choice(s) of the following:**

- J sofabed

- Fold out J sofabed

- Hide-away J sofabed

- Office suite desk and Euro recliner with ottoman

- 2 Dirt Devil® central vacuum system (replaces portable vacuum)

- 2 On-demand hot water faucet

- 2 Stainless steel appliance package (refrigerator door and Advantium oven)

- 2 Wine rack in dinette wall module

- 2 Dish Drawer® dishwasher

- 2 Stacked washer and dryer with tiled floor area

- 2 Super storage area with three sliding trays (replaces washer/dryer combo)

- 2 Driver-side and/or passenger-side ventless window in living room

- 2 Corian® shower footrest

- 2 Walk-in closet (replaces mid-coach half bath) (floorplan dependent)

- 2 California queen bed 66"x77" (floorplan dependent)

- 2 King bed 72"x77" (floorplan dependent) (may eliminate a window in slide-out)

- 2 Power adjustable bed with latex mattress

- 2 Air mattress in bedroom available in queen, California queen, and king sizes (not available on adjustable bed)

- 2 120-volt ceiling fan

- 2 400 watt solar panels

- 2 RV Sani-Con® tank drain system

- 2 Girard electric window awnings (120-volt power)

- 2 **Quad electric patio awning package (120-volt power):**

- two additional electric box patio awnings on the driver side with motion sensors

- 2 Carefree manual entry door awning

- 2 Exterior entertainment center with 32" LCD high definition TV (replaces roll-out storage unit in the same bay)

- 2 Dual-directional, full-bay roll-out storage tray(s)

- 2 Powered dual-directional, full-bay roll-out storage trays (bay size dependent)

- 2 Ladder with universal assist extension (floorplan dependent)

- 2 Sunscreen package with wiper covers

- 2 Custom bus style paint and design schemes

- 2 Factory delivery

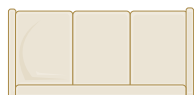
- 2 Ultimate factory delivery

DS = Driver-Side, PS = Passenger-Side



SEATING 2

(DS) Sofabed
(PS) Sofabed
*Cannot choose two
J sofas or two hide-away
sofas*



SEATING 3

(DS) Euro recliner
with ottoman and
occasional table
(PS) Sofabed



SEATING 5

(DS) Office
Suite desk
and Euro
recliner
with ottoman
(PS) Sofabed



Only seating 2, 3 and 5 are available.

SELECT YOUR FAVORITE SLEEPER SOFABED

J Sofabed



Sofabed



For the Affinity 700 Custom, Sofabeds are often available in standard and J configurations.

In each configuration, two styles of sofabed may be available.

STYLES

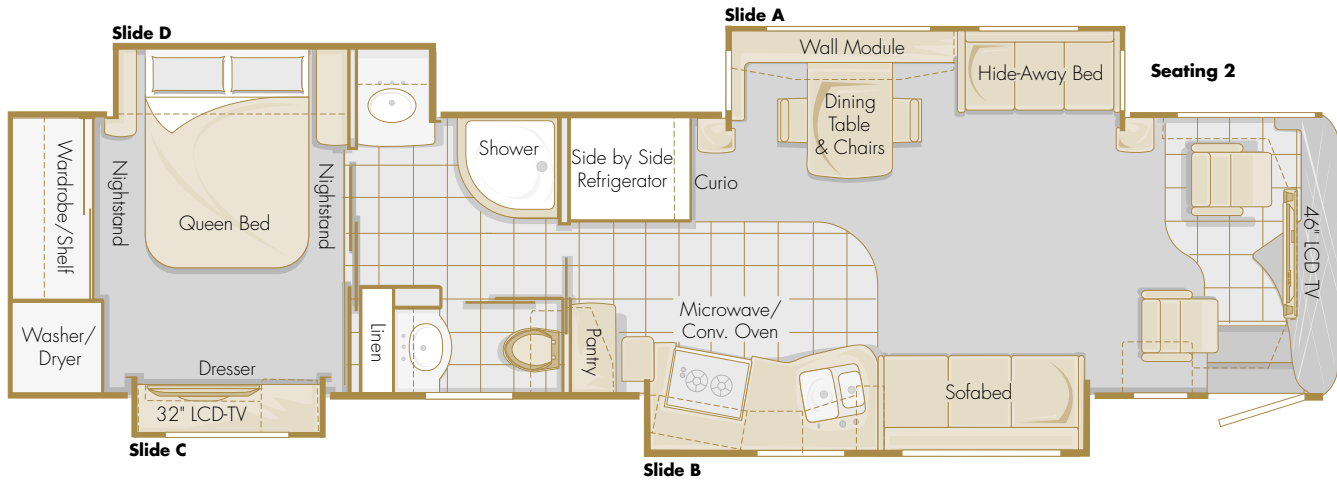
Fold-out Sofabed

Style features a residential sofabed design. For conversion to a bed, lift the sofabed seat up and out to a horizontal position. Provides a sleeping surface faced with sofa fabric. (Standard for all passenger-side sofabed locations)

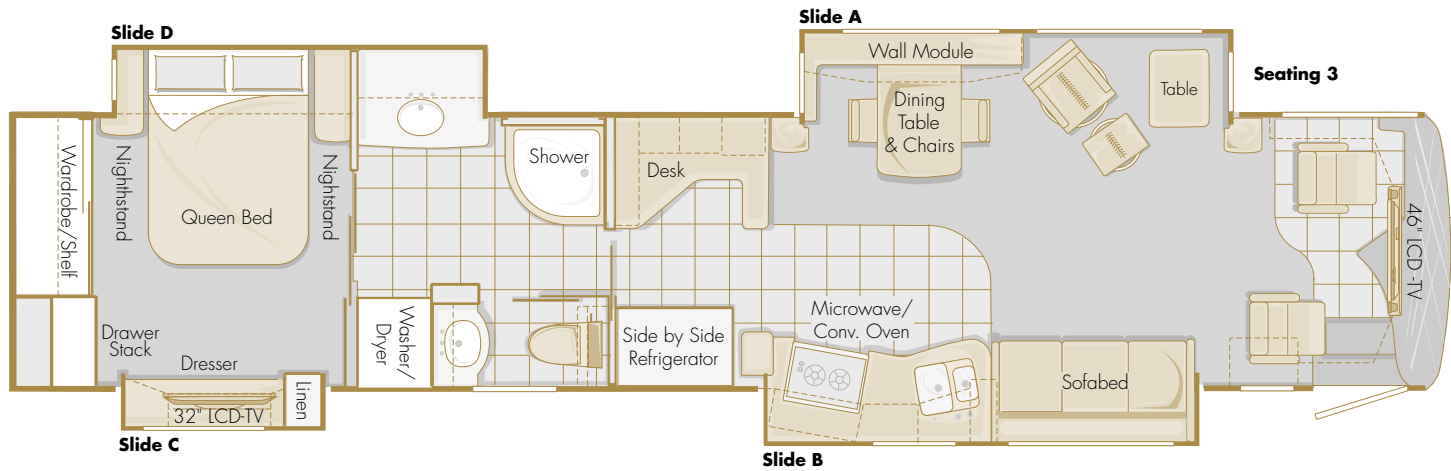
Hide-away Sofabed

Style features a residential sofabed design. For conversion to a bed, remove the seat cushions and pull out the hide-away bed frame to unfold and extend the mattress. Provides a conventional or air mattress sleeping surface. (Standard in the seating 2 driver-side sofabed location)

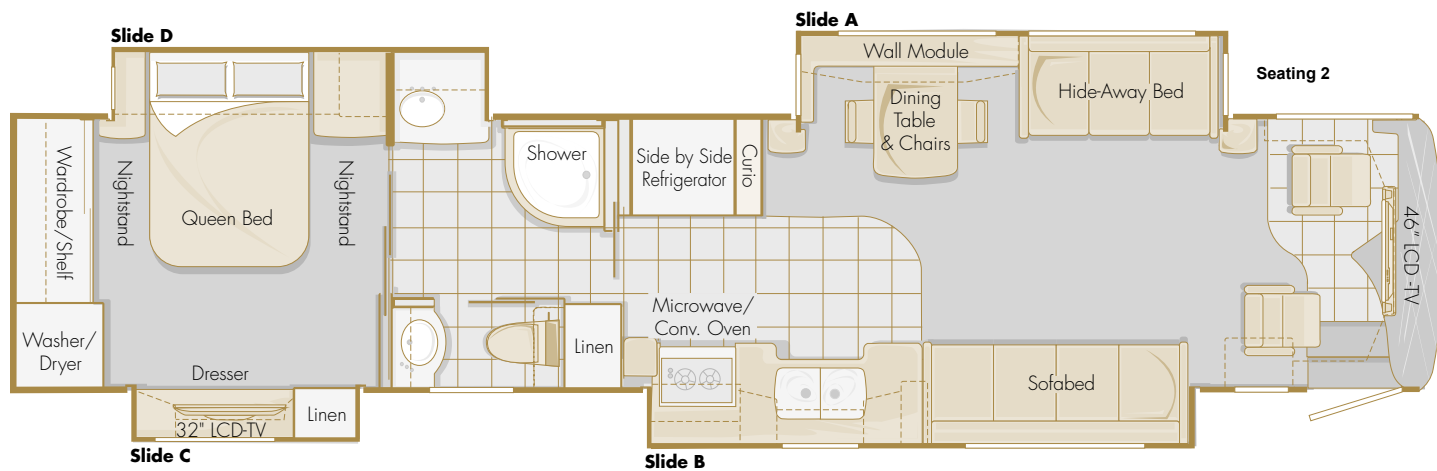
40' Sonoma Coast



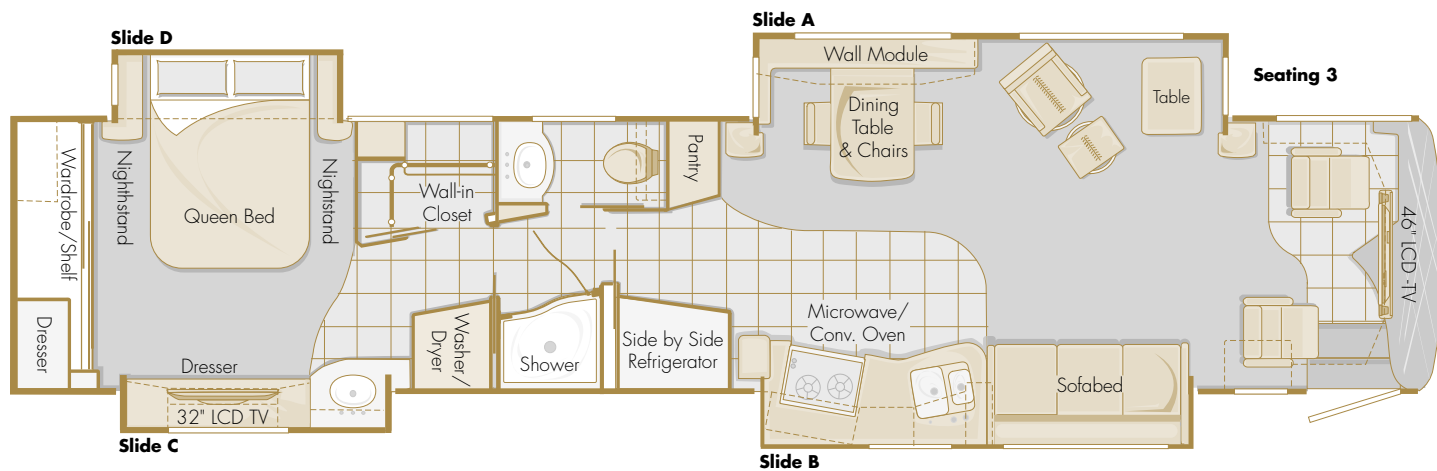
45' Alexander Valley



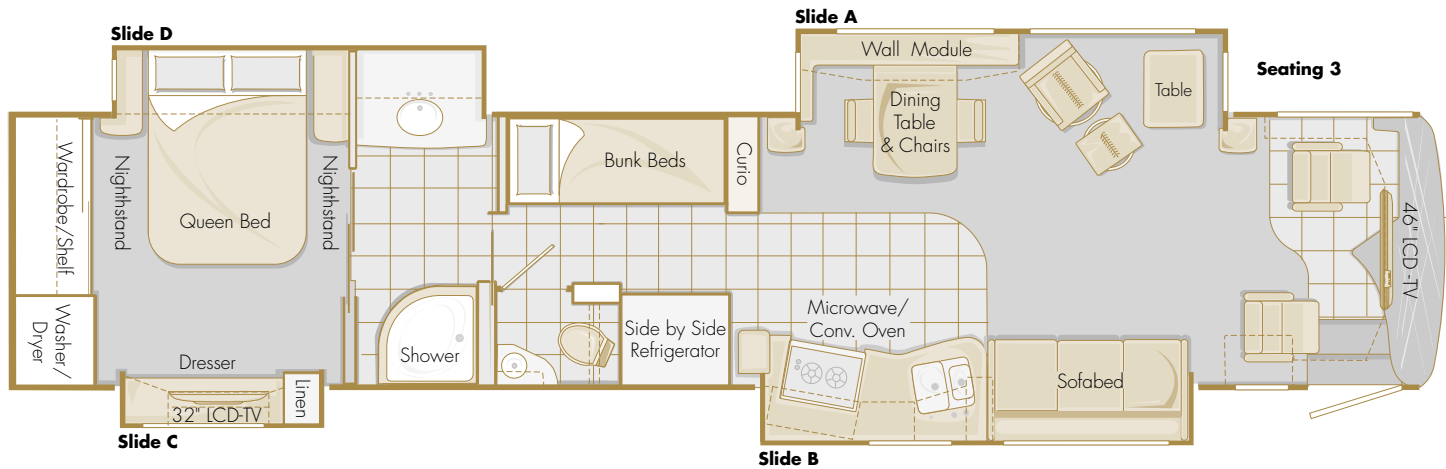
45' Stag's Leap



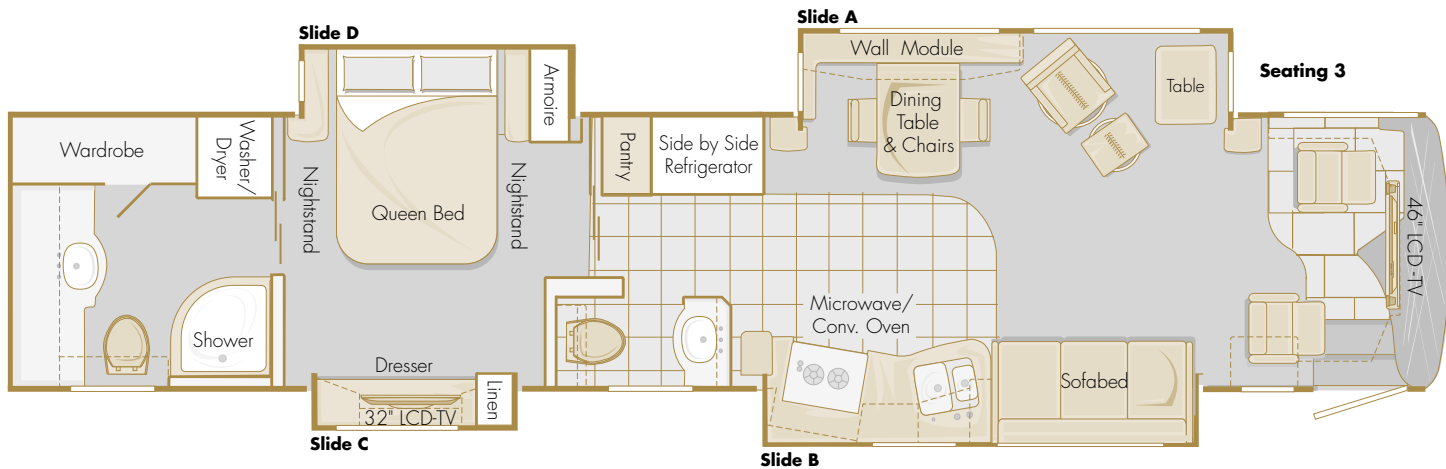
45' Saint Helena



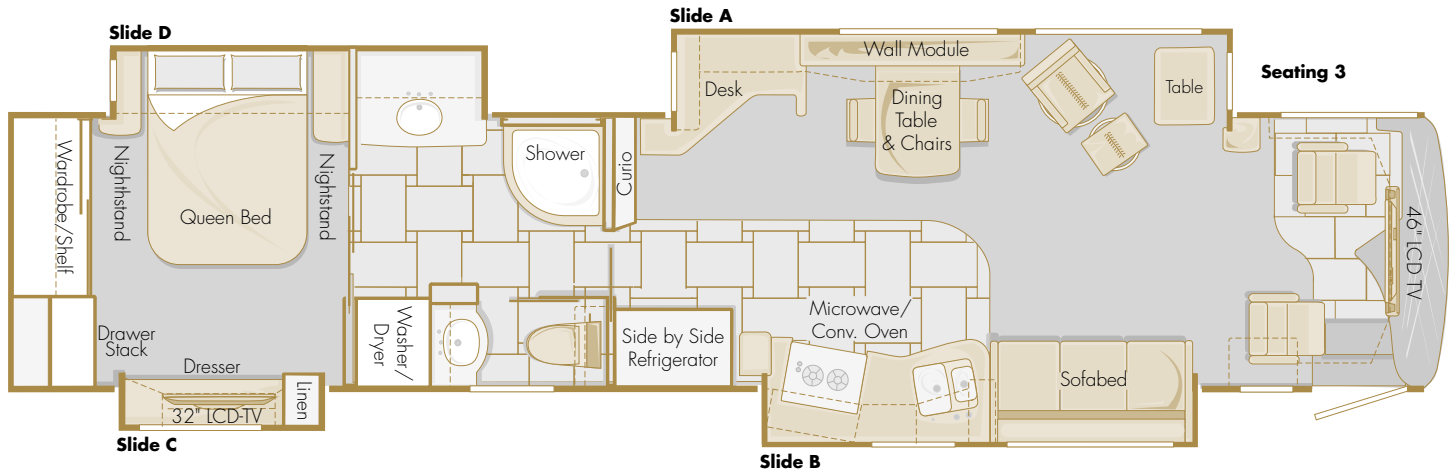
45' Silverado Trail



45' Russian River



45' Diamond Mountain



 **COUNTRY COACH**

THE WORLD'S FINEST MOTORCOACHES

www.countrycoach.com

Customer Care Center 210 East Sixth Avenue, Junction City, Oregon 97448, 800-654-0223, 541-998-3001
Corporate Office 135 East First Avenue, Junction City, Oregon 97448, 800-547-8015, 541-998-3720

IMPORTANT NOTICE: Country Coach does not represent or warrant that its motorcoaches can lawfully be operated on all roads or in all states. Laws restricting the length, width, and/or weight of vehicles vary from state to state. Depending on the model, some Country Coach motorcoaches (as well as similar sized motorcoaches produced by other manufacturers) may not legally be used on certain roads or in certain states, or may only be used on such roads or in such states with special permits or license endorsements. It is the responsibility of each prospective purchaser of a motorcoach to determine any limitations or restrictions on the use of the motorcoach in the states in which the purchaser intends to use it.

Due to constant product improvements, styling, design, equipment and construction are subject to change without notice or obligation. We reserve the right to make changes, but are happy to verify any item on request. **Some items featured may be optional.**