



CONQUEST
MOTORHOMES

Off the map, **on the mark.**

SUPERNOVA

A rare celestial phenomenon; a star that emits a vast amount of energy.



2008 SuperNova

CONQUEST
MOTORHOMES



Off the map, **on the mark.**

LIVING CONVENIENCE...

Our spacious living quarters feature a well equipped galley, space saving entertainment center, stain resistant plush carpet, comfort plus furniture, and H-ducted ventilation system giving you all the comforts you would enjoy at home.



6400 U-Shape Dinette/Booth Bed for easy extra room to dine with the whole family. (shown in Sante Fe decor)



6400 Great Room/Kitchen Room to stretch and relax in the SuperNova 6400. Enjoy the great room with a deluxe kitchen area including a 3 burner top, solid surface countertop and convection microwave.



The All NEW Skyview Cap!

Skyview Cap offers an alternative view. The Skyview Cap is an option on the all SuperNova floorplans and is a SuperNova exclusive.



6400 Bunkhouse for an extra sleeping and play area! Complete with drop down LCD monitors for watching a movie or playing video games. (shown in Sante Fe decor)





“The Grand Hotel”

*Shown in Topaz Decor

Interior Fabrics



Chocolate



Topaz



Sante Fe

Top Checkpoints!



➔ SuperNova offers an optional extra safety feature in the Back up Monitor giving you extra viewing behind the RV.

➔ The SuperNova has nearly 7' interior ceilings for a residential look and feel with 6 foot ceilings in the slideroom.

➔ Unlike traditional plywood and foam seating Comfort Plus Seating features the strength of steel and the comfort of a sprung dinette cushion.

➔ Conquest has eliminated the carpeting on the built in stair well to make the cleaning process easier and to add traction so there is less likely to be slipping when maneuvering in and out of the vehicle. Several models also have the magnetic door stays that are easy to use and dependable.

Added, Value

FLUSH FLOOR
Slide out rooms



➔ Dual metal H-Ducted air conditioning system eliminates mildew causing condensation and is wrapped in foil bubble insulation for improved climate control.

➔ **Excellent Weathering** - Maintaining the vehicle's quality appearance enhances its resale value.



Tear Resistance - Flexroofs hard abuse resistant finish resists tearing, a condition that can cause leaks and lead to expensive repair.

Low Maintenance - Road grime can easily be removed with normal cleaning maintenance. Rubber chalking due to solar breakdown of the roof surface is eliminated, preserving the original appearance and resale value of the vehicle.

Stain Resistance - Fiberglass Flexroof is designed to resist staining and maintain its quality appearance.

Structural Integrity - Unlike conventional EPDM rubber roof membranes, Flexroof is a structural component of the roof system.

Textured Fiberglass - Helps dissipate heat and prevents tree limbs from tearing or scratching your roof.

➔ The SuperNova includes flush floor slides for a clean residential look and feel.

GALVANIZED STEEL STORAGE COMPARTMENTS



➔ Seamless, carpeted, galvanized steel storage compartments safely cradle your valuables. Rust protective paint and foam sealed for extended life and a quiet ride.



➔ Our residential style cabinets are constructed of solid hardwood doors and fronts that are pre-drilled and screwed, then they are stained and top coated with a furniture grade finish that provides long lasting beauty and durability as well as adding strength and quietness to your motorhome.

Other companies use wrapped cabinet fronts prone to peeling, fading, and tearing. The softer composite wood used does not hold screws as well as hardwood resulting in loss of strength and squeaking. Discoloration will degrade the beauty and lower the value of the motorhome.

Three-step prime/base/clear coat process for hood and cab provides outstanding resistance to corrosion and fading, lowers maintenance costs and increases resale value.

- GCWR - 33,000
- GVWR - 25,900

A clean frame rail CA (cab to axle) simplifies body and equipment mounting.

International Diesel Chassis

Two-way breakaway mirror design can withstand an impact up to 9-mph, which eliminates door damage and reduces repair and replacement costs.

- Heavier Duty 2500 Series Allison Transmission!

- 15,000 lb. Hitch Rating*

The front windshield features over 2,000 sq. in (12,903 sq. cm.) of glass for excellent visibility. The one-piece design, thicker outer glass and swept-back angle increases safety and noise control - while helping to deflect road debris.



Standard composite construction headlights with halogen bulbs are longer-lasting and easy to replace for increased uptime.

- VT365 International Diesel; 300 HP

Interior door handles wide door openings, three-point entry system and non-slip treaded steps provide easy entry and egress.

- 140 Gallon Fuel Tank

Powder-coated components resist rust, chips and scratches for added durability and longer-lasting good looks.

A set-back axle provides outstanding maneuverability and a tight turning radius, making it easier to negotiate through cramped spaces, which increases driver efficiency and productivity.

- 266"-278" Wheel Base

***towing based on model and customer load requirements*



A NAVISTAR COMPANY

SUPER STRENGTH TRUSS SYSTEM

CONSTRUCTION...

Quality, Comfort, Strength and Value are four great words to describe our mind set while designing and constructing the conquest lineup of products. You can see and feel the quality and attention to detail we gave every component. From the strength of our foundation, roof, floor and sidewalls, down to the comfort of our seat cushions, nothing was skipped.



10" C CHANNEL

The super strength truss system is unmatched in the class C industry. The structural subfloor foundation begins by welding a network of steel web trusses to the chassis rail. Specifically designed to distribute and transfer the tremendous forces from the coach to the chassis rail these trusses are individually tested to withstand 6,000 pounds each.



Coach-Net®

24 HR. EMERGENCY ROADSIDE ASSISTANCE

- One Year Coach-Net Membership
- Towing and Winching
- Flat Tire Change
- Mobile Mechanic
- Delivery of emergency Fluids
- Jump-Start / Battery Boost
- Lockout

2 YEAR
UNLIMITED MILEAGE
TRANSFERABLE
WARRANTY
ON STRUCTURAL COMPONENTS*

One year unlimited mileage total use warranty under normal use against defects in material and/or workmanship in construction and original components. *For purposes of this warranty, "Structural components" shall be limited to the structure of the side walls, front and back walls, roof and floor. See the official written Gulf Stream Coach, Inc. Limited Warranty for details.

Value, Added

G.O.L.D. Program

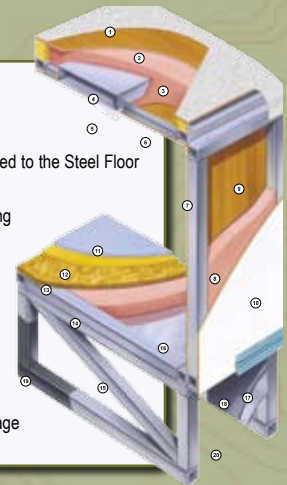
(Gulf Stream Ownership Lifetime of Dedication)



Gulf Stream is dedicated to our customers and their enjoyment of our products. Our golden promise is to call you within four weeks of the new vehicle purchase date welcoming you to the Gulf Stream family. This call, made by your dedicated customer care person, is to let you know that if you ever need assistance with the operation of components, troubleshooting, or if you ever need to locate an authorized service center, you can rest assured that help is but a phone call away. With the G.O.L.D. Program we'll be there for you for the lifetime of your RV.

SuperNova Motorhomes, Dare to Compare

- Seamless Fiberglass Flexroof Designed to Resist Staining and Maintain Quality Appearance; Dissipates Heat and Prevents Tree Limbs from Tearing or Scratching Roof.
- Luan Decking for Additional Strength.
- Molded, High Density EPS (Expanded Polystyrene) Roof Brick Insulation - Provided Consistent Insulation Value as well as Superior Dimensional Rigidity.
- One-Piece Formed Aluminum Air Conditioning Duct, Completely Surrounded By EPS Insulation.
- Bubble-Wrapped Foil Insulation Provides Superior Insulation and Helps Prevent Condensation.
- Rugged Welded Tubular Aluminum Roof Framing.
- Rugged Heavy-Gauge Tubular Aluminum, Fixture Welded to Form the Sidewall Framing.
- High-Density EPS Insulation Provides Superior Lamination and Bonding Characteristics and Insures Greater Energy Efficiency.
- Interior Wall Panels Securely Laminated to Sidewall Framing.
- "Super Slick" Fiberglass Exterior Vacuum-bond Laminated to Sidewall Framing for Lasting Beauty and Durability. (Option)
- High-Quality Stain-Resistant Carpeting Available in Designer Coordinated Colors.
- Extra-Thick Padding Under Carpet Provides Extra Comfort and Increases Carpet Durability.
- Floor Decking Laminated to Steel Floor Structure Assures a Quiet, Long-Lasting Rigid Floor and comes with a 10-Year Warranty.
- Heavy-Gauge Tubular Steel Floor Framing, Fixture Welded for Extra Strength and Stability.
- Heavy-gauge Tubular Steel Framed, Fixture Webbed Floor Truss System Provides the Strongest Class C Foundation in the Industry.
- Seamless Layer of Galvanized Steel Securely Laminated to the Steel Floor Framing.
- Galvanized Steel Used to Form Each Storage & Holding Compartment.
- Durable All-Weather Carpeting Completes Each Accessible Storage Compartment, Providing Extra Protection for Luggage and Valuables.
- Rust-Prohibitive Paint Coating Applied to All Steel Framing Assures Corrosion and Rust Protection.
- The Industry's Strongest, Most Spacious Exterior Storage Compartments.



Chassis

- 25,900 GVWR, 300 HP VT365 INTERNATIONAL DIESEL
- 530 FT/LBS TORQUE
- 140 GALLON FUEL TANK

Decor

- HARD ROCK MAPLE INTERIOR
- HARD STILE CABINET FRONTS
- ROLL GOODS IN KITCHEN, BATH, & HALL; CARPET OTHER AREAS
- SHADES THROUGHOUT
- DECORATOR MIRROR (NA 6372)
- SOLID SURFACE KITCHEN COUNTERTOP W/SINK & STOVE COVERS
- SOFT TOUCH VINYL CEILING LINER

Exterior

- 7" INTERIOR HEIGHT
- ONE PIECE FIBERGLASS ROOF
- SUPER SLICK FIBERGLASS SIDEWALLS
- BUS STYLE SLAM LATCH BAGGAGE DOORS
- FLUSH FLOOR SLIDE
- WELDED ALUMINUM PERIMETER FRAME
- LAMINATED 3/8" STRUCTURE BOARD STEEL FLOOR FRAME
- FIBERGLASS FRONT & REAR CAPS
- ELECTRIC AWNING
- FULL WALL SLIDE (6372, 6400)
- SLIDE OUT ROOM (DIN/SOFA) (6331)
- SLIDE OUT ROOM (BED)
- RADIUS TINTED WINDOWS
- LIGHTED TRUNK BOXES
- REAR MUD FLAPS
- ELECTRIC MAIN AWNING
- (2) SLIDE OUT TOPPERS
- STAINLESS STEEL WHEEL INSERTS
- HEATED & REMOTE EXTERIOR SIDEVIEW MIRRORS

- FOAM SEAL & UNDERCOATING
- DEAD BOLT LOCK ENTRY DOOR
- ENTRY DOOR ASSIST BAR
- LEVELING JACKS
- HITCH W/PLUG
- AUTO ELECTRIC STEP
- OUTSIDE RINSE & WASH (NA 6372)

Power

- (2) AUXILIARY BATTERY
- 50 AMP SERVICE W/AUTO CHANGEOVER & CONVERTER
- 6.0 ONAN DIESEL GENERATOR
- BATTERY DISCONNECT

Heating & Cooling

- DASH A/C
- 11,000 BTU LOW PROFILE DUCTED AC (BEDROOM)
- 13,500 BTU LOW PROFILE DUCTED AC (FRONT)
- 35,000 BTU FURNACE
- 25,000 BTU FURNACE IN REAR (6400)
- ARCTIC PACKAGE

Bath

- PORCELAIN STOOL
- SKYDOME
- POWER BATH VENT
- CORNER SHOWER W/SURROUND (NA 6400)
- GLASS SHOWER DOOR

Electrical

- EMERGENCY START SWITCH
- TV ANTENNA WITH AMP & BOOST
- MONITOR PANEL
- GENERATOR SWITCH & HOUR METER
- TV JACK IN BEDROOM
- CABLE TV READY
- CEILING LIGHT WALL SWITCH

CD PLAYER

- G-SOUND
- FLORESCENT LIGHTS THROUGHOUT
- LCD TV IN FRONT CABOVER
- 32" LCD TV (6400)
- CD/DVD PLAYER W/5.1 DOLBY DIGITAL SURROUND SOUND, AM/FM RADIO AND MP3 CAPACITY

Furnishings

- ADJUSTABLE KING BED W/LIFTS, INNERSPRING MATTRESS, BEDSPREAD & PILLOWS
- DINETTE BOOTH BED (NA 6400)
- U-SHAPED DINETTE (6400)
- FRONT CABOVER BED
- 6-WAY OPTIMA DRIVER/PASSENGER SEATS
- OPTIMA H.A.B.
- JACK KNIFE SOFA (PS) (6372)
- HIDE-A-BED (DS) (6372)
- INSIDE HANDRAIL (NA 6400)

Appliances

- CONVECTION MICROWAVE W/3-BURNER TOP
- 12 GAL ELECTRONIC IGNITION WATER HEATER W/BY-PASS VALVE
- SM. 2-WAY DBL DOOR REFER
- LP GAS TANK
- CARBON MONOXIDE DETECTOR
- LP LEAK DETECTOR
- CENTRAL VAC SYSTEM

Popular Options

- 15,000 BTU LOW PROFILE DUCTED ROOF AC IPO 13,500
- 140 GALLON FUEL TANK (REQUIRED)
- 3-SPEED FANTASTIC ATTIC FAN
- BLACK FLUSH TANK
- UPGRADED DASH
- FIREPLACE (6400)

- FULL CABOVER ENTERTAINMENT CENTER
- THERMOPANE WINDOWS
- FULL BODY PAINT W/DOUBLE CLEAR COAT
- SKY VIEW CAP W/SHADE
- LCD FLAT SCREEN TV W/REMOTE IN REAR BEDROOM
- OUTSIDE ENTERTAINMENT CENTER
- DUAL FLIP DOWN TV'S IN BUNK AREA (6400)
- DSS PRE-WIRE
- BACK UP MONITOR
- AVS 100 VIDEO BOX
- 450W INVERTER
- LRG 2-WAY DOUBLE DOOR REFER (#2862)
- SIDE-BY-SIDE REFER W/ICE MAKER (NA 6372)
- SIDE-BY-SIDE REFER (6372)
- COMBO WASHER/DRYER (6372, 6400)
- WASHER/DRYER PREP (6372, 6400)
- 8.0 GENERATOR IPO 6.0 DIESEL
- EURO CHAIRS IPO SOFA (6400)
- WARDROBE IPO BUNKS (6400)
- OFFICE SPACE IPO BUNKS (6400)



Luxury Red



Luxury Blue

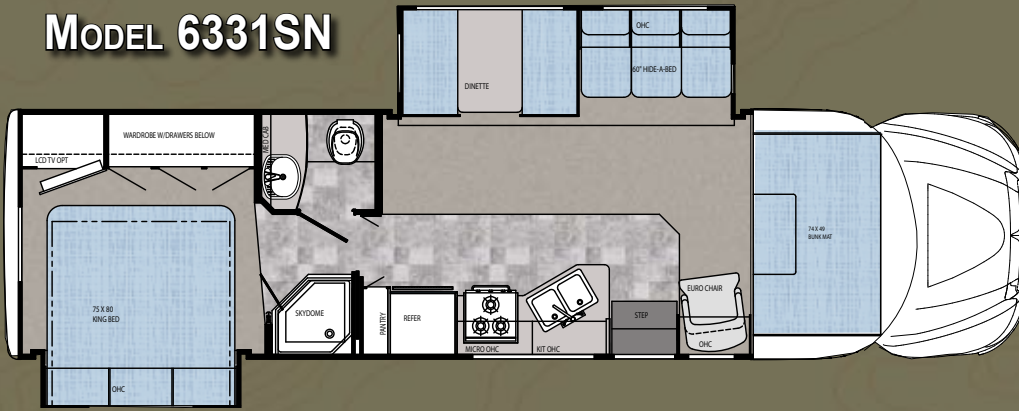


Adrenaline Red



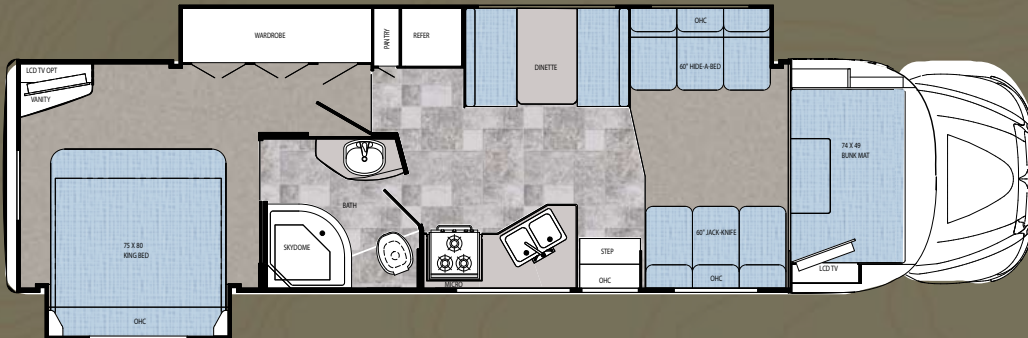
Adrenaline Blue

MODEL 6331SN



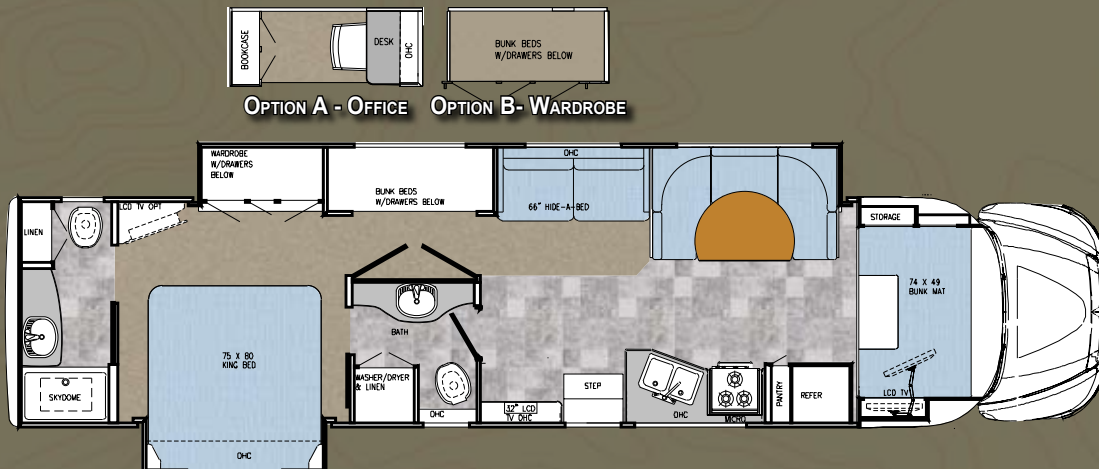
Chassis	International 4200	Fuel	140 Gal.
Engine	300 Hp. V-8	Black	52 Gal.
GVWR	25,900	Grey	52 Gal.
Wheelbase	266"	Fresh	150 Gal.
Length	34' 1"	LP Gas Tank	64 lbs.
Exterior Height	12' 7"	Furnace	35,000 BTU
Exterior Width	101"	Water Heater	12 Gal. Electric/Gas
Interior Height	84"	Basement Storage	92.08 cu. ft.

MODEL 6372SN



Chassis	International 4200	Fuel	140 Gal.
Engine	300 Hp. V-8	Black	52 Gal.
GVWR	25,900	Grey	52 Gal.
Wheelbase	266"	Fresh	150 Gal.
Length	37' 2"	LP Gas Tank	68 lbs.
Exterior Height	12' 7"	Furnace	35,000 BTU
Exterior Width	101"	Water Heater	12 Gal. Electric/Gas
Interior Height	84"	Basement Storage	106.36 cu. ft.

MODEL 6400 SN- GRAND HOTEL



Chassis	International 4200	Fuel	140 Gal.
Engine	300 Hp. V-8	Black	52 Gal.
GVWR	25,900	Grey	52 Gal.
Wheelbase	278"	Fresh	150 Gal.
Length	40'	LP Gas Tank	68 lbs.
Exterior Height	12' 7"	Furnace	35,000/25,000 BTU
Exterior Width	101"	Water Heater	12 Gal. Electric/Gas
Interior Height	84"	Basement Storage	95.06 cu. ft.



CONQUEST
MOTORHOMES



The Conquest Checkpoint is the outward physical symbol of our role as industry leaders. Our exacting standards for creating the best possible RV Customer experience are the direction the rest of the industry seeks.

Beyond the beaten path, to a new destination.

Conquest constantly looks to the future, casting a clear vision of "the next big thing" and making it happen. We don't follow trends; we set them. Beyond imagination, to reality.

GULF STREAM



COACH, INCORPORATED



Conquest Motorhome Division is a member of the Gulf Stream Coach family of products. As a privately owned company with nearly 25 years of RV manufacturing experience, Gulf Stream has set itself apart from the rest of the RV industry by giving the market exactly what it's looking for. We are constantly talking to our customers and dealers, taking their suggestions, and implementing them in our products. We also use Lean Manufacturing Techniques, Six-Sigma Quality Control, Creative Standardization and 5 S practices to maximize our production efficiency and eliminate waste. Our efficiency has received accolades from Vincennes University for Total Quality Management. These practices have also gained recognition from the state of Indiana, as we have received the Indiana Governor's Award for Recycling, making us one of the few eco-friendly manufacturing companies in the industry. All these initiatives go back to one goal... To give you the highest value product offerings, quality construction, innovative features, contemporary designs, and unmatched service and on-going support.



The Gulf Streamers RV Club is a valuable benefit to all Gulf Stream owners. Members enjoy staying active and participating in the various rallies and caravans offered throughout the United States and Canada. Go to www.gulfstreamrv.com for more information.



LEARN MORE ABOUT OUR WIDE RANGE OF PRODUCTS AT
WWW.CONQUESTMOTORHOMES.COM

POST OFFICE BOX 1005 • NAPPANEE, IN 46550 • 1-800-289-8787

For more information and available options, contact your local Conquest dealer, www.conquestmotorhomes.com or Gulf Stream Coach, Inc. Gulf Stream Coach, Inc., reserves the right to make changes in prices, colors, materials, components and specifications and to discontinue models at any time without notice or obligation. Gulf Stream Coach, Inc., assumes no responsibility for any error in type or print reproduction of specifications or floorplans in this brochure. Photographs may show equipment or items that are optional and are not included in the purchase price of the coach. Test drive and review a current model at your nearest Conquest dealer. © 2008 Gulf Stream Coach, Inc., Nappanee, Indiana U.S.A.