

WYOMING SUMMIT FIFTH WHEELS



## WYOMING SUMMIT

### EASY TO USE. REALLY.

Pete symbolizes our commitment to being your best friend on the road. Like Pete, we're always there to make sure your Coachmen RV is as easy and uncomplicated as possible, so you can escape life's hassles and enjoy RVing more.

Your Coachmen RV will be easy to buy, easy to use and easy to own. That's our promise to you. We accomplish this through clever designs and superior support after the sale. But the real measure of "easy" is in the countless thoughtful touches we include throughout your new Coachmen RV.

### EASY TO OWN. HONEST.

Our commitment to you is your ongoing satisfaction. Dealers are authorized to solve your problems on the spot and get you on your way without fuss or hassle. Should you ever need service or repair, it is easy to find one of the hundreds of Coachmen dealers or authorized repair centers nationwide.

Our toll-free service hotline (800-453-6064) and online service support center put you in touch with a Coachmen service representative, warranty information, maintenance information, troubleshooting tips, dealer locations and other helpful information.

Coachmen. You couldn't ask for an easier traveling companion.

### TRAVEL EASY™. ALWAYS.

RVing is easier with Coachmen's Travel Easy™ Roadside Assistance included for the first year on most new motorized and towable Coachmen RVs\*. Administered by Coach-Net®, this service provides you with 24/7 operational, technical and emergency road service coverage. Anywhere. Anytime. Travel Easy™ is the security of knowing that help is an easy phone call away. \*See your dealer for details.



**Coachmen** Coachmen Recreational Vehicle Company, LLC  
Life should be so easy. P.O. Box 30, Middlebury, IN 46540

All information contained in this brochure is believed to be accurate at the time of publication. However, during the model year, it may be necessary to make revisions and Coachmen reserves the right to make all such changes without notice, including changes in prices, colors, materials, equipment and specifications, as well as the addition of new models and the discontinuance of models shown in this brochure. Therefore, please consult with your Coachmen dealer and confirm the existence of any materials, design or specifications that are material to your purchase decision.  
©2008 Coachmen Recreational Vehicle Company, LLC. All rights reserved. Printed in USA 11/08



**EASY TO ENJOY. SERIOUSLY.**  
Purchase a new Coachmen RV and receive a free one-year membership in the Coachmen Owner's Association (C.O.A.).

You'll enjoy exclusive discounts at campgrounds, theme parks and fuel stations. You'll also receive concierge service 24/7 so you can find and buy what you need, often at big discounts!

Other benefits include trip routing, vacation packages, event reservations, mail forwarding and our helpful owners magazine — Easy RVing. Plus annual camping events, a support network and services for first-time buyers.

Take advantage of your C.O.A. membership today by calling 888-422-2582.



To see how Coachmen is making the easy life even easier, visit [www.easyRVing.com](http://www.easyRVing.com) or call 1.800.353.7383.

## WYOMING SUMMIT

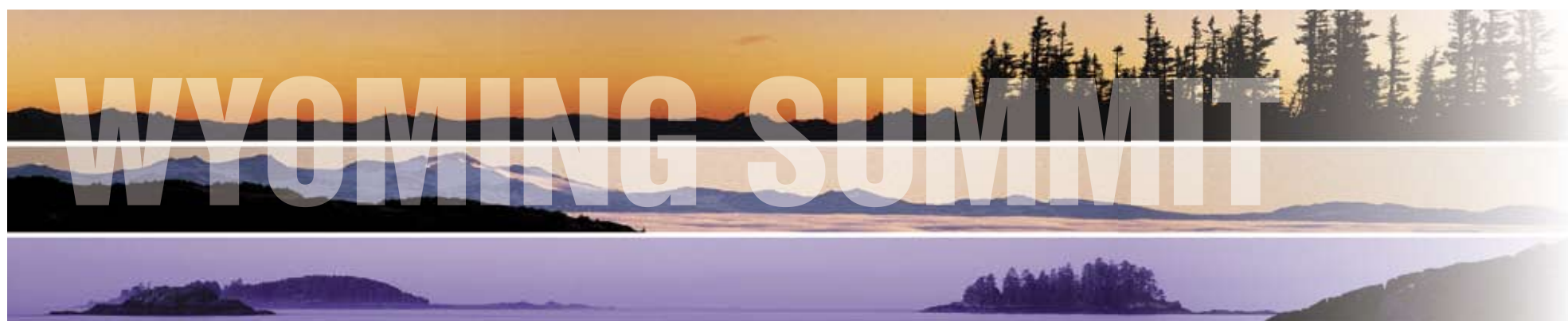


WYOMING SUMMIT™ FIFTH WHEELS

COACHMEN®



WYOMING SUMMIT FIFTH WHEELS



## LIFE'S AN ADVENTURE

Designer touches like fluted wood accents, crown molding, oil rubbed bronze hardware and designer furnishings create a warm, inviting atmosphere that sets the tone for elegant living.

Live large. Entertain family and friends. The 80" wide hide-a-bed sofa comfortably seats three adults and converts to a queen size bed for additional sleeping space. Enjoy a residential style dinette with a view through large windows. (335 RETS shown with Cobblestone Suede decor and optional Soft Touch Elantra Leather)

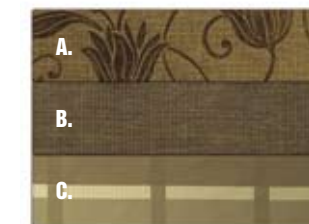
### DECOR SELECTIONS FABRIC KEY:

A. Main B. Accent C. Bedspread

Decor selections are subject to change throughout the model year. Please visit your Coachmen dealer or [www.easyRVing.com](http://www.easyRVing.com) for current decor availability.



Baroque Beige



Century Moss



Cobblestone Suede



Optional Soft Touch Elantra Leather (includes sofa and dinette chairs)



The modern kitchen with warm inviting residential style cabinetry is the centerpiece for great times together. Enjoy luxury amenities including a designer pull-out faucet, polished solid surface countertops and sink covers, crown moldings, spacious storage, and toe kicks in the cabinet base.

COACHMEN®

# WELCOME TO THE GOOD LIFE

## WYOMING SUMMIT

Expand your horizons. Why not visit the places you've always wanted to see in comfort and style? Wyoming Summit lets you explore your world in a big way. With so much luxury and living space, you'll want to go as far as your dreams take you. And when you return home, you'll be planning the next grand adventure.



Wyoming Summit's notched front cap design allows up to a 90° turning radius on most shorter bed pickup trucks, for added maneuverability.

### EASY TO MANEUVER TURN RITE FRONT CAP



Everyone can spread out and relax in Wyoming Summit's ample living room featuring soft touch recliners, an optional fireplace, a convenient desk, and a huge 32" LCD TV!



The built-in central vacuum system makes clean up a breeze.



Wyoming Summit's spacious bathroom includes a large radius shower with a residential vanity area.



Relax and refresh in Wyoming Summit's lavishly styled bedroom complete with directional lighting, large mirrored closets and plenty of wardrobe storage. King bed with pillow top mattress is standard.

| WYOMING SUMMIT FIFTH WHEELS         | 332 RLTS | 335 RETS | 338 RLQS | 364 SIQS |
|-------------------------------------|----------|----------|----------|----------|
| Base Weight                         | 10,158†  | 9,970†   | 11,494†  | 11,349†  |
| Carrying Capacity                   | 3,899†   | 3,985†   | 2,620†   | 3,052†   |
| Hitch Weight                        | 2,057†   | 1,955†   | 2,114†   | 2,401†   |
| Interior Height (upper deck)        | 6'6"     | 6'6"     | 6'6"     | 6'6"     |
| Exterior Height*                    | 13'      | 13'      | 13'      | 13'      |
| Exterior Length                     | 37'6"    | 37'6"    | 38'11"   | 38'      |
| Exterior Width                      | 8'       | 8'       | 8'       | 8'       |
| Awning Length                       | 14'      | 14'      | 14'      | 16'      |
| Sleeping Capacity                   | 6        | 6        | 6        | 6        |
| Exterior Storage Capacity (cu. ft.) | 135      | 135      | 140      | 140      |
| Fresh Water Capacity (gal.)         | 60       | 60       | 60       | 60       |
| Waste Water Capacity (gal.)         | 45       | 45       | 45       | 45       |
| Grey Water Capacity (gal.)          | 90       | 90       | 90       | 90       |
| Water Heater Capacity (gal.)        | 16**     | 16**     | 16**     | 16**     |
| Tire Size                           | 16"      | 16"      | 16"      | 16"      |
| LP Gas Capacity (lbs.)              | 60       | 60       | 60       | 60       |
| Furnace Rating (x 1,000) BTU        | 40       | 40       | 40       | 40       |

†Estimated

\*Includes Roof A/C

\*\*16-Gallon Effective

**Base Weight:**  
The weight of the unit with no fluids, cargo, optional equipment or accessories.

**Carrying Capacity:**  
This is the amount of weight available for all fluids, cargo, optional equipment and accessories. The actual "loaded" weight will depend on the equipped unit and the owner's individual choice of cargo, etc.

### FIRST CLASS FEATURES

KEY: S = Standard ■ O = Optional ■ P = Essential Packages\*  
\*Essential package items are required options.

| ELECTRICAL AND LIGHTING   | HEATING AND AIR CONDITIONING                       | EXTERIOR AND CONSTRUCTION                        |
|---|--|--|
| Brazilian Cherry cabinetry  | Double bowl kitchen sink                           | Flush floor main slideout rooms                  |
| Base cabinets with toe kicks                                      | Kitchen sink covers                                | Rack and pinion slide system                     |
| Hardwood cabinet doors  | Wireless rear back-up camera                       | Alumicage™ sidewalls and floor                   |
| Techwood drawer sides   | 40,000 BTU E.I. furnace                            | High gloss exterior sidewall                     |
| Oil rubbed bronze hardware  | 15,000 BTU ducted roof air conditioner             | Turn-Rite™ front cap with hitch mirror           |
| Linoleum flooring   | Wire and framing for 2nd air conditioner           | Triple entry step                                |
| Carpet (living and bedroom)                                       | 11,000 BTU bedroom air conditioner                 | Folding assist entry door handle                 |
| Pleated window shades   | Ceiling fan with light kit                         | Aluminum wheels                                  |
| Designer window treatments  | Comfort air ventilator fan                         | Spare tire kit                                   |
| 80" wide hide-a-bed sofa  | Solar powered fresh air vent fan                   | Lighted pass-through storage                     |
| Ultraleather recliner lounge chairs                               | Attic vents  | Extended hitch pin                               |
| Ultraleather furniture upgrade (includes sofa and dinette chairs) | Power bath vent                                    | Roof ladder                                      |
| Desk chair (n/a 335 RETS)   | <b>ELECTRICAL AND LIGHTING</b>                     | One-piece rubber roof                            |
| Residential dinette with four chairs                              | Halogen interior lighting package                  | Power awning                                     |
| Skylight in living area   | Patio light  | Quick connect LP fitting                         |
| Fireplace   | Hitch light  | Stainless steel portable gas grill               |
| Polished solid surface countertops                                | Entry step light                                   | Exterior speakers                                |
| Waste basket  | SureLine™ electrical harness                       | 30" wide entrance door                           |
| Central vacuum system   | 50 amp service                                     | Radius entrance and baggage doors                |
| <b>SLEEPING APPOINTMENTS</b>                                      | 55 amp electronic converter                        | Powder coated I-beam frame                       |
| King bed with pillow top mattress                                 | 12 volt main battery disconnect                    | Power rear stabilizer jacks                      |
| Decorative headboard  | GFI circuits                                       | JT Strong-arm Jack Stabilizer™                   |
| Designer bedspread  | 5.5K gas generator with built-in fuel tank         | Power front hitch jack                           |
| Bedlift storage system (master bed)                               | <b>PLUMBING AND LP SYSTEM</b>                      | Rear fiberglass cap                              |
| Residential styled dresser  | Double 30 lb. LP bottles with auto change-over     | E-Z lube axles                                   |
| <b>APPLIANCES AND ACCESSORIES</b>                                 | Designer kitchen faucet with pull-out sprayer      | Fully enclosed and heated tanks and valves       |
| 5.1 surround sound system with DVD/CD player                      | 16-gallon efficient gas/electric E.I. water heater | Quick release landing gear pins                  |
| 32" LCD television (coach)  | Water heater by-pass valve                         | Equa-Flex™ suspension                            |
| 19" LCD television (bedroom)                                      | Porcelain toilet with foot pedal flush             | CSA Upfit (mandatory for all Canadian provinces) |
| Cable TV jacks  | His and hers dual bath lavs (select models)        | <b>SAFETY AND SECURITY</b>                       |
| Pre-wired for satellite dish                                      | Black tank flush                                   | LP leak alarm                                    |
| Phone jack  | Monitor panel                                      | Fire extinguisher                                |
| TV antenna  | Washer and dryer ready                             | Smoke detector                                   |
| 3-burner range with oven  | Demand water pump                                  | Carbon monoxide detector                         |
| Range cover   | Skylight over shower                               | Entrance door dead bolt lock                     |
| Lighted power range hood  | Glass shower enclosure                             | Break away switch                                |
| Large double door refrigerator                                    | Marbled shower surround                            | Tinted safety glass windows                      |
| Designer refrigerator door inserts                                | Outside spray station & utility bay                | Tinted thermopane safety glass windows           |
| Microwave oven  |  | Exterior security lights                         |
|   |  | Owner's information package                      |

### CONSTRUCTION FEATURES



A cap mounted pin seeker mirror gives you a solid view of the hitch from inside your truck for a confident hookup.

The large fold out grab handle provides a sturdy handhold when entering and exiting the unit.

Equa-Flex™ rubber cushion suspension absorbs shock and vibration.

Drop frame construction on the Wyoming Summit allows a huge 140 cubic feet of pass through exterior storage.

Extend the camping season with heated tanks, and a fully enclosed underbelly with Astro-Foil® insulation.

The Wyoming Summit is big on the important details, like a residential style dresser, plenty of closet space, and room for a 19" LCD TV.



KEY:  
■ Carpet  
□ Linoleum

