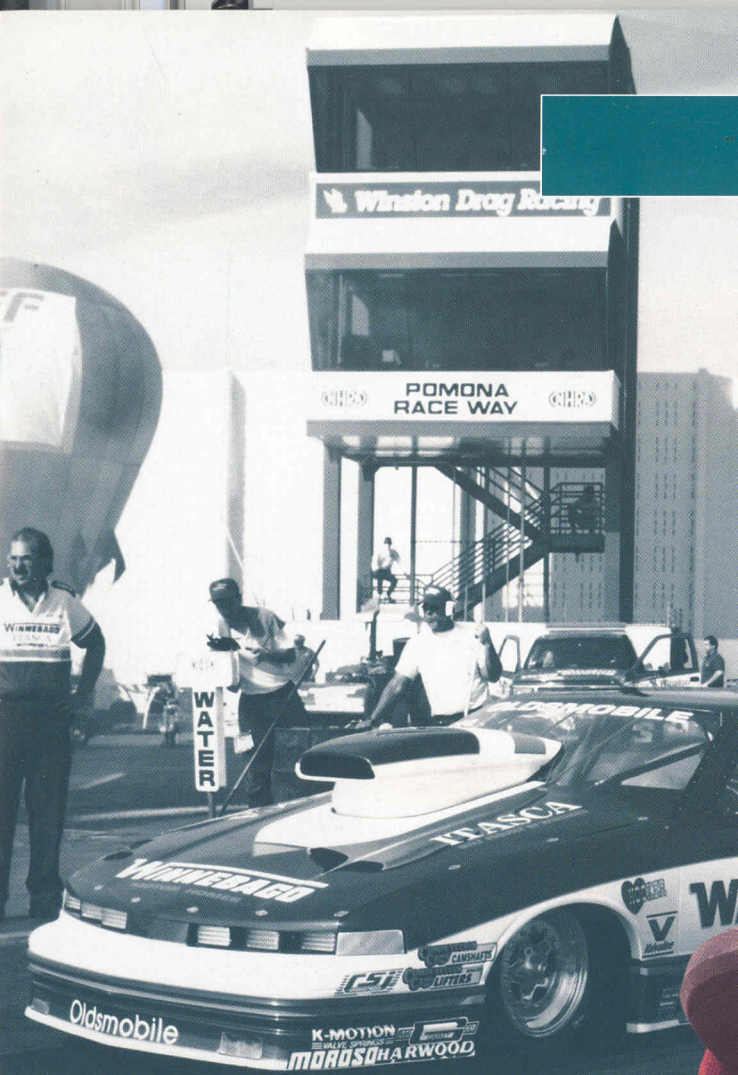


**Brave®**

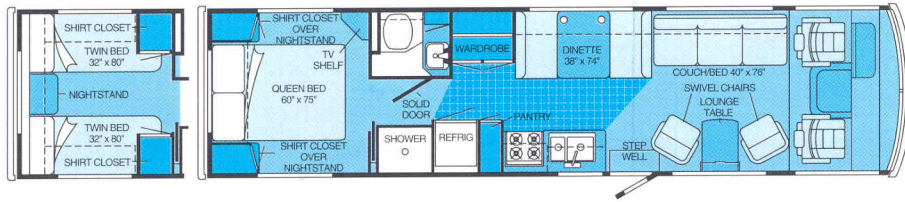


*It's all in our name.*

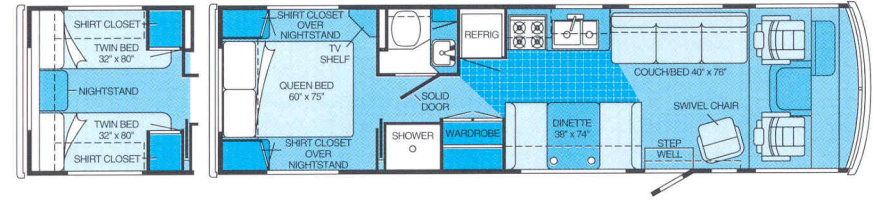
**WINNEBAGO**

# 1994 Brave Floorplans

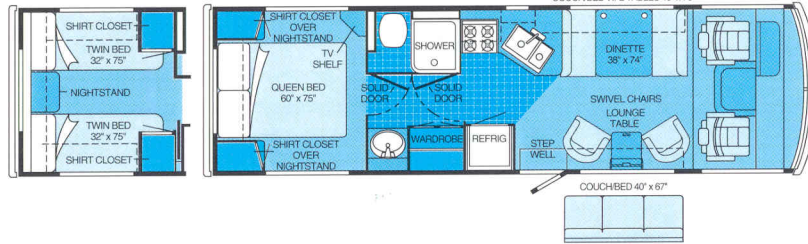
**33RQ** The 33RQ has extra space for entertaining and a thoughtful design throughout. The kitchen comes with its own pantry and is convenient for cooking and serving.



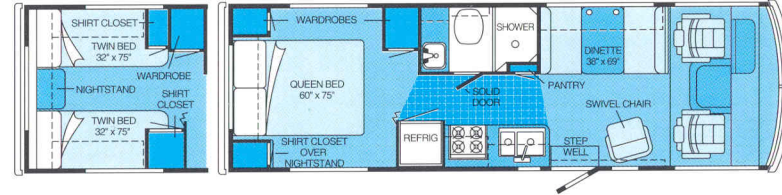
**31RQ** Like the 33RQ, the 31RQ is designed with such features as sliding doors and double-purpose bathroom doors for an additional dimension of privacy. It's also designed for those who appreciate a large living area.



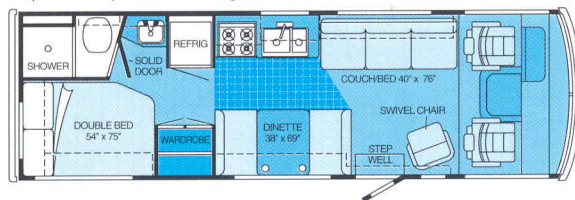
**29RQ** Design the new 29RQ to suit your living needs with the many available options. Both the dinette and couch options convert to beds so there's plenty of sleeping room. The angled kitchen design is as functional as it is attractive.



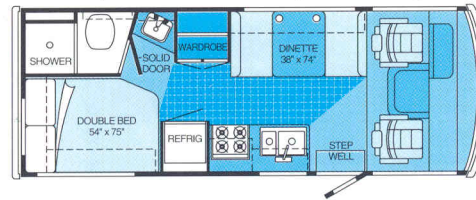
**27RQ** The spacious bedroom incorporates a queen bed (or twin bed option) with lots of room for storage. You also have a choice of living room arrangements and a private bathroom.



**27RC** With the corner bed, this floorplan maximizes the amount of interior space for living and dining. The kitchen has ample work space and storage.



**23RC** The 23RC is ingeniously designed with the convenient bathroom/bedroom combination. Since the cab seats swivel back, there's room in the lounge for stretching out.



For Winnebago sales and service, contact:

**WINNEBAGO**  
*It's all in our name.*

Dimensions shown are for sleeping space only and dashed lines denote overhead storage area. Patterned area indicates optional vinyl floor covering.

©1993 Winnebago Industries, Inc. Forest City, IA 50436. Printed in U.S.A.

23RC	27RC	27RQ	29RQ	31RQ	33RQ	
■	■	■		■	■	Mirror Wall-Mounted in Dining Area
		■			■	Pantry
■	■	■	■	■	■	Range Hood w/Light, Powered Vent
■	■	■	■	■	■	Range w/Large Glass-Doored Oven 3 Burners, 1 High Output (Effective Fall 1993)
■	■	■	■	■	■	Refrigerator/Freezer Large Double-Door
■	■	■	■	■	■	Sink (Double) Stainless Steel, Recessed w/Countertop Cover
■	■	■	■	■	■	Storage Below Dinette Seat

## BEDROOM

23RC	27RC	27RQ	29RQ	31RQ	33RQ	
■	■	■	■	■	■	Bedsprad(s), Pillows, Pillow Shams, Throw Pillow
■	■	■	■	■	■	Lamp(s) Decorator Style, Wall-Mounted
■	■	■	■	■	■	Wardrobe Mirrored Doors, Carpeted Floor, Drawers NA on 27RQ & 33RQ, Upper Shelf NA On 23RC & 27RQ

## BATHROOM

23RC	27RC	27RQ	29RQ	31RQ	33RQ	
			□			Flooring (Vinyl) Only Available in Combination w/Galley Vinyl Flooring
		■	■	■	■	Linen Cabinet
■	■	■	■	■	■	Makeup Lights (3)
■	■	■	■	■	■	Medicine Cabinet Mirrored Doors
		■	■	■	■	Mirrors (2) Wall-Mounted, Single Mirror on 27RQ
■	■	■	■	■	■	Shower Flexible Shower Head, Molded Single-Piece Walls
■	■	■	■			Shower Curtain
				■	■	Shower Door (Solid Glass)
■	■	■		■	■	Sink Rectangular, Molded Soap Dishes
			■			Sink Large Oval, Ledge Back
			■			Skylight
■	■	■	■	■	■	Tissue Holder Surface Mount
■	■	■	■	■	■	Toilet Marine Style
■	■	■	■	■	■	Towel Bar
■	■	■	■	■	■	Towel Rack (3) Built into Door
■	■	■	■			Towel Ring

## EXTERIOR

23RC	27RC	27RQ	29RQ	31RQ	33RQ	
■	■	■	■	■	■	Awning Rail
	□	□	□	□	□	Awning* (Vinyl)
■	■	■	■	■	■	Bumpers Rustproof, Front: Steel Reinforced Molded Plastic, Rear: Formed Aluminum w/End Caps
■	■	■	■	■	■	Entrance Door Locks (2) Latch, Deadbolt
■	■	■	■	■	■	Entrance Door Step (Manual)
□	□	□	□	□	□	Entrance Door Step (Electric) w/Door Jamb Switch
■	■	■	■	■	■	Entrance Door w/Screen Door
□	□	□	■	■	■	Graphics Lake Scene (Blue/Teal)
□	□	□	□	□	□	Luggage Rack & Ladder
■	■	■	■	■	■	Outlet 110-V, Curbside
■	■	■	■	■	■	Porch Light Interior Switch

23RC	27RC	27RQ	29RQ	31RQ	33RQ	
■	■	■	■	■	■	Sewer Hose & Storage Compartment
□	□	□	□	□	□	Shower Pullout w/Water Pump Switch
■	■					Storage Compartments Floor Lining, Steel Construction
		■	■	■	■	Storage Compartments Floor Lining, Side Lining in Rear, Steel Construction
■	■	■	■	■	■	Tire Tools Wrench, Leverage Bar
□	□	□	□	□	□	Trailer Towing Package w/Class II Hitch
□	□	□	□	□	□	Undercoating
□	□	□	□	□	□	Upgrade - Trim Package Dlx. Mirrors, Hard Cover for Spare, Rear Mud Flaps
■	■	■	■	■	■	Water Fill Door Lockable
■	■	■	■	■	■	Water Hook-Up
■	■	■	■	■	■	Wheel Covers
□	□	□	□	□	□	Wheel Liners Stainless Steel

## SYSTEMS

23RC	27RC	27RQ	29RQ	31RQ	33RQ	
■	■	■	■	■	■	Air Conditioning Pre-Wiring Roof
□	□	□	□	□	□	Air Conditioner Roof, 13,500-BTU
				□	□	Air Conditioners* Roof, Front/Rear: 13,500/11,000-BTU
				□	□	Air Conditioners* Roof, Front/Rear: 13,500/13,500-BTU
■	■	■	■	■	■	Batteries (2) Deep Cycle RV, in Stepwell Compartment
■	■	■	■	■	■	Electrical Control Center 110-V AC/12-V DC, 9-Amp. Batt. Charger, 45-Amp. Converter (32-Amp. on 23RC), DC Fuses, AC Breakers, 30-Amp. Power Cord
■	■	■				Furnace Ducted, Low Profile, Electronic Ignition, 25,000-BTU
		□	□	■	■	Furnace Ducted, Low Profile, Electronic Ignition, 30,000-BTU
				□	□	Furnace Ducted, Low Profile, Electronic Ignition, 35,000-BTU
■	■	■	■	■	■	Furnace Ducting System Flexible, above Floor
■	■	■	■	■	■	Generator Prep Kit Gas Line, 12-V Wiring
□	□	□	□	□	□	Generator* 4,000-Watt
				□	□	Generator* 5,000 or 6,500-Watt
■	■	■	■	■	■	LP Tank Permanent Mount w/Gauge
■	■	■	■	■	■	Monitor Panel Water, Holding & LP Tank Levels, Batt. Condition Gauge, Water Heater Ignition Switch w/Pilot Indicator Light, Water Pump Switch, Located in Galley
■	■	■	■	■	■	Water Heater 6-Gal., Electronic Ignition
□	□	□	□	□	□	Water Heater (Motoraid) & Rear Automotive Heater
□	□	□	□	□	□	Water Heater Winterization By-Pass Valve
■	■	■	■	■	■	Water Pump (Demand) 2 Switches, Interior Access

## SAFETY

23RC	27RC	27RQ	29RQ	31RQ	33RQ	
	■	■	■	■		Assist Handle Interior
■	■	■	■	■	■	Assist Handle Exterior
■	■	■	■	■	■	Assist Strap
■	■	■	■	■	■	Carbon Monoxide Detector/Alarm
■	■	■	■	■	■	Fire Extinguisher (10-B.C.)
■	■	■	■	■	■	Ground Fault Interrupter
■	■	■	■	■	■	LP Leak Detector/Alarm
■	■	■	■	■	■	Smoke Detector/Alarm

## 1994 BRAVE

23RC	27RC	27RQ	29RQ	31RQ	33RQ	
23'	27'	27'	29'7"	31'5"	33'10"	Length
10'9.5"	10'10"	10'11"	11'2.5"	10'11.5"	11'5"	Ext. Height w/Roof Air - Chevrolet
NA	NA	NA	NA	NA	10'11"	Ext. Height w/Roof Air - Chev. Opt.
NA	NA	NA	11'5"	11'	10'10.5"	Exterior Height w/Roof Air - Ford
8'	8'	8'	8'	8'	8'	Exterior Width
6'8"	6'8"	6'8"	6'8"	6'8"	6'8"	Interior Height
7'7"	7'7"	7'7"	7'7"	7'7"	7'7"	Interior Width
37.3 cu. ft.	47.1 cu. ft.	52.2 cu. ft.	73.8 cu. ft.	76.6 cu. ft.	83.6 cu. ft.	Exterior Storage
40 gal.	60 gal.	60 gal.	78 gal.	78 gal.	78 gal.	Fuel Capacity - Chevrolet
NA	NA	NA	75 gal.	75 gal.	75 gal.	Fuel Capacity - Ford
49 gal.	60 gal.	55 gal.	55 gal.	55 gal.	55 gal.	Fresh Water Capacity w/Heater
60 gal.	75 gal.	72 gal.	67 gal.	75 gal.	81 gal.	Holding Tank Capacity
60 lbs.	60 lbs.	60 lbs.	60 lbs.	100 lbs.	100 lbs.	LP Capacity
11,800 lbs.	12,300 lbs.	12,300 lbs.	14,800 lbs.	14,800 lbs.	14,800 lbs.	GVWR - Chevrolet Standard
NA	NA	NA	NA	NA	16,000 lbs.	GVWR - Chevrolet Optional
12,300 lbs.	14,500 lbs.	14,500 lbs.	14,500 lbs.	14,500 lbs.	NA	GVWR - Chevrolet Diesel Optional
NA	NA	NA	15,200 lbs.	15,200 lbs.	17,000 lbs.	GVWR - Ford
137"	158.5"	158.5"	178"	190"	208"	Wheelbase

## AUTOMOTIVE

23RC	27RC	27RQ	29RQ	31RQ	33RQ	
■	■	■	■	■	■	<b>Chassis - Chevrolet</b> 7.4L 454 V-8 Fuel-Injected Gasoline Engine, Automatic Transmission w/Overdrive & Cooler, Front Suspension: Gas, Rear Suspension: Leaf Spring, 630-CCA Battery/105-Amp. Alternator
□	□	□	□	□	□	<b>Chassis - Chevrolet</b> 6.2L Diesel Engine, Automatic Transmission w/Overdrive & Cooler, Front Suspension: Gas, Rear Suspension: Leaf Spring, 630-CCA Battery/105-Amp. Alternator
□	□	□	□	□	□	<b>Chassis - Ford</b> 7.5L 460 V-8 Fuel-Injected Gasoline Engine, Automatic Transmission w/Overdrive & Cooler, Front Suspension: Mono-Beam Axle w/Leaf Spring, Rear Suspension: Multi-Leaf Spring, 650-CCA Battery/130-Amp. Alternator
□	□	□	□	□	□	<b>Shocks (Gas) Front</b>
□	□	□	□	□	□	<b>Springs (Air) Rear Auxiliary, Chevrolet</b>
■	■	■	■	■	■	<b>Tires (Radial) w/Spare</b>

## DRIVER CONVENIENCES

23RC	27RC	27RQ	29RQ	31RQ	33RQ	
■	■	■	■	■	■	<b>Battery Charge Control</b> Dual, Automatic
□	□	□	□	□	□	<b>Battery Disconnect</b> Auxiliary
■	■	■	■	■	■	<b>Cruise Control</b>
■	■	■	■	■	■	<b>Curtain w/Track</b> Front Wrap-Around
■	■	■	■	■	■	<b>Heating/Air Conditioning</b> Automotive Blend Air System
■	■	■	■	■	■	<b>Hood Release</b> Exterior Key Locks
■	■	■	■	■	■	<b>Map Light</b>
■	■	■	■	■	■	<b>Mirrors (Rear View)</b> Low Mounted, Include Convex Element
■	■	■	■	■	■	<b>Seats w/3-Point Retracting Seat Belts</b> Reclining High-Back Design, Hinged Armrests, Lumbar Support, Swivel/Slide Pedestal
■	■	■	■	■	■	<b>Start Circuit</b> Auxiliary
■	■	■	■	■	■	<b>Steering</b> Power Assisted w/Tilt Wheel

## 23RC 27RC 27RQ 29RQ 31RQ 33RQ

■	■	■	■	■	■	<b>Storage Shelf (Overhead)</b>
■	■	■	■	■	■	<b>Sunvisors</b>
□	□	□	□	□	□	<b>Upgrade - Driver's Convenience Package</b> Map Pockets, Convenience Tray w/Beverage Holders & Ashtray, Floor Mats
■	■	■	■	■	■	<b>Windows</b> Sliding, w/Screens
■	■	■	■	■	■	<b>Windshield Wipers (Intermittent)</b>

## ENTERTAINMENT

23RC	27RC	27RQ	29RQ	31RQ	33RQ	
□	□	□	□	□	□	<b>C.B. Prep Kit</b> Antenna, Coax Wiring, 12-V Power Connection
□	□	□	□	□	□	<b>Entertainment Center (Patio)*</b> DC Receptacle, 110-V Outlet, TV Jack, Radio Antenna, AM/FM Radio, Cassette, Speakers (2), TV Table, Locking Door
□	□	□	□	□	□	<b>Inverter</b> 110-V for TV/VCR
■	■	■	■	■	■	<b>Stereo Power Switch</b> For Main or Auxiliary Battery Use
■	■	■	■	■	■	<b>Stereo w/Digital Clock (Cab)</b> Electronic Tune AM/FM/Cassette Deck w/Speakers (4), Roof-Mounted Flexible Rubber Antenna
□	□	□	□	□	□	<b>TV* (9" Color) w/Remote</b> Located in Bedroom
□	□	□	□	□	□	<b>TV (13" Color) w/Remote</b> Cabinet Exchange
□	□	□	□	□	□	<b>TV (13" Color) &amp; VCR w/Remotes</b> Switching System, Cabinet Exchange
□	□	□	□	□	□	<b>TV Enhancement Package</b> Required w/Some Options, Antenna (Amplified), DC Receptacles (2), Interior Jacks (2), Coax Wiring, Cable Input, Exterior Antenna Jack, TV Shelf or Stand

## INTERIOR

23RC	27RC	27RQ	29RQ	31RQ	33RQ	
□	□	□	□	□	□	<b>Bed (Front Overhead)</b>
■	■	■	■	■	■	<b>Cabinets</b> Wood-Framed Doors w/Brass & Inserts
■	■	■	■	■	■	<b>Carpeting w/Pad</b> Stain Resistant w/Scotchgard™ Protector
■	■	■	■	■	■	<b>Ceiling</b> Padded Vinyl Headliner
■	■	■	■	■	■	<b>Ceiling Lights</b>
■	■	■	■	■	■	<b>Ceiling Vent</b> Non-Powered, Lounge
■	■	■	■	■	■	<b>Ceiling Vent</b> Non-Powered, Galley
■	■	■	■	■	■	<b>Ceiling Vent</b> Non-Powered, Bedroom
■	■	■	■	■	■	<b>Ceiling Vent</b> Powered, Bathroom
■	■	■	■	■	■	<b>Clock</b> Decorator Style
■	■	■	■	■	■	<b>Color Themes (Interior)</b> Choice of Cadet (Blue), Sesame (Brown), Wood Violet (Eggplant)
□	□	□	□	□	□	<b>Color Theme (Interior)</b> Secret Garden (35th Anniversary)
■	■	■	■	■	■	<b>Divider Curtain</b>
■	■	■	■	■	■	<b>Divider Folding Door</b>
■	■	■	■	■	■	<b>Divider Sliding Door</b>
■	■	■	■	■	■	<b>Lamps</b> Decorator Style, Wall-Mounted in Lounge
■	■	■	■	■	■	<b>Windows</b> Tinted w/62% Light Transmittal

## GALLEY

23RC	27RC	27RQ	29RQ	31RQ	33RQ	
□	□	□	□	□	□	<b>Coffee Maker</b>
■	■	■	■	■	■	<b>Counter Extension</b> Flip Up
□	□	□	□	□	□	<b>Flooring (Vinyl)</b>
■	■	■	■	■	■	<b>Microwave Oven</b>

## Home. It's What We Do Best.

For 35 years, we have led the quest to create the best home on the road. As a result, Winnebago Industries has the largest and most advanced motor home manufacturing complex in the world. Computer-aided design and manufacturing controls our building process, from pre-testing to the finishing touches. We also run extensive tests on joint stress, climate performance and road conditions.



We invite you to visit us and see what sets a Winnebago Industries motor home apart from the rest. Tours begin at our visitor center where you'll learn about our history, advances in technology and the motor homes we build. Call us at (515) 582-3535 to set up your tour.



## Protect The Best Years Of Your Life.

Unbelievably, Winnebago Industries is one of the only RV manufacturers to use automotive, 3-point seat belts on most models. Our motor homes also have detectors for carbon monoxide, LP leaks and smoke. It's all part of our extra effort to create a safe environment.



## No Surprise That Our First Innovation Had To Do With Comfort.

Thirty-five years ago, our first task was to create a comfortable seat cushion. Today we continue with a new strategy to insure our motor homes are the most livable: Home Comfort Design. It pushes us to make the best use of space for living, storage and style. You'll feel the difference.



## Get Your Promises In Steel.

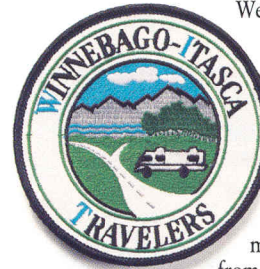
Each motor home we make has a steel cab substructure that protects you and assures the integrity of the vehicle for years. Steel may seem like common sense, but the fact is, many others still use wood for their foundations and sometimes even their firewalls.

## Beauty Is Built In.

We're proud to say we produce many more of our own components. Sure, we could buy them off the shelf. But by building our own furniture and cabinetry, we guarantee they fit exactly. It also allows us to provide things like Scotchgard™ Protector as standards. We're a company that believes this kind of perfection is important.



## You're In Good Company.



We make it easy to be an enthusiast. With the Winnebago-Itasca Travelers (WIT) Club, you can meet Winnebago Industries owners in your area and access special services like professional trip routing and mail forwarding. The WIT Club Magazine will keep you up-to-date on rallies and caravans.

The fun continues when you join Winnebago Motorsports. Created to pay homage to the world of motorsports, you'll see us everywhere from car races to speedboat events. We provide hospitality at events, a full compliment of racing merchandise and chances to meet the racing celebrities.



## The Great Wall Of Winnebago.

Every Winnebago Industries motor home has our innovative Thermo-Panel® wall structure insulating and strengthening the shell without adding a lot of weight. When the cold snap comes through, you'll be glad we thought of it.

## You Are Not Alone.

If you need help on the road, Winnebago Industries' free round-the-clock Road Assistance Service is a phone call away. It's part of our Preferred Care program taking care of you down the road.

We also have one of the most comprehensive warranty packages in the industry. The standard warranty protects your motor home for 12 months or 15,000 miles. At expiration of the basic warranty, the coverage continues for 36 months/36,000 miles on structural components. A

10 year limited warranty protects the roof and walls, and the 100% stain-free carpeting carries an extensive stain and wear warranty. We can provide this kind of coverage because our vehicles last. In fact, they have the highest overall resale value of competitive motor homes on the road.





Crawl into bed and you'll feel the difference immediately; the Deluxe Supreme™ mattress supports you in total comfort. If you're like many motor home owners, you'll also enjoy having so much storage space in the overhead cabinet, shirt closets and nightstands.

We've worked to make the best use of space available, and that's especially obvious in the wardrobe (right). With drawers, shelves and full-length hanging room, it's easier to get everything in. The doors of the wardrobe are mirrored. Shown here is the single doored wardrobe.

The shirt closet (far right) has the length for hanging shirts straight. Some floorplans come with several shirt closets, and each has a separate wardrobe.

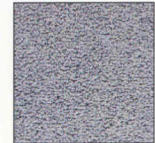




## Interior Color Themes

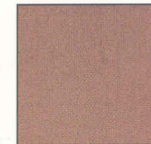


Accent



Carpet

*Cadet*



Accent



Carpet

*Sesame*



Accent

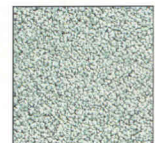


Carpet

*Wood Violet*



Accent



Carpet

*Secret Garden (35th Anniversary)*



In addition to our new interior colors and exterior graphics for this year, we created a special color scheme to celebrate our 35th Anniversary. This limited edition design beautifully accents the interior woodwork, and is fully coordinated from the cab to the bedroom.

We craft all our furniture and cabinetry by hand so it fits our specifications exactly. While most of our specifications concern such things as space allocation and weight ratios, we also have comfort standards which must be met. Sit down on the couch and you'll see what we mean. It's all part of an engineering philosophy we call Home Comfort Design.







You'll see things here you won't see on other competitively priced motor homes in its class – namely because Brave comes with expansive front and side windows, a low dash and low-mounted wipers. The adjustable cab seats swivel around to the living area to give you more space for relaxing.



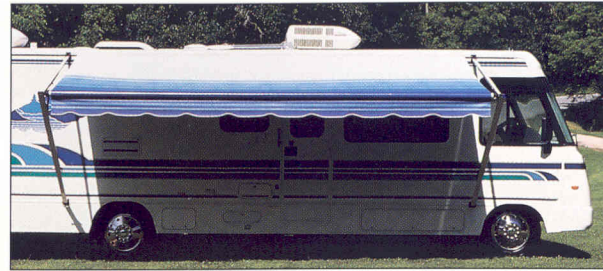
The instrument panel is equally impressive – the design allows gauges to be read at a glance and puts all switches within easy reach.



We took extra care to make the bathroom just right. With make-up lights, extra towel space and plenty of room for toiletries, we get everything in without making you feel squeezed.



For any serious cooking, you have a recessed sink, low-mounted microwave, and a range/oven combination with its own vent. You'll also appreciate the monitor panel with information on water, LP and holding tank levels, battery condition, water heater pilot status and a water pump switch.



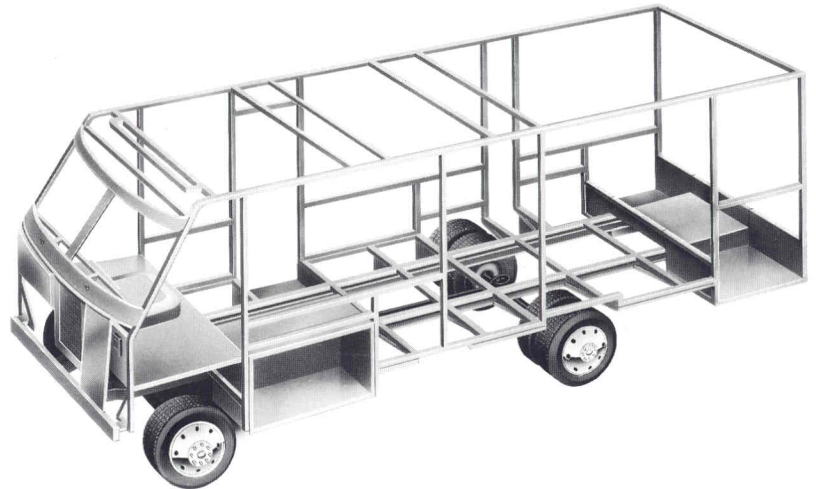
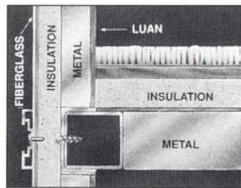
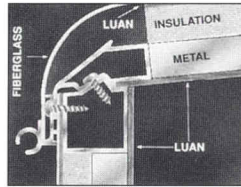
The new awning is an extraordinarily practical option. Its obvious function is to provide the perfect shaded deck, but it also helps save energy, keeping a hot summer sun from beating directly on the motor home. The awning is an option on every floorplan except the 23RC.

23RC

Atop the sleek sidewalls sits one of the most dependable roofs in the industry. The roof's insulating Thermo-Panel® construction has a sloping "crowned" design to help water runoff. Since the surface is a single piece of fiberglass, it won't tear, puncture or deteriorate from sunlight and heat the way rubber roofs can. We believe in this roof so much, we've included a 10 year limited warranty.



This motor home has one of the smartest front ends of any. All lights and turn signals are recessed and securely mounted, and the hood tilts out of the way for easy fluid checks.



Winnebago's exclusive jointing system strengthens the roof, sidewalls and floor where they meet. The roof design provides exceptional moisture runoff and the floor joint locks into place so the weight of the wall is on the steel floor substructure. Steel is found throughout the cab, dash, floor and foundation, providing a solid mounting surface for the windshield and 3-point seat belts. The sidewall structure, roof structure and underbelly are of aluminum for light, yet tough support.

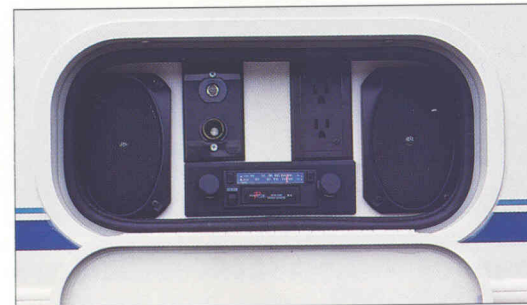


Look no further to find what sets Brave apart from the pack. The attractive front-end profile and streamlined smooth walls and roof add a dimension of aerodynamics you won't find elsewhere. And because it's designed to be driven, every Brave comes with radial tires.



There's a reason storage is often neglected by other motor home manufacturers: it's not a place where travelers spend much time. Your belongings, however, do. Brave has weather seals that keep moisture and dirt out, edge-to-edge carpeting to protect your bags, and locks to keep everything secure. The pull-out shower, with both hot and cold water and its own pump switch, is a practical option for cleaning up after a dusty day at the raceway.

Options like the locking patio entertainment center put any average motor home to shame. It comes with its own AM/FM cassette deck, TV stand, TV hookup, built-in speakers, electrical outlets and stereo antenna.



## Precisely Engineered For Taking It Easy.

Some say you haven't lived until you've heard the rumble of a perfectly tuned, high-performance engine at the speedway. They'll tell you nothing compares to being there when 700 horses jump to life. It's pure adrenaline.

We all know the feeling, whether we follow stock cars or the rose-chested grosbeak. And we've felt the satisfaction, heading home after spending a day with our favorite pastime. It's especially nice to come home to the Brave.<sup>®</sup>

There's no fuss with the Brave because we've stocked it with the features the best getaways are made of. You can tune into the post-race on the outdoor entertainment center, dish yourself some ice cream and pull a couple lawn chairs from the generous storage bays.

When evening falls, you'll appreciate the comfort we've

laid out indoors. There's plenty of room to stretch out and relax. Or you can take advantage of the complete kitchen to make a hearty dinner. The point is, Brave won't get in the way of how you like to live.

Or, for that matter, drive. Because of its sleek profile, Brave leads its peers in drivability. For those who aren't used to the feel of a motor home, we added smoother handling, a larger windshield, easy-to-read gauges and handy controls. Take it out for a once-around and you'll notice the difference.

It's a feeling you'll be driving for years. With the highest resale value in its class, Brave holds its value longer. Plus you'll get a better deal to begin with; the Brave is a winner of *Consumers Digest's* prestigious Best Buy award.

We earn honors like these because Winnebago has been fine-tuning rest and relaxation for 35 years. Brave was built on this tradition, the tradition of meeting the requirements of the best vacations. So you'll always be able to enjoy the things that rev your engine.

