

Sandpiper



SELECT SERIES
**DESTINATION
TRAILERS**
FIFTH WHEELS







Thank You!

At Sandpiper we appreciate our loyal customers, and want to say "Thank You". To future customers, we would like to extend to you an invitation to become part of the Sandpiper family and experience camping the Sandpiper way.



Upload a photo of you and your Sandpiper on our Facebook page keyword "Sandpiper RV's"

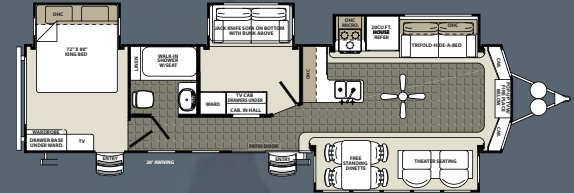






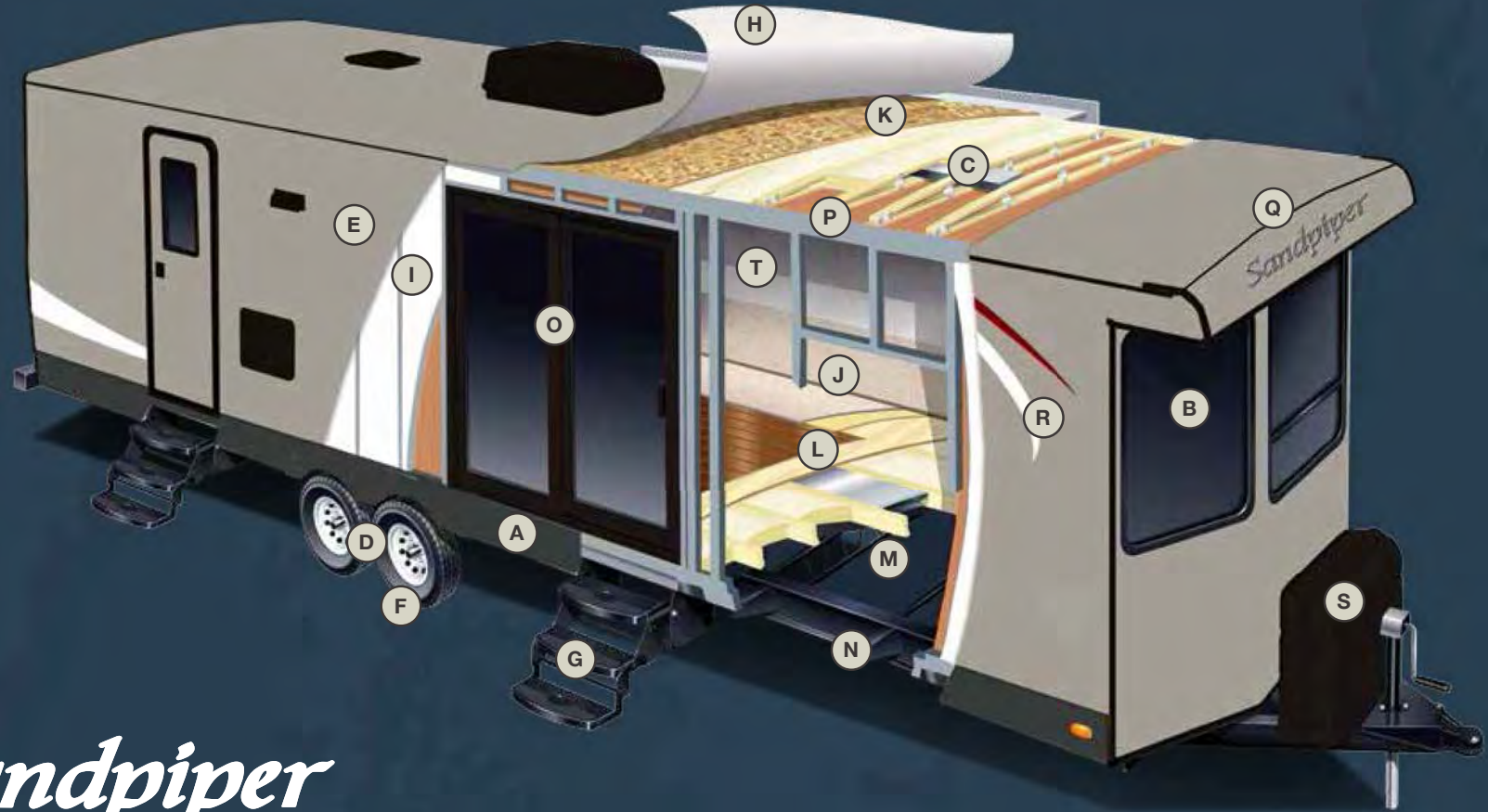
Sandpiper

385FKBH



The 385FKBH leaves nothing out when it comes to entertainment. While you're inside enjoying the abundant living area, notice the opposing slides that offer you an expansive living area. In the kitchen the storage is endless with more countertop space than ever offered before. The intelligently designed 385FKBH also has a bunk area that is both private and spacious.





Sandpiper

BUILT TO LAST.

The Sandpiper is built to last using only the best materials to ensure that your coach is in it for the long haul. Careful engineering, well appointed craftsmanship and an uncompromising sense of pride go into every trailer that we produce. Rest assured that your Sandpiper is built for Luxury Living.

- | | | |
|-----------------------------------------------------------------------------------------------------------------------------------------------------------------------------------------------------------------------------------------------------------------------------------------------------------------|------------------------------------------------------------------------------------------------------------------------------------------------------------------------------------------------------------------------------------------------------------------------------------------------------------------|----------------------------------------------------------------------------------------------------------------------------------------------------------------------------------------------------------------------------------------|
| <p>A. ROLLED ALUMINUM SIDED SKIRTING</p> <p>B. SAFETY GLASS TINTED WINDOWS (80%)</p> <p>C. DUCTED 15K BTU AIR CONDITIONING</p> <p>D. DEXTER AXLES WITH AUTO ADJUST BRAKES</p> <p>E. LAMINATED VACUUM BONDED ALUMINUM SIDEWALLS</p> <p>F. E RATED RADIAL TIRES</p> <p>G. HICKORY SPRINGS™ RADIUS ENTRY STEPS</p> | <p>H. SEAMLESS RUBBER ROOF (12 YR. WARRANTY)</p> <p>I. BLOCK FOAM INSULATION</p> <p>J. RESIDENTIAL STAIN RESIST CARPET W/PADDING</p> <p>K. 3/8" ROOF DECKING (FULL WALK-ON ROOF)</p> <p>L. 5/8" TONGUE AND GROOVE PLYWOOD FLOORING</p> <p>M. ENCLOSED HEATED UNDERBELLY</p> <p>N. I-BEAM POWDER-COATED FRAME</p> | <p>O. 60" PATIO DOOR WITH TINTED GLASS AND VERTICAL BLINDS</p> <p>P. RADIUS 94" CATHEDRAL CEILINGS</p> <p>Q. SLEEK RADIUS ROOF</p> <p>R. HIGH GLOSS GEL-COATED COLOR MATCHED FIBERGLASS EXTERIOR</p> <p>S. TWO (2) 30 LB. LP TANKS</p> |
|-----------------------------------------------------------------------------------------------------------------------------------------------------------------------------------------------------------------------------------------------------------------------------------------------------------------|------------------------------------------------------------------------------------------------------------------------------------------------------------------------------------------------------------------------------------------------------------------------------------------------------------------|----------------------------------------------------------------------------------------------------------------------------------------------------------------------------------------------------------------------------------------|

STANDARDS AND OPTIONS

EXTERIOR FEATURES

- High gloss gel coated color matched exterior fiberglass
- Enclosed and heated dump valves
- Large tinted windows with 80/20 UV prohibitor
- Dexter auto adjust brakes
- Hickory Springs™ radius triple steps with 9" riser (no pinched fingers)
- Dometic™ "One-Touch" electric awning with adjustable arms, and integrated LED light
- 16" Radial tires-E Rated
- Automotive-style fender skirts
- Hitch light
- Porch light with interior switch
- Patio recreation light with interior switch
- 30 lb. double LP tanks with auto change over
- 2 exterior speakers
- Rain gutters with extra long drip spouts (prevents black streaking)
- Exterior folding grab handle
- 60" Patio door

INTERIOR FEATURES

- 94" interior height with 6'4" slide heights
- Radius "barreled" ceiling
- Residential stain resistant carpet
- Beauflor® linoleum
- Swivel glider recliners
- Four color coordinated interiors (Granite, Pewter, Pecan, Walnut)
- Full extension ball bearing drawer glides
- Stone cast under mounted kitchen sink
- Washer/dryer prep (select floorplans)
- Handmade cabinetry with screwed lumber core stile construction
- Residential countertops
- Dual zone A/C prep (living room and bedroom)
- Recessed residential LED lighting throughout

- Colored shower surround with etched tile pattern
- Upgraded adjustable shower head with shelf
- Accent paneling in slideouts
- Accent lighting over dinette
- Walk-in shower (select models)
- Crown molding over kitchen cabinets
- Extra large picture windows throughout
- Vented side windows in slideouts
- TV antenna with booster
- Solid wood drawer fronts with birch sides
- Upgraded raised panel cabinet doors with designer rails
- Bedroom slideout fascia
- Serta® memory foam mattress
- 20 cu. ft. Whirlpool stainless steel refrigerator
- Stainless steel kitchen package
- 40" LED HDTV with Sony DVD and premium soundbar
- Designer window treatment accented per decor
- Ceiling fan
- Hide-a-bed sofa with tri-fold
- Residential carpeting
- Center mounted A/C unit for even cooling
- Quilted bedspread
- Home decor package
- Trash receptacle in kitchen

APPLIANCES/SYSTEM

- Ducted Dometic® 15K A/C with quick cool
- Dual zone thermostat for living room and bedroom A/C
- Floor ducted 35,000 BTU furnace
- Three burner High output range with 22" oven
- 20 cu. ft. Whirlpool stainless steel refrigerator
- Interior monitor panel for holding tanks

- Interior thermostat for heating and cooling
- Flush floor hydraulic slideouts (per floorplan)
- Satellite and cable hookup with RG-6 cable for high quality picture
- Porcelain foot flush toilets
- Full coach water filtration system
- 10 Gal. DSI water heater
- 65 Amp converter
- Water filter system
- Fantastic fan in bath

CONSTRUCTION

- Welded aluminum-framed, vacuum bonded laminated superstructure
- 2" x 3" floor joists 12" on center
- 5/8" tongue & groove plywood floor decking
- 3/8" roof decking (full walk-on roof)
- Cambered powder coated frame with rust prohibitor
- Fully enclosed heated underbelly
- 5" truss roof rafters
- R-10 sidewall construction

FOR YOUR SAFETY

- Smoke alarm
- Fire extinguisher
- Breakaway switch (battery hook-up required)
- Dead-bolt lock on entry door
- Liquid propane (LP) gas detector
- Fire escape windows

POLAR TECH PACKAGE

- Thermal pane windows
- Heated holding tanks
- R-38e roof & all floors insulation
- 40K btu furnace
- Double fiberglass insulation in roof & floor

POPULAR OPTIONS

- Solid surface countertops in kitchen
- Free-standing dinette with 4 chairs
- Washer and dryer (per floorplan)
- Sofa IPO bottom bunk (per floorplan)
- Second air conditioner-bedroom
- Fantastic fan with power hood operated with wall switch
- 12 Volt heated holding tanks
- R-38e Insulation package
- Beauflor® wood plank pattern linoleum
- Central vacuum
- Bedroom ceiling fan
- Roof ladder

SANDPIPER SIGNATURE PACKAGE

- Residential stain resistant carpet
- Serta® memory foam mattress
- Radius 94" cathedral ceilings
- "One Touch" Dometic® electric awning w/LED lights
- Stainless steel kitchen package
- 15K BTU air conditioner
- King bed standard
- Ceiling fan in living room
- Décor package (clock, pictures, coat hook)
- 50 amp service
- High gloss gel coated fiberglass color matched exterior
- 10 gal. G/E water heater w/DSI
- Residential pullout kitchen faucet
- 20 cu. ft. Whirlpool stainless steel refrigerator
- Tinted patio door
- 40" LED HDTV with Sony DVD and premium soundbar
- Washer/dryer prep (where available)
- Fantastic fan in bathroom
- Tri-fold hide-a-bed
- Designer tile Beauflor®

DECOR OPTIONS



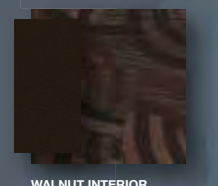
GRANITE INTERIOR



PEWTER INTERIOR



PECAN INTERIOR



WALNUT INTERIOR

FEATURES



Theater seating with footrests and console (per floorplan).



The tri-fold hide-a-bed offers more sleeping options. (standard per floorplan)



40" LED HDTV with premium soundbar and Sony DVD player.



Contemporary ceiling fan.



Enjoy the warmth and comfort of the electric fireplace. (per floorplan)

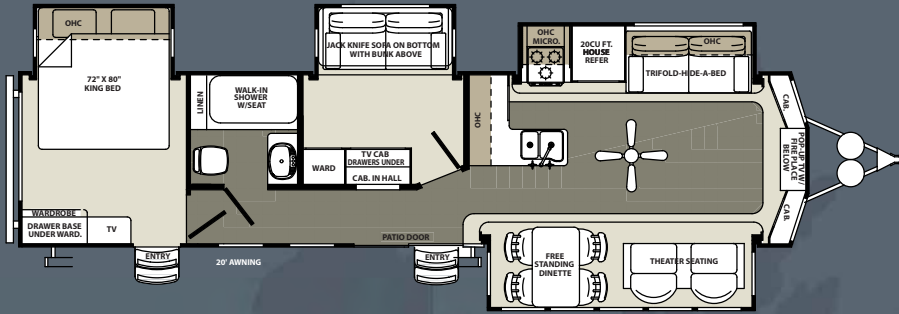


Stainless Steel appliance package.

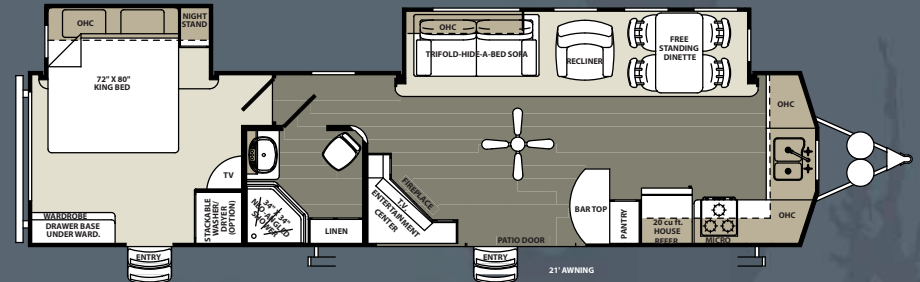


Dual zone thermostat for living room and bedroom A/C

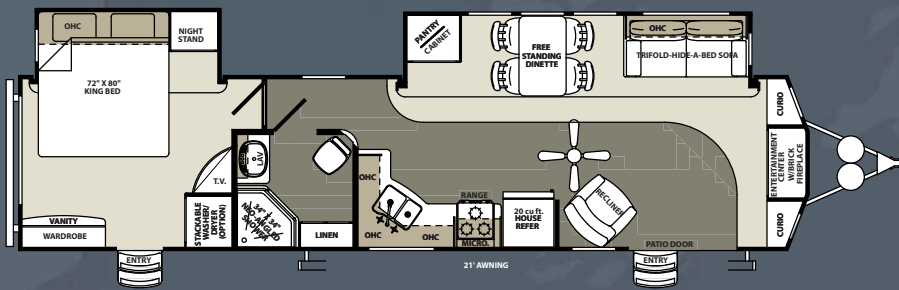
385FKBH



392FK



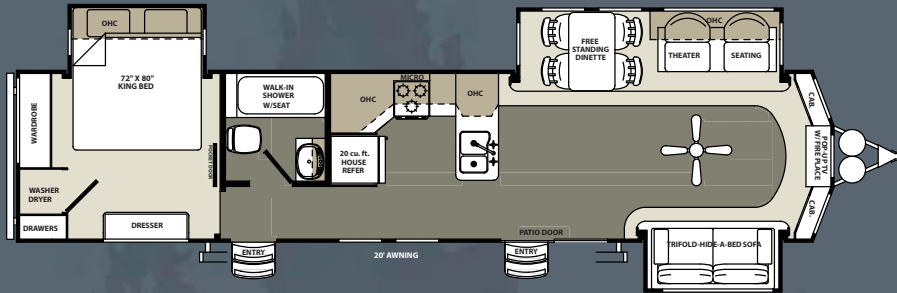
392FLKB



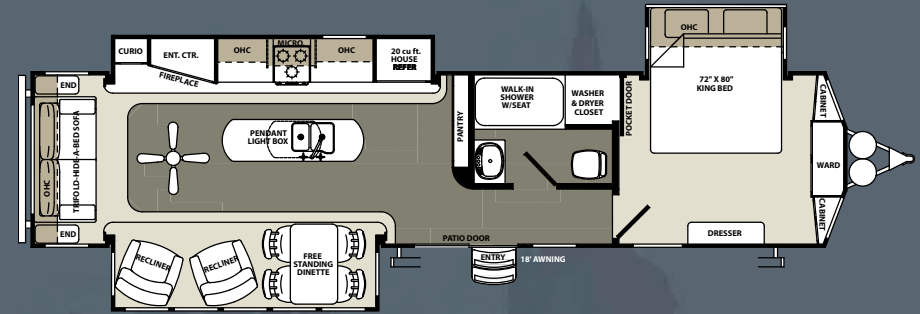
SPECS

MODEL	385FKBH	392FK	392FLKB
Hitch	1,615	1,302	2,423
Ship	10,990	9,603	9,165
GVWR	13,615	13,297	13,060
Cargo	2,625	3,694	3,895
Length	40' 3"	40' 1"	40' 1"
Height	12' 7"	12' 7"	12' 7"
Awning	20'	21'	21'
Gray	64	89	64
Black	32	54	54
Fresh	64	64	64

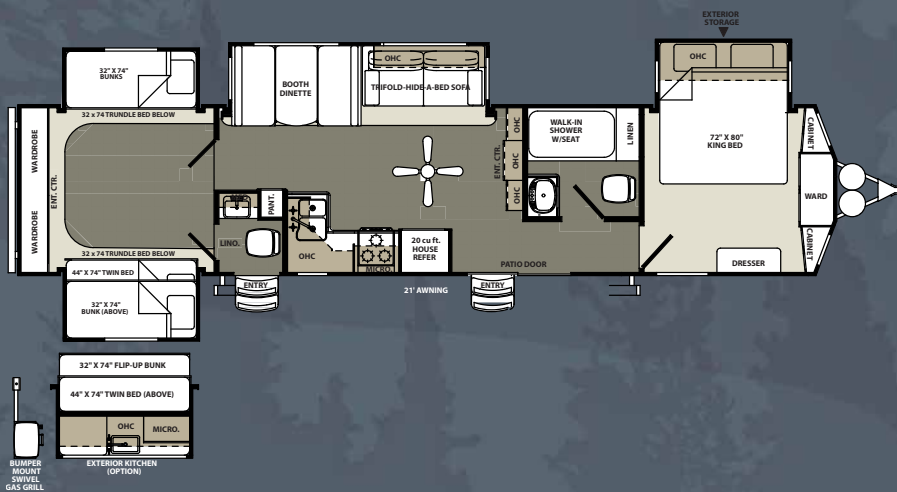
393CK



393RL



402QB



SPECS

MODEL	393CK	393RL	402QB
Hitch	1,245	1,379	1,180
Ship	10,228	10,667	11,230
GVWR	13,245	13,379	13,180
Cargo	3,017	2,712	1,950
Length	42' 1"	41' 6"	43' 0"
Height	12' 7"	12' 7"	12' 7"
Awning	20'	19'	20'
Gray	64	86	108
Black	32	54	108
Fresh	64	64	64

Sandpiper

DESTINATION TRAILERS



PRE-DELIVERY INSPECTION FACILITY

20,000 square feet of quality assurance. The bare essentials for a premium product. This state-of-the-art facility gives immediate daily feedback to production for quality assurance in every unit built.



Forest River, Inc. encourages our customers to purchase their Forest River products from a local dealership whenever possible for the following reasons:

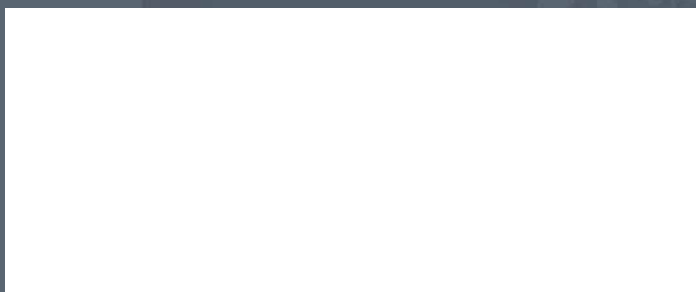
- 1) Forest River, Inc. dealers are independently owned and operated businesses so priority service and scheduling is at their discretion and is often provided to customers that purchased their unit at that dealership.
- 2) Purchasing locally allows customers to establish meaningful relationships with a dealer, enhancing the RV experience through assistance with product questions, user tips or RV regulations for your state or country, and much more!
- 3) Canadian customers must meet requirements to bring an RV purchased out of the country to their home. These requirements may involve additional inspections and certifications, taxes and fees. Your local Canadian Dealer is a professional at meeting these requirements.
- 4) Scheduling timely warranty repairs and adjustments through a local dealership provides far greater flexibility and convenience to you, the customer!

It is the goal of Forest River, Inc. that all of our RV owners fully enjoy the RV experience and that customer satisfaction meets or exceeds their expectations!

24/7 EMERGENCY ROADSIDE ASSISTANCE

For a worry-free ownership experience Forest River includes one year of Coach-Net RV Technical & Roadside Assistance with each RV purchase. Whether new to the RV lifestyle or an experienced RV enthusiast, Forest River owners have 24/7 access to technical, operational and emergency road service coverage throughout the US & Canada. Coach-Net's fast, dependable service is just a phone call away.

Coach-Net®
RV Technical & Roadside Assistance



Learn More
Scan this barcode using a QR Reader on your smart phone to learn more about Forest River.



A Berkshire Hathaway company.

Forest River, Inc.
2012 Century Dr.
Goshen, IN 46528
(574) 389-4600
www.forestriverinc.com/Sandpiper
www.forestriveraccessories.com



All specifications herein are based on the latest product information at the time of printing. Forest River reserves the right to make changes in colors, materials, equipment and specifications at any time without notice and assumes no responsibility for any errors in this brochure. The photos in this brochure may show props and/or optional equipment. PLD418

© 2015- Sandpiper- a division of Forest River Inc.
A Berkshire Hathaway company