

BOUNDER® / BOUNDER CLASSIC

# BOUNDER® / BOUNDER CLASSIC



2015

CLASS A GAS





Bounder is ready for your next adventure



BOUNDER 34T SHOWN IN CARAMEL KISS DÉCOR WITH SPICE WOOD CABINERY



BOUNDER 34T SHOWN IN WINTER HAVEN DÉCOR WITH CINNABAR WOOD CABINERY



With the freedom of the open road stretched out before you, the possibilities seem endless. Bounder will see to it your dreams become reality as it offers all the modern conveniences and comforts you deserve.

#### Bounder Top Features

- Sony® A/V Electronics
- Sony® LED TVs
- LED Lighting
- Composite Tile Flooring Living/Bath
- Electronic Fireplace (Optional)
- Residential Refrigerator (Optional)
- Exterior Entertainment Center (Optional)
- King Bed (Optional- 33C)
- One-Piece Panoramic Windshield
- 7' Interior Ceiling Height
- Soft-Touch Vinyl Ceiling
- 22.5" Aluminum Wheels
- Power Platform® Chassis Construction
- 4-Point Auto Hydraulic Leveling Jacks



Go to [FleetwoodRV.com](http://FleetwoodRV.com) and build your own Bounder!



Caramel Kiss



Smoked Slate



Winter Haven

Both inside and out, there is a wide selection of colors, styles and finishes. From the moment you lay your eyes on an Bounder, the high-style graphics and décor collection welcome you with gracious beauty and contemporary design. We've paid attention to every detail. So wherever you are, you'll feel right at home.

## CARAMEL KISS

SOFA	ACCENT	BEDSPREAD	COUNTERTOP	FLOORING	CARPET

## WINTERHAVEN

SOFA	ACCENT	BEDSPREAD	COUNTERTOP	FLOORING	CARPET

## CABINERY

### CINNABAR



### SPICE



## INTERIOR THROUGHOUT

- 120V/12V AC/DC Converter
  - Water Pump Switches in Multiple Locations
  - 34,000 Btu/h Furnace
  - 10-Gallon Quick Recovery Water Heater w/Direct Spark Ignition (Gas/Electric)
  - Complete PEX Plumbing System
  - Deluxe Roller Bearing, Full-Extension Drawer Guides & Transit-Ship Locks
  - Dual 6V Deep-Cycle House Batteries
  - Dual Roof A/C High-Efficiency w/Solar Panel, Chill Grills & Bedroom Heat Pump
  - Energy Management System
  - LED Lighting
  - LG Solid-Surface Countertops
  - Solid Divider Doors
  - TV Antenna w/Signal Booster
  - Full HD Video System
  - Wall Switches
  - Water Heater Bypass Valve
  - Whole-Coach Water Filtration System
  - Wood Drawers
  - Soft-Touch Vinyl Ceiling
  - Computer Workstation In-Dash
  - 1,200-Watt Inverter
- Optional**
- CSA Package (Canadian Specs)
  - Washer/Dryer
  - Neutral Loss Protection
  - Winegard® Stationary DSS System
  - Blu-ray® Home Theater Sound System
  - Day/Night Double-Roller Shades

## DRIVER CONVENIENCE

- 3-Point Seatbelts at Driver & Front Passenger Seats
- AM/FM Radio w/CD Player, Satellite Radio-Ready
- Auto A/C Heater Combo
- Auxiliary Start Circuit
- Battery Disconnect Switches
- Cruise Control
- Soft-Touch Automotive Dash
- Dash Fans
- Power Front Windshield Shade
- Manual Roller Sades at Driver/Passenger Window
- Driver/Front Passenger Captain's Chairs w/Reclining Back/Slide Controls
- Passenger Chair Footrest
- Intermittent Wiper Control
- Low-Profile Engine Cover
- Monitor Panel in Dash
- Radio Switch Main/Auxiliary Power
- Tilt Steering Wheel
- Remote/Heated Rear-View Mirrors w/Side-View Cameras
- Dual Monitors

## GALLEY

- Sharp® Convection Microwave Oven
  - 12 cu.ft. Dometic® 4-Door Refrigerator w/Icemaker
  - Adjustable Cabinet Shelves (Select Cabinets)
  - Demand Water Pump
  - Fan-Tastic® Power Roof Vent
  - Large Drawers Under Dinette
  - Large, Double Stainless-Steel Sink
  - Raised-Panel Cabinet Doors
  - Single-Lever Galley Faucet w/Pullout Sprayer
  - Sink Cover/Cutting Board
  - Tile Flooring
  - Wastebasket
  - 3-Burner Cooktop
  - Dream Dinette Mechanism
  - Solid-Surface Backsplash
  - Galley Window
  - Convenient Galley Slide-Out w/Shelf (34T)
- Optional**
- 3-Burner Range w/Oven
  - Residential Refrigerator

## LIVING ROOM

- 40" LED HDTV
  - DVD Home Theater Sound System
  - Entry Assist Handle
  - Residential Seat Styling
- Optional**
- 32" LED HDTV in Front Overhead (33C, 34T, 35K)
  - Facing Dinette
  - Electric Fireplace
  - Free-Standing Dinette w/Credenza (33C, 34T, 35K)
  - Sofa Sleeper w/Air Mattress & Footrest (36E)

## BEDROOM

- Exclusive Dream Easy Mattress
  - Bedspread w/Décor Pillows
  - Padded Headboard
  - Pleated Shades
  - Rear Speakers
  - 32" LED HDTV
  - Carpet Flooring
- Optional**
- King Bed (33C)

## BATHROOM

- Fan-Tastic® Power Roof Vent w/Wall Switch
- Glass Shower Enclosure w/Skylight & Lower Step Threshold
- Hardwood Bath Door/Trims
- Molded Shower Enclosure
- Tile Flooring
- Porcelain Toilet w/Water Saver
- Skylight in Shower
- Toilet Tank San-T-Flush™ System
- Large Split Bath (34T)

## SAFETY/CONVENIENCE (INTERIOR)

- 10 ABC Fire Extinguisher
- Carbon Monoxide Detector/Alarm
- Propane Detector/Alarm
- Smoke Detector/Alarm
- Multiple Seatbelt Locations

## EXTERIOR THROUGHOUT

- 5.5 kW Onan® MicroQuiet Generator
  - 50-Amp Service
  - Dual-Battery Charge Control
  - Dual-Pane Windows w/Screens
  - Patio Receptacle
  - Fiberglass Front/Rear Caps
  - 4-Color Full-Body Paint
  - Heated Water & Holding Tank Compartments
  - Mud Flaps
  - Park Cable Receptacle
  - Patio Awning - Electric
  - Utility Compartment w/Exterior Shower
  - ABS Wheel Well Trims
  - TV/12V Jack in Doorside Compartment (Select Models)
- Optional**
- Protective Front Mask
  - Exterior Entertainment Center
  - Rear Ladder

## AUTOMOTIVE

- 4-Point Automatic Levelers
- Large One-Piece Bonded-in Windshield
- Trailer Hitch w/7-Pin Electrical Hook-Up<sup>1</sup>
- Underhood Utility Light
- 22.5" Aluminum Wheels
- Wiper System with Large Swept Area

## SAFETY/CONVENIENCE (EXTERIOR)

- Entry Door w/Screen Door & Deadbolt Lock
- Porch Light (Doorside)
- Power Entry Step
- Remote/Heated Rear-View Mirrors w/Side-View Cameras
- Automotive Safety Glass
- Daytime Running Lights
- Hydraulic 4-Wheel Disc Brakes w/4-Wheel ABS

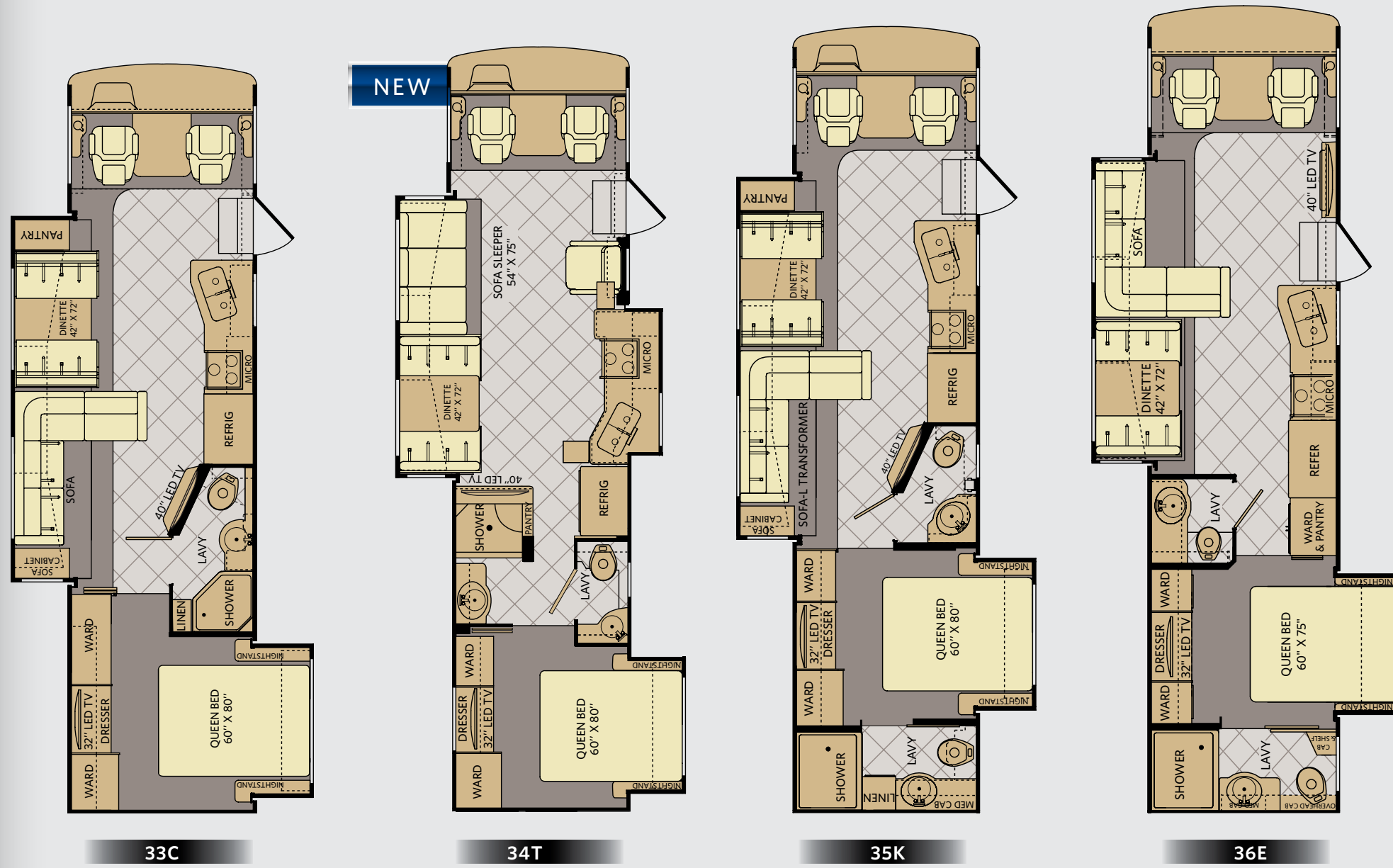
## STORAGE

- EZ Store Compartment on Living Area Slide-Outs
- Gas Lift Strut Supports
- Hidden, Stainless-Steel Latch Rods
- Pass-Through Storage (Select Models)
- Side Swinging Luggage Doors (Select Locations)
- Large Lighted Roto- Molded Polyethylene, Side Swing, Insulated Aluminum Luggage Doors w/ Single Paddle Latch & Corrosion Resistant Steel Hinges

## BODY STRUCTURE

- Aluminum Interlocking Floor/Wall/Ceiling Framing
- Power Platform® Construction (Fleetwood RV Exclusive)
- Basement Floor Configuration
- Radius Roof w/Ducted A/C
- Vacu-Bond® Floor & Ceiling
- Vacu-Bond® Walls w/Smooth Exterior High-Gloss Fiberglass





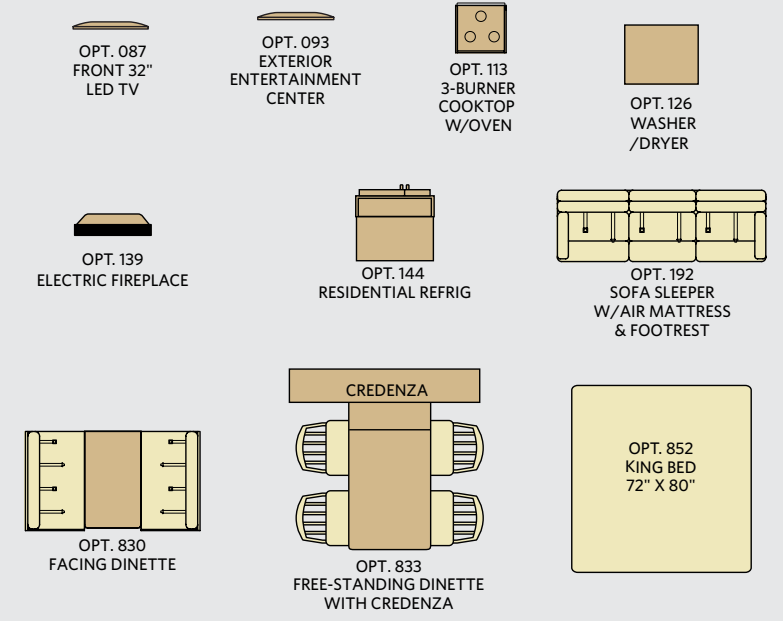
**33C**  
AVAILABLE OPTIONS : 087, 093, 113, 126, 139, 144, 830, 833, 852

**34T**  
AVAILABLE OPTIONS: 087, 093, 113, 126, 139, 144, 830, 833

**35K**  
AVAILABLE OPTIONS: 087, 093, 113, 126, 139, 144, 830, 833

**36E**  
AVAILABLE OPTIONS: 093, 113, 126, 139, 144, 192, 830

## FLOOR PLAN OPTIONS



### DISCLAIMERS

- GVWR (Gross Vehicle Weight Rating) is the maximum permissible weight of this fully loaded motor home. The GVWR is equal to or greater than the sum of the (UVW) unloaded vehicle weight plus the (OCCC) occupant cargo-carrying capacity.
  - GAWR (Gross Axle Weight Rating) is the maximum permissible loaded weight a specific axle is designed to carry.
  - GCWR (Gross Combined Weight Rating) is the value specified by the motor home manufacturer as the maximum allowable weight of this motor home with its towed vehicle. Towing and braking capacities may be different. Refer to Fleetwood and chassis manufacturer's manuals for complete information.
  - Length measured from front bumper to rear bumper (excludes accessories).
  - Excludes safety equipment and awnings.
  - Motor homes feature a body width over 96" which will restrict your access to certain roads. Before purchasing, you should research any state and/or province road laws which may affect your usage.
  - Tank manufacturer's listed water capacity (WC). Actual propane capacity is 80% of water listing as required by the safety code.
- † The chassis manufacturer recommends the installation of a supplemental brake control system to activate the brakes on the vehicle or trailer you are towing. Hitch receiver ratings expressed are maximum for the hitch receiver installed and may require the purchase of additional equipment that is dependent on the weight of the towed load. Consult with hitch receiver manufacturer for further information.
- \* UVW and OCCC are found on the label containing the federal certification tag in each RV.

## CHASSIS

MODELS	33C	34T	35K	36E
Wheelbase (inches)	208"	228"	228"	228"
GVWR (lbs) <sup>1</sup>	22,000	22,000	22,000	22,000
Front GAWR (lbs) <sup>2</sup>	8,000	8,000	8,000	8,000
Rear GAWR (lbs) <sup>2</sup>	15,000	15,000	15,000	15,000
GCWR (lbs) <sup>3</sup>	26,000	26,000	26,000	26,000
Hitch Rating Weight (lbs) <sup>†</sup>	5,000	5,000	5,000	5,000
Tongue Weight (lbs) <sup>*</sup>	500	500	500	500
Fuel Capacity (gal)	80	80	80	80

### POWER PLATFORM® CHASSIS

**Model:** Ford®  
**Engine:** 6.8L Triton V10  
**Transmission:** Ford®, 5-Speed, Automatic w/Overdrive

**Alternator:** 175 Amp  
**Torque:** 457 lb-ft @ 3,250 RPM  
**Horsepower:** 362HP

## DIMENSIONS & CAPACITIES

MODELS	33C	34T	35K	36E
Overall Length (inches) <sup>4</sup>	34' 3"	35' 5"	36' 3"	36' 3"
Overall Height (with A/C)	12' 10"	12' 10"	12' 10"	12' 10"
Overall Width (maximum) <sup>5, 6</sup>	102"	102"	102"	102"
Interior Height (maximum)	84"	84"	84"	84"
Interior Width (maximum)	96"	96"	96"	96"
Patio Awning Width	17'	17'	17'	17'
Interior Storage (cu. ft.)	123	123	126	146
Exterior Storage (cu. ft.)	110	118	118	118
Fresh Water Holding Tank (gal)	85	85	85	85
Grey Water Holding Tank (gal)	58	58	58	58
Black Water Holding Tank (gal)	42	42	42	42
Appliance Propane Tank (gal) (WC) <sup>7</sup>	25	25	25	25
Water Heater Tank (gal)	10	10	10	10



Go to [FleetwoodRV.com](http://FleetwoodRV.com) and build your own Boudier Classic!

## Boudier Classic Top Features

- Full Body Paint (Standard)
- Home Theater Surround Sound System
- LED TVs
- Flexsteel® Furniture
- Composite Tile Flooring
- Solid-Surface Galley Countertop
- Fiberglass Rear Cap
- One-Piece Panoramic Windshield
- Hardwood Cabinet Doors w/Hidden Hinges
- Bus-Style Side-Swing Luggage Doors
- King Bed (Optional)
- Soft-Touch Vinyl Ceiling



Caramel Kiss



Winter Haven

Both inside and out, there is a wide selection of colors, styles and finishes. From the moment you lay your eyes on an Boudier Classic, the high-style graphics and décor collection welcome you with gracious beauty and contemporary design. We've paid attention to every detail. So wherever you are, you'll feel right at home.

## CARAMEL KISS

SOFA	ACCENT	BEDSPREAD	COUNTERTOP	FLOORING	CARPET

## WINTERHAVEN

SOFA	ACCENT	BEDSPREAD	COUNTERTOP	FLOORING	CARPET

## CABINERY

### CINNABAR



### SPICE



## INTERIOR THROUGHOUT

- Dual 11.0/13.5 Btu/h Ducted Air Conditioners
- Soft-touch Padded Vinyl Ceiling
- Halogen Lighting
- 34,000 Btu/h Furnace
- 30,000/20,000 Btu/h (36R/36H)
- 6-Gallon Quick-Recovery Water Heater w/Direct Spark Ignition
- Battery Disconnect System
- Automotive A/C Heater Combo
- PEX Plumbing System
- Deluxe Roller Bearing, Full-Extension Drawer Guides
- Wood Cabinet Doors w/Raised Panels at Upper Doors
- Hidden Cabinet Door Hinges
- On-Demand Water Pump w/Filter
- Systems Monitor Panel
- 120V/12V AC/DC Converter
- Central Electrical Panel w/Charger
- Energy Management System
- Water Heater Bypass
- Composite Tile Flooring

### Optional

- Bedroom LED TV
- Dual Flat-Panel Monitors (34B, 36H)
- Sofa L-Transformer (34M)
- King Bed (34B, 34M, 36H, 36R)
- Dual Wardrobes (34B)
- CSA Package (Canadian Specs)\*\*

## DRIVER CONVENIENCE

- 3-Point Seatbelts at Driver & Front Passenger Seats
- AM/FM Radio w/CD & Electronic Tuning
- Auxiliary Start Circuit
- Cruise Control
- Flexsteel® Driver Captain's Chair w/Reclining Back/Slide Controls
- Flexsteel Passenger Chair w/Reclining Back/Slide Controls & Footrest
- Intermittent Wiper Control
- Radio Switch Main/Auxiliary Power
- Tilt Steering Wheel
- 12V Power Jack

## GALLEY

- 9 cu. ft. Dometic® Refrigerator
- 3-Burner Range w/17" Oven
- Sharp® Convection Microwave
- Fan-Tastic® Power Roof Vent
- Large Stainless-Steel Double Sink
- High-Rise Faucet
- Wood Drawer Construction
- Whole-Coach Water Filtration System
- Dream Dinette Table
- Solid Surface Galley Top w/Sink Covers



BOUDIER CLASSIC 36H SHOWN IN WINTER HAVEN DÉCOR WITH SPICE WOOD CABINERY

## LIVING ROOM

- 32" LED HDTV Mid-Coach Location
- Night Pleated Shades
- Video Control Box
- DVD Home Theater Sound System
- Composite Tile Floor Covering in Lavy/Galley/Living Room
- Sofa Bed w/Air Mattress

## BEDROOM

- Exclusive Dream Easy Mattress
- Wardrobe w/Mirrored Doors
- Rear TV Receptacle
- Adjustable Reading Lights

## BATHROOM

- Porcelain Marine Toilet
- Molded ABS Shower w/Surround
- Power Bath Vent
- Skylight in Shower
- Glass Shower Door
- Medicine Cabinet w/Adjustable Shelves
- Vanity Lights
- Toilet Tank San-T-Flush™ System

## SAFETY/CONVENIENCE (INTERIOR)

- 10 ABC Fire Extinguisher
- Carbon Monoxide Detector/Alarm
- Propane Detector/Alarm
- Smoke Detector/Alarm
- Interior Entry Grab Handle
- Multiple Seatbelt Locations



## EXTERIOR THROUGHOUT

- Full Body Paint
- 50 Amp Service
- 5.5 kW EFI Onan® MicroQuiet Generator
- Amber Porch Light
- Awning Rail/Drip Molding (Both Sides)
- Exterior Wash Unit
- Power/Heated Rear-View Mirrors
- Full Basement Configuration
- Pass-Through Basement Storage w/Side-Swing Doors for Easy Access
- Power Awning
- TV Antenna w/Signal Booster
- ABS Front/Rear Wheel Well Trims
- 4-Point Automatic Levelers
- Dual 6V Deep-Cycle 217 Amp Auxiliary Batteries
- Tinted Dual-Pane Windows

### Optional

- Protective Front Mask
- Additional Fresh Water Storage (34B, 34M)
- Exterior Chrome Package
- Rear Ladder
- Exterior Entertainment Center (34B, 36H, 36R)

## AUTOMOTIVE

- Halogen Headlights w/Polycarbonate Lens
- Rear Fuel Fill
- Trailer Hitch w/7-Pin Electrical Hook-Up†
- 5,000 lb. Towing Capacity†
- 19.5" Stainless-Steel Wheel Simulators
- New Wiper System w/Larger Swept Area

## SAFETY/CONVENIENCE (EXTERIOR)

- Entry Door w/Screen Door & Deadbolt Lock
- Dual-Battery Charge Control
- High-Mounted Taillights
- Exterior Lighted Entry Assist Handle
- One-Piece Swing-Down Engine Access Door
- Park Cable Receptacle
- Patio Receptacle
- Power Entry Step
- Automotive Safety Glass
- Daytime Running Lights
- Hydraulic 4-Wheel Disk Brakes w/4-Wheel ABS

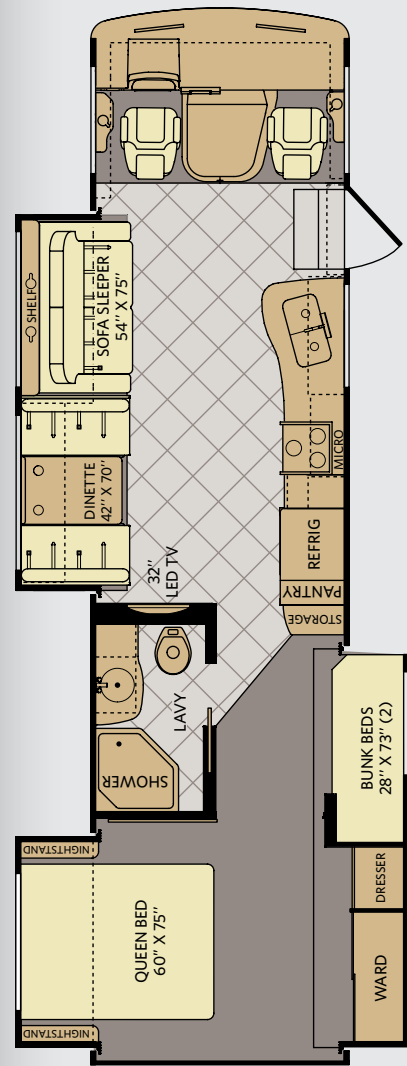
## STORAGE

- Large Lighted Roto- Molded Polyethylene, Side Swing, Insulated Aluminum Luggage Doors w/ Single Paddle Latch & Corrosion Resistant Steel Hinges
- Continuous One-Piece Compartment Bulb Seal

## BODY STRUCTURE

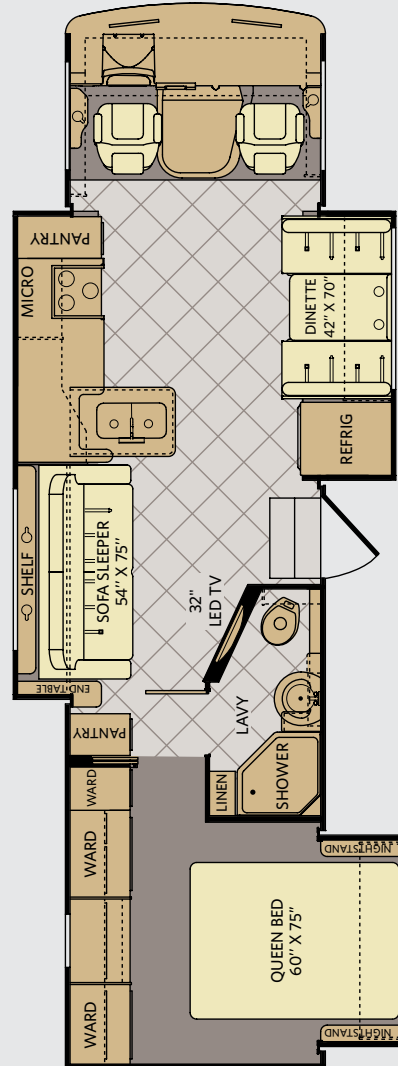
- Aluminum Interlocking Floor/Wall/Ceiling Framing
- Vacu-Bond® Floor and Ceiling
- Vacu-Bond® Walls w/Smooth High-Gloss Exterior Fiberglass
- Fiberglass Front/Rear Cap
- Windshield Bonded to Fiberglass Front Cap
- Radius Roof w/Ducted A/C
- Power Platform® Construction (Fleetwood Exclusive)





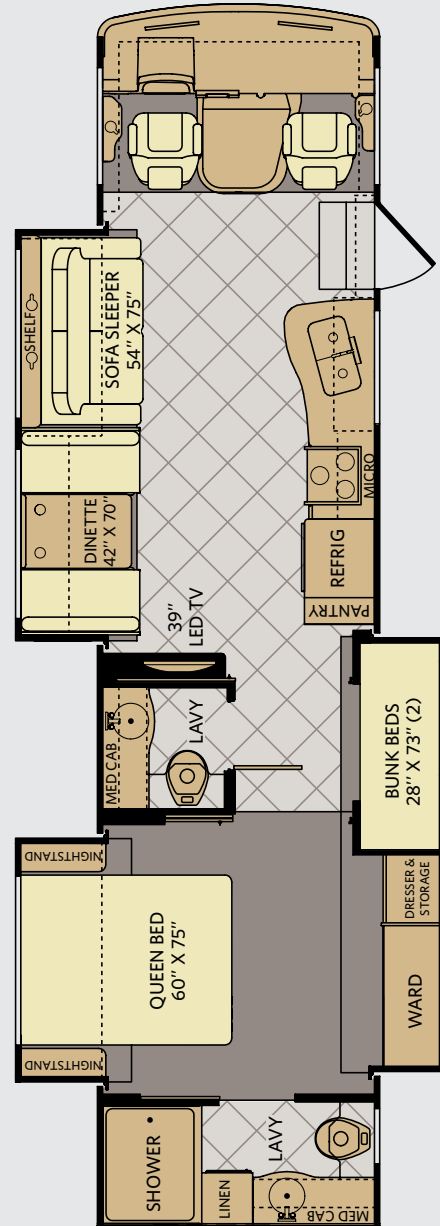
**34B**

AVAILABLE OPTIONS : 084, 093, 157, 852, 883



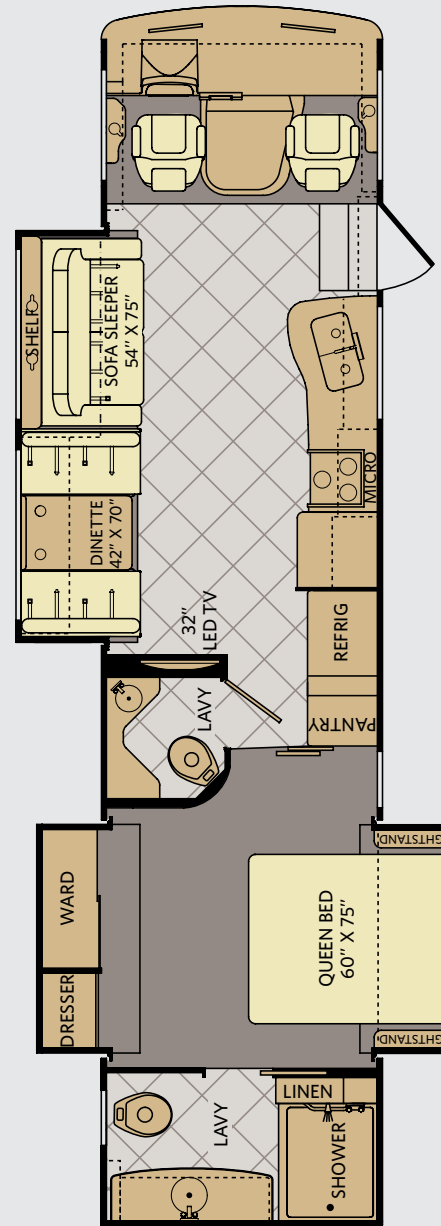
**34M**

AVAILABLE OPTIONS: 084, 191, 852



**36H**

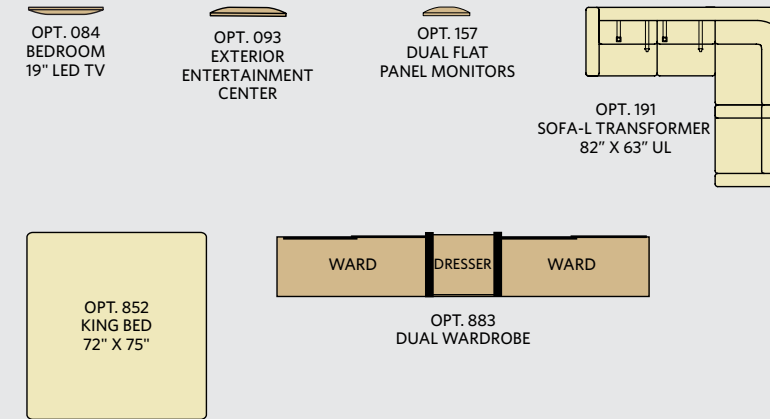
AVAILABLE OPTIONS: 084, 093, 157, 852



**36R**

AVAILABLE OPTIONS: 084, 093, 852

## FLOOR PLAN OPTIONS



### DISCLAIMERS

- GVWR (Gross Vehicle Weight Rating) is the maximum permissible weight of this fully loaded motor home. The GVWR is equal to or greater than the sum of the (UVW) unloaded vehicle weight plus the (OCCC) occupant cargo-carrying capacity.
  - GAWR (Gross Axle Weight Rating) is the maximum permissible loaded weight a specific axle is designed to carry.
  - GCWR (Gross Combined Weight Rating) is the value specified by the motor home manufacturer as the maximum allowable weight of this motor home with its towed vehicle. Towing and braking capacities may be different. Refer to Fleetwood and chassis manufacturer's manuals for complete information.
  - Length measured from front bumper to rear bumper (excludes accessories).
  - Excludes safety equipment and awnings.
  - Motor homes feature a body width over 96" which will restrict your access to certain roads. Before purchasing, you should research any state and/or province road laws which may affect your usage.
  - Tank manufacturer's listed water capacity (WC). Actual propane capacity is 80% of water listing as required by the safety code.
- † The chassis manufacturer recommends the installation of a supplemental brake control system to activate the brakes on the vehicle or trailer you are towing. Hitch receiver ratings expressed are maximum for the hitch receiver installed and may require the purchase of additional equipment that is dependent on the weight of the towed load. Consult with hitch receiver manufacturer for further information.

\* UVW and OCCC are found on the label containing the federal certification tag in each RV.

## CHASSIS

MODELS	34B	34M	36H	36R
Wheelbase (inches)	228"	228"	228"	228"
GVWR (lbs) <sup>1</sup>	22,000	22,000	22,000	22,000
Front GAWR (lbs) <sup>2</sup>	8,000	8,000	8,000	8,000
Rear GAWR (lbs) <sup>2</sup>	15,000	15,000	15,000	15,000
GCWR (lbs) <sup>3</sup>	26,000	26,000	26,000	26,000
Hitch Rating Weight (lbs) <sup>†</sup>	5,000	5,000	5,000	5,000
Tongue Weight (lbs) <sup>*</sup>	500	500	500	500
Fuel Capacity (gal)	80	80	80	80

### POWER PLATFORM® CHASSIS

**Model:** Ford®  
**Engine:** 6.8L Triton V10  
**Transmission:** Ford,® 5-Speed, Automatic w/Overdrive

**Alternator:** 175 Amp  
**Torque:** 457 lb-ft @ 3,250 RPM  
**Horsepower:** 362HP

## DIMENSIONS & CAPACITIES

MODELS	34B	34M	36H	36R
Overall Length (inches) <sup>4</sup>	35' 7"	35' 7"	37' 7"	37' 7"
Overall Height (with A/C)	12'	12'	12'	12'
Overall Width (maximum) <sup>5, 6</sup>	102"	102"	102"	102"
Interior Height (maximum)	79"	79"	79"	79"
Interior Width (maximum)	96"	96"	96"	96"
Patio Awning Width	14'	20'	12'	15'
Interior Storage (cu. ft.)	150	144	134	169
Exterior Storage (cu. ft.)	167	167	180	180
Fresh Water Holding Tank (gal)	50	50	85	85
Grey Water Holding Tank (gal)	40	40	40	40
Black Water Holding Tank (gal)	30	30	30	30
Appliance Propane Tank (gal) (WC) <sup>7</sup>	20	20	20	20
Water Heater Tank (gal)	6	6	6	6



ALLIED RECREATION GROUP



## WHY FLEETWOOD?



### Quality

There's no cutting corners. Skilled craftsmen build every Fleetwood RV for maximum durability and longevity.



### Trust

More people trust Fleetwood RV. After all, we've spent over 60 years perfecting RVs, earning the loyalty of generations of RVers.



### Passion

We're truly passionate about the RV lifestyle. Fleetwood RV was founded by RV enthusiasts, and that tradition continues today.



### Safety

You've got precious cargo. So we've engineered dozens of innovative safety features into our motor homes to give you more peace of mind.



### Service

Help is nearby with 24/7 emergency roadside assistance through **Coach-Net**.<sup>SM</sup> And when you need an upgrade or repair, you'll find Fleetwood RV dealers all across North America ready to assist you.



### Warranty

Exclusive RV ownercare warranty.  
See your Fleetwood RV dealer for details.

\*\*All 2015 Fleetwood RV motorhomes include a 1-year emergency roadside assistance membership. For complete info, see your Fleetwood RV dealer.



Visit [FleetwoodRV.com](http://FleetwoodRV.com) or find FleetwoodRV tablet apps in the App Store and Google Play.

### RV OWNERCARE\*\*

Limited one-year/15,000-mile coach warranty and three-year/45,000-mile structural warranty, whichever occurs first, and it is fully transferable for the first 12 months. RV OWNERCARE is one of the RV industry's most comprehensive programs and includes systems, appliances, components and construction, with no deductible and no service charge. RV OWNERCARE coverage is provided by a company that will be around in the future to service your needs. See your nearest Fleetwood RV dealer for a full explanation of benefits and restrictions.

### CONTACT US

To locate a dealer near you, visit our website at [www.fleetwoodrv.com](http://www.fleetwoodrv.com) or call 1-800-322-8216. We can also be contacted at Fleetwood RV Customer Relations, P.O. Box 1007, Decatur, IN 46733.

### FLEETWOOD RV MOTOR HOME CLUBS

As a Fleetwood RV owner, you're invited to become a member of several Fleetwood RV motor home clubs. Becoming a club member is the perfect way to meet other Fleetwood owners who love to travel across America and share in the RV lifestyle. Visit our website at [www.fleetwoodrv.com/owners\\_clubs](http://www.fleetwoodrv.com/owners_clubs) to learn more and join the fun.

**IMPORTANT—PLEASE READ:** Product information, photography and illustrations included in this publication were as accurate as possible at the time of printing. For further product information and changes, please visit our website at [www.fleetwoodrv.com](http://www.fleetwoodrv.com) or contact your local Fleetwood RV dealer. Prices, materials, design and specifications are subject to change without notice. All weights, fuel, liquid capacities and dimensions are approximate. Fleetwood RV has designed its recreational vehicles to provide a variety of uses for its customers. Each vehicle features optimal seating, sleeping, storage and fluid capacities. The user is responsible for selecting the proper combination of loads (i.e., occupants, equipment, fluids, cargo, etc.) to ensure that the vehicle's capacities are not exceeded.

### YOUR LOCAL FLEETWOOD RV DEALER IS: