


VEGAS RUV

**MADE TO FIT**  
YOUR NEEDS



**VEGAS RUV**

 **BY THOR MOTOR COACH**

## WHEN WE SAY *MADE TO FIT*, WE MEAN IT.

With so many unique models available, Thor Motor Coach motorhomes are priced to fit anyone's budget – from families buying their first motorhome, to full-timers looking for a roaming “dream home”. No matter how you choose to spend your time or your money, there's a TMC motorhome that fits your needs. Welcome to the Vegas RUV, the motorhome that is ***Made to Fit*** your needs.



25.1 | CORK | OLYMPIC CHERRY



24.2 | FUDGE SWIRL | SYDNEY MAPLE



24.2 | FUDGE SWIRL | SYDNEY MAPLE



25.1 | CORK | OLYMPIC CHERRY







24.2 | FUDGE SWIRL | SYDNEY MAPLE

## BEAUTY INSIDE & OUT



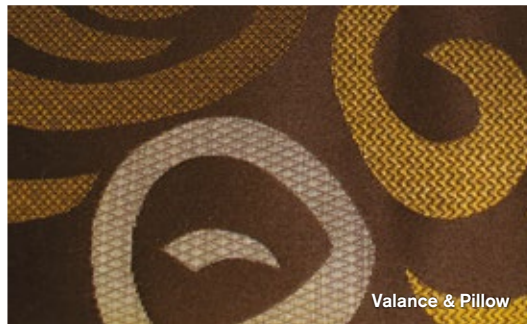
CORK



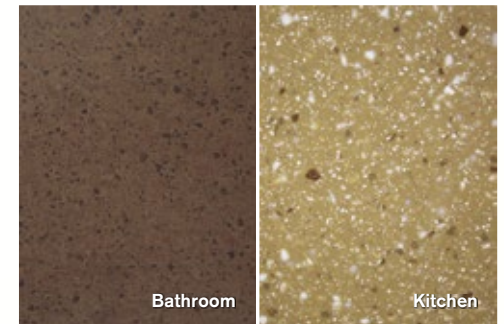
FLOORING



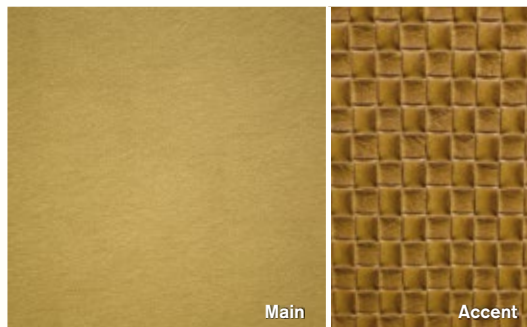
25.1 | CORK | OLYMPIC CHERRY



FUDGE SWIRL



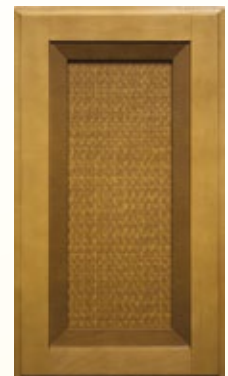
COUNTERTOPS



LEATHERETTE FURNITURE



OLYMPIC CHERRY



SYDNEY MAPLE



MARQUEE HD-MAX™ 



TROPICANA HD-MAX™ 



**A | TRITON® 6.8L V10 ENGINE**

The 6.8L V10 engine has a proven track record of durability and low-hassle maintenance. Extremely smooth running with a commanding 305-horsepower and 420 lb.-ft. of torque.

**B | POWER 4-WHEEL DISC ANTI-LOCK BRAKES**

Maintains brake balance in heavy use and varying road conditions. Reduces wheel lock up and helps maintain superior steering control.

**C | TWIN I-BEAM FRONT SUSPENSION**

Provides a comfortable ride by allowing the front wheels to work independently of each other, reducing driver stress.

**D | TORQSHIFT® 5-SPEED AUTOMATIC TRANSMISSION**

Provides crisp, firm and quick shifting without sacrificing driver comfort.

**E | LIMITED WARRANTY**

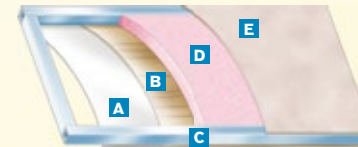
The Ford® Motorhome Chassis has a Bumper-to-Bumper Limited Warranty for 3 years or 36,000 miles and a Powertrain Limited Warranty for 5 years or 60,000 miles, whichever comes first.

Taking the extra time to ensure the best possible structure is exactly what you deserve, and this is why Thor Motor Coach insists on vacuum-bond laminating not only the sidewalls of the motorhome, but also the floor and roof. Vacuum-bonding is the optimum manufacturing process to ensure multi-layer integrity.



**ROOF**

- A** One-piece exterior TPO membrane
- B** Luan panels
- C** Aluminum structure with bowed framing
- D** Block foam insulation
- E** Interior panel with hard vinyl covering



**SIDEWALLS**

- A** High-gloss or gel-coat fiberglass
- B** Luan panels
- C** Aluminum structure with framing at all openings
- D** Block foam insulation
- E** Interior panel with designer wall covering



**FLOOR**

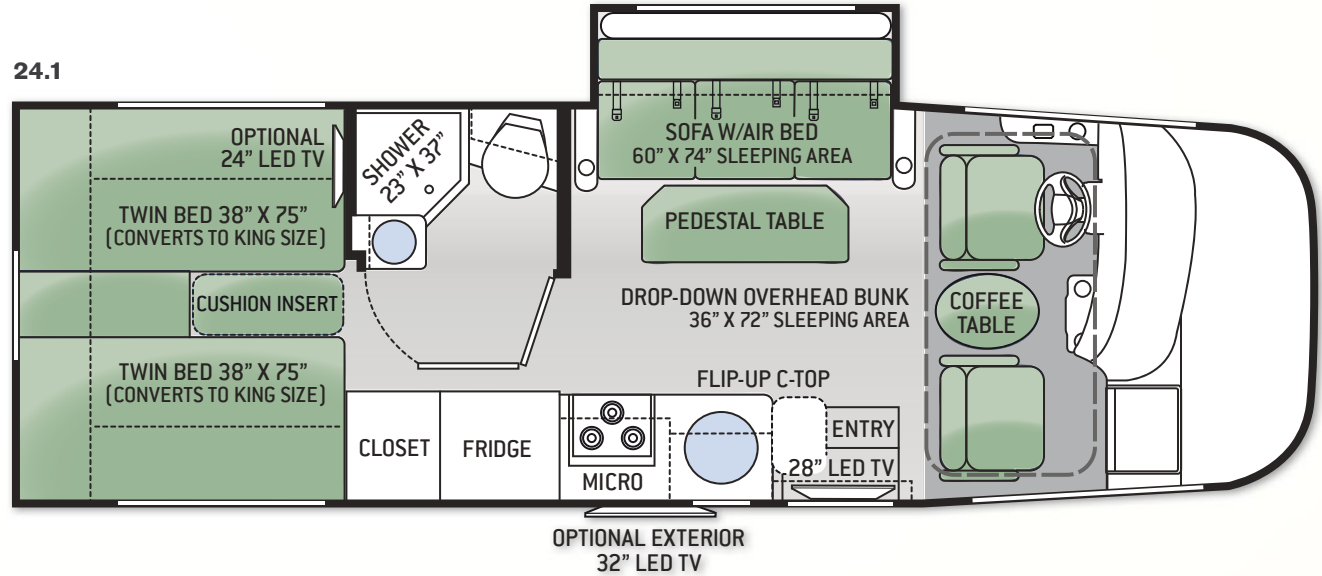
- A** Residential vinyl flooring or carpet
- B** OSB structure wood base
- C** Structural steel framing
- D** Block foam insulation
- E** Luan with woven plastic exterior finish

# FLOOR PLANS

## 24.1

Chassis	Ford
Gross Vehicle (GVWR)	12,500
Gross Combined (GCWR)	18,500
Wheel Base	188"
Exterior Length (w/o ladder)	25'-6"
Exterior Height (w/AC)	11'-3"
Exterior Width (w/o mirrors)	94"
Interior Height	82"
Awning Size	16'-5"
Fuel (gal)	55
LPG (lbs)	40.9
Fresh/Waste/Gray Water (gal)	42 / 30 / 40
Water Heater (gal)	6
Furnace (BTUs)	30,000
Exterior Storage Capacity (cu. ft.)	63.5

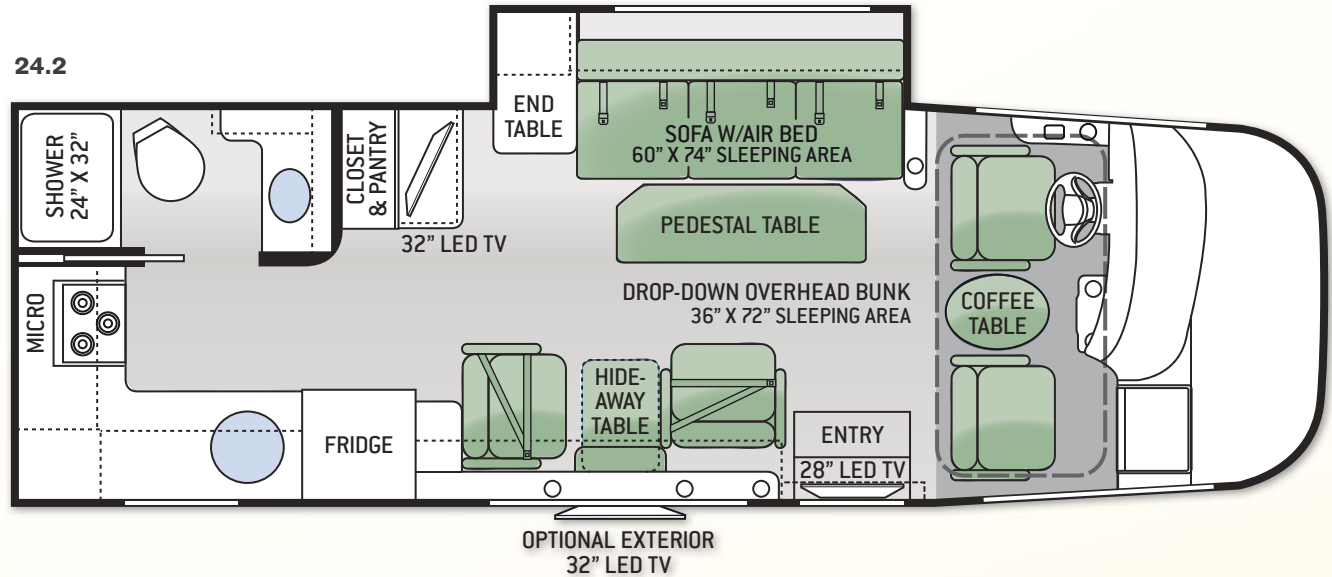
## 24.1



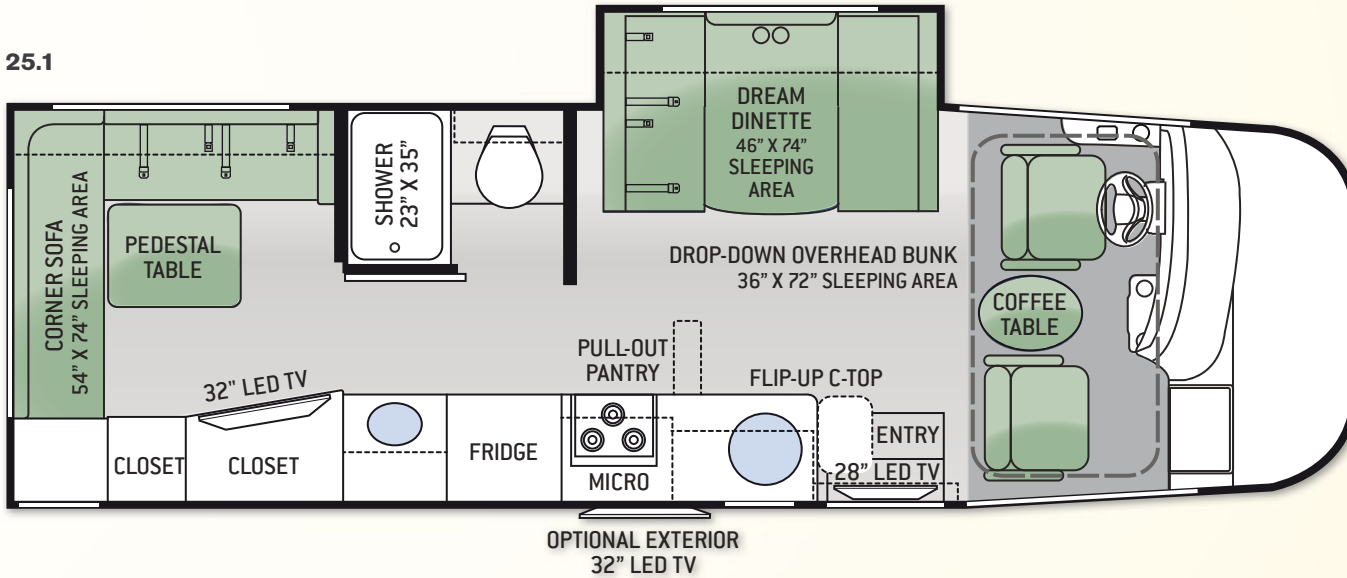
## 24.2

Chassis	Ford
Gross Vehicle (GVWR)	12,500
Gross Combined (GCWR)	18,500
Wheel Base	188"
Exterior Length (w/o ladder)	25'-11"
Exterior Height (w/AC)	11'-3"
Exterior Width (w/o mirrors)	94"
Interior Height	82"
Awning Size	17'-5"
Fuel (gal)	55
LPG (lbs)	40.9
Fresh/Waste/Gray Water (gal)	39 / 30 / 41
Water Heater (gal)	6
Furnace (BTUs)	30,000
Exterior Storage Capacity (cu. ft.)	48.0

## 24.2



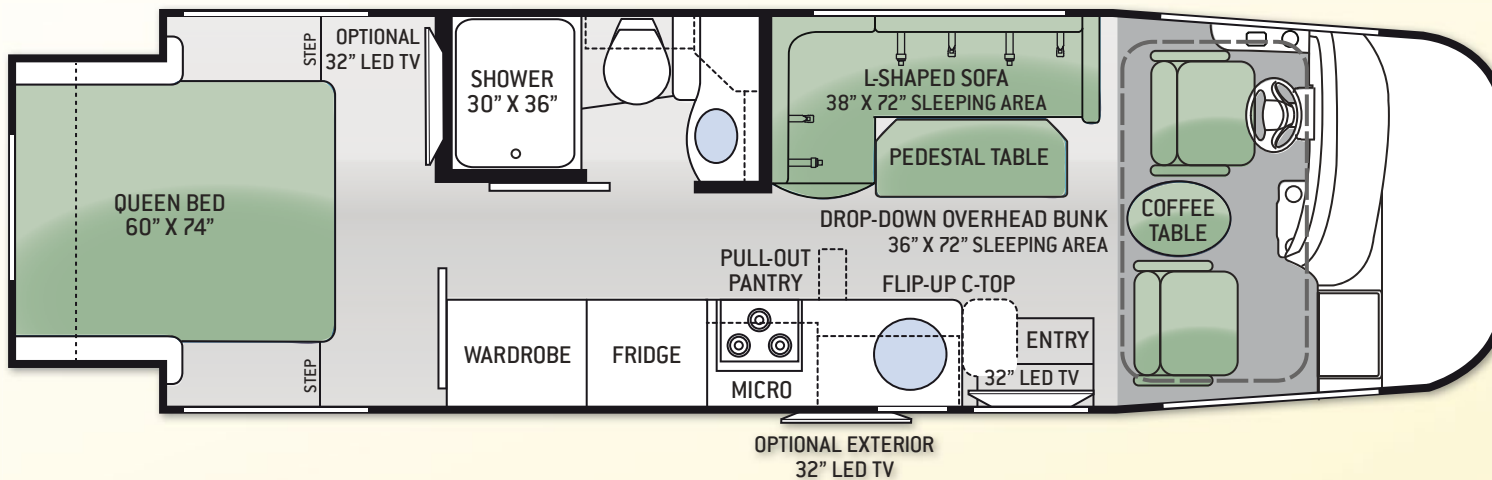
**25.1**



**25.1**

Chassis	Ford
Gross Vehicle (GVWR)	12,500
Gross Combined (GCWR)	18,500
Wheel Base	188"
Exterior Length (w/o ladder)	26'-6"
Exterior Height (w/AC)	11'-3"
Exterior Width (w/o mirrors)	94"
Interior Height	82"
Awning Size	18'
Fuel (gal)	55
LPG (lbs)	40.9
Fresh/Waste/Gray Water (gal)	42 / 30 / 40
Water Heater (gal)	6
Furnace (BTUs)	30,000
Exterior Storage Capacity (cu. ft.)	48.0

**25.2**



**25.2**

Chassis	Ford
Gross Vehicle (GVWR)	12,500
Gross Combined (GCWR)	18,500
Wheel Base	194"
Exterior Length (w/o ladder)	26'-6"
Exterior Height (w/AC)	11'-3"
Exterior Width (w/o mirrors)	94"
Interior Height	82"
Awning Size	18'
Fuel (gal)	55
LPG (lbs)	40.9
Fresh/Waste/Gray Water (gal)	39 / 30 / 40
Water Heater (gal)	6
Furnace (BTUs)	30,000
Exterior Storage Capacity (cu. ft.)	47.0

# STANDARDS & OPTIONS

## CONSTRUCTION & EXTERIOR

- Ford® E-350 Chassis – 6.8L Triton® V10 Engine with 5-Speed TorqShift® Automatic Transmission with Overdrive
- One-Piece Fiberglass Front Cap
- One-Piece Windshield
- HD-MAX™ Exterior with Graphics Package
- MEGA Storage™ Compartment
- Rotocast Storage Compartments
- Flush Mount Radius Storage Doors
- Power Patio Awning with Integrated LED Lighting
- Slideout Room Awning
- Roof Ladder (N/A 25.2)
- Patio Light
- Rubber Tread Entry Steps
- Outside Shower
- Frameless Windows

## AUTOMOTIVE & COCKPIT

- Touchscreen Dash Radio with CD Player, Back-Up Monitor & Bluetooth®
- Heated/Remote Exterior Mirrors with Integrated Side View Cameras
- Reclining/Swivel Leatherette Captain's Chairs
- Stow-Away Coffee Table Between Captain's Chairs
- Fog Lights
- Windshield Privacy Shade
- 16" Tires with Stainless Steel Wheels
- Valve Stem Extenders on Rear Tires
- 8,000-lb. Trailer Hitch\*
- Dash Workstation with 110-volt & 12-volt Outlets

## INTERIOR

- Residential Vinyl Flooring Throughout (Except Cockpit Area)
- 82" Interior Ceiling Height

- LED Ceiling Lights
- Metal Entry Grab Handle
- Flat Panel Cabinetry with Rattan Inlay & Nickel Finish Hardware
- Leatherette Sofa with Air Bed & Removable Pedestal Table (24.1 & 24.2)
- Leatherette L-Shaped Sofa with Removable Pedestal Table (25.2)
- Dual Leatherette Captain's Chairs with Hide-Away Table in between & Integrated Seat Belts in Living Area (24.2)
- Dream Dinette™ Booth (25.1)
- Power Drop-Down Hide-Away Overhead Bunk
- Window Privacy Shades

## INTERIOR OPTION

- 12-volt Attic Fan in Living Area

## KITCHEN

- 6 cu. ft. Double Door Refrigerator
- 3-Burner Gas Cooktop
- Convection Microwave Oven
- Pressed Countertops
- Oversized Bowl Sink with Single Handle Gooseneck Faucet
- Flip-Up Countertop Extension (24.1, 25.1 & 25.2)
- Full Extension Ball-Bearing Drawer Guides

## KITCHEN OPTION

- 3-Burner Gas Cooktop with Oven & Standard Microwave Oven

## BEDROOM & BATHROOM

- Two (2) Twin Beds with Upholstered Covers – Converts to King Size Bed (24.1)
- Denver Mattress™ Queen Size Bed (25.2)
- Designer Headboard (24.1)
- Leatherette Corner Sofa with Removable Pedestal Table – Converts to 54x74-inch Sleeping Area (25.1)
- Room Expanding Doors (24.1)

- Foot Flush Porcelain Toilet
- Power Vent in Bathroom
- Shower with Curtain

## BEDROOM & BATHROOM OPTION

- 12-volt Attic Fan in Bedroom

## ENTERTAINMENT

- 32" LED TV in Living Area (25.2)
- 28" LED TV in Living Area (24.1, 24.2 & 25.1)
- Power Charging Center for Electronics
- TV Antenna & Booster
- Cable TV Ready

## ENTERTAINMENT OPTIONS

- 32" LED TV with DVD Player in Bedroom (OPT 25.2. STD 25.1)
- 24" LED TV with DVD Player in Bedroom (24.1)
- Exterior 32" LED TV

## ELECTRICAL & PLUMBING

- Cummins Onan® RV QG 4000 Gas Generator
- 30-amp Service with Detachable Shoreline Power Cord
- Automatic Shoreline-to-Generator Transfer Switch
- 13,500 BTU Roof Air Conditioner
- Emergency Start Switch
- Battery Disconnect Switch
- 6-gallon DSI Gas/Electric Water Heater
- Water Heater Bypass System
- Systems Control Center

## ELECTRICAL & PLUMBING OPTIONS

- 15,000 BTU Roof Air Conditioner
- Second Auxiliary House Battery
- Holding Tanks with Heat Pads

\*INCLUDED ON UNITS BUILT AFTER 10/1/14

Thor Motor Coach is the industry leader in innovative design and builds a variety of unique styles, sizes and floor plans that feel custom-made – at a truly competitive price.

**IMPORTANT - PLEASE READ:** This brochure reflects product design, fabrication, material, components and specifications at the date of printing, which date is disclosed on the last page. PLEASE VISIT US ONLINE AT THORMOTORCOACH.COM OR CONSULT WITH YOUR SELLING DEALERSHIP FOR THE LATEST IN STANDARDS, OPTIONS, SPECIFICATION AND TECHNICAL INFORMATION. Photographs in the brochure may depict optional equipment or may only be available in certain floor plans. Components, appliances and the chassis may have been manufactured in a calendar year before the vehicle's designated model year. All capacities are approximate. The actual length of the vehicle may differ from that indicated in the brochure due to variances in the manufacturing processes and/or installed components. All dry weights are based on standard model features and do not include optional features or equipment. Component part and appliance manufacturers issue limited warranties covering portions of the vehicle not covered under the limited warranty we issue.

Copyright Thor Motor Coach, Inc. © 12/15/14

YOUR LOCAL THOR MOTOR COACH DEALER



Made to fit.

P.O. Box 1486, Elkhart, IN 46515  
Sales Department: 800.860.5658  
Customer Service: 877.855.2867

Vegas-Motorhomes.com

