

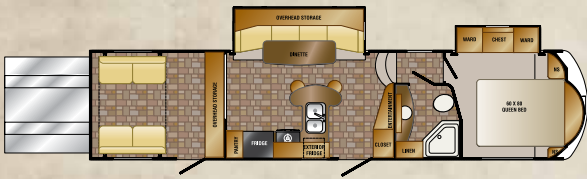
ELEVATION



CROSSROADS[®]
RECREATIONAL VEHICLES

ELEVATION MODELS

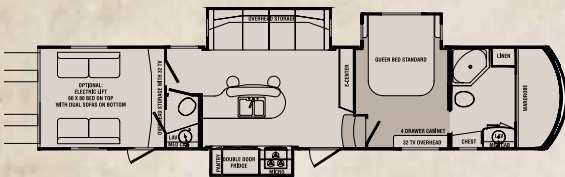
Elevation models weigh up to 20% less than every other Toy-Hauler in their class!



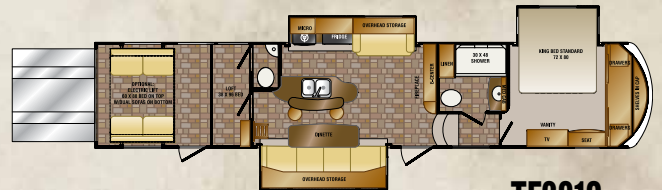
TF3410



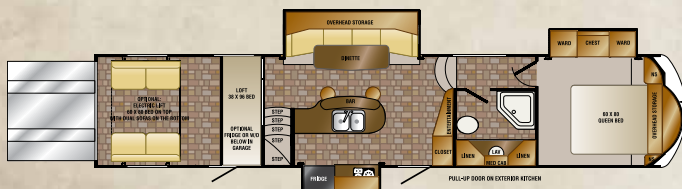
TF3412



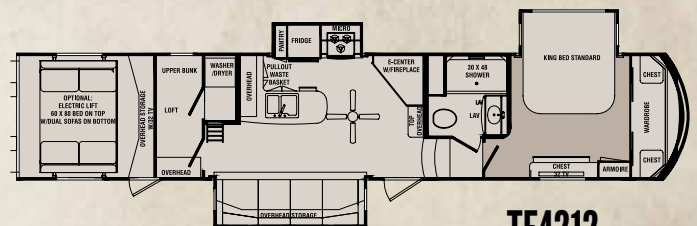
TF3810



TF3812



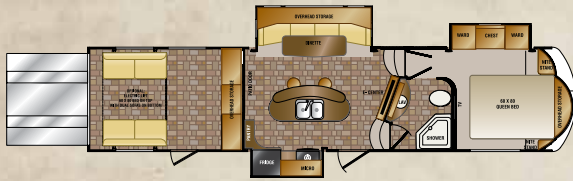
TF4012



TF4212

| ELEVATION | TF3410 | TF3412 | TF3612 | TF3616 | TF3810 |
|-----------------|--------------|--------|--------------|--------------|--------------|
| SHIPPING WEIGHT | 10681 | TBD | 10910 | 11933 | 14674 |
| GVWR | 15500 | TBD | 15500 | 18000 | 18000 |
| CARRYING CAP | 4819 | TBD | 4590 | 6067 | 3326 |
| HITCH WEIGHT | 2213 | TBD | 2400 | 2619 | 3296 |
| AXLE WEIGHT | 8468 | TBD | 8510 | 9314 | 11378 |
| EXT LENGTH | 36' 11" | TBD | 37' 11" | 41' 11" | 42' 5" |
| EXT HEIGHT W/AC | 13' 2" | TBD | 13' 2" | 13' 2" | 13' 2" |
| FRESH WATER | 112 | TBD | 112 | 112 | 104 |
| BLACK WATER | 40 | TBD | 40 | 40 | 70 |
| GRAY | 80 | TBD | 80 | 80 | 70 |
| TIRE SIZE | ST235/80R16E | TBD | ST235/80R16E | ST235/80R16E | ST235/80R16E |

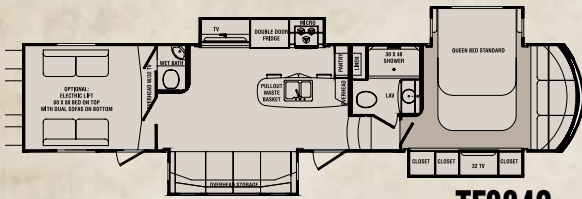
FLOOR PLANS



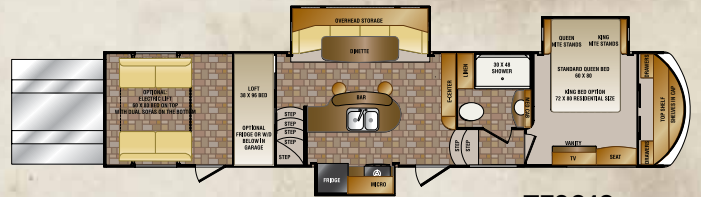
TF3612



TF3616



TF3840



TF3912

| TF3812 | TF3840 | TF3912 | TF4012 | TF4212 |
|--------------|--------------|--------------|--------------|--------------|
| 12450 | 14848 | 11995 | 12339 | 15018 |
| 18000 | 18000 | 18000 | 18000 | 18000 |
| 5550 | 3152 | 6005 | 5661 | 2982 |
| 2908 | 3770 | 2839 | 2946 | 3410 |
| 9542 | 11078 | 9156 | 9393 | 11608 |
| 42' 11" | 42' 4" | 41' 3" | 42' 4" | 42' 10" |
| 13' 2 " | 13' 2 " | 13' 2 " | 13' 2 " | 13' 2 " |
| 112 | 104 | 112 | 112 | 104 |
| 40 | 65 | 40 | 40 | 45 |
| 80 | 65 | 80 | 80 | 90 |
| ST235/80R16E | ST235/80R16E | ST235/80R16E | ST235/80R16E | ST235/80R16E |

STANDARDS & OPTIONS

STANDARDS

INTERIOR

- 8' Ceiling in main living area
- Solid surface kitchen countertops
- Max fan w/ rain sensor in main living room
- Luxurious styled residential furniture
- Stainless steel ball bearing drawer guides
- Frameless tinted safety glass windows
- Porcelain foot flush toilet
- Quilted pillowtop bedroom mattress
- LED TV in main living area
- Home theater surround soundbar
- Blu-Ray DVD player w/ internet apps
- Large stainless steel residential kitchen sink
- High rise kitchen faucet w/ pull-down sprayer
- Hidden hinged railed panel cabinet doors
- Roller night shades
- 15,000 BTU ducted A/C
- 40,000 BTU furnace
- Upgraded interior LED lighting
- LP & carbon monoxide detectors, smoke alarms
- Residential microwave
- Crown molding throughout
- USB charging station

EXTERIOR

- Front hydraulic landing gear
- Rear electric stabilizer jacks
- Power awning w/LED lighting
- Quad-Step entry steps at both doors
- Trail Aire "Rota-Flex" hitch
- 30" entry door w/window
- Convenience docking station
- Roof mounted satellite prep
- LED docking hitch light
- Fold away grab handles at both doors
- (2) 40# LP bottles
- Power exhaust fans in bedroom & bathroom
- Auxiliary 30 gal fuel tank w/ pump
- 16" custom aluminum wheels
- "E" rated radial tires
- Spare tire with carrier
- 50 amp service power cord
- Fold flat roof access ladder
- (2) exterior scare lights
- Exterior TV & satellite hook-ups

CONSTRUCTION

- 3/8" plywood roof decking
- 5/8" plywood tongue & groove floor decking
- 12 gal gas/electric water heater
- Water heater by-pass valve
- Black tank flush
- Foil insulation in roof, floor, cap & slides

- Heated and enclosed underbelly
- Wired & prepped for 2nd A/C
- 110 gal fresh water tank
- 7000# rated axles
- 90 amp power converter

PEAK PERFORMANCE STANDARDS

- 5.5 Onan generator w/30 gal fuel tank
- Rear electric queen bed lift w/sofa's
- 2nd Power awning w/LED light strip
- 32" LED TV in bedroom
- Garage pull down screen
- Central vacuum system

OPTIONS

- "Level UP" 6-point hydraulic leveling system
- Patio deck w/power awning
- 12 cu. ft. 4-door refrigerator
- 12 cu. ft. 4-door refrigerator w/ ice maker
- 2nd 15,000 BTU A/C
- 32" LED TV in garage
- Trail Air "Tri-Glide" hitch

POLAR PACKAGE

- Dual pane windows
- 12V heat pads
- Heat pump

DISCLAIMER: Product information is as accurate as possible at the date of publication of this brochure. All features, floorplans, and specifications in this brochure are subject to change without notice. Please also consult CrossRoads RV's website at www.crossroadsv.com for more current product information and specifications. Tow Vehicle Disclaimer. CAUTION: Owners of CrossRoads recreational vehicles are solely responsible for the selection and proper use of tow vehicles. All customers should consult with a motor vehicle manufacturer or their dealer concerning the purchase and use of suitable tow vehicles for CrossRoads RV products. CrossRoads RV disclaims any liability or damages suffered as a result of the selection, operation, use or misuse of tow vehicle. CROSSROADS RV'S LIMITED WARRANTY DOES NOT COVER DAMAGE TO THE RECREATIONAL VEHICLE OR TOW VEHICLE AS A RESULT OF THE SELECTION, OPERATION, USE OR MISUSE OF THE TOW VEHICLE.

ELEVATE YOUR GAME!

Aluminum frame construction on the sidewalls, roof and floor is 20% less weight than comparable wood/aluminum hauler. What does that mean for you? Elevation is 3/4 Ton towable even with a loaded garage!



LIVE A LITTLE!

Elevation Interiors are a showcase for luxury RV Living. They're designed to flow seamlessly, quietly and beautifully together from living room, kitchen and bedroom. It all comes together in a Elevation vehicle.





MADE IN THE USA

PROUD TO BE MADE IN THE UNITED STATES OF AMERICA! ALL CROSSROADS PRODUCTS, INCLUDING ELEVATION MODELS, ARE HAND-CRAFTED BY A SEASONED MIDWEST WORKFORCE DEDICATED TO QUALITY AND INTEGRITY. THE BEST ONLY GETS BETTER WHEN YOU CONSIDER THE METICULOUS ATTENTION TO DETAIL, QUALITY OF COMPONENTS AND VALUE AN AMERICAN MADE PRODUCT BRINGS. YOU CAN CHECK OUT OUR FULL LINE OF PRODUCTS BY VISITING CROSSROADSRV.COM TODAY.

MORE >>> Go see more details on construction, features & benefits at: crossroadsrv.com

CROSSROADS[®]
RECREATIONAL VEHICLES

YOUR LOCAL CROSSROADS DEALER:

1140 W. LAKE STREET 🌿 TOPEKA, IN 46571 🌿 PH 260 593-3850 🌿 FX 260 593-2088