



SENECA

2014 MOTORHOMES BY JAYCO

SO MUCH POWER, IT'LL FLOOR YOU.



2014 SENECA | MOTORHOMES BY JAYCO



Read more about our industry-leading **2-YEAR WARRANTY** on the back cover!



SENECA YOUR WAIT FOR THE PERFECT RIDE IS OVER.

Meet the 2014 Jayco Seneca — our most powerful ride yet. Built on a substantial Freightliner M2 chassis, Seneca ups Class C performance with a Cummins ISB 6.7L 340 HP engine, heavy-duty rear air suspension and a 10,000-lb. rated hitch, so you can go anywhere with just about anything. Your seat belt should be the only thing holding you back, and its luxurious interiors should be the only thing persuading you to stay put.



SENECA 36FK | DELTA

The most affordable Class C to be built on a Freightliner chassis

A sloped hood with low-profile dash creates ideal views

CHASSIS



FREIGHTLINER

CUMMINS DIESEL



340 HP ENGINE





High-end kitchen with one-piece, solid-surface countertops

King-sized Denver Mattress with under-bed storage



SENECA 37F8



SENECA 36FK



SENECA 37FS

POWER MEETS LUXURY.

To set the bar in luxury performance, we made both parts equally unmistakable, starting with details that deliver top-level convenience.



IN-DASH DISPLAY

TOUCH SCREEN

A 7" touch-screen display features back-up views, built-in GPS and Premium Sound System (Customer Value Package).



8,000 WATTS

GENERATOR

Don't let anyone tell you their motorhome is a power house unless it's equipped with an 8,000-watt generator.



TANKLESS

WATER HEATER

A tankless water heater with electronic start delivers an unlimited supply of on-demand hot water.

Bunk beds in the 37FS for an 8-person sleeping capacity

Exterior entertainment center with 32" TV and speakers



SENECA 37FS



JAYCO CONSTRUCTION

At Jayco, we've built a reputation for superior construction and craftsmanship. We always use top-quality materials and innovative manufacturing techniques—down to the smallest details. The result? Unmatched resale value and peace of mind in an RV that's built to handle whatever the road throws at it, while outlasting everything but your memories.

EXTERIOR PAINT CHOICES



ESPRESSO PREMIUM PAINT

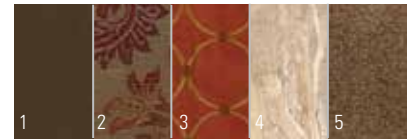


GOLDEN BURGUNDY PREMIUM PAINT

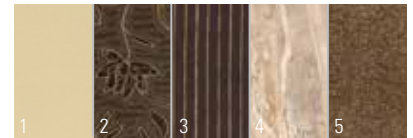


2014 DÉCOR CHOICES

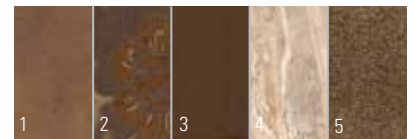
SPICE



DELTA



WATERFORD



- | | |
|------------------------------------|------------|
| 1 Sofa and Driver/ Passenger Seats | 3 Bedroom |
| 2 Accent | 4 Flooring |
| | 5 Carpet |

WALL CONSTRUCTION

- 1 **Vacuum bonded:** Features laminated layers of high-gloss fiberglass, luan, aluminum framing, R-9 bead-foam insulation and vinyl paneling
- 2 **Seamless fiberglass front cap:** Boasts an industry-best 30-month warranty in which Jayco will repair or replace any cap found to be defective 30 months after manufacture date*
- 3 **Frameless windows:** An industry-first standard feature, creates a stunning exterior package

FLOOR CONSTRUCTION

- 4 **Vacuum bonded:** Features laminated layers of Darco underbelly, a welded aluminum frame, R-9 bead-foam insulation and 5/8" Structurwood
- 5 **Welded aluminum frame:** Lighter and more corrosion-resistant than competing steel floors, provides more cargo capacity
- 6 **Aluminum wheel wells:** Not found on most other Class Cs, protects floor from tire blowouts and dissipates heat from brakes for a safe ride

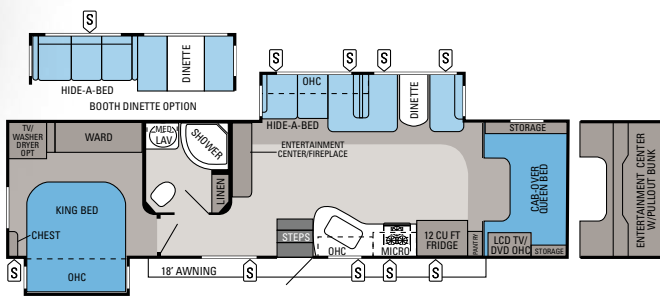
ROOF CONSTRUCTION

- 7 **Vacuum-bonded layers:** Features laminated layers of 5" arched aluminum trusses, moisture-resistant 1/4" plywood decking, R-23 bead-foam insulation and vinyl soft-touch pad
- 8 **Seamless fiberglass roof:** Features one-piece construction for better leak protection; lightweight and UV resistant, fiberglass is superior to competing synthetic rubber roofs that require after-market kits to revitalize faded rubber

PERFORMANCE

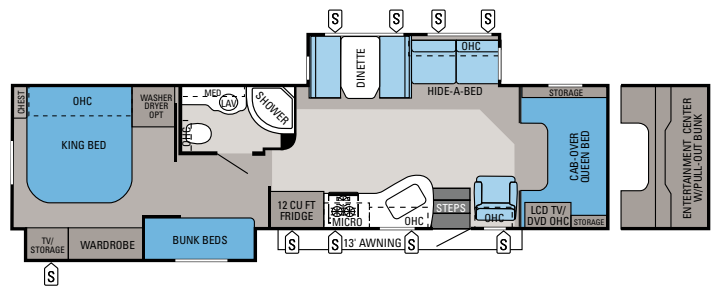
- 9 **Freightliner M2 106 chassis:** Delivers a surprisingly tight 55-degree turning radius
- 10 **Cummins ISB 6.7L 340 HP diesel engine:** Features a 33,000-lb. GCWR with a 10,000-lb. rated hitch, plus gas-strut assisted hood for easy engine access
- 11 **Heavy-duty rear air suspension:** Improves sway control under heavy loads
- 12 **Front-axle stabilizer bar:** Not found on competing Class Cs, reduces sideways tilt when cornering

* See warranty policy for details



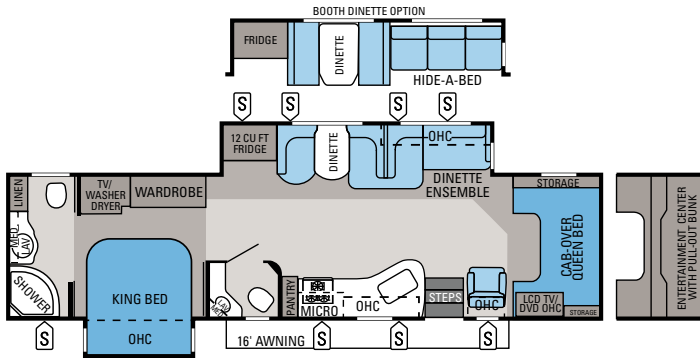
SENECA | 36FK

Exterior Length: 38' 8" Exterior Height: 157" Sleeps: 5-6



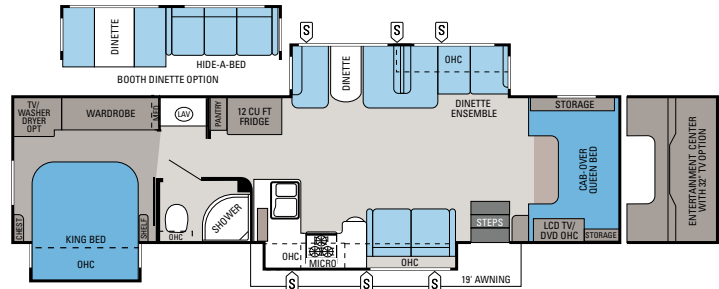
SENECA | 37FS

Exterior Length: 39' 1" Exterior Height: 157" Sleeps: 7-8



SENECA | 37RB

Exterior Length: 38' 9" Exterior Height: 157" Sleeps: 5-6



SENECA | 37TS

Exterior Length: 39' 1" Exterior Height: 157" Sleeps: 5-8

STANDARDS AND OPTIONS

CUSTOMER VALUE PACKAGE

- 12V electric awning with LED lights
- Electric power cord reel
- Back-up/side-view cameras with monitor
- In-Motion satellite dish
- Power leather driver/passenger seats
- Touch-screen premium in-dash sound system AM/FM/CD/DVD with back-up camera monitor and built-in GPS
- 15,000-BTU air conditioner with heat pump (2)
- 12 cu. ft. refrigerator with ice maker
- Convection microwave
- 1,800-watt pure sine inverter
- Tankless water heater

- Tinted, safety-glass frameless windows
- One-piece, polyethylene pass-through storage compartments
- Exterior entertainment center with AM/FM/CD/DVD player and 32" TV and two (2) speakers
- Slideout battery tray (4 batteries included)
- Onan 8,000-watt Quiet Diesel generator with auto-changeover
- 50-amp, quick-connect power cord
- 56-lb. propane tank
- Black holding tank sprayer
- Hookup for city water
- Outside shower
- Hydraulic automatic leveling jacks
- Roof ladder

STANDARD EXTERIOR EQUIPMENT

- TuffShell vacuum-bonded laminated sidewalls, crowned roof and floor
- Bead-foam insulation (R-23 roof, R-9 floor and R-9 walls)
- High-gloss fiberglass caps with radius corners
- Protective paint film
- Slideout awning toppers
- 80"-tall fiberglass, radius-cornered entrance door and screen door
- Keyless entry, touchpad locking system
- Electric-powered entrance step

STANDARD INTERIOR EQUIPMENT

- Washington Glazed solid-hardwood, raised-panel doors throughout
- Ball bearing drawer guides, 75-lb. capacity with full-drawer extension
- Deluxe hidden cabinet hinges
- One-piece, solid-surface, high-gloss countertop with integrated deep bowls and backsplash
- Water purification system
- Recessed 3-burner range with bi-fold recessed cover, 9,000-BTU SuperBurner and piezo igniter

- Dream Dinette mechanism, raises and lowers dinette tabletop
- Lap safety belts in living area
- 40,000-BTU auto-ignition furnace with digital wall thermostat
- Systems monitor panel
- 22" digital LED HDTV in bedroom
- Cable TV hookup with RG-6 coax
- 12V electrical system with 120V, 80-amp power converter
- Padded vinyl ceiling throughout
- Residential trackless carpeting with padding (bedroom and living area)
- Radius fiberglass shower with surround and glass shower door
- Skylight in shower with light
- Residential medicine cabinet with mirror
- Thetford porcelain stool with foot pedal
- King-sized bed with Denver Mattress
- Under-bed storage, bed lifts easily on gas struts (select models)

- Auxiliary start switch
- Tilt steering wheel
- Power anti-lock brakes
- Cruise control
- Deluxe heated, remote-control, side-view mirrors
- Power windows and door locks
- Privacy curtains for cab area
- 10,000-lb. hitch with 7-pin plug
- 74-gal. fuel tank
- Dual chassis batteries
- Alcoa aluminum rims
- Heavy-duty rear air suspension
- Heavy-duty front stabilizer bar

OPTIONS

- Entertainment center with 32" LED TV
- Washer/dryer combo (36FK, 37RB and 37TS)
- Washer/dryer stackable (37FS)
- Bunk DVD players (2) (37FS)
- Hide-a-bed booth dinette
- Espresso exterior paint
- Golden Burgundy exterior paint

STANDARD DRIVING EQUIPMENT

- Freightliner Business Class M2 106 chassis
- Cummins ISB 6.7L 340 HP diesel engine
- Allison 2500 MH automatic transmission
- Engine exhaust brake

SPECIFICATIONS

FLOORPLAN	EXT. LENGTH	EXT. WIDTH	EXT. HEIGHT (WITH A/C)	INT. HEIGHT	GROSS VEHICLE WEIGHT RATING (LBS.)	GROSS COMBINED WEIGHT RATING (LBS.)	ENGINE/SIZE	WHEEL BASE	FURNACE AUTO-IGNITION (BTUS)	FRESH WATER CAPACITY (INCLUDES WATER HEATER) (GALS.)	GRAY WASTE WATER CAPACITY (GALS.)	BLACK WASTE WATER CAPACITY (GALS.)
36FK	38' 8"	102"	157"	84"	28,000	33,000	6.7L CUMMINS ISB-340	268 - 1/2"	40M	81.5	40	50.0
37FS	39' 1"	102"	157"	84"	28,000	33,000	6.7L CUMMINS ISB-340	275"	40M	81.5	40	50.5
37RB	38' 9"	102"	157"	84"	28,000	33,000	6.7L CUMMINS ISB-340	270 - 1/2"	40M	81.5	92	99
37TS	39' 1"	102"	157"	84"	28,000	33,000	6.7L CUMMINS ISB-340	275"	40M	81.5	40	50

Gross Vehicle Weight Rating (GVWR): The maximum permissible weight of the motorhome, including the Unloaded Vehicle Weight (UVW) plus passengers, personal items, all cargo, fluids, options and dealer-installed accessories. The GVWR is equal to or greater than the sum of the UVW and the Cargo Carrying Capacity.

Gross Combined Weight Rating (GCWR): The maximum allowable combined weight of the motorhome used as a tow vehicle and the attached towed vehicle.

It is important for your safety and enjoyment that you are aware of the weights and tow ratings of the RV you select. Consult a competent advisor for questions or advice. Whether you are new to RVing or a veteran, get a feel for the performance of

your RV before heading out on the roadways. When you tow a vehicle with your RV, you must drive differently than when you drive a single vehicle. Practice hooking up, driving, backing up and braking in a safe environment or seek out professional instruction. Jayco affixes a weight label to each RV which lists weight information for that vehicle. Refer to that label to verify the vehicle will meet your requirements. See specifications chart above.

2-YEAR WARRANTY*

Peace of mind comes standard.



BUMPER
to
BUMPER
LIMITED WARRANTY

Nobody offers a better warranty than Jayco. With our exclusive 2-year CoPilot Limited Warranty, the only strings we attach are those that deliver the ultimate in reliability. At Jayco, your peace of mind is our priority, and that's the Jayco difference.

*For a copy of our 2-year limited warranty with full terms and conditions, please contact your local Jayco dealer or visit Jayco.com.

300 JAYCO DEALERS

A four-decade strong network.

From the sales experience to service after the sale, we consider our dealers to be an important part of the Jayco family. Establishing a solid relationship with your local Jayco dealer is a key component in the enjoyment of your new Jayco. By purchasing from a local dealer, you will have a convenient location for sales, parts and service support. We hope you consider them a part of your camping family.

Your local dealer

1-YEAR FREE

Roadside Assistance

Travel worry-free with Jayco's Customer First Roadside Assistance program, yours at no cost during your first year of ownership. This program is offered through Coach-Net, the country's largest RV emergency road service, and gives you immediate access to assistance.

Coach-Net
RV Technical & Roadside Assistance



Generations of family fun.

THE JAYCO STORY BEGAN IN 1968 WITH OUR FAMILY—THE BONTRAGERS. Lloyd Bontrager created an innovative, easy-to-use lifter system that led to a better fold-down camper. Loaded with more conveniences, he believed his camper would bring families closer together.

Since then, Jayco has helped generation after generation create family stories — good, old-fashioned family fun built around campfires with a Jayco RV nearby. At Jayco, we strive to build family-friendly products that will outlast just about everything but your memories. We'd love nothing more than to be a part of your family story. Join us in our generations of family fun.

eco advantage™

Jayco's long-term commitment to protecting the environment.



Scan this QR code with your smartphone to watch a video about our efforts and the impact we're making on our planet.
jayco.com/ecoadvantage

Follow us on



Jayco, Inc., P.O. Box 460, Middlebury, IN 46540, www.jayco.com 

See dealer for further information and prices. All information in this brochure is the latest available at the time of publication approval. Jayco reserves the right to make changes and to discontinue models without notice or obligation. Photos in this brochure may show optional equipment and props for photography purposes. RVs built for sale in Canada may differ to conform to Canadian codes. ©2013 Jayco, Inc. 14-SNCA-PL 0114-20K Printed in U.S.A.