

# SILVERBACK

By CEDAR CREEK



The Smart Choice for the Experienced RV'er

# SILVERBACK

By CEDAR CREEK



29RE

The Smart Choice for the Experienced RV'er *Seasoned travelers choose*

33RL





29RE

*Silverback Fifth Wheels for unsurpassed luxury, convenience and comfort.*

*Silverback impresses with a feeling of spacious living enhanced with cathedral slide-rooms, curved ceilings, and well placed LED lighting. A distinguished list of brand name standard features including: Jensen LCD televisions, La-Z-Boy Recliners®, Hi-MACS LG classic solid surface countertops, Maple raised panel doors and fascias, Shaw® carpets, and Congoleum® linoleum make your travel experience just as comfortable as home.*



33RL

# The Smart Choice for the Experienced RV'er

35QB4



**Decor**

*Nantucket*

*Jasmine  
Odyssey*

The 35QB4 Bunk House provides ample living space for your guests or family. The rear bedroom boasts Silverback's one of a kind, cathedral ceiling slide rooms with plenty of headroom above the top bunk.



Large 32" wide bunks can accommodate two optional Hide-a-Beds or Jackknife sofas for extra sleeping space. Access the standard second bathroom from the bunk house or outdoors.

A standard outside refrigerator keeps food and beverages on hand.

Add an optional outdoor kitchen for the ultimate in convenience. Cooking, clean up and storage are all within easy reach with a sink and faucet, weather coated cabinet doors and drawers, plus a hidden silverware drawer.



**Spice**

**Walnut Blossom**

# The Silverback Advantage

All Silverback models include these outstanding features.



*A Serta Dreamscape mattress with residential quality bedspread and pillow shams are standard on all models.*

*Silverback's bathroom includes a large sink, countertop and a double stack medicine/towel cabinet.*



*Live life comfortably with our standard La-Z-Boy® Reclina-Rockers. Choose from Fabric, Gunslinger microfiber or True Leather. (Lifetime warranty on parts – N/A 35QB4)*



**LG** Life's Good  
*LG HI-MACS® kitchen countertops are durable and provide lasting beauty. Standard sink covers and large capacity sinks are complemented with a decorative splash guard.*



*22" Deep full extension drawers where applicable.*



*The hide-a-bed air mattress sofa includes a handy storage drawer.*



*Our standard freestanding table with extension includes four dinette chairs with hidden storage under the seat. (35FL has two.)*



*Space-saving slide out pantry storage drawers. (Available only on 33RL.)*



2" x 3" Aluminum floor studs



Aluminum studded sidewalls and roof trusses on 16" centers or less



Thick Silaprene (475 PSI) guarantees solid contact between the gelcoat and aluminum frame without lamination



Residential, glasswool insulation designed by nature



Radiant shield Thermo-foil – R-38

### Roof - Calculated R-Value = R-38

- ◆ Radiant shield insulation, 97% reflective /3% emission (Valued at R-38)
- ◆ 2 Layers of residential home glasswool insulation (Valued at R-14)
- ◆ Triple layer insulation supplements the cohesive retention factors of roof decking and rubber membrane
- ◆ Attic vents
- ◆ Full length 3/8" wood roof decking for a full walk on roof
- ◆ 5" Aluminum truss roof rafters on 16" centers
- ◆ 2 Ply - Tuff Ply rubber roof membrane with built in fire retardant and 12 year warranty
- ◆ Full length drip rails from the front to the rear of the unit
- ◆ Roof is bolted to sidewall with 5/16 x 3-1/2 carriage bolts



## COLD ROOM TESTED



- ◆ Calculated R-value = R-38 in the roof & floor
  - ◆ 12 Volt heating pads on all tanks
  - ◆ 2 Layers of residential insulation
  - ◆ 1 Layer of radiant shield Thermo-foil
- What else would you desire in a fifth wheel?

# Cedar Creek's Famous All Aluminum Super Structure



## Floors & Underbelly - Calculated R-Value = R-38

- ◆ Radiant shield insulation, 97% reflective/ 3% emission (Valued at R-38)
- ◆ 2 Layers of residential home glasswool insulation (Valued at R-14)
- ◆ 12 Volt heating pads on all tanks
- ◆ Triple layer insulation enhances the protective values of plywood, vinyl carpet, carpet pads, tank heaters etc.
- ◆ Handmade 3" aluminum frame floor w/in-floor heat ducting and custom "L" brackets combined with silaprene adhesives
- ◆ 5/8" Tongue & groove plywood – glued and screwed
- ◆ Cambered 10" I beam with large support outriggers & full length welds
- ◆ Darco waterproof underbelly
- ◆ Fully enclosed 4' x 8' ABS removable panels for easy access to the tanks

## 2" Thick Side Walls - Calculated R-Value = R-9

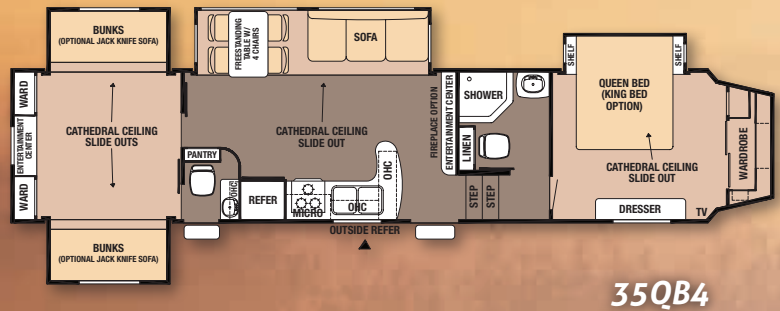
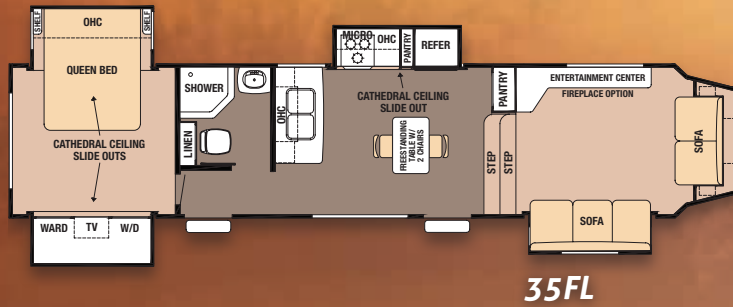
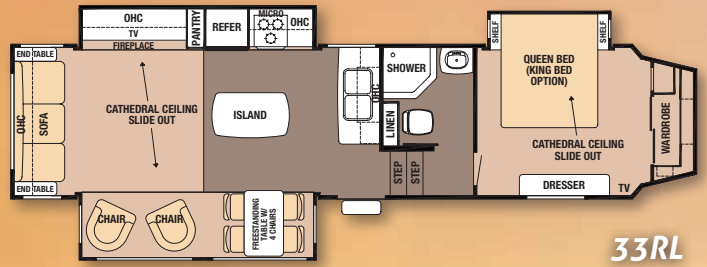
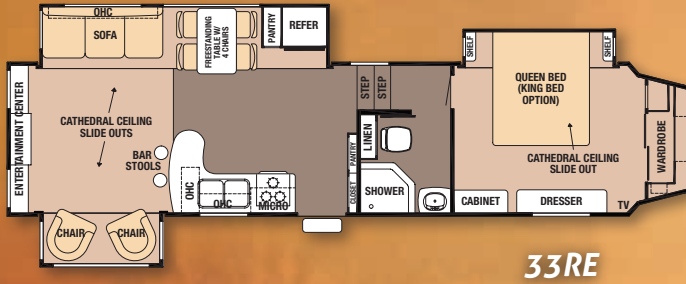
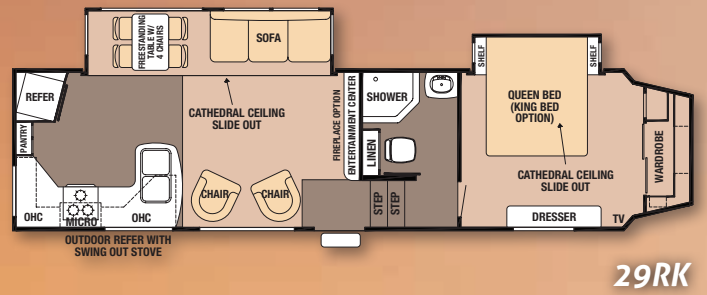
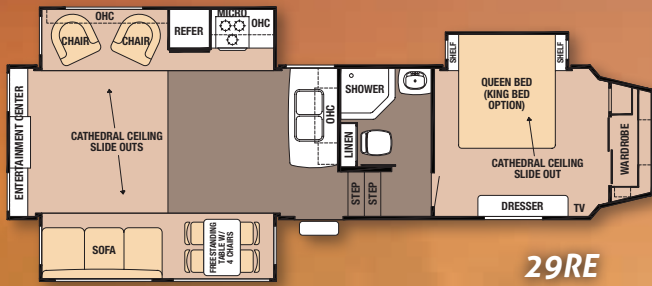
- ◆ Cedar Creek's famous all aluminum super-structure: handmade 2" x 2" aluminum studs on 16" centers (or less). Individually fastened custom "L" brackets combined with Royal Silaprene® Bonded Sidewalls are resilient and grow stronger with age. This adhesive also has outstanding resistance to UV, heat, cold, moisture, oils, gasoline, highway chemicals and creates a bond that cannot delaminate with time for a strong, flexible frame without welding or lamination.
- ◆ True classic performance plus gelcoat on all exteriors – the best of the best in fiberglass. Don't accept hi-gloss fiberglass or gel-coated sidewalls – only true performance plus gelcoat stands the test of time.
- ◆ All 1-1/2" thick baggage doors and entry doors are made out of true classic performance gelcoat to prevent uneven aging of your unit!!
- ◆ Sidewalls are bolted to the floor with 5/16" x 6-1/2" carriage bolts at each outrigger
- ◆ Glued fiberglass insulation expanded to full capacity within the sidewall frame (Valued at R-7)
- ◆ Designed by Forest River, a unique slide-out seal system for tighter, stronger water protection - first of its class - compare it!
- ◆ 5 Direction insulation in all slide-out rooms



## 90°+ Turning Radius

The aerodynamic, front cap achieves a FULL 90 degree (plus a little extra) turning radius even when towed by short bed trucks.

# Floorplans



# Specifications

Model	29RE	29RK	33RL	33RE	35FL	35QB4
Exterior Length	33'11"	33'9"	36'6"	36'5"	39'	39'9"
Exterior Height w/Air Conditioner	12'11"	12'11"	12'11"	12'11"	12'11"	12'11"
Exterior Width	96"	96"	96"	96"	96"	96"
Front Bedroom Interior Height	6'6"	6'6"	6'6"	6'6"	6'6"	6'6"
Hitch Weight	1615	1755	2015	1850	TBD	1947
Axle Dry Weight	8175	7985	8400	8699	TBD	10229
Unloaded Vehicle Weight	9970	9740	10415	10549	TBD	12176
GVWR	13615	13755	14015	13850	TBD	15500
Gross Cargo Capacity	3645	4015	3600	3301	TBD	3324
Dual Axles (2 Straight)	6000#	6000#	6000#	6000#	6000#	7000#
Tire Size	ST235/80R/16E	ST235/80R/16E	ST235/80R/16E	ST235/80R/16E	LT235/80R/16E	LT235/85R/16G
Awning Size	15'	21'	15'	18'	18'	21'
Furnace Size	35,000 BTU	35,000 BTU	35,000 BTU	35,000 BTU	40,000 BTU	40,000 BTU
Demand Fresh Water Capacity	66	66	66	66	66	66
Grey Water/Black Water Tanks	80/40	80/40	80/40	80/40	80/40	80/40
Sleeping Capacity	6	6	6	6	6	8 - 10

All Weights listed above are base weights. Weight capacities +/- 5%.  
 NOTE: All fifth wheel lengths include extended pin box and 4" bumper.  
 Model number of any particular unit does not necessarily reflect the overall length of the unit itself.



## Explorer Package:

- ◆ LCD Flat Panel HD Ready Television
- ◆ 12 Volt CD/DVD, AM/FM Stereo
- ◆ 2 Exterior Waterproof Patio Speakers
- ◆ 8 Cu. Ft., Wood Front Refrigerator
- ◆ Hide-a-Bed Sofa with Air Mattress
- ◆ Over the Range Microwave with Vent
- ◆ LG Hi-MACS Classic Solid Surface Countertops
- ◆ True Nobel Classic Gel Coat Exterior
- ◆ Black Tank Flush
- ◆ 16" Tires, Dexter Axles
- ◆ Dexter E-Z Flex Suspension
- ◆ Dexter Nev-R-Adjust Brakes and Suspension
- ◆ LED Lighting – Lifetime Warranty
- ◆ Bathroom Breeze Power Fan
- ◆ Rear Stabilizer Jacks
- ◆ Tinted Safety Glass
- ◆ Entire Water Filtration System
- ◆ Cedar Creek Switch Control Center
- ◆ Winegard HD Roof Satellite Prep



Dexter Axles/Brakes/Suspension for the best in safety and performance.



Many of our competitors use false foam in their fascia. Silverback's solid wood fascia gives "A" quality difference you can hear and feel!

Silverback's front storage compartment is insulated with 1-1/4" thick baggage doors. The central docking station includes the water bypass, outside shower, easy access dump valves, slide-room valves and water systems. Forest River's exclusive water filtration system filters drinking water AND the entire water system of the coach. The spare tire is also stored up front for convenience.



## Standard Features

- ◆ LED Lighting with Lifetime Warranty
- ◆ 10 Gallon Water Heater
- ◆ 12 Volt Heated Holding Tanks
- ◆ Ducted 15,000 BTU Air Conditioner
- ◆ Attic Vents
- ◆ Brace & Wire for 2nd Air
- ◆ Digital Thermostat for Heat & Air Conditioner
- ◆ 55 Amp Converter with Charger
- ◆ 50 AMP Power Cord
- ◆ Radius Ceiling
- ◆ New Interior – Hickory Glazed Maple Hardwood
- ◆ Cathedral Slide Rooms in both Living and Bedroom Areas
- ◆ Solid Wood Fascia – No Wrapped Foam – Try the Tap Test
- ◆ Serta® Residential Dreamscape Mattress
- ◆ Bathroom Breeze Fantastic Fan
- ◆ Create-a-Breeze Fan with Thermostat & Rain Sensor in Kitchen
- ◆ Porcelain Toilet with Top Swirl Flush
- ◆ Full Extension Drawer Roller Guides
- ◆ La-Z-Boy® Fabric Recliners or Micro-Fiber Gunslinger Recliners (W/A)
- ◆ Hide-A-Bed with Air Mattress
- ◆ Docking Station with Ezy Access
- ◆ By-Pass Valves for the Water Heater Systems
- ◆ Enclosed & Insulated Underbelly with Heating Pads on All Tanks
- ◆ Dexter E-Z Flex Rubber Equalization System with Grease Zerks and Bronze Bushings
- ◆ Dexter Nev-R-Adjust Brakes
- ◆ Dexter Ezy Lube Hubs
- ◆ 16 Aluminum Rims
- ◆ Front Storage for Spare Tire
- ◆ LED Tail Lights and Lower Front Lights
- ◆ Lighted Entry Step
- ◆ Soft Top Vinyl Storm Doors

## Options

- ◆ 19 LCD Television with Thule® Tip & Swivel Removable Bracket including Exterior Mount & Outlet
- ◆ 50 AMP Cord Reel
- ◆ Dinette Table Replacing Freestanding Table and Chairs
- ◆ Fireplace
- ◆ Hide-A-Bed (35QB4) Replacing Bottom Bunks – Off Doorside
- ◆ La-Z-Boy® (Light Beige) Leather Recliners
- ◆ La-Z-Boy® (Coffee) Gunslinger Recliners & Sofa
- ◆ Inter-Vac Central Vacuum System
- ◆ Jack-Knife Sofa Replacing Bottom Bunk (35QB Only)
- ◆ Outside Kitchen which Includes Sink with Faucet, Large Surface Counter, Cabinets and Cooktop
- ◆ Penguin 13,500 2nd Air Conditioner
- ◆ Rear Electric Jacks
- ◆ Serta® Dreamscape King Bed
- ◆ Serta® Trump Home Luxury Queen or King Mattress
- ◆ Thermopane Windows (Tinted)
- ◆ Washer / Dryer Prep (Combination Only)



Removable "Soft Top" Vinyl Storm Doors allow light and visibility without losing cooling or heating.



#### PRE-DELIVERY INSPECTION FACILITY

20,000 square feet of quality assurance. The bare essentials for a premium product. This state-of-the-art facility gives immediate daily feedback to production for quality assurance in every unit built.



Forest River, Inc. encourages our customers to purchase their Forest River products from a local dealership whenever possible for the following reasons:

- 1) Forest River, Inc. dealers are independently owned and operated businesses so priority service and scheduling is at their discretion and is often provided to customers that purchased their unit at that dealership.
- 2) Purchasing locally allows customers to establish meaningful relationships with a dealer, enhancing the RV experience through assistance with product questions, user tips or RV regulations for your state or country, and much more!
- 3) Canadian customers must meet requirements to bring an RV purchased out of the country to their home. These requirements may involve additional inspections and certifications, taxes and fees. Your local Canadian Dealer is a professional at meeting these requirements.
- 4) Scheduling timely warranty repairs and adjustments through a local dealership provides far greater flexibility and convenience to you, the customer!

It is the goal of Forest River, Inc. that all of our RV owners fully enjoy the RV experience and that customer satisfaction meets or exceeds their expectations!

## The Silverback Experience

Cedar Creek is dedicated to enhancing the joy of the outdoors and your peace of mind, by building better quality recreational vehicles designed to withstand rugged road conditions and extreme temperatures. Experience Silverback – see where the road leads and enjoy what life has to offer!



# SILVERBACK

by CEDAR CREEK

*The Smart Choice for the Experienced RV'er*

**FOREST RIVER INC./CEDAR CREEK DIVISION**

501 Hawpatch Road / Topeka, IN 46571

Ph: 260-593-2404 / Fax: 260-593-2447

Parts & Service / Ph: 260-593-3017 / Fax: 260-593-2645

All illustrations and specifications contained in this literature are based on the latest product information at the time of publication. Forest River, Inc. reserves the right to make changes in prices, colors, materials, equipment and specifications at anytime, without notice, and assumes no responsibility for any error in this literature. All units are shipped F.O.B. point of manufacture. ©2012 Cedar Creek.

A division of Forest River, Inc., a Berkshire Hathaway Company. 8/12 Silverback

**YOUR SILVERBACK DEALER**

#### 24/7 EMERGENCY ROADSIDE ASSISTANCE

For a worry-free ownership experience

Forest River includes one

year of Coach-Net RV Technical & Roadside

Assistance with each RV purchase. Whether

new to the RV lifestyle or an experienced RV enthusiast,

Forest River owners have 24/7 access to technical,

operational and emergency road service

coverage throughout the US & Canada.

Coach-Net's fast, dependable

service is just a phone

call away.

### Coach-Net®

RV Technical & Roadside Assistance



#### Learn More

Scan this barcode using a QR Reader on your smart phone to learn more about Forest River.



A Berkshire Hathaway company.

On The Web at: [www.forestriverinc.com/cedarcreek](http://www.forestriverinc.com/cedarcreek)