

2013 VENTANA LE & VENTANA - Diesel Motor Coach



NEWMAR CORP.



WHEN YOU KNOW THE DIFFERENCE<sup>SM</sup>

2013  
Ventana LE  
Ventana  
*Diesel Motor Coach*

# 2013 VENTANA LE

*Diesel Motor Coach*

Genuine Newmar styling and performance.

Room to spare and thoughtful extras.

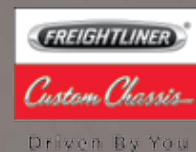
The solid strength of a Freightliner® Custom Chassis. And the price? That may be the most pleasant surprise of all with the 2013 Ventana LE.



*Ventana LE Exterior*  
*Garnet Designer Style*

## FEATURES AT A GLANCE

- Full-Paint Masterpiece™ Finish with front protective film
- 6.0-kW Cummins Onan® Diesel Quiet Series Generator
- Freightliner® Custom Chassis with 340HP Cummins ISB Engine
- Manual tilt and telescope steering column with VIP Smart Wheel
- One-piece bonded windshield
- Cruise control and anti-lock braking system



Cummins Onan



## Affordable elegance inside and out.

Ventana LE is built for beauty and solid performance. Newmar's Full-Paint Masterpiece™ Finish is the crowning jewel of a look that carries the upswept graphics and design detail of a high end luxury diesel. Behind this gorgeous coach's wheel, you're in command of a powerful 340HP Cummins® ISB engine, with VIP Smart Wheel for easy control and standard side view cameras.





*Ventana LE*  
Quartz Décor Scheme with Empire Maple Glazed  
Cabinetry in Floorplan # 3434

# Step in. And step up to something special.

The 2013 Ventana LE brings you handsome new décor, all glazed cabinetry, a roomy homestyle kitchen – and we're just getting started. Rest easy in a Flexsteel® sofa next to a matching recliner that puts you and your guests directly across from an optional 32" front overhead HDTV with a Sony® Surround Sound System. This spacious cabin with its full wall slide, residential quality furnishings and attractive design refute Ventana LE's equally attractive price.



\* Optional

## A simply delicious kitchen.

Your L-shaped Ventana LE kitchen offers a polished solid surface countertop and backsplash, a stainless steel sink with residential quality fixtures, glazed and mitered designer doors – even a charming window to let the sunshine in. Who's hungry?



**SONY.**

### FEATURES AT A GLANCE

- Glazed unitized cabinets
- Polished solid surface kitchen countertop w/stainless steel sink
- Flexsteel® Delux sofa
- Color monitor system with rear and side view cameras
- Sony® Surround Sound System with sub-woofer\*





# A bedroom to inspire dreams.

The Ventana LE's sleeping quarters let you curl up surrounded by Newmar craftsmanship. Its queen size bed's hardwood frame has a suede headboard insert as a luxurious accent, while its overhead raised panel doors with down-lighting add more than ample storage.

A full bedroom cabinet wardrobe is standard in Ventana LE. You can even add an optional washer/dryer for true versatility.

## SONY.



## Every night is movie night.

Ventana LE's queen size bed squarely faces a 32" LCD TV with DVD. And day/night shades deliver your choice of evening privacy or a dawn's eye view of what the morning has in store.

### FEATURES AT A GLANCE

- LCD TV in living and bedroom areas
- Pullout bathroom step stool with storage\*
- Smooth top queen mattress with quilted bedspread, and accent pillow
- Shower with glass door
- Vinyl tile floor in kitchen, bathroom and living area

\*Optional



## Space. Style. Storage.

Your Ventana LE bathroom offers the comforts of a shower, handcrafted cabinets with room to spare, even a pull out step drawer to help visiting little ones wash up at the stainless steel sink and countertop with solid surface edge vanity.

### EXTERIOR DESIGN & DÉCOR OPTIONS

QUARTZ



GARNET



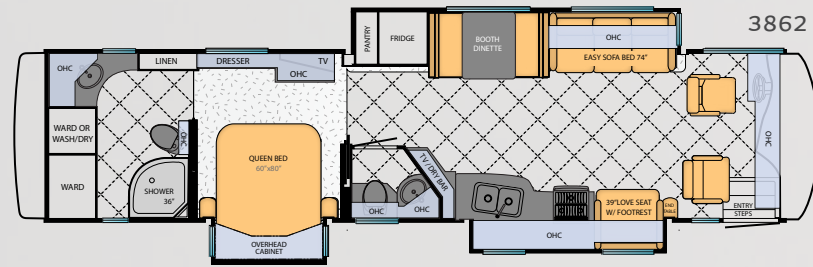
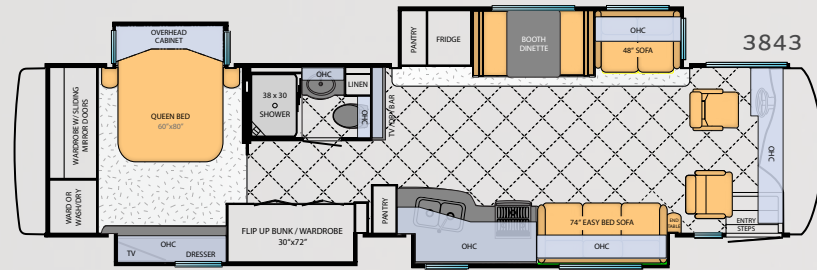
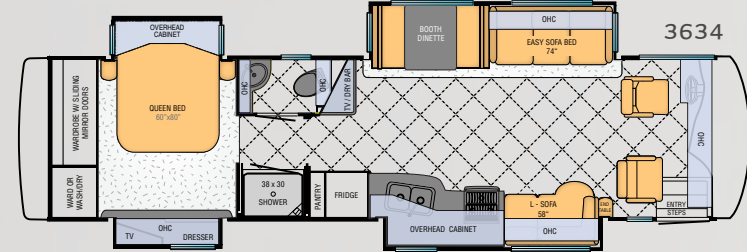
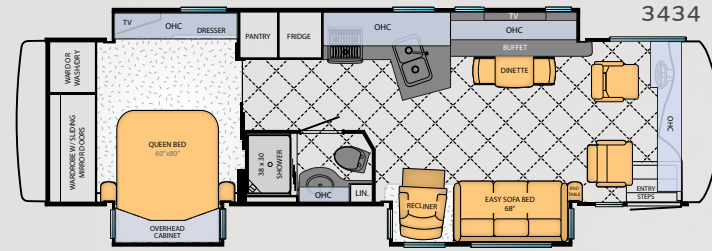
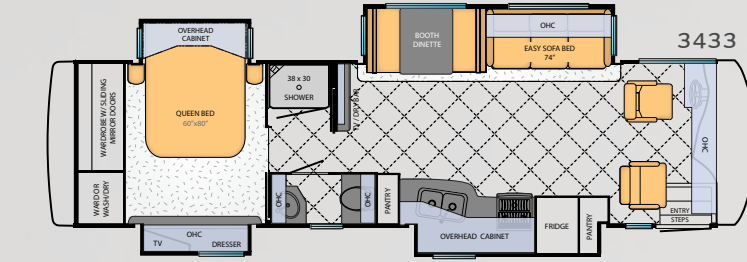
### WOOD OPTIONS



EMPIRE MAPLE WITH GLAZED DOORS



SIENNA MAPLE WITH GLAZED DOORS



FLOORPLAN SPECIFICATIONS

Floorplan	App. Overall Length	Width	App. Overall Height	Interior Width	Interior Height	Grey	Sewage	Water	Propane	Furnace
3433	34' 10"	101.5"	12' 5"	95.5"	84"	65 gal.	45 gal.	105 gal.	32 gal.	54,000 btu
3434	34' 10"	101.5"	12' 5"	95.5"	84"	65 gal.	45 gal.	105 gal.	32 gal.	35,000 btu
3634	36' 08"	101.5"	12' 5"	95.5"	84"	65 gal.	45 gal.	105 gal.	32 gal.	54,000 btu
3843	38' 08"	101.5"	12' 5"	95.5"	84"	65 gal.	45 gal.	105 gal.	32 gal.	54,000 btu
3862	38' 08"	101.5"	12' 5"	95.5"	84"	65 gal.	45 gal.	105 gal.	32 gal.	54,000 btu

CHASSIS FEATURES

- Freightliner® Custom Chassis XCR with 340Hp Cummins® ISB Engine
- Chrome Wheel Simulators
- Hydraulic Leveling Jacks
- Cruise Control
- Manual Tilt and Telescope Steering Column with VIP Smart Wheel
- Recessed Fuel Fills with Crossover to Fill from Either Side
- Anti-Lock Braking System

APPLIANCES & ACCESSORIES

- Spacesaver Microwave Oven
- Three-Burner Cooktop with Piezzo Ignition
- Norcold® 10-Cu.Ft. Refrigerator
- 10-Gal. Gas/Electric Water Heater with Direct-Spark Ignition\*
- One-Piece Compact Washer/Dryer Prep\*
- LCD TV in Living and Bedroom Areas; TV Sizes Vary per Floorplan\*
- AM/FM Dash Radio with MP3 Adapter and CD Player
- Rear View Color Monitor System with Audio

- Side View Cameras Displayed onto Rear View Monitor Screen
- DVD Player in Bedroom
- 10-Bc Fire Extinguisher, Smoke Detector and Carbon Monoxide Detector
- TV Antenna with Power Booster
- Satellite Prep

AIR CONDITIONING & HEATING

- Two 13.5M Penguin™ Heat Pump Central Air Conditioners
- Propane Furnace with Ducted Heat
- Dash Heater & High Output Air Conditioner
- Propane Leak Detector
- Wall Mounted Sensors for Heating and Air Conditioning
- Driver/Passenger Overhead Dash Fans

CABINETS & FURNITURE

- Empire Maple Mitered Designer Glazed Cabinet Doors
- Concealed Hinges on Cabinet Doors
- Drawers with Full Extension Guides
- Fixed Pantry Shelves
- Booth Dinette with Forward Facing Seat Belts\*

- Polished Solid Surface Countertop in Kitchen with Stainless Steel Sink and Flush Sink Covers
- Laminate Countertop with Solid Surface Edge in Bathroom with Stainless Steel Sink
- Laminate Countertop on Nightstands, Dressers and Chest of Drawers
- Residential Style Full Extension Ball Bearing Drawer Guides
- Flexsteel® Delux Leather Furniture
- Smooth Top Mattress with Quilted Bedspread, Shams and Accent Pillows
- Pullout Step Stool with Storage in Bathroom
- Front Seats with 6-Way Power

ELECTRICAL FEATURES

- 6.0-kW Cummins Onan® Diesel Quiet Series Generator
- 50-Amp Electrical Service with Flexible Cord
- Four 6-Volt House Batteries on Pullout Tray
- Battery Disconnect Switch
- 110-Volt Exterior Receptacle
- 1200-Watt Inverter
- Emergency Start Switch

- Exterior Security Light on Door Side
- Midship Side Turn Signals
- Halogen Lights Recessed in Ceiling and Overhead Cabinets
- Manually Operated Hold-To-Run Slideout Switch
- ICC Light Flasher Switch
- 12-Volt Auxiliary Receptacle on Dashboard
- Exterior TV Jack
- Interior Courtesy Lights

PLUMBING & BATH FEATURES

- Demand Water System with SHURflo® Pump
- Sewage Holding Tank Rinse
- Water Heater Bypass System\*
- Theford™ Aqua Magic Plus China Stool\*
- Monitor Panel
- Fiberglass Shower with Glass Door\*
- Exterior Shower
- Water Filter for Entire Unit

WINDOWS, AWNINGS & VENTS

- One-Piece Tinted Windshield
- Single-Pane Tinted Safety Glass Windows

- Power Vent in Kitchen and Bathroom
- Shower Skylight
- Dometic® 9000 Plus Side Awning with Aluminum Shield
- Dometic® Oasis Manual Front Entrance Door Awning
- Dometic® Slideout Awning Covers

EXTERIOR FEATURES

- Full-Paint Masterpiece Finish™ with Front Protective Film
- One-Piece Bonded Windshield
- Convex Exterior Mirrors with Remote Control and Defrost
- Entrance Door with Automatic Step
- Power Flush Stepwell Cover
- Lighted Exterior Storage Compartments with Cargo Liner
- Assist Handle at Entrance Door
- Mud Flaps
- Rear Ladder
- Undercoating

INTERIOR FEATURES

- Padded Vinyl Ceiling
- Day/Night Pleated Window Shades & Lambrequins

- Mini Blinds in Kitchen and Bathroom
- Vinyl Tile Floor in Kitchen, Bathroom and Living Area
- Carpet in Living Room and Bedroom
- Day/Night Privacy Shades on Driver/Passenger Side Windows
- Power Day/Night Shades for Windshield

CONSTRUCTION FEATURES

- BriteTEK™ Roof with Walkable Decking
- Gel Coated Fiberglass Exterior Sides
- Gel Coated Fiberglass Front and Rear Caps
- Aluminum Frame Sidewalls & Roof Construction, 16" on Center
- 5/8" Foam Insulation Laminated in Sidewalls and Ceiling

OPTIONS

CHASSIS FEATURES

- TripTek™ Electronic Travel Information (Displayed on Rearview Monitor)

AIR CONDITIONING & HEATING

- Two 15M Penguin Heat Pump Air Conditioner and Energy Management System\*

APPLIANCES & ACCESSORIES

- Norcold® 12-Cu.Ft. 4-Door Refrigerator with Icemaker\*
- Maytag Residential Refrigerator with Icemaker and Water Dispenser, includes 2000-Watt Pure Sine Inverter with 2 Extra Batteries\*
- 30" Convection Microwave Oven
- Three-Burner Cooktop with Piezzo Ignition
- Icemaker added to Refrigerator\*
- Whirlpool® 2-Piece Washer & Dryer Stacked in Full Height Wardrobe

- Compact 1-Piece Washer/Dryer\*
- 32" LCD TV in Front Overhead\*
- Automatic Satellite without Receiver
- Sony® Surround Sound System with Sub-woofer
- Side View Cameras
- Preprogrammed Universal Remote Control
- 11" Flip-Down LCD TV and DVD Player with Headphones at Each Bunk\*

CABINETS & FURNITURE

- Sienna Maple Cabinets
- Hide-A-Bed Sofa with Air Mattress\*
- Sleep Number Deluxe® Air Mattress
- Extenda L Sofa on Off Door Side

ELECTRICAL FEATURES

- 8.0-kW Onan® Diesel Quite Series Generator
- LED Lights

EXTERIOR FEATURES

- Large Chrome Exterior Mirrors
- Large Storage Tray with Access from One Side or Either Side\*

INTERIOR FEATURES

- Halogen Lighting
- Vinyl Floor Extended into Bedroom
- Power Day/Night Shades in Place of Day/Night Pleated Windows

PLUMBING & BATH FEATURES

- 110-Volt Heat Pads for Holding Tanks
- Bathtub\*

WINDOWS, AWNINGS & VENTS

- Dometic® 9000 Window Awning
- Dometic® Weather Pro Side Awning & Oasis Power Front Entrance Door Awning
- Kitchen Window

CONSTRUCTION FEATURES

- One-Piece Molded Fiberglass Roof

WINDOWS, AWNINGS & VENTS

- Dometic® Weather Pro Side Awning & Oasis Power Front Entrance Door Awning
- Bunk Windows\*
- Double-Pane Tinted Safety Glass Windows\*
- Fantastic® Vent with Rain Sensor in Kitchen and Bathroom

\*Check with dealership on floor plan availability and complete listing of features.

# 2013 VENTANA

*Diesel Motor Coach*

No one makes it easier than Newmar to harness high end diesel power at a surprisingly affordable price. With the 2013 Ventana, it all comes together – a gorgeous exterior, a handsomely appointed cabin and standards that feel like extras—all designed to bring you the ride you've always deserved.



*Ventana Exterior  
Monterey Designer Style*

## FEATURES AT A GLANCE

- Full-Paint Masterpiece™ Finish with front protective film
- Comfort Drive™ Steering with adjustable control
- Freightliner® Custom Chassis with 360HP Cummins® ISB Engine on 34'–36' floorplans
- Freightliner® Custom Chassis Tag Axle with 380HP Cummins® ISC Engine on 40'–43' floorplans
- 8.0-kW Cummins Onan® Diesel Quiet Series Generator
- Cruise control and anti-lock braking system
- External entertainment center in sidewall with Sony® 40" LCD TV\*



Cummins Onan



**The price is right.  
The performance is righteous.**

More room, more power, more amenities. However you measure quality, Ventana delivers. Both the 360HP Cummins® ISB diesel and the 380HP Cummins® ISC engine can handle any road. And with a Flexsteel® captain's chair, Newmar's exclusive Comfort Drive™ Steering and a wealth of fingertip cockpit controls, you've never had an easier time behind the wheel. Cargo stows easily – and almost endlessly – with heavy duty slide out trays. Ventana's side wall also has the option to reveal a Sony® 40" HDTV entertainment center.

\*Optional



*Ventana*  
Monterey Décor Scheme with Verona Maple Glazed  
Cabinetry in Floorplan # 4346



# Crafted to please. Priced to astound.

Inside your 2013 Ventana, the look is unmistakably Newmar. From its master crafted solid wood glazed cabinet doors, now in Sienna Maple.\* To its striking new floor design, laid out in 16" x 16" tile with accent inserts to its Flexsteel® sleeper sofa and matching lounge, now with the same enhanced comfort foam found in residential furniture. And we haven't even mentioned Ventana's top shelf kitchen with stainless appliances, solid surface counters and hidden cabinetry hinges – for plentiful storage with a cleaner look. How much enjoyment can we fit into Ventana? You're about to find out.



\* Optional

## Simple pleasures. Solid performance.

Ventana's Sony® HDTV/DVD System acts as a kitchen/living area centerpiece. A pull out island under the TV adds serving space and the expandable solid surface dinette with hidden leaf creates quick, convenient seating for four.



**SONY®**

### FEATURES AT A GLANCE

- Sienna Maple cabinets with designer mitered glazed doors\*
- Polished solid surface kitchen countertop w/undermounted acrylic sink
- Flexsteel® Ultralux leather furniture
- Polished porcelain tile floor in kitchen, bathroom and living area
- Sony® HDTV/DVD system
- MCD day/night shades\*



# Slip between the covers of a dream come true.

With Ventana, the end of a long day signals the beginning of a blissful night. The king size bed lets you sink into unmatched comfort and style, relaxing against the woven faux leather of an individually crafted hardwood headboard. Above the bed, wraparound storage cabinets help to keep everything in its place.

Across the bedroom, even more storage – plus MCD day/night shades for anytime privacy. Not tired yet? No problem. A second Sony® HDTV entertainment system with DVD means the stars can come out whenever you wish.

## Extras you can appreciate. Names you can trust.

There's always something special waiting to be discovered in your Ventana, like an optional handheld Dyson® vacuum, cleverly hidden in the bedroom wardrobe. The best names in quality come together when your coach's name is Newmar.

\*Optional



SONY.

### FEATURES AT A GLANCE

- Sony® LCD TV and DVD player in bedroom
- King size bed with quilted bedspread and accent pillow
- Polished porcelain tile floor in kitchen, bathroom and living area
- Carpeting in living room and bedroom
- Sleep Number® deluxe air mattress\*





#### FEATURES AT A GLANCE

- Standard size radius shower
- Polished porcelain floor tile in kitchen, bathroom, and living areas
- Demand water system
- Two-piece washer and dryer in walk-in closet\*

## Comfortably elegant. Beautifully practical.

A spacious stand up shower welcomes you to the comforts of Ventana's master bath. This roomy retreat features hardwood cabinetry, solid surface vanity counters with an integrated bowl and backsplash, and a designer toilet.

Special touches in your Ventana bathroom include a skylight port to brighten your showers, a vanity step drawer that pulls out for a convenient boost plus a mid-cabin half bath for visiting guests.

#### Ingeniously efficient.

Ventana's polished porcelain bathroom flooring leads to a handy walk-in closet with a two-piece washer/dryer.\* With Newmar, convenience is always just a few steps away.



EXTERIOR DESIGN & DÉCOR OPTIONS



WOOD OPTIONS



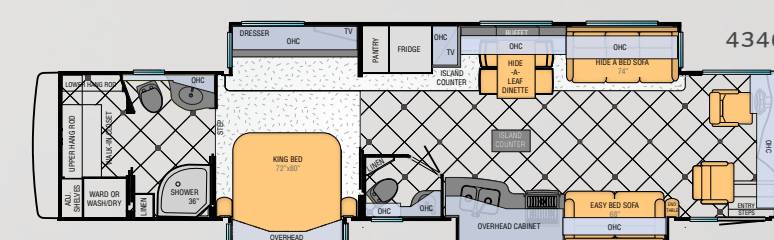
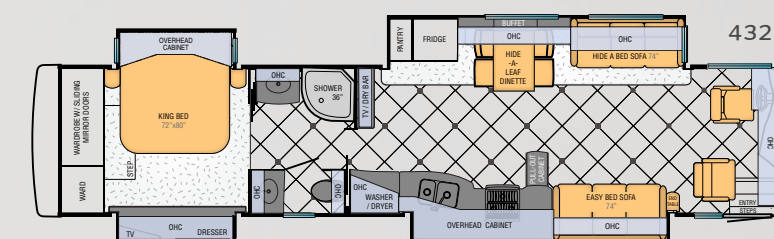
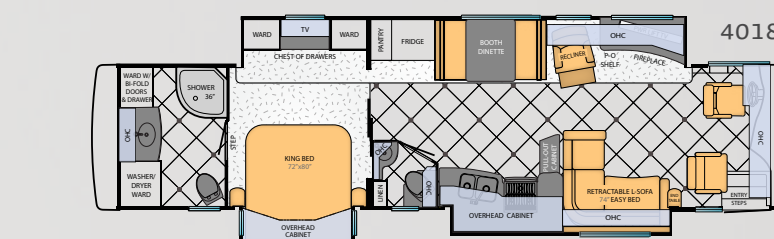
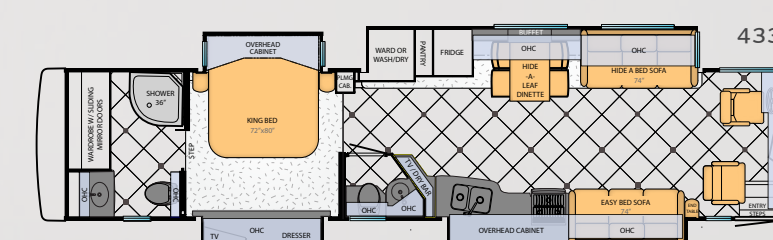
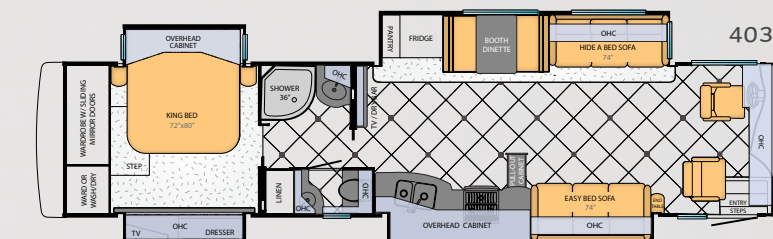
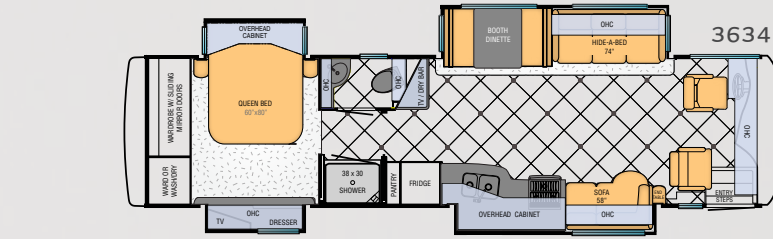
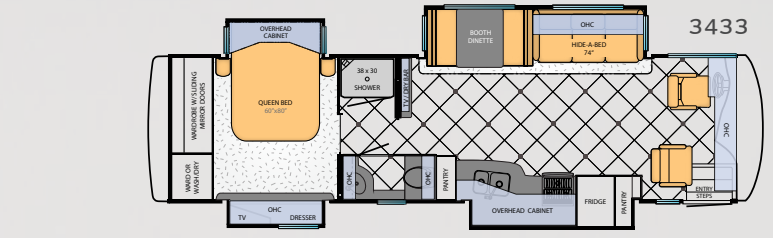
EMPIRE MAPLE WITH GLAZED DOORS  
SIENNA MAPLE WITH GLAZED DOORS



MANHATTAN MAPLE WITH GLAZED DOORS  
VERONA MAPLE WITH GLAZED DOORS

FLOORPLAN SPECIFICATIONS

Floorplan	App. Overall Length	Width	App. Overall Height	Interior Width	Interior Height	Grey	Sewage	Water	Propane	Furnace
3433	34' 10"	101.5"	12' 5"	95.5"	84"	65 gal.	45 gal.	105 gal.	32 gal.	54,000 btu
3434	34' 10"	101.5"	12' 5"	95.5"	84"	65 gal.	45 gal.	105 gal.	32 gal.	35,000 btu
3634	36' 08"	101.5"	12' 5"	95.5"	84"	65 gal.	45 gal.	105 gal.	32 gal.	54,000 btu
4018	40' 10"	101.5"	12' 8"	95.5"	84"	65 gal.	45 gal.	105 gal.	32 gal.	54,000 btu
4038	40' 10"	101.5"	12' 8"	95.5"	84"	65 gal.	45 gal.	105 gal.	32 gal.	54,000 btu
4324	42' 10"	101.5"	12' 8"	95.5"	84"	65 gal.	45 gal.	105 gal.	32 gal.	50,000 btu
4337	42' 10"	101.5"	12' 8"	95.5"	84"	65 gal.	45 gal.	105 gal.	32 gal.	50,000 btu
4346	42' 10"	101.5"	12' 8"	95.5"	84"	65 gal.	45 gal.	105 gal.	32 gal.	50,000 btu



## CONSTRUCTION & SPECIFICATIONS

Like a fine home, Ventana is framed 16 inches on center, allowing the best placement of outlets, switches and other components. Newmar uses only Sikaflex elastic adhesive throughout Ventana's

construction – one of the strongest bonding agents available. It seals against air and water and helps dampen sound and vibration. Electrical wiring holes in Ventana's aluminum frame are ringed with

plastic grommets to protect wires from chafing. And Newmar's Total Comfort™ Central Air is two separate, fully ducted systems that distribute cool air and remove warm air.



### ROOF R-VALUE = 19

- a. BriteTEK™ Roof (optional one-piece fiberglass roof)
- b. 9mm Wood Decking
- c. Fiberglass Batten Insulation
- d. A/C Ducting
- e. Aluminum Roof Truss
- f. Kraft Paper Vapor Barrier
- g. 5/8" Bead Foam
- h. 3/16" Panel
- i. Padded Vinyl Overlay

### SIDEWALL R-VALUE = 11

- j. 3/16" Plywood Interior Wall
- k. 5/8" Bead Foam
- l. Kraft Paper Vapor Barrier
- m. Fiberglass Batten Insulation
- n. 3/16" Plywood Exterior Wall
- o. Composite One-Piece Gel Coat Exterior Sidewall
- p. 16" On Center Aluminum Framing with 3 1/2" Header

### FLOOR R-VALUE = 16

- q. Carpet/Tile
- r. Carpet Padding
- s. 5/8" Floor Decking
- t. Fiberglass Batten Insulation
- u. 2" x 3" Wood Framing
- v. Polyethylene Moisture Barrier
- w. Foam Panels (Noise Protection)
- x. Aluminum Ducting

### BASEMENT R-VALUE = 4

- y. Cargo Liner
- z. 3/8" Floor Decking
- aa. 3/16" Luan Panel
- bb. 1 1/2" Bead Foam
- cc. Aluminum Sheeting (Prevents Distortion)

- 1. 13.5M Penguin™ Heat Pump Central Air Conditioners (2)
- 2. One-Piece Windshield
- 3. Coated Aluminum Wheels
- 4. Double-Pane Tinted Safety Glass Windows
- 5. Side-Hinged Baggage Doors w/Optional Pull Out Tray

Lengths, heights, widths and dry weights are approximate. Weight will vary based on optional equipment added to the above base weight.

**GAWR:** Gross Axle Weight Rating is the maximum permissible weight for an axle.

**GVWR:** Gross Vehicle Weight Rating is the maximum permissible weight for a fully loaded motor coach.

**GCWR:** Gross Combination Weight Rating is the value specified by the manufacturer of the vehicle as the maximum allowable loaded weight of this motor coach and any towed trailer or towed vehicle.

**UVW:** Unloaded Vehicle Weight is the weight of this motorcoach as built at the factory with full fuel, engine oil and coolants. The UVW does not include cargo, fresh water, propane gas or dealer-installed accessories.

**NCC:** Net Carrying Capacity is the maximum weight of all occupants, including the driver, personal belongings, food, fresh water, waste water, propane gas, tools, tongue weight of towed vehicle, dealer installed accessories, etc., that can be carried by the motorcoach.

\*Specifications supplied by the chassis manufacturer.

## CHASSIS FEATURES

- Freightliner® Custom Chassis XCR with 360Hp Cummins® ISB Engine on 34'- 36' Floorplans
- Freightliner® Custom Chassis Tag Axle XCR with 380Hp Cummins® ISC Engine on 40'- 43' Floorplans
- Accuride Accu-Shield™ Aluminum Wheels
- Hydraulic Leveling Jacks
- Cruise Control
- Comfort Drive™ Steering with Adjustable Control
- Manual Tilt and Telescope Steering Column with VIP Smart Wheel
- Recessed Fuel Fills with Crossover to Fill from Either Side
- Back Up Alarm
- Anti-Lock Braking System

## APPLIANCES & ACCESSORIES

- 30" Convection Microwave Oven
- Three-Burner Cooktop with Piezzo Ignition
- Solid Surface Range Cover
- Norcold® 10-Cu.Ft. Refrigerator
- Brushed Aluminum Refrigerator Front
- 10-Gal. Gas/Electric Water Heater with Direct-Spark Ignition\*
- One-Piece Compact Washer/Dryer Prep \*

- Sony® LCD TV and DVD Player in Living and Bedroom Areas\*
- Sony® 32" LCD TV in Bedroom
- TV on Power Lift in Living Area\*
- Fireplace in Living Area\*
- AM/FM Dash Radio with MP3 Adapter and CD Player
- Sony® Surround Sound System with Sub-woofer
- Rear View Color Monitor System with Audio
- Side View Cameras
- Roof Mounted Digital TV Antenna with Power Booster
- Satellite Dish Prep

## AIR CONDITIONING & HEATING

- Two 13.5M Penguin™ Heat Pump Central Air Conditioners
- Propane Furnace with Ducted Heat on 34'- 40' Floorplans
- Hydronic Zone Heating System with Continuous Hot Water on 43' Floorplans
- Dash Heater & High Output Air Conditioner
- Driver & Passenger Dash Overhead Ventilation System
- Propane Leak Detector
- Wall Mounted Sensors for Heating and Air Conditioning

## OPTIONS

### AIR CONDITIONING AND HEATING

- Two 15M Penguin™ Heat Pump Air Conditioners in Place of Standard
- Hydronic Zone Propane Heating System\*
- Three 15M Penguin Heat Pump Air Conditioner and Energy Management System\*

### APPLIANCES & ACCESSORIES

- Norcold® 12-Cu.Ft. Four-Door Refrigerator with Icemaker\*
- Maytag® Residential Refrigerator with Icemaker and Water Dispenser w/2000 Watt Pure Sine
- Inverter and 2 Extra Batteries
- Maytag® All Electric Refrigerator, 2-Burner Cooktop, 4 Extra Batteries and 2800-Watt Pure Sine Inverter

- GE® All Electric Refrigerator, 2-Burner Cooktop, 4 Batteries and 2800-Watt Pure Sine Inverter with Hydronic Diesel Heat
- Dyson Hand Held Vacuum
- One-Piece Washer/Dryer \*
- Whirlpool® 2-Piece Washer/Dryer\*
- Sirius Satellite Radio Capability (Does not include monthly subscription)
- Sony® 32" LCD TV in Front Overhead\*
- Sony® 46" LED TV on Power Lift Behind Door Side Sofa

- External Entertainment Center in Sidewall with Sony® 40" LCD TV\*
- External Entertainment Center in Storage Compartment with Sony® 32" LCD TV\*
- Automatic Satellite without Receiver

## CABINETS & FURNITURE

- Empire Maple Cabinets with Mitered Designer Glazed Doors
- Concealed Hinges on Cabinet Doors
- Solid Surface Countertop in Kitchen with Undermounted Acrylic Sink and Flush Sink Covers
- Solid Surface Countertop in Bathroom with Integrated Sink
- Solid Surface Countertops on Nightstands and Chest of Drawers
- Adjustable Pull Out Pantry Shelves\*
- Residential Style Full Extension Ball Bearing Drawer Guides
- Flexsteel® Ultralux Leather Furniture
- Flexsteel® Ultralux Leather Driver/Passenger Seats with 6-Way Power, Power Lumbar and Ergo-Flex Arms
- King Bed with Quilted Bedspread and Accent Pillow
- Built-In Booth Dinette with Drawers\*

## ELECTRICAL FEATURES

- 8.0-kW Cummins Onan® Diesel Quiet Series Generator
- 50-Amp Electrical Service with Flexible Cord
- Four 6-Volt House Batteries on Pull Out Tray

- In-Motion Satellite without Receiver
- High Definition Wiring
- Side View Cameras
- Preprogrammed Universal Remote Control
- Dash Radio/CD Player with Portable Tom Tom® Navigation System and MP3 Adapter
- Central Vacuum with Deluxe Tool Kit
- 11" Flip Down LCD TV/DVD and Headphones at Each Bunk Bed \*

## CABINETS & FURNITURE

- Queen Bed
- Sienna Maple Cabinets with Glazed Doors
- Manhattan Maple Cabinets with Glazed Doors
- Verona Maple Cabinets with Glazed Doors

- Battery Disconnect Switch
- 110-Volt Exterior Receptacle
- 5-Watt Solar Panel
- 2000-Watt Inverter
- Emergency Start Switch
- Door Side Exterior Security Light
- Midship Side Turn Signals
- Halogen Lights Recessed in Ceiling and Overhead Cabinets
- Slideout Information Voice Module
- Manually Operated Hold-To-Run Slideout Switch
- ICC Light Flasher Switch
- 12-Volt Auxiliary Receptacle on Dashboard
- Exterior TV Jack
- Interior Courtesy Lights

## PLUMBING & BATH FEATURES

- Demand Water System with SHURflo® Pump
- Sewage Holding Tank Rinse
- Water Heater Bypass System\*
- Thetford™ Aqua Magic Plus China Stool\*
- Monitor Panel
- Monoplex Water Pump Switch System
- Fiberglass Shower with Glass Door
- Water Filter with Drink Dispenser at Kitchen Sink
- Water Filter for Entire Unit

## WINDOWS, AWNINGS & VENTS

- Double-Pane Tinted Safety Glass Windows
- Fan-Tastic® Vent with Rain Sensor in Kitchen and Bathroom
- Skylight in Bathroom\*
- Dometic® 9000 Plus Side Awning with Aluminum Weather Shield
- Dometic® Oasis Manual Front Entrance Door Awning
- Dometic® Slideout Awning Covers
- One-Piece Tinted Windshield

## INTERIOR FEATURES

- Padded Vinyl Ceiling with Feature Panels
- Day/Night Pleated Window Shades and Lambrequins
- Mini Blinds in Bathroom
- Porcelain Tile Floor in Kitchen, Bathroom and Living Area
- Carpeting in Living Room and Bedroom
- Day/Night Privacy Shades on Driver/Passenger Side Windows
- Power Sun Shades and Manual Night Shades for Windshield

## EXTERIOR FEATURES

- Full-Paint Masterpiece Finish™ with Front Protective Film
- One-Piece Bonded Windshield

- Convex Exterior Mirrors with Remote Control, Defrost and Turn Signals
- Entrance Door with Automatic Double Step
- Power Flush Stepwell Cover
- Lighted Exterior Storage Compartments with Cargo Liner, Controlled by Interior Master Switch
- Rear Hitch for Towing Car with Two Extra 14-Gauge Wires
- Assist Handle at Entrance Door
- Mud Flaps
- Rear Protective Full-Width Tow Guard
- Rear Ladder
- Undercoating

## CONSTRUCTION FEATURES

- BriteTEK™ Roof with Walkable Decking
- Gel Coated Fiberglass Exterior Sides
- Gel Coated Fiberglass Front and Rear Caps
- Aluminum Frame Sidewalls and Roof Construction, 16" on Center
- 5/8" Foam Insulation Laminated in Sidewalls and Ceiling
- 5/8" Foam Insulation Laminated in Sidewalls and Ceiling

## CONSTRUCTION FEATURES

- One-Piece Molded Fiberglass Roof
- Mechanical Lock Arms on Four Slideout Rooms
- Power Baggage Door Locks, Keyless Entrance Door with Touch Pad and Door Bell

## PLUMBING & BATH FEATURES

- 110-Volt Heat Pads for Holding Tanks
- Bathtub\*

## WINDOWS, AWNINGS, & VENTS

- Dometic® 9000 Window Awning
- Dometic® Weather Pro Side Awning and Oasis Power Front Entrance Door Awning
- Kitchen Window

## VENTANA LE CHASSIS SPECIFICATIONS

Floorplan	Engine HP	Axle Ratio	Fuel Cap.	Wheelbase	Front GAWR*	Rear GAWR*	Tag GAWR*	GVWR*	GCWR*	App. UVW	App. NCC
3433	340	4.78	100 gal.	206"	12,000 lb.	19,000 lb.	0	31,000 lb.	33,000 lb.	25,000 lb.	6,000 lb.
3434	340	4.78	100 gal.	206"	12,000 lb.	19,000 lb.	0	31,000 lb.	33,000 lb.	25,100 lb.	5,900 lb.
3634	340	4.78	100 gal.	228"	12,000 lb.	19,000 lb.	0	31,000 lb.	33,000 lb.	24,800 lb.	6,200 lb.
3843	340	4.78	100 gal.	252"	12,000 lb.	19,000 lb.	0	31,000 lb.	33,000 lb.	25,600 lb.	5,400 lb.
3862	340	4.78	100 gal.	252"	12,000 lb.	19,000 lb.	0	31,000 lb.	33,000 lb.	25,000 lb.	6,000 lb.

## VENTANA CHASSIS SPECIFICATIONS

Floorplan	Engine HP	Axle Ratio	Fuel Cap.	Wheelbase	Front GAWR*	Rear GAWR*	Tag GAWR*	GVWR*	GCWR*	App. UVW	App. NCC
3433	360	4.78	100 gal.	206"	12,000 lb.	20,000 lb.	0	32,000 lb.	42,000 lb.	25,700 lb.	6,300 lb.
3434	360	4.78	100 gal.	206"	12,000 lb.	20,000 lb.	0	32,000 lb.	42,000 lb.	25,600 lb.	6,400 lb.
3634	360	4.78	100 gal.	228"	12,000 lb.	20,000 lb.	0	32,000 lb.	42,000 lb.	25,700 lb.	6,300 lb.
4018	380	4.63	100 gal.	245+TAG	14,000 lb.	20,000 lb.	10,000 lb.	44,000 lb.	54,000 lb.	30,600 lb.	13,400 lb.
4038	380	4.63	100 gal.	245+TAG	14,000 lb.	20,000 lb.	10,000 lb.	44,000 lb.	54,000 lb.	30,500 lb.	13,500 lb.
4324	380	4.63	100 gal.	269+TAG	14,000 lb.	20,000 lb.	10,000 lb.	44,000 lb.	54,000 lb.	31,600 lb.	12,400 lb.
4337	380	4.63	100 gal.	269+TAG	14,000 lb.	20,000 lb.	10,000 lb.	44,000 lb.	54,000 lb.	32,000 lb.	12,000 lb.
4346	380	4.63	100 gal.	269+TAG	14,000 lb.	20,000 lb.	10,000 lb.	44,000 lb.	54,000 lb.	32,500 lb.	11,500 lb.

\*Check with dealership on floor plan availability and complete listing of features.

# Newmar.

Where the finest names in quality and performance are along for the ride.

To assure that you experience only the best in comfort, control and unsurpassed convenience in our incomparable family of Luxury Coaches, Newmar partners with the most prestigious names in mobile lifestyle, entertainment and technology. These brands are leaders in their fields—and legends in providing customers with new, unsurpassed levels of quality and reliability.

Best in class performance from names you can trust. At Newmar, that's our difference. And our promise.



Mahlon Miller, Newmar founder, and Matthew Miller, Newmar president, lifelong motor coach enthusiasts

# Gather.

Where the Newmar owners are.

The Newmar Kountry Klub is an exclusive club for owners of fine Newmar products that offers many advantages and benefits to its members. Learn more at: [www.newmarkountryklub.com](http://www.newmarkountryklub.com)

# Trust.

The strongest possible foundation for a motor coach.

According to Newmar president Matthew Miller, "Customers say they're loyal to us because they trust us to stand behind our products, from support, parts and service to paying our warranties. It feels good to own a coach that has all of that behind it."

How do we sustain this high level of service? At Newmar, there's a Miller way of doing things. These principles guide us every day. Courtesy. Integrity. And reliability. So when you buy from Newmar, you know that every single person who touches your coach or talks with you has your back. Period.

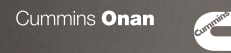


WHEN YOU KNOW THE DIFFERENCE

## CUMMINS ONAN · Performance You Rely On™

An innovator in standby and mobile power generation for more than 80 years, Cummins Onan generators are built by Cummins Power Generation, a globally recognized name in the design and manufacture of power generation products and services.

[www.cumminsonan.com](http://www.cumminsonan.com)



## FREIGHTLINER CUSTOM CHASSIS · Driven by You

A subsidiary of Daimler Trucks North America, Freightliner Custom Chassis Corporation manufactures premium chassis that have become renowned for their exceptional ride and handling characteristics, tight turning radius and extraordinary dependability.

[www.freightlinerchassis.com](http://www.freightlinerchassis.com)



## SONY · make.believe™

One of the most comprehensive entertainment and technology companies in the world, Sony Corporation is a leading manufacturer of audio, video, communications and information technology products for consumers and professionals alike.

[www.sony.com](http://www.sony.com)



## SPARTAN CHASSIS · The Premier Foundation

Spartan Chassis is a world class leader in the design, engineering and flexible production of chassis and components that consistently deliver superior performance, exceptional safety ratings and technological innovations.

[www.spartanchassis.com](http://www.spartanchassis.com)



### **NEWMAR EXPRESS LIMITED WARRANTY**

Every Ventana and Ventana LE Diesel Pusher is backed by Newmar's one-year limited warranty/unlimited miles. Ask your Newmar dealer for details.

### **LIMITED FIVE-YEAR STRUCTURAL WARRANTY**

If any part of your Newmar recreational vehicle superstructure (which is the steel/aluminum structure of the sidewall, roof or frame) fails to perform properly within five years from the date of purchase because of faulty workmanship or material supplied by Newmar, it will be repaired without charge for either parts or labor by Newmar. This structural warranty is available only to the original purchaser and is non-transferable.

Some features in our literature are optional. Colors and finishes are photographic representations. The actual materials may look different. Prices, specifications and floorplans are subject to change at Newmar's discretion, without prior notice or obligation. Please see your dealer for actual samples and specifications.



WHEN YOU KNOW THE DIFFERENCE™

#### **NEWMAR CORPORATION**

355 N DELAWARE ST  
PO BOX 30  
NAPPANEE IN 46550-0030  
574-773-7791 Fax 574-773-2895

[www.newmarcorp.com](http://www.newmarcorp.com)