

# VACATIONER

HOLIDAY RAMBLER • 2013



CLASS A GASOLINE



HOLIDAY RAMBLER



## KEY FEATURES

### RIDE AND DRIVE

- › 362 horsepower, 457 lbs/ft torque Ford Triton V10 engine.
- › Ford chassis with standard one-touch automatic hydraulic leveling system
- › Ergonomically designed cockpit for unmatched visibility, reach and leg room.

### INTERIOR

- › LCD TVs standard in the living area and optional in bedroom, DVD player.
- › 3-burner cooktop, double door refrigerator, 30" space saver convection microwave, solid surface countertops with stainless steel sink.
- › Full bath with residential style glass-enclosed shower.
- › Queen bed with decorative headboard.
- › Optional stackable washer and dryer in select floor plans.
- › Dual 13.5M BTU air conditioners on select floorplans and optional dual 15M BTU with heat pumps.

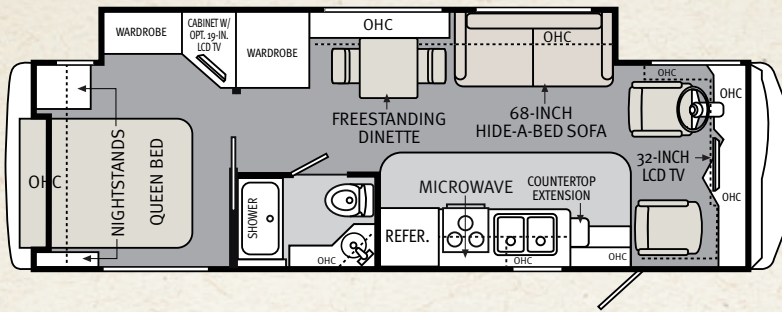
### EXTERIOR

- › Service/utility compartment with hot and cold exterior shower in select floorplans. 4-way fresh water valve.
- › Side swing aluminum storage doors with seamless rotocast pass through storage.
- › Deluxe full body 4-color paint, chrome accents and mirrors. Film front protection mask for chip prevention.
- › Dual pane dark tinted windows. Awnings in metal wrap covers.
- › Optional exterior entertainment center.

Note: Colors depicted are a reasonable representation though they may not be an exact match of the actual colors due to variances in processing and production.

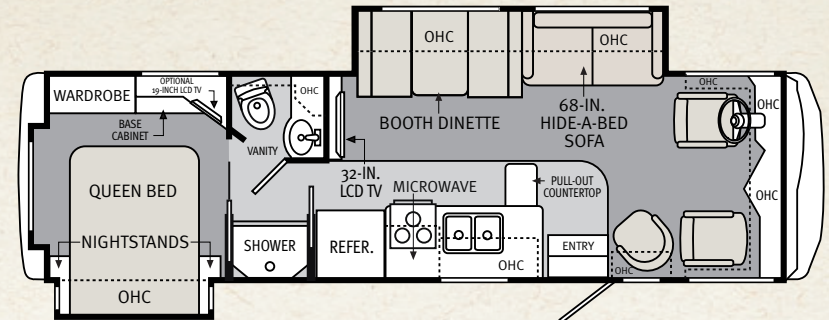
### 30SFS

B



- > Full-Wall Slide
- > Free standing dinette
- > Exterior TV option

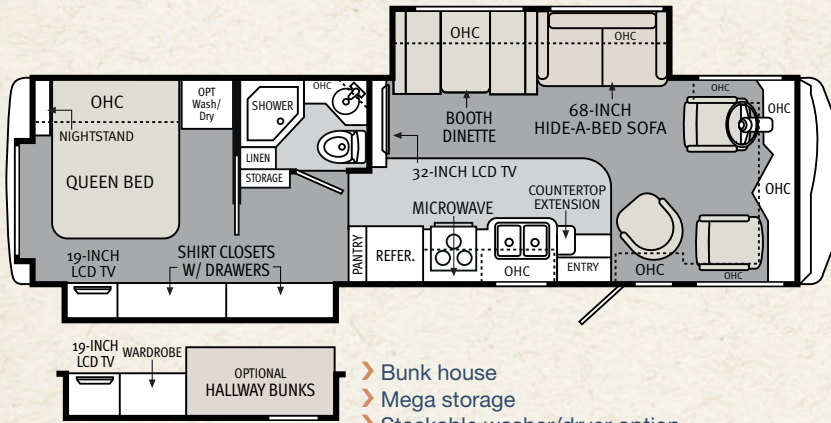
### 32WBD



- > Kitchen w/pull out workstation
- > Euro chair
- > Mega storage
- > Exterior TV option

### 34SBD

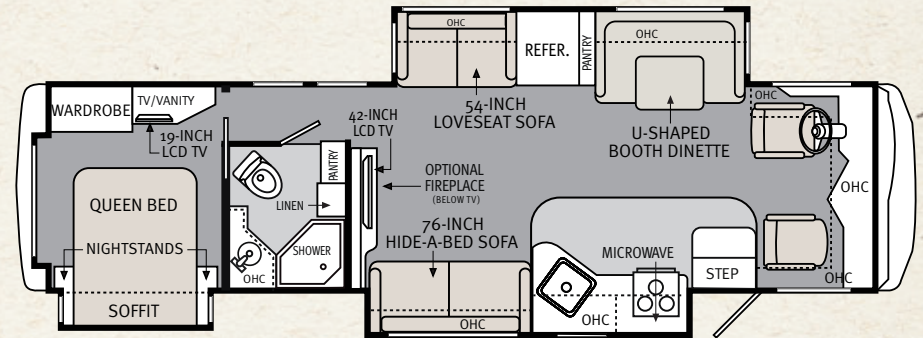
A



- > Bunk house
- > Mega storage
- > Stackable washer/dryer option
- > Exterior TV option

### 36SBT

C D



- > Large living room slide out
- > U-shaped booth dinette
- > Optional expandable sofa
- > Mid ship TV w/fireplace option

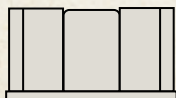
### FURNITURE OPTIONS

BOOTH DINETTE W/UPPER BUNK



A

DREAM DINETTE



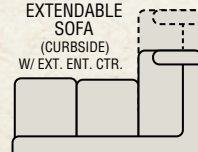
B

BOOTH DINETTE ENSEMBLE

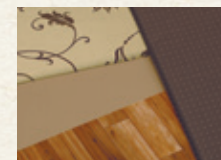


C

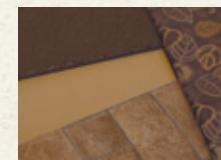
EXTENDABLE SOFA (CURBSIDE) W/ EXT. ENT. CTR.



D



WATERFORD



TWILIGHT



HILLSIDE CHERRY



FULTON CHERRY GLAZED

Due to continuous product improvements, please visit us online at [HolidayRambler.com](http://HolidayRambler.com) for the latest in standards, options, specifications and technical data.



BURGUNDY BROWN



DARK BRONZE CREAM



SILVER BLACK BURGUNDY



DOWNTOWN BROWN

WEIGHTS*	30SFS	32WBD	34SBD	36SBT
Weights (Ford Chassis)				
Gross Vehicle Weight Rating (lbs.)	18,000	22,000	22,000	22,000
Gross Combined Weight Rating (lbs.)	23,000	26,000	26,000	26,000
Front Gross Axle Weight Rating (lbs.)	7,000	8,000	8,000	8,000
Rear Gross Axle Weight Rating (lbs.)	12,000	15,000	15,000	15,000
MEASUREMENTS				
Wheelbase	190"	208"	232"	242"
Overall Length without Ladder	30'-11"	33'-5"	35'-5"	36' - 10"
Overall Height with A/C	12'-3"	12'-8"	12'-8"	12'-8"
Interior Height	80.5"	80.5"	80.5"	80.5"
Interior Width	96"	96"	96"	96"
Exterior Width	100.5	100.5	100.5	100.5
TANK CAPACITIES**				
Water Heater (gal.)	10	10	10	10
Grey Tank (gal.)	40	40	40	40
Black Tank (gal.)	40	40	40	48
Fresh Tank (gal.)	60	60	60	60
LP Tank*** (lbs. / gal.) {Tank size 20.2 gal usable 16 gal}	68 / 16	68 / 16	68 / 16	68 / 16
Fuel - Ford	80	80	80	80

\*Towing capacity is limited by GCWR; your vehicle's towing capacity is the difference between the GCWR and the actual vehicle weight, including all water, fuel, passengers and cargo. Your towed vehicle should be equipped with auxiliary brakes if the weight of the towed vehicle exceeds 1,000 lbs. Consult your owner's manual for further towing information.

\*\*All tank capacities are estimated based upon calculations provided by the tank manufacturers and represent approximate capacities. The actual "usable capacity" may be greater or less than the estimated capacities based upon fabrication and installation of the tanks.

## MORE TO STORE.

Vacationer features a large, pass-through storage bay with side-hinged baggage doors.



## AROUND THE CLOCK SERVICE AND SUPPORT.

When you take delivery of your new recreational vehicle, it's just the beginning of our exclusive around-the clock Owner Advantage Program™.

We offer an extensive support program that provides complete roadside assistance and special motor club benefits that follow you wherever your travels take you. We've teamed up with the most trusted RV emergency road service company in the country to give you immediate access to fast, dependable service when and where you need it.

Add our toll-free service appointment assistance, plus a technical assistance hotline, and you have the security of 24-hour, full-time support at your fingertips.

## WARRANTY INFORMATION:

Enjoy your next RV adventure with the peace of mind that comes with a 12 month/24,000 mile basic limited warranty; a 5 year/50,000 mile limited warranty on aluminum or steel frame structure; and a 3 year/50,000 mile limited warranty on the Chassis. Review your coach's limited warranty in full for complete terms and conditions.

## SERVICE AND SUPPORT:

24/7 service and support – Toll-free 877-211-8135

For more information on standards and options, please go to [www.holidayrambler.com](http://www.holidayrambler.com)

Monaco RV  
606 Nelson's Parkway, Wakarusa IN 46573  
877 252 4666