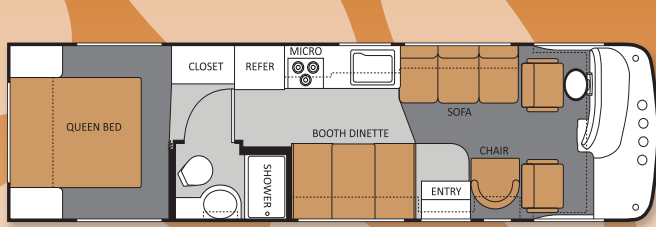
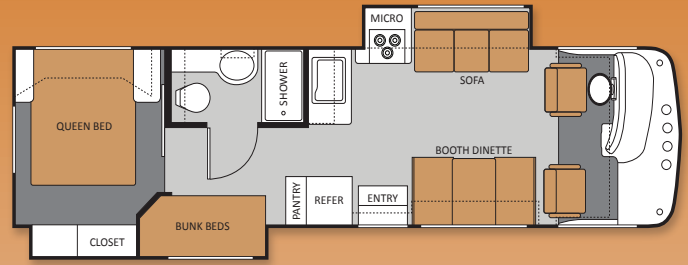


WINDSPORT

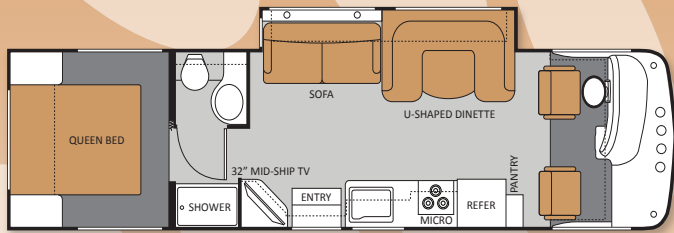
Class A Motorhomes



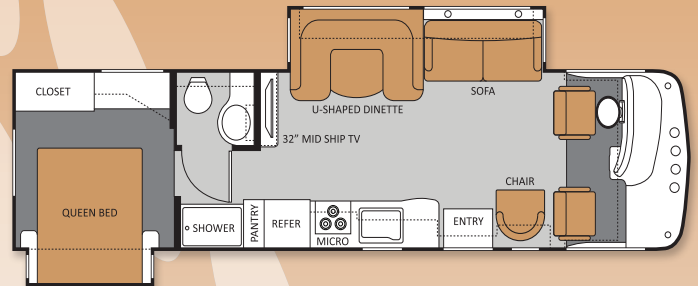
30Q MEGA STORAGE



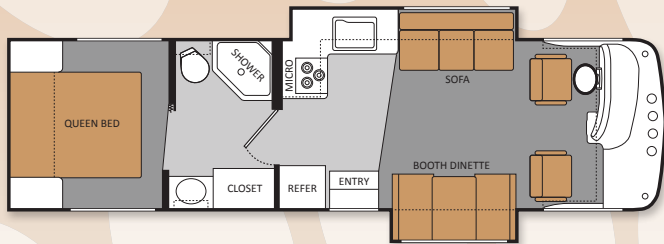
31G



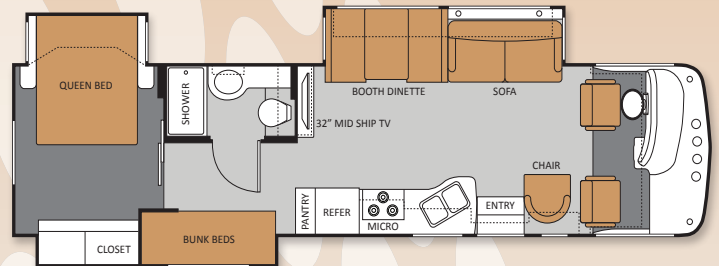
31J MEGA STORAGE



32A MEGA STORAGE



32D MEGA STORAGE



34T

Specifications

	Model	30Q	31G	31J	32A	32D	34T
WEIGHT	Ford Chassis with 6.8L Triton Engine	V-10	V-10	V-10	V-10	V-10	V-10
	Gross Vehicle (GVWR)	16,000	18,000	18,000	18,000	18,000	22,000
	Gross Combined (GCWR)	26,000	26,000	26,000	26,000	26,000	26,000
MEASUREMENTS	Exterior Length (without ladder)	31'11"	32'8"	32'8"	33'	33'1"	35'5"
	Exterior Height (with air conditioning)	11'7"	11'7"	11'7"	11'7"	11'7"	11'7"
	Exterior Width (without mirrors)	99"	99"	99"	99"	99"	99"
	Interior Height	80"	80"	80"	80"	80"	80"
	Awning Size (manual/electric)	16'/16'	12'/12'	16'/16'	18'/18'	16'/16'	14'6"/14'
CAPACITIES	Fuel (gallons)	80	80	80	80	80	80
	LPG (pounds)	63.5	88	88	88	88	88
	Gray/Waste Water (gallons)	44/32	44/44	22F-44R/44	44/32	44/32	44/32
	Fresh Water (gallons)	50	50	50	50	50	49
	Water Heater (gallons)	6	6	6	6	6	6
	Exterior Storage Capacity (cubic feet)	128	63	125	62	134	55

Windsport Standard & Optional Features

BODY CONSTRUCTION/EXTERIOR

Fully welded tubular steel floor system	S
Fully welded tubular aluminum roof and sidewall cage construction	S
Vacu-Bond laminated roof, walls and floors with block foam insulation	S
One-piece fiberglass front and rear caps	S
One-piece windshield	S
Slick fiberglass exterior	S
Exterior graphics packages	S
Exterior graphics/partial paint packages	O
Full-body paint packages	O
Exterior rear Mega Storage compartment (Select Models)	S
Seamless roto-cast storage compartments	S
Side hinged flush mount radius luggage doors (Select Doors)	S
Premium one-piece TPO roof	S
Crown roof	S
Manual patio awning	S
Electric patio awning	O
Roof ladder	S
Fully automatic hydraulic leveling jacks (Std. 32A & 34T)	O
Rubber tread entry steps	S
Automatic electric entry step	S
Outside shower	O
Dual Pane Windows	O

AUTOMOTIVE/COCKPIT

AM/FM radio with large buttons, CD player and weather band tuner	S
Dash fans	S
Generator start switch on dash	S
Ceiling mounted dome light with dash switch	S

3-point seat belts for driver and passenger	S
Leatherette driver and passenger captain's chairs	S
Six-way power driver seat	O
Back-up camera with audio	O
Side Vision Cameras (Requires back-up camera)	O
Deluxe exterior mirrors	S
Heated, remote exterior mirrors	O
Fog lights	S
19.5" tires	S
Stainless Steel wheel liners	S
5,000-lb. trailer hitch with 7-way connector	S

INTERIOR

Residential linoleum in living room, galley bath & entry way	S
Residential linoleum in bedroom	O
Metal entry grab handle	S
13,500 BTU front roof air conditioner	S
13,500 BTU rear roof air conditioner (Requires 5.5-KW Generator)	O
Ceiling ducted air conditioning	S
Cherry cabinetry	S
Glazed maple cabinetry	O
Raised panel doors on wall cabinets	S
Hardware with oil rubbed bronze finish	S
Incandescent ceiling lighting	S
Vinyl ceiling	S
Fabric barrel chair (30Q only)	S
Leatherette Euro recliner with ottoman (32A & 34T only)	S
Fabric jackknife sofa (30Q & 31G only)	S
Leatherette jackknife sofa (30Q only)	O

Fabric hide-a-bed sofa (N/A 30Q & 31G) (Optional 31J)	S
Leatherette hide-a-bed sofa with air mattress (N/A 30Q) (Std 31J)	O
Leatherette U-Shape dinette (32A & 31J only)	S
Booth dinette with cup holders (N/A 32A & 31J)	S
Night shades throughout	S

GALLEY

Double door refrigerator	S
3-burner high-output gas cooktop with oven	S
Microwave oven	S
3-burner high-output gas cooktop with convection microwave oven	O
Laminate countertop	S
Large double bowl sink with single lever kitchen faucet	S
Flip-up countertop extension (N/A 30Q & 31J)	S
Roll-out countertop extension (32A only)	S
Pantry (N/A 30Q & 32D)	S
Full extension metal drawer guides	S
Fantastic® fan	O

ENTERTAINMENT & ACCESSORIES

26" television in front overhead (N/A 31J) (Opt. 32A & 34T)	S
32" LCD television in living room entertainment center (31J, 32A & 34T only)	S
19" LCD television in bedroom	O
Two 13" LCD Televisions with DVD Player in bunk beds (31G & 34T only)	O
Home theater system with DVD player and radio tuner	O
HD/DSS satellite prep	S
Cable television prep	S

BEDROOM/BATHROOM

Queen-size bed	S
Bedsread and pillow shams	S
Attractive headboard with sconce wall lighting	S
Bunk beds in hallway slide room (31G & 34T only)	S
Electric overhead hide-away bunk (31J only)	O
Lighted wardrobe in bedroom	S
China bowl toilet	S
Neo-angled shower (32D only)	S
Shower with glass door	S

SAFETY & CONVENIENCE

Entry door with dead bolt lock	S
Systems Control Center	S
Smoke, LPG and carbon monoxide detectors	S
Fire extinguisher	S
Passenger seat belts in select areas	S
Valve stem extenders on rear tires	O

ELECTRICAL & PLUMBING

Onan® Microquiet™ 4.0 gas generator (4000-watt)	S
Onan® Marquis Gold 5.5 gas generator (5500-watt); 50-amp service with marine type detachable power cord and 6-gallon gas/electric water heater	O
Battery disconnect switch	S
Emergency start switch	S
Second auxiliary battery	O
30-amp service with marine type detachable power cord	S
6-gallon gas water heater	S
Water heater bypass system	S
Holding tanks with heat pads	O



WINDSPORT

VEHICLE LOADING: Every effort has been made to provide the greatest number of options for the recreation vehicle owner. Along with these choices comes the responsibility to manage the loads that are imposed by the choices so that they remain within the manufacturer's specified chassis weight limits. Do not overload the recreation vehicle.

IMPORTANT: Towing capacity may vary by chassis model, floorplan, options and loading of the vehicle. This may result in a towing capacity which is less than the maximum capacity of the hitch. Do not exceed the vehicle's Gross Combined Weight Rating

(GCWR), or the hitch rating. A separate functioning brake system is required for any towed vehicle or trailer weighing more than 1,000 lbs. (450 KG) when fully loaded. Liquid capacities and weights are approximations only.

WARNING: This information is intended as a guide only. Weights of individual vehicles may vary. Consult your owner's manual and weight sticker affixed to each vehicle for complete loading, weighing, and towing instructions.

WARRANTY: The vehicles are provided with a twelve (12) month, 15,000-mile limited warranty. Chassis,

component part and appliance manufacturers may issue limited warranties covering those portions of the vehicle not covered by the limited warranties issued by Four Winds International. To learn what portions of the vehicle are excluded from coverage under the limited warranties issued by Four Winds International, please contact your selling dealership or Four Winds International directly, or review the warranty packet inside the vehicle.

Product information, specifications, and photography in this brochure were as accurate as possible at time of printing. Photographs may contain some

features that are optional on your vehicle. Since we continually strive to improve our products, actual products may differ. The manufacturer reserves the right, at any time, to make changes in product design, materials, component specifications and pricing, without notice. All capacities are approximate and dimensions are nominal. Some features or options may be different or unavailable in Canada.