

ZEPHYR®
2011



TIFFIN MOTORHOMES

WHEREVER YOU GO, WE GO.



2011 Zephyr® with Maroon Coral Exterior



Zephyr

As good as great gets. Your destination just got a lot more luxurious. Built with the best of the best of everything we know, the 2011 Zephyr is our moving masterpiece: more than 30 years of knowledge, innovation, and skill merged into one magnificent 45-foot solid structured coach. Tiffin's top-of-the-line model is built on the superbly-engineered Spartan K2 chassis and includes more features than we've ever incorporated into a motor home. Fit and finish are first rate. Materials everywhere are beautiful to the eye and premium to the touch – including hand-crafted solid wood cabinets and sumptuous countertops in the kitchen and bath. And with the vast 165 cubic feet of basement storage and the cavernous bath and a half floor plan, you'll have room to bring more than a few luxuries of your own. On the road, driving it is a joy. Parked, it really is like a fine residence.



2011 ZEPHYR / **COCKPIT**

There's no such thing as too much luxury. Our designers have anticipated every convenience – from the lighted step well to the color rear vision monitor system. Engineered with a Spartan K2 chassis and 500 HP Cummins ISM 10.8-liter engine, the Zephyr's smooth handling is enhanced with independent front suspension and two-stage engine brake, giving even new drivers confidence behind the wheel. A sleeker, wraparound dash reduces reflections and eases access to controls, navigation, and rear/side-view color monitors. Top to bottom, standard finishes are first class, from the interior full-length porcelain tile floor to the exterior premium full body paint in six options. With all this plush comfort, the addition of Winegard In-motion Satellite, home theater system with DVD, and four flat screen TVs, you may never want to leave.





Triple Crown Interior with Glazed Honey Cabinets
45 QBZ Floor Plan



Triple Crown Interior with Glazed Honey Cabinets
45 QBZ Floor Plan



2011 ZEPHYR / **LIVING AREAS**

Make your house envious. No upgrade has been overlooked in the spacious interior. A designer kitchen lets you entertain in style, assisted by an Expand-an-island for extra counter space, residential refrigerator, and optional dishwasher. With the custom-made cabinetry, full open basement, and a new concealed safe, secure storage will never be an issue. Nor will getting a good night's rest. The luxurious master bedroom suite comes standard with a king-sized bed and optional memory foam mattress. Guests will be comfortable, too, snoozing on the two sleeper sofas in the living area. And everyone will appreciate the quiet A/C system with dehumidifier that keeps it cool, no matter where you roam. On-the-go cleanup is a breeze, courtesy of a top-of-the-line stacked washer/dryer and new VacPan dustpan that draws debris into the central vacuum system with the touch of a button.



INTERIOR SPECIFICATIONS



Cherry Wood



Natural Cherry



Glazed Cordovan



Glazed Cherry



Glazed Honey



White Chocolate (Bath)
AVAILABLE ONLY
WITH GLAZED CHERRY, GLAZED
HONEY, OR GLAZED CORDOVAN

Chinchilla

BEDROOM
MAIN & ACCENT



LIVING AREA
SOFA & ACCENT



DINETTE



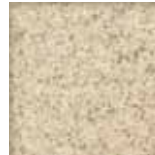
CARPET



TILE



COUNTERTOP



Noche

BEDROOM
MAIN & ACCENT



LIVING AREA
SOFA & ACCENT



DINETTE



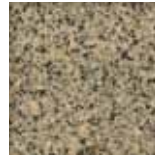
CARPET



TILE



COUNTERTOP



Triple Crown
FABRICS BY
RALPH LAUREN

BEDROOM
MAIN & ACCENT



LIVING AREA
SOFA & ACCENT



DINETTE



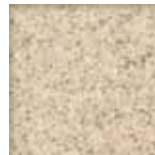
CARPET



TILE



COUNTERTOP



BEDROOM SUITE FABRIC



Chinchilla



Noche



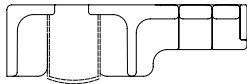
Triple Crown
FABRICS BY RALPH LAUREN

Zephyr cabinet doors are made of solid wood. Cabinet finishes are available in combination with any fabric scheme. Options may not be available for every model. Specifications and standard or optional equipment subject to change without notice or obligation.

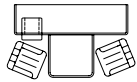
FLOOR PLAN

45 QBZ

OPTIONS AVAILABLE



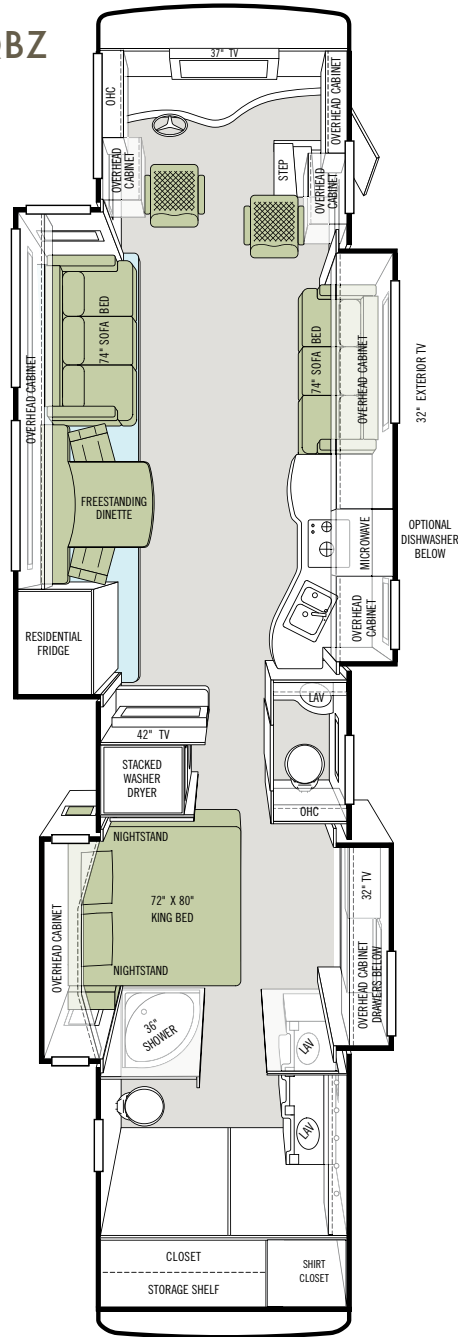
ULTRA LEATHER U-SHAPED DINETTE & SLEEPER SOFA COMBINATION



FREESTANDING DINETTE WITH COMPUTER WORKSTATION



LIFT RECLINERS



FULL BODY PAINT SCHEMES



Gold Coral



Maroon Coral



Nasa



Silver Sand



Sunlit Sand



Rocky Mountain Brown

Specifications and standard or optional equipment are subject to change without notice or obligation. For a complete list of specifications and options, please visit tiffinmotorhomes.com

Automotive

STANDARD EQUIPMENT ON ALL MODELS:

- 500 HP @ 1,900-2,000 RPM Cummins ISM 10.8-liter Engine
- Allison 4000 MH Transmission
- Heavy Duty Rear Hitch with 15,000 Lb. Towing Capacity
- Six Aluminum Wheels
- Independent Front Suspension
- Two-stage Engine Brake
- Full Air Brake
- VIP Smart Wheel
- Hadley SLS – Automatic Air Leveling System
- HWH – Hydraulic Leveling System
- Fog Lights

SPARTAN K2 CHASSIS:

Torque (Lb. - Ft. Max. Net)	1550 @ 1,300	GCWR	61,600 Lb.
GVWR	46,600 Lb.	Fuel Tank (Gallons)	150
GAWR - Front	16,600 Lb.	Wheel Base	316" (292" From Front Axle to Drive Axle)
GAWR - Rear	20,000 Lb.	Tire Size	315 / 80R22.5
Tag Axle	10,000 Lb.	Alternator Amps	270

OVERALL:

Overall Length (Approximate)	44' 9"	Trailer Hitch Capacity	15,000 Lb.
Overall Height with Roof Air (Maximum)	12' 10"	Fresh Water (Gallons)	90
Interior Height	84"	Black Water (Gallons)	50
Overall Width	101"	Grey Water (Gallons)	70
Interior Width	96"	LPG Tank (Gallons; limited to 80% capacity)	24.4
Basement Storage (Cubic Feet - Approximate)	167.5	Minimum Garage Height	13'

Structural

STANDARD EQUIPMENT ON ALL MODELS:

- Steel Cockpit Overhead Support Structure
- Seamless One-piece Gel-coat Fiberglass Molded Roof Cap
- One-piece Molded Gel-coat Fiberglass Front & Rear Caps with Integrated Air Intake
- Gel-coat Fiberglass Outside Wall Panels
- Steel / Aluminum Laminated Side Walls, Floor & Roof
- ½" Laminated Floor Decking
- Insulated Roof Duct Laminated into Roof Construction
- Steel Basement Construction

Exterior

STANDARD EQUIPMENT ON ALL MODELS:

- One-piece Fiberglass Gel-coat Front & Rear Fenders with Integrated Storage
- Fiberglass Gel-coat Engine Access Door with Swing-up Hinges & Shocks
- One-piece Aluminum Face Swing-out Baggage Doors with Integrated Power Locks
- Pass-through Full Basement
- Slide-out Storage Tray (Slides Out Both Sides)
- 12,500 Onan® Generator
- Phone, 120 V & 12 V Outlets Inside Storage Compartment
- Auto Generator Start System
- Eight House Batteries
- Powered Pullout for Generator Access
- Three Low Profile Roof Air Conditioners with Heat Pumps
- Two 125 Watt Solar Panels
- Easy Hook-up Water Compartment with Built-in Hose Exits
- Multi-port Manifold System for Hot & Cold Water Lines
- Fiberglass Water Service Center Panel & Compartment
- Water Pump Switch Located at Galley, Lavatories & Water Service Compartment
- In-motion Winegard Satellite System
- One-piece Panoramic Windshield
- Black Tank Flush System
- Water Filter
- Power Garden Hose Reel
- Outside Shower
- Air Horn
- Recessed Docking Lights
- Basement & Outside Compartment Lights
- Porch Light
- Lighted Exterior Grab Handle
- Deadbolt Entrance Door Lock
- Keyless Entry System (Includes Exterior Compartment Doors)
- Custom Mud Flap
- Electric Power Cord Reel
- 32" Exterior TV
- Carefree Paramount Awning (Three Positions)
- Diamond Shield® Front Cap Protective Coating
- Aerodynamic Streamlined Appearance
- SeeLevel Tank Monitor
- Tank Monitor Pad Located at Dump Station
- Magnum Sine Wave Inverter

AVAILABLE OPTIONS:

- 2nd Slide-out Tray
- 2nd Carefree Paramount Awning (Patio Side Only)
- Basement Freezer

Driver's Compartment

STANDARD EQUIPMENT ON ALL MODELS:

- Contemporary Wrap-around Dash
- Backlight Lettering for Dash Controls
- Built-in Driver & Passenger Consoles with Control Switches
- Six-way Power Driver & Passenger Seats including Passenger Power Footrest
- Integrated Driver & Passenger Seat Belts
- Solid Surface Step Well with Recessed Lighting
- 37" TV Over Cockpit
- Computer Slide-out Tray in Dash with Lock-out Rails
- In-dash Stereo / Navigation System
- Storage Drawers with Built-in Beverage Tray
- Smart Wheel with Controls for ICC, Cruise & Windshield Wipers
- Adjustable Accelerator & Brake Pedals
- Power Steering
- Driver & Passenger Overhead Fans
- Driver & Passenger Map Lights
- Power Solar / Privacy Windshield Shade
- Driver / Passenger Side Power Windows & Power Solar / Privacy Shades
- Dual 12 V Outlets in Dash Area (Driver)
- Phone Jack 12 V Outlet (Passenger)
- Color Rear Vision Monitor System with Side-view Cameras
- Side-view Cameras Activated by Turn Signals
- Compass with Outside Temperature
- CB Radio with Antenna
- Satellite Radio (Requires Subscription)
- Cellular Phone Antenna
- 12 V Battery Power Disconnect
- Fire Extinguisher

INTERIOR SPECIFICATIONS

STANDARD EQUIPMENT ON ALL MODELS

GENERAL INTERIOR:

- Wall Mounted Thermostats
- 12 V Attic Fans with Hardwood Louvers & Wall Mounted Controls
- Cable TV Hook-up & Phone Jacks
- Solid Hardwood Raised Panel Doors
- Carpeted Cabinet Shelves
- Ball Bearing Drawer Slides
- In-motion Digital Satellite Dish
- Wallpaper Covering on Sidewalls
- Padded Soft Touch Vinyl Ceiling
- Power Solar / Privacy Shades
- Porcelain Tile Flooring Throughout Entire Coach
- Built-in Speakers with Matching Hardwood Louvers
- 3000 Watt Sine Wave Inverter
- Bullet Lights in Ceiling
- Ceiling Flush Mounted Multi-lighting System
- Wall Mounted Switches for Lights & Accessories
- Rope Lights Beneath Galley / Bedroom Vanity Area & in Window Valances
- 50 Amp Distribution
- 12 V Fuse Panel
- Ducted Return Air Conditioning System with Dehumidifier
- Energy Management System
- Air Driven Step Well Cover
- Battery Disconnect Switch
- Smoke Alarm
- GFI Outlets at Galley & Lavatories
- Lighted Interior Grab Handle
- Entertainment System
- Complete Cable Wiring Interfacing with Surround Sound & Satellite Receiver
- Hydronic Heating System with Continuous Hot Water
- Central Vacuum Cleaner System with VacPan

AVAILABLE OPTIONS:

- All Electric Coach

LIVING AREA / DINETTE:

- Freestanding Dinette with Built-in Storage Cabinets
- Decorative Ceiling Panel
- Home Theater System with DVD Player
- Cloth Magic Bed Sofa on Driver's Side
- Ultra Leather Magic Sofa Bed on Passenger's Side
- Decorative Wall & Dinette Lighting Package
- Carbon Monoxide Detector
- 42" Midsection TV in Entertainment Center

AVAILABLE OPTIONS:

- Cloth Magic Bed Sofa on Passenger's Side
- Ultra Leather Air-Coil Hide-A-Bed on Passenger's Side
- Cloth Air-Coil Hide-A-Bed on Passenger's Side
- Ultra Leather Magic Sofa Bed on Driver's Side
- Cloth U-shaped Dinette / Sleeper Sofa Combination
- Ultra Leather U-shaped Dinette / Sleeper Sofa Combination
- Freestanding Dinette with Computer Workstation
- Two Leather Lift Recliners on Driver's Side

KITCHEN:

- Solid Surface Countertops and Splash Guards
- Stainless Steel Refrigerator with Icemaker in Door
- Recessed Princess 2-burner Cooktop with Solid Surface Covers
- Integrated Solid Surface Galley Sink with Solid Surface Covers
- Expand-an-island
- Ceramic Tile Backsplash with Decorative Inlays
- Stainless Steel Convection Microwave with Exterior Venting
- Power Solar / Privacy Shades & Hardwood Valance
- Built-in Soap Dispenser

AVAILABLE OPTIONS:

- Drawer Type Dishwasher

BATH:

- Two Lavatories with Medicine Cabinets & Drawers
- Elongated Ceramic Toilet with Electric Flush
- Double Pyramid Lavatory Sinks with Soap Dispensers
- Cosmetic Lights over Lavatories
- Towel Holders, Robe Hook, & Lavatory Accessories Package
- Scrolled Glass Pocket Doors
- Curved Shower Enclosure Door
- Stacked Washer / Dryer
- Skylight in Shower with Sliding Cover
- Adjustable Shower Head on Slide Bar
- Solid Surface Shower Walls with Inlaid Tile

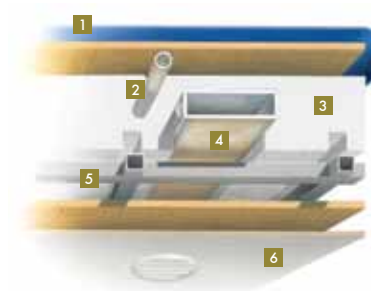
BEDROOM:

- 32" TV
- Select Comfort™ King Mattress (72" x 80") with Nightstands
- Shirt Closet with Drawers
- Under Bed Storage
- Ceiling Fan
- LPG Leak Detector
- Solar / Privacy Shades
- Pre-wired for DVD & Satellite Receiver
- Large Wardrobe Closet with Built-in Drawers, Sliding Hardwood/Mirror Doors & Automatic Light

AVAILABLE OPTIONS:

- Memory Foam King Mattress (72" x 80")
- Combo Washer / Dryer
- Security Safe

CONSTRUCTION SPECIFICATIONS



ROOF

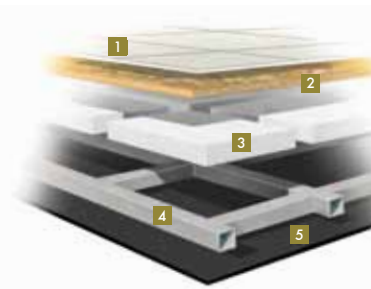
1. One-piece, moisture resistant molded fiberglass roof cap provides insulation and strength and prevents water intrusion
2. A/C Condensation Drainage System that runs internally through the roof insulation and down the sidewalls, redirecting water underneath the motor home
3. 5½" formed insulation
4. Quiet Air Cooling System with return air and foil-wrapped cooling exhaust ducts
5. Durable, tubular aluminum roof skeleton
6. Easy-to-clean soft touch vinyl ceiling panel



SIDEWALL

1. Gel-coat fiberglass outside wall panel
2. High-performance thermal insulation
3. Durable, yet lightweight, tubular aluminum wall skeleton
4. Decorative inside wall panel

All sidewalls are approximately 2" thick



FLOOR

1. Porcelain tile floor bonded to high-impact oriented strand board
2. High-level engineered oriented strand board
3. High-performance thermal insulation
4. Durable, tubular floor skeleton
5. Woven moisture barrier material



Start your journey by visiting our website. We'd love to hear from you, so give us a call, send us a postcard or stop by our office the next time you pass by Red Bay. Because remember, wherever you go, we go.

Safe travels,

Bob Tiffin
President/Founder



TIFFIN MOTORHOMES

WHEREVER YOU GO, WE GO.

105 2ND STREET NW, RED BAY, ALABAMA 35582

CALL 256.356.8661 FAX 256.356.8219

WHEREVER YOU GO, THERE WE ARE.

In a time when some companies have struggled, a manufacturer who stands behind the product they build has never been more important. We've never been prouder of the strength of our company, our warranty and service plan (still the best in the motor home industry), and most importantly, the trust we've built with a very special group of motor home owners. We understand the richness that travel brings to your life, and our family is so proud of the relationship we have with yours. You are the reason we do what we do and why we never stop working to build a better Tiffin experience for you.

HIT THE ROAD WITHOUT A CARE IN THE WORLD.

10-YEAR LIMITED UNITIZED CONSTRUCTION WARRANTY

We guarantee the structural integrity of the entire coach for 10 years (includes wall separation and inner frame weakness).

5-YEAR LIMITED LAMINATION WARRANTY

We guarantee against all exterior fiberglass delamination or wall separation for 5 years.

For parts and service call 256.356.0261

For more information on the Zephyr and our other motor homes visit tiffinmotorhomes.com

YOUR LOCAL TIFFIN DEALER:

PHAETON®, ALLEGRO®, ALLEGRO BREEZE®, ALLEGRO RED®, ALLEGRO BUS®, ZEPHYR®, ROUGHING IT SMOOTHLY®, OPEN ROAD® AND PUSHER® ARE REGISTERED TRADEMARKS OF TIFFIN MOTORHOMES, INC. ALL RIGHTS RESERVED.