



MOUNTAIN AIRE
THE NEW LEGEND

2011



WHEN YOU KNOW THE DIFFERENCE™

EPIC AMENITIES, WITHIN REACH

The 2011 Mountain Aire. It tells an extraordinary story of unyielding luxury and ease. Once available only to a rarefied few, this motor coach has rewritten motor coaching history – to include you.



— ♦ —
*Relax behind the wheel
with the easy handling of
Comfort Drive™ Steering and
optional portable TomTom®
Navigation System.*
— ♦ —

AFFORD EVERYTHING From a well-appointed kitchen,

complete with hand-glazed hardwood cabinets,

polished porcelain flooring and Mystera® countertops to a living area with elegance for all the senses: Flexsteel™ furniture, contemporary lighting, hardwood window accents and a fully-appointed entertainment center – you deserve it all.

Your Mountain Aire kitchen has stainless appliances, like the GE® microwave convection oven and optional residential refrigerator with icemaker and water dispenser.



—◆—
The 2011 Mountain Aire features roomy hardwood cabinets with concealed hinges, handcrafted by Amish artisans.
—◆—



You'll make neat work of dinner and enjoy the view with Mountain Aire's distinctive tile backsplash.



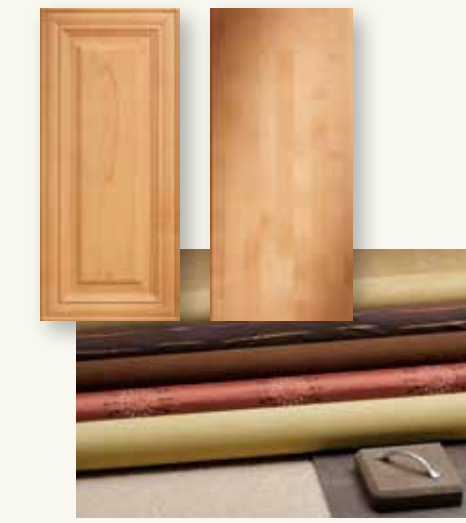


—◆—
 Sink into a luxurious
 mattress, complete with
 bolster, quilted bedspread
 and accent pillows as you
 enjoy your Sony® LCD TV.
 —◆—

DECOR AND EXTERIORS THAT DEFINE LUXURY

Mountain Aire's hardwood cabinet options pair well with any of the color combinations below. Raised-Panel Style doors are standard on Mountain Aire; Euro-Style doors are optional.

Windsor Beech Hardwood-Standard



Mondavi Maple Hardwood



Manhattan Glazed Maple Hardwood



Carmel Glazed Cherry Hardwood



—◆—
Sangria
 —◆—



—◆—
Pewter
 —◆—



—◆—
Sahara
 —◆—

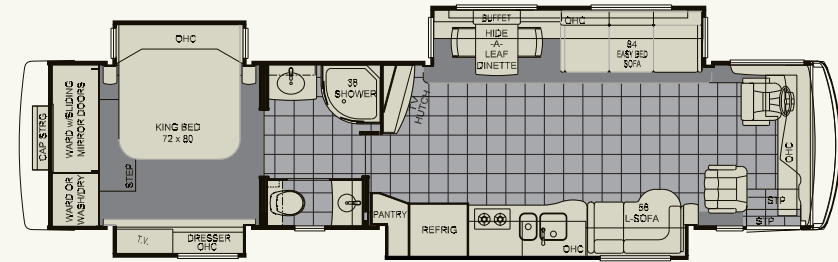


—◆—
Granite
 —◆—

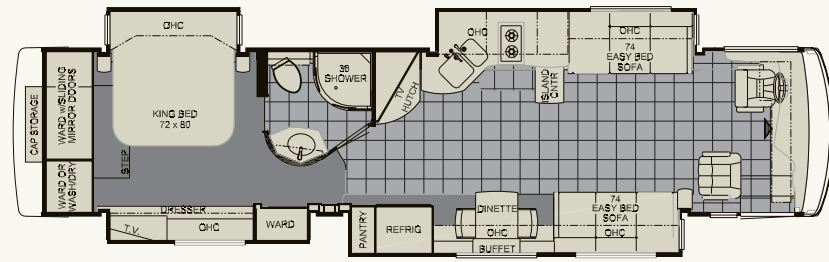
A MOUNTAIN AIRE FOR EVERY LIFESTYLE

Choose from six 2011 Mountain Aire floorplans. Then choose the length of your fine motor coach: 40 feet or 43 feet with diesel

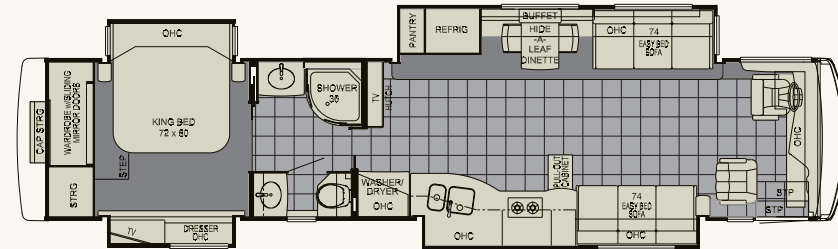
pusher power. And all at a surprising low sticker price. So the hardest decision to make is: which one?



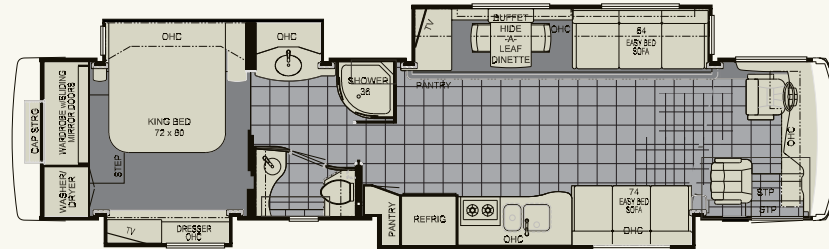
2011 Mountain Aire Diesel Pusher 4034



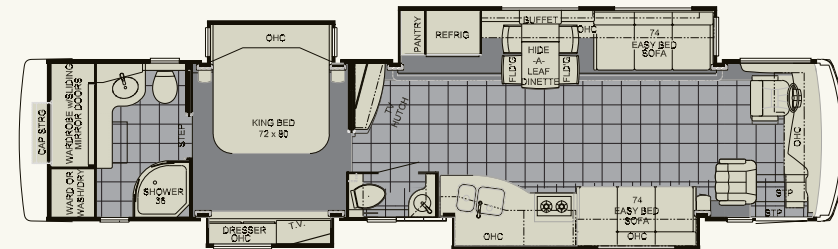
2011 Mountain Aire Diesel Pusher 4085



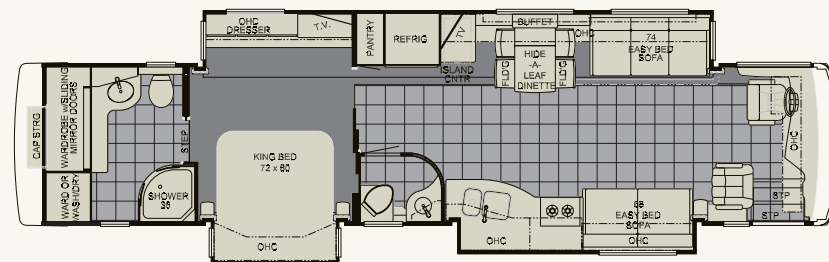
2011 Mountain Aire Diesel Pusher 4314



2011 Mountain Aire Diesel Pusher 4333



2011 Mountain Aire Diesel Pusher 4336



2011 Mountain Aire Diesel Pusher 4344

STANDARD FEATURES AND OPTIONS

MOUNTAIN AIRE DIESEL PUSHER 2011 STANDARD FEATURES

CHASSIS FEATURES

- Coated Aluminum Wheels
- Two-Stage Engine Compression Brake
- Adjustable Pedals
- Hydraulic Leveling Jacks with Single Touch Control
- Comfort Drive™ Steering With Adjustable Control
- Recessed Fuel Fills with Crossover to Fill from Either Side

AIR CONDITIONING & HEATING

- Two 13.5M Penguin™ Heat Pump Central Air Conditioners*
- Two 15M Penguin™ Heat Pump Central Air Conditioners*
- Hydronic Zone Heating System
- Roof Air Conditioning Condensation Drainage System

APPLIANCES & ACCESSORIES

- Polished Mystera® Range Cover
- Norcold® 12 Cu. Ft. Refrigerator with Icemaker and Water Dispenser
- One-Piece Washer/Dryer Prep*
- Sony® LCD TV and DVD Player in Living and Bedroom Areas*
- AM/FM Dash Radio with CD Player and Auxiliary Jack for MP3 Player
- Rearview Color Monitor System
- Sony® Surround Sound System
- High Definition Component Wiring
- Air Horns

CABINETS & FURNITURE

- Hardwood Cabinets with Concealed Hinges and Full Overlay Raised-Panel Cabinet Doors
- Residential Style Full Extension Ball Bearing Drawer Guides
- Hidden-Leaf Dinette Table with Four Chairs (Two Fixed, Two Folding)
- Polished Mystera® Countertop in Kitchen, Bath, and Bedroom Areas
- Pullout Mobile Island Kitchen Base Cabinet With Polished Mystera® Countertop*
- Flexsteel® Furniture
- Ultralux Leather Driver/Passenger Seats with Six-Way Power and Lumbar Support with

- Footrest on Oversized Passenger Seat
- Cedar Paneling in Bedroom Wardrobe
- King-Sized Bed with Radius Cornered Mattress with Quilted Bedspread and Accent Pillows

ELECTRICAL FEATURES

- 8.0 kW Cummins Onan® Quiet Series Diesel Generator on Slideout Tray
- 50 Amp Electrical Service with Flexible Cord
- Energy Management System
- NewPlex™ Wiring System
- 2000 Watt Inverter
- Midship Side Turn Signals
- Recessed Docking Lights
- Halogen Lights Recessed in Ceiling and Overhead Cabinets
- Lighted Wardrobe
- ICC Light Flasher Switch
- Mood Lighting Recessed in Window Treatments, Kitchen Toe Kick, and Bed Base
- Solar Prep
- Power Cord Rewind Reel
- Pre-Wire for Freezer

EXTERIOR FEATURES

- Full-Paint Masterpiece™ Finish With Super Clear Coat and DigiShield™ Front Protective Film
- Chrome Convex Exterior Mirrors with Remote Control, Defrost, Turn Signal Indicators, and Sideview Cameras
- Power Flush Stepwell Cover
- Power Locking Baggage Doors
- Keyless Entry with Door Bell and Touch Pad
- 10,000 lb. Towing Hitch with Two Extra 14 Gauge Wires*
- 15,000 lb. Towing Hitch with Two Extra 14 Gauge Wires*
- Lighted Acrylic Assist Handle at Entrance Door
- Rear Protective Tow Guard with Stainless Steel Newmar Name Cutout
- Chrome Trim Package

INTERIOR FEATURES

- Power-Activated Sun Visors
- Hardwood Fascia on Living Area Slideouts and Window Sills
- Polished Porcelain Floor Tile in Kitchen, Bathroom, and Living Areas
- Polished Mystera® Backsplash with Tile Accents in Kitchen and Bath

- Carpeting with High-Density Padding in Bedroom
- Hardwood Raised-Panel Interior Passage Doors

PLUMBING & BATH FEATURES

- Radius Shower with Glass Door
- Water Filter for Entire Unit
- Monoplex Water Pump Switches Located in Bathroom, Kitchen and Exterior Near Gate Valves

CONSTRUCTION FEATURES

- Power Lock Arms on All Slideout Rooms

WINDOWS, AWNINGS, & VENTS

- Frameless Double-Pane Tinted Safety-Glass Windows
- Girard® Power Awning on Windows, Entrance Door, and Slideout Covers
- Girard® Power Side Awning with Wind Sensor and Remote Control Recessed into Sidewall

MOUNTAIN AIRE DIESEL PUSHER 2011 OPTIONAL FEATURES

CHASSIS FEATURES

- TripTek™ Electronic Travel Information (Displayed on Rearview Monitor)

AIR CONDITIONING & HEATING

- Two 15M Penguin™ Heat Pump Central Air Conditioners*
- Extra 15M Penguin™ Heat Pump Central Air Conditioner with 10.0 kW Onan® Generator*
- Electric Heat under Floor Tile in Kitchen, Bath, and Living Areas
- Hydronic Zone Diesel Heating System
- Engine Assist Heating Loop Added to Hydronic Zone Propane Heating System

APPLIANCES & ACCESSORIES

- Norcold® Freezer on Pullout Tray
- Whirlpool® Front Load Two-Piece Washer/Dryer
- Residential Refrigerator with Icemaker and Water Dispenser
- Fisher Paykel Dishdrawer®
- Sony® 40" LCD TV in Front Overhead Cabinet*
- Sirius Satellite Radio Capability (Does not include monthly subscription)
- Dash Radio with Portable TomTom® Navigation System

- Universal Remote Control
- External Entertainment Center with Sony® 32" LCD TV and Sony® AM/FM Radio and CD Player
- Satellite Dish with High Definition Converter
- Central Vacuum with Deluxe Tool Kit
- CB Radio with Antenna
- CB Antenna

CABINETS & FURNITURE

- Mondavi Maple Hardwood Cabinets
- Carmel Glazed Cherry Hardwood Cabinets
- Manhattan Glazed Maple Hardwood Cabinets
- Euro-Style Cabinet Doors with Concealed Hinges
- Ultralux Leather Sofa/Dinette Ensemble*
- Ultralux Leather Euro Dinette *
- Ultralux Leather Recliners with Lamp Stand*
- Hide-A-Bed Sofa with Air Mattress*
- Combination Desk/Dinette Table with Two Fixed and Two Folding Chairs
- Air Mattress for Main Bed
- Heated Driver/Passenger Seats
- Wardrobe with Seating Area in Rear Bath*

EXTERIOR FEATURES

- Large Storage Tray with Access from One Side or Either Side*
- Large Storage Tray*
- Small Storage Tray*
- Power Sliding Storage Tray*

INTERIOR FEATURES

- Polished Porcelain Floor Tile Extended Into Bedroom Area
- Power Duo Day/Night Window Shades (Windshield and Driver/Passenger Side Windows)
- Power Silhouette Window Shades
- Safe

PLUMBING & BATH FEATURES

- Mystera® Shower Walls
- Fold-Down Shower Seat
- Assist Handle in Shower
- Bathtub*

WINDOWS, AWNINGS, & VENTS

- Additional Girard® Power Side Awning with Wind Sensor and Remote Control
- Driver's-Side Power Window

*CHECK WITH DEALERSHIP ON FLOORPLAN AVAILABILITY

SOLID MOUNTAIN AIRE CONSTRUCTION



Exterior features include new front and rear caps with an integrated spoiler, Girard® integrated power side awnings, and a super clear coat Full-Paint Masterpiece™ finish with DigiShield™.

Newmar Express Limited Warranty Every Mountain Aire Diesel Pusher is backed by Newmar's one-year limited warranty/unlimited miles. Ask your Newmar dealer for details.

Limited Five-Year Structural Warranty If any part of your Newmar recreational vehicle superstructure (which is the steel/aluminum structure of the sidewall, roof or frame) fails to perform properly within five years from the date of purchase because of faulty workmanship or material supplied by Newmar, it will be repaired without charge for either parts or labor by Newmar. This structural warranty is available only to the original purchaser and is non-transferable.

ROOF R-VALUE = 16

- a. BriteTEK™ Roof
- b. 9mm Wood Decking
- c. Fiberglass Batten Insulation
- d. A/C Ducting
- e. Aluminum Rafter Framing
- f. Kraft Paper Vapor Barrier
- g. 5/8" Bead Foam
- h. 3/16" Panel
- i. Padded Vinyl Overlay

SIDEWALL R-VALUE = 11

- j. 3/16" Plywood Interior Wall
- k. 5/8" Bead Foam
- l. Kraft Paper Vapor Barrier
- m. Fiberglass Batten Insulation
- n. 3/16" Plywood Exterior Wall
- o. Composite One-Piece Gelcoat Exterior Sidewall
- p. Aluminum Framing with 3 1/2" Header Above

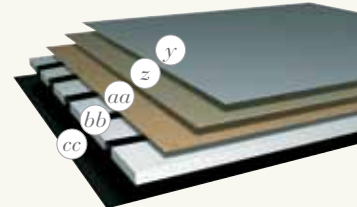
FLOOR R-VALUE = 16

- q. Carpet/Tile
- r. Carpet Padding
- s. 5/8" Floor Decking
- t. Fiberglass Batten Insulation
- u. 2"x 3" Wood Framing
- v. Polyethylene Moisture Barrier
- w. Foam Panels (Noise Protection)
- x. Aluminum Ducting

BASEMENT R-VALUE = 4

- y. Cargo Liner
- z. 3/8" Floor Decking
- aa. 3/16" Luan Panel
- bb. 1 1/2" Bead Foam
- cc. Aluminum Sheeting with Steel Support Rails to Prevent Bowing and Flexing

1. 13.5M or 15M Penguin™ Heat Pump Central Air Conditioners
2. One-Piece Bonded Windshield
3. Coated Aluminum Wheels
4. Frameless, Double-Pane, Tinted Safety-Glass Windows
5. Side-Hinged Baggage Doors with Optional Storage Tray



FLOORPLAN SPECIFICATIONS

Floor-plan	App. Overall Length	Width	App. Overall Height	Interior Width	Interior Height	Grey	Sewage	Water	Propane	Furnace
4034	40' 9"	101.5"	12' 6"	95.5"	84"	65 gal.	45 gal.	105 gal.	32 gal.	50,000 Btu
4085	40' 9"	101.5"	12' 6"	95.5"	84"	65 gal.	45 gal.	105 gal.	32 gal.	50,000 Btu
4314	42' 9"	101.5"	12' 9"	95.5"	84"	65 gal.	45 gal.	105 gal.	32 gal.	50,000 Btu
4333	42' 9"	101.5"	12' 9"	95.5"	84"	65 gal.	45 gal.	105 gal.	32 gal.	50,000 Btu
4336	42' 9"	101.5"	12' 9"	95.5"	84"	65 gal.	45 gal.	105 gal.	32 gal.	50,000 Btu
4344	42' 9"	101.5"	12' 9"	95.5"	84"	65 gal.	45 gal.	105 gal.	32 gal.	50,000 Btu



CHASSIS SPECIFICATIONS

Floor-plan	Engine HP	Axle Ratio	Fuel Cap.	Wheelbase	Front GAWR*	Rear GAWR*	Tag GAWR*	GVWR*	CCWR*	App. UVW	App. NCC
4034	425	4.88	150 gal.	276"	14,600 lb.	20,000 lb.	0 lb.	34,600 lb.	44,600 lb.	32,500 lb.	2,100 lb.
4085	425	4.88	150 gal.	276"	14,600 lb.	20,000 lb.	0 lb.	34,600 lb.	44,600 lb.	32,200 lb.	2,400 lb.
4314	425	4.88	150 gal.	276"+TAG	16,600 lb.	20,000 lb.	10,000 lb.	46,000 lb.	61,000 lb.	35,800 lb.	10,200 lb.
4333	425	4.88	150 gal.	276"+TAG	16,600 lb.	20,000 lb.	10,000 lb.	46,000 lb.	61,000 lb.	35,700 lb.	10,300 lb.
4336	425	4.88	150 gal.	276"+TAG	16,600 lb.	20,000 lb.	10,000 lb.	46,000 lb.	61,000 lb.	35,900 lb.	10,100 lb.
4344	425	4.88	150 gal.	276"+TAG	16,600 lb.	20,000 lb.	10,000 lb.	46,000 lb.	61,000 lb.	35,500 lb.	10,500 lb.

Lengths, heights, widths and dry weights are approximate. Weight will vary based on optional equipment added to the above base weight. GAWR: Gross Axle Weight Rating is the maximum permissible weight for an axle. GVWR: Gross Vehicle Weight Rating is the maximum permissible weight for a fully loaded motor coach. GCWR: Gross Combination Weight Rating is the value specified by the manufacturer of the vehicle as the maximum allowable loaded weight of this motor coach and any towed trailer or towed vehicle.

UVW: Unloaded Vehicle Weight is the weight of this motor coach as built at the factory with full fuel, engine oil and coolants. The UVW does not include cargo, fresh water, propane gas or dealer-installed accessories. NCC: Net Carrying Capacity is the maximum weight of all occupants, including the driver, personal belongings, food, fresh water, waste water, propane gas, tools, tongue weight of towed vehicle, dealer-installed accessories, etc., that can be carried by the motor coach. *Specifications supplied by the chassis manufacturer.



Comfort Drive
STEERING



A MEMORABLE FINISH

Established over 40 years ago, Newmar is an innovator and leader in the RV manufacturing industry. Its quality craftsmanship is recognized nationally. The Newmar dealer network spans across the United States and Canada.

Please be our guest for a Newmar factory tour. Call 1-800-860-0086 to learn more.



The Newmar Kountry Klub is an exclusive club for owners of fine Newmar products that offers many advantages and benefits to its members. Learn more at www.newmarkountryklub.com.

www.newmarcorp.com

NEWMAR CORPORATION • 355 N DELAWARE ST • PO BOX 30 • NAPPANEE IN 46550-0030

574-773-7791 • Fax 574-773-2895