

2011

Melbourne

MOTORHOMES BY JAYCO



AMERICA'S MOST LIVEABLE RVs.




TRUE VALUE OF OWNERSHIP

With Jayco, you get more amenities, more liveable, home-like features and superior construction for better durability and greater resale value. **Simply put, you won't find another RV packed with more TRUE VALUE — from the time of purchase to the time you sell.**

- + 2-year warranty
- + more standard features
- + more brand-name components
- + less maintenance
- + better resale value

True Value of Jayco Ownership

Learn more about Jayco's True Value by finding the blue arrows  throughout this brochure.



AMERICA'S MOST LIVEABLE RVs.



CERTIFIED GREEN

All Jayco products are green certified by TRA Certification Inc., an independent, third-party certification agency. Melbourne earned gold certification through the use of sustainable materials, environmentally-friendly production methods, energy-efficient components and reduction of waste.



WARRANTY

WE BACK OUR PRODUCTS FOR 2 YEARS. ASK OUR COMPETITION WHY THEY DON'T.

You want your RV to last a long time. And nobody backs their RVs better than we do. Our exclusive two-year Co-Pilot Warranty is the best in the business and provides assurance that you'll enjoy your purchase for many years.



Enjoy the ride.

The Jayco Melbourne was designed for well-traveled people. And for those who love to travel well. Its smaller, more manageable size and responsive handling make it perfect for any situation, from city streets to steep, winding mountain passes. By combining the finest high-end materials available with our proven, time-tested construction techniques, Melbourne delivers everything you're looking for in an RV, so all you have to do is sit back and enjoy the ride.



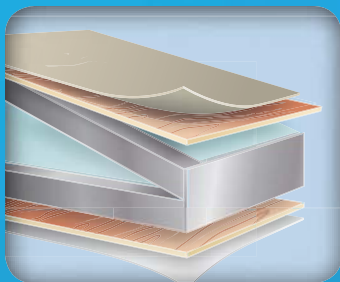
↑ POWERFUL

Built on a Ford E-450 chassis, Melbourne's Triton 6.8L EFI V-10 305 HP engine is extremely reliable, while its 5-speed Torqueshift transmission, usually found in Class A motorhomes, gives it superior towing capability.



↑ EXTERIOR ELEGANCE

Melbourne's painted exterior graphics and aerodynamic gel-coated fiberglass front and rear caps are easy on the eyes.



↑ DURABLE CONSTRUCTION

Melbourne is built to last with TuffShell vacuum-bonded laminated sidewalls and a fiberglass roof with radius corners.

Melbourne



↑ LIVEABLE FEATURES

Every Jayco comes packed with features and amenities designed to make your life easier and family time more enjoyable.



MODERN APPLIANCES

Enjoy a home-cooked meal with the under-counter Apollo convection microwave and 3-burner cooktop.



SAFETY

With safety as a top priority, Jayco includes a seat belt for every built-in seating position.



REAR CAMERA

Backing up just got easier—and safer—thanks to Melbourne's touch-screen Multi-Media In-Dash Sound System and back-up camera.





MELBOURNE 29D | NUTMEG



MELBOURNE 29D | NUTMEG



MELBOURNE 29D | NUTMEG

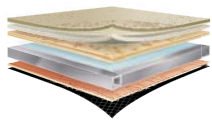
JAYCO CONSTRUCTION

At Jayco, we've built a reputation for superior construction and craftsmanship. We always use top-quality materials and production techniques, giving our products reliable resale value and our owners peace of mind.



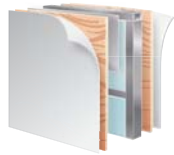
INSIDE ENGINEERING

Much of what gives a Jayco its reputation for durability and strength is inside the walls and under the chassis. Melbourne features 1 an aerodynamic seamless front cap, 2 a Ford E-450 chassis with a Triton 6.8L EFI V-10 305 HP engine, 3 slideout awnings, 4 aerodynamically curved sidewalls and 5 an air conditioning system.



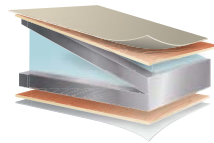
FLOOR

Vacuum-bonded lamination joins our welded aluminum frame with a heavy-duty Structurwood floorboard and seat belt backers to create one of the industry's strongest foundations.



WALLS

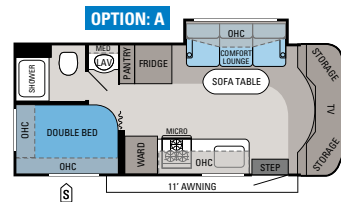
TuffShell vacuum-bonded lamination combines welded aluminum framing with high-gloss fiberglass exterior siding to create a durable structure designed to withstand many years of use and travel.



ROOF

The laminated, vacuum-bonded roof is comprised of 1/4" plywood decking on 5" arched aluminum trusses with bead-foam insulation (R-23) and a seamless one-piece fiberglass shield.

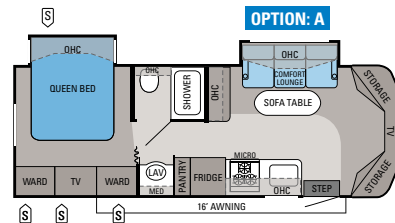
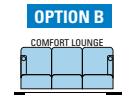
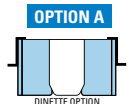
Melbourne | FLOORPLANS



MELBOURNE | 24E

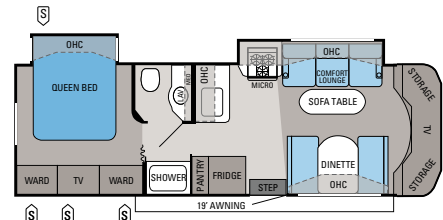
Ext. Length: 25' 11" Ext. Height: 125"

OPTIONS



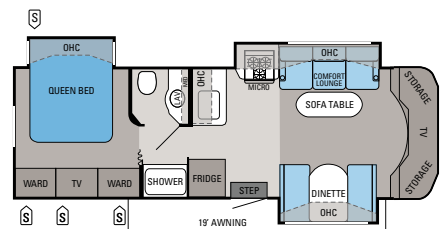
MELBOURNE | 26A

Ext. Length: 28' 8" Ext. Height: 125"



MELBOURNE | 29C

Ext. Length: 31' 8" Ext. Height: 125"

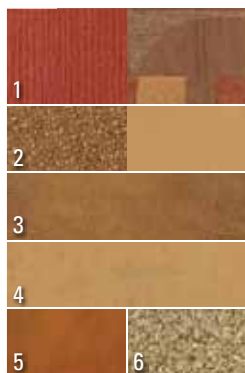


MELBOURNE | 29D

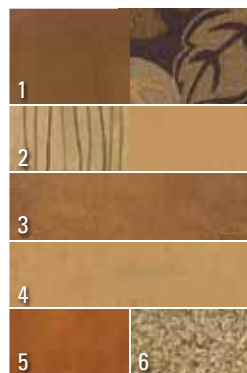
Ext. Length: 31' 8" Ext. Height: 125"

Melbourne | INTERIOR DÉCOR CHOICES

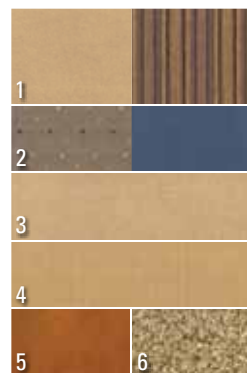
CRIMSON



NUTMEG



INDIGO



- 1 Accent fabrics
- 2 Bedroom accents
- 3 Sofa and driver/passenger seats
- 4 Drapery
- 5 Wood
- 6 Carpet

EXTERIOR COLORS



STANDARD PAINT



SAND DRIFT PREMIUM PAINT (OPTIONAL)



IRON SLATE PREMIUM PAINT (OPTIONAL)

STANDARD BATHROOM EQUIPMENT

- 6-panel residential-style passage doors
- ABS shower with one-piece surround
- Porcelain stool with foot flush
- Removable clothing rod in shower (select models)
- Residential linoleum floor
- Residential medicine cabinet with mirror
- Robe/towel hooks
- Skylight in shower with light (select models)
- Stainless-steel sink bowl
- Toilet paper holder
- Towel holder
- Towel ring

STANDARD BEDROOM EQUIPMENT

- 22" digital LCD HDTV
- Accordion door to rear bedroom
- Halogen reading lights
- Padded headboard
- Powered attic fan
- Queen bed with Cloud Ten pillowtop mattress
- Quilted bedspread

STANDARD KITCHEN EQUIPMENT

- 6 cu. ft. refrigerator
- Drawer for silverware, divided for utensils
- Dream Dinette mechanism, raises and lowers dinette tabletop
- Fluorescent light over kitchen sink
- High-rise single-lever faucet with pull-out sprayer
- Mini blind
- One-piece J-Stone solid-surface high-gloss countertop with integrated deep bowls
- Range hood
- Residential linoleum floor in kitchen
- Sink/cutting board covers (2)
- Splash guard, made of Plexiglas (select models)
- Under-counter Apollo convection microwave with 3-burner cooktop
- Water purification system

STANDARD CAB EQUIPMENT

- 3-point lap and shoulder safety belts (driver and passenger)
- Auxiliary start switch
- Optima leather driver seat with 6-way power
- Optima leather passenger seat
- Padded fabric headliner
- Privacy drape for lower cab
- Remote keyless entry

STANDARD CHASSIS EQUIPMENT

- 5-speed automatic Torqueshift series transmission with overdrive
- 55-gal. fuel tank
- 78" ceiling height
- 130-amp alternator
- 5,000-lb. rated hitch with 7-way plug
- A/C and cruise control

- Dome lights
- Ford E-450 chassis
- Hellwig helper springs
- Power anti-lock brakes with power steering
- Power window and door locks
- Rubber insulation body mounts
- Tilt steering wheel
- Triton 6.8L EFI V-10 305 HP engine

STANDARD CONSTRUCTION FEATURES

- Bead-foam insulation (R-23 max roof, R-9 max floor, R-6 max walls)
- Cabinetry crafted with screwed-stile construction
- Curved sidewall construction
- Electric-powered slideouts
- High-gloss, gel-coated sidewalls
- One-piece fiberglass roof
- TuffShell vacuum-bonded 5" crowned laminated roof
- TuffShell vacuum-bonded laminated floor and sidewalls
- Unitized, 1-1/2" laminated construction of floor
- Welded aluminum sidewall framework

STANDARD EXTERIOR EQUIPMENT

- 120V G.F.C.I. protected exterior receptacle
- Automotive taillights
- Dual sliding battery tray
- Electric-powered, double entrance step
- Entry door gas strut
- Exterior speakers, high-output marine-grade (2)
- Fiberglass running boards
- Front and rear gel-coated fiberglass caps
- Heated holding tanks, 12V pads
- Heavy-duty grab handle for entry assistance
- House battery
- Lockable exterior storage compartments with door pulls
- Painted skirting
- Patio awning
- Patio light with inside switch
- Radius-cornered entrance door with screen
- Roof ladder
- Sewer hose compartment with door
- Slideout topper awnings
- Wheel liners

STANDARD INTERIOR EQUIPMENT

- Ball bearing drawer guides 75-lb. capacity with full-drawer extension
- Brushed nickel fixtures
- Cable TV hookup with RG-6 coax
- Crank-up digital antenna for TV with signal booster
- Decorative pillows for sofa
- Deluxe hidden cabinet hinges
- Entertainment center in front, includes 26" digital LCD HDTV
- Fabric-covered box valances with lambrequin legs
- High-intensity halogen recessed 12V lighting package
- Leather touch comfort lounger with cup holders in arms
- Padded vinyl ceiling
- Padded wings behind cab

- Prep for satellite dish for roof and sidewall
- Raised-panel cabinet doors throughout
- Trackless carpeting with padding throughout unit
- Under-cabinet halogen lighting
- Washington Glazed Maple cabinetry

STANDARD HEAT, POWER & WATER EQUIPMENT

- 6-gal. gas/electric DSI auto-ignition water heater
- 12V demand water pump
- 12V electrical system with 110V, 60-amp power converter
- 30-amp power cord
- 56-lb. chassis-mounted propane tank
- Auto-ignition furnace with wall thermostat
- Black holding tank sprayer
- Conveniently placed water pump switches
- Hookup for city water
- Interior Command Center
- Onan 4000-watt MicroQuiet generator with auto-changeover
- Outside shower
- Water heater bypass system

STANDARD SAFETY EQUIPMENT

- Battery disconnect
- Deadbolt lock on entrance door
- Driver and passenger air bags
- Egress window
- Fire extinguisher
- Lap safety belts on all seats in living area
- Propane/carbon monoxide alarm
- Smoke alarm
- Third brake light
- Tinted safety-glass windows

OPTIONS

- 400-watt inverter
- 15,000-BTU A/C with heat pump
- Customer Value Package
- Diamond Shield paint protection film
- Dinette in lieu of leather comfort lounger (select models)
- Driver/passenger side view cameras
- Electric leather comfort lounger
- Premium Paint Package: Iron Slate
- Premium Paint Package: Sand Drift
- Leather comfort lounger in lieu of dinette (select models)
- Navigation system
- Satellite kit
- Winegard dome satellite dish

CUSTOMER VALUE PACKAGE

- Attic fan in living area
- Bathroom power vent
- Deluxe, remote-control, heated, side-view mirrors
- Glass shower door
- Pleated day/night shades throughout
- Portable, outside gas grill
- Touch-Screen Premium In-Dash Sound System
- AM/FM/CD/DVD with back-up camera monitor
- Wood-grain dash kit

FLOORPLAN	EXT. LENGTH	EXT. HEIGHT (WITH A/C)	INT. HEIGHT	GROSS VEHICLE WEIGHT RATING (LBS.)	GROSS COMBINED WEIGHT RATING (LBS.)	ENGINE/SIZE	WHEEL BASE	FURNACE AUTO-IGNITION (BTUS)	FRESH WATER CAPACITY (INCLUDES WATER HEATER) (GALS.)	GRAY WATER CAPACITY (GALS.)	BLACK WASTE WATER CAPACITY (GALS.)
24E	25' 11"	125"	78"	14,500	19,500	TRITON EFI V10	176"	25M	37	32	32
26A	28' 8"	125"	78"	14,500	19,500	TRITON EFI V10	181"	31M	37	34	32
29C	31' 8"	125"	78"	14,500	19,500	TRITON EFI V10	212"	31M	37	34	32
29D	31' 8"	125"	78"	14,500	19,500	TRITON EFI V10	212"	31M	37	34	32



AMERICA'S MOST **LIVEABLE** RVs.



INDUSTRY-LEADING WARRANTY

The Jayco Co-Pilot Warranty is a manufacturer's limited warranty. It comes from the people who build Jayco recreation vehicles to the people who buy them. Each Jayco is warranted to the original purchaser for twenty-four (24) months or twenty-four thousand (24,000) miles (mileage limitation applies to motorized products only), whichever occurs first, from the original date of purchase against defects in materials and workmanship. Jayco's limited warranty is not transferable. Go ahead and compare the Jayco warranty with other manufacturers' warranties. You'll find it's the best in the business!

For a copy of the limited warranty with full terms and conditions, ask your local Jayco dealer.



OVER 300 LOCAL DEALERS

Establishing a solid relationship with your local Jayco dealer is a key component in the enjoyment of your new Jayco. By purchasing from a local dealer, you will have a convenient location for sales, parts and service support.

Jayco dealers are required to deliver all products at the site of the sale to provide a full product orientation and walkthrough at the time of delivery. It's a good way to become familiar with your Jayco and to meet the service, parts and warranty staff members who will be assisting you. If you live in Canada, there are regulations that must be met when buying a Jayco RV. Your local Canadian dealer is a professional at meeting these requirements and regulations. There simply is no substitute for a good relationship with your local Jayco dealer.



1-YEAR ROADSIDE ASSISTANCE

Travel worry-free with Jayco's Customer First Roadside Assistance program, yours at no cost during your first year of ownership. This program is offered through Coach-Net, the largest RV emergency road service in the country, and gives you immediate access to dependable roadside assistance and support services with a simple phone call.

- Free jump starts
- Free tire changes
- Free fuel delivery
- Free lockout service
- Free travelers checks
- Toll-free nationwide service appointment assistance
- 24-hour toll-free emergency message service
- Free custom trip routing and full-color map service
- Free dispatch of on-site mechanical service
- \$2,000 trip-interruption reimbursement
- RV technical assistance hotline
- Free towing to nearest qualified service

Your Jayco Dealer



Jayco proudly sponsors Tread Lightly!, a nonprofit organization whose mission is to empower generations to enjoy the outdoors responsibly through education and restoration.



From RV insurance to extended warranties, JayPlus has it covered. Ask your Jayco dealer about our exclusive JayPlus program today.



As a Jayco owner, you can be part of the Jayco Jafari International Travel Club. Ask your dealer about the Jafari "flight" in your area, write Jayco or visit our website.

Gross Vehicle Weight Rating (GVWR): The maximum permissible weight of the motorhome, including the Unloaded Vehicle Weight (UVW) plus passengers, personal items, all cargo, fluids, options and dealer-installed accessories. The GVWR is equal to or greater than the sum of the UVW and the Cargo Carrying Capacity.

Gross Combined Weight Rating (GCWR): The maximum allowable combined weight of the motorhome used as a tow vehicle and the attached towed vehicle.

It is important for your safety and enjoyment that you are aware of the weights and tow ratings of the RV you select. Consult a competent advisor for questions or advice. Whether you are new to RVing or a veteran, get a feel for the performance

of your RV before heading out on the roadways. When you tow a vehicle with your RV, you must drive differently than when you drive a single vehicle. Practice hooking up, driving, backing up and braking in a safe environment or seek out professional instruction. Jayco affixes a weight label to each RV which lists weight information for that vehicle. Refer to that label to verify the vehicle will meet your requirements. See specifications chart inside.

Jayco, Inc., P.O. Box 460, Middlebury, IN 46540, www.jayco.com © **RVIA**

See dealer for further information and prices. All information in this brochure is the latest available at the time of publication approval. Jayco reserves the right to make changes and to discontinue models without notice or obligation. Photos in this brochure may show optional equipment and props for photography purposes. RVs built for sale in Canada may differ to conform to Canadian codes. ©2010 Jayco, Inc. 11-MEL-PL 0710-50K Printed in U.S.A.