

Four Winds

FOUR WINDS *Class C* **SPECIFICATIONS**



Four Winds

EASY TO AFFORD, EASIER TO DRIVE *Class C*

MODEL	19G	21RB	23S	23U	25C	28A	28Z	31A	31K	31P
Chassis (Ford/Chevy/Sprinter)	Ford	Ford/Chevy	Sprinter	Ford/Chevy	Ford/Chevy	Ford/Chevy	Ford	Ford	Ford	Ford/Chevy
Gross Vehicle (GVWR)	10050	11,500 / 12,300	11030	12,500 / 12,300	14,500 / 14,200	12,500 / 12,300	14500	14500	14500	14,500 / 14,200
Gross Combined (GCWR)	13,000 / 16,000	18,500 / 16,000	15250	18,500 / 16,000	20,000 / 17,600	18,500 / 16,000	20000	20000	20000	20,000 / 17,600
Wheel Base	138"	138"/139"	170.3"	158"/159"	188.5"/189.5"	190"/191"	210"	223"	223"	219"/220"
Exterior Length (w/o ladder)*	19' 9-1/2"	22' 7 3/4"	24' 9"	24' 9-1/2"	27' 4"	29' 9"	29' 10-1/2"	32' 2"	32' 6-1/2"	32' 2-1/2"
Exterior Height (w/ AC)	10' 3"	10' 10"	11'	10' 10"	10' 10"	10' 10"	10' 10"	10' 10"	10' 10"	10' 10"
Exterior Width (w/o mirrors)	90-5/8"	99"	90"	99"	99"	99"	99"	99"	99"	99"
Interior Height	80"	82"	80"	82"	82"	82"	82"	82"	82"	82"
Awning Size	8'	12'	15'	15'	18'	14'	14'	10' 6"	16'	16'
Fuel (gal)	37	37/35	26.4	55/57	55/57	55/57	55/57	55/57	55/57	55/57
LPG (lbs)	40	40.9	68.2	40.9	40.9	40.9	40.9	40.9	40.9	40.9
Fresh/Waste/Grey Water (gal)	20/17/16.5	21/25/22	40/38/34	40/24/38	40/24/38	40/25/22	40/26/32	40/26/31	40/31/29+22	40/31/29
Water Heater (gal)	6	6	6	6	6	6	6	6	6	6
Furnace (BTUs)	16K	25K	25K	25K	30K	30K	30K	30K	30K	30K
Exterior Storage Capacity (cu. ft.)	6.48	6.4	65.4	69.5	69.7	106	98.3	53.7	99.2	101.4



STANDARD



PARTIAL PAINT

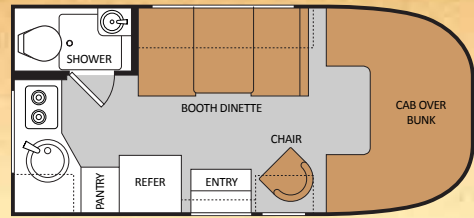


**CHERRY
(STANDARD)**

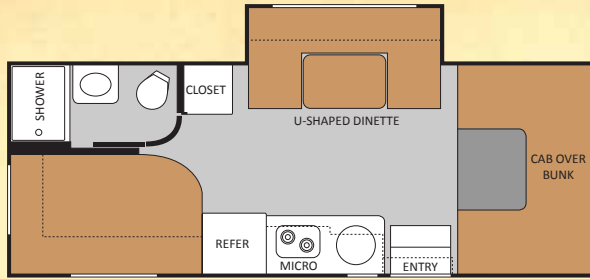


**GLAZED MAPLE
(OPTIONAL)**

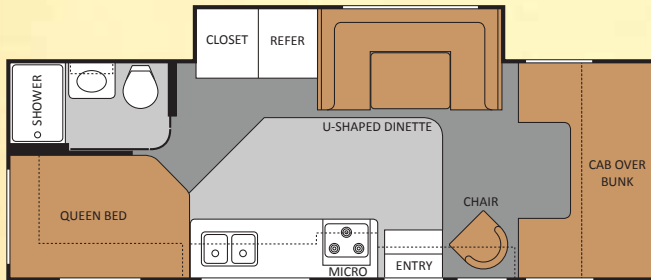
IMPORTANT - PLEASE READ: Information published within this brochure reflects product design, fabrication, material, components and specifications at the date of printing. If your vehicle was manufactured before this brochure was published this information may not be accurate because vehicles assembled before the brochure was published may not have the same design, fabrication, materials, components and specification as represented in the brochure. If your vehicle was manufactured after this sales brochure was published the representations may not be accurate because, for product improvement reasons, we reserve the unilateral right, at any time, without prior notice, to make changes in product design, material, components and specifications. The date the brochure was published (i.e. "Julian date") is set forth on the last page of the brochure. **IF CERTAIN INFORMATION PUBLISHED WITHIN THIS BROCHURE IS SIGNIFICANT TO YOUR PURCHASING DECISION, PLEASE CONSULT WITH YOUR SELLING DEALERSHIP TO CONFIRM THAT THE INFORMATION IS ACCURATE WITH RESPECT TO THE VEHICLE YOU ARE CONSIDERING PURCHASING.** Photographs in the brochure may depict optional equipment or may only be available in certain floor plans. We reserve the right to make changes in prices and models and to discontinue models without notice or obligation. Components, appliances and the chassis may have been manufactured in a calendar year before the vehicle's designated model year. All capacities are approximate. The actual length of the vehicle may differ from that indicated in the brochure due to variances in the manufacturing processes and/or installed components. All dry weights are based on standard model features and do not include optional features or equipment. Components, appliances and features may differ to conform to local codes. Due to EPA environmental restrictions, engine power and torque ratings may change during any model year. The Thor Motor Coach logo and its design are registered trademarks. Other products and company names are trademarks and/or registered trademarks of their respective manufacturer. While the color of the motorhome's exterior and the interior fabrics depicted in this brochure are fair and reasonable depictions, the colors depicted may not be exact match of the actual colors because of variances in photo processing and printing. Component part and appliance manufacturers issue limited warranties covering portions of the vehicle not covered under the limited warranty we issue. To learn specific details regarding warranty coverage please consult your selling dealership or review the warranty packet inside the vehicle.



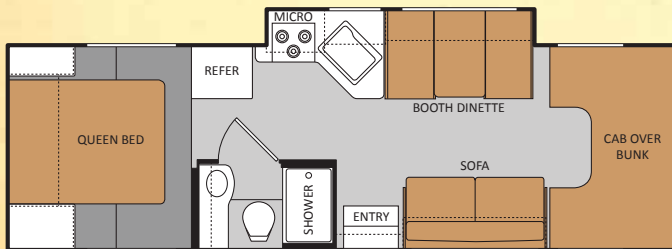
19G



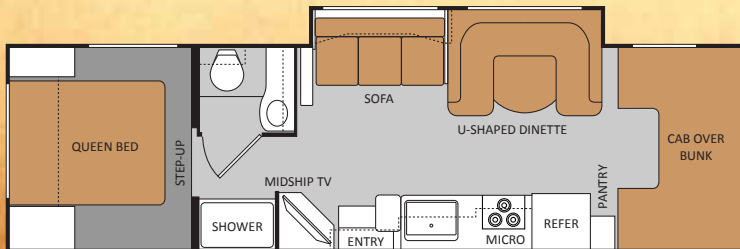
23S



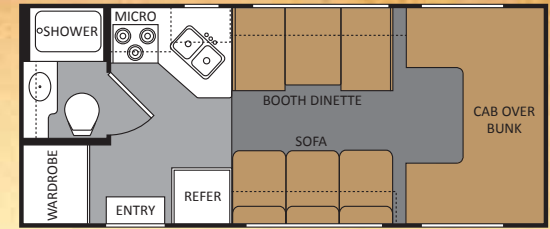
25C



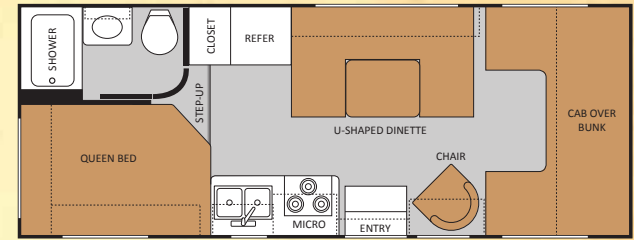
28Z



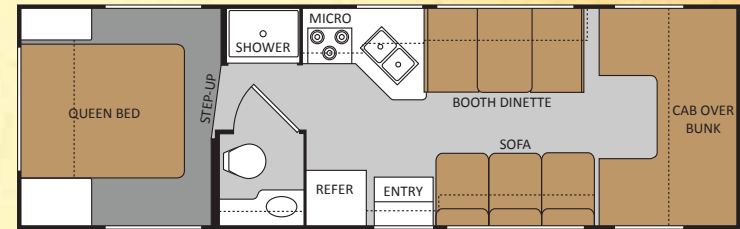
31K



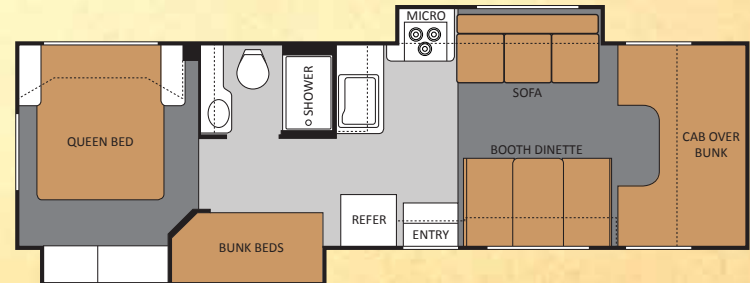
21RB



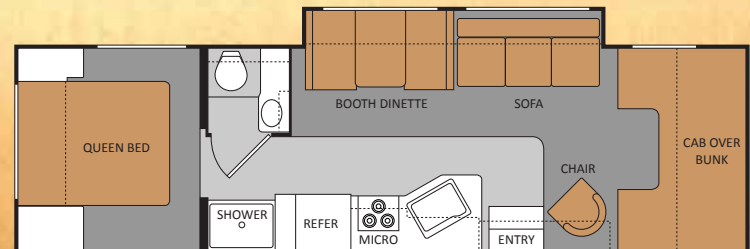
23U



28A



31A



31P

STANDARD FEATURES AND OPTIONS

CONSTRUCTION & EXTERIOR

- Vacu-Bond Laminated Aluminum Roof & Sidewall Cage Construction
- Slick Fiberglass Exterior with vinyl graphics
- Exterior Rear MEGA Storage Compartment (23U, 28A, 28Z, 31P)
- Seamless Roto-cast Storage Compartments
- Flush Mount Radius Luggage Doors
- Premium One-piece TPO Roof
- Manual Patio Awning
- Slide-Out Room Awning (Slide models only)
- Roof Ladder
- Drop Down Stairwell Entrance Step (N/A 21RB & 23S)
- Manual Entrance Step (21RB)
- Automatic Electric Entrance Step (Std. 23S only)

CONSTRUCTION & EXTERIOR OPTIONS

- Exterior Graphics w/Partial Paint Package
- Outside Shower
- Electric Patio Awning (N/A 19G,31A)
- Automatic Electric Entrance Step (21RB only)

AUTOMOTIVE & COCKPIT

- "RV Style" AM/FM Dash radio with CD player, WB tuner and auxillary input
- Three-point Seatbelts for the Driver & Passenger
- Power Windows & Door Locks
- Keyless Entry (23S only)
- Deluxe Exterior Mirrors (N/A 23S)
- Deluxe Heated Remote Exterior Mirrors (23S only)
- Metal Running Boards (N/A 23S)
- Spare Tire
- 3,500-lb. Trailer Hitch (19G & 23S only)
- 5,000-lb. Trailer Hitch (N/A 19G & 23S)
- Aluminum Wheels (19G only)

AUTOMOTIVE & COCKPIT OPTIONS

- Deluxe Heated Remote Exterior Mirrors (Std. 23S)
- Convenience Package: Keyless Entry/Valve Stem Extenders (N/A 19G & 23S)
- Wheel Liners (N/A 19G)

- Leatherette Driver & Passenger Captain's Chairs
- Power Driver's Seat (Ford Chassis Only)
- Back-up Monitor

INTERIOR

- 80" Interior Ceiling Height (19G & 23S)
- 82" Interior Ceiling Height (N/A 19G & 23S)
- Residential Linoleum (Galley, Bath and Entry Way)
- Metal Entry Grab Handle
- Windshield Privacy Curtain
- 13,500 BTU Roof Air Conditioner in Front
- Ceiling Ducted Air Conditioning System (N/A 19G & 23S)
- Cherry or Glazed Maple Cabinetry
- Raised Panel Upper Cabinet Doors
- Hardware w/Brushed Nickel Finish
- Night Shades
- Incandescent Ceiling Lighting
- Fabric Barrel Chair (19G, 23U, 25C, 31P only)
- Fabric Jacknife Sofa (21RB, 28A, 28Z, 31A, 31P)
- Leatherette Hide-a-Bed Sofa w/Air Mattress (31K)
- Booth Dinette (19G, 21RB, 28A, 28Z, 31A, 31P)
- Fabric U-shaped Dinette (23S, 23U, 25C, 31K)

INTERIOR OPTIONS

- 15,000 BTU Roof Air Conditioner in Front (N/A 19G & 23S)
- Leatherette Euro Chair w/Ottoman IPO Barrel Chair (23U,25C, 31P)
- Leatherette Jacknife Sofa (21RB,28A,28Z,31A,31P)
- Fabric Hide-a-Bed Sofa (31K)
- Leatherette Hide-a-Bed Sofa w/Air Mattress (31P)
- Leatherette U-shaped Dinette (23S,23U,25C,31K)
- Fantastic Fan
- Fantastic Fan in the Overhead Bunk (N/A 19G & 23S)

GALLEY

- Single Door Refrigerator (19G only)
- Double Door Refrigerator (N/A 19G)
- 2-Burner High-output Gas European Range Top w/Glass Cover (19G & 23S only)
- 3-Burner High-output Gas Range Top (N/A 19G & 23S)
- Microwave Oven

- Pantry (31K & 31P only)
- Skylight in the Kitchen Area
- Laminate Countertops
- Large Single Bowl Sink (19G & 23S only)
- Large Double Bowl Sink (N/A 19G & 23S)
- Flip-up Countertop Extension (23U,31A,31K,31P)
- Full Extension Metal Drawer Guides

GALLEY OPTIONS

- 3-Burner High-output Gas Range Top w/Oven (N/A 19G & 23S)
- Convection Microwave

ENTERTAINMENT

- Entertainment Center w/32" LCD Television (Midship)(31K)
- Television Antenna & Booster
- Cable TV and Satellite Prep
- HD/DSS Satellite Prep
- 19" LCD Television on Swivel, Side Mounted in Cab-over (N/A 31K)
- 26" LCD Television on Electric Swivel, Side mounted in Cab-over (N/A 19G & 31K)
- 19" LCD television in bedroom (28A,28Z,31A,31K,31P)
- (2) 13" LCD Televisions w/DVD Player in bunk beds (31A)
- Outside Entertainment Center: 26" LCD Television, AM/FM stereo, CD/DVD Player and Speakers (31P only)
- Coach Radio System w/DVD Player (23S only)

BEDROOM & BATHROOM

- Queen Bed w/Mattress (N/A 19G & 21RB)
- Bunk Beds in Hallway Slideout (31A only)
- Bedspread and pillow shams (N/A 19G & 21RB)
- Power Bath Vent
- Plastic Marine Toilet (19G only)
- China Bowl Toilet (N/A 19G)
- Skylight in Shower
- Shower with Glass Door

SAFETY & CONVENIENCE

- Systems Control Center
- Smoke, LPG, Carbon Monoxide Detectors
- Fire Extinguisher

SAFETY & CONVENIENCE OPTIONS

- Child Safety Seat Tether Anchor in Booth Dinette

ELECTRICAL & PLUMBING

- Onan RV MicroQuiet™ 4.0 (4000-kilowatts) Gas Generator (N/A 23S)
- Onan 3.6 (3600-kilowatts) LP Generator (23S only)
- 30 amp Service w/Shore Line Power Cord
- Battery Disconnect Switch
- Emergency Start Switch (N/A 23S)
- Auxiliary House Battery
- 6-gallon DSI Gas Water Heater
- Water Heater Bypass System

ELECTRICAL & PLUMBING OPTIONS

- Onan 3.2 (3200-kilowatts) Diesel Generator (23S only)
- Automatic Shoreline-to-generator Transfer Switch
- Second Auxiliary House Battery (N/A 19G)
- 6-gallon DSI Gas/electric Water Heater
- Holding Tanks w/Heat Pads

YOUR LOCAL TMC DEALER:



Go RVing.

P.O. BOX 1486 • ELKHART, IN 46515 • CUSTOMER SERVICE: 800-860-3812 • SALES DEPARTMENT: 800-860-5658 • **FOURWINDS-CLASSC.COM**

