

ALUMA

www.alumaklm.com

Aluminum Trailers to fit your every need.

Quality
BUILT-IN



5 Year Warranty ■ Lightweight ■ Maintenance Free ■ Durable Construction

ALUMA

www.alumaklm.com

101 East Seneca
Bancroft, IA 50517
866-415-3285
Fax: 515-885-2592



Table of Contents:

Single Axle Trailers	1-3
Tandem Axle Trailers	4-6
ATV Trailers	7-8
Motorcycle Trailers	9-10
Personal Watercraft Trailers	11
Enclosed Trailers	12-15
Enclosed Car Hauler	16
Enclosed Snowmobile Trailers	17-18
Snowmobile Trailers	19-20
Truck Beds	21



Aerial view of Aluma factory

Flatbed Trailers - Single Axle



548

shown w/optional 24" solid side rack, bifold tailgate and swivel jack

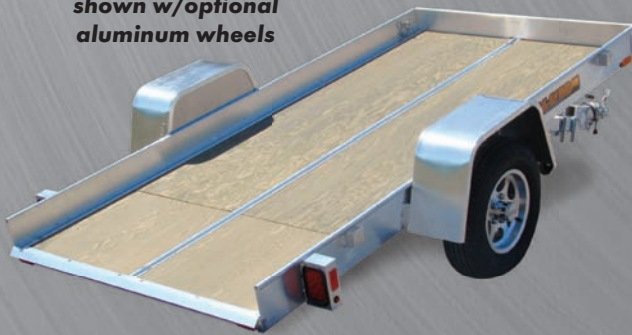


GTT

Not meant for highway speeds

5410TWD

shown w/optional aluminum wheels



5410T

shown w/optional jack



MODELS 548-7210

	548	5410	5410T	5410TWD	638	6310	6810	6810T	7210
Overall Width	75.5"	75.5"	75.5"	75.5"	84.5"	84.5"	93"	93"	93"
Overall Length	145"	170"	168"	168"	145"	170"	167"	167"	170"
Bed Width	54"	54"	54"	54"	63"	63"	68"	54" wood bed	72"
Bed Length	96"	120"	120"	120" wood bed	96"	120"	117"	117"	120"
Bed Height	16.75"	16.75"	16.75"	16.75"	16.75"	16.75"	16.25"	16.25"	16.75"
Weight	320#	360#	280#	280#	345#	385#	440#	440#	420#
GVWR	2000#	2000#	2000#	2000#	2000#	2000#	2200#	2200#	2200#
Rubber Torsion Axle	1-2000#	1-2000#	1-2000#	1-2000#	1-2000#	1-2000#	1-2200#	1-2200#	1-2200#
Wheels	13" Aluminum	13" Aluminum	13" Steel	13" Steel	13" Aluminum	13" Aluminum	13" Aluminum	13" Steel	13" Aluminum
Side Stake Pockets	4 Total 2 per Side	4 Total 2 per Side	4 Total 2 per Side	4 Total 2 per Side	4 Total 2 per Side	4 Total 2 per Side	4 Total 2 per Side	4 Total 2 per Side	4 Total 2 per Side
Aluminum Tongue	3" Formed 2" Coupler	3" Formed 2" Coupler	3" Formed 2" Coupler	2" Formed 2" Coupler	3" Formed 2" Coupler	3" Formed 2" Coupler	A-Frame 2" Coupler	2" Formed 2" Coupler	3" Formed 2" Coupler
Swivel Tongue Jack	Optional	Optional	Optional	Optional	Optional	Optional	Optional	Optional	Optional
Tailgate	Full width 39" long	Full width 39" long	N/A	N/A	Full width 39" long	Full width 39" long	Full width 44" long	N/A	Full width 44" long

STANDARD FEATURES

STANDARD FEATURES

GTT

Overall Width x Length	36" x 87"
Overall Height	25"
Bed Width x Length	36" x 48"
Side Height	8"
Weight	82#
Axle	Straight
Wheels	8" Steel
Lighting	N/A
Options	N/A



LED Lights - Standard on all Trailers

8112

shown w/optional bifold gates & aluminum wheels



8113

Bifold Gates & Sides Standard



8114



7210

shown w/optional bifold tailgate



6812H

shown w/optional bifold tailgate



MODELS 7710-8114

STANDARD FEATURES

	7710	7710H	7712	7712H	7814ST	8112	8113	8114
Overall Width x Length	101.5" x 176"	101.5" x 176"	101.5" x 194.5"	101.5" x 194.5"	101.5" x 224"	101.5" x 193"	101.5" x 203"	101.5" x 219"
Bed Width x Length	78 x 123"	78 x 123"	78 x 142"	78 x 142"	78 x 170"	81 x 145"	81 x 153"	81 x 171"
Bed Height	16.25"	17.25"	16.25"	17.25"	18.5"	19.25"	18"	19.25"
Weight	525#	595#	570#	620#	900#	610#	820#	695#
GVWR	2200#	2990#	2200#	2990#	2990#	2990#	2990#	2990#
Rubber Torsion	1-2200#	1-3000#	1-2200#	1-3000#	1-3000#	1-3000#	1-3000#	1-3000#
Wheels	13" aluminum	14" aluminum	13" aluminum	14" aluminum	14" aluminum	14" steel	14" aluminum	14" steel
Side Stake Pockets	4 total 2 per side	4 total 2 per side	4 total 2 per side	4 total 2 per side	6 total 3 per side	no pockets 6 tie loops	no pockets 6 tie loops	no pockets 8 tie loops
Aluminum Tongue	A frame 2" coupler	A frame 2" coupler	A frame 2" coupler	A frame 2" coupler	A frame 2" coupler	A frame 2" coupler	A frame 2" coupler	A frame 2" coupler
Swivel Tongue Jack	800# capacity	800# capacity	800# capacity	800# capacity	800# capacity	800# capacity	800# capacity	800# capacity
Tailgate	full width 44" long	full width 44" long	full width 44" long	full width 44" long	full width 44" long	2-69" ramps standard	R=75.75" x 59" S=69.25 x 59"	2-69" ramps standard

MODELS 6310H-7210H

STANDARD FEATURES

	6310H	6314H	6810H	6812H	7210H
Overall Width x Length	83.5" x 168"	84.5" x 218"	93" x 167"	93" x 196"	93" x 170"
Bed Width x Length	62.5" x 120"	63" x 168"	68" x 117"	68" x 144"	72" x 120"
Bed Height	18"	18"	18"	18"	18"
Weight	460#	500#	490#	510#	500#
GVWR	2990#	2990#	2990#	2990#	2990#
Rubber Torsion Axle	1-3000#	1-3000#	1-3000#	1-3000#	1-3000#
Wheels	14" aluminum	14" aluminum	14" aluminum	14" aluminum	14" aluminum
Side Stake Pockets	4 total 2 per side	6 total 3 per side	4 total 2 per side	6 total 3 per side	4 total 2 per side
Aluminum Tongue	A frame 2" coupler	A frame 2" coupler	A frame 2" coupler	A frame 2" coupler	A frame 2" coupler
Swivel Tongue Jack	800# capacity	800# capacity	800# capacity	800# capacity	800# capacity
Tailgate	full width 44" long	full width 44" long	full width 44" long	full width 44" long	full width 44" long

Flatbed Trailers - Single Axle



638

shown w/optional bifold tailgate



6810H

shown w/optional 12" solid side rack set & bifold tailgate



6810T

shown w/optional aluminum wheels



7712H

shown w/optional 24" sides



LED Lights - Standard on all Trailers

7818

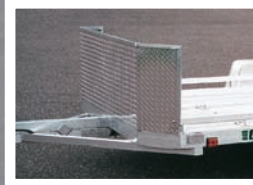
Fenders remove for loading cars



8118



OPTIONAL FEATURES



**Aluminum
Rock Guard
All Models**



**Stainless Steel
Recessed
Tie Rings
All Models**



**Bifold Tailgate
All Models**



**Motorcycle
Brackets
All Models**



**Tongue Handle
All Models**



**Front Storage Box
641-7800-8200
Series**

MODELS 6316-8118

STANDARD FEATURES

	6316	7812	7814	7816	7818	8118
Overall Width x Length	84.5" x 242"	101.5" x 196"	101.5" x 220"	101.5" x 244"	101.5" x 268"	101.5" x 267"
Bed Width x Length	63 x 192"	78 x 144"	78 x 168"	78 x 192"	78 x 216"	81 x 216"
Bed Height	16.25"	18.5"	18.5"	18.5"	18.5"	18.5"
Weight	600#	900#	1000#	1050#	1100#	1360#
GVWR	2990#	7000#	7000#	7000#	7000#	7000#
Rubber Torsion Brakes both Axles	2-2000#	2-3500#	2-3500#	2-3500#	2-3500#	2-3500#
Wheels	13" aluminum	14" aluminum	14" aluminum	14" aluminum	14" aluminum	14" aluminum
Aluminum Fenders	removable	removable	removable	removable	removable	welded
Side Stake Pockets	6 total 3 per side	4 total 2 per side	6 total 3 per side	6 total 3 per side	6 total 3 per side	6 tie loops 3 per side
Ramps/Tailgate	Full width 39" long	2-5' pull out ramps	2-5' pull out ramps	2-5' pull out ramps	2-5' pull out ramps	5-75.75"x59" 5-69.25"x59"
Aluminum Tongue Coupler	A frame 2" Coupler	A frame 2" coupler	A frame 2" coupler	A frame 2" coupler	A frame 2" coupler	A-Frame 2" Coupler
Swivel Tongue Jack	800# Capacity	1200# capacity	1200# capacity	1200# capacity	1200# capacity	1200# Capacity
Aluminum Rear Stabilizer Jacks	optional	2-1 per side	2-1 per side	2-1 per side	2-1 per side	3 total
Breakaway switch with battery	optional w/brakes	standard	standard	standard	standard	standard

8218
Fenders remove for loading cars



8218 Tilt
Fenders remove for loading cars



20" stationary plus 18' or 20' tilt bed

MODELS 8212-8224

STANDARD FEATURES

	8212	8214	8216	8218	8220	8222H	8224H
Overall Width x Length	101.5" x 196"	101.5" x 220"	101.5" x 244"	101.5" x 268"	101.5" x 292"	101.5" x 316"	101.5" x 340"
Bed Width x Length	82x144"	82x168"	82x192"	82x216"	82x240"	82x264"	82x288"
Bed Height	20"	20"	20"	20"	20"	20.75"	20.75"
Weight	1180#	1230#	1280#	1350#	1500#	1650#	1750#
GVWR	7000#	7000#	7000#	7000#	7000#	9600#	9600#
Rubber Torsion Brakes Both Axles	2-3500# optional 2-4800#	2-3500# optional 2-4800#	2-3500# optional 2-4800#	2-3500# optional 2-4800#	2-3500# optional 2-4800#	2-4800#	2-4800#
Wheels	14" aluminum	14" aluminum	14" aluminum	14" aluminum	14" aluminum	15" aluminum	15" aluminum
Aluminum Fenders	removable	removable	removable	removable	removable	removable	removable
Side Stake Pockets	4 total 2 per side	6 total 3 per side	6 total 3 per side	6 total 3 per side	6 total 3 per side	8 total 4 per side	8 total 4 per side
Ramps	2-5' pull out	2-6' pull out	2-6' pull out	2-6' pull out	2-6' pull out	2-6' pull out	2-6' pull out
Aluminum Tongue	A frame 2-5/16" coupler	A frame 2-5/16" coupler	A frame 2-5/16" coupler	A frame 2-5/16" coupler	A frame 2-5/16" coupler	A frame 44.5" long 2-5/16" coupler	A frame 44.5" long 2-5/16" coupler
Swivel Tongue Jack	1200# capacity	1200# capacity	1200# capacity	1200# capacity	1200# capacity	double wheel 1200# capacity	double wheel 1200# capacity
Aluminum Rear Stabilizer Jacks	2-1 per side	2-1 per side	2-1 per side	2-1 per side	2-1 per side	2-1 per side	2-1 per side
Breakaway Switch with battery	standard	standard	standard	standard	standard	standard	standard

MODELS 8218, 8220 Tilt

STANDARD FEATURES

	8218 tilt	8220 tilt
Overall Width x Length	101.5" x 294"	101.5" x 319"
Bed Width x Length	82" x 219"	82" x 243.5"
Bed Height	20.75"	20.75"
Weight	1350#	1500#
GVWR	7000#	7000#
Rubber Torsion Brakes Both Axles	2-3500# optional 2-4800#	2-3500# optional 2-4800#
Wheels	14" aluminum 15" optional	14" aluminum 15" optional
Aluminum Fenders	removable	removable
Side Stake Pockets	8 total 4 per side	8 total 4 per side
Aluminum Tongue	A frame 44.5" long 2-5/16" coupler	A frame 44.5" long 2-5/16" coupler
Padded Tongue Jack	2500#	2500#
Breakaway Switch with battery	standard	standard



LED Lights - Standard on all Trailers

Built to last.

1020
shown w/optional rock guard



8214WB
shown w/optional rock guard
and tool box



		MODELS 1020-1026			
		1020	1022	1024	1026
STANDARD FEATURES	Overall Width x Length	101.5" x 294"	101.5" x 318"	101.5" x 342"	101.5" x 366"
	Bed Width x Length	101.5" x 240"	101.5" x 264"	101.5" x 288"	101.5" x 312"
	Bed Height	30.5"	30.5"	30.5"	30.5"
	Weight	1500#	1575#	1650#	1725#
	GVWR	7000#	7000#	7000#	7000#
	Rubber Torsion Brakes Both Axles	2-3500# optional 2-4800#	2-3500# optional 2-4800#	2-3500# optional 2-4800#	2-3500# optional 2-4800#
	Wheels	14" aluminum	14" aluminum	14" aluminum	14" aluminum
	Dove Tail	48" long 8" drop	48" long 8" drop	48" long 8" drop	48" long 8" drop
	Deck Style	full railing or rub rail	full railing or rub rail	full railing or rub rail	full railing or rub rail
	Tailgates/Ramps	2-bifolds or 2-6' ramps	2-bifolds or 2-6' ramps	2-bifolds or 2-6' ramps	2-bifolds or 2-6' ramps
	Aluminum Tongue	A frame 2-5/16" coupler	A frame 2-5/16" coupler	A frame 2-5/16" coupler	A frame 2-5/16" coupler
	Swivel Tongue Jack	1200# capacity	1200# capacity	1200# capacity	1200# capacity
	Aluminum Rear Stabilizer Jacks	2-1 per side	2-1 per side	2-1 per side	2-1 per side
	Breakaway Switch with battery	standard	standard	standard	standard

		MODEL 8212WB-8222WB					
		8212WB	8214WB	8216WB	8218WB	8220WB	8222WB
STANDARD FEATURES	Overall Width x Length	101.5" x 196"	101.5" x 220"	101.5" x 244"	101.5" x 268"	101.5" x 292"	101.5" x 316"
	Bed Width	82" between fenders 96" front & back	82" between fenders 96" front & back	82" between fenders 96" front & back	82" between fenders 96" front & back	82" between fenders 96" front & back	82" between fenders 96" front & back
	Bed Length	144"	168"	192"	216"	240"	264"
	Bed Height	22.5"	22.5"	22.5"	22.5"	22.5"	22.5"
	Weight	1180#	1230#	1280#	1350#	1500#	1650#
	GVWR	7000#	7000#	7000#	7000#	7000#	7000#
	Rubber Torsion Brakes Both Axles	2-3500# optional 2-4800#	2-3500# optional 2-4800#	2-3500# optional 2-4800#	2-3500# optional 2-4800#	2-3500# optional 2-4800#	2-3500# optional 2-4800#
	Wheels	14" aluminum	14" aluminum	14" aluminum	14" aluminum	14" aluminum	14" aluminum
	Aluminum Fenders	welded	welded	welded	welded	welded	welded
	Side Stake Pockets	10 total 5/8" welded behind rub rail	10 total 5/8" welded behind rub rail	10 total 5/8" welded behind rub rail	10 total 5/8" welded behind rub rail	10 total 5/8" welded behind rub rail	10 total 5/8" welded behind rub rail
	Ramps	2-5' pull out	2-6' pull out	2-6' pull out	2-6' pull out	2-6' pull out	2-6' pull out
	Aluminum Tongue	A frame 2-5/16" coupler	A frame 2-5/16" coupler	A frame 2-5/16" coupler	A frame 2-5/16" coupler	A frame 2-5/16" coupler	A frame 2-5/16" coupler
	Swivel Tongue Jack	1200# capacity	1200# capacity	1200# capacity	1200# capacity	1200# capacity	1200# capacity
	Aluminum Rear Stabilizer Jacks	2-1 per side	2-1 per side	2-1 per side	2-1 per side	2-1 per side	2-1 per side
	Breakaway switch with battery	standard	standard	standard	standard	standard	standard

A212 ATV



Special Feature—Removable end and side gates convert to ramps for easy loading of ATVs.

6314H

shown w/optional bifold tailgate



A315 ATV



shown with optional rear ramp

		ATV/UTILITY MODELS		
		A212	A315	6314H
STANDARD FEATURES	Overall Width x Length	85" x 195"	93" x 246"	84.5" x 218"
	Bed Width & Length	79.5 x 144"	89 x 190"	63 x 168"
	Bed Height	21"	22.25"	18"
	Weight	560#	700#	500#
	GVWR	2990#	2990#	2990#
	Rubber Torsion Axle	1-3000#	1-3500#	1-3000#
	Wheels	14" aluminum	14" aluminum	14" aluminum
	Tie Down Loops	8	8	optional
	Ramps	4 total 2'-41" 2'-69"	4-69"	N/A
	Aluminum Tongue	A frame 2" coupler	A frame 2" coupler	A frame 2" coupler
	Swivel Tongue Jack	800# capacity	800# capacity	800# capacity
	Tailgate	optional	optional	full width 39" long

Count on ALUMA trailers to get you on the road to adventure quickly and reliably.



LED Lights - Standard on all Trailers

A8816 ATV



A888 ATV

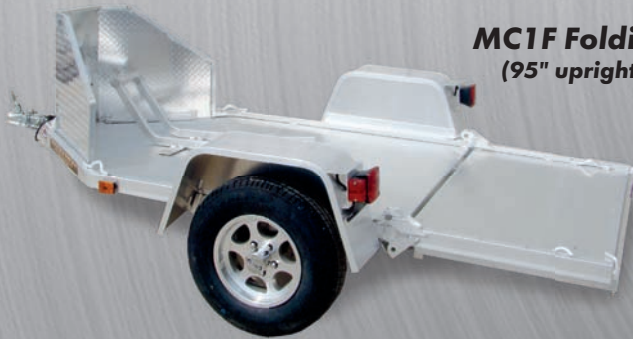


DECK OVER ATV/UTILITY MODELS

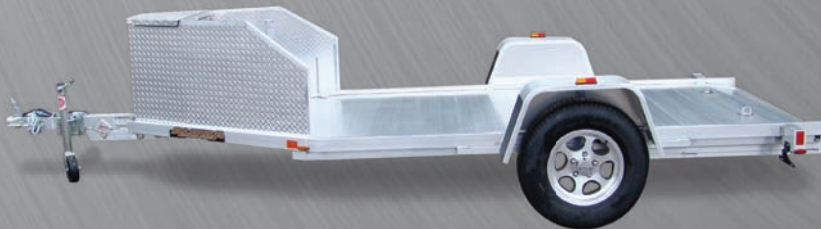
	A888	A8812	A8816	
STANDARD FEATURES	Overall Width x Length	88" x 145"	88" x 199"	88" x 243"
	Bed Width x Length	88" x 100"	88" x 154"	88" x 198"
	Bed Height	29.5"	29.5"	29.5"
	Weight	400#	570#	760#
	GVWR	2200#	2990#	2990#
	Rubber Torsion Axle	1-2200#	1-3500#	2-2200# standard brakes
	Wheels	13" steel	13" steel	13" steel
	Tie-Down Loops	6	8	10
	Ramps	2-69"	4-69"	4-69"
	Aluminum Tongue Swivel Tongue Jack	A-frame 2" coupler optional	A-frame 2" coupler 800# capacity	A-frame 2" coupler 800# capacity



Motorcycle Trailers



MC1F Folding
(95" upright)



TK1



MC2F Folding
(89.5" upright)



MC210



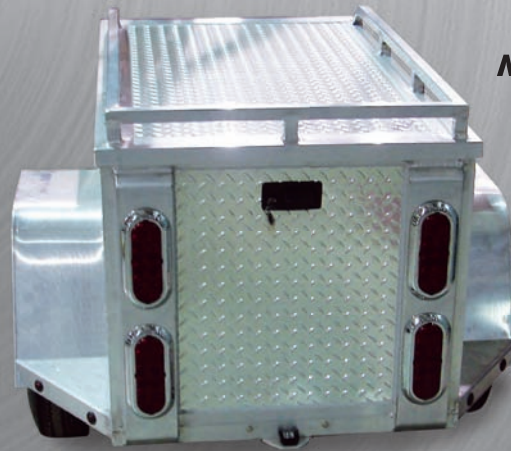
MC10
shown w/optional jack

MOTORCYCLE/ UTILITY MODELS					
	MC10	MC1F	MC210	MC2F	TK1
Overall Width x Length	74.5" x 174.5"	74.5" x 125.5" stands 95"	101.5" x 174.5"	94" x stands 89.5"	86" x 186"
Bed Width x Length	51 x 137"	51 x 106"	77 x 137"	72 x 115"	63 x 132"
Bed Height	16"	16.25"	18"	18.5"	17"
Weight	390#	380#	540#	520#	520#
GVWR	2000#	2000#	2990#	2990#	2990#
Rubber Torsion Axle	1-2000#	1-2000#	1-3000#	1-3000#	1-3000#
Wheels	13" aluminum	13" aluminum	14" aluminum	14" aluminum	14" aluminum
Tie Down Loops	4	4	8 stainless steel recessed	5	4 stainless steel recessed
Ramps	45" wide 45.5" long	27 5/8" wide 47.5" long	45" wide 47.5" long	27 5/8" wide 47.5" long	57" wide 45.5" long
Aluminum Tongue	straight 2" coupler	straight 2" coupler	straight 2" coupler	straight foldable 2" coupler	straight 2" coupler
Swivel Tongue Jack	optional	optional	800# capacity	800# capacity	800# capacity
Motorcycle Bracket	1-3'	1-3'	2-3'	2-3'	1-3'
Aluminum Shield	24" tall	24" tall	24" tall	24" tall	24" tall with storage box

STANDARD FEATURES



LED Lights - Standard on all Trailers



MCTXL

Color choices for all enclosed trailers



MCT



MCTXL

MOTORCYCLE TRAILERS

STANDARD FEATURES

	MCT	MCTXL
Overall Width x Length	45" x 85"	45" x 97"
Bed Width x Length	27" x 45"	27" x 57"
Interior Height	21.5"	21.5"
Bed Height	14"	14"
Coupler Size	1-7/8"	1-7/8"
Weight	200#	225#
Rubber Torsion Axle	1-600#	1-600#
Wheels	12" aluminum	12" aluminum
Lighting	LED standard 5 rnd harness	LED standard 5 rnd harness
Cooler Tray and Kick Stand	standard	standard



PWC1 Single Place Watercraft Trailer
shown w/optional jack

PWC2 Two-Place Watercraft Trailer



STANDARD FEATURES

PWC/RAFT MODELS

	PWC1	PWC2	8414RT
Overall Width x Length	63" x 161"	101" x 181"	84" x 220"
Bed Width	46" between fenders	82" between fenders	84"
Bed Length	1-72" adjustable bunk	2-72" adjustable bunk	168"
Bed Height	18" to side frame	18" to side frame	29.5"
Weight	245#	413#	570#
GVWR	1500#	2700#	2200#
Axle	1-1500# spring	1-2700# spring	1-2200# rubber torsion
Wheels	12" steel	13" steel	13" steel
Adjustable Winch	1	2	1
Tie Down Loops	2	3	10
Rear Roller	N/A	N/A	full width
Swivel Tongue Jack	optional	800# capacity	800# capacity
Aluminum Tongue	straight 2" coupler	straight 2" coupler	A frame 2" coupler



8414 RT Raft Trailer



LED Lights - Standard on all Trailers



AE716TAM

AE722TAV



8612 C

8612C All Sport Trailer

STANDARD FEATURES

	8612C
Overall Width x Length	102" x 205"
Overall Height	101"
Bed Width	100"
Bed Height	32"
Interior Height	69"
Weight	1100#
GVWR	2990 (no brakes)
Coupler	2"
Rubber Torsion	3000"
Wheels	14" steel
Front Door	24" X 48"
Rear Door	aluminum ramp with cable assist
Rear opening	W=95.5" H=65.5"

Single Axle Enclosed Trailers



AE610



AE58



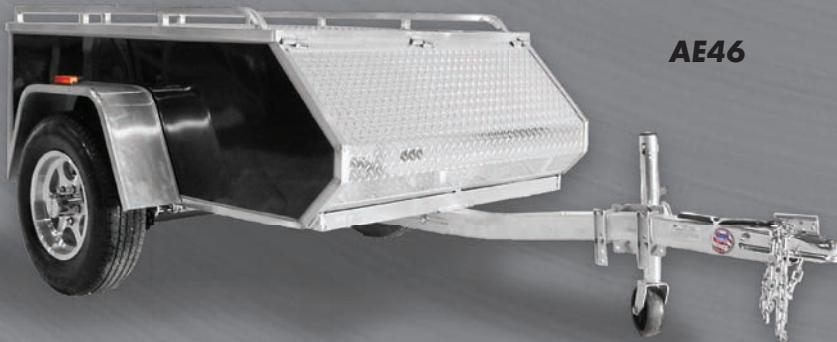
ENCLOSED - SINGLE AXLE

	AE46	AE58	AE510	AE610	AE612	AE710	AE712
Overall Width x Length	64" x 120"	81" x 150"	81" x 176"	93" x 182"	93" x 206"	101" x 188"	101" x 212"
Overall Height	39"	80"	80"	92"	92"	92"	92"
Bed Width	48"	57.5"	57.5"	69.5"	69.5"	81.5"	81.5"
Bed length not including V-Nose	72"	92"	116"	116"	140"	116"	140"
V-Nose	N/A	30" standard	30" standard	36" standard	36" standard	42" standard	42" standard
Bed Height	14.5"	18.25"	18.25"	18.25"	18.25"	19.25"	19.25"
Interior Height	21"	60"	60"	72"	72"	72"	72"
Weight	340#	790#	985#	1120#	1250#	1275#	1385#
GVWR	1200#	2990#	2990#	2990#	2990#	2990#	2990#
Rubber Torsion Axle	1-1200#	1-3000#	1-3500#	1-3500#	1-3500#	1-3500#	1-3500#
Wheels	13" aluminum	14" aluminum	14" aluminum	14" aluminum	14" aluminum	14" aluminum	14" aluminum
Side Door	Lockable Lid	optional	optional	32" standard	32" standard	32" standard	32" standard
Rear Door	N/A	double doors or ramp	double doors or ramp	double doors or ramp	double doors or ramp	double doors or ramp	double doors or ramp
Rear Opening	N/A	w=51.5" h=56.25"	w=51.5" h=56.25"	w=63.5" h=68.25"	w=63.5" h=68.25"	w=75.5" h=68.25"	w=75.5" h=68.25"

STANDARD FEATURES

STANDARD FEATURES

- Extruded aluminum floor
- Interior light with switch
- V-Nose with rock guard
- 5/16" plywood-lined walls to ceiling
- LED lighting
- Swivel tongue jack 800# capacity
- Rivetless .030 aluminum skin
- 2" coupler with safety chains
- One-piece aluminum roof



AE46



LED Lights - Standard on all Trailers



AE614TA



AE714TA

ENCLOSED - TANDEM AXLE

	AE612TA	AE614TA	AE616TA	AE618TA	AE712TA	AE714TA	AE716TA	AE718TA
Overall Width x Length	93" x 216"	93" x 236"	93" x 260"	93" x 290"	101" x 218"	101" x 242"	101" x 266"	101" x 290"
Overall Height	92"	92"	92"	92"	93"	93"	93"	93"
Bed Width	69.5"	69.5"	69.5"	69.5"	81.5"	81.5"	81.5"	81.5"
Bed length not including V-Nose	142"	165"	190"	214"	142"	165"	190"	214"
V-Nose	36" standard	36" standard	36" standard	36" standard	42" standard	42" standard	42" standard	42" standard
Bed Height	18.25"	18.25"	18.25"	18.25"	19.25"	19.25"	19.25"	19.25"
Interior Height	72"	72"	72"	72"	72"	72"	72"	72"
Weight	1660#	1770#	1880#	1990#	1700#	1850#	2000#	2150#
GVWR	7000#	7000#	7000#	7000#	7000#	7000#	7000#	7000#
Rubber Torsion Brakes Both Axles	2-3500#	2-3500#	2-3500#	2-3500#	2-3500#	2-3500#	2-3500#	2-3500#
Wheels	14" aluminum	14" aluminum	14" aluminum	14" aluminum	14" aluminum	14" aluminum	14" aluminum	14" aluminum
Side Door	32" standard	32" standard	32" standard	32" standard	32" standard	32" standard	32" standard	32" standard
Rear Door	double doors or ramp	double doors or ramp	double doors or ramp	double doors or ramp	double doors or ramp	double doors or ramp	double doors or ramp	double doors or ramp
Rear Opening	w=63.5" h=68.25"	w=63.5" h=68.25"	w=63.5" h=68.25"	w=63.5" h=68.25"	w=75.5" h=68.25"	w=75.5" h=68.25"	w=75.5" h=68.25"	w=75.5" h=68.25"

STANDARD FEATURES

STANDARD FEATURES

- Extruded aluminum floor
- Interior light with switch
- V-Nose with rock guard
- 5/16" plywood-lined walls to ceiling
- LED lighting
- Swivel tongue jack 1200# capacity
- Rivetless .030 aluminum skin
- 2" coupler with safety chains
- One-piece aluminum roof



*shown with optional spare tire,
spare tire mount and
Lock N Load wheel chocks*

SPORT PACKAGE STANDARD FEATURES

- Extruded aluminum floor
- Interior light with switch
- V-Nose with rock guard
- 32" side door
- 5/16" white poly coated lined walls to ceiling
- LED lighting
- Swivel tongue jack 1200# capacity
- Rivetless .030 aluminum skin
- 2" coupler with safety chains
- One-piece aluminum roof
- Aluminum rear ramp door with cable assist
- Crank-up roof vent or (2) side vents
- Rear stabilizer legs
- (4) or (6) Flush mount tie rings

Available in 5', 6', & 7' Widths

Single Axle Enclosed Trailer



Tandem Axle Enclosed Trailer



LED Lights - Standard on all Trailers



AER Inside Trailer

*shown with optional E-Trac,
white lining upgrade on walls,
and 48" escape door*

8'6" WIDE TANDEM AXLE ENCLOSED TRAILERS					
	AER816TA	AER818TA	AER820TA	AER822TA	AER824TA
Overall Width x Length	102" x 270"	102" x 294"	102" x 319"	102" x 342"	102" x 366"
Overall Height	103.5"	103.5"	103.5"	103.5"	103.5"
Bed Width	99" wall to wall	99" wall to wall	99" wall to wall	99" wall to wall	99" wall to wall
Bed Width between Fenders	83"	83"	83"	83"	83"
Bed Length not including V-Nose	192"	216"	240"	264"	288"
V-Nose	46" standard	46" standard	46" standard	46" standard	46" standard
Bed Height	23.75"	23.75"	23.75"	23.75"	23.75"
Interior Height	78"	78"	78"	78"	78"
Weight	2580#	2760#	2940#	3120#	3300#
GVWR	9600#	9600#	9600#	9600#	9600#
Coupler	2 5/16"	2 5/16"	2 5/16"	2 5/16"	2 5/16"
Rubber Torsion Brakes Both Axles	2-4800#	2-4800#	2-4800#	2-4800#	2-4800#
Wheels	15" aluminum	15" aluminum	15" aluminum	15" aluminum	15" aluminum
Side Door	32" standard	32" standard	32" standard	32" standard	32" standard
Rear Door	aluminum ramp with cable assist	aluminum ramp with cable assist	aluminum ramp with cable assist	aluminum ramp with cable assist	aluminum ramp with cable assist
Rear Opening	w=90.75" h=78.25"	w=90.75" h=78.25"	w=90.75" h=78.25"	w=90.75" h=78.25"	w=90.75" h=78.25"
Dovetail	3' 3/4" dovetail	3' 3/4" dovetail	3' 3/4" dovetail	3' 3/4" dovetail	3' 3/4" dovetail

AER820TA



7'-Wide Enclosed Snow/Sport Trailers



7' WIDE SNOWMOBILE/SPORT TRAILER



STANDARD FEATURES

	AE714TAV	AE718TAV	AE722TAV	AE724TAV
Overall Width x Length	102" x 260"	102" x 306"	102" x 354"	102" x 378"
Overall Height	93"	93"	93"	93"
Bed Width	81.75"	81.75"	81.75"	81.75"
Bed Length not including V-Nose	168"	216"	264"	288"
V-Nose	60" standard	60" standard	60" standard	60" standard
Bed Height	19.5"	19.5"	19.5"	19.5"
Interior Height	72"	72"	72"	72"
Weight	2020#	2220#	2420#	2570#
GVWR	7000#	7000#	7000#	7000#
Coupler	2 5/16"	2 5/16"	2 5/16"	2 5/16"
Rubber Torsion Brakes Both Axles	2-3500#	2-3500#	2-3500#	2-3500#
Wheels	14" aluminum	14" aluminum	14" aluminum	14" aluminum
Side Door	32" standard	32" standard	32" standard	32" standard
Front Ramp Door	w=60.75" h=64.5"	w=60.75" h=64.5"	w=60.75" h=64.5"	w=60.75" h=64.5"
Rear Ramp Opening	w=75.5" h=67.5"	w=75.5" h=67.5"	w=75.5" h=67.5"	w=75.5" h=67.5"
Front & Rear Ramps	aluminum ramp with cable assist	aluminum ramp with cable assist	aluminum ramp with cable assist	aluminum ramp with cable assist

STANDARD FEATURES

- Full-length slider channel
- 5/8" marine grade plywood floor
- 2 interior lights with switch
- Swivel tongue jack 1200# capacity
- 5/16" plywood walls lined to ceiling
- LED lighting
- Rivetless .030 aluminum skin
- One-piece aluminum roof
- Snowmobile ski tie-downs

Enclosed Snowmobile/Sport Trailer



LED Lights - Standard on all Trailers



Enclosed Snowmobile Trailer Interior

8'6" WIDE TANDEM SNOWMOBILE/SPORT TRAILER		
	AE8620	AE8624
Overall Width x Length	102" x 320"	102" x 370"
Overall Height	98"	98"
Bed Width	98.5"	98.5"
Bed Length not including V-Nose	240"	288"
V-Nose	60" standard	60" standard
Bed Height	31"	31"
Interior Height	66"	66"
Weight	2600#	2900#
GVWR	7000#	7000#
Coupler	2 5/16"	2 5/16"
Rubber Torsion Brakes Both Axles	2-3500#	2-3500#
Wheels	14" aluminum	14" aluminum
Side Door	32" standard	32" standard
Front Ramp Door	w=57.75" h=58.5"	w=57.75" h=58.5"
Rear Ramp Opening	w=92" h=65"	w=92" h=65"
Front & Rear Ramps	aluminum ramp with cable assist	aluminum ramp with cable assist

STANDARD FEATURES

AE8624

Enclosed Snowmobile/Sport Trailer



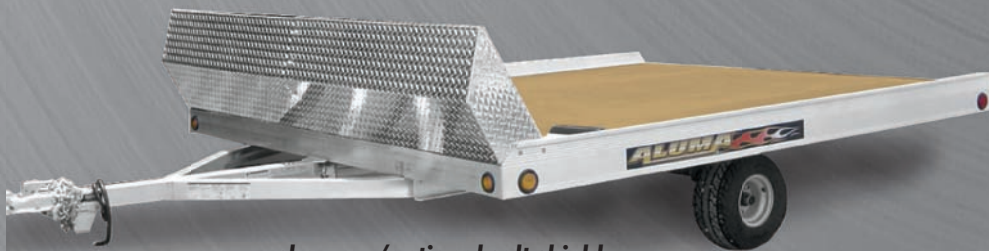
shown with optional 6" ATP down sides

DRIVE ON/OFF SNOWMOBILE TRAILERS

STANDARD FEATURES

- Full-length slider channels
- 5/8" marine grade plywood decking
- Rubber mounted sealed lights
- Aluminum ski tie-down bars

8610T & 8612T



shown w/optional salt shield

TILT BED SNOWMOBILE TRAILERS

STANDARD FEATURES		8605	8610T	8612T
	Overall Width x Length	50" x 170"	102" x 170"	102" x 194"
	Bed Width x Length	50" x 120"	100" x 120"	100" x 144"
	Bed Height	24.5"	24.5"	24.5"
	Weight	300#	425#	460#
	GVWR	1200#	2200#	2200#
	Rubber Torsion Axle	1-1200#	1-2200#	1-2200#
	Wheels	10" steel	10" steel	10" steel
	Swivel Tongue Jack	optional	optional	optional
	Tongue	A frame 2" coupler	A frame 2" coupler	A frame 2" coupler
Floor	5/8" marine tech plywood	5/8" marine tech plywood	5/8" marine tech plywood	

Options are Available for all Model Numbers

OPTIONS	
	recessed tie downs
	spare tire mounting bracket
	swivel tongue jack
	electric/surge brakes
	tongue handle
	spare tire and galphrite steel wheels
	20.5x8.5x10" 6-ply 1105# cap./tire ST175/80R13 4-ply 1340# cap./tire

2 PLACE DRIVE ON/DRIVE OFF

STANDARD FEATURES		8610D	8612D
	Overall Width x Length	102" x 191"	102" x 215"
	Bed Width x Length	100" x 120"	100" x 144"
	Bed Height	24.5"	26"
	Weight	450#	480#
	GVWR	2200#	2200#
	Rubber Torsion Axles	1-2200#	1-2200#
	Wheels	10" steel	10" steel
	Swivel Tongue Jack	optional	optional
	Tongue	A frame 2" ball	A frame 2" ball
Floor	5/8" marine tech plywood	5/8" marine tech plywood	
Ramp	54" x 72" storage underneath	54" x 72" storage underneath	
Aluminum Salt Shield	optional	optional	

8612

shown w/optional combination salt shield & drive-off ramp



LED Lights - Standard on all Trailers



3 PLACE DRIVE ON/DRIVE OFF

STANDARD FEATURES		8614	8616
	Overall Width x Length	102" x 240"	102" x 264"
	Bed Width x Length	100" x 168"	100" x 192"
	Bed Height	26"	26"
	Weight	850#	875#
	GVWR	2990#	4400#
	Rubber Torsion Axles	2-2200#	2-2200#
	Brakes Both Axles	optional	standard
	Wheels	10" steel	10" steel
	Swivel Tongue Jack	750# capacity	750# capacity
	Tongue	A frame 2" coupler	A frame 2" coupler
	Floor	5/8" marine tech plywood	5/8" marine tech plywood
	Ramp	54" x 72" storage underneath	54" x 72" storage underneath
	Aluminum Salt Shield	optional	optional



8614
shown with optional 13" aluminum wheels and combo shield



8620 Snowmobile Trailer
shown with optional combination salt shield & drive-off ramp

POPULAR OPTIONS

- Tilt bed salt shield
- Combo shield for drive-on/ drive off
- 13" or 15" wheel upgrades in either steel or aluminum wheels
- Recessed tie rings
- Spare tire
- Spare tire mounting bracket
- LED lights
- Tongue handle

4 PLACE DRIVE ON/DRIVE OFF

STANDARD FEATURES		8618	8620	8622
	Overall Width x Length	102" x 288"	102" x 312"	102" x 336"
	Bed Width x Length	100" x 216"	100" x 240"	100" x 264"
	Bed Height	28"	28"	28"
	Weight	925#	1025#	1105#
	GVWR	4400#	4400#	4400#
	Rubber Torsion Brakes both Axles	2-2200#	2-2200#	2-2200#
	Wheels	10" steel	10" steel	10" steel
	Swivel Tongue Jack	750# capacity	750# capacity	750# capacity
	Tongue	A frame 2" coupler	A frame 2" coupler	A frame 2" coupler
	Floor	5/8" marine tech plywood	5/8" marine tech plywood	5/8" marine tech plywood
	Ramp	54" x 72" storage underneath	54" x 72" storage underneath	54" x 72" storage underneath
	Aluminum Salt Shield	optional	optional	optional

STANDARD FEATURES

- Extruded aluminum floor with drop rear skirt
- 1/4" x 2" Rub rail with Stake pockets
- Headache rack with sealed beam lights
- 3" channel main stringers adjustable to fit different models of trucks
- Recessed sealed beam lights
2 taillights; 7 clearance lights
- License plate light
- Pre-wired and lights installed

OPTIONS

- Gooseneck Hitch opening with removable door
- Backup light
- Sides and Tailgate
- LED Upgrade

SPECIFICATIONS

	Model # 6600/6800	Model # 8100	Model # 9000	Model # 9600
BED SIZE & WEIGHT	66" x 77" 170#			
	66" x 87" 180#	81" x 87" 275#		
	68" x 87" 187#			
		81" x 96" 285#	90" x 96" 298#	96" x 96" 307#
		81" x 106" 295#	90" x 106" 310#	96" x 106" 320#
		81" x 115" 305#	90" x 115" 322#	96" x 115" 332#
		81" x 125" 316#	90" x 125" 333#	96" x 125" 345#
			90" x 144" 345#	96" x 144" 358#
				96" x 168" 380#
				96" x 192" 400#



Shown with:

- Sides and Tailgate
- 1/4" x 2" Rub rail with Stake pockets

Truck Bed with Gooseneck and Trap Door



*For more information, contact your local dealer.
Specifications subject to change without notice.*



LED Lights - Standard on all Trailers



"All-Aluminum Trailers"

About Aluma

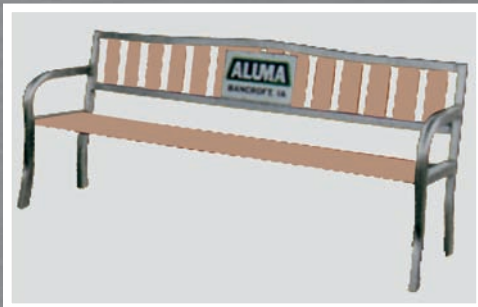
In 1992 Aluma was born from a few requests from friends to have a light trailer to haul their golf carts on. Aluma started in a small building with 5 people and has grown to a 72,000-square-foot building in Bancroft, Iowa. We currently sell in all 50 states and Canada through dealers. We may have grown larger in size, but we still have the small-town values and pride shown in every trailer that we produce. We back each trailer with our 5-year all-inclusive warranty. We are a family owned and operated business proud to build products with Quality built-in.



THEN



NOW



Picnic tables 6', 8' & 4-sided and park bench available in tan, forest green and pewter.