

HIDEOUT
HORNET
PLATINUM

HORNET

PLATINUM

HIDEOUT

by Keystone

All New For 2011!



www.keystone-hornet.com

Go RVing

www.keystone-hideout.com



HORNET PLATINUM

Model 31RBDS in Saddlebrook Decor

Saddlebrook

Green Leaf

Brookstone

The 31RBDS exemplifies the large amount of storage space found in Hornet kitchens. Here you can see the 3 large storage drawers complete with metal ball bearing drawer glides, tall overhead cabinets capable of storing large cereal boxes and oversized items. Hornet's kitchen comes complete with raised panel solid wood cabinet doors, oversized kitchen sink with high-rise faucet, and large pantry. Our matching kitchen appliances coordinate beautifully with our elegant kitchen. In addition, Hornet's entertainment center comes complete with 26" LCD TV, DVD Player and iPod port, surround sound speakers and exterior speakers. In several models as shown here in the 31RBDS, the 26" LCD TV swivels 180 degrees for viewing in the living room or bedroom.



Model 31RBDS in Saddlebrook Decor

Hornet's rich wood tones, elegant interior decors and well designed layouts are sure to enhance your camping experience. Our Mega Slide System, which is 11% larger than the competitors, gives you a king size dinette, EZ up and portable dinette table, 74" Air Bed Sleeper Sofa and a flexible rolling ottoman that can be used for extra seating at the dinette, coffee table for the sofa or simply an ottoman with storage. (Standard on 4 models).



The bunk room in the Hornet 31 RBDS is designed with your kids comfort in mind. This room features the Hornet Lounge which comfortably seats your kids while gaming or simply hanging out reading a book. The room expands to sleep up to four and was designed specifically to be a kid's domain!

HORNET
PLATINUM

FIX Bed System

Available on Models 26RBS, 28BHS, 28RLS, 31RLDS and 31RBDS



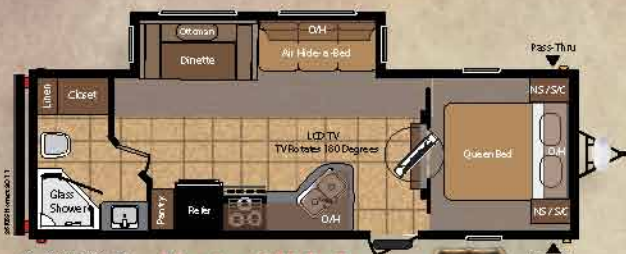
The Queen Bed Mattress is Made of High Density Foam. The Bedroom also has Night Stands with Drawers.



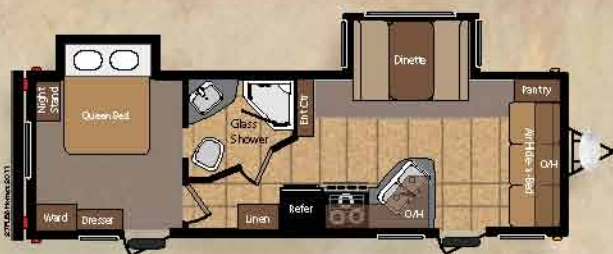
The Lounge Position is Designed for Comfortable Reading and Watching Television in Bed.



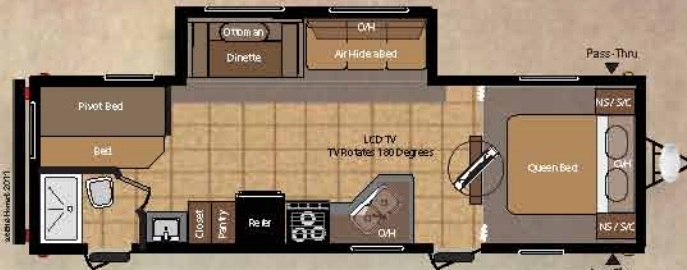
The Couch Position is Designed for Relaxing in Your Bonus Room.



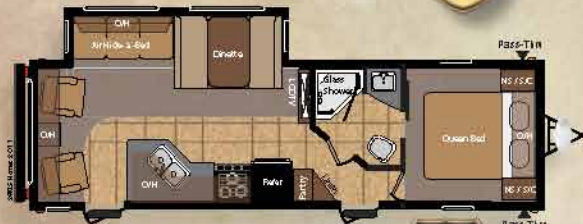
26RBS Mega Slide!



27FLBS



28BHS Mega Slide!



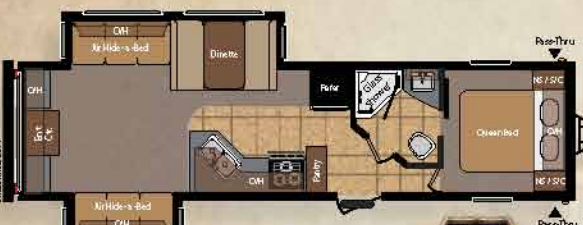
28RLS



30RKDS

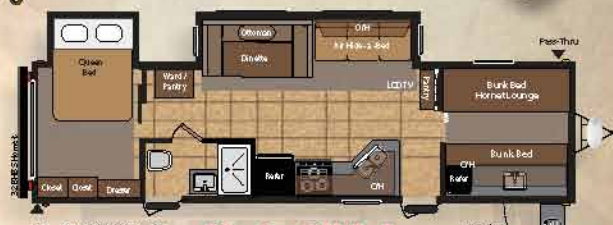


31RBDS Mega Slide!



31RLDS

HORNET PLATINUM



32BHBS Mega Slide!



Model Equipped with the F/X Bed System



Denotes an Outdoor Kitchen.



	26RBS	27FLBS	28BHS	28RLS	30RKDS	31RBDS	31RLDS	32BHBS
Shipping Weight	6363	6822	6705	6934	7380	7995	7435	8005
Carrying Capacity	3122	2908	3015	2796	2330	1625	2175	1705
Hitch Weight	685	930	920	930	910	820	810	910
Exterior Length	30' 1"	31'	31' 11"	32' 2"	33' 3"	35' 8"	34' 11"	33' 2"
Exterior Width	8'	8'	8'	8'	8'	8'	8'	8'
Exterior Height (Top A/C)	11' 3"	11' 5"	11' 3"	11' 5"	11' 5"	11' 5"	11' 5"	11' 5"
Fresh Water Capacity	45	45	45	45	45	45	45	45
Waste Water Capacity	38	38	32	38	38	38	38	38
Gray Water Capacity	38	38	70	38	76	38	38	38
LP Capacity (Lbs.)	60	60	60	60	60	60	60	60
Tire Size	225/75R 15D	225/75R 15D	225/75R 15D	225/75R 15D	225/75R 15D	225/75R 15D	225/75R 15D	225/75R 15D
Awning Length	16'	21'	21'	21'	21'	21'	16'	21'

Exterior

- + - Laminated Sidewalls
- + - Fiberglass Exterior
 - Walk on Roof
- + - Electric Awning
 - Flon Front Cap
 - Ladder Backers
 - Powder Coated I-Beam Frame
 - Cambered Chassis
 - Enclosed A-Frame
 - Four Heavy Duty Stab Jacks
- + - EZ Trax™ Suspension System
- + - Aluminum Rims
 - Easy Lube Axles
 - Full Length Outriggers
 - Dual Battery Rack
 - Two 30lbs Bottles with Cover and Auto Change Over
 - Awning-Color Coordinated
 - Heated and Enclosed Fresh Water
 - Fender Skirts
 - Diamond Plate Rock Guard
 - Exterior Speakers
 - Black Radius Window Frames
 - TV Antenna with Booster
 - Radio Antenna
 - Roof Vents
 - Cable Hook Up
 - GFI Electrical Outlets
 - Seamless One Piece Roof
 - Radius Skirting
 - Pass Thru Storage (Queen Bed)
 - Hose Storage In the Bumper
 - .024 Gauge Aluminum Siding
 - R-7 Insulation throughout
 - Rain Gutters with Down Spouts
 - Four Stage Slide Room Seals
 - Roto-Cast Seamless Holding Tanks
 - 12 Volt 55 Amp Converter
 - Hitch Light
 - Exterior Shower

Hornet Features

Interior

- + - 26" LCD TV
 - 13,500 BTU Air Conditioner
 - True Sound Entertainment System (with AM/FM, CD, DVD, MP3 Jack)
 - Foam Core Insulated A/C Ducts
 - Wall Paper Border
- + - 72" Slide Ceiling Height
 - 30K BTU Furnace
 - 6 Gallon Gas / Electric DSI Quick Recovery Water Heater with By-Pass Kit
 - Flex Pex Tubing w/10 Year Warranty
- + - 84" Interior Height
 - Wall switches for the Lights
 - RG6 Cable and Satellite
 - Sculptured Valances with Lambrequins
 - Panoramic Dinette Window
 - Deep Slide Room Cabinets
 - Shirt Closets
- + - 60 x 80 Air Mattress Hide-A-Bed Sofa

Bedroom

- TV Hook Up
- Bedspread-Master Bedroom
- Bed Storage with Air Shocks
- Four Cabinets Above the Queen Bed
- Reading Light

Bath

- + - Porcelain Toilet w/Foot Flush
 - Tub Surround
 - Shower Exhaust Fan
 - Large Medicine Cabinet
 - Robe and Towel Hooks

Kitchen

- 12 Volt Water Pump
- Three Drawers
- Silverware Divider
- Holding Tank Monitor Panel
- Oven
- Range with Hi-Output Burner
- 6 cu ft. Refrigerator (5 Settings)
- Exhaust Fan with Light
- Microwave
- Reversible Dinette Cushions
- Largest Residential Kitchen Sink
- High Rise Kitchen Faucet
- Waste Basket Storage
- + - Wood Core Cabinet Stiles (Pre-Drilled and Hand Screwed)
 - Mortise and Tenon Door Joints
 - Raised Panel Upper Cabinet Doors
 - Overhead Cabinets Above the Sink
 - Sink Cover
- + - Metal Ball Bearing Drawer Guides
 - Counter top Extensions
 - Night Shades

Safety

- Safety Chains
- Break Away Switch
- Electric Brakes on all Wheels
- Carbon Monoxide Detector
- L.P. Detector
- Smoke Detector
- Fire Extinguisher
- GFI Electrical Outlets
- Tinted Safety Glass
- Radial Tires
- EZ Trax™ Suspension System
- + - Extended Grab Handle

Luxury Package

- 26" Digital LCD Television
- Air Mattress Hide-a-Bed Sofa
- True Surround Sound Entertainment Center with DVD/CD and MP3 Hook Up
- 13,500 Btu Ducted Air Conditioner
- Radial Tires
- Outside Weather Proof Speakers
- Carbon Monoxide Detector
- Exterior Shower
- 6 Cu. Ft. Refrigerator
- Magnetic Black Panel Refrigerator Front
- Electric Patio Awning
- 6 Gallon Gas/Electric Water Heater with Direct Start Ignition
- Tinted Safety Glass
- Large Entry Grab Handle
- Plush Carpet Padding
- Radius Entry Doors
- Night Shades In the Living Room

Options

- - Aluminum Wheels
- - Spare Tire and Carrier
- - 15,000 Btu Air Conditioner
- - Rear Ladder
- - Platinum Package
- - Fiberglass Exterior Walls
- - Mega Slide
- - Twin Swivel Rockers IPO Sofa (31RLDS)
- - Free Standing Table and Chairs

- + - Defining its class
- - Mandatory

HORNET

PLATINUM

1. "One Piece" Rubber Roof
2. 3/8" OSB Roof Decking
3. Block Foam Insulation
4. Sturdy Collapsible Entry Handle
5. Hitch Light
6. Dual Battery Tray
7. Twin 30# L.P. Bottles with Cover
8. Pass Through Storage
9. 5/8" Seamless Floor Decking
10. Residential Carpet
11. Easy Lift Steps
12. 6 Gallon Gas / Electric DSI Water Heater
13. Easy Lube Axles
14. "Four Point" Stabilizer Jacks
15. Diamond Plate Protector
16. Black Framed, Tinted Safety Glass Windows
17. Rain Gutter with Down Spouts
18. Exterior Speakers
19. Color Matched Electric Awning
20. 13,500 BTU Ducted Air Conditioner
21. EZ Trax Axle System



***Welded Aluminum Sidewalls
with Foam Core Insulation!***

Roof Construction

3/8" OSB
Roof Decking

Double Trusses
at Openings

Walkable 4-1/2"
Crowned Roof



Radius Roof Trusses
w/ 16" Ducting

R7 Insulation

Foam Core Insulated
Air Conditioner Ducts

Trusses are Cleated
on Both Sides



HIDEOUT

by Keystone

Construction

HIDEOUT



1. "One Piece" Rubber Roof
2. 3/8" OSB Roof Decking
3. Twin 20 Lbs. L.P. Bottles with Cover
4. Color Matched Awning
5. R-7 Insulation Throughout
6. Dual Battery Trays
7. Hurricane Strap Reinforcement
8. Oversized Pass Through Storage
9. 5/8" Seamless Floor Decking
10. Radius Window Corner Blocks
11. Easy Lift Steps
12. 6 Gallon Gas DSI Water Heater
13. Easy Lube Axles
14. Stabilizer Jacks
15. Diamond Plate Front Protector
16. Black Framed, Tinted Safety Glass Windows
17. Rain Gutter with Down Spouts
18. Exterior Speakers
19. 13,500 BTU Ducted Air Conditioner
20. Bumper Sewer Hose Storage

Strong Wood Studded Sidewalls Reinforced with Metal Hurricane Straps. Spun Fiberglass Insulation.

Frame and Flooring Construction

Darco Underbelly is Wrapped and Secured Over the Top of the Floor

"Space Saver" Heated and Enclosed Fresh Water Tank

Full Width Outriggers

5/8" x 24'

OSB Floor Decking with a Limited Lifetime Warranty

One Piece I-Beam Powder Coated Frame



www.keystone-horner.com



Model 25RKS Saddlebrook Decor

The Hideout 25 RKS shown here is an awesome rear kitchen floor plan with a side aisle bath and glass shower. This unit offers customers a small, light and affordable travel trailer. All Hideout kitchens are packed with a large two door refrigerator, microwave and oven with three burner cook-top. This floor plan has a huge panoramic living room window so you will enjoy the beauty of your surroundings.



Shown here is the amazing 25RKS bathroom. This side aisle bathroom comes complete with medicine cabinet under sink storage and of course our spacious glass shower.

Hideout Decor Packages



Saddlebrook



Green Leaf



Brookstone



The 31BHS bunk room is designed to be the kids domain! This room is versatile with an eat in dinette, sleeping for 4, and is convertible to storage for even your largest camping items. Your kids are sure to have a blast in this room design specifically for them.



The 31BHS shown here is a great family travel trailer. It has the king U-dinette and sofa that comes standard on all Hideout large slide-outs. This unit has the capacity to sleep up to 10 people. All Hideouts have beautiful wood grain cabinetry accented with the burl wood inserts giving it an upscale, rich interior design.



Model 31BHS Brookstone Decor

HIDEOUT

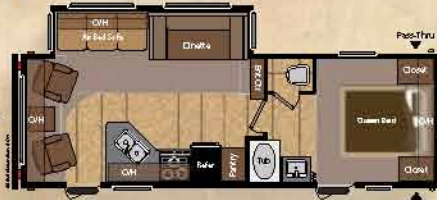
by Keystone



25RKS



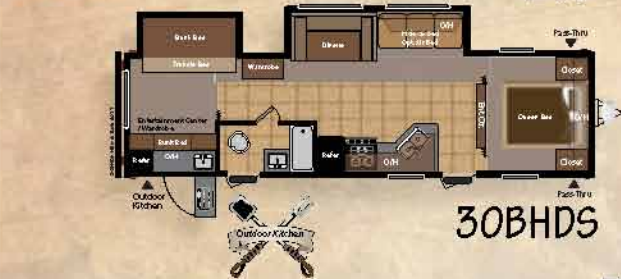
26B



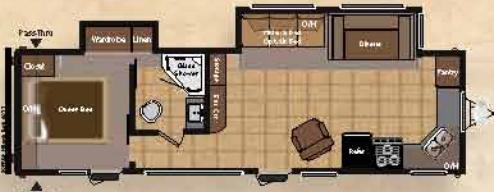
26RLS



27DBS



30BHDS



30FKDS



31BHS



38BHDS



38FQDS

19FLB



20RD



www.keystone-hideout.com

	19FLB	20RD	25RKS	26B	26RLS	27DBS	30BHDS	30FKDS	31BHS	38BHDS	38FQDS
Shipping Weight	4172	4164	5926	5183	6212	6247	7570	7239	6810	8279	8275
Carrying Capacity	2628	2636	1734	2417	1583	1593	1975	2666	2815	1756	1740
Hitch Weight	405	450	660	600	795	840	745	1105	825	1235	1215
Exterior Length	23'	22' 6"	29' 8"	29' 11"	29' 11"	31' 10"	34' 3"	33' 2"	33' 11"	39' 10"	39' 10"
Exterior Width	8'	8'	8'	8'	8'	8'	8'	8'	8'	8'	8'
Exterior Height (Top A/C)	10' 6"	10' 6"	11' 3"	11' 3"	11' 3"	11' 3"	11' 5"	11' 5"	10' 10"	11' 5"	11' 5"
Fresh Water Capacity	45	45	45	45	45	45	45	45	45	45	45
Waste Water Capacity	32	38	38	32	38	32	38	38	38	38	38
Gray Water Capacity	38	38	70	38	32	38	38	76	38	38	38
LP Capacity (Lbs.)	40	40	40	40	40	40	40	40	40	40	40
Tire Size	205/75R 14C	205/75R 14C	205/75R 14C	205/75R 14C	205/75R 14C	205/75R 14C	225/75R 15D	225/75R 15D	225/75R 15D	225/75R 15D	225/75R 15D
Awning Length	12'	12'	16'	16'	16'	16'	16'	21'	16'	21'	21'

Hideout Features

Exterior

- ✦ - **Walk on Roof**
 - Ladder Backers (N/A 19FLB, 26B)
 - Powder Coated I-Beam Frame
 - Cambered Chassis
 - Two Heavy Duty Stab Jacks
- ✦ - **Easy Lube Axles**
 - Full Length Outriggers
 - Dual Battery Rack
 - Two 20 lbs. L.P. Bottles
 - Awning-Color Coordinated
 - Heated and Enclosed Fresh Water
 - Fender Skirts
 - Exterior Speakers
 - Black Radius Window Frames
 - TV Antenna with Booster
 - Radio Antenna
 - Roof Vents
 - Cable / Satellite (RG-6) Hook Up
 - GFI Electrical Outlets
 - Seamless One Piece Roof
 - Radius Skirting
 - Oversized Pass Thru Storage (Queen Bed)
 - Hose Storage In the Bumper
 - .024 Gauge Aluminum Siding
 - R-7 Insulation throughout
 - Rain Gutters with Down Spouts
 - Four Stage Slide Room Seals
 - Roto-Cast Seamless Holding Tanks
 - 12 Volt 55 Amp Converter
 - 13,500 BTU Ducted Air Conditioner

Interior

- Sound Entertainment Center (AM/FM, CD, MP3 Jack)
- Foam Core Insulated A/C Ducts
- Wall Paper Border
- 30K BTU Furnace
- 6 Gallon DSI Quick Recovery Water Heater with By-Pass Kit
- Flex Pex Tubing w/10 Year Warranty
- ✦ - **84" Interior Height**
- ✦ - **6' Ceilings in the Slide Rooms**
 - Wall switches for the Lights
 - RG-6 Cable and Satellite
- ✦ - **Lumber core Cabinet Pre-Drilled and Screwed Stiles**
 - Decorative Window Treatments
 - Panoramic Dinette Window
 - Jack Knife Sofa-Standard
 - Mini Blinds
 - 11 3/4" Deep Slide Room Cabinets

Bath

- ✦ - **Porcelain Toilet w/Foot Flush**
 - Tub Surround
 - Shower Exhaust Fan
 - Large Medicine Cabinet

✦ **Defining its class**

● **Mandatory**

Kitchen

- 12 Volt Water Pump
- Drawers with Metal Guides
- Silverware Divider
- Holding Tank Monitor Panel
- Oven
- Range with Hi-Output Burner
- ✦ - **6 cu. ft. Refrigerator with 5 Settings**
 - Microwave
 - Reversible Dinette Cushions
 - Largest Residential Kitchen Sink
 - High Rise Kitchen Faucet
 - Waste Basket Storage
- ✦ - **Wood Core Cabinet Stiles (Pre-Drilled and Hand Screwed)**
- ✦ - **Mortise and Tenon Cabinet Door Joints**
 - Overhead Cabinets Above the Sink

Bedroom

- TV Hook Up
- King Slide Bedroom (38BHDS Only)
- Bedspread-Master Bedroom
- Bed Storage with Air shocks
- Four Cabinets Above the Queen Bed
- Master Bed-Innerspring Mattress
- Reading Light

Options

Interior

- Convert-a-Bunk (19FLB) ●
- Tub Surround ●
- Carbon Monoxide Detector ●
- Air Bed Sofa (N/A 19FLB, 20RD, 26B)
- Free Standing Dinette (30FKDS, 38BHDS and 38FQDS)
- Glass Garden Shower (25RKS, 30FKDS, 38BHDS and 38FQDS) ●
- Residential Refer (38BHDS and 38FQDS Only)

Exterior

- Exterior Shower
- Radial Tires ●
- Spare Tire Carrier
- Rear Ladder (N/A 19FLB, 26B)
- 15,000 BTU Air Conditioner
- Four Stabilizer Jacks
- Gas/Electric DSI water heater
- Twin 30# L.P. Bottles w/Cover
- Patio Door (30FKDS Only)
- Patio Door with Vertical Blind ● (38BHDS and 38FQDS Only)

Safety

- Safety Chains
- Break Away Switch
- Electric Brakes on all Wheels
- Carbon Monoxide Detector
- L.P. Detector
- Smoke Detector
- Fire Extinguisher
- GFI Electrical Outlets
- Tinted Safety Glass
- Radial Tires

Fully Functional Outdoor Kitchen

(Available on Hornet models 31RBDS and 32BHBS and Hideout model 30BHDS)



- A** Two burner gas stove which rotates inward for storage.
- B** Abundant overhead cabinet storage.
- C** 110 volt receptacle and cable TV connection
- D** Compact electric refrigerator.
- E** Silverware Drawer
- F** Sink with Hot and cold water with sprayer hose
- G** Paper Towel Holder



Keystone RV Company
 2642 Hackberry Drive
 PO Box 2000*
 Goshen, IN 46526
 574-535-2100

HORNET
 PLATINUM

www.keystone-hornet.com

HIDEOUT
 by Keystone

www.keystone-hideout.com

Product information is as accurate as possible as of the date of publication of this brochure. Features, floor Plans and specifications are subject to change without notice. Please also consult Keystone's website at keystonerv.com for more current product information. Tow Vehicle Disclaimer: Owners of Keystone Recreational Vehicles are solely responsible for the selection and proper use of tow vehicles. All customers should consult with a motor vehicle manufacturer or their dealer concerning the purchase or proper use of suitable tow vehicles for Keystone products. Keystone disclaims any liability or damages suffered as result of the selection, operation, or misuse of a tow vehicle. KEYSTONE'S LIMITED WARRANTY DOES NOT COVER DAMAGES TO THE RECREATIONAL VEHICLE OR THE TOW VEHICLE AS RESULT OF THE SELECTION, OPERATION, USE OR MISUSE OF THE TOW VEHICLE, January 2011.