

2010

Encounter

CLASS A GAS

Crossover Into
A New Way To RV



2010 ENCOUNTER

 **FLEETWOOD RV**

THE BEST OF BOTH WORLDS.

Encounter has it all. The sleeping capacity and family-friendly design of a Class C motor home; along with the roominess and storage capacity of a Class A motor home. And you thought the auto industry cornered the Crossover market. Think again.



The Bathroom includes a roomy shower with a mirrored medicine cabinet that holds your family's grooming supplies.



The Large Dinette seats four comfortably in front of the big picture window. And with the Dream Dinette system, it easily becomes an extra bed at night - the table swings down and the cushions make into a mattress.

The Hide-A-Loft (optional) adds another bed above the driver/passenger captain's chairs. Just push a button, blow up the Queen air mattress and lay out the blankets to create a comfortable sleeping space that anyone in the family can enjoy. When you're done, the bed folds up into the ceiling. Now you see it. Now you don't. (Also shown optional 26" LCD TV).



The Bunk Bed-n-Breakfast adds another dining area so your family has more space to enjoy mealtimes. After the dishes are done convert it into bunk beds so the kids can rest up for the next day's adventures.



The Galley includes everything you need to prepare a feast: a 6 cu. foot refrigerator, three-burner stove, oven, microwave, large stainless steel sink and high-rise faucet.



WHY BUY ENCOUNTER?

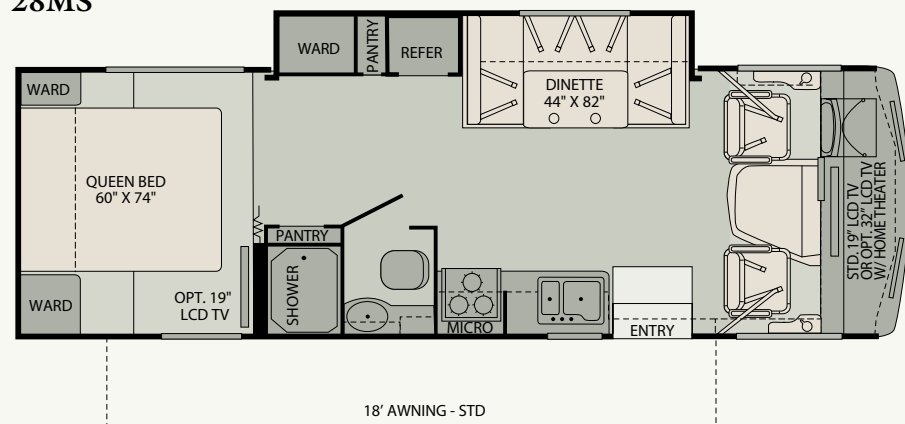
- Increased sleeping capacity
- More daytime seating
- Family-friendly design
- Flexible living areas
- Value

ENCOUNTER 32BH shown in Sage Stone interior decor with Bijoux Cherry wood cabinetry.



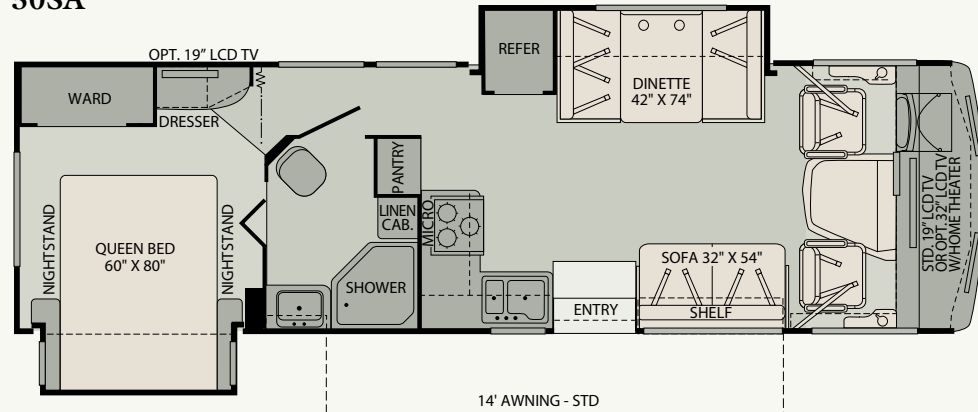
FLOOR PLANS

28MS



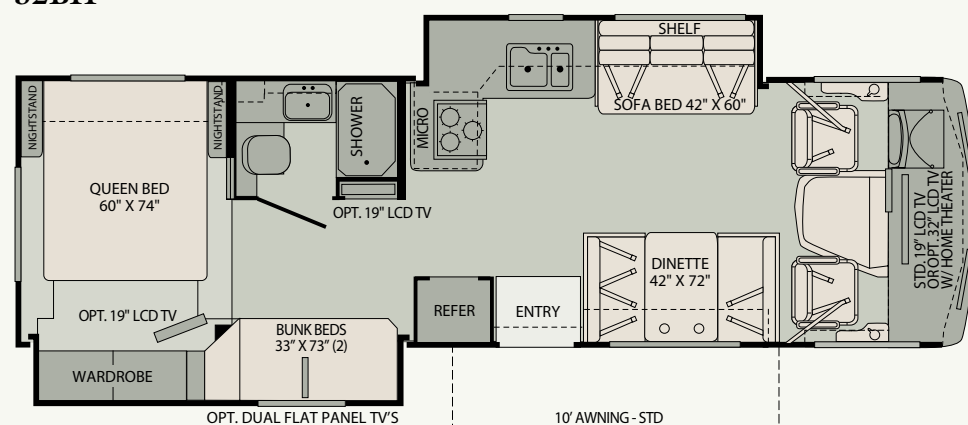
Interior Storage Capacity: 125 cu. ft.
Exterior Storage Capacity: 132 cu. ft.

30SA

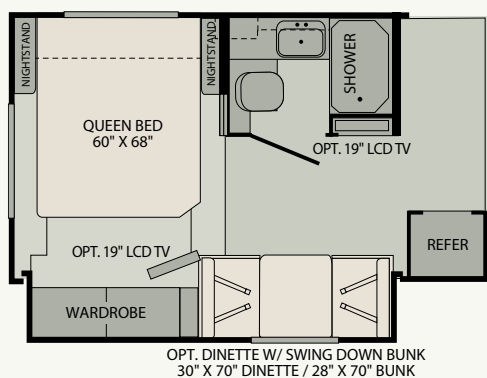


Interior Storage Capacity: 126 cu. ft.
Exterior Storage Capacity: 102 cu. ft.

32BH



Interior Storage Capacity: 119 cu. ft.
Exterior Storage Capacity: 104 cu. ft.



EXTERIOR GRAPHICS

Bitter Chocolate (standard graphics)



Bitter Chocolate (partial paint graphics)



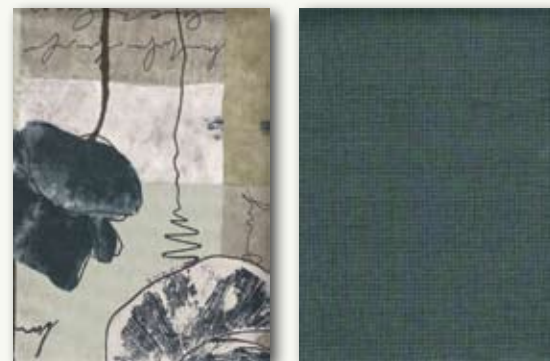
INTERIOR DÉCORS

Oasis

Living/Dining Room

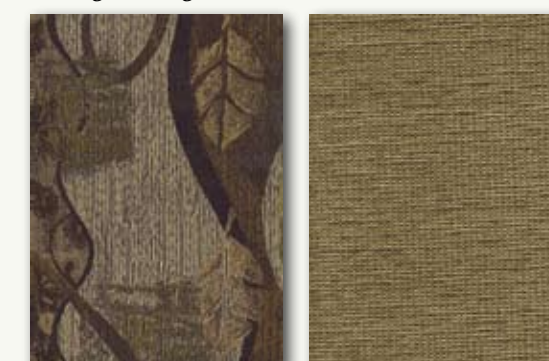


Bedroom



Sage Stone

Living/Dining Room



Bedroom



Wood Finish



Bijoux Cherry



FEATURES AND OPTIONS

WEIGHTS AND MEASUREMENTS

FORD® CHASSIS			
MODELS	28MS	30SA	32BH
Engine Displacement (Liters)	6.8	6.8	6.8
Wheelbase (Inches)	178"	190"	190"
GCWR (lbs) ¹	16,000/18,000 opt.	16,000/18,000 opt.	18,000
Front GAWR (lbs) ²	6,500/7,000	6,500/7,000	7,000
Rear GAWR (lbs) ²	11,000/12,000	11,000/12,000	12,000
GCWR (lbs) ³	21,000/23,000	23,000	21,000/23,000
Hitch Rating Weight (lbs) ¹	5,000	5,000	5,000
Tongue Weight (lbs) ¹	500	500	500
Fuel Capacity (gal)	75	75	75

Liquid Weight Reference:
Water (gal) = (8.3 lbs/3.8 kgs) Fuel (gal) = (6.1 lbs/2.8 kgs) Propane (gal) = (4.2 lbs/1.9 kgs)
Metric Conversion:
Multiply pounds x 0.453 to obtain kilograms. Multiply gallons x 3.785 to obtain liters. Multiply liters x 61 to obtain cubic inches.

DIMENSIONS & CAPACITIES			
MODELS	28MS	30SA	32BH
Overall Length ⁴	28' 8"	31'	31'
Overall Height (with A/C)	12'	12'	12'
Overall Width (maximum) ^{5,6}	102"	102"	102"
Interior Height (maximum)	82"	82"	82"
Interior Width (maximum)	96"	96"	96"
Fresh Water Holding Tank (gal)	60	60	60
Grey Water Holding Tank (gal)	35	35	35
Black Water Holding Tank (gal)	35	35	35
Appliance Propane Tank (gal) (WC) ⁷	14	14	14
Water Heater Tank (gal)	6	6	6

Model: Ford[†] **Alternator:** 130 Amp
Engine: 6.8L Triton V10 **Torque:** 457 lb-ft @ 3250 RPM
Transmission: Ford[†], 5-Spd. Automatic w/Overdrive **Horsepower:** 362HP

- GVWR (Gross Vehicle Weight Rating) is the maximum permissible weight of this fully loaded motor home. The GVWR is equal to or greater than the sum of the (UVW) unloaded vehicle weight plus the (OCCC) occupant cargo carrying capacity*.
 - GAWR (Gross Axle Weight Rating) is the maximum permissible loaded weight a specific axle is designed to carry.
 - GCWR (Gross Combined Weight Rating) is the value specified by the motor home manufacturer as the maximum allowable loaded weight of this motor home with its towed vehicle. Towing and braking capacities may be different. Refer to Fleetwood and chassis manufacturer's manuals for complete information.
 - Length measured from front bumper to rear bumper (excludes accessories).
 - Excludes safety equipment and awnings.
 - Motor homes feature a body-width over 96" which will restrict your access to certain roads. Before purchasing, you should research any state and/or province road laws which may affect your usage.
 - Tank manufacturer's listed water capacity (WC). Actual propane capacity is 80% of water listing as required by the safety code.
- † The chassis manufacturer recommends the installation of a supplemental brake control system to activate the brakes on the vehicle or trailer you are towing. Hitch receiver ratings expressed are maximum for the hitch receiver installed and may require the purchase of additional equipment that is dependent on the weight of the towed load. Consult with hitch receiver manufacturer for further information.
- * UVW and OCCC are found on the label containing the federal certification tag in each RV.

IMPORTANT — PLEASE READ: Product information, photography and illustrations included in this publication were as accurate as possible at the time of printing. For further product information and changes, please visit our website at www.fleetwoodrv.com or contact your local Fleetwood dealer. Prices, materials, design and specifications are subject to change without notice. All weights, fuel, liquid capacities and dimensions are approximate. Fleetwood has designed its recreational vehicles to provide a variety of uses for its customers. Each vehicle features optimal seating, sleeping, storage and fluid capacities. The user is responsible for selecting the proper combination of loads (i.e. occupants, equipment, fluids, cargo, etc.) to ensure that the vehicle's capacities are not exceeded.



PASS-THROUGH STORAGE lets you access your stuff from either side of the motor home. With several compartments, you don't have to trim your packing list.

STANDARD FEATURES

INTERIOR THROUGHOUT

- Complete TuffPEX Plumbing System
- 12V Water Pump, Demand Operation
- 15,000 Btu Ducted Air Conditioner w/Chill Grille
- 30,000 Btu Furnace, Wall Mounted Thermostat (30SA, 28MS)
- Dual 20,000 Btu Furnaces (32BH)
- 6 Gallon Propane Water Heater w/ Electronic Ignition
- Hardwood Raised Panel Cabinet Doors
- Hidden Cabinet Door Hinges
- Auxiliary Battery w/Disconnect Switch
- Deluxe Roller Bearing, Full Extension Drawer Guides & Transit-Ship Locks
- Water Pump with On/Off Switches at Galley & Lavvy
- Quality Constructed Furniture by Flexsteel®
- Water Heater Bypass Valve Fresh Water System Winterization
- Central Monitor Panel
- GFI Circuit Protection
- Pleated Night Shades in Living Room & Bedroom
- AC/DC Load Center w/12V Converter/Battery Charger
- Ozite Lined Shelves in Overhead Cabinets
- Ozite Lined Ceilings

DRIVER CONVENIENCE

- Soft Touch Flexsteel® Driver/Passenger Captain's Chair w/Reclining Back/Slide Controls
- 3 Point Seat Belts at Driver & Front Passenger Seats
- Auxiliary Emergency Start Assist Switch on Dash
- In-Dash AM/FM/Radio w/CD Player
- Radio Switch Main/Auxiliary Power
- Double Swivel Sun Visors w/Map Pockets
- Rear Vision Camera

- Tilt Wheel
- Cruise Control
- 12V Power Jack
- Power Heated Remote Mirrors

LIVING ROOM

- Ceiling Lights w/Wall Switches (Entry & Bath)
- Dream Dinette Table w/2 Cup Holders, Convertible for Sleeping
- Soft Touch Sofa Bed by Flair (Select Models)
- 19" LCD Wide-Screen TV w/Remote & DVD Player

GALLEY

- 3 Burner Range w/High Output/Piezo Igniter & Oven
- Dometic® 6 cu. ft. Refrigerator/Freezer
- Microwave Oven w/Electronic Touch Pad
- Range Hood w/Light & Fan
- Residential Size Double Bowl Sink
- Whole Coach Water Filtration System
- Cooktop Cover
- Laminate Countertops w/ Bull Nose T-Molding Edge
- Power Roof Fan-Tastic® Vent Fan

BEDROOM

- Bedsprad w/ Pillow Shams
- Wall Space for TV w/AC Receptacle & Cable Jack
- Reading Lights in Bed Overhead Cabinet
- Queen Bed w/Innerspring Mattress

BATHROOM

- Bath Door w/Residential Passage Lock
- China Bowl Toilet w/Hand Sprayer
- Medicine Cabinet w/Wood Construction
- Shower Head w/Flexible Hose Extension
- Skylight/Roof Vent w/12V Fan
- Molded ABS Shower/Tub with Surround

- Residential Style Faucet w/Large Sink
- Shower Curtain (28MS, 32BH)
- Shower Clothes Rod (28MS, 32BH)
- Glass Shower Door Enclosure (30SA)

EXTERIOR THROUGHOUT

- High Gloss Tuff-Coat® Smooth Fiberglass Exterior
- Large 1" (Inside Diameter) Water Tank Drain
- Sewer Hose Storage in Bumper
- Debris Awning Above All Slide-Out Rooms
- Trailer Hitch w/7 Pin Electrical Hook-Up†
- Stainless Steel Wheel Simulators
- Dual 6V Deep Cycle Auxiliary Batteries
- Onan® 4.0kW MicroQuiet Generator
- Patio Awning
- Toilet Tank San-T-Flush™ System
- Wash Unit w/Faucet, Flexible Shower Hose
- Power Electric Step

BODY STRUCTURE

- Full Basement Exterior w/Enclosed, Heated Holding Tanks & Luggage Compartments
- Molded Fiberglass Front Cap
- Vacu-bond® Hull Lamination Process
- Vacu-bond® Floor
- Royal Tuff-Ply Radius Roof with Ducted A/C
- Sidewalls Framed with 1 1/2" Aluminum Tubing
- Corrosion Resistant Aluminum Tube Hull Framing
- 26" Wide Radius Corner Entry Door w/ Obscured Window

STORAGE

- Pass Through Storage
- Roto-Molded Polyethylene Luggage Compartments
- Molded Cross Link Polyethylene Battery Compartment w/lid

SAFETY & CONVENIENCE

INTERIOR

- 10 ABC Fire Extinguisher
- Carbon Monoxide Detector/Alarm
- Exterior & Interior Entry Assist Handle
- Propane Detector/Alarm
- Smoke Detector/Alarm
- Multiple Seatbelt Locations

EXTERIOR

- 30 Amp, 30' Power Cord, Compartment Storage
- AC Duplex GFI Receptacle on Patio Side
- Amber Porch Light w/Interior Switch
- Automotive Safety Glass
- Power/Heated Rear View Mirrors
- Rear Vision Camera
- Entry Door w/Screen Door & Deadbolt Lock
- High Mounted Large Taillights
- Power Electric Step
- Radius Tinted Windows

OPTIONS

INTERIOR

- Satellite Radio
- 19" LCD TV (Bedroom)
- 32" LCD TV w/Home Entertainment Center
- Dual Flat Panel TV'S (32BH MODEL BUNKS)
- Hide-A-Loft Queen Bed
- Hide-A-Loft Queen Bed w/ 26" LCD TV
- Bunk Bed-n-Breakfast (32BH)
- Bunk Bed-n-Breakfast w/ Dual Pane Windows (32BH)

EXTERIOR

- Partial Paint
- Dual Pane Windows
- Exterior Entertainment Center with AM/FM/CD Player, Coax Cable and 120 volt Receptacle
- Hydraulic Leveling Jacks

Encounter

Class A Gas

RV OWNERCARE*

Limited one-year/15,000-mile coach warranty and three-year/45,000-mile structural warranty, whichever occurs first, and it is fully transferable for the first 12 months. RV OWNERCARE is one of the RV industry's most comprehensive programs and includes systems, appliances, components and construction, with no deductible and no service charge. RV OWNERCARE coverage is provided from a company that will be around in the future to service your needs. See your nearest Fleetwood RV dealer for a full explanation of benefits and restrictions.

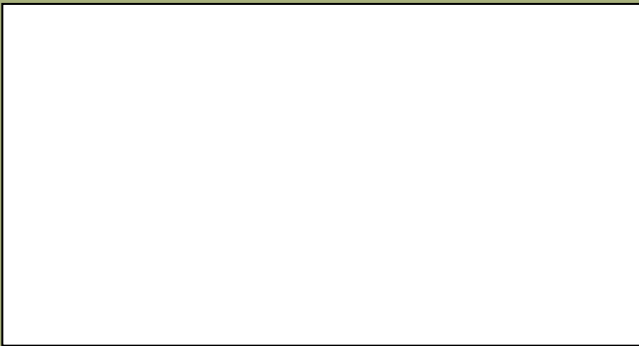
CONTACT US

To locate a dealer near you, visit our website at www.fleetwoodrv.com or call 1-800-444-4905. We can also be contacted at Fleetwood RV Customer Relations, P.O. Box 1007, Decatur, IN 46733.

FLEETWOOD MOTOR HOME CLUBS

As a Fleetwood owner, you're invited to become a member of several Fleetwood RV motor home clubs. Becoming a club member is the perfect way to meet other Fleetwood owners who love to travel across America and share in the RV lifestyle. Visit our website at www.fleetwoodrv.com/owners_clubs to learn more and join the fun.

YOUR LOCAL FLEETWOOD RV DEALER IS:



*For complete info see your Fleetwood dealer.

©2009. Fleetwood RV, Inc.
Printed in the USA. Inventory Control Number EN10B1, 11/09.
Model Year 2010, First Edition.

IMPORTANT—PLEASE READ

Product information, photography and illustrations included in this publication were as accurate as possible at the time of printing. For further product information and changes, please visit our website at www.fleetwoodrv.com or contact your local Fleetwood RV dealer. Prices, materials, design and specifications are subject to change without notice. All weights, fuel, liquid capacities and dimensions are approximate. Fleetwood RV has designed its recreational vehicles to provide a variety of uses for customers. Each vehicle features optimal seating, sleeping, storage and fluid capacities. The user is responsible for selecting the proper combination of loads (i.e. occupants, equipment, fluids, cargo, etc.) to ensure that the vehicle's capacities are not exceeded.

WHY FLEETWOOD RV?



Quality

There's no cutting corners. Skilled craftsmen build every Fleetwood RV for maximum durability and longevity.



Trust

More people trust Fleetwood RV. After all, we've spent the last 60 years perfecting RVs, earning the loyalty of generations of RVers.



Passion

We're truly passionate about the RV lifestyle. Fleetwood RV was founded by RV enthusiasts, and that tradition continues today.



Safety

You've got precious cargo. So we've engineered dozens of innovative safety features into our motor homes to give you more peace of mind.



Service

Help is nearby. When you need an upgrade or repair, you'll find Fleetwood dealers all across North America ready to assist you.



Warranty

Exclusive RV ownercare warranty. See your Fleetwood RV dealer for details.