



Coachmen®

A division of Forest River, Inc.

MIRADA

Bringing
More to
the Road



Value like no other.



High-end impact at an affordable price!

Step into the new Coachmen Mirada and step into something special: a Class A motorhome with high-end features at an affordable price!

Coachmen RV, now a Division of Forest River Inc., has been dedicated to giving RVers the best value for their RV dollar. Now we've focused even more on making it easier to afford the best in motorhome living. We guarantee that you'll be impressed with what your money can buy. So take a look and see the elegance, the amenities and ease of use that the 2010 Mirada brings to the road. We're leading the way in creating new travel experiences for your pleasure and your pocketbook, making today's technology work for today's RVers!

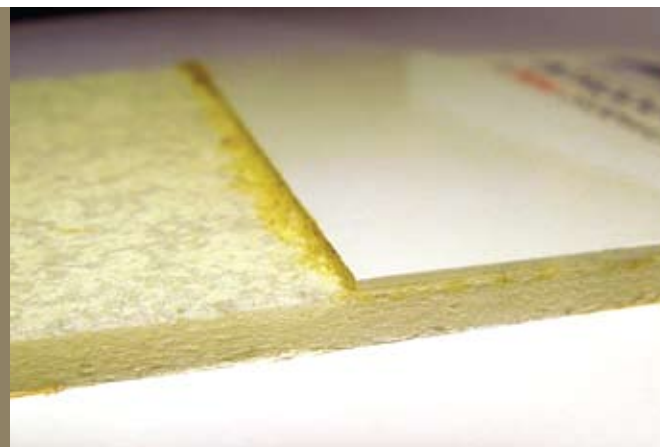
CONTENTS

Assorted Features 4 & 5
 Wood Colors & Fabric Patterns 6
 Paint Schemes 6
 Standard Features 6
 Floorplans 7
 Specifications 7
 Measurements 7
 Capacities 7
 Coachmen Owners Club 8
 Travel Easy 8



State-of-the-art laminate!

We use AZDEL SuperLite® substrate in our lamination for stronger and more moisture-proof lamination that's also lighter than other materials. It provides a tighter laminate seal that will keep your Mirada good-looking for many years to come.





The touch of
Quality & Elegance,
 made for you.

Whether it's your vacation home or something more, the 2010 Mirada surrounds you with amenities designed to enhance every aspect of your motorhome experience:

Aluminum trussed laminated roof with durable TPO membrane you can walk on.

True flush floor slides — spaciousness without hiccups or stumbles. (N/A on 29QB / 29DS)

One-piece windshield for panoramic view — safer and more scenic!

Whole house water filter system standard. (N/A for CSA units)

Standard euro chair for first-class comfort. (N/A on 29QB / 29DS)

One-touch auto leveling jacks standard for no-fuss camping. (N/A on 29QB)



Full basements with pass-through storage.



No Mess™ termination and integrated Water Works™ control panel — filling and dumping has never been so easy!

Residential-style sofa, and for your sleeping comfort, includes inflatable air mattress and has a hidden drawer for additional storage. (N/A on 28QB / 29DS)

Comfort is maximized with our Even Cool™ ducted A/C system with no cut-in insulation, combined with standard dual 13,500 BTU air conditioners with 50 amp service and 6.5 KW generator.

For viewing pleasure, all Miradas have a 32" LCD TV in the living room and 19" LCD in the bedroom standard. (N/A on 29QB)



Raised hardwood upper cabinet doors add more high-end looks.



Floorplans with bunk beds that provide an added dose of fun via optional drop-down, dual seven-inch LCD TVs with DVD and AM/FM radio. Talk about comfy movie times!

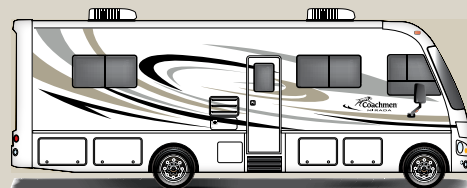
MIRADA DECOR WOOD COLORS & INTERIOR PATTERNS



Brazilian Cherry Lakeside Maple Champagne Cappuccino



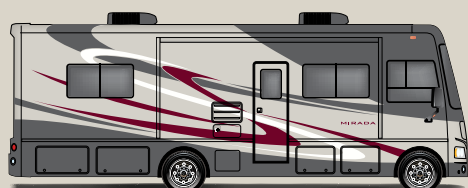
MIRADA PAINT SCHEMES



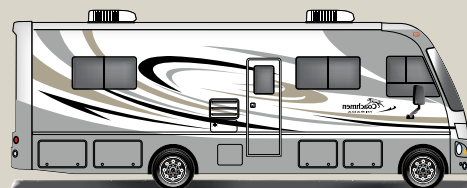
Oxford Onyx



Tan / Cocoa



Silver



Partial Paint Silver



Tan / Black

STANDARD FEATURES

INTERIOR APPOINTMENTS

- Brazilian cherry cabinets
- Monterey bisque wall board
- Laminate countertops throughout
- Congoleum linoleum
- Oil rubbed bronze hardware
- Hardwood cabinet/raised panel doors (upper)
- Techwood drawers with residential guides
- Radius slider windows with safety glass
- Reclining/swivel pilot seats
- Sofa 70" with air hide-a-bed (N/A on 29QB,29DS)
- Booth dinette
- Night shades
- Euro chair (32DS,34BH,35DS)

INTERIOR EQUIPMENT

- Radio AM/FM/CD
- Cable TV jack
- LP leak alarm and smoke detector
- Carbon monoxide detector
- Fire extinguisher
- Phone jack
- TV antenna and roto package
- 32" LCD TV coach with DVD player
- 19" LCD TV bedroom (N/A on 29QB)

BATH AND WATER

- Porcelain toilet with foot flush
- One piece ABS shower surround
- Glass shower door
- Power bath vent
- 6-Gallon (gas) DSI water heater

- Demand water pump
- Skylight over the shower
- No mess termination with light, shower, pump sw.

GALLEY

- Range hood with light
- Flush mount, double door refrigerator
- Double lever high kitchen faucets
- Double bowl kitchen sink with sink covers
- 3-Burner range
- Microwave oven (Built in Dometic 1.2)

ELECTRICAL/HEATING/AC

- 30' - 30amp power cord (29QB only)
- 30' - 50amp power cord
- 55 amp, 110/12-volt power converter
- GFI circuit
- Outside recept (DS)
- Emergency start switch
- Lighted trunk boxes
- Patio light
- 30,000 BTU E.I. furnace
- 13,500 BTU roof air conditioner-ducted
- 2nd 13,500 BTU roof AC (N/A on 29QB)
- Single coach battery
- 4.0 generator guardian (29QB only)
- 6.5 generator guardian
- Coach command center

AUTOMOTIVE/EXTERIOR

- Tilt steering wheel
- Cruise control
- Intermittent wipers

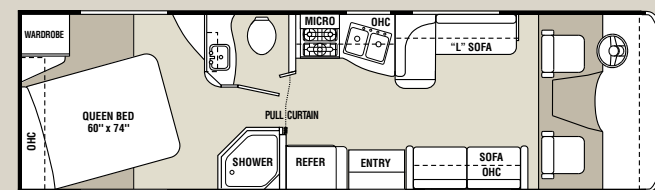
- Dash air conditioning
- Radial tires
- Rear mud flaps only
- Power entrance step-double
- Crowned, laminated TPO roof
- Radius trunk doors
- Fiberglass front cap
- Dead bolt lock-entrance door
- Radius entry door
- Patio awning
- 5,000 towing hitch with 7-way plug
- Rear mounted roof ladder
- Non-powered exterior mirrors
- Stainless steel wheel liners
- Automatic electric leveling jacks (29DS,32DS,34BH,35DS)
- Slide-out room awnings

STAND ALONE OPTIONS

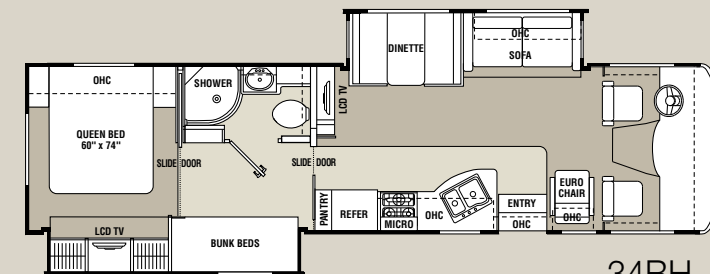
- Back up camera (sideview ready)
- Dual pane windows
- 2nd coach battery
- Automatic electric leveling jacks (29QB)
- Dual 7" TV/DVD player/AM/FM radio (34BH only)
- DVD player in bedroom
- CSA upfit
- 5.5 Onan generator
- Side view cameras
- Power main awning
- Wardrobe ipo bunks (34BH only)
- Valve stem extenders

MIRADA FLOORPLANS

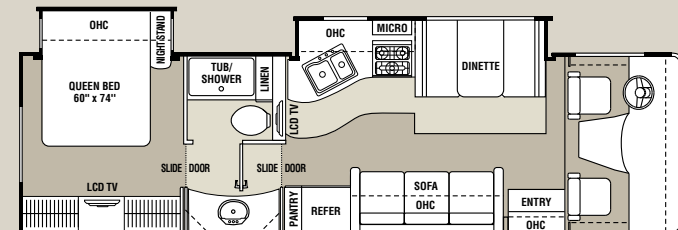
Carpet Linoleum



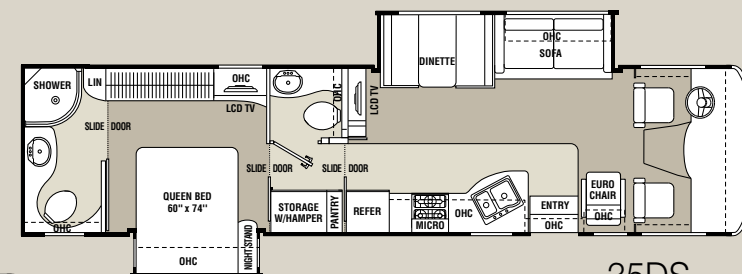
29QB



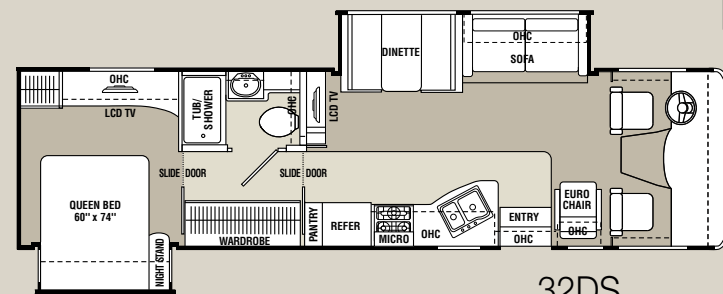
34BH



29DS



35DS



32DS

SPECIFICATIONS

	29QB	29DS	32DS	34BH	35DS
Chassis weight rating lbs.	29QB	29DS	32DS	34BH	35DS
Ford 6.8L Triton	V-10	V-10	V-10	V-10	V-10
GVWR (lbs.)	16,000	20,500	20,500	22,000	22,000
GCWR (lbs.)	26,000	26,000	26,000	26,000	26,000

MEASUREMENTS

	29QB	29DS	32DS	34BH	35DS
Wheel base	190"	228"	228"	242"	242"
Exterior (w/o ladder)	29'8"	31'11"	33'11"	34'9"	36'6"
Height (with AC)	12'	12'3"	12'3"	12'3"	12'3"
Interior height	80"	80"	80"	80"	80"
Awning size	18	18	18	14	18

CAPACITIES

	29QB	29DS	32DS	34BH	35DS
Fuel (gal.)	75	75	75	75	75
LP gas capacity (lbs.)	68	68	68	68	68
Fresh water (gal.)	49	49	49	49	49
Waste water (gal.)	45	45	45	45	90
Gray water (gal.)	45	45	45	45	45
Water heater (gal.)	6	6	6	6	6
Furnace (BTUs)	30,000	30,000	30,000	30,000	30,000
Exterior storage (cu. ft.)	115	124	128	129	130



The Mirada's luxury bath area bring the comforts of your home with you on the road.



Big benefits for new owners

Owners club discounts and more — A free one-year membership in the Coachmen Owners Association comes with the purchase of any Coachmen product. This add-on value not only provides a host of travel services and campground discounts, but also a 24/7 online service that locates needed services while offering member savings at more than 180,000 merchants across the country. And, of course, the COA is an excellent way to share experiences with other Coachmen owners through rallies and caravans.



Free roadside assistance

Coachmen provides one year of free Travel Easy™ emergency roadside assistance for those who buy a new Coachmen RV. Administered by Coach-Net®, this service gives Coachmen owners 24/7 access to operational, technical and emergency road services, including towing, fuel delivery, jump starts, lockout service, tire changes, mobile mechanic and unlimited technical advice. So no matter where you go, we're ready to help!

GVWR (Gross Vehicle Weight Rating): The maximum permissible weight of the unit, including the unloaded vehicle weight (UVW) plus all fluids, cargo, optional equipment and accessories. For safety and product performance, do not exceed the GVWR.

CW (Curb Weight): The weight of the unit without factory or dealer installed options, plus allowance for the weight of full fuel capacity. The "payload capacity" for all other fluids, cargo, occupants, optional equipment, and accessories can be determined by subtracting the CW from the GVWR.

GCWR (Gross Combined Weight Rating): The maximum total weight of the loaded unit, plus a tow vehicle. This includes the weight of both the unit and tow vehicle, fuel for each, all other fluids, cargo, occupants, optional equipment and accessories.

Wider Widths: Numerous Coachmen floorplans feature the "wide body" design concept, which gives you significantly enhanced interior living space and innovative floorplans.

In making your purchase decision, you should be aware that a few states restrict access on some or all roads within the state to vehicle with a maximum 96-inch width, although special road usage permits may be available. Vehicles up to 102-inches in some width are permitted in the vast majority of states. You should confirm the road usage laws in the states of interest to you before making your purchase decision. If width is

of concern to you, we invite you to consider the broad array of other Coachmen models offers in the standard 96-inches width.

Important Note: All capacities are approximate, and all dimensions are nominal. Coachmen motorhomes are designed to allow for a wide variety of uses, extended trips with two people or short trips with multiple people. Accordingly, each unit allows ample room for sleeping, seating, fluids and cargo. While the customer is the beneficiary of this design, the customer also bears the responsibility to select the proper combination of passengers, cargo, load, and tow vehicle without exceeding the chassis weight capabilities. Consumer may need additional braking capacity to tow loads greater than 1,000 pounds.

Seat belts should always be worn for passenger safety. Seat belts are provided at most locations to allow convenience in selecting which seat to occupy. However, it is not intended that all seating positions equipped with a seat belt may be occupied while the vehicle is in motion, without regard to other weight factors.

All Coachmen motorhomes are designed to ensure that the number of passengers allowed while the vehicle is in motion will always at least equal the stated sleeping capacity. Though extra seat belts may be provided, for your safety and the proper operation of your vehicle, limit your passengers to the number allowed by the Net Carrying Capacity of your vehicle.



Coachmen
A division of Forest River, Inc.

Coachmen Recreational Vehicle Company, LLC
P.O. Box 30, Middlebury, IN 46540

To see how Coachmen is making the easy life even easier, visit www.easyRVing.com or call 1.800.353.7383.

All information contained in this brochure is believed to be accurate at the time of publication. However, during the model year, it may be necessary to make revisions, and Coachmen reserves the right to make all such changes without notice, including changes in prices, colors, materials, equipment and specifications, as well as the addition of new models and the discontinuance of models shown in this brochure. Therefore, please consult with your Coachmen dealer and confirm the existence of any materials, design or specifications that are material to your purchase decision.