

# Jamboree

Class C

*Pebble Beach (Standard Graphics)\**



**FLEETWOOD**  
Driven to Explore

*Iron (Full-Body Paint Option)\**



*Platinum (Full-Body Paint Option)\**



*Shalestone (Full-Body Paint Option)\**



\* Additional standard graphics and full-body paint color schemes are also available. See your Fleetwood dealer or visit our website at [www.fleetwoodrv.com](http://www.fleetwoodrv.com) to view all graphic and color choices.

## INTERIOR DECORS

### Cabernet

#### LIVING/DINING ROOM



Dinette Cushions



Sofa



Ultraleather™ Driver & Front Passenger Seats (Optional)

#### BEDROOM



Bedspread & Headboard



Bedspread & Throw Pillow

### Lake

#### LIVING/DINING ROOM



Dinette Cushions



Sofa



Ultraleather™ Driver & Front Passenger Seats (Optional)

#### BEDROOM



Bedspread & Headboard



Bedspread & Throw Pillow

### Pebble Beach

#### LIVING/DINING ROOM



Dinette Cushions



Sofa



Ultraleather™ Driver & Front Passenger Seats (Optional)

#### BEDROOM



Bedspread & Headboard



Bedspread & Throw Pillow

### Wood Finishes

Bijou Cherry

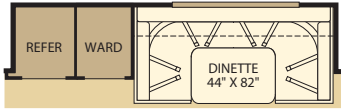


Plantation Cherry

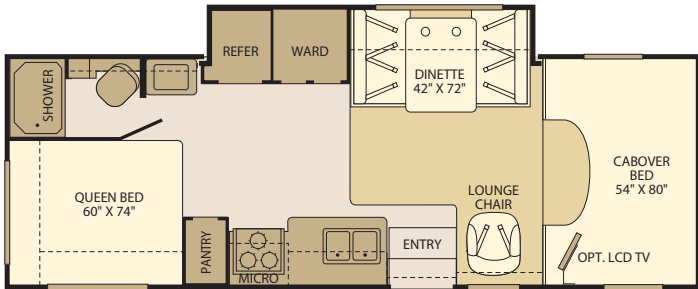


# FLOOR PLANS

**26J**  
Single Slide-Out

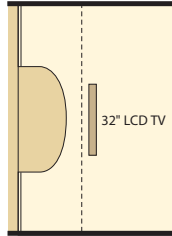


OPT. WRAPAROUND BOOTH DINETTE



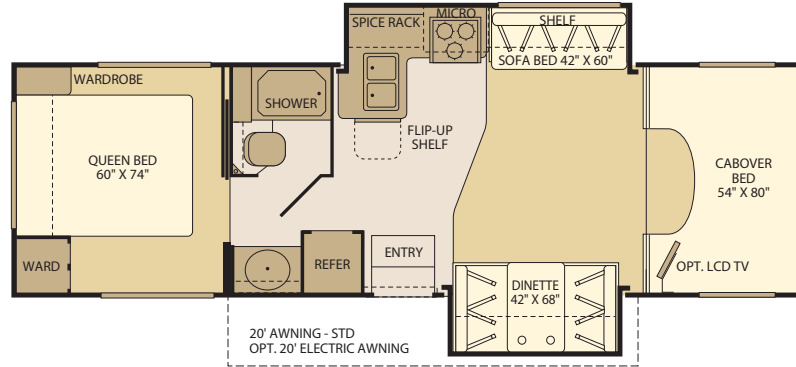
18' AWNING - STD  
OPT. 18' ELECTRIC AWNING

Interior Storage Capacity: 123 cu. ft.  
Exterior Storage Capacity: 62 cu. ft.



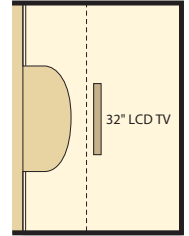
OPT. CABOVER ENTERTAINMENT CENTER

**30H**  
Double Slide-Out



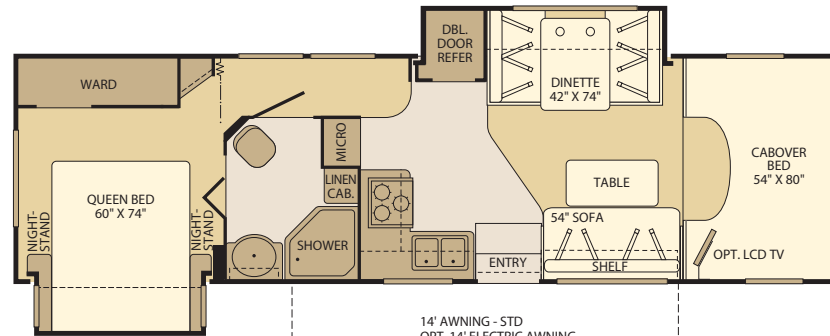
20' AWNING - STD  
OPT. 20' ELECTRIC AWNING

Interior Storage Capacity: 75 cu. ft.  
Exterior Storage Capacity: 117 cu. ft.



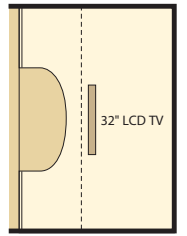
OPT. CABOVER ENTERTAINMENT CENTER

**31M**  
Double Slide-Out



14' AWNING - STD  
OPT. 14' ELECTRIC AWNING

Interior Storage Capacity: 147 cu. ft.  
Exterior Storage Capacity: 86 cu. ft.



OPT. CABOVER ENTERTAINMENT CENTER

## STANDARD FEATURES

### INTERIOR

#### INTERIOR - THROUGHOUT

- Complete TuffPEX Plumbing System
- 12V Water Pump, Demand Operation
- 15,000 BTU Ducted Air Conditioner with Chill Grille
- 30,000 BTU Furnace, Wall Mounted Thermostat
- 6 Gallon Propane Water Heater with Electronic Ignition
- Arched Hardwood Overhead Cabinet Doors with Raised Panel and Hidden Hinges
- Auxiliary Battery with Disconnect Switch
- Carpet w/Pad & Vinyl Flooring in Galley, Lavy and Entry
- Deluxe Roller Bearing, Full Extension Drawer Guides and Transit-Ship Locks
- Water Pump Controller with On/Off Switches at Galley, Lavy and Service Compartment
- Quality Constructed Furniture by Flexsteel®
- Water Heater Bypass Valve Fresh Water System Winterization
- Central Monitor Panel
- GFI Circuit Protection
- AC/DC Load Center with 12V Converter/Battery Charger

#### DRIVER CONVENIENCE

- 3 Point Seat Belts at Driver and Front Passenger Seats
- In-Dash AM/FM/Radio with CD Player and 4 Speakers
- Power Windows and Door Locks
- 54" x 80" Cabover Bed with Privacy Curtain, Roof Vent and Sliding Side Windows
- Cabover Bunk Ladder
- Driver/Front Passenger Air Bag Supplemental Restraint System
- Cockpit Area with Tilt Wheel, Cruise Control, Dome Light, Beverage Cup Holders, Map Pocket
- Auxiliary Emergency Start Assist Switch on Dash

#### LIVING ROOM

- Ceiling Lights with Wall Switches (Entry and Bath)
- Day/Night Pleated Shades
- Dinette with 2 Cup Holders, Convertible for Sleeping
- Sofa Bed with Armrests (Select Models)
- Swivel Base Lounge Chair with Dual Lock Position (26J)

### GALLEY

- Laminate Countertops with Corian® Edge
- 3 Burner Range w/High Output/Piezo Ignitor and Oven
- Decor Wall Border
- Dometic® 6 cu.ft. Refrigerator/Freezer
- Real Wood Drawers
- Flip-Up Countertop Extension (Select Models)
- Kitchen Convenience Package: Spice Rack, Paper Towel Holder, Sink Cover/Cutting Board and Silverware Drawer
- Microwave Oven with Electronic Touch Pad
- Convection Microwave Oven (Select Models)
- Raised Panel Refrigerator Inserts
- Rangehood with Light and Fan
- Residential Size Double Bowl Sink with Single Lever Faucet
- Whole Coach Water Filtration System
- Cook Top Cover

### BEDROOM

- Bedspring with Reverse Pillow Shams
- Night Pleated Shades
- Halogen Reading Lights
- Queen Bed w/Innerspring Mattress

### BATHROOM

- Laminate Countertops with Corian® Edge
- Bath Door with Residential Passage Lock and Towel Bars
- China Bowl Toilet with Hand Sprayer
- Medicine Cabinet with Wood Construction
- Shower Head with Flexible Hose Extension
- Skylight/Roof Vent with 12V Fan
- Wall Mounted Mirror (Select Models)
- Molded ABS Shower/Tub with Surround
- Residential Style Metal Faucet with Large Sink
- Glass Shower Door Enclosure (Select Models)
- Folding Shower Door Enclosure (Select Models)
- Shower Curtain (26J)

### SAFETY/CONVENIENCE

- 10 ABC Fire Extinguisher
- Carbon Monoxide Detector/Alarm
- Exterior & Interior Entry Assist Handle
- Propane Detector/Alarm
- Smoke Detector/Alarm
- Multiple Seatbelt Locations

### EXTERIOR

#### EXTERIOR - THROUGHOUT

- High Gloss Tuff-Coat® Smooth Fiberglass Exterior
- Outstanding Exterior Graphics and Styling
- Onan® 4.0kW Microquiet Generator
- Large 1" (Inside Diameter) Water Tank Drain
- Rear Ladder
- Aluminum Basement Truss System
- Utility Compartment with Exterior Shower and Holding Tank Dump Valves
- EZ Glide® Slide-Out Room and Compartment (Select Models)
- Debris Awning Above All Slide-Out Rooms
- Trailer Hitch with 7 Pin Electrical Hook-Up†
- Dual 6V Deep Cycle Auxiliary Batteries
- Rear Fuel Fill
- Stainless Steel Wheel Liners
- Full Size Spare Tire with Carrier (26J)
- Full Size Spare Tire (Select Models)
- Patio Awning
- Toilet Tank San-T-Flush™ System

#### BODY STRUCTURE

- Vacu-bond® Hull Lamination Process
- Vacu-bond® Floor
- Royal Tuff-Ply Radius Roof with Ducted A/C
- Sidewalls Framed with 1-1/2" Aluminum Tubing
- Corrosion Resistant Aluminum Tube Hull Framing
- Molded Rear Wheel Trim Flares
- Molded Rear Wall/Ceiling Transition Trim
- Steel Powder Coated Rear Bumper
- Heated Holding Tanks in Basement Compartments
- One-Piece Molded Fiberglass Front End Cap
- 26" Wide Radius Corner Entry Door w/Window
- Full Basement Exterior

#### SAFETY/CONVENIENCE

- 30 Amp, 30' Power Cord, Compartment Storage
- AC Duplex GFI Receptacle on Patio Side
- Breakaway Side Mirrors with Power Adjust and Heat Control
- Amber Porch Light with Interior Switch
- Automotive Safety Glass
- Entry Door with Screen Door and Deadbolt Lock
- High Mounted Large Taillights
- Hydraulic 4 Wheel Disk Brakes with 4 Wheel

- Anti-Lock Brakes
- Power Electric Step
- Radius Tinted Windows

#### STORAGE

- Molded Cross Link Polyethylene Battery Compartment Container and Lid
- Insulated Locking Luggage Doors with Thumb Latch

## OPTIONS

#### INTERIOR

- 15,000 BTU A/C with Heat Pump
- Linoleum Throughout
- Custom Dash Appliqués
- Cabover Entertainment System: 32" LCD TV w/Home Theater
- 19" LCD Wide-screen TV with Remote and DVD Player
- Satellite Radio
- Power Roof Fan-Tastic® Vent Fan
- Glass Shower Door Enclosure (Select Models)
- 15" LCD TV (Bedroom)

#### EXTERIOR

- Exterior Entertainment Center with AM/FM/CD Player and Auxiliary Speaker, Coax Cable and 12V/110 Receptacles (Except 26J)
- Electric Patio Awning
- Dual Pane Windows
- Rear Vision Camera
- Auto Locating Satellite Dish
- Full Body Paint

## FLEETWOOD ADVANTAGES

- One-Piece Molded Fiberglass Front End Cap
- Full Body Paint Options for that Custom, High-End Luxury Look
- 3 Interior Decors and 2 Wood Choices Provide 6 Different Interior Looks Tailored to You
- 3 Floor Plans from 26' to 31' with Single or Double Slide-Outs to Suit Your RV Lifestyle
- Vacu-bond® Walls with Smooth High Gloss Exterior Tuff-Coat® Fiberglass
- Extended Season Camping with Enclosed/Heated Water and Holding Tanks

## WEIGHTS & MEASUREMENTS



### WEIGHTS

Models	26J	30H	31M
Chassis	Ford® E450	Ford® E450	Ford® E450
Engine Displacement (Liters)	6.8	6.8	6.8
Wheelbase (Inches)	188"	206"	218"
GVWR (lbs) <sup>1</sup>	14,500	14,500	14,500
Front GAWR (lbs) <sup>2</sup>	5,000	5,000	5,000
Rear GAWR (lbs) <sup>2</sup>	9,500	9,500	9,500
GCWR (lbs) <sup>3</sup>	19,500	19,500	19,500
Hitch Rating Weight (lbs) <sup>†</sup>	5,000	5,000	5,000
Tongue Weight (lbs) <sup>†</sup>	350	350	350
Fuel Capacity (gal)	55	55	55

### DIMENSIONS & CAPACITIES

Models	26J	30H	31M
Overall Length <sup>4</sup>	27' 4-1/2"	30' 9-1/2"	32' 5-1/2"
Overall Height (with A/C)	11' 7"	11' 7"	11' 7"
Overall Width (maximum) <sup>5, 6</sup>	102"	102"	102"
Interior Height (maximum)	82"	82"	82"
Interior Width (maximum)	96"	96"	96"
Fresh Water Holding Tank (gal)	50	50	35
Grey Water Holding Tank (gal)	37	35	37
Black Water Holding Tank (gal)	37	35	37
Water Heater Tank (gal)	6	6	6
Appliance Propane Tank (gal) (WC) <sup>7</sup>	14	14	14

**Liquid Weight Reference:** Water (gal) = (8.3 lbs/3.8kgs), Fuel (gal) = (6.1 lbs/2.8 kgs), Propane (gal) = (4.2 lbs/1.9 kgs)

**Metric Conversion:** Multiply pounds x 0.453 to obtain kilograms. Multiply gallons x 3.785 to obtain liters. Multiply liters x 61 to obtain cubic inches.

### CHASSIS

Model: Ford® E450      Torque: 420 lb-ft @ 3250 RPM      Horsepower: 305HP  
 Engine: 6.8L Triton V10      Alternator: 115 Amp      Transmission: 5-Speed Automatic w/Overdrive

- GVWR (Gross Vehicle Weight Rating) is the maximum permissible weight of this fully loaded motor home. The GVWR is equal to or greater than the sum of the (UVW) unloaded vehicle weight plus the (CCC) cargo carrying capacity\*.
- GAWR (Gross Axle Weight Rating) is the maximum permissible loaded weight a specific axle is designed to carry.
- GCWR (Gross Combined Weight Rating) is the value specified by the motor home manufacturer as the maximum allowable loaded weight of this motor home with its towed vehicle. Towing and braking capacities may be different. Refer to Fleetwood and chassis manufacturer's manuals for complete information.
- Length measured from front bumper to rear bumper (excludes accessories).
- Excludes safety equipment and awnings.
- Motor homes feature a body-width over 96" which will restrict your access to certain roads. Before purchasing, you should research any state and/or province road laws which may affect your usage.
- Tank manufacturer's listed water capacity (WC). Actual propane capacity is 80% of water listing as required by the safety code.

† The chassis manufacturer recommends the installation of a supplemental brake control system to activate the brakes on the vehicle or trailer you are towing. Hitch receiver ratings expressed are maximum for the hitch receiver installed and may require the purchase of additional equipment that is dependent on the weight of the towed load. Consult with hitch receiver manufacturer for further information.

N/A = not available at time of printing.

\* UVW and CCC are found on the cargo carrying capacity label in each RV.

**IMPORTANT — PLEASE READ:** Product information, photography and illustrations included in this publication were as accurate as possible at the time of printing. For further product information and changes, please visit our website at [www.fleetwoodrv.com](http://www.fleetwoodrv.com) or contact your local Fleetwood dealer. Prices, materials, design and specifications are subject to change without notice. All weights, fuel, liquid capacities and dimensions are approximate. Fleetwood has designed its recreational vehicles to provide a variety of uses for its customers. Each vehicle features optimal seating, sleeping, storage and fluid capacities. The user is responsible for selecting the proper combination of loads (i.e. occupants, equipment, fluids, cargo, etc.) to ensure that the vehicle's capacities are not exceeded.