

GRAND JUNCTION & GRAND JUNCTION GCR  
·FIFTH WHEELS·

# GRAND JUNCTION

·FIFTH WHEELS·



DISTINCTIVE STYLE · FIRST CLASS ELEGANCE · UNSURPASSED VALUE



# GRAND JUNCTION & GRAND JUNCTION GCR

·FIFTH WHEELS·



Grand Junction 37QSB with Dexter Java décor and Oak cabinetry

## GRAND JUNCTION

The ultimate in style, sophistication,  
features & value.

Pages 6-7

Experienced RV owners deserve unique features and luxurious amenities. Grand Junction is focused on providing products with highly desirable features that cannot be found in a competitor's product.

Grand Junction - Designed by and for experienced RV owners.



Grand Junction GCR 37TRL with Cappuccino décor

Grand Junction and Grand Junction GCR offer more value for your dollar.

### KEY STANDARD FEATURES

- 6 Way welded aluminum cage frame - walls, floor & roof!
- 5 Way lamination - walls (R9) and floor (R17)
- Enclosed, insulated & heated underbelly - including knife valves
- R21 roof insulation package with Poly-flex 2000 reflective barrier
- 100% Hardwood, stained, slot & screw cabinet construction - doors, drawers & cabinet stiles
- 40,000 BTU LP furnace
- 12 Gallon water
- Corian® brand solid surface countertops
- Power electric awning
- MOR/Ryde LRE 4000 suspension system
- Jensen HD LCD TV in living room & bedroom
- 1.3 Cu. Ft. over the range microwave with integrated fan
- Gel Coat fiberglass walls

Compare us to the competition - Grand Junction is your best value.

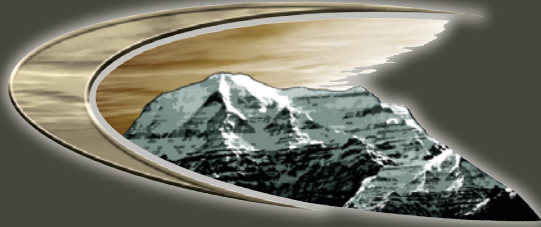
## INTRODUCING GRAND JUNCTION GCR

Taking Grand Junction to a new level of elegance.

Pages 6-7



# GRAND JUNCTION



Step into Grand Junction and experience the ultimate in sophistication and luxury, featuring hardwood cabinet doors and frames, Corian® solid surface countertops and residential furnishings. Grand Junction is the new standard in style, features and function.



Grand Junction 35TMS with Boca Beige décor and Cherry cabinetry

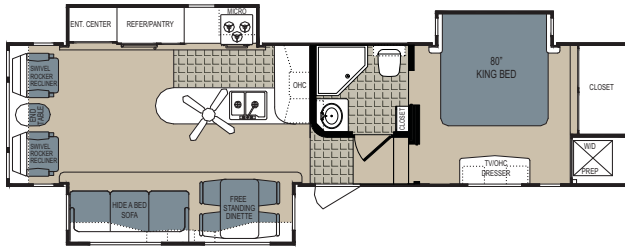


Grand Junction 37QSB with Dexter Java décor and Oak cabinetry

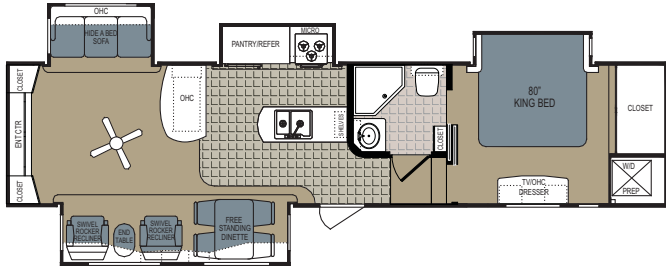


RESIDENTIAL FEATURES WITH PREMIUM COMPONENTS

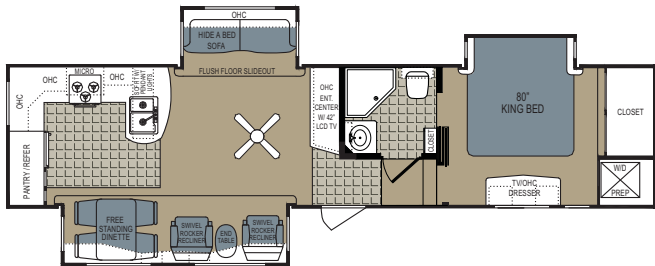
# GRAND JUNCTION ·FLOORPLANS·



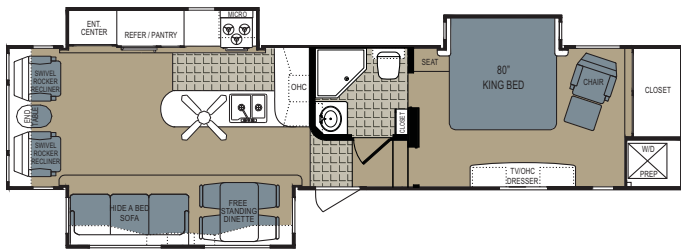
335TRL



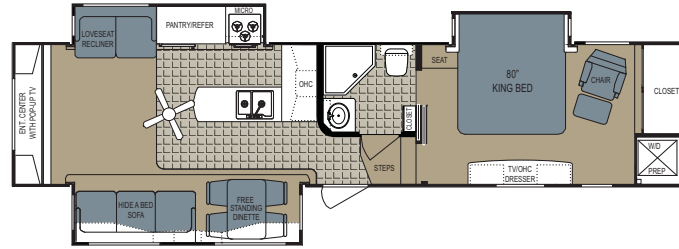
34QRE



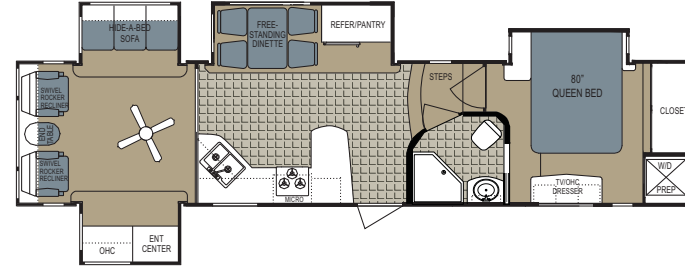
34TRG



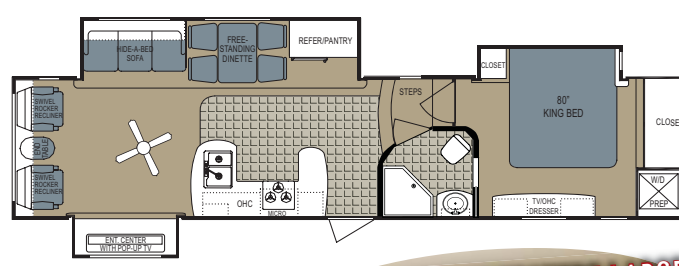
35TMS



35TRE



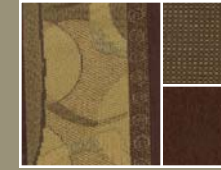
37QSB



37TRL

**ALL FLOORPLANS FEATURE LARGE PRIVATE BATHS WITH DUAL ENTRY!**

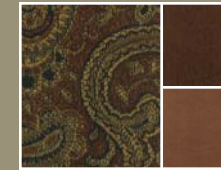
## GRAND JUNCTION ·DÉCOR & CABINETRY CHOICES·



Dexter Java



Boca Beige



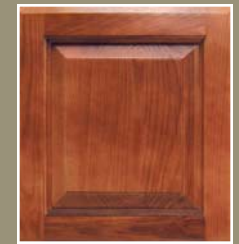
Desmond Saddle



Peppermill



Oak



Cherry

## GRAND JUNCTION WEIGHTS & SPECIFICATIONS

	Unloaded Vehicle Weight	Dry Hitch Weight	Net Cargo Capacity	Exterior Length	Exterior Width	Exterior Height	Fresh Water Capacity	Grey Water Capacity	Black Water Capacity	Furnace Size	Awning Length
335TRL	11,535	2,341	2,989	36' 7"	8'	12' 6"	69 Gal.	96 Gal.	48 Gal.	40,000 BTU	15'
34QRE	12,570	2,444	1,954	38' 10"	8'	12' 6"	69 Gal.	114 Gal.	48 Gal.	40,000 BTU	19'
34TRG	11,884	2,764	2,640	38' 4"	8'	12' 6"	69 Gal.	144 Gal.	48 Gal.	40,000 BTU	17'
35TMS	12,130	2,178	2,394	39' 6"	8'	12' 6"	69 Gal.	114 Gal.	42 Gal.	40,000 BTU	18'
35TRE	12,228	2,114	2,296	39' 6"	8'	12' 6"	69 Gal.	114 Gal.	42 Gal.	40,000 BTU	18'
37QSB	12,507	2,268	2,017	39' 11"	8'	12' 6"	69 Gal.	96 Gal.	42 Gal.	40,000 BTU	18'
37TRL	12,189	2,355	2,768	39' 11"	8'	12' 6"	69 Gal.	90 Gal.	42 Gal.	40,000 BTU	21'
<b>TIRE SIZE (All Models): ST235/85R16</b>											

Vehicle loading - Every effort has been made to provide the greatest number of options for the recreational vehicle owner. Along with these choices comes the responsibility to manage the loads that are imposed by the choices that they remain within the manufacturer's specified chassis weight limits. Do not overload the recreational vehicle. Some optional equipment not included.

Net carrying capacity (NCC) is determined by subtracting unloaded vehicle weight (UVW) from gross vehicle weight (GVWR) and includes fluids, options and cargo. Liquid capacities and weights are approximations only. Warning - This information is intended as a guide only. Weights of individual vehicles may vary. Consult your owner's manual for complete loading, weighing and towing instructions. \*UVW and Hitch Dry Weight are base weights of units without options. Each unit includes a weight label which lists specific weight information for that unit.



# GRAND JUNCTION & GRAND JUNCTION GCR

## ·COMPETITIVE ADVANTAGES·

### ·MOR/RYDE SUSPENSION SYSTEM·

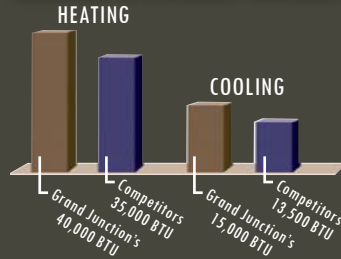


Grand Junction provides the MOR/ryde 4000 Equalizer Suspension System standard.

The MOR/ryde suspension system uses rubber shear springs that work in concert with steel leaf springs. The MOR/ryde system

provides almost double the axle travel of traditional systems. Increased axle travel translates into a smoother ride for your RV.

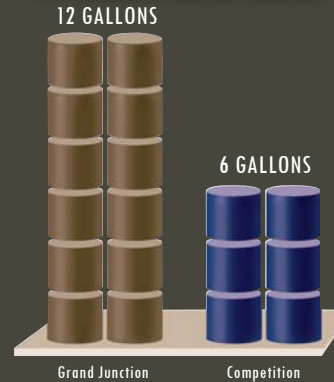
### ·HEATING & COOLING SYSTEMS·



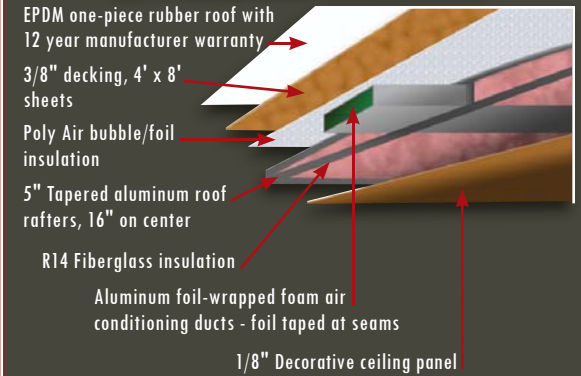
Grand Junction will keep you warm on chilly evenings with a 40,000 BTU forced air furnace.

It also features a standard 15,000 BTU air conditioner with quick cool feature.

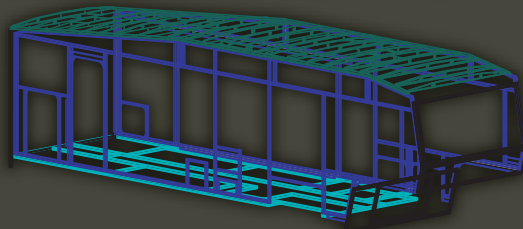
### ·12 GALLON WATER HEATER·



### ·R21 5-LAYER ROOF CONSTRUCTION·



### ·6-WAY WELDED ALUMINUM CAGE CONSTRUCTION·



### ·BALL BEARING DRAWER GLIDES·



Stainless steel ball bearing drawer hardware is designed to open easily under a full load and includes a drawer stop feature to prevent drawers from opening during travel.

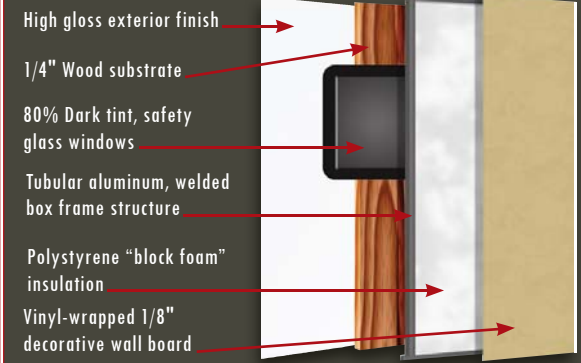
### ·CORIAN® COUNTERTOPS·

Nothing says class and elegance in a kitchen like Corian® countertops. Each countertop is handmade to fit your vehicle to assure many years of durable use and classic beauty.



Grand Junction is also available with optional granite countertops for added elegance.

### ·VACUUM-BONDED LAMINATED WALL CONSTRUCTION·



### ·INSULATION "R" VALUES·

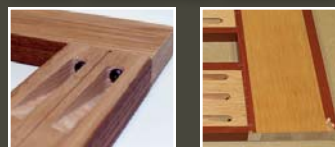
Roof	R21	Floor	R17
Sidewalls	R9	Front/Rear Wall	R9

### ·STACKED RAIL CHASSIS DESIGN·



Grand Junction uses a stacked rail chassis design. This chassis design uses double I-beam frame rails to increase the amount of storage space under the bath/bedroom deck. Many models feature an amazing 125 cubic feet of storage!

### ·SOLID HARDWOOD CABINETRY·



Grand Junction's Hardwood Stiles, Slot & Screw Construction

Competitors Lumbercore Stiles, Staple Construction

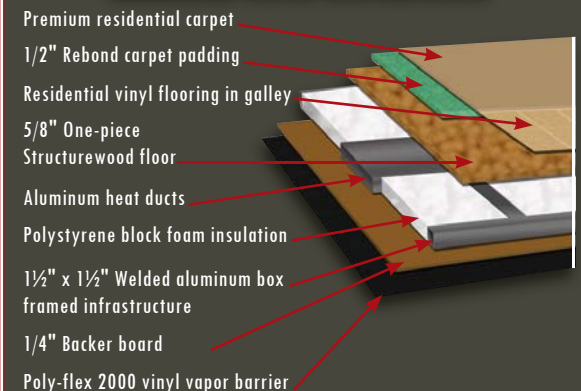
Grand Junction features solid ash cabinet stiles/frame, hardwood cabinet doors, drawers and slide room fascias. The wood is stained to match the solid hardwood cabinet stiles.

### ·HEATED/ENCLOSED UNDERBELLY·



Heated, insulated & enclosed tanks, valves & underbelly are all standard on Grand Junction.

### ·LAMINATED FLOOR CONSTRUCTION·





# ·INTRODUCING GRAND JUNCTION GCR·

Grand Junction GCR has taken luxury and value to the next level. Incorporating premium features, elegant interior design and premium amenities, Grand Junction GCR is sure to become the industry standard in luxury fifth wheels.

## GCR GRAND JUNCTION



Grand Junction GCR includes the same great features that make Grand Junction a best-selling high profile fifth wheel in addition to these GCR features:

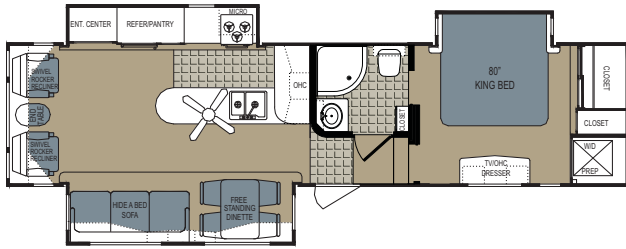
- Two-tone wood cabinets with glazed finish - Tuscan Walnut
- Upgraded Corian® Signature Series countertops throughout with Corian® Signature Series sink covers
- 1.3 Cubic foot over-the-range Half Time® convection oven/microwave
- Sealed burner range top with glass front
- Ultra Leather swivel rocker recliners
- Rounded one-piece fiberglass shower surround with seat and glass shower doors
- Fantastic fans in galley and bedroom
- Central vacuum
- Premium Gel-Coat fiberglass exterior walls
- MOR/Ryde shear spring king pin hitch system
- Awning toppers over the standard power electric awning
- Recessed halogen puck lighting



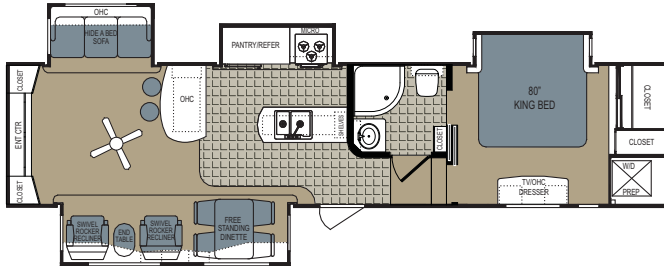
Grand Junction GCR 37TRL with Cappuccino décor featuring an entertainment center with Pop-Up TV & six 5" x 7" picture frames



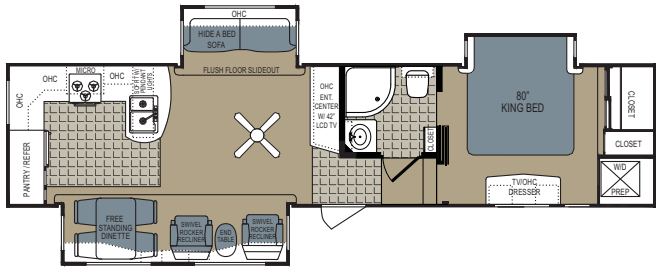
# GRAND JUNCTION GCR FLOORPLANS



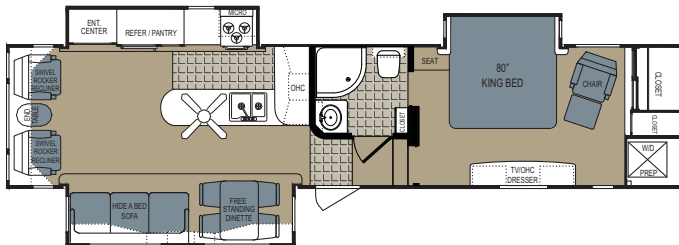
335TRL



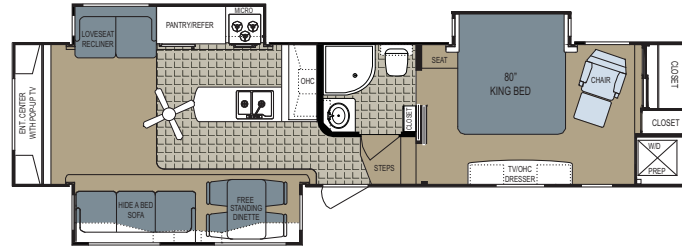
34QRE



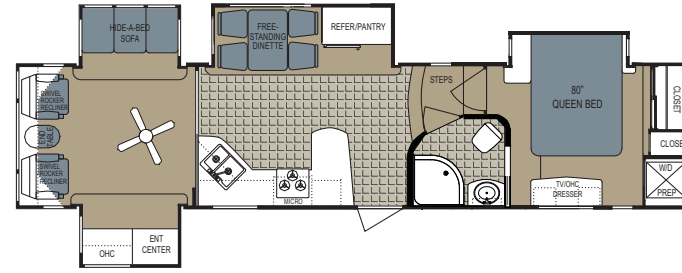
34TRG



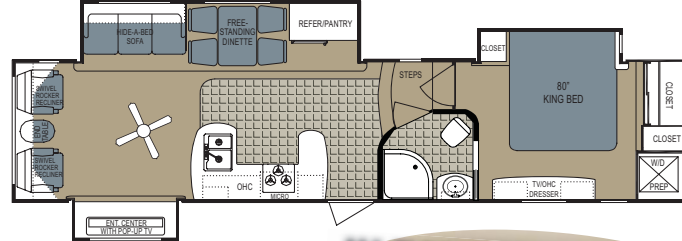
35TMS



35TRE



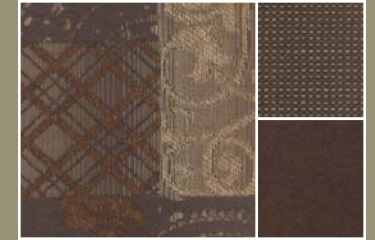
37QSB



37TRL

**ALL FLOORPLANS FEATURE LARGE PRIVATE BATHS WITH DUAL ENTRY!**

## GRAND JUNCTION GCR DÉCOR CHOICES & CABINERY



Hathaway Raisin



Cappuccino



Upper Cabinets

Lower Cabinets

Tuscan Walnut (Standard)

## GRAND JUNCTION GCR WEIGHTS & SPECIFICATIONS

	Unloaded Vehicle Weight	Dry Hitch Weight	Net Cargo Capacity	Exterior Length	Exterior Width	Exterior Height	Fresh Water Capacity	Grey Water Capacity	Black Water Capacity	Furnace Size	Awning Length
335TRL	11,535	2,341	2,989	36' 7"	8'	12' 6"	69 Gal.	96 Gal.	48 Gal.	40,000 BTU	15'
34QRE	12,570	2,444	1,954	38' 10"	8'	12' 6"	69 Gal.	114 Gal.	48 Gal.	40,000 BTU	19'
34TRG	11,884	2,764	2,640	38' 4"	8'	12' 6"	69 Gal.	144 Gal.	48 Gal.	40,000 BTU	17'
35TMS	12,130	2,178	2,394	39' 6"	8'	12' 6"	69 Gal.	114 Gal.	42 Gal.	40,000 BTU	18'
35TRE	12,228	2,114	2,296	39' 6"	8'	12' 6"	69 Gal.	114 Gal.	42 Gal.	40,000 BTU	18'
37QSB	12,507	2,268	2,017	39' 11"	8'	12' 6"	69 Gal.	96 Gal.	42 Gal.	40,000 BTU	18'
37TRL	12,189	2,355	2,768	39' 11"	8'	12' 6"	69 Gal.	90 Gal.	42 Gal.	40,000 BTU	21'
TIRE SIZE (All Models): ST235/85R16											

Vehicle loading - Every effort has been made to provide the greatest number of options for the recreational vehicle owner. Along with these choices comes the responsibility to manage the loads that are imposed by the choices that they remain within the manufacturer's specified chassis weight limits. Do not overload the recreational vehicle. Some optional equipment not included.

Net carrying capacity (NCC) is determined by subtracting unloaded vehicle weight (UVW) from gross vehicle weight (GVWR) and includes fluids, options and cargo. Liquid capacities and weights are approximations only. Warning - This information is intended as a guide only. Weights of individual vehicles may vary. Consult your owner's manual for complete loading, weighing and towing instructions. \*UVW and Hitch Dry Weight are base weights of units without options. Each unit includes a weight label which lists specific weight information for that unit.



# GRAND JUNCTION & GRAND JUNCTION GCR

## ·STANDARD & OPTIONAL FEATURES·

### STANDARD FEATURES

#### Frame/Chassis Construction

	GRAND JUNCTION	GCR
10" Powder-Coated Steel I-Beam Chassis	-	-
Drop-Frame, Stacked Rail Chassis for Additional Underbody Storage	-	-
Electric Front Jacks with Quick Release Pull Pin	-	-
Chassis-Mounted Dual Battery Trays with Battery Disconnect Switch	-	-
MAXXGarage Storage Design with Rubber Anti-Slip Flooring, Finished Walls and Ceiling, Lighting, Outlet and Cable Connection	-	-
Premium MOR/Ryde 4100 RE Rubber Shear Spring Suspension	-	-
Premium MOR/Ryde Rubber Shock Absorbing Hitch Pin	OPT	-
8 Lug Ultra-Lube Wheel Hubs	-	-
ST235/80R 16" LRE Nitrogen Filled Tires with Deluxe Aluminum Alloy Rims	-	-

#### Body/Coach Construction

	GRAND JUNCTION	GCR
6 Way Welded Aluminum Cage Construction	-	-
5 Way Vacuum-Bonded Lamination - Walls and Floor	-	-
High Gloss Gel Coat Fiberglass Exterior	-	-
80% Dark Tint, Radius-Corner, Safety Glass, UV-Rated Windows	-	-
Gel-Coat Molded Fiberglass Front Cap & Rear Cap	-	-
3" Thick Vacuum-Bonded, One-Piece Floor	-	-
5/8" Structurewood One-Piece Floor Decking	-	-
Enclosed/Insulated and Heated Underbelly - Tanks and Knife Valves	-	-
Premium Residential Carpet with Pad	-	-
3" Vacuum-Bonded, Bath and Bedroom Deck	-	-
Triple Seal Slide Out System with 12 Volt Motor and Manual Override	-	-

#### Roof/Ceiling

	GRAND JUNCTION	GCR
Welded Aluminum 5" Truss Style Walk-On Roof with 3/8" Roof Decking	-	-
R21 Roof Insulation with 2 Attic Vents	-	-
Radius Aluminum Roof to Wall Transition	-	-
EPDM Rubber Roof Membrane - 12 Year Manufacturer Warranty	-	-

#### R-Values

	GRAND JUNCTION	GCR
Roof R21, Floor R17, Walls R-9	-	-

#### Exterior Features

	GRAND JUNCTION	GCR
Transom Window Above Main Slide	-	-
Domed Tinted Skylight Above Shower	-	-
30" Radius-Corner Entry Door with Dead Bolt Lock and Screen Door	-	-
Power Electric Awning	-	-
Pivoting, XL Entry-Assist Handle	-	-
Rear Electric Stabilizer Jacks	-	-
16" Steel Rim Spare Tire and Carrier Recessed into Frame with Lift Kit Mechanism	-	-
Lighted Triple-Entry Steps	-	-
Exterior Patio and Hitch Light	-	-
Exterior Utility Station (includes - Gravity Water Fill, Exterior Hot & Cold Shower System, Black Tank Flush System, City Water Fill with Locking Protective Door, Utility Light, Cable and Phone Hook-Ups and Satellite Prep)	-	-
Rear Ladder	-	-

#### Electrical Systems & Lighting

	GRAND JUNCTION	GCR
Centralized Interior Electrical Command Center Near Entry Door	-	-
50 Amp Electrical Service with Detachable Marine-Grade Power Cord	-	-
75 Amp Converter with Battery Charger with Overcharge Protection	-	-
110 Volt GFI Exterior Receptacles	-	-
Residential Wall Switches and Dimmer Switches	-	-
Recessed Halogen Puck Lighting	-	-
Fluorescent Lighting in Galley and Desk Areas	-	-
Dome Pendant Light Above Dinette & Dome Light Above Sofa	-	-
Decorative Wall Sconces in Living Room and Bedroom	-	-

#### Plumbing System

	GRAND JUNCTION	GCR
12 Gallon Gas and Electric Quick Recovery Water Heater	-	-
Outside Shower with Quick Disconnect, Coiled, 25ft. Hose and Sprayer	-	-
Premium "PEX" Polyethylene Tubing and Metal Pressure Fittings	-	-
Sewer Hose Storage System	-	-
Hot and Cold Water, Low Point Drains	-	-
Convenient Access to Winterization System	-	-
69 Gallon Fresh Water Capacity	-	-
Washer/Dryer Prep (Stackable Capability)	-	-

#### Climate Control

	GRAND JUNCTION	GCR
40K BTU Furnace Forced Air Ducted Heat and Forced Air Heat in Underbelly	-	-
15K BTU Air Conditioner with Quick-Cool Vent	-	-
42" Reversible Ceiling Fan with Light Kit	-	-
Pre-Wired and Prepped for 2nd AC	-	-
Fantastic Fan with Rain Sensor in Galley and Bedroom	OPT	-

#### Cabinetry & Countertops

	GRAND JUNCTION	GCR
Corian® Solid Surface Countertops and Sink Covers	-	-
Corian® Signature Series Solid Surface Countertops and Sink Covers	-	-
Solid Wood Cabinet Stiles/Frames Drawer Fronts and Raised Panel Cabinet Doors	-	-
Mesa Oak or Canyon Cherry Stained Hardwood Cabinetry	-	-
Tuscan Walnut Stained Hardwood Cabinetry	-	-
Pre-Drilled & Screwed Residential Cabinet Construction	-	-
Decorative Slideout Fascia	-	-
6 Panel Passage Doors with Designer Oil-Rubbed Bronze Hardware	-	-
Overhead Cabinets with Mini-Struts & Top Mount Hinges	-	-
Stainless Steel, Ball-Bearing Drawer Glides with Adjustable Drawer Latch	-	-
Oil-Rubbed Bronze Hardware	-	-
Stained Glass Inserts with Curio Frames Above Sofa	-	-
Deep, Residential-Style Under-Mount Double-Bowl Galley Sink	-	-
High-Profile Galley Faucet with Retractable Sprayer	-	-

#### Window Treatments

	GRAND JUNCTION	GCR
Day/Night Fabric Shades and Designer Valances	-	-
Mini-Blinds in Kitchen	-	-

#### Entertainment Systems

	GRAND JUNCTION	GCR
Jensen 32" or 42" LCD HD Flat Screen TV - (see floorplans)	-	-
Premium Jensen Entertainment System - AM/FM/CD/DVD System (12-Volt Compatible)	-	-
Zone Switch, MP3/iPod Player Hookup On Stereo, Interior and Exterior Speakers	-	-
Satellite Prep, Cable Jack and TV Antenna with Power Booster	-	-
Jensen 19" LCD TV in Bedroom	-	-

#### Furniture & Appliances

	GRAND JUNCTION	GCR
Comfort Air Hide-A-Bed Sofa with Large Storage Compartment Below Sofa	-	-
End Table with Lamp	-	-
Dual Swivel Rocker Recliners	-	-
Ultra Leather Dual Swivel Rocker Recliners	-	-
Free-Standing, Sliding-Top Dinette Table with Flip-Up Storage	-	-
Four Designer Dinette Chairs with Below-Seat Storage	-	-
8 cu.ft. Double Door Refrigerator	-	-
Solid Ash, Raised Panel Refrigerator Inserts	-	-
Large 1.3 cu.ft. Over-the-Range Microwave with Integrated Exhaust Fan	-	-
Premium Half Time Microwave with Integrated Exhaust Fan	OPT	-
Amana Sealed 3-Burner Stove with 2 Piece Metal Cover	-	-
Entire Coach Water Filtration System	-	-
Central Vacuum System	OPT	-

#### Bath Area

	GRAND JUNCTION	GCR
One-Piece Neo-Angle Fiberglass Shower with Seat and Glass Door	-	-
One-Piece Rounded Fiberglass Shower with Seat and Glass Door	-	-
Oil-Rubbed Bronze Shower Hardware and Wand	-	-
Large Medicine Cabinet with Vanity Lights & Mirror	-	-
Corian Vanity Sink with Residential-Style Faucet	-	-
Thetford Porcelain Bowl Toilet	-	-
Power Vent	-	-
Oil-Rubbed Bronze Towel Hooks, Towel Bar, Toilet Tissue Holder	-	-

#### Bedroom Area

	GRAND JUNCTION	GCR
Premium 80" Long King or Queen Size Pillow-Top Mattress	-	-
Designer Headboard	-	-
Night Stands	-	-
Dresser with Overhead Cabinet	-	-
Premium Bedspread Package & Window Coverings	-	-
Front Wardrobe Ensemble With Sliding Mirror Doors, Hanging Space and Shelves	-	-
Washer Dryer Prep with Louvered Doors	-	-

Some features listed above may be part of a "Value Package" - Contact your local dealer for the details

#### OPTIONAL FEATURES

	OPT	STD
MOR/ryde Rubber Hitch Pin	OPT	STD
Premium Half Time Microwave with Integrated Exhaust Fan	OPT	STD
Slide-Out Awning Toppers	OPT	STD
Fantastic Fan with Rain Sensor in Bedroom (NA with Dual AC)	OPT	STD
Fantastic Fan with Rain Sensor in Galley/Main Living Area	OPT	STD
Central Vacuum System	OPT	STD
Duo-Pane Windows	OPT	OPT
Generator Prep	OPT	OPT
Onan Marquis Gold 5.5 kW LP Generator	OPT	OPT
Low Profile 13.5K BTU Bedroom AC-Direct Feed	OPT	OPT
Electric Fireplace	OPT	OPT
12 V Tank Pads	OPT	OPT
Granite Countertops	OPT	OPT
12 cu.ft. 4 Door Side-by-Side Refrigerator	OPT	OPT
Premium Select Comfort® Sleep Number™ 80" Long King or Queen Size Mattress	OPT	OPT

Visit us on the web for  
**MORE PHOTOS, NEW FLOORPLANS,  
 WARRANTY INFORMATION & MORE!**  
**WWW.GRANDJUNCTION-RV.COM**

**YOUR LOCAL DEALER**

**ONE YEAR LIMITED WARRANTY**  
 See Owner's Manual For Details

**THOR**  
 INDUSTRIES, INC.

Dutchmen Manufacturing, Inc.  
 2164 Caragana Court, Goshen, IN 46526  
 Ph. 574.534.1224 - Fax 574.975.0601

Product information, specifications, and photography in this brochure were as accurate as possible at time of printing. Photographs may contain some features that are optional on your vehicle. Since we continually strive to improve our products, actual products may differ. Prices and specifications are subject to change without notice. All capacities are approximate and dimensions are nominal. Some features shown are optional and may be different or unavailable in Canada. Vehicles are designed for recreational use only and not intended for use as a primary residence. All product brand names used in this brochure are registered trademarks of Thor Industries, Inc. Unauthorized use of trademarks is prohibited by law.

rev.1GJ2/09

©2009 Thor Industries, Inc.