

COLORADO

· FIFTH WHEELS ·

Colorado Fifth Wheels



Begin your adventures with Colorado.

Impeccably designed for discriminating tastes.

Designed for the discriminating RV owner, Colorado surrounds you in luxury and value. Colorado boasts elegant fifth wheel floorplans with spacious and functional kitchens, master baths and bedroom suites. The dazzling residential interior decors will captivate your senses!

Colorado - the industry leader in high content, value-priced fifth wheels.



35RB-BS with Summer Loden décor and Mesa Oak cabinetry





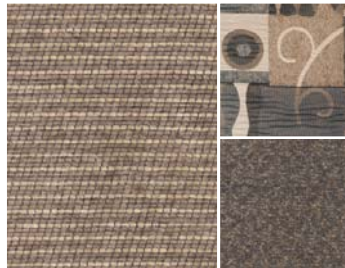
30SL-BS with Hyde Park Hickory décor and Canyon Cherry cabinetry

More premium standard features than the competition make Colorado one of the best values in the market. Solid wood cabinet doors, drawers and frames, designer slide fascia, residential carpet, home stereo, residential rockers, hide-a-bed sofa with air bed, night shades, 80% dark tint safety glass windows and premium kitchen appliances, brushed nickel cabinet hardware, 1.3 cu.ft. over-the-range microwave and high rise kitchen faucet are just a few of the standard features in Colorado.

Décor Choices



Mocha Leather



Anchorage Opal



Hyde Park Hickory



Summer Loden

Cabinetry Choices



Mesa Oak



Canyon Cherry



Competitive Advantages

Colorado is loaded with standard features that make it the best fifth wheel value in the industry.

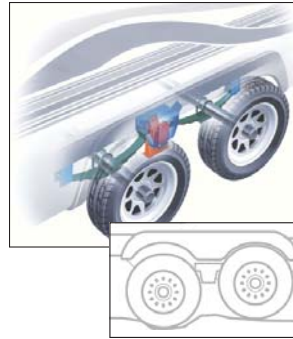
- 6 Way welded aluminum cage frame - walls, floor and roof!
- 5 Way lamination - walls (R9), floor & slide rooms
- Enclosed & heated underbelly & knife valves
- R14 roof insulation package
- Power electric awning
- 100% Hardwood, slot, screw and glue cabinet construction - doors, drawer & cabinets stiles
- MOR/ryde CRE 3000 suspension system
- 80% Dark tint safety glass windows
- High definition LCD TV
- Jensen home entertainment system
- 1" Thick, premium luggage doors
- 1.3 cubic foot, over the range, microwave with integrated fan
- Premium designer décor package
- Optional 19" HD LCD TV in bedroom

What does the competition offer?

Insulation "R" Values

Roof	R14	Floor	R17
Sidewalls	R9	Front/Rear Wall	R9

MOR/ryde System

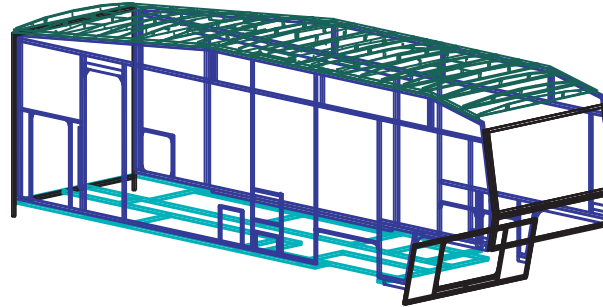


The MOR/ryde CRE 3000 system works with the existing leaf springs and axles, but replaces the steel leaf spring equalizer. It isolates and absorbs road shock and increases the dynamic travel of the leaf spring suspension.

The MOR/ryde RE system provides better protection of your trailer with up to a 30% improvement in the dampening of road shock. Reduced road travel shock means less wear and tear on your trailers components.

Colorado and MOR/ryde - You will feel the difference.

6-Way Welded Aluminum Cage Construction



Hardwood Cabinet Stiles



Colorado Hardwood Stiles, Slot & Screw Construction



Competitors' Vinyl-Wrapped Stiles, Staple Construction

Colorado features solid wood cabinet doors and stiles (frames). The hardwood stiles are screwed together and will retain their new appearance for years of durable use.

Most competitors use vinyl-wrapped MDF fiberboard doors and stapled, vinyl-wrapped stiles. The competitions less expensive construction may swell and delaminate over time.

Colorado construction - You can see the difference.

R14, 5-Layer Roof Construction

EPDM one-piece rubber roof with 12 year manufacturer warranty

3/8" decking, 4'x8' sheets taped at seams

Aluminum foil-wrapped foam air conditioning ducts - foil taped at seams

5" Arched aluminum roof rafters, 16" on center

R14 Fiberglass insulation - 2 layers

1/8" Decorative ceiling panel

Premium Laminated Wall Construction

High gloss exterior finish

80% Dark tint, safety glass windows

1/4" Underlayment

Tubular aluminum, welded box frame structure

Polystyrene "block foam" insulation

Vinyl-wrapped 1/8" decorative wall board

Laminated Floor Construction

Residential carpet

Carpet padding

Tile-like linoleum in galley & bath

5/8" One-piece Structurewood floor

Aluminum heat ducts - seams foil taped

Polystyrene block foam insulation

1 1/2" x 1 1/2" Welded aluminum box framed infrastructure

1/4" Backer board

Poly-flex 2000 vinyl vapor barrier

Plus, heated and enclosed underbelly is standard!

Safety Glass Windows



Colorado Dark Tint,
Safety Glass Windows



Competitors' Non-Tinted,
Non-Safety Glass Windows

Colorado features safety glass windows with 80% dark tint. Colorado's windows add security and privacy to your fifth wheel.

Most competitors offer non-tinted, non-safety glass windows standard, and charge extra for safety glass and dark tint windows.

Luggage Doors



Colorado 1" Thick Luggage
Doors



Competitors' 1/2" Thick
Luggage Doors

Colorado features a full 1" thick luggage door. Thicker luggage doors mean more insulation and safety for your travel trailer or fifth wheel.

Most competitors' doors are only a 1/2" thick, which reduces the insulation value of the sidewall. Plus, 1/2" doors are less secure.

Microwave



Colorado 1.3 Over-the-
Range Microwave



Competitors' Microwave

Colorado features a premium 1.3 cubic foot, over-the-range microwave with integrated fan and light. This adds more cabinet space above the microwave.

Most competitors offer a smaller microwave built into a separate cabinet, reducing storage. A range hood is below the cabinet taking up more space above the range.

Radius Roof Transition



Colorado Radius Roof



Competitors' Angled Roof

Colorado's five inch thick tapered roof trusses transition onto the sidewall a full four inches. This allows water to run off the roof to rain gutters. Plus, the extended rain gutters direct water away from the side of your trailer.

Most competitors butt their roofs into the sidewall. This may cause water to pool up at the edge, which may cause a leak.

Residential features with premium components.

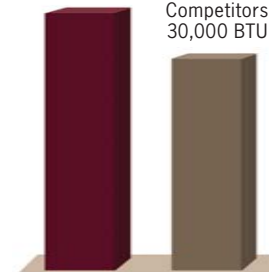


35RB-BS with Mesa Oak cabinetry

Heating System

Colorado's
35,000 BTU

Competitors
30,000 BTU

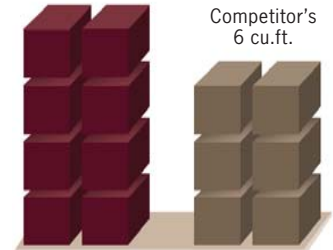


Colorado will keep you warm on those chilly evenings with a standard 35,000 forced air furnace. Most competitors only offer a 30,000 BTU furnace.

8 cu.ft. Refrigerator

Colorado's
8 cu.ft.

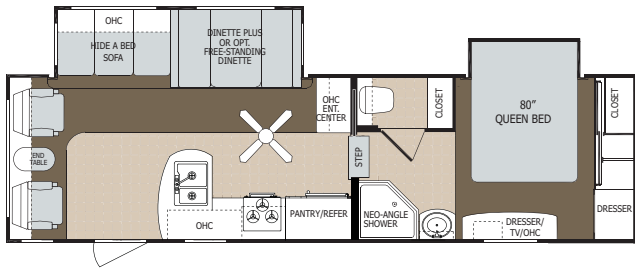
Competitor's
6 cu.ft.



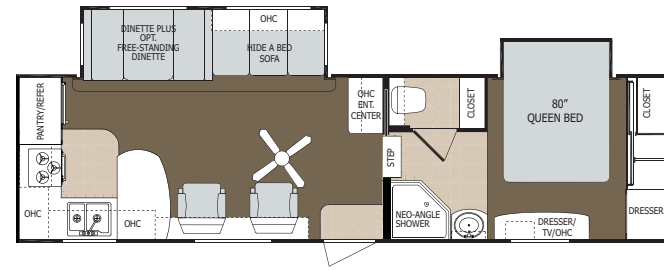
Colorado features an 8 cubic foot refrigerator as a standard feature.

What does the competition offer?

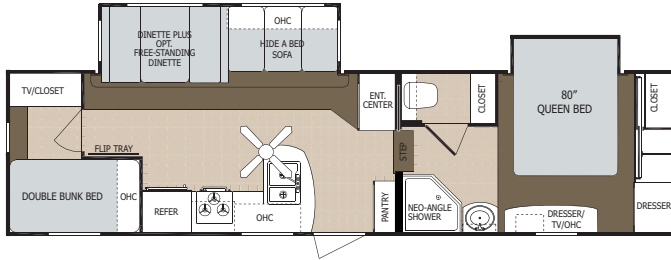
MID PROFILE FIFTH WHEELS



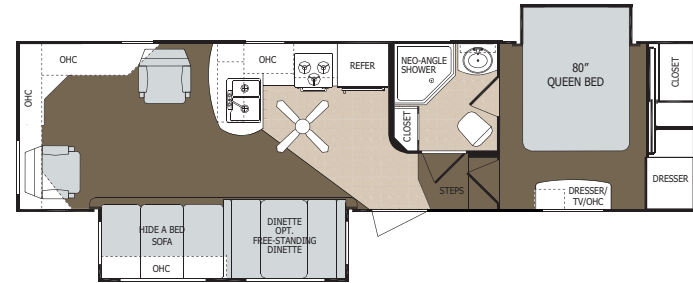
27RL-M5-BS



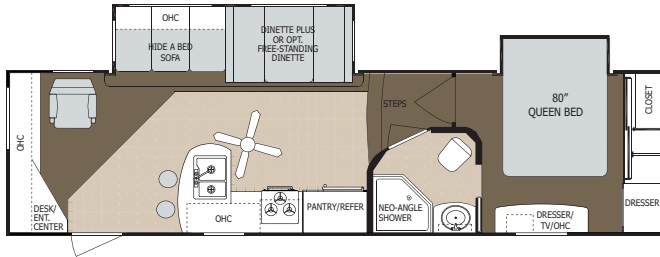
28RK-M5-BS



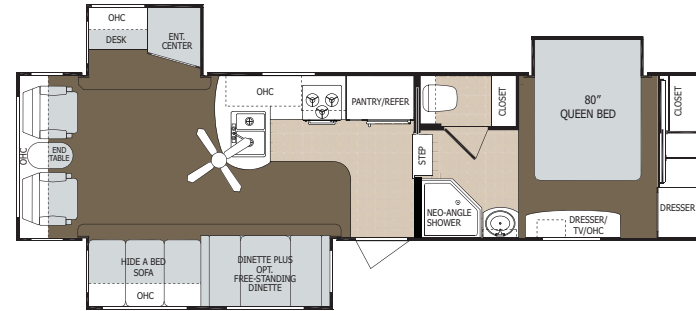
29BH-M5-BS



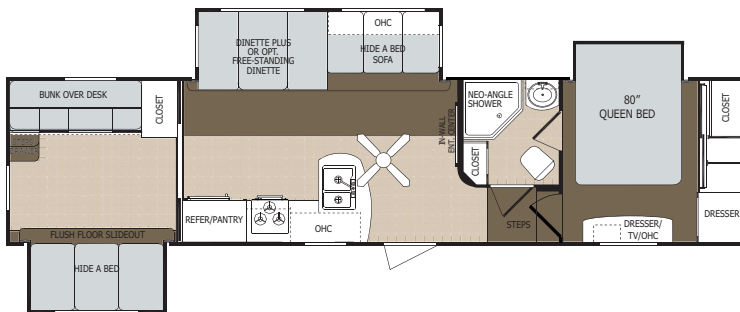
30CE-M5-BS



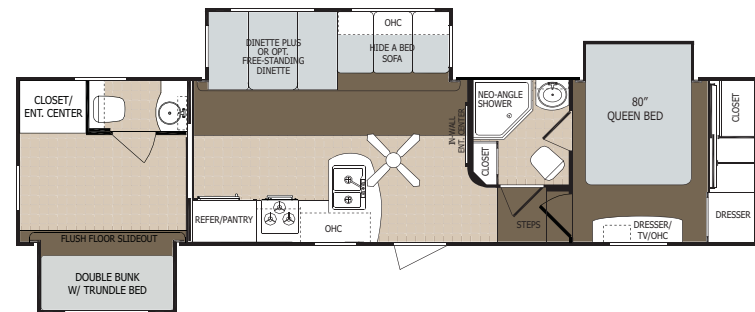
30SL-M5-BS



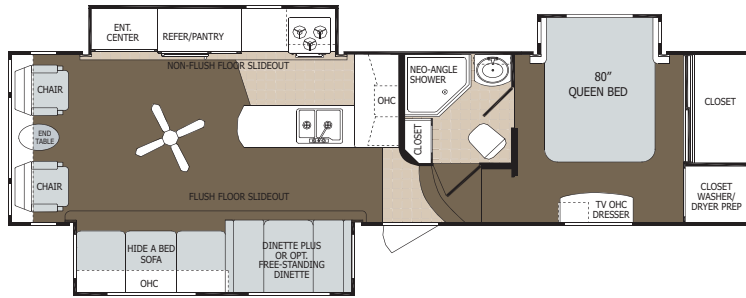
31RL-M5-BS



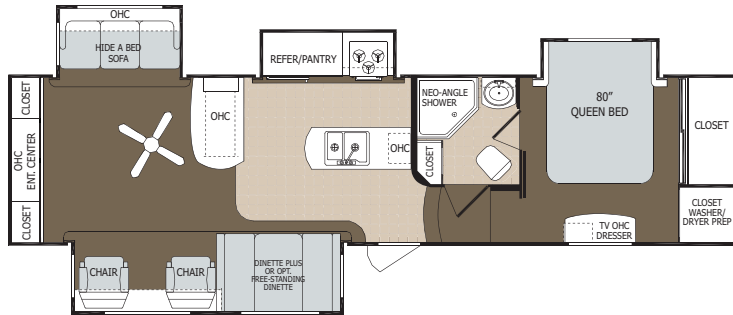
32QB-M5



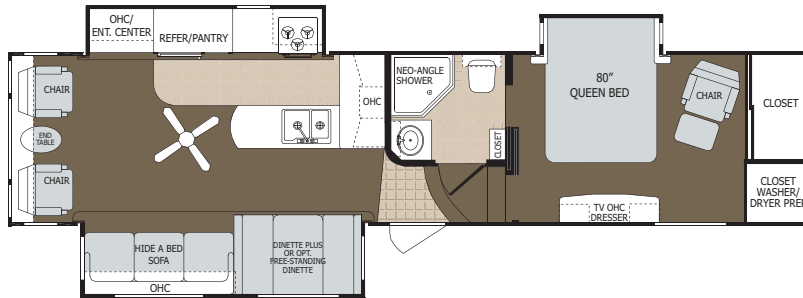
32QBH-M5-BS



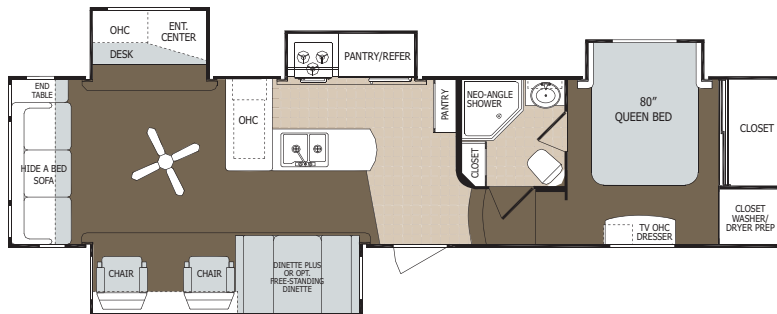
31BG-H5-BS



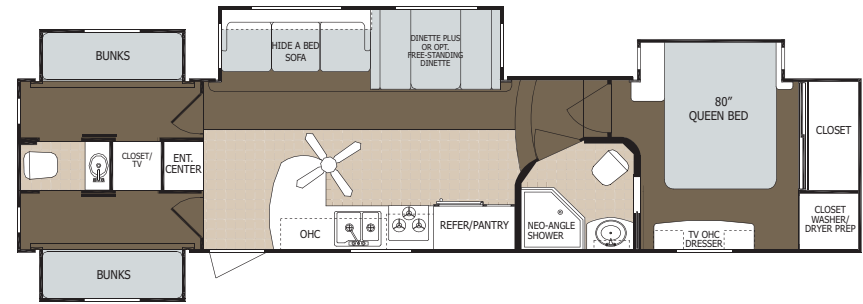
33RE-H5-BS



34MS-H5-BS



34QL-H5-BS



35RB-H5-BS

WEIGHTS & SPECIFICATIONS

Mid Profile Fifth Wheels	27RL-M5-BS	28RK-M5-BS	29BH-M5-BS	30CE-M5-BS	30SL-M5-BS
Exterior Length	31' 9"	32' 9"	34' 3"	33' 5"	34' 1"
Exterior Height	12'	12'	12'	12'	12'
Hitch Dry Weight	1,681	1,589	1,963	1,800	2,178
Unloaded Vehicle Weight	8,398	8,767	9,336	8,692	8,965
Net Cargo Capacity	3,556	3,187	2,618	3,262	2,989
Fresh Water Capacity (Gal.)	46	46	46	46	46
Grey Water Capacity (Gal.)	84	84	84	84	84
Black Water Capacity (Gal.)	42	42	42	42	42
Furnace Size (BTU's)	35,000	35,000	35,000	35,000	35,000
Water Heater Size (Gal.)	6 - opt 12	6 - opt 12	6 - opt 12	6 - opt 12	6 - opt 12
Awning Length	15'	14'	15'	12'	17'

Mid Profile Fifth Wheels	31RL-M5-BS	32QB-M5	32QBH-M5-BS
Exterior Length	34' 5"	37'	37'
Exterior Height	12'	12'	12'
Hitch Dry Weight	1,844	1,852	1,920
Unloaded Vehicle Weight	9,592	10,233	10,126
Net Cargo Capacity	2,362	1,721	1,828
Fresh Water Capacity (Gal.)	46	46	46
Grey Water Capacity (Gal.)	84	90	90
Black Water Capacity (Gal.)	42	48	90
Furnace Size (BTU's)	35,000	35,000	35,000
Water Heater Size (Gal.)	6 - opt 12	12	12
Awning Length	14'	17'	17'

Vehicle loading - Every effort has been made to provide the greatest number of options for the recreational vehicle owner. Along with these choices comes the responsibility to manage the loads that are imposed by the choices that they remain within the manufacturer's specified chassis weight limits. Do not overload the recreational vehicle. Some optional equipment not included.

Net carrying capacity (NCC) is determined by subtracting unloaded vehicle weight (UUVW) from gross vehicle weight (GVWR) and includes fluids, options and cargo. Liquid capacities and weights are approximations only. Warning - This information is intended as a guide only. Weights of individual vehicles may vary. Consult your owner's manual for complete loading, weighing and towing instructions. *UUVW and Hitch Dry Weight are base weights of units without options. Each unit includes a weight label which lists specific weight information for that unit.

High Profile Fifth Wheels	31BG-M5-BS	33RE-M5-BS	34MS-M5-BS	34QL-M5-BS	35RB-M5-BS
Exterior Length	35'	36' 6"	37' 10"	37' 11"	39' 6"
Exterior Height	12' 6"	12' 6"	12' 6"	12' 6"	12' 6"
Hitch Dry Weight	1,918	1,843	1,924	2,138	1,763
Unloaded Vehicle Weight	9,979	10,156	10,794	11,054	11,536
Net Cargo Capacity	3,878	3,701	3,063	2,803	3,421
Fresh Water Capacity (Gal.)	46	46	46	46	46
Grey Water Capacity (Gal.)	99	99	99	90	117
Black Water Capacity (Gal.)	42	42	42	48	75
Furnace Size (BTU's)	35,000	35,000	35,000	35,000	35,000
Water Heater Size (Gal.)	12	12	12	12	12
Awning Length	15'	16'	16'	16'	16'

COLORADO STANDARD & OPTIONAL FEATURES

STANDARD FEATURES

Frame/Chassis Construction

Steel I-Beam Powder Coated Chassis
MOR/ryde CRE 3000 Suspension System
6 Lug Ultra-lube Wheel Hubs (8 Lug on High Profile)
16" Nitrogen Filled Radial Tires with Aluminum Rims
16" Spare Tire with Steel Rim
Electric 12.25" Drum Braking System
Extended Hitch Pin

Body/Coach Construction

6 Way Welded Aluminum Cage Construction
5 Way Vacuum-Bonded Lamination - Walls and Floor
80% Dark Tint "Safety Glass" Windows
Front Cap: Gel Coat Molded Fiberglass
3" Vacuum Bonded One-Piece Floor Construction
5/8" Structurewood One-Piece Decking

Roof/Ceiling

Welded Aluminum 5" Truss Style Walk-On Roof
3/8" Roof Decking
R14 Roof Insulation
Radius Aluminum Roof to Wall Transition
EPDM Rubber Roof Membrane - 12 Year Warranty

Storage Compartment

1" Thick Aluminum Framed Luggage Door with Lock
Lighted Baggage Areas
Below Frame Saddle Bag Storage
Ozite Carpet Floor Liner

Exterior Features

80% Tinted, Radius-Corner, "Safety Glass" Vented Windows
Domed Skylight Above Shower
30" Wide Radius Corner Entry Door with Dead Bolt Lock
Screen Door
Power Electric Awning
Pivoting XL Entry Assist Handle
12V Electric, Triple Seal Slide System
Electric Front Jacks with Quick Release Pads
Heated, Insulated & Enclosed Underbelly, Tanks and Knife Valves
Steel Triple Entry Steps with Light
Molded ABS Fender Wells
Exterior Patio & Utility Lights
Exterior Hitch Light
Exterior Shower System with Hot & Cold Water & Quick-Connect Coiled 25 ft. Hose with Sprayer
Black Tank Flush System
Cable, Satellite and Phone Hook-up
Rear Ladder
Attic Roof Vent
Drip Rail Gutter System
Extended Gutter Spout

Electrical Systems & Lighting

Interior Electrical Command Center Near Entry Door
30 Amp (M5's) or 50 Amp (H5's) Electrical Service with Detachable Marine-Grade Power Cord
65 Amp Converter
110V GFI Exterior Receptacles
Enclosed/Vented Battery Box

Residential Wall Switches

Dome Light above Sofa and Dinette
Decorative Wall Sconces in Bedroom

Plumbing System

6 or 12 Gallon Gas and Electric Water Heater (see floorplan specifications)
Shurflo Water Pump
"PEX" Polyethylene Tubing with Metal Pressure Fittings
Sewer Hose Storage System
Hot and Cold Water Low Point Drains
Washer/Dryer Prep (H5's only)

Climate Control

35K BTU Furnace
13.5K BTU Air Conditioner with Quick Cool Vent
Ceiling Ducted AC Vents
Ceiling Fan with Lights
Mold Resistant, Aluminum-Wrapped AC Plenum

Cabinetry & Countertops

Pre-Drilled & Screwed Hardwood Cabinet Construction
Solid Wood Cabinet Stiles/Frames and Drawer fronts
Solid Ash Raised Panel Cabinet Doors
7 Ply Residential-Grade Plywood Drawer Construction
Ball-Bearing Drawer Glides and Catch
Oil Rubbed Bronze Hardware

Other Interior Features

Residential Carpet with Pad
Decorative Slideout Fascia
6 Panel Passage Doors with Oil Rubbed Bronze Hardware
Overhead Cabinets with Mini Struts & Top Mount Hinges in Sofa Slideout
Tuff Guard Linoleum
Oil Rubbed Bronze High Rise Galley Faucet
Extra Large, Dual Basin Galley Sink with Sink Covers

Window Treatments

Pleated Night Shades
Mini-Blinds (at Kitchen Sink Window)
Designer Fabric-Wrapped Valances

Entertainment Systems

Premium Jensen Entertainment System: AM/FM/CD/DVD System (12-Volt Compatible), Zone Switch, MP3/iPod Hook-up on Stereo, Interior and Exterior Speakers
32" or 42" Jensen LCD HD TV in Living Area
TV Antenna with Power Booster
Bedroom TV Prep

Furniture & Appliances

Comfort Air Hide-A-Bed Sofa with Large Storage Compartment Below Sofa
Two Residential "Zero Wall" Recliners (see floorplans)
Booth Dinette
8 cu.ft. Double Door Refrigerator
Solid Ash Refrigerator Insert Panels
1.3 cu.ft. Over-the-Range Microwave with Integrated Exhaust Fan
Amana 3-Burner Stove & Oven with 2 Piece Metal Range Cover

Bath Area

Neo-Angle Shower with Glass Shower Door
Deluxe Shower Hardware with Wand
Large Medicine Cabinet with Vanity Lights & Mirror
Fiberglass Vanity Sink
Residential-Style Oil-Rubbed Bronze Vanity Faucet
Residential Six-Panel Lavatory Doors

Porcelain Bowl Thetford Toilet

Power Roof Vent
Toilet Tissue Holder
Towel Hooks and Bar

Bedroom Area

60" x 80" Queen-Size Innerspring Mattress
Bedroom Slide with Decorative Slide Fascia
TV Prep
Premium Bedspread Package, Headboard and Window Coverings
Below Bed Storage
Front Wardrobe Ensemble with Hutch
Sliding Mirrored Closet Doors with Hanging Storage
Some features listed above may be part of a "Value Package" - Contact your local dealer for the details

OPTIONAL FEATURES

Electric Rear Jacks
50 Amp Service on Mid Profile (Standard on High Profile)
15K BTU Air Conditioning
Corian Solid Surface Countertops
Duo-Pane Windows
Slide-Out Awning Toppers
Fantastic Fan with Rain Sensor in Bedroom
Fantastic Fan with Rain Sensor in Galley/Main Living
Second AC in Bedroom (50 Amp Service Recommended)
12V Tank Pads
Central Vacuum System
Free-Standing Table with 4 Chairs with Below-Seat Storage
Fireplace (High Profile Only)
19" LCD HD TV in bedroom
12 Gallon Water Heater (Standard in Some Floorplans, See Specifications for Details)
Choice of Mesa Oak or Canyon Cherry Wood Cabinetry



YOUR LOCAL DEALER

ONE YEAR LIMITED WARRANTY
See Owner's Manual For Details

THOR
INDUSTRIES, INC.

Dutchmen Manufacturing, Inc.
2164 Caragana Court, Goshen, IN 46526
Ph. 574.534.1224 - Fax 574.975.0601