

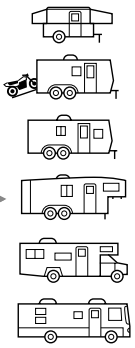
COACHMEN | 2009 CHAPARRAL FIFTH WHEELS

Easy



2009
Coachmen **Chaparral**[™]
Comfort Where it Counts.





Chaparral™



It's Easy.

You've worked hard. Now comes the easy part, give yourself the reward you deserve with Chaparral by Coachmen. 🐾 Designed for today's pickups, Chaparral is loaded with thoughtful, easy-living amenities for over-the-road comfort and convenience. 🐾 Single, double and triple slide floorplan offerings give you a selection of incredibly spacious, and easy to tow fifth wheels. So go ahead, step up to a fifth wheel that's as smart as you are. Step up to Chaparral.



After a full day of activities, Chaparral is a great place for family and friends to gather. There's a fully equipped galley with double door refrigerator, seamless countertops, three-burner range with oven and microwave. There's plenty of comfort in the swivel rocker lounge chairs and sofa (with storage drawer underneath). Shown is the Chaparral Lite 268RLE with Tuscan Maple cabinetry, Shimmering Bronze décor, residential dinette with four chairs and entertainment center with LCD TV. Think of it as big living!



Mid Profile



Lite Profile

Features that matter.



EASY LIVING

Who says you can't take it with you? The optional hide-a-bed air mattress inflates easily and quickly, sleeps comfortably and lets you take more family and friends along.



Under the full size couch there are pullout drawer(s) for storage that let you take more gear with you.



EASY ENTERTAINMENT

After the day's fun, you can sit back and listen to the 5.1 surround system with DVD/CD player, watch your favorite shows on the optional LCD television and enjoy the visual warmth of the optional fireplace (on select models). Easy. Convenient!



Two easy choices, one great name

With three models base weights starting under 7,000 lbs. you can choose a Chaparral Lite and still tow with your 1/2-ton pickup truck. If you want a few more amenities and slideouts, plus the convenience of a Turn-Rite™ front cap, choose a Chaparral mid-profile and tow with your 3/4-ton pickup truck, even if it's a short bed.

Both give you more value for the dollar. Loaded with easy living amenities, Chaparral and Chaparral Lite put easy enjoyment back in RVing.

Play hard during the day, sleep in comfort at night. The bedroom in the 278DS has a walk-around queen size bed with deluxe pillowtop mattress and designer bedspread and window treatment. There's a closet for hanging clothes, an under the window dresser and extra storage space in the bed lift storage system. Sweet dreams!

Visit our website anytime at www.easyRVing.com

for more information and easy shopping tools like

- Finding the right Coachmen for you.
- Comparing different Coachmen models.
- Building your own RV.





2009 Coachmen Chaparral™ Easy.

Comfort Where it Counts.

It's easy to enjoy a Chaparral. You're surrounded with residential style cabinetry, designer window treatments, a plush sofa and oil rubbed bronze hardware and fixtures. Shown is Lakeside Maple and Bali Sage decor. The Chaparral Mid Profile 278DS has dual reclining theatre seats and an extra long sofa with ottoman. Life is good!



Decor Choices

FABRIC KEY
A. Main **B.** Accent **C.** Bedspread

Coachmen's dazzling interiors feature top-grade fabrics that have been tested for maximum durability.

Décor selections are subject to change throughout the model year. Please visit your Coachmen dealer or www.easyRVing.com for current décor availability.



CAMEO CASCADE



SHIMMERING BRONZE



BALI SAGE



LAKESIDE MAPLE



TUSCANY MAPLE

Easy Features

	LITE	MID		LITE	MID		LITE	MID		LITE	MID
LIVING APPOINTMENTS											
Tuscany Maple cabinetry	S	S	Cable TV jacks (coach and bedroom)	P	P	High spout kitchen faucet	S	S	Radius entrance and baggage doors	P	P
Lakeside Maple cabinetry	O	O	Pre-wired for satellite dish	S	S	10-gallon gas/electric E.I. water heater	S	S	Powder coated I-beam frame	S	S
Hardwood cabinet doors	S	S	Phone jack	S	S	Water heater by-pass valve	S	S	Retractable stabilizer jacks	S	S
Full extension ball bearing drawer guides	S	S	TV antenna	P	P	Porcelain toilet with foot pedal flush	S	S	Fully enclosed and heated tanks and valves	S	S
Techwood drawer sides	S	S	3-burner range with oven	S	S	Black tank flush	-	S	Power front hitch jack	S	P
Under sink silverware drawer (most models)	S	S	Lighted power range hood	S	S	Monitor panel	S	S	Quick release landing gear pins	S	S
Linoleum flooring (kitchen and bath)	S	S	Large double door refrigerator	S	S	Demand water pump	S	S	CSA upfit (mandatory for all Canadian provinces)	O	O
Carpet (living and bedroom)	S	S	Designer refrigerator door inserts	P	P	Skylight over shower	P	P			
Pleated window shades	P	P	Microwave oven	P	P	Glass shower enclosure	P	P	SAFETY AND SECURITY		
Designer window treatments	S	S	Double bowl kitchen sink	P	S	ABS shower surround	S	S	LP leak alarm	S	S
Sofa with storage drawer	S	S	Kitchen sink covers	S	S	Outside spray station	P	P	Fire extinguisher	S	S
Swivel lounge chairs (most models, option on 278DS)	S	S						Smoke detector	S	S	
Upgraded recliner lounge chairs (278DS, 322RLTS)	-	O	HEATING & AIR CONDITIONING			EXTERIOR AND CONSTRUCTION			Carbon monoxide detector	S	S
Dual reclining theatre seats (278DS)	-	S	31,000 BTU E.I. furnace	S	S	Flush floor main slideout rooms	S	S	Entrance door dead bolt lock	S	S
Jumbo booth dinette with pedestal table	S	S	15,000 BTU ducted roof air conditioner	P	P	Rack and pinion slide system	S	S	Break away switch	S	S
Residential dinette with four chairs	O	O	Even Cool™ insulated A/C ducting	S	S	Alumicage™ sidewalls and floor	S	S	Tinted safety glass windows	P	O
Skylight in living area	O	O	11,000 BTU bedroom air conditioner (includes 50 amp service)	-	O	Smooth fiberglass exterior sidewall	S	S	Tinted thermopane safety glass windows	O	P
Fireplace (268RLE, 322RLTS, 340QBS)	O	O	Ceiling fan with light kit	-	S	High gloss exterior sidewall	S	-	Exterior security light	O	P
Designer seamless countertops	S	S	Comfort air ventilator fan	-	O	Fiberglass wrapped front	S	-	Owners information package	O	O
			Power bath vent	S	S	Custom molded fiberglass front cap	-	S			
						Turn-Rite™ front cap with hitch mirror	-	S			
						Triple entry step	S	S			
						Folding assist entry door handle	S	P			
						Aluminum wheels	O	O			
						Spare tire kit	O	P			
						Rear pull out bike rack	-	S			
						Lighted pass-through storage	S	S			
						Extended hitch pin	S	S			
						Roof ladder	P	P			
						One-piece rubber roof	S	S			
						Power patio awning	P	P			
						Quick connect LP fitting	-	S			
						Stainless steel portable gas grill	-	O			
						(N/A on units shipped to Canada)	-	-			
						30" wide entrance door	S	S			

= Easy Feature

S = Standard
O = Optional
P = Essential Package*

*Essential package items are required options.

Chaparral

Specifications	Lite Profile				Mid Profile			
	267RLS	268RLE	270RKS	298RBS	278DS	299TSB	322RLTS	340QBDS
Base weight	6,536	6,877	6,746	8,267	8,086	9,143	8,565	9,209
Carrying capacity	2,562	2,349	2,399	2,380	3,573	2,647	3,024	2,505
Hitch weight	1,098	1,226	1,146	1,147	1,659	1,790	1,812	1,714
Interior height (upper deck)	64"	64"	64"	64"	64"	64"	64"	64"
Exterior height (includes A/C)	11'11"	11'11"	11'11"	12'1"	12'	12'	12'	12'
Exterior length	28'10"	30'3"	30'3"	32'8"	33'	34'	34'	38'
Exterior width	8'	8'	8'	8'	8'	8'	8'	8'
Awning length	14'	14'	14'	14'	14'	14'	14'	14'
Sleeping capacity	6	6	6	9	6	9	6	10
Exterior storage capacity (cu. ft.)	45	45	45	45	45	45	45	45
Fresh water capacity (gal.)	40	40	40	40	47	47	47	47
Waste water capacity (gal.)	30	30	30	60	45	90	45	90
Gray water capacity (gal.)	30	60	60	60	90	90	90	45
Water heater capacity (gal.)	10	10	10	10	10	10	10	10
Tire size	15"	15"	15"	15"	15"	15"	15"	15"
LP gas capacity (lbs)	60	60	60	60	60	60	60	60
Furnace rating (x 1,000) BTU	31	31	31	31	31	31	31	31

Base weight: The weight of the unit with no fluids, cargo, optional equipment or accessories.
Carrying capacity: The amount of weight available for all fluids, cargo, optional equipment and accessories. The actual "loaded" weight will depend on the equipped unit and the owner's individual choice of cargo, etc.

EASY DESIGN



The cap mounted hitch mirror on the Mid Profile Chaparral makes it that much easier to maneuver your truck into position.



Large pass-through storage on all models makes it easy to take everything you need for fun.



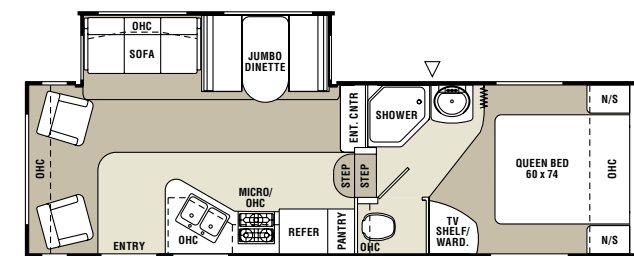
Use it when you need it, store it when you don't. The rear pull-out bike rack makes it easy to take the family bikes with you (Mid Profile models).



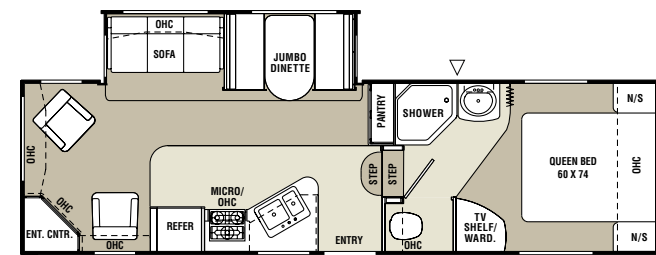
Lite Profile — 1/2 Ton Towable • Easy Living Floorplans



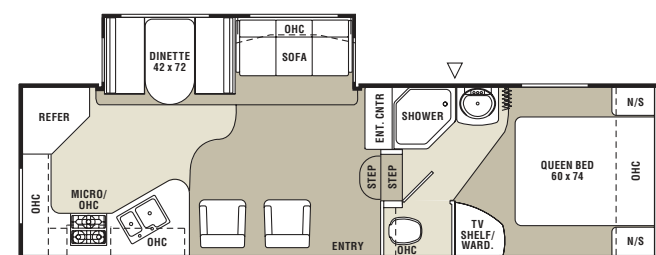
Mid Profile — 3/4 Ton Towable • Easy Living Floorplans



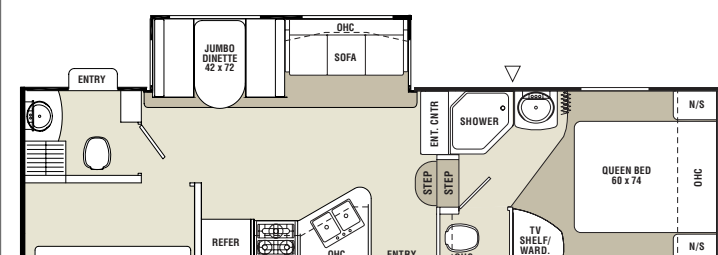
267RLS | Base Weight: 6,536 | Sleeps 6



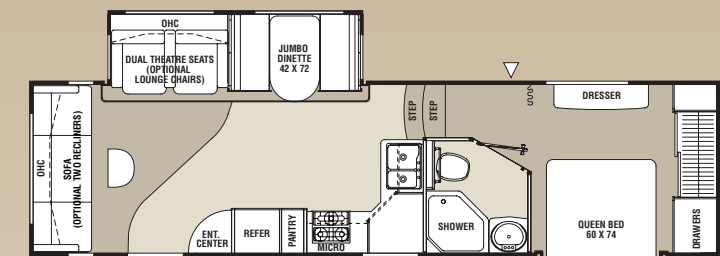
268RLE | Base Weight: 6,877 | Sleeps 6



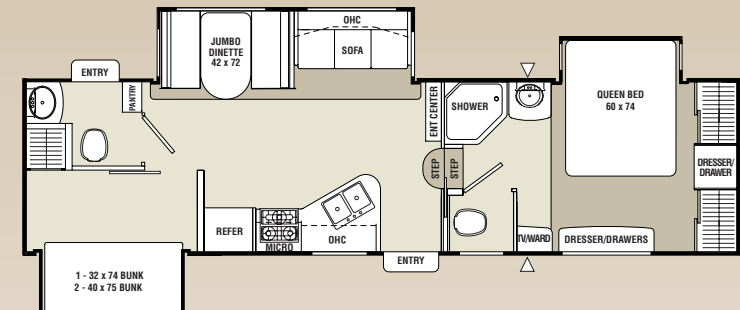
270RKS | Base Weight: 6,746 | Sleeps 6



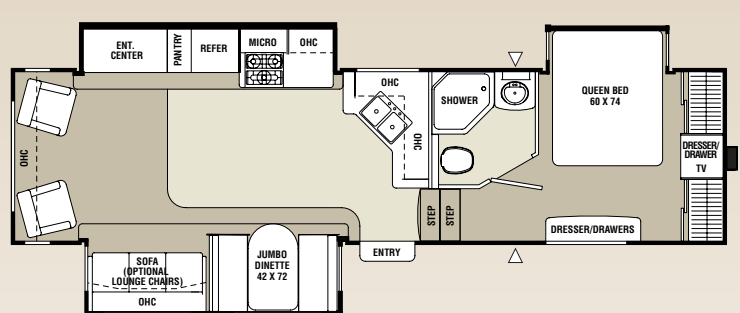
298RBS | Base Weight: 8,267 | Sleeps 9



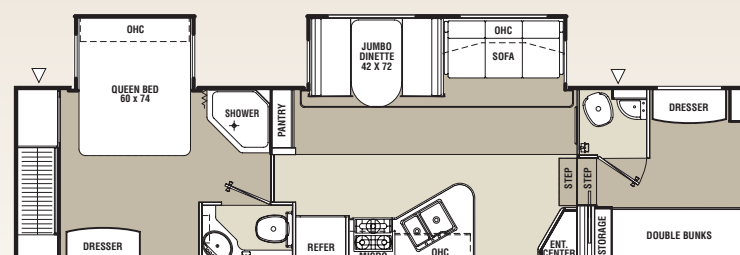
278DS | Base Weight: 8,086 | Sleeps 6



299TSB | Base Weight: 9,143 | Sleeps 9



322RLTS | Base Weight: 8,565 | Sleeps 6



340QBDS | Base Weight: 9,209 | Sleeps 10

Outside Storage Location
 Carpet
 Linoleum

Ask your dealer about these Coachmen exclusive design features.



SureLine™ custom wiring harness provides color coded wires grouped together in a protective autoloam covering. Specific wiring schematics make for easy serviceability.



Maximize your cooling efficiency with the **Even Cool™** air conditioning system. Insulated ductwork with radiused corners provide for smooth air flow.



Aircraft-grade aluminum-framed construction throughout the walls and floor provides a solid and lightweight superstructure for the Chaparral.

Quality Construction

1. Custom molded fiberglass front cap (Mid Profile only)
2. Powder coated I-beam chassis frame
3. Laminated aluminum framed sidewalls
4. Laminated aluminum framed floor
5. Rack and pinion slide room mechanism
6. Dark tint safety glass windows
7. One-piece rubber roof membrane with 12-year warranty
8. Crowned roof truss
9. Turn-Rite™ short bed compliant front cap (Mid Profile only)
10. Cap mounted hitch mirror (Mid Profile only)



R-Values
 Roof (R-13.4)
 Walls (R-11.1)
 Floor (R-11.4)

Towing Guide

The Chaparral is designed with the new generation of vehicles and lifestyle in mind. This 2008 guide is provided as a general reference and lists the model, engine and published maximum towing capacity for many of today's popular pickup trucks. This guide does not attempt to provide all necessary information such as axle ratios, cooling systems, transmissions and any additional equipment required by the tow vehicle manufacturer to achieve the published maximum towing limits. Please be sure to verify your particular tow vehicle manufacturer's specifications. Your Coachmen dealer will be glad to help you with questions.

MODEL	CAB TYPE	V8 ENGINE	TOW CAPACITY
FORD			
F-150	Reg Cab	4.6L / 5.4L	7,100 / 9,800
F-150	Super Cab	4.6L / 5.4L	7,000 / 9,500
F-150	Super Crew	4.6L / 5.4L	6,800 / 9,500
GENERAL MOTORS			
1500	Reg Cab	4.8L / 5.3L	7,900 / 8,900
1500	Ext Cab	4.8L / 5.3L / 6.0L	7,500 / 8,500 / 10,500
1500	Crew Cab	5.3L / 6.0L	8,500 / 10,200
DODGE			
Ram 1500	Reg Cab	4.7L / 5.7L	7,650 / 9,100
Ram 1500	Quad Cab	4.7L / 5.7L	7,300 / 8,750
Ram 1500	Mega Cab	5.7L	8,900
NISSAN			
Titan	King Cab	5.6L	9,500
Titan	Crew Cab	5.6L	9,400
TOYOTA			
Tundra	Reg Cab	4.7L / 5.7L	8,500 / 10,800
Tundra	Double Cab	4.7L / 5.7L	8,500 / 10,600
Tundra	Crew Max	5.7L	10,000+



Easy to Use. Really.

Pete symbolizes our commitment to being your best friend on the road. Like Pete, we're always there to make sure your Coachmen RV is as easy and uncomplicated as possible, so you can escape life's hassles and enjoy RVing more.

Your Coachmen RV will be easy to buy, easy to use and easy to own. That's our promise to you. We accomplish this through clever designs and superior support after the sale. But the real measure of "easy" is in the countless thoughtful touches we include throughout your new Coachmen RV.

Easy to Own. Honest.

Our commitment to you is your ongoing satisfaction. Dealers are authorized to solve your problems on the spot and get you on your way without fuss or hassle. Should you ever need service or repair, it is easy to find one of the hundreds of Coachmen dealers or authorized repair centers nationwide.

Our toll-free service hotline (800-453-6064) and online service support center put you in touch with a Coachmen service representative, warranty information, maintenance information, troubleshooting tips, dealer locations and other helpful information. Coachmen. You couldn't ask for an easier traveling companion.

Travel Easy™. Always.

RVing is easier with Coachmen's *Travel Easy*™ Roadside Assistance included for the first year on most new motorized and towable Coachmen RVs*. Administered by Coach-Net®, this service provides you with 24/7 operational, technical and emergency road service coverage. Anywhere. Anytime. *Travel Easy*™ is the security of knowing that help is an easy phone call away.



*See your dealer for details.

All information contained in this brochure is believed to be accurate at the time of publication. However, during the model year, it may be necessary to make revisions, and Coachmen reserves the right to make all such changes without notice, including changes in prices, colors, materials, equipment and specifications, as well as the addition of new models and the discontinuance of models shown in this brochure. Therefore, please consult with your Coachmen dealer and confirm the existence of any materials, design or specifications that are material to your purchase decision.

COA-131 5.08 Printed in USA



Coachmen
Life should be so easy.

Coachmen Recreational Vehicle Company, LLC
P.O. Box 30, Middlebury, IN 46540



Easy to Enjoy. Seriously.

Purchase a new Coachmen RV and receive a free one-year membership in the Coachmen Owners' Association (C.O.A.).

You'll enjoy exclusive discounts at campgrounds, theme parks and fuel stations. You'll also receive concierge service 24/7 so you can find and buy what you need, often at big discounts!

Other benefits include trip routing, vacation packages, event reservations, mail forwarding and our helpful owners magazine — Easy RVing. Plus annual camping events, a support network and services for first-time buyers.

Take advantage of your C.O.A. membership today by calling 888-422-2582.

To see how Coachmen is making the easy life even easier, visit www.easyRVing.com or call 1.800.353.7383.