

DAMON

# ASTORIA

2008



# MORE POWER. MORE PERFORMANCE.



*Lots of wide-open spaces await you in Astoria. Designer décor has never been more evident, enhanced by rich, raised-panel hardwood cabinet doors and other luxury fabrics. Storage space is in abundance, too.*

Astoria gets its extra “oomph” of power and performance from its 6-speed 340-hp Cummins® ISB diesel engine (increased from last year) and super rugged Freightliner® chassis. With almost a 15% increase in horsepower, Astoria can climb the tallest peaks without breaking a sweat.

Enormously livable, the beautiful new Astoria interior offers the same spacious room and many of the amenities you would find in your own home. Depending on which floor plan you favor, you can choose from a 42", 32" or 27" LCD TV to keep your family entertained. (Because customers have requested it, TVs are no longer in the cockpit overhead except for the 3679 floor plan.) And the large and stylish living area, with comfy love seat, designer hide-a-bed and Dream Dinette, will put you in the lap of luxury wherever your travels take you. Living large has never been easier.

# MORE BEAUTIFUL INTERIOR DÉCORS.



3772 Pacific Edition, Liberty Lane, Cherry

The contemporary cockpit includes a back-up system with a large 7" monitor and audio to help make backing up safer and easier. The large panoramic one-piece windshield offers safety, security and an expansive view of the road ahead. Great music gets even better with the premium AM/FM radio and in-dash CD player with 4-speaker sound. And the Nature's Choice leather reclining driver and passenger Flexsteel seats provide exceptional comfort over the long haul.

Of course the bottom line is value, and this is where Astoria really shines. With all of the power and performance, the luxury, the over-the-top amenities and features, Astoria is still remarkably affordable.

*Distinctive styling and refined comfort features put Astoria in a class by itself. Everything is thoughtfully laid out to make living the RV life as convenient and trouble-free as possible. Nature's Choice leather bide-a-bed optional on both Astoria and Astoria Pacific Edition as shown.*

# GO TO THE HEAD OF THE CLASS —



3770 Pacific Edition, Kitchen with Honey Maple

B

# WITH ASTORIA'S PACIFIC EDITION.



3772 Pacific Edition, Liberty Lane, Cherry

C

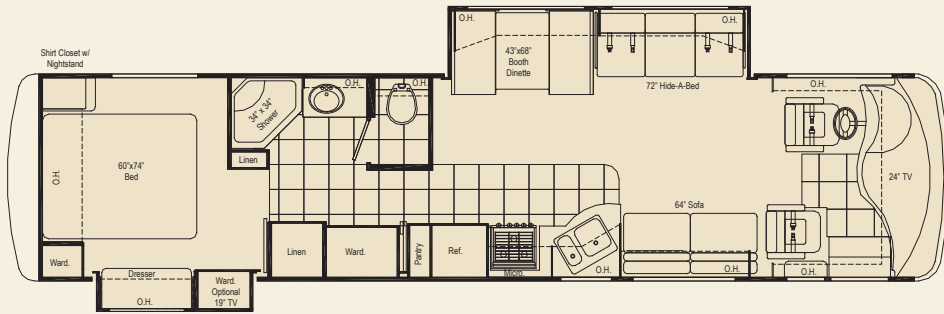


D

There's nothing wrong with a little showing off among friends. That's exactly how you'll feel with the new Astoria Pacific Edition — now newly upgraded and better than ever. Not only is it incredibly stylish, but it has one serious list of standard features (amazing amenities you would pay extra for on most competitive motorhomes). Like the beautiful full-body paint package, a complete Surroundsound® home theater package including LCD TV (except 3679) with full function remote, antenna, booster and jack, and the wonderfully adaptable Dream Dinette that transforms from a beautiful dining table to an extremely comfortable bed.

Exceptional value. Whether you choose the Astoria or the Astoria Pacific Edition, you get premium quality (and luxury) at a very affordable price. That's the beauty of Astoria.

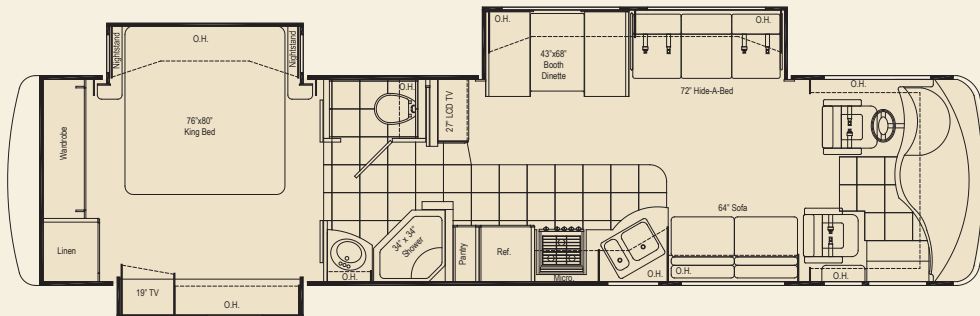
- A. *The spacious bathroom offers plenty of extra storage and lots of sunlight, thanks to the skylight in the shower. Step up to the Pacific Edition bath and elegant ceramic tile flooring.*
- B. *The upgraded Pacific Edition kitchen, shown here with luscious Honey Maple raised-panel hardwood cabinet doors and refrigerator front, may just rival the kitchen in your own home. Beautiful ceramic tile flooring and solid-surface countertops with flush mount range cover complement this stylish kitchen.*
- C. *Indulge yourself in the beautiful bedroom, featuring a rich, rounded designer headboard, plus a AM/FM stereo CD player and 19" color TV.*
- D. *The contemporary cockpit includes a back-up system with a large 7" monitor and audio to help make backing up safer and easier. The large panoramic one-piece windshield offers safety, security and a much larger view of the road ahead.*



**3679** Double slide – living area slideout, wardrobe slide and large kitchen counter.



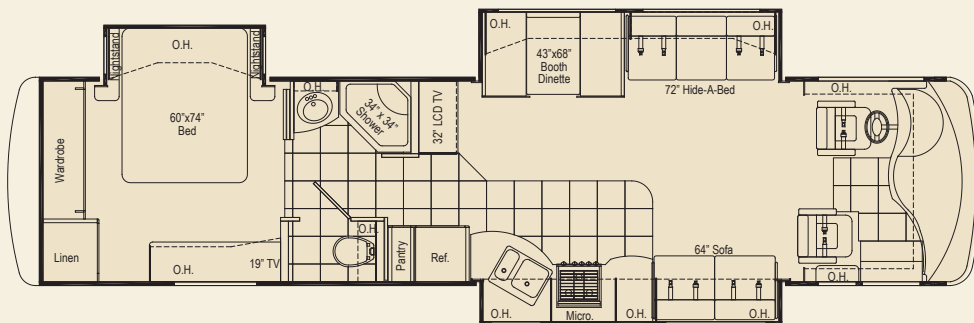
*Grand Central*



**3770** Triple slide, 27" LCD TV, large wardrobe across back of unit, king bed – largest in industry, 76" X 80".



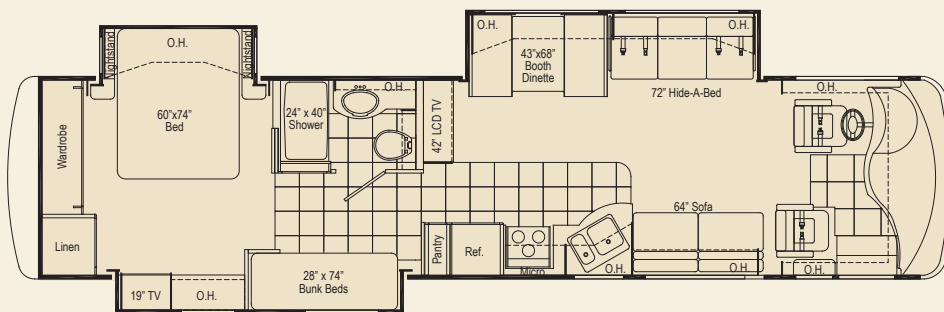
*Coney Island*



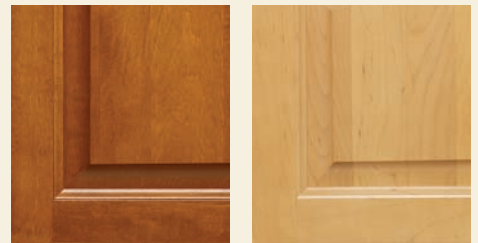
**3772** Triple slide, 32" LCD TV, large wardrobe across back of unit, flat floor around bed, two slideouts in living area.



*Liberty Lane*



**3776** Triple slide, two bedrooms with sleeping capacity of 8, solid door separation between bedrooms, private side bath, entertainment center with 15" LCD TV in bunk area.



*Cherry*

*Honey Maple*



The full extension metal drawer guides in the kitchen assure smooth operation. Now items in the back are just as convenient as those in the front.



*Standard Graphics Package*

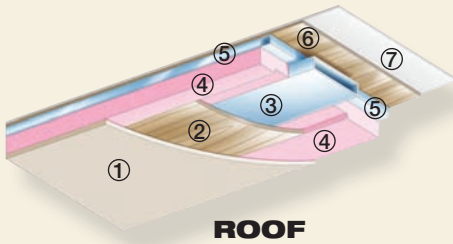


*Mabogany Brown*



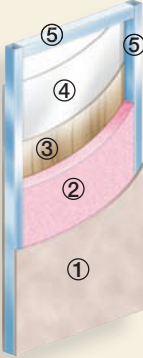
*Molten Lava*

## CONSTRUCTION



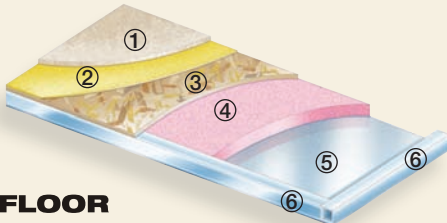
### ROOF

- ① Padded ceiling
- ② Luan (wood)
- ③ Air conditioning duct
- ④ Insulation
- ⑤ Aluminum frame
- ⑥ Luan (wood)
- ⑦ TPO roofing



### SIDEWALLS

- ① Interior panel
- ② 1-1/2" block foam insulation
- ③ Luan backer
- ④ Exterior fiberglass
- ⑤ Aluminum frame (tubing)



### FLOOR

- ① Carpet
- ② Padding
- ③ Structurewood floor
- ④ Insulation
- ⑤ Galvanized metal
- ⑥ Steel frame (tubing)



Just look at the loads of extra basement storage space with the raised rail chassis. Now you can bring everything you need on your journey — and then some.

# AS GOOD AS IT GETS.

Exciting décor environments. Quality construction techniques. Deluxe full-body paint on the Astoria Pacific Edition. And a variety of floor plans that promise a comfortable, well-appointed motorhome lifestyle.

## DÉCOR

Astoria offers a selection of décor packages. Each one is inviting and comfortable. And your selection lends a sense of your own personality to the interior environment.

## PAINT

These clean, contemporary full-body paint packages will create a buzz among your fellow travelers. Stylish and upscale, they are what distinguish the Astoria Pacific Edition from the competition.

## FLOOR PLANS

Beautifully and thoughtfully created, Astoria offers some of the most spacious, most comfortable, most convenient motorhome floor plans you'll ever find. Plus, new in 2008, Astoria has two new floor plans with triple slideouts.

## OUR "GOLDEN THREAD" — "VALUE BY DESIGN."

Damon has a golden thread that weaves its way into everything we do. When we design motorhomes, we always design more standard features and value into them than our competitors. "Value by Design" we call it. Plus, producing only Class A's simplifies our manufacturing process and helps us focus on doing one job exceptionally well. "Value by Design." It's more than a golden thread, more than a slogan. It's our guiding principle, our way of delivering more motorhome and value for less money.



The lush cockpit includes a premium AM/FM radio and in-dash CD player with 4-speaker sound. The Flexsteel driver and passenger 6-way power reclining seats are optional on the regular Astoria and standard on the Pacific Edition. Soft, luxurious Nature's Choice leather adds extra comfort and style.

## Astoria standard specifications and features

### Exterior

- Graphics package
- Fog lights
- Wide-body design
- Radius-cornered domed TPO roof
- Rear ladder
- Front and rear fiberglass caps
- Side-mounted manual patio awning
- Side-mounted awning over slideout
- Upgraded gelcoated sidewall
- Locking aluminum exterior storage doors
- Three side-hinged compartment doors (passenger side)
- Custom-designed front entry door with screen
- Black-framed radius-cornered windows
- Two patio lights (one on each side)
- Lighted storage compartments
- Full basement pass-through storage
- Gas pistons on exterior storage doors

### Chassis

- Freightliner® XC raised-rail chassis
- 340-hp Cummins® ISB
- In-block, 750-watt engine heater
- Leece Neville® 170-amp, 12-volt alternator
- Allison® MH-2500 automatic transmission – 6-speed
- Exhaust brake
- Full air brakes with automatic slack adjusters (front and rear)
- Anti-lock brakes
- Haldex® Purest Air Plus heated air dryer
- Air-ride suspension
- Sachs® shock absorbers (front and rear)
- 22.5" radial tires
- Leveling jacks – fully automatic
- Stainless-steel wheel liners
- Front and rear mud flaps
- Trailer hitch (5,000 lbs.)
- Emergency start circuit
- Under-hood light
- Layer of neoprene vibration dampener
- Dual fuel fills

### Cockpit

- Molded ABS dash
- Electronically controlled dash air conditioning
- Premium AM/FM/CD player (single disc, in-dash)
- 4-speaker sound
- Electronic cruise control
- Padded steering wheel
- TRW tilt/telescoping steering column
- Map lights
- Dash fans
- Air horns
- Tinted one-piece windshield
- Windshield privacy shade
- Power mirrors with heat
- Nature's Choice leather Flexsteel reclining driver/passenger seats
- 3-point, wall-mounted seat belts
- Side storage cabinets above driver and passenger
- Sun visors
- Back-up monitor system with audio
- Drink holders
- Vinyl entryway



Vintage Red

## Living Area

- Décor fabric loveseat
- Décor fabric hide-a-bed (driver side slideout)
- Night shades
- 100% nylon carpeting with stain treatment and padding
- 24" flat screen color TV in cockpit overhead with full-function remote, antenna, booster and jack (3679)
- 27" LCD TV with full-function remote with antenna, booster and jack (3770)
- 32" LCD TV with full-function remote with antenna, booster and jack (3772)
- 42" rear projection TV with full-function remote with antenna, booster and jack (3776)
- Video package (DVD and control center)
- Soft touch padded vinyl ceiling
- Fluorescent lighting (living area only)
- Living room pin-up lights
- Aisle lights

## Kitchen

- Refrigerator: large flush-mounted, double-door
- Refrigerator: raised-panel hardwood front (honey maple or cherry)
- 3-burner range and oven
- Folding range cover
- Mirrored backsplash behind stove
- 1.4 cubic-foot space saver microwave oven
- Sink cover
- Single-lever faucet with sprayer
- Kitchen faucet water filter
- Pantry with slide drawers
- HP laminate countertop with wood edge
- Solid-wood, raised-panel cabinet doors throughout (maple or cherry)
- Vinyl flooring
- Dream Dinette with wood-edged table
- Mini blinds
- Wallpaper border

## Bedroom

- Innerspring mattress
- Bedsprad with throw pillows
- Designer headboard
- Bunk beds (3776)
- 15" LCD color TV (3776)
- Lambrequin window treatments
- Night shades
- Mini blinds (always at bunk beds) (3776)
- Pin-up lights

## Bathroom

- Full-height shower with door
- Skylight in shower

- Power vent
- Foot-flush porcelain toilet with sprayer
- Wallpaper border
- Vinyl flooring

## Utilities

- Carrier® air conditioner: 13,500-BTU ducted center (front) with remote control and timer
- Furnace: 34,000-BTU electronic ignition, floor-ducted
- Water heater: 10-gallon gas/electric with electronic ignition
- Water heater bypass kit
- Generator: 6.0 kW Onan® Quiet Diesel™
- Converter: 80-amp
- Dual 6-volt auxiliary batteries
- Battery disconnect
- 50-amp, 120-volt service
- Exterior GFCI receptacle
- Enclosed heated potable and holding tanks
- Black water tank flush
- Three-way valve for tank/city water fill
- Telephone hookup
- Cable TV/satellite hookup
- Exterior shower

- Carbon monoxide, LP gas and smoke detectors
- Monitor panel with LPG readout

## Astoria Popular Options

- Carrier® air conditioner: 13,500-BTU ducted central (rear)
- Side-mounted manual front door awning
- Black-framed, dual-pane windows
- Full-width stainless-steel stone guard with Damon stencil
- Driver's seat with 6-way power
- Nature's Choice leather hide-a-bed (driver side slideout)
- Day/night shades
- Refrigerator: four-door with icemaker
- Buffet with additional storage and four chairs (two fixed and two folding)
- Fantastic® power vent (kitchen)
- 20" color TV in bedroom
- AM/FM stereo/CD player in bedroom
- Generator: 8.0 kW Onan® Quiet Diesel™
- Washer/dryer prep

## Pacific Edition Upgrade Package Standards\*

- Full-body paint package including color-coordinated slideroom awning(s)
- Color-coordinated awning package including electric patio awning with remote control and manual entry door awning with wind sensor
- Nature's Choice leather reclining driver's and passenger's seat with 6-way power
- Electric sun visors with 2 manual side shades
- Ceramic tile entry
- Hide-a-bed (driver side, décor fabric)
- Home theater package with DVD/CD player, and built-in digital tuner
- Windows in slideout end walls
- Cooktop
- Solid-surface range cover
- Solid-surface countertops (kitchen)
- Ceramic tile flooring in kitchen and bath
- Water heater: 10-gallon gas/electric with electronic ignition XT Technology – 16-gallon equivalent
- Inverter: 1800-watt
- Four 6-volt auxiliary batteries on slide tray
- Black-framed, dual-pane windows
- Side-mounted manual front door awning

Weights and Measures	3679		3770		3772		3776	
		PE		PE		PE		PE
Wheelbase	234	234	248	248	248	248	248	248
Overall length	37' 8"	37' 8"	38' 10"	38' 10"	38' 10"	38' 10"	38' 10"	38' 10"
Overall width	101"	101"	101"	101"	101"	101"	101"	101"
Overall height with AC	12' 7"	12' 7"	12' 7"	12' 7"	12' 7"	12' 7"	12' 7"	12' 7"
Std. weight (approx. lbs.)	22,452	25,564	22,848	24,488	23,275	26,433	22,955	24,268
GVWR	28,000	28,000	28,000	28,000	28,000	28,000	28,000	28,000
GCWR	33,000	33,000	33,000	33,000	33,000	33,000	33,000	33,000
Fresh water (approx. gal.)	95.5	95.5	95.5	95.5	95.5	95.5	95.5	95.5
Grey / black water (approx. gal.)	51/51	51/51	51/51	51/51	51/51	51/51	51/51	51/51
LP (lbs.)	126	126	126	126	126	126	126	126
Sleeping capacity	4	4	4	4	4	4	6	6
Exterior storage capacity (cu. ft.)	150	150	185	185	185	185	185	185
Interior drawers	24	24	16	16	17	17	17	17
Interior drawer capacity (cu. ft.)	24.5	24.5	15.1	15.1	19.5	19.5	13.1	13.1
Fuel capacity (approx. gal.)	100	100	100	100	100	100	100	100

PE = Pacific Edition All Astoria motorhomes built on Freightliner chassis.

\*The Pacific Edition Upgrade Package includes the Upgrade Package Standards in addition to regular Astoria standard equipment.



P.O. Box 2888 • Elkhart, IN 46515  
 Customer Service: 800-860-3812  
 Sales Department: 800-860-5658

[www.DamonRV.com](http://www.DamonRV.com)



DC 8/07 © 2007 Damon Motor Coach Printed in U.S.A.

Due to constant product improvements, the specifications, component parts and standard/optional equipment are subject to change without notice or obligation. Product photography or diagrams may show equipment that is optional. Damon Motor Coach reserves the right to make changes in prices and models and to discontinue models without notice or obligation. Components, parts or chassis may have been manufactured at times other than the model year indicated. All capacities are approximate and dimensions are nominal. All dry weights are based on standard model features and do not include optional features or equipment. Various RV components and features may differ to conform to local codes. Due to EPA environmental restrictions, engine power and torque ratings may change mid-year. Due to color reproduction limitations in printing and photography and normal fluctuations in paint, fabric and décor packages, actual manufactured products may vary from the photographs and images presented in this brochure.