

2007

# ASTORIA

DAMON MOTOR COACH



Pushing the diesel pusher concept to the limit.

Damon's 2007 Astoria offers everything you love about diesels — excellent power, performance and storage for sure, plus limitless luxury and special amenities. And, as always, Astoria offers all of this power, performance and luxury at a price that's exceptionally affordable. In fact, Astoria is competitive with most luxury gas models! That's real value.

And value is what Astoria is all about. Starting with Astoria's new, multi-tasking Dream Dinette. It's a spacious eating area by day; then, when you're ready to retire for the night, it converts to a comfortable bed with one easy lever-flipping action.

Read on to discover more about the incredible Astoria motorhome. Scrutinize the Astoria specifications too, to check out all of its wonderful benefits and features.

## Come discover the diesel that runs on value.

Astoria's cockpit is the best engineered in the business with more comfort and convenience for 2007. Everything you need is at your fingertips. The larger, tinted wraparound, one piece windshield provides a more dramatic, panoramic view of the road. Other amenities like heated, side-mounted power mirrors and reclining driver and passenger seats are designed with you in mind. And a new seven-inch backup monitor system with audio helps make backing up safer and easier.



*Enjoy the ride with an electronic cruise control, AM/FM/CD player with four speaker sound and map lights. Astoria also offers maximum visibility through the panoramic tinted one piece windshield with its own shades.*

Pushing the diesel pusher concept to the limit.



*Indulge yourself with the Astoria 3773 featuring Time Square (Pacific Edition) décor. Distinctive styling, refined comfort features put it in a class all its own.*

Move up to Astoria.



*Convenience surrounds Astoria's spacious kitchen. Pantry drawers provide extra storage, while cooking is made easy on the 3-burner range, in the oven or in the microwave.*

*3773 Pacific*



*Edition, Time Square, Honey Maple.*

Astoria includes distinctive styling and many deluxe “most wanted” features and amenities. And our exclusive Pacific Edition upgrade package also offers a Surroundsound® home theater system for the ultimate in entertaining recreation, plus features like a five-channel Dolby® Pro-Logic receiver-amplifier, DVD player and satellite speakers. The gorgeous Sherwin Williams® full-body exterior paint packages are real head-turners. Color choices include Cherry Sand, Navy Mist and Almond Espresso. Plus, color-matched awnings accentuate the beautiful full-body paint packages. Ultra-leather driver and passenger seats wrap you in comfort and luxury and feature six-way power controls. Electric visors in the cockpit make escaping from the sun fast and easy. Beautiful ceramic tile is featured in the entryway, kitchen and bath areas. And elegant yet rugged Corian® tile enhances the stylish kitchen.

*Indulge yourself in the beautiful, value-loaded bedroom. A rich wood-framed designer headboard and solid wood cabinet doors with a stylish old world feel.*

*Notice the careful attention to the smallest details in the comfortable bathroom: full height shower door, beautiful vinyl flooring and rich, hardwood cabinets and mirror.*



Damon's quality construction also comes with attractive décor packages as well. Astoria's beautiful paint scheme and fabric and wood options will make you feel right at home.

## Décor

Choose from three décor packages and two wood options that are sure to lend a sense of your personality to your Astoria.

## Floor Plans

The variety of floor plans available assure you the roomiest, most comfortable and convenient motorhome experience ever.

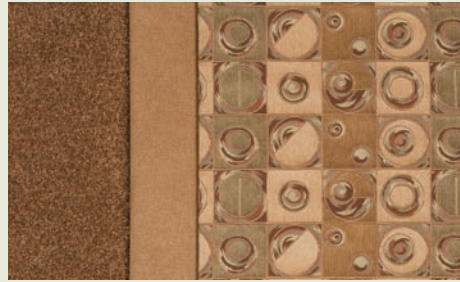
## Paint

Astoria's paint packages will turn heads with their distinctively upscale look that is unmatched by competitive motorhomes.

*Advanced technology is everywhere. The aerodynamic front cap, including the hood, headlights, clearance lights and enormous one piece windshield, give Astoria a clean, sleek look.*



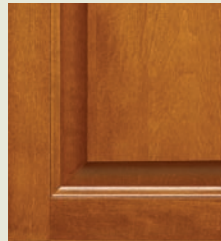
Grand Central



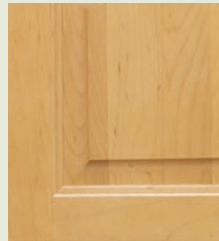
Time Square



Liberty Lane



Cherry

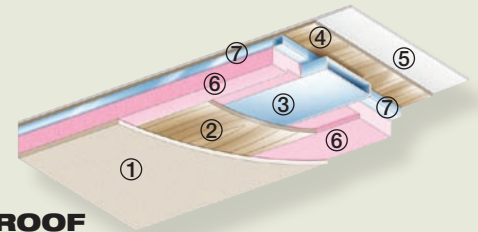


Honey Maple



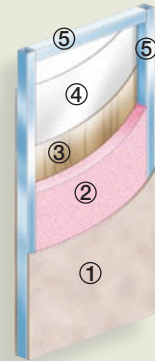
*The full extension metal drawer guides in the kitchen assure smooth operation. Now items in the back are just as convenient as those in the front.*

## Construction



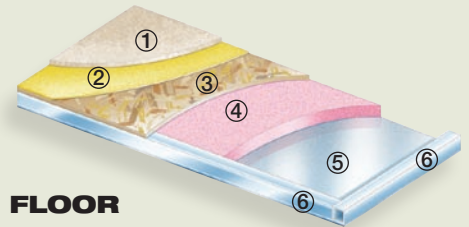
### ROOF

- ① Padded ceiling
- ② Luan (wood)
- ③ Air conditioning duct
- ④ Luan (wood)
- ⑤ TPO roofing
- ⑥ Insulation
- ⑦ Aluminum frame (tubing)



### SIDEWALLS

- ① Interior panel
- ② Insulation
- ③ Sidewall mende board (inside)
- ④ Sidewall mende board (outside)
- ⑤ Aluminum frame (tubing)



### FLOOR

- ① Carpet
- ② Padding
- ③ Structurewood floor
- ④ Insulation
- ⑤ Galvanized metal
- ⑥ Steel frame (tubing)



*The raised rail chassis provides loads of extra basement storage space. Now you can bring everything you need on your journey – and then some.*



Iron Grey Metallic (Standard)



Cherry Sand

## Astoria standard specifications and features

### Living Area

- Euro recliner with leather seating surface and ottoman (passenger side) (3579 only)
- Décor fabric loveseat (3679 & 3773 only)
- Décor fabric sofa bed (passenger side) (3774 only)
- Décor fabric hide-a-bed (driver side slideout) Night shades
- 100% nylon carpeting with stain treatment and padding
- 24" flat screen color TV in cockpit overhead with full-function remote, antenna booster and jack (N/A on 3774)
- 27" LCD TV with full-function remote with antenna, booster and jack (3774 only)
- Soft touch padded vinyl ceiling
- Fluorescent lighting
- Living room pin-up lights
- Aisle lights

### Chassis

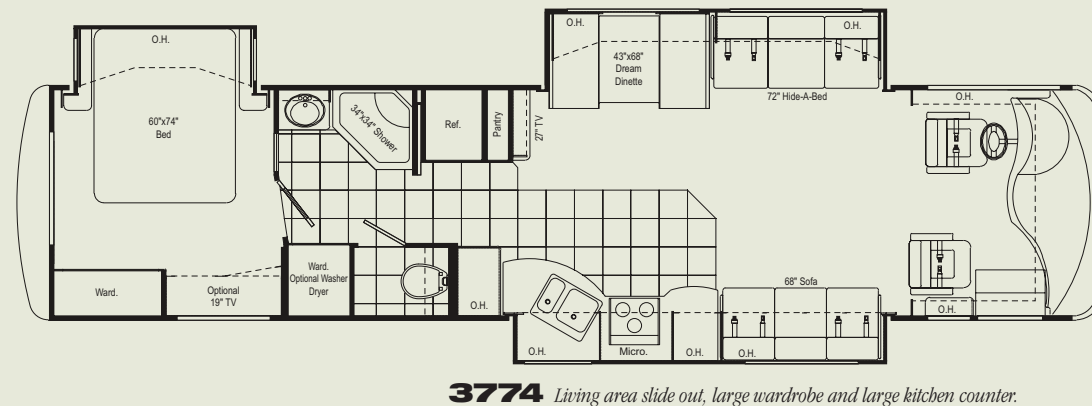
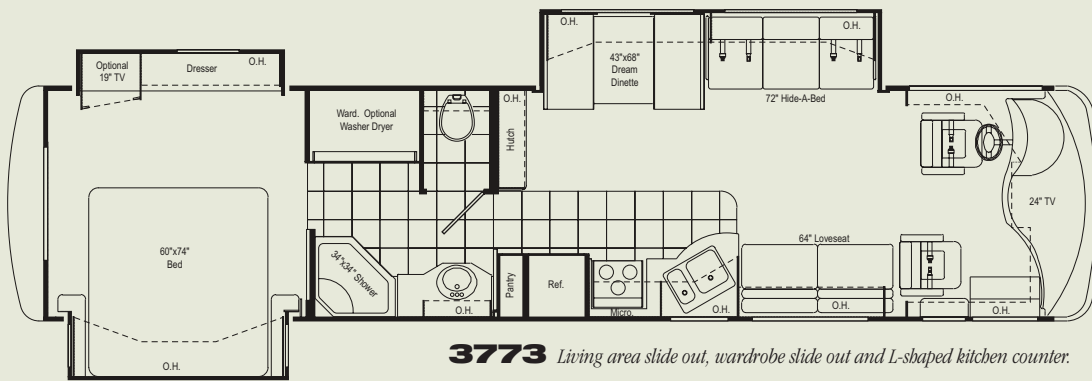
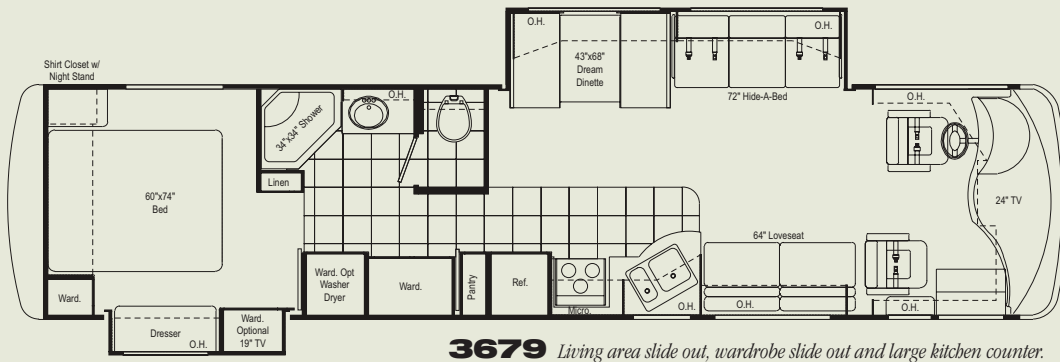
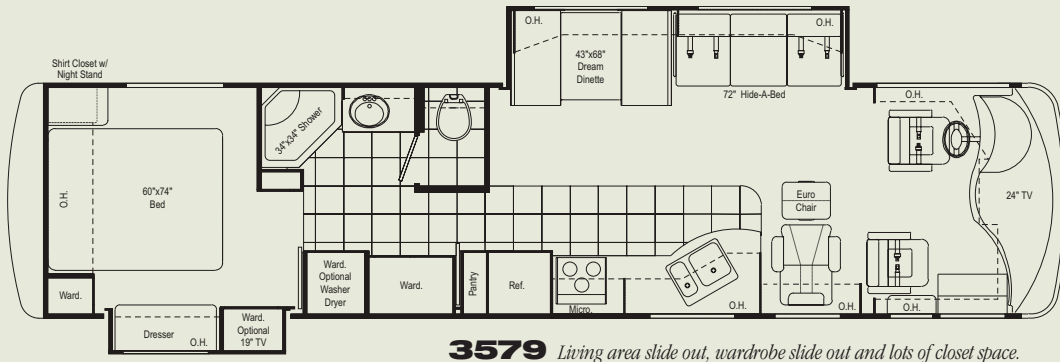
- Raised-rail chassis
- 300-hp Cummins® ISB (low torque)
- In-block engine heater
- Leece Neville® 160-amp, 12-volt alternator
- Allison® MH-2500 automatic transmission – 5-speed
- Exhaust brake
- Full air brakes with automatic slack adjusters (front and rear)
- Anti-lock brakes
- Midland® Pure-Air Plus™ heated air dryer
- Air-ride suspension
- Sachs® shock absorbers (front and rear)
- 22.5" radial tires
- Leveling jacks
- Stainless-steel wheel liners
- Front and rear mud flaps
- Trailer hitch (5,000 lbs.)
- Emergency start circuit
- Under-hood light
- Layer of neoprene vibration dampener
- Dual fuel fills

### Bathroom

- Full-height shower with door
- Skylight in shower
- Power vent
- Foot-flush porcelain toilet with sprayer
- Wallpaper border
- Vinyl tile flooring

### Cockpit

- Molded ABS dash
- Electronically controlled dash air conditioning
- Premium AM/FM/CD player (single disc, in-dash)
- 4-speaker sound
- Electronic cruise control
- Padded steering wheel
- Douglas® tilt/telescoping steering column
- Map lights
- Dash fans
- Air horns
- Tinted windshield
- Windshield privacy shade
- Front-mounted power mirrors with heat
- Nature's Choice leather w/décor cloth insert reclining driver/passenger seats
- 3-point, wall-mounted seat belts
- Side storage cabinets above driver and passenger
- Sun visors



Navy Mist



Almond Espresso

Backup monitor system with audio  
 Drink holders  
 Vinyl tile entryway

**Exterior**

Paint and graphics package  
 Fog lights  
 Wide-body design  
 Radius-cornered domed TPO roof  
 Rear ladder  
 Front and rear fiberglass caps  
 Side-mounted manual patio awning  
 Side-mounted awning over slideout  
 Upgraded galcoated sidewall  
 Locking exterior storage doors  
 Three side-hinged compartment doors (passenger side)  
 Custom-designed front entry door with screen  
 Black-framed radius-cornered windows  
 Two patio lights (one on each side)  
 Lighted storage compartments  
 Full basement pass-through storage  
 Gas pistons on exterior storage doors

**Bedroom**

Innerspring mattress  
 Bedspread with throw pillows  
 Wood-framed designer headboard  
 Lambrequin window treatments  
 Night shades  
 Pin-up lights

**Kitchen**

Refrigerator: large flush-mounted, double-door  
 Refrigerator: raised-panel hardwood front (honey maple or cherry)  
 3-burner range and oven  
 Folding range cover  
 Mirrored backsplash behind stove  
 1.4 cubic-foot space saver microwave oven  
 Sink covers  
 Single-lever faucet with sprayer  
 Kitchen faucet water filter  
 Pantry  
 HP laminate countertop with wood edge  
 Solid-wood, raised-panel cabinet doors throughout (maple or cherry)  
 Vinyl tile flooring  
 Dream Dinette with wood-edged table  
 Mini blinds  
 Wallpaper border

**Pacific Edition Upgrade Package**

Full-body paint package  
 Color-matched awnings (electric-powered main awning)  
 Ultra-leather cockpit seats with 6-way power  
 Home theater system with Surroundsound®  
 10 gallon water heater  
 Electric sun visors  
 Ceramic tile in kitchen and bath  
 Ceramic tile entryway  
 Corian® countertops in kitchen  
 Rear air  
 Space-saver convection microwave  
 Air horns  
 Day/night shades in living area  
 Inverter: 1000 watt  
 Fantastic power vent  
 Full-width stainless steel stone guard  
 Awning over slideout  
 Washer/dryer prep  
 TV in bedroom  
 Dual-pane windows

**Utilities**

Air conditioner: 13,500-BTU ducted center (front)  
 Furnace: 35,000-BTU electronic ignition, floor-ducted

Water heater: 10-gallon gas/electric with electronic ignition  
 Water heater bypass kit  
 Generator: 7.5 kW Generac® Quietpac™  
 Converter: 80-amp  
 Dual 6-volt auxiliary batteries  
 Battery disconnect  
 50-amp, 120-volt service with marine-type detachable power cord  
 Exterior GFCI receptacle  
 Enclosed heated potable and holding tanks  
 Black-water tank flush  
 Three-way valve for tank/city water fill  
 Telephone hookup  
 Cable TV/satellite hookup  
 Pre-wired for roof-mounted satellite dish  
 Exterior shower  
 Carbon monoxide, LP gas and smoke detectors  
 Monitor panel with LPG readout  
 Steel lockbox (located in a wardrobe)

**Popular Options**

Side-mounted manual front door awning  
 Black-framed, dual-pane windows  
 Invisible bra  
 Full-width stainless-steel stone guard with Damon stencil  
 Front-mounted chrome power mirrors with heat

Driver's seat with 6-way power  
 Passenger's seat with 6-way power  
 Nature's Choice leather hide-a-bed (driver side slideout)  
 Day/night shades  
 Video package (VCR/DVD and control center)  
 Refrigerator: four-door with icemaker  
 Cooktop IPO range and oven (convection microwave required)  
 1.1 cubic-foot space saver microwave/convection oven  
 Buffet with additional storage and four chairs (two fixed and two folding)  
 2 folding chairs (buffet only)  
 Fantastic® power vent  
 19" color TV in bedroom  
 AM/FM/CD player in bedroom  
 Air conditioner: 13,500-BTU ducted center (rear)  
 Dual heat pumps with low-profile A/C (n/a with optional A/C)  
 Generator: 7.5 kW Onan® Quiet Diesel™  
 Washer/dryer prep  
 DSS automatic-tracking satellite dish

Astoria Weights and Measures	3579		3679		3773		3774	
		PE		PE		PE		PE
Wheelbase	228	228	228	228	242	242	242	242
Overall length	37'7"	37'7"	37'7"	37'7"	38'9"	38'9"	38'9"	38'9"
Overall width	101"	101"	101"	101"	101"	101"	101"	101"
Overall height with AC	12'7"	12'7"	12'7"	12'7"	12'7"	12'7"	12'7"	12'7"
Std. weight (approx. lbs.)	21,732	22,728	21,933	22,989	23,015	23,704	23,075	24,114
GVWR	26,850	28,000	26,850	28,000	28,000	28,000	28,000	28,000
GCWR	31,850	33,000	31,850	33,000	33,000	33,000	33,000	33,000
Fresh water (approx. gal.)	95.5	95.5	95.5	95.5	95.5	95.5	95.5	95.5
Grey/black water (approx. gal.)	51/51	51/51	51/51	51/51	51/51	51/51	51/51	51/51
LP (lbs.)	126	126	126	126	126	126	126	126
Sleeping capacity	4	4	4	4	4	4	4	4
Exterior storage capacity (cu. ft.)	150	150	150	150	185	185	185	185
Interior drawers	20	22	20	22	19	21	17	19
Interior drawer capacity (cu. ft.)	18.8	21.1	16.4	16.7	12.1	12.4	13.4	13.7
Fuel capacity (approx. gal.)	100	100	100	100	100	100	100	100

PE = Pacific Edition

All Astoria motorhomes built on Freightliner chassis.



Freightliner Custom Chassis  
 THE LEADER AT EVERY TURN



P.O. Box 2888 • Elkhart, IN 46515  
 Customer Service: 800-860-3812  
 Sales Department: 800-860-5658  
 www.DamonRV.com



DC 9/06 © 2006 Damon Motor Coach Printed in U.S.A.

Due to constant product improvements, the specifications, component parts and standard/optional equipment are subject to change without notice or obligation. Product photography or diagrams may show equipment that is optional. Damon Motor Coach reserves the right to make changes in prices and models and to discontinue models without notice or obligation. Components, parts or chassis may have been manufactured at times other than the model year indicated. All capacities are approximate and dimensions are nominal. All dry weights are based on standard model features and do not include optional features or equipment. Various RV components and features may differ to conform to local codes. Due to EPA environmental restrictions, engine power and torque ratings may change mid-year.