

*Show that you've arrived.
Before you even leave the curb.*



2007
REVOLUTION LE
CLASS A DIESEL



Liberty Chassis | One-Piece Windshield | Luxurious Furnishings | Tilting Instrument Panel | Hardwood Cabinetry

Revolution LE 40E shown in Obsidian interior décor with Regency Cherry wood finish.





REVOLUTION LE



*All dressed up with
everywhere to go.*

*M*aking an impressive entrance with premium furnishings and style to burn, the Revolution LE turns other motor homes into six-wheeled wallflowers. Just imagine yourself lounging on the Ultraleather™ furniture near the giant LCD TV, plush carpeting underfoot. With tall 84" ceilings and triple or quadruple slide-outs, there's always room for more at your party. For those lucky enough to be invited, that is.

Even the most impressive vintage would feel at home here.



Enjoy a fine bottle of wine in a galley that's just as tastefully crafted. Constructed from rich solid wood, the cabinetry features raised panel doors and brushed nickel hardware that gleams with high-end style. All the appliances are top-of-the-line, chosen for their sleek design as much as for their dependability. In all, it's a worthy spot to toast your latest adventures.





∴ **THE HOME THEATER SYSTEM** includes a 26" LCD TV, DVD player and a digital satellite dish for crystal clear images.



∴ **THE FREE-STANDING DINETTE** (optional) includes four chairs and an extension leaf. Surrounded by large windows, it's ideal for dinner by sunset.



∴ **THE CORIAN® SINK** is graced with a sparkling Moen® faucet with a pull-out sprayer. Dishwashing was never so posh and easy.



∴ **THE NORCOLD® REFRIGERATOR** provides a water dispenser in the door and 12 cu. feet of space for Chablis and cheese – plus your non-essentials. And the 4-door design provides compartments wide enough for party trays and full-size pizzas.

∴ **CORIAN® COUNTERTOPS** lend designer appeal to the galley while resisting stains and scratches. A small lip on the edge keeps spills off the furniture and floor.

∴ **CERAMIC TILE FLOORING** is set on the diagonal, just like in today's finest homes.



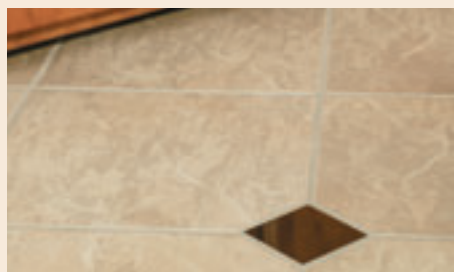
∴ **THE SPACIOUS PANTRY** contains pull-out shelves so it's easy to grab that midnight snack.



∴ **THE FULL-EXTENSION DRAWERS** give you access to the entire drawer, and slide easily. They stay closed in transit thanks to a new heavy-duty locking catch.



∴ **THE GE® CONVECTION MICROWAVE** cooks as beautifully as it looks, and much faster than a traditional microwave.



With a bedroom retreat like this, why save it for after dark?



:: **ABUNDANT STORAGE** includes a cedar-lined wardrobe with drawers and cabinets. See, you can take it with you.



:: **THE WASHER AND DRYER** (optional) is discretely concealed in the bedroom behind rich wood cabinetry.



:: **THE NEO-ANGLED SHOWER** is underneath a skylight that lets the sunshine in. Yet the shower stall is enclosed with obscured glass to maintain your privacy.



:: **THE 20" LCD FLAT PANEL TV** is positioned perfectly for bed time viewing.

Enjoy the star treatment in a grand bath with every amenity. The large mirror and vanity lighting help you look your best, the roomy medicine cabinet stores your supplies, and the Corian® countertops create an elegant setting.



REVOLUTION LE



*I*n a room this beautiful, you may not want to close your eyes.

But once you stretch out on the roomy queen bed with its blissfully comfortable mattress, it will be easy for sleep to steal you away.

Especially after watching Leno or Letterman on the large LCD TV, with a quiet ceiling fan (optional) stirring up a gentle breeze.

Just looking at all that cushiony real estate makes your eyelids droop. A Sleep Number® mattress is also optional. It allows you to customize the firmness on each side of the mattress independently.

Driven to extremes of quality.



Long drives don't have to be hard on your hands. The oversized, padded "Smart Wheel" is soft to the touch, and easy to hold onto for extended periods of time.

*W*e know that the driver holds not only the wheel, but also a tremendous responsibility. So we've expended some serious engineering brainpower to make your job easier. The instrument panel is integrated with the steering column, so it can tilt and telescope to many different positions for maximum visibility and comfort. The pedals adjust to your height, too. The wheel puts valuable controls literally at your fingertips, while the power visors keep the sun out of your eyes. That's better driving through technology.



:: **THE REAR VISION CAMERA** makes backing up easier, because the driver can clearly see behind and hear directions with one-way audio.



:: **THE KEYLESS REMOTE ENTRY** lets you easily lock and unlock your coach with the push of a button. No more fumbling to find the keyhole in the dark.



:: **SIDE MIRRORS** are heated to retain visibility in cold weather, and chrome-plated to make them classy.

The tall one-piece windshield delivers a wide, unobstructed view from the cockpit. After all, isn't the whole point to see the majestic scenery from sea to shining sea? But the view is just as attractive from the outside. This windshield is Revolution's stylish calling card.



:: **THE PASSENGER SEAT** adjusts six ways with power controls until the position is just right – down to the electric footrest. This seat is heated to keep you cozy in transit.

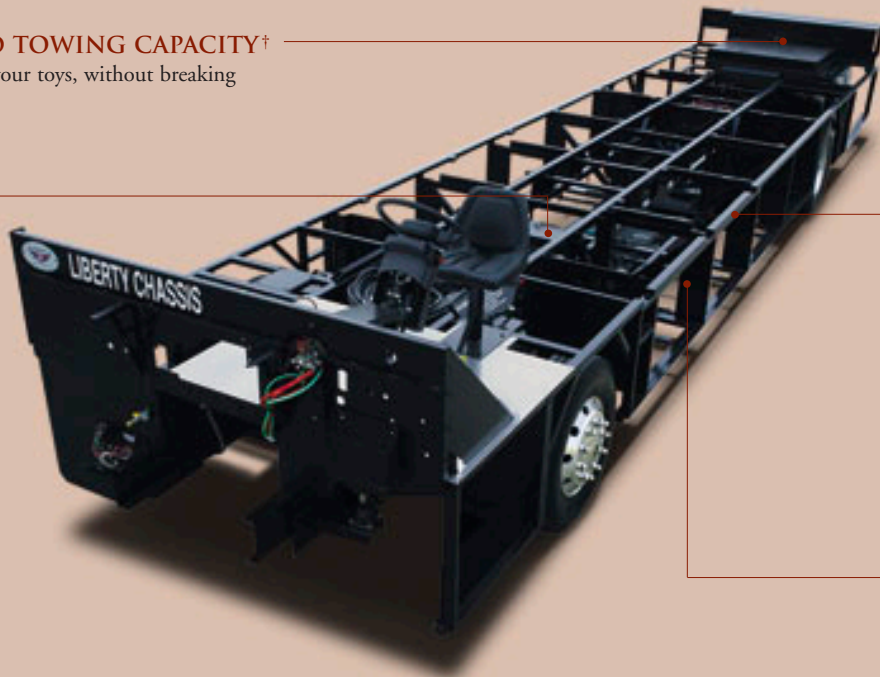
*Thanks to the Liberty Chassis,
the Revolution LE is one smooth operator.*

A 15,000 POUND TOWING CAPACITY†

tows your vehicle, or your toys, without breaking a sweat.

CENTER-MOUNTED FUEL TANK

distributes weight evenly.



ALL-STEEL STRUCTURE

creates a strong and rigid frame that resists flexing. This is the foundation for a superior chassis that can overcome the structural challenges of floor plans with triple and quad slide-outs.

STORAGE COMPARTMENTS

provide durable storage space for a mountain of stuff, and they hose out for easy cleaning.

†The chassis manufacturer recommends the installation of a supplemental brake control system to activate the brakes on the vehicle or trailer you are towing. Hitch receiver ratings expressed are maximum for the hitch receiver installed and may require the purchase of additional equipment that is dependent on the weight of the towed load. Consult with hitch receiver manufacturer for further information.

DUAL PANE WINDOWS

provide insulation from outdoor noise and temperatures. And, they work in tandem with the Energy Management System to maintain comfort and save energy.

IN-MOTION TRACVISION® SATELLITE SYSTEM

(optional) allows you to listen to satellite radio stations while traveling. And when you stop, your favorite TV station is available right away.

SIDE-HINGED LUGGAGE DOORS

(select doors) open sideways and lock into place so they won't swing shut when you're loading up.



7.5 KW DIESEL GENERATOR

by Onan® runs quietly to keep the peaceful atmosphere when boondocking.

Vehicle shown in Onyx with Edge graphics.



REVOLUTION LE

Our exclusive Liberty Chassis makes the Revolution LE arguably the best riding diesel coach on the market. In fact, we placed a nickel on one of the frame rails while the engine was running – and the nickel did not move. That's how little vibration was created. The secret is the strong, rigid frame that strengthens the integrity of the driving platform and creates an extremely smooth driving experience. We designed it, and we're still impressed.



:: **THE DIESEL ENGINE** is a 400-horsepower Cat® C9 diesel with an Allison® 3000 MH transmission. That's some big muscle.



:: **THE PASS-THROUGH STORAGE** holds skis, kayak paddles and other long items, and an optional slide-out tray makes them easy to retrieve.



:: **THE EXTERIOR ENTERTAINMENT CENTER** (optional) lets you enjoy fresh air and your favorite shows. Includes a 20" TV on a swivel tray, AM/FM radio with CD player.



:: **THE SERVICE CENTER** gives you one central place to check and maintain your coach systems. Easy access to fuel filters, air dryer, injector primer pump, water fuel separator and your leveling system.

AIR CONDITIONERS are mounted on the roof to free up basement storage space and keep you comfortable year-round.

FIBERGLASS ROOF is one solid piece for leak-free living, with a contemporary dome shape and sleek radius corners.

DUPONT® PAINT is meticulously applied in two stages for the finest appearance and durability. A final clear coat seals and protects the graphics to keep the colors true.

WINDOW AWNINGS protect and shade the bedroom and front roadside windows.

REAR CAP features high-mounted taillights for better visibility, and a two-piece ladder that stows away when not in use.



No matter which of these 22 you pick, it's sure to draw attention.

New Aero Graphics

Standard Graphics



DESERT
SAND



New Color
BLACK GOLD



New Color
MIDNIGHT BLUE



COPPER
SUNSET



New Color
RED WINE



New Color
WHITE SHADOW



ONYX



ONYX



PEARL



PEARL

In a good way.



REVOLUTION LE

Speedline Graphics



DESERT SAND

Edge Graphics



DESERT SAND

Retro Graphics



DESERT SAND



COPPER SUNSET



COPPER SUNSET



COPPER SUNSET



ONYX



ONYX



ONYX



PEARL



PEARL



PEARL

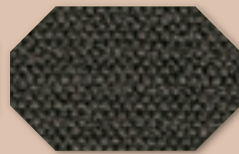
The hard part is choosing your favorite interior.

Obsidian

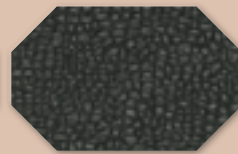
Living/Dining Room



Ultraleather™ Sofa & Sofa Bed



Dinette Cushions
& Throw Pillows

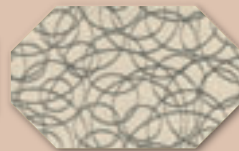


Throw Pillows

Bedroom



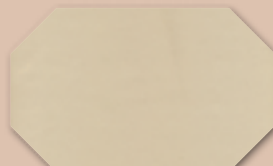
Bedspread & Pillow Shams



Throw Pillows

Tiger Eye

Living/Dining Room



Ultraleather™ Sofa & Sofa Bed

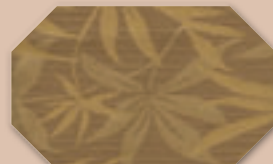


Dinette Cushions
& Throw Pillows



Throw Pillows

Bedroom



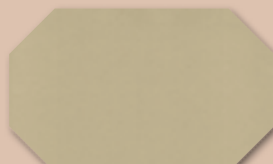
Bedspread & Pillow Shams



Throw Pillows

Laupe

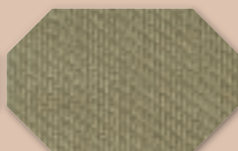
Living/Dining Room



Ultraleather™ Sofa & Sofa Bed

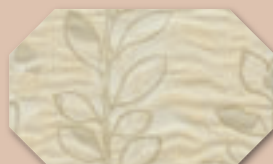


Dinette Cushions
& Throw Pillows



Throw Pillows

Bedroom



Bedspread & Pillow Shams



Throw Pillows



Why Fleetwood?



Passion

We're truly passionate about the RV lifestyle. Fleetwood was founded by RV enthusiasts, and that tradition continues today.



Warranty

Breathe easier with RV Ownercare, one of the best warranties in the industry. See your Fleetwood dealer for details.



Quality

There's no cutting corners. Skilled craftsmen build every Fleetwood RV for maximum durability and longevity.



Trust

More people trust Fleetwood. After all, we've spent over 50 years perfecting RVs, earning the loyalty of generations of RVers.



Service

Help is nearby. When you need an upgrade or repair, you'll find facilities all across North America and more than 1,100 dealers ready to assist you.

Interior Wood Finishes

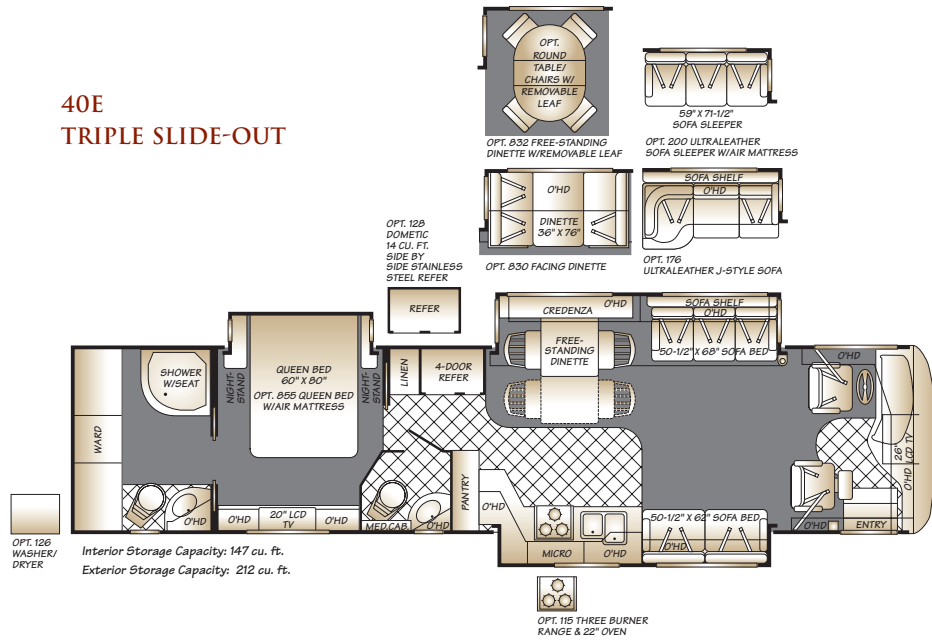


Mix And Match Décor.

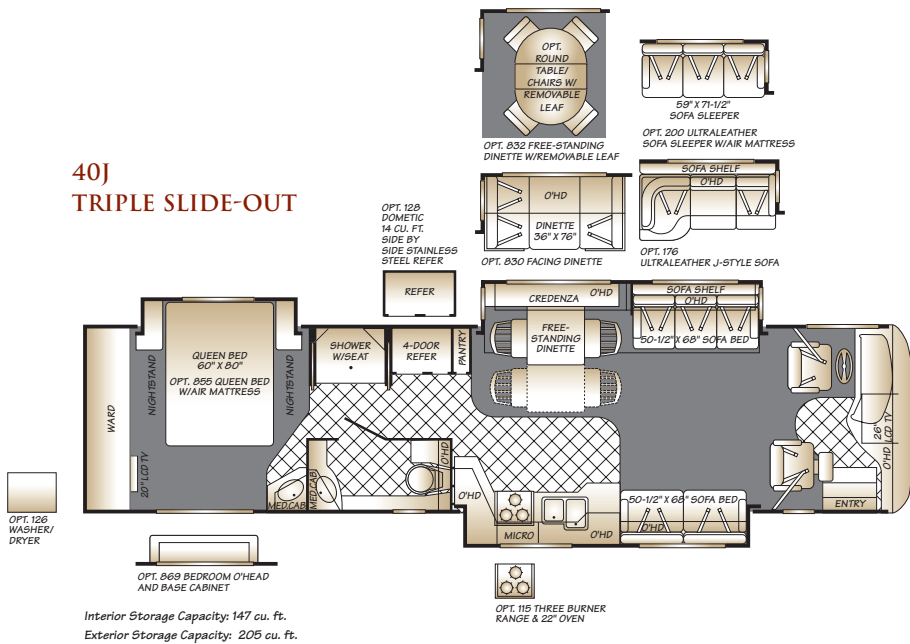
We've carefully selected the most dramatically beautiful décor choices. Now, just pick the interior motif, the wood finish and the exterior graphics you like best. Each fabric is not only durable, but feels pleasurable to touch. For example, the Ultraleather™ fabric looks like premium leather, but it's softer and also easier to clean. Ultraleather covers the Flexsteel® furniture, which has a lifetime warranty on the frame. In the Revolution LE, comfort, durability and luxury can go hand in hand.

Floor Plans

40E TRIPLE SLIDE-OUT



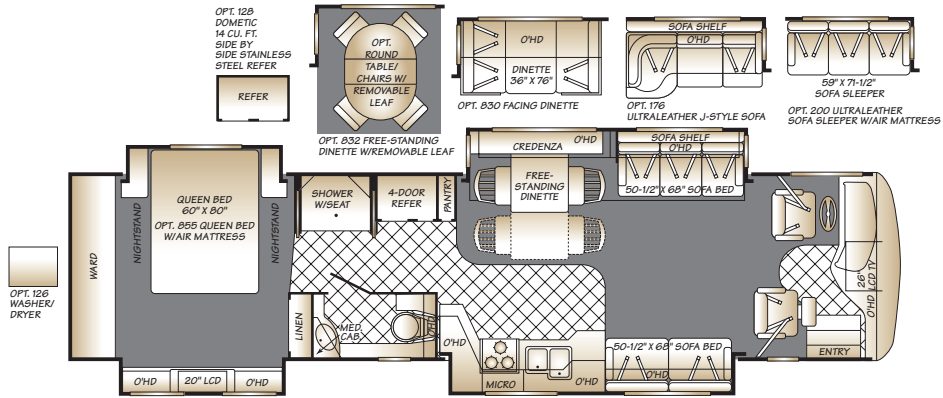
40J TRIPLE SLIDE-OUT



Seat belt configuration may vary based on options chosen.



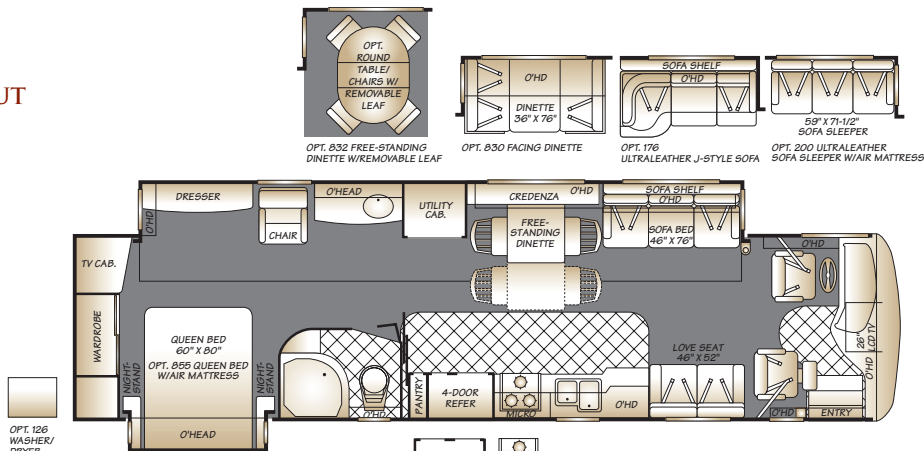
40L QUAD SLIDE-OUT



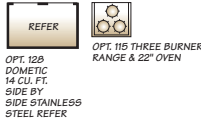
Interior Storage Capacity: 161 cu. ft.
Exterior Storage Capacity: 205 cu. ft.



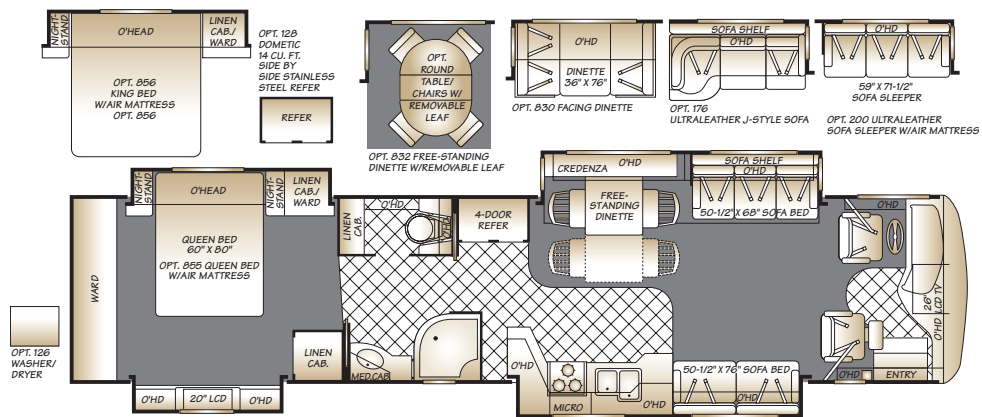
40V DOUBLE SLIDE-OUT



Interior Storage Capacity: 165 cu. ft.
Exterior Storage Capacity: 205 cu. ft.



42N QUAD SLIDE-OUT



Interior Storage Capacity: 209 cu. ft.
Exterior Storage Capacity: 212 cu. ft.



Standard Features and Options

INTERIOR

THROUGHOUT

- 12V Fluorescent Ceiling Lighting S
- 25,000/34,000 BTU Dual Furnaces S
- **84" Interior Ceiling Height** S
- Choice of Windsor Birch, Regency Cherry, or Summit Ash Cabinetry S
- Day/Night Pleated Shades S
- **Deluxe Roller Bearing, Full Extension Drawer Guides & Transit-Ship Locks** S
- Direct Spark Ignition 10 Gallon Water Heater 120V/Propane S
- **Dual Roof Mounted A/C High Efficiency w/Solar Panel & Chill Grille on Front A/C** S
- **Fabrica® Carpeting** S
- Hardwood Cabinet Doors/Drawers S
- Padded Vinyl Ceiling S
- **Power Vent w/Rain Sensors (All Vents, Galley, Bath & Shower Area)** S
- Raised Panel Upper Cabinet Doors S
- Solid Wood Drawers S
- **Centralized Control Panel Display Center at Entry** S
- Tank Level Monitor (Interior Only) S
- Tile Floor at Front Entry S
- **Whole Coach Water Filtration System** S
- Wood-Finish Return Air Intake for Furnace S
- Automatic Generator Start System O
- Central Vacuum System w/Accessory Kit O
- Flexsteel® Ultraleather™ J-Style Sofa O
- Ultraleather™ Sofa Sleeper w/Air Mattress O
- Vented Washer/Dryer Unit O
- Water Heater-16 Gallon Output O

DRIVER CONVENIENCE

- (2) Auxiliary 12V Dash Receptacles S
- Power Driver/Passenger Sun Visors S
- **Adjustable Brake & Throttle Pedals** S
- Automatic Generator Start Switch S
- Auxiliary Fog Lights S
- Auxiliary Start Switch S
- Battery Disconnect Switches S
- CB Radio Ready S
- **Denso® Climate Control System** S
- Driver Side Manual Pull Down Shade S
- Driver/Front Passenger Map Lights S
- **Flexsteel® Ultraleather™ Driver/Front Passenger Seats w/Manual Lumbar(Driver seat only) /6-Way Power/Heat/Adjustable Arm Rest** S
- Flexsteel® Ultraleather™ Passenger Wider Seat/6-Way Power/Electric Footrest S
- I.C.C. Light Switch S
- Manual Air Dump Override Switch S
- Pneumatic Step Well Cover w/Lighted Stepwell Area S
- **Rear Vision System w/One-Way Audio (Camera & Monitor)** S
- **Soft Touch Smart Wheel** S
- **Tilt & Telescoping Steering Wheel w/Adjustable Dash Gauge Package** S
- Visteon® AM/FM Radio & Single CD Player S
- GPS Navigation System w/Sony® Color Back-up Monitor O
- Rear Vision System with Side Cameras O
- Spotlight w/Remote O
- **Visteon® AM/FM CD-6 Radio In Dash w/Sirius® Satellite Radio (Includes 6-Month Subscription)** O

LIVING ROOM

- **26" LCD TV in Front Overhead** S
- **Flexsteel® Ultraleather™ Love Seat** S
- **Flexsteel® Ultraleather™ Sofa Bed** S
- **Home Theater System w/DVD Player** S
- **TracVision® Domed Digital Satellite System** S

GALLEY

- 120V Outlet & Telephone Jack at Dinette S
- **Base Cabinet Storage for the Range & Galley Sink Covers** S

- Ceramic Tile Backsplash S
- Ceramic Tile Flooring w/Accent (Laid Diagonally) S
- **GE® Convection Microwave Oven w/Built In Range Hood** S
- Hardwood Dinette Table, 2 Flexsteel® Chairs & 2 Folding Chairs S
- **High Rise Galley Faucet w/Pullout Sprayer** S
- **Large 70/30 Split Solid Surface Sink** S
- **Norcold® 12 cu. ft. 4 Door Stainless Steel Refrigerator w/Ice Maker and Water Dispenser** S
- Recessed 3 Sealed Burners Cook Top (Black Acrylic Finish) S
- **Satin Polished Solid Surface Galley Countertop** S
- **Satin Polished Solid Surface Range & Sink Covers** S
- Dometic® Side-by-Side Stainless Steel Refrigerator O
- Facing Dinette O
- Freestanding Table w/Chairs O
- Recessed 3 Sealed Burner Range w/Oven & Solid Surface Covers O

BEDROOM

- 20" LCD TV S
- **60" x 80" Full Queen Bed Mattress** S
- **Cedar Lined Wardrobe** S
- Day/Night Pleated Shades S
- DSS 2nd Receiver Ready-Bedroom Area (Coax Cable) S
- Satin Polished Solid Surface Nightstand and Base Cabinet Countertops S
- 72" X 80" Full King Bed Mattress (42N) O
- Bedroom Base Cabinet & Overhead (40J) O
- Bedroom Ceiling Fan O
- Restonic® Rest-On-Air Dual Control Mattress O

BATHROOM

- Ceramic Tile Flooring S
- Deluxe Medicine Cabinet S
- Flip Down Shower Seat (40E) S
- **Moen® Hand Held Shower Head** S
- Molded Shower Seat (40J & 40L) S
- **Residential China Bowl Flush Toilet w/Hand Sprayer (40E-Front Toilet Only, 40J, 40L, & 42N)** S
- **Satin Polished Solid Surface Lavy Top w/Porcelain Bowl & Moen® Faucet** S
- Shower Door w/Obscure Glass S
- Skylight in Shower S
- **Vacuum Flushed Toilet (40E Rear Bath only)** S

SAFETY/CONVENIENCE

- Carbon Monoxide Detector/Alarm S
- Centralized Control Panel Display Center S
- Fire Extinguisher S
- Propane Detector/Alarm S
- Smoke Detector/Alarm S

EXTERIOR

THROUGHOUT

- (4) Aluminum Wheels S
- (4) Mud Flaps S
- 2000 Watt Inverter w/Remote S
- 50 Amp Power Cord S
- Auxiliary Fog Lamps S
- Battery Monitor S
- **Bus Style Large One-Piece Windshield** S
- Chrome "Bus Style" Heated Mirrors w/Remote Adjustment & Turn Signal Indicators S
- **Domed One-Piece Fiberglass Roof w/Radius Corners** S
- Dual Holding Tank San-T-Flush™ System S
- **Dual Pane Windows w/Screens** S
- Electric Patio Awning S
- Electronic Battery Control Center S
- **Energy Management System (50 Amp)** S
- Exterior Convenience Light at Dump Valves S
- Fiberglass Front/Rear Caps w/High-Mounted Taillights S
- Front Entry Door Awning S
- Large Windshield Washer Bottle w/Sprayer Nozzles S

- Multi-Point Water Pump Switching S
- **Onan® 7.5kW Quiet Diesel Generator** S
- Protective Front Vinyl Cover Without Logo S
- Sound Insulation-Front & Rear S
- Top Mounted Intermittent Wipers S
- Utility Light-Front & Rear S
- Variable Speed Aquatec Water Pump S
- **Window Awnings (Bedroom & Front Roadside Windows)** S
- (16) Exterior Graphics Packages (Electric Awning Included in Graphic Package) O
- A Tray Package (2) 90" O
- B Tray Package (2) 54", (2) 36" O
- C Tray Package (1) 90", (1) 54", (1) 36" O
- D Tray Package (1) 54" & (1) 36" O
- Dual Roof Mounted A/C High Efficiency w/Heat Pump and Front Solar Panel (N/A 42N) O
- Exterior Entertainment Center (20" TV w/Swivel Slide-Out Tray) O
- In-Motion TracVision® Domed Digital Satellite System O
- Rear Rock Guard w/Logo O

AUTOMOTIVE

- (2) 12V Chassis Batteries (1000 Cold Cranking Amps Each Battery) S
- (3) Roof Mounted A/C High Efficiency w/Front Solar Panel (42N) S
- **(4) 12-Volt House Maintenance Free AGM Batteries (Group 27)** S
- **15,000 lb Weight-Distributing Hitch Receiver w/7-Point Electrical Hook-up†** S
- 160 Amp Alternator S
- **4-Point Automatic Leveling Jacks** S
- **Allison® 3000 MH, 6-Speed Automatic Transmission** S
- Anti-Lock Brake System (ABS) S
- Full Air Brakes w/Automatic Slack Adjusters S
- I-Beam Suspension w/Bilstein® Shocks S
- Side Radiator Configuration S
- Spartan® Modular Chassis w/400 HP Cat® C9 Engine S
- Tire Pressure Check Gauge S

BODY STRUCTURE

- **Aluminum Interlocking Floor/Wall/Ceiling Framing** S
- **Heated Water & Holding Tank Compartments** S
- **Liberty Chassis** S
- Steel Surface on Front Bulkhead/Engine Frame S
- Vacu-bond® Insulated Storage Area S
- **Vacu-bond® Sidewall, Roof & Floor Construction** S

SAFETY/CONVENIENCE

- (4) Turn Signal Lamps on Each Side of Coach S
- 30" Front Entry Door w/Dead Bolt S
- Front & Rear Docking Lights S
- Illuminated Entry Assist Handle S
- Porch Lights (2) S
- **Power Entry Step w/Last Out Feature** S

STORAGE

- Exterior Flip-Up Compartment Doors S
- **Exterior Side Hinged Storage Doors (on Select Doors)** S
- Lighted Luggage Compartments S

FLEETWOOD ADVANTAGES

- **84" Interior Ceiling Height** S
- **Complete TuffPEX® Plumbing System** S
- **Energy Management System (EMS) w/Soft Start** S
- **Liberty Chassis w/Patent Pending (Fleetwood Exclusive)** S
- **Vacu-Bond® Upper/Lower Floors** S

Bold Denotes Fleetwood's Key Features.

S = Standard O = Optional

Weights & Measurements

SPARTAN® CHASSIS

MODELS	40E	40J	40L	40V	42N
Engine Displacement (Liters)	8.8	8.8	8.8	8.8	8.8
Wheelbase (Inches)	278	266	266	266	302
GVWR (lbs) ¹	34,600	34,600	34,600	34,600	44,600
Front GAWR (lbs) ²	14,600	14,600	14,600	14,600	14,600
Rear GAWR (lbs) ²	20,000	20,000	20,000	20,000	20,000
Tag Axle (lbs) ²	N/A	N/A	N/A	N/A	10,000
Base Weight (lbs) ³	28,200	27,500	28,000	28,100	32,000
GCWR (lbs) ⁴	49,600	49,600	49,600	49,600	59,600
Hitch Rating Weight (lbs) [†]	15,000	15,000	15,000	15,000	15,000
Tongue Weight (lbs) [†]	1,500	1,500	1,500	1,500	1,500
Fuel Capacity (gal)	125	125	125	125	125

DIMENSIONS & CAPACITIES

MODELS	40E	40J	40L	40V	42N
Overall Length ⁵	40' 11.5"	39' 11.5"	39' 11.5"	39' 11.5"	42' 11.5"
Overall Height (with A/C)	12' 10"	12' 10"	12' 10"	12' 10"	12' 10"
Overall Width (maximum) ^{6,7}	101"	101"	101"	101"	101"
Interior Height (maximum)	84"	84"	84"	84"	84"
Interior Width (maximum)	96"	96"	96"	96"	96"
Fresh Water Holding Tank (gal)	95	95	95	95	120
Grey Water Holding Tank (gal)	60	60	60	60	60
Black Water Holding Tank (gal)	40	40	40	40	40
Appliance Propane Tank (gal) (WC) ⁸	38	38	38	38	38
Water Heater Tank (gal)	10	10	10	10	10

Liquid Weight Reference: Water (gal) = (8.3 lbs/3.8 kgs). Fuel (gal) = (7.1 lbs/3.2 kgs) Propane (gal) = (4.2 lbs/1.9 kgs).

Metric Conversion: Multiply pounds x 0.453 to obtain kilograms. Multiply gallons x 3.785 to obtain liters. Multiply liters x 61 to obtain cubic inches.

CHASSIS

Model: Spartan® Chassis	Transmission: Allison® 3000 MH, 6-Speed w/Electronic Shifter
Engine: Cat® C9 w/ 400 HP	Alternator Amps: 160 Amp Leece Neville
Torque: 1150 lb-ft @ 1400 RPM	Tires: Goodyear® 295/70R 22.5H

- GVWR (Gross Vehicle Weight Rating) is the maximum permissible weight of this fully loaded motor home. The GVWR is equal to or greater than the sum of the unloaded vehicle weight (UVW)* plus the cargo carrying capacity (CCC)*.
- GAWR (Gross Axle Weight Rating) is the maximum permissible loaded weight a specific axle is designed to carry.
- Base Weight is the estimated weight of the motor home without fuel, options, water, cargo or passengers.
- GCWR (Gross Combined Weight Rating) is the value specified by the motor home manufacturer as the maximum allowable loaded weight of this motor home with its towed vehicle. Towing and braking capacities may be different. Refer to Fleetwood and chassis manufacturer's manuals for complete information.
- Length taken from front bumper to rear bumper (excludes accessories).
- Excludes safety equipment and awnings.
- Motor homes feature a body-width over 96" which will restrict your access to certain roads. Before purchasing, you should research any state and/or province road laws which may affect your usage.
- Tank manufacturer's listed water capacity (WC). Actual propane capacity is 80% of water listing as required by the safety code.

† The chassis manufacturer recommends the installation of a supplemental brake control system to activate the brakes on the vehicle or trailer you are towing. Hitch receiver ratings expressed are maximum for the hitch receiver installed and may require the purchase of additional equipment that is dependent on the weight of the towed load. Consult with hitch receiver manufacturer for further information, available at time of printing.

*UVW and CCC are found on the cargo carrying capacity label in each RV.

IMPORTANT— PLEASE READ: Product information, photography and illustrations included in this publication were as accurate as possible at the time of printing. For further product information and changes, please visit our website at www.fleetwoodrv.com or contact your local Fleetwood dealer. Prices, materials, design and specifications are subject to change without notice. All weights, fuel, liquid capacities and dimensions are approximate. Fleetwood has designed its recreational vehicles to provide a variety of uses for its customers. Each vehicle features optimal seating, sleeping, storage and fluid capacities. The user is responsible for selecting the proper combination of loads (i.e. occupants, equipment, fluids, cargo, etc.) to ensure that the vehicle's capacities are not exceeded.

REVOLUTION LE

RV OWNERCARE* is a limited one-year/15,000-mile coach warranty and three-year/50,000-mile structural warranty, whichever occurs first, and it is fully transferable for the first 12 months. RV OWNERCARE is one of the RV industry's most comprehensive programs and includes systems, appliances, components and construction, with no deductible and no service charge. RV OWNERCARE coverage is provided from a company that will be around in the future to service your needs. See your nearest Fleetwood dealer for a full explanation of benefits and restrictions.

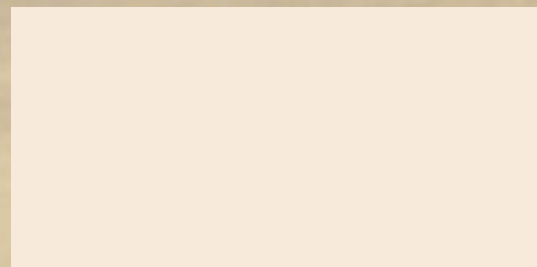
CONTACT US

To locate a dealer near you, visit our website at www.fleetwoodrv.com or call 1-800-444-4905. We can also be contacted at Fleetwood Customer Relations, P.O. Box 1007, Decatur, IN 46733.

FLEETWOOD TRAVELCADE CLUB

As a Fleetwood owner, you're eligible to become a member of the Fleetwood Travelcade Club. It's a perfect way to meet other Fleetwood owners who love to travel across America and share in the RV lifestyle. Call (877) 577-2560, or visit our website at www.fleetwoodrv.com/owners_clubs to learn more, and join the fun.

YOUR LOCAL FLEETWOOD DEALER IS:



*For complete info see your Fleetwood dealer.

©2006. Fleetwood Enterprises, Inc.
Printed in the USA. Inventory Control Number REVLE07B2, 11/06.
Model Year 2007, Second Edition.

IMPORTANT—PLEASE READ

Product information, photography and illustrations included in this publication were as accurate as possible at the time of printing. For further product information and changes, please visit our website at www.fleetwoodrv.com or contact your local Fleetwood dealer. Prices, materials, design and specifications are subject to change without notice. All weights, fuel, liquid capacities and dimensions are approximate. Fleetwood has designed its recreational vehicles to provide a variety of uses for customers. Each vehicle features optimal seating, sleeping, storage and fluid capacities. The user is responsible for selecting the proper combination of loads (i.e. occupants, equipment, fluids, cargo, etc.) to ensure that the vehicle's capacities are not exceeded.



treadlightly![®]

LEAVING A GOOD IMPRESSION



FLEETWOOD
Driven to Explore