

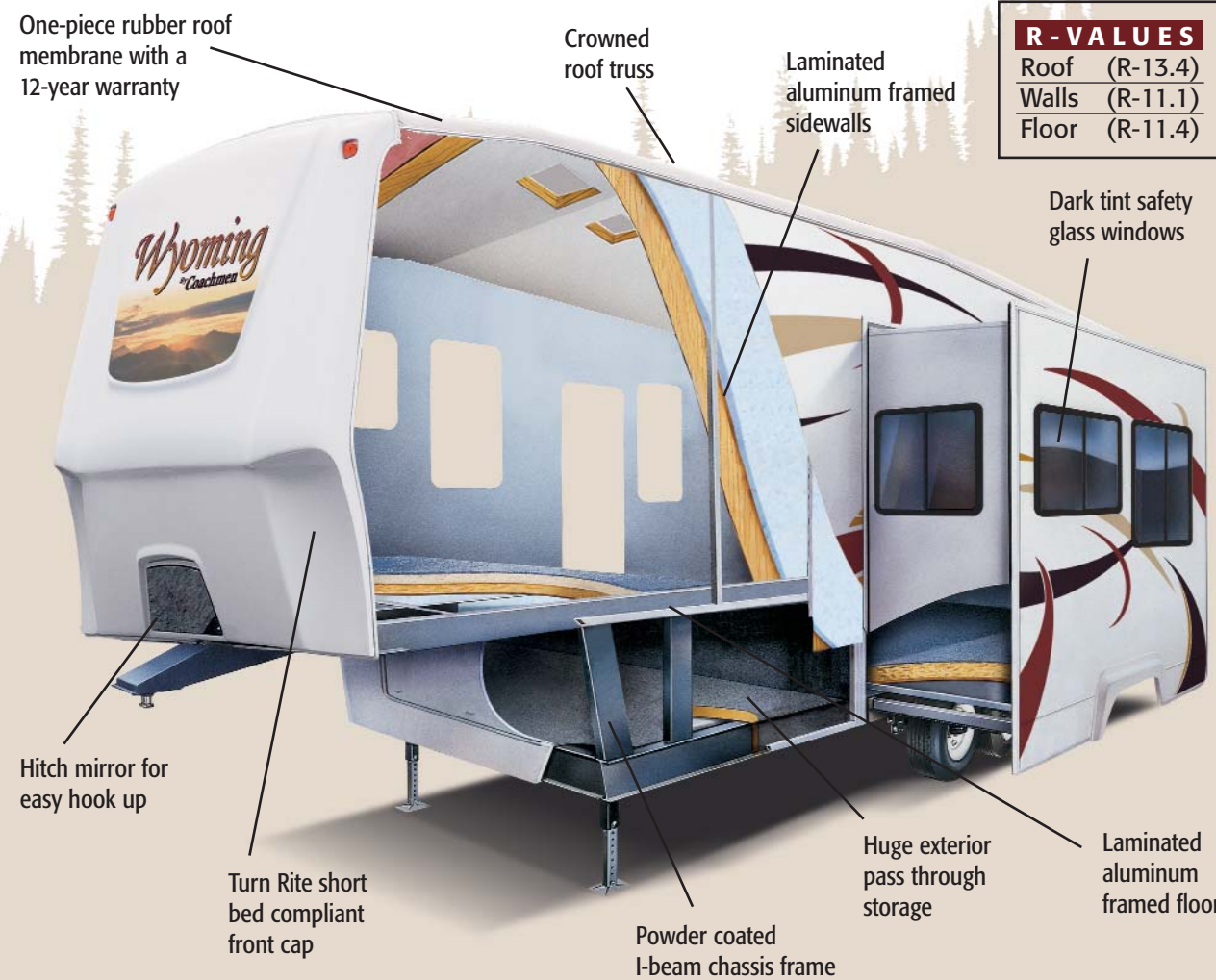
# Wyoming

FIFTH WHEELS BY COACHMEN



The custom front cap is designed for long or short bed trucks. Recessed corners allow for a turning radius up to 90 degrees in either direction.

## CONSTRUCTION FEATURES



R-VALUES	
Roof	(R-13.4)
Walls	(R-11.1)
Floor	(R-11.4)



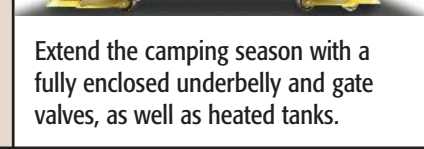
A cap mounted mirror gives you a solid view of the hitch from inside your truck for a confident hookup.



Exterior storage on the Wyoming is huge with up to 92 cubic feet of pass through exterior storage.



The large fold out grab handle provides a sturdy handhold when entering and exiting the unit.



Extend the camping season with a fully enclosed underbelly and gate valves, as well as heated tanks.

## POPULAR FEATURES

- INTERIOR AND DÉCOR**
  - Legacy Glazed Birch Cabinetry
  - Leaded Glass Style Cabinet Door Inserts (Select Areas)
  - Base Cabinets w/Toe-kick
  - Techwood Drawer Sides
  - Oil Rubbed Bronze Hardware
  - Designer Countertops
  - Linoleum Flooring (Kitchen and Bath)
  - Carpet w/Pad (Living and Bedroom)
  - Flush Floor Bed/Bath Deck
  - Designer Window Treatments
  - Mini Blinds Window Covering
  - Slideroom Overhead Cabinet
  - Extra Long 80" Hide-a-Bed Sofa
  - Two Swivel Rockers (Except 342 BHTS)
  - Jumbo Booth Dinette w/Pedestal Table (42" x 72")
  - Double Bowl Sink w/Sink Covers
  - Hi-Rise Kitchen Faucet
  - Extra Large Kitchen Pantry Design
  - Galley Area Waste Basket
  - Residential Style Entertainment Center
  - Laundry Chute w/Basket
  - Bedroom TV Cabinet
- SLEEPING**
  - Residential Queen Bed (60" x 80")
  - Deluxe Innerspring Mattress
  - Decorative Headboard
  - Designer Bedspread
  - Bedlift Storage System (Master Bed)
  - Dual Nightstands w/Power Outlets (Standard w/Queen Bed)
  - Residential Styled Dresser
  - Padded Window Bench Seat
- HEATING AND AIR CONDITIONING**
  - Patio Light
  - Hitch Light
  - Sureline™ Electrical Harness
  - Ceiling Fan
  - Power Bath Vent
  - Wire and Prep for Bedroom AC
  - Even Cool™ Insulated A/C Ducting
  - 40,000 BTU E.I. Furnace
- PLUMBING AND LP SYSTEMS**
  - Porcelain Toilet w/ Foot Pedal
  - His and Hers Dual Bath Lavs
  - Marbled Shower Surround
  - Gravity and City Water Hookups
  - Fresh Water Capacity - 60 Gal.
  - Grey Water Tank - 80 Gal.
  - Waste Water Tank - 40 Gal.
  - Double 30 LB LP Bottles w/Auto Change-over
  - Duratube™ Copper LP Lines
  - Monitor Panel
  - Water Heater By-Pass Valve
  - Demand Water Pump
  - Enclosed Heated Tanks and Valves
  - 10 Gal. Gas/Electric Hot Water Heater
  - Waste Tank Flush
- APPLIANCES AND ACCESSORIES**
  - 3-Burner High Output Range w/21" Oven
  - Double Door Refrigerator
  - Pre-Wired for Bedroom AC
  - Pre-Wired for Satellite Dish
  - Lighted Power Range Hood
- ELECTRICAL AND LIGHTING**
  - Optic Lens Lighting
  - 55 Amp Electronic Converter
  - 50 Amp Service
  - Fluorescent Light in Galley Area
  - GFI Circuit
  - Outside Receptacle GFI
  - End Table (Except 342 BHTS)

## OPTIONS

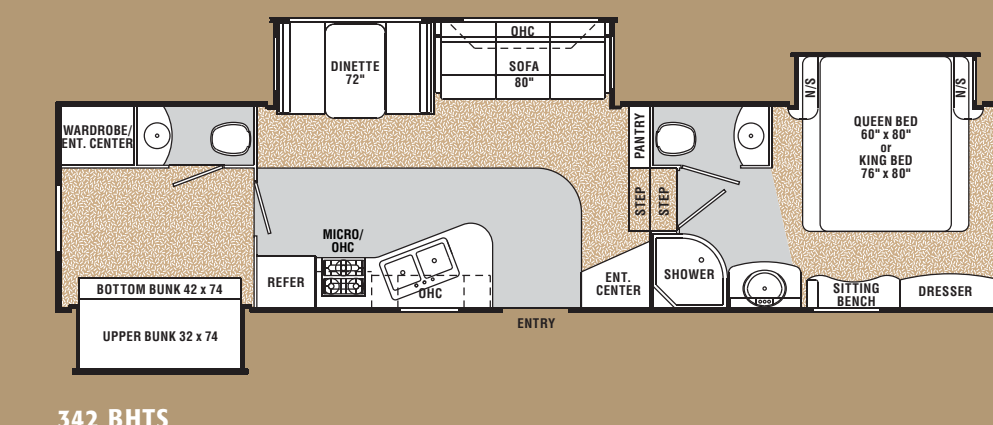
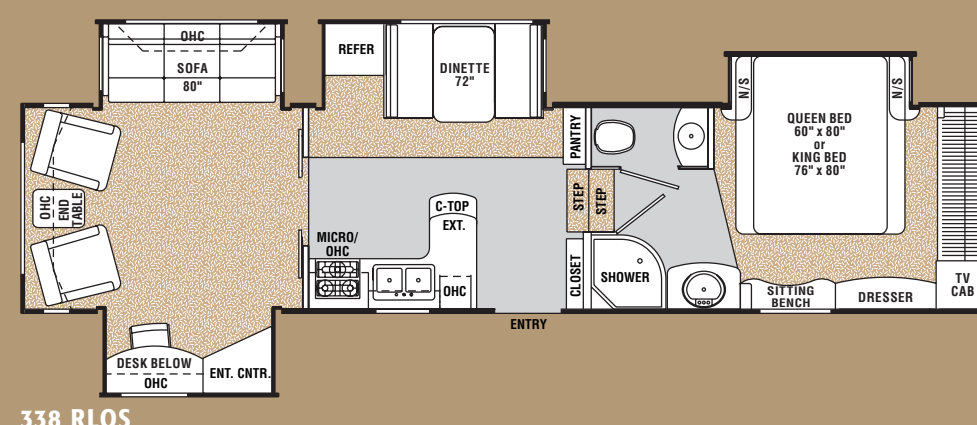
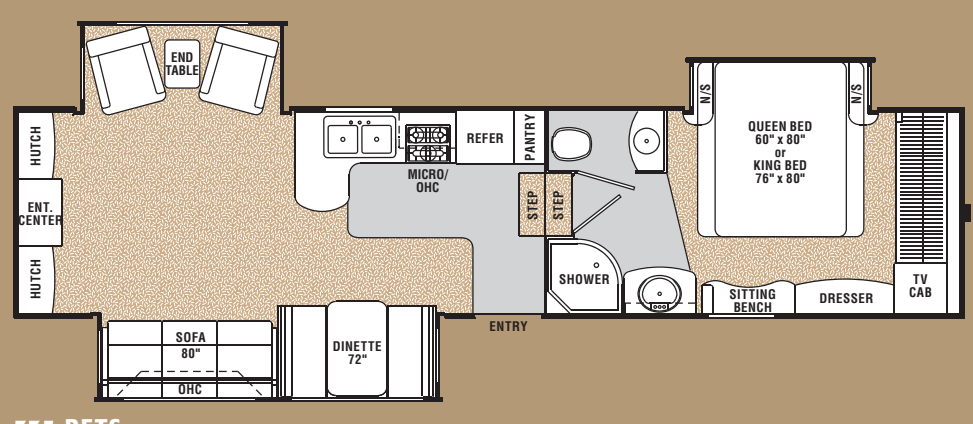
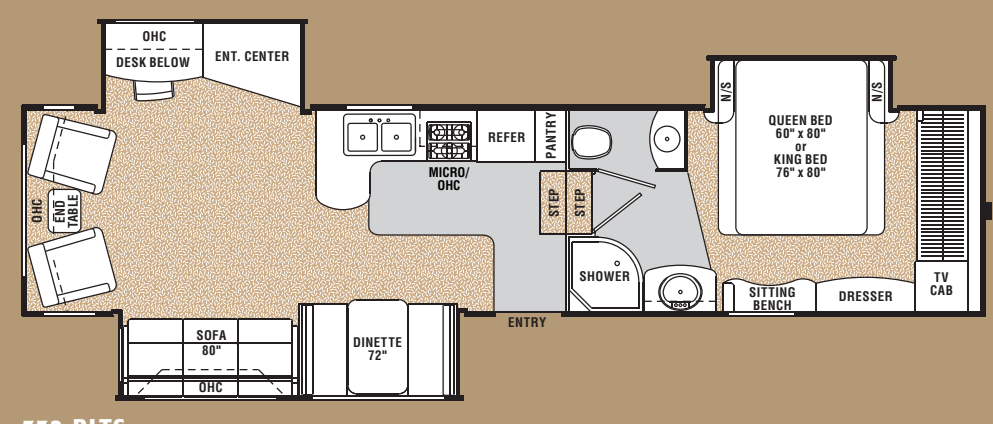
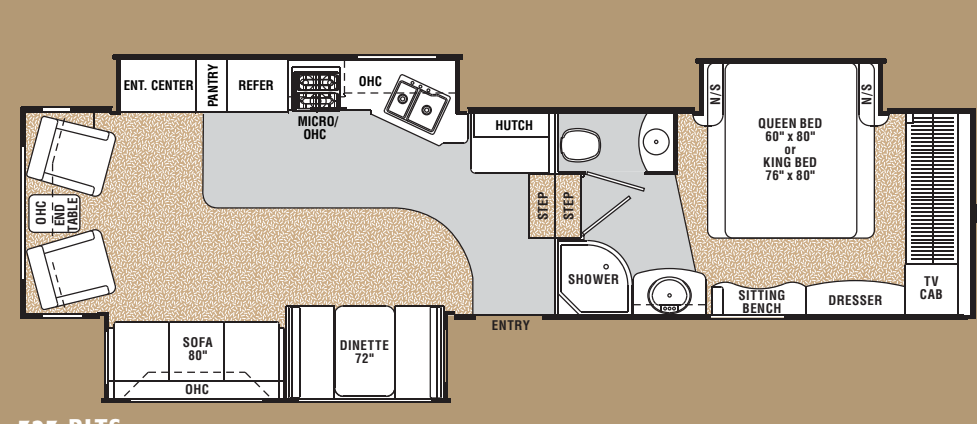
- Brazilian Cherry Cabinetry
- King Bed
- Residential Dinette w/4 Chairs
- Desk Chair (332 RLTS, 338 RLQS)
- Two Rocker Recliners (N/A 342 BHTS)
- 27" Television
- Fireplace
- Washer/Dryer Ready
- 5.5 KW Gas Generator
- CSA Upfit
- Owners Information Guide
- COMFORT AMERICA PACKAGE** (Mandatory Option)
  - TV Antenna
  - Cable TV Jacks (Coach & Bedroom)
  - Exterior Security Lights (Both Sides)
  - 5.1 Surround Sound System w/CD/DVD Player
  - Power Front Hitch Jack
- TOURING WYOMING PACKAGE** (Mandatory Option)
  - Dark Tinted Safety Glass Windows
  - Large 8 Cu. Ft. Double Door Refrigerator
  - Designer Refrigerator Door Inserts
  - Range Cover
  - Folding Assist Entry Door Handle
  - Residential Microwave Oven
  - Skylight over Shower
  - Outside Shower
  - Spare Tire Kit
  - Glass Shower Surround
  - Pleated Shades
  - Ladder
  - Radius Entry and Baggage Doors
  - Door Side Awning
  - 15,000 BTU Ducted Roof Air
  - High Gloss Exterior Sidewall Material
  - Hide-A-Bed Sofa



Surround yourself in luxury. Fluted wood accents, crown molding, oil rubbed bronze hardware and designer furnishings throughout make this your home away from home.



The modern kitchen area is as attractive as it is functional with toe kicks in the cabinet base, designer faucet, upgraded countertops, crown moldings, abundant drawer and cupboard space, and a large window over the sink.



WYOMING	323 RLTS	332 RLTS	335 RETS	338 RLQS	342 BHTS
Base Weight	9,700†	9,649	9,766	10,550†	10,410
Carrying Capacity	4,200†	4,301	4,194	3,750†	3,860
Hitch Weight	2,150†	1,950	1,960	2,500†	2,270
Interior Height (Coach)	7' 5"	7' 5"	7' 5"	8' 6"	8'
Exterior Height (Includes A/C)	13'	13'	13'	13'	13'
Exterior Length	37' 6"	37' 6"	37' 6"	38' 1"	40'
Exterior Width	8'	8'	8'	8'	8'
Awning Length	14'	14'	14'	21'	21'
Sleeping Capacity	6	6	6	6	9
Exterior Storage Capacity (Cu. Ft.)	92	92	92	92	92
Fresh Water Capacity (gal.)	60	60	60	60	60
Waste Water Capacity (gal.)	40	40	40	40	40
Grey Water Capacity (gal.)	80	80	80	80	80
Water Heater Capacity (gal.)	10	10	10	10	10
Tire Size	16"	16"	16"	16"	16"

† Estimated

## ASK ABOUT THESE COACHMEN EXCLUSIVE FEATURES

**DURAtube**  
By Coachmen

**Even Cool**  
By Coachmen

Duratube™ copper LP lines help to extend the life of your appliances. Corrosion resistant copper lines run the full length from LP source to the appliance. (No steel pipe to corrode over time)

Maximize your cooling efficiency with the Even Cool™ air conditioning system. Insulated ductwork with radiused corners provides for smooth air flow.

**ALUMICAGE**  
CONSTRUCTION  
By Coachmen

Aircraft grade aluminum framed construction throughout the walls and floor, provides a solid and lightweight superstructure for the Wyoming.

SureLine™ custom wiring harness provides color coded wires grouped together in a protective autoloom covering. Specific wiring schematics make for easy serviceability.

**SureLine**  
Electrical Harness

Base Weight: The weight of the unit with no fluids, cargo, optional equipment or accessories. • Carrying Capacity: This is the amount of weight available for all fluids, cargo, optional equipment and accessories. The actual "loaded" weight will depend on the equipped unit and the owner's individual choice of cargo, etc.

Legend: ● Carpet ○ Linoleum



WYOMING FIFTH WHEELS BY COACHMEN

# Wyoming

FIFTH WHEELS BY COACHMEN

Coachmen Recreational Vehicle Company, LLC  
 P.O. Box 50, Middlebury, IN 46540 • P.O. Box 948, Fitzgerald, GA 31750  
 Visit our Website at: [www.coachmenrv.com](http://www.coachmenrv.com)  
 ©2006 Coachmen Recreational Vehicle Company, LLC - All rights reserved. Litho in USA 1/06



All information contained in this brochure is believed to be accurate at the time of publication. However, during the model year, it may be necessary to make revisions and Coachmen reserves the right to make all such changes without notice, including changes in prices, colors, models, equipment and specifications as well as the addition of new models and the discontinuance of models shown in the brochure. Therefore, please consult with your Coachmen dealer and confirm the existence of any materials, design or specifications that are material to your purchase decision.

As part of the Coachmen Caravan family, you will receive incredible membership benefits that will help to ensure your safety and enjoyment throughout your RV experiences. Enjoy your Coachmen RV more with the Coachmen Caravan Camping Club.

You are invited to join one of the nation's largest manufacturer sponsored RV clubs. Coachmen Caravan members. With the purchase of a Coachmen RV, for life. Share old stories and make new, in the company of fellow Coachmen Caravan Camping Club is your ticket to making friends CAMPING CLUB.



Coachmen provides a program for overnight parts shipment in critical repair situations.

**PRIORITY PARTS ORDERING** - Customer "E-Assistance", Frequently Asked Questions (FAQ's) and Publications ordering, Trouble Shooting Information, Product Warranty Information. Service Dealer Locator, Maintenance Information, Product Warranty Information. On-line you can find a Coachmen provides you access to key information 24-hours a day through the internet.

**SERVICE SUPPORT CENTER WEB SITE** - Coachmen provides you access to key information 24-hours a day through the internet. On-line you can find a Coachmen provides you access to key information 24-hours a day through the internet. On-line you can find a

**DEALER SUPPORT TOOLS** - Coachmen makes sure that their dealers are well equipped and trained to service your needs with: Systems Manuals, PDI Manuals, Electronic Parts Catalogs, Coach-Link™ "On-Line" Electronic Dealer Communication System and continual service training.

**TOLL FREE SERVICE NUMBERS** - Our toll free phone numbers provide you with direct access to a Coachmen RV Service Representative. Trouble Shooting and Maintenance Guide for the simple answers to frequently asked questions.

**COMPREHENSIVE OWNERS INFORMATION** - For your convenience we offer published materials on key equipment and options, as well as information pertaining to the function of important components. We also offer a true

**COMPREHENSIVE LIMITED WARRANTY** - Coachmen's comprehensive limited warranty provides one-year coverage on most parts, components and appliances. Coachmen stands behind their product and is supported by a network of over 500 service centers.

**MANUFACTURER'S WARRANTY** - Coachmen provides a two-year structural and major components manufacturer's warranty, along with a complete written Warranty Summary Guide, for your peace of mind.

**TWO YEAR STRUCTURAL & MAJOR COMPONENTS SERVICE AFTER THE SALE** - Coachmen provides a two-year structural and major components manufacturer's warranty, along with a complete written Warranty Summary Guide, for your peace of mind.

**COMPREHENSIVE LIMITED WARRANTY** - Coachmen's comprehensive limited warranty provides one-year coverage on most parts, components and appliances. Coachmen stands behind their product and is supported by a network of over 500 service centers.

**COMPREHENSIVE OWNERS INFORMATION** - For your convenience we offer published materials on key equipment and options, as well as information pertaining to the function of important components. We also offer a true

**DEALER SUPPORT TOOLS** - Coachmen makes sure that their dealers are well equipped and trained to service your needs with: Systems Manuals, PDI Manuals, Electronic Parts Catalogs, Coach-Link™ "On-Line" Electronic Dealer Communication System and continual service training.

**TOLL FREE SERVICE NUMBERS** - Our toll free phone numbers provide you with direct access to a Coachmen RV Service Representative. Trouble Shooting and Maintenance Guide for the simple answers to frequently asked questions.

**COMPREHENSIVE OWNERS INFORMATION** - For your convenience we offer published materials on key equipment and options, as well as information pertaining to the function of important components. We also offer a true

**COMPREHENSIVE LIMITED WARRANTY** - Coachmen's comprehensive limited warranty provides one-year coverage on most parts, components and appliances. Coachmen stands behind their product and is supported by a network of over 500 service centers.

**MANUFACTURER'S WARRANTY** - Coachmen provides a two-year structural and major components manufacturer's warranty, along with a complete written Warranty Summary Guide, for your peace of mind.

**TWO YEAR STRUCTURAL & MAJOR COMPONENTS SERVICE AFTER THE SALE** - Coachmen provides a two-year structural and major components manufacturer's warranty, along with a complete written Warranty Summary Guide, for your peace of mind.

**COMPREHENSIVE LIMITED WARRANTY** - Coachmen's comprehensive limited warranty provides one-year coverage on most parts, components and appliances. Coachmen stands behind their product and is supported by a network of over 500 service centers.

**COMPREHENSIVE OWNERS INFORMATION** - For your convenience we offer published materials on key equipment and options, as well as information pertaining to the function of important components. We also offer a true

**DEALER SUPPORT TOOLS** - Coachmen makes sure that their dealers are well equipped and trained to service your needs with: Systems Manuals, PDI Manuals, Electronic Parts Catalogs, Coach-Link™ "On-Line" Electronic Dealer Communication System and continual service training.

**TOLL FREE SERVICE NUMBERS** - Our toll free phone numbers provide you with direct access to a Coachmen RV Service Representative. Trouble Shooting and Maintenance Guide for the simple answers to frequently asked questions.

**COMPREHENSIVE OWNERS INFORMATION** - For your convenience we offer published materials on key equipment and options, as well as information pertaining to the function of important components. We also offer a true

**COMPREHENSIVE LIMITED WARRANTY** - Coachmen's comprehensive limited warranty provides one-year coverage on most parts, components and appliances. Coachmen stands behind their product and is supported by a network of over 500 service centers.

**MANUFACTURER'S WARRANTY** - Coachmen provides a two-year structural and major components manufacturer's warranty, along with a complete written Warranty Summary Guide, for your peace of mind.

**TWO YEAR STRUCTURAL & MAJOR COMPONENTS SERVICE AFTER THE SALE** - Coachmen provides a two-year structural and major components manufacturer's warranty, along with a complete written Warranty Summary Guide, for your peace of mind.

**COMPREHENSIVE LIMITED WARRANTY** - Coachmen's comprehensive limited warranty provides one-year coverage on most parts, components and appliances. Coachmen stands behind their product and is supported by a network of over 500 service centers.

**COMPREHENSIVE OWNERS INFORMATION** - For your convenience we offer published materials on key equipment and options, as well as information pertaining to the function of important components. We also offer a true

**DEALER SUPPORT TOOLS** - Coachmen makes sure that their dealers are well equipped and trained to service your needs with: Systems Manuals, PDI Manuals, Electronic Parts Catalogs, Coach-Link™ "On-Line" Electronic Dealer Communication System and continual service training.

**TOLL FREE SERVICE NUMBERS** - Our toll free phone numbers provide you with direct access to a Coachmen RV Service Representative. Trouble Shooting and Maintenance Guide for the simple answers to frequently asked questions.

**COMPREHENSIVE OWNERS INFORMATION** - For your convenience we offer published materials on key equipment and options, as well as information pertaining to the function of important components. We also offer a true

**COMPREHENSIVE LIMITED WARRANTY** - Coachmen's comprehensive limited warranty provides one-year coverage on most parts, components and appliances. Coachmen stands behind their product and is supported by a network of over 500 service centers.

**MANUFACTURER'S WARRANTY** - Coachmen provides a two-year structural and major components manufacturer's warranty, along with a complete written Warranty Summary Guide, for your peace of mind.

**TWO YEAR STRUCTURAL & MAJOR COMPONENTS SERVICE AFTER THE SALE** - Coachmen provides a two-year structural and major components manufacturer's warranty, along with a complete written Warranty Summary Guide, for your peace of mind.

**COMPREHENSIVE LIMITED WARRANTY** - Coachmen's comprehensive limited warranty provides one-year coverage on most parts, components and appliances. Coachmen stands behind their product and is supported by a network of over 500 service centers.

**COMPREHENSIVE OWNERS INFORMATION** - For your convenience we offer published materials on key equipment and options, as well as information pertaining to the function of important components. We also offer a true

**DEALER SUPPORT TOOLS** - Coachmen makes sure that their dealers are well equipped and trained to service your needs with: Systems Manuals, PDI Manuals, Electronic Parts Catalogs, Coach-Link™ "On-Line" Electronic Dealer Communication System and continual service training.

**TOLL FREE SERVICE NUMBERS** - Our toll free phone numbers provide you with direct access to a Coachmen RV Service Representative. Trouble Shooting and Maintenance Guide for the simple answers to frequently asked questions.

**COMPREHENSIVE OWNERS INFORMATION** - For your convenience we offer published materials on key equipment and options, as well as information pertaining to the function of important components. We also offer a true

**COMPREHENSIVE LIMITED WARRANTY** - Coachmen's comprehensive limited warranty provides one-year coverage on most parts, components and appliances. Coachmen stands behind their product and is supported by a network of over 500 service centers.

**MANUFACTURER'S WARRANTY** - Coachmen provides a two-year structural and major components manufacturer's warranty, along with a complete written Warranty Summary Guide, for your peace of mind.

**TWO YEAR STRUCTURAL & MAJOR COMPONENTS SERVICE AFTER THE SALE** - Coachmen provides a two-year structural and major components manufacturer's warranty, along with a complete written Warranty Summary Guide, for your peace of mind.

**COMPREHENSIVE LIMITED WARRANTY** - Coachmen's comprehensive limited warranty provides one-year coverage on most parts, components and appliances. Coachmen stands behind their product and is supported by a network of over 500 service centers.

**COMPREHENSIVE OWNERS INFORMATION** - For your convenience we offer published materials on key equipment and options, as well as information pertaining to the function of important components. We also offer a true

**DEALER SUPPORT TOOLS** - Coachmen makes sure that their dealers are well equipped and trained to service your needs with: Systems Manuals, PDI Manuals, Electronic Parts Catalogs, Coach-Link™ "On-Line" Electronic Dealer Communication System and continual service training.

## DISCOVER THE COACHMEN ADVANTAGES

FIFTH WHEELS BY COACHMEN

# Wyoming



# Wyoming

FIFTH WHEELS BY COACHMEN

The spacious and functional interior makes Wyoming the perfect place for entertaining friends and family, or just relaxing at the end of a busy day. The 335 RETS shown here features a full wall rear entertainment center and true surround sound stereo. (Shown with an optional television and fireplace)



Flexsteel® lounge chairs are a standard feature on most floorplans. (Upgraded recliner option shown)



Unwind to the soothing glow of the available fireplace. (Optional)



All Wyoming floorplans feature a class leading 80" hide-a-bed sofa that pulls out to a true queen size bed.



Start the day right with designer appointments like the large radius shower and residential vanity area. There are even his and hers dual bath lavs for your convenience.



Rest easy in the well appointed bedroom with ample lighting, plenty of wardrobe storage and optional King bed. (A residential Queen bed with nightstands on both sides is standard)



Enhancing functional space, the Wyoming bedroom features a unique windowbench seat and residential style dresser.

### DECOR SELECTION

Brazilian Cherry



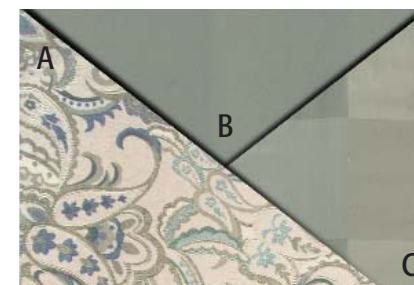
Legacy Glazed Birch



Cobblestone Suede



Juniper Breeze



Endless Garnet



**FABRIC KEY:**  
 A. Main  
 B. Accent  
 C. Bedspread