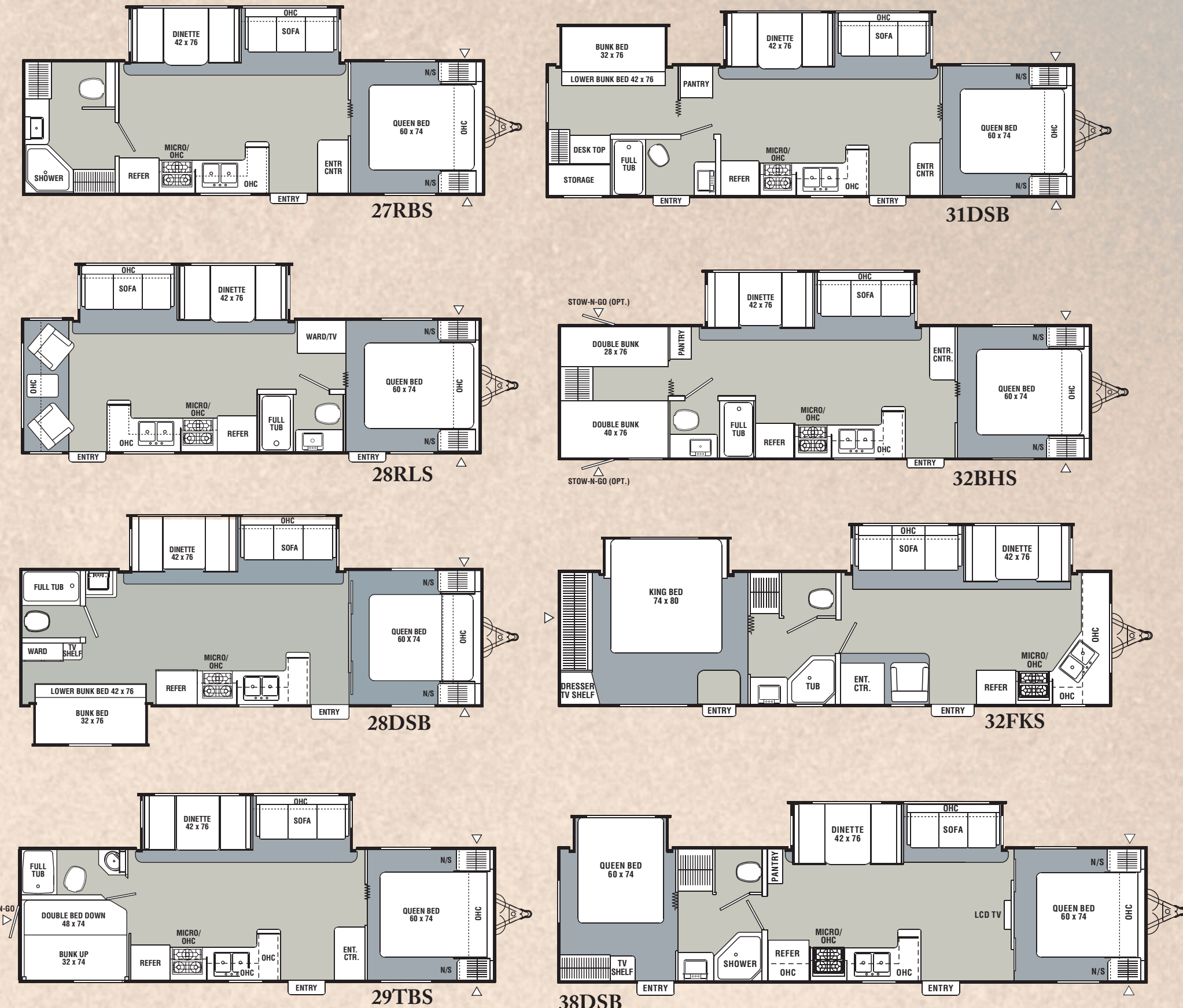
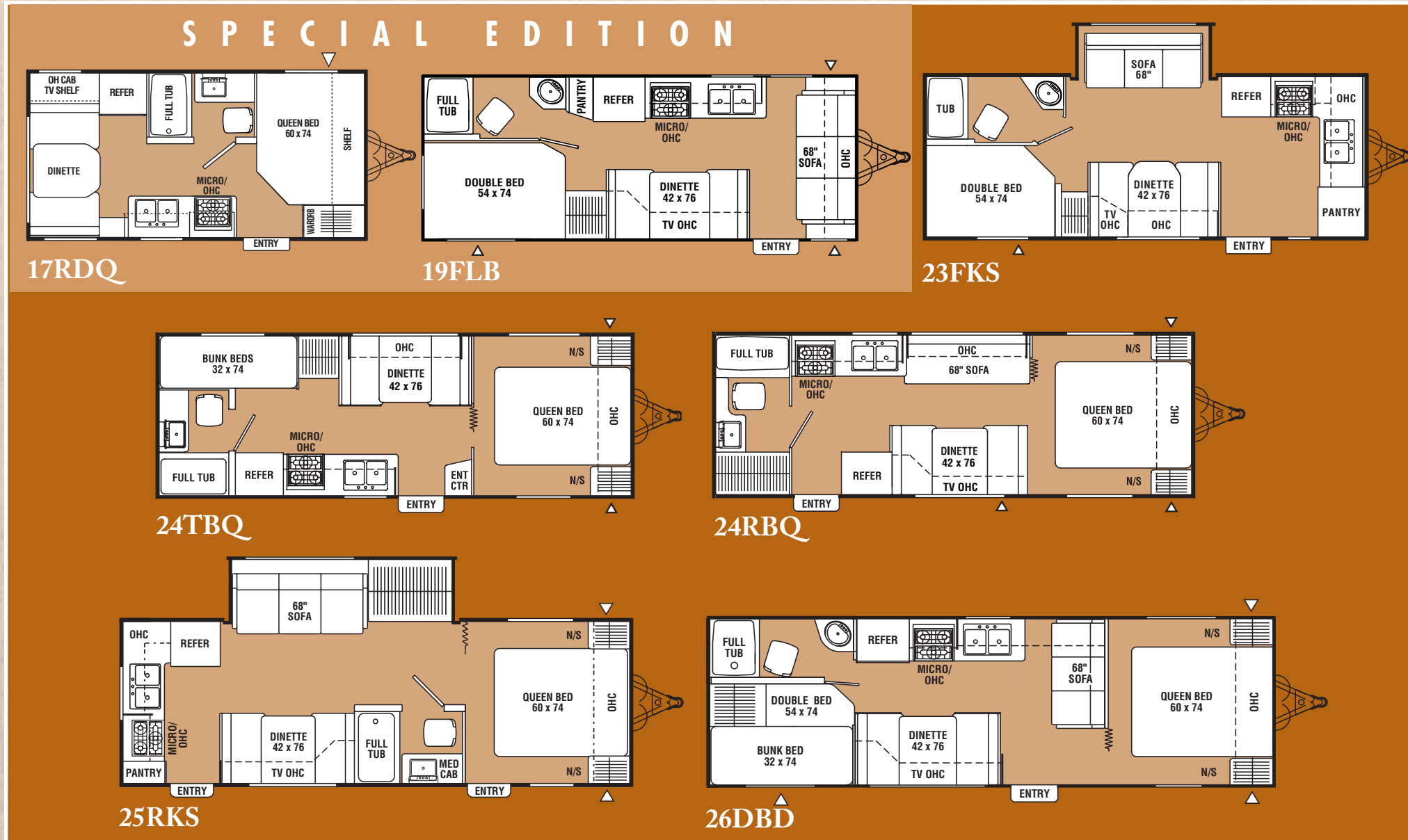




LITE FLOORPLANS

SUPERSLIDE FLOORPLANS



LITE SPECIFICATIONS

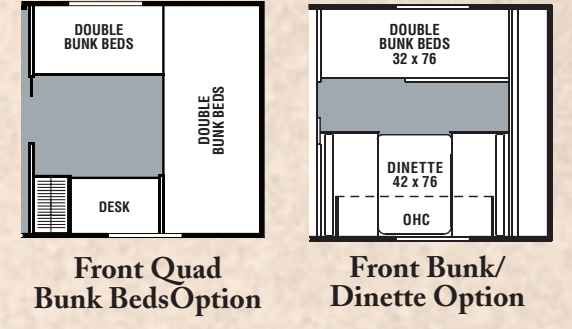
Specifications	17RDQ	19FLB	23FKS	24TBQ	24RBQ	25RKs	26DBD
Base Weight	3,115	3,708	4,547	4,129	3,982	4,714	4,381
Carrying Capacity	1,885	2,582	3,173	2,031	2,008	2,886	2,619
Hitch Weight	370	690	720	560	390	640	580
Interior Height	81"	81"	81"	81"	81"	81"	81"
Exterior Height (Includes A/C)	10' 6"	10' 6"	11' 0"	10' 6"	10' 6"	10' 6"	10' 6"
Exterior Length	19' 5"	23' 8"	24' 7"	26' 7"	25' 9"	27' 6"	30' 4"
Exterior Width	8'	8'	8'	8'	8'	8'	8'
Awning Length	12'	16'	16'	16'	16'	12'	16'
Sleeping Capacity	4	6	6	6	5	5	8
Exterior Storage Capacity (Cu. Ft.)	44	44	27	51	51	51	77
Fresh Water Capacity (gal.)	36	36	36	36	36	36	36
Waste Water Capacity (gal.)	30	30	30	30	30	30	30
Grey Water Capacity (gal.)	27	27	54	27	27	30	27
Tire Size	X	X	X	X	X	X	X

SUPERSLIDE SPECIFICATIONS

Specifications	27RBS	28RLS	28DSB	29TBS	31DSB	32BHS	32FKS	38DSB
Base Weight	5,647	5,768	5,900†	5,903	6,764	6,449	6,837	6,978
Carrying Capacity	3,083	2,872	2,900†	2,817	3,736	3,451	3,663	3,522
Hitch Weight	730	640	800†	720	860	800	1,070	800
Interior Height	81"	81"	81"	81"	81"	81"	81"	81"
Exterior Height (Includes A/C)	11' 0"	11' 0"	11' 2"	11' 0"	11' 2"	11' 0"	11' 2"	11' 2"
Exterior Length	30' 3"	30' 2"	29' 10"	31' 4"	34' 7"	34' 7"	34' 10"	37' 6"
Exterior Width	8'	8'	8'	8'	8'	8'	8'	8'
Awning Length	16'	16'	12'	16'	16'	16'	16'	21'
Sleeping Capacity	5	5	7	8	8	11	5	6/8/10
Exterior Storage Capacity (Cu. Ft.)	51	51	51	182	84	157	13	51
Fresh Water Capacity (gal.)	36	36	36	36	36	36	36	36
Waste Water Capacity (gal.)	30	30	30	30	30	30	30	30
Grey Water Capacity (gal.)	30	30	57	27	30	27	30	30
Tire Size	■	■	■	■	■	■	■	■

†= Estimated X= ST205/75D15C ■=ST225/75D15D
 Base Weight: The weight of the unit with no fluids, cargo, optional equipment or accessories.
 Carrying Capacity: This is the amount of weight available for all fluids, cargo, optional equipment and accessories. The actual "loaded" weight will depend on the equipped unit and the owner's individual choice of cargo, etc.

▲ Outside Storage Location ■ Carpeting



Lift up queen bed storage area. (Most Models)



Dolby® Digital 5.1 Surround Sound system with DVD/CD player. (n/a 17RDQ, 19FLB)



Huge pass through exterior storage. (Most Models)



Deluxe outside shower. (Optional)



Diamond plate stone guard. (Optional)



Residential metal drawer guides on every drawer.

All information contained in this brochure is believed to be accurate at the time of publication. However, during the model year, it may be necessary to make revisions and Coachmen reserves the right to make all such changes without notice, including changes in prices, colors, materials, equipment and specifications, as well as the addition of new models and the discontinuance of models shown in this brochure. Therefore, please consult with your Coachmen dealer and confirm the existence of any materials, design or specifications that are material to your purchase decision.



Go Where Your Spirit Leads You.



2007

TRAVEL TRAILERS BY COACHMEN
Spirit of America

Spirit of America TRAVEL TRAILERS BY COACHMEN

Spirit of America

TRAVEL TRAILERS BY COACHMEN



User friendly features and residential appointments are hallmarks of the Spirit of America. The 32BHS shown here boasts a flush floor slideroom, upgraded lighting package, residential window treatments, high spout kitchen faucet, under sink silverware drawer, surround sound system, designer bedspread and fabric headboard.



Fabric Key—
A. Main
B. Accent
C. Bedspread

Decor Selections

Dazzling interiors feature skillfully coordinated upholstery and window treatments. Coachmen RV chooses only top-grade fabrics wear-dated as heavy-duty. These fabrics have been tested for durability beyond 15,000 double rubs (in and out action) to simulate heavy usage. An average chair in an American home is subject to only 3,000 double rubs per year.

Spirit of America

TRAVEL TRAILERS BY COACHMEN

Discover the Coachmen Advantages Service After the Sale

Two Year Structural & Major Components Manufacturer's Warranty – Coachmen provides a two-year structural and major components manufacturer's warranty, along with a complete written Warranty Summary Guide, for your peace of mind.

Comprehensive Limited Warranty – Coachmen's Comprehensive Limited Warranty provides one-year coverage on most parts, components and appliances. Coachmen stands behind their product and is supported by a network of over 300 service centers.

Comprehensive Owner's Information – For your convenience we offer published materials on key equipment and options, as well as information pertaining to the function of important components. We also offer a true Trouble Shooting & Maintenance Guide for the simple answers to frequently asked questions.



Toll Free Service Numbers – Our toll free phone numbers provide you with direct access to a Coachmen RV Service Representative.

Dealer Support Tools – Coachmen makes sure that their dealers are well equipped and trained to service your needs with: Systems Manuals, PDI Manuals, Electronic Parts Catalogs, Coach-Link™ "On-Line" Electronic Dealer Communication System, and continual service training.

Service Support Center Web Site – Coachmen provides you access to key information 24-hours a day through the Internet. On-line you can find a Service Dealer Locator, Maintenance Information, Trouble Shooting Information, Product Warranty Information, Customer "E-Assistance", Frequently Asked Questions (FAQs), and Publications ordering dating back to 1972 models.

Priority Parts Ordering – Coachmen provides a program for overnight parts shipment in critical repair situations.

Coachmen Caravan Camping Club™

Coachmen Caravan Camping Club is your ticket to making friends for life. Share old stories and make new, in the company of fellow Coachmen Caravan members. With the purchase of a Coachmen RV, you are invited to join one of the nation's largest manufacturer sponsored RV clubs.

As part of the Coachmen Caravan family, you will receive incredible membership benefits that will help to ensure your safety and enjoyment throughout your RV experiences. Enjoy your Coachmen RV more with the Coachmen Caravan Camping Club.



Coachmen
Recreational Vehicles
Visit our website at:
www.coachmenrv.com

Coachmen Recreational Vehicle Company, LLC
P.O. Box 30, Middlebury, IN 46540
P.O. Box 948, Fitzgerald, GA 31750

© Copyright 2005 Coachmen Recreational Vehicle Company, LLC - All rights reserved. Litho in USA 11/06

STANDARD FEATURES

INTERIOR APPOINTMENTS

- Spicy Oak Cabinetry
- Hardwood Mortise & Tenon Cabinet Doors
- Raised Panel Cabinet Doors - Coach Area (n/a 17RDQ, 19FLB)
- Stile and Rail Cabinet Front Construction
- Residential Metal Drawer Guides
- Silverware Drawer (Most Models)
- Designer Box Valances
- Mini Blinds
- Wall Paper Border - Kitchen and Slideroom Areas
- Carpet in Bedroom and Living Area (Super Slide Models)
- Linoleum Flooring Kitchen and Bath Area (Super Slide Models)
- Linoleum Flooring Throughout (Lite Models)
- Booth Dinette w/Fabric End Panels
- Pedestal Dinette Table
- Jack Knife Sofa (n/a 17RDQ, 24TBQ)
- One Swivel Rocker (32FKS)
- Two Swivel Rockers (28RLS)
- Lav Medicine Cabinet

SLEEPING

- Queen Bed (n/a 19FLB, 23FKS, 32FKS)
- Double Bed (19FLB, 23FKS)
- King Bed (32FKS)
- Innerspring Mattress - Main Bed (n/a 17RDQ, 19FLB, 23FKS)
- Designer Bedspread (n/a 17RDQ, 19FLB)
- Bunk Beds (24TBQ, 28DSB)
- Bunk Beds w/ Lower Double Bed (26DBD)
- Quad Bunk Beds (32BHS)
- Flip Up Bunk Beds w/Bottom Double Bed (29TBS)

APPLIANCES & ACCESSORIES

- 3-Burner (HO) 16" Range w/ Oven
- Power/Lighted Range Hood
- Monitor Panel
- Stainless Steel Kitchen Sink
- Residential Refrigerator (38DSB)
- Cable TV Jack

HEATING & AIR CONDITIONING

- 30,000 BTU E.I. Furnace (Super Slide Models)

- 25,000 BTU E.I. Furnace (Lite Models-Except 17RDQ)
- 18,000 BTU E.I. Furnace (17RDQ)
- In-Floor Ducted Heat
- Even Cool™ Insulated A/C Ducting (n/a 17RDQ, 19FLB)

ELECTRICAL & LIGHTING

- 55 Amp Power Center
- Outside Receptacle GFI
- Patio Light
- LP Hitch Light (n/a 17RDQ, 19FLB)
- Residential Style Interior Light Fixture (n/a 17RDQ, 19FLB)
- Power Bath Vent
- 19" LCD TV (38DSB)

PLUMBING & LP SYSTEMS

- Foot Pedal Toilet
- 6-Gallon Electronic Ignition Water Heater (n/a 17RDQ, 19FLB)
- 6-Gallon Water Heater (17RDQ, 19FLB)
- Water Heater By-Pass Valve
- Demand Water Pump
- Below Floor Low Point Drains
- Duratube™ Full Length Copper LP Lines

EXTERIOR / CONSTRUCTION

- Rubber Roof
- Metal Siding
- Fiberglass Insulation
- I-beam Chassis Construction
- Gutter Rail
- Rear Steel Bumper w/ Hose Storage
- Double Entry Step (Lite Models)
- Triple Entry Step (Super Slide Models)
- Second Entrance Door (28RLS, 32FKS, 38DSB)
- Radius Entrance Door
- Radius Baggage Doors
- Pass Through Exterior Storage (Most Models)
- Straight Axles
- Electric Rack and Pinion Slide-Out Rooms (Slide Models)
- Flush Floor Main Slide-Out Room (All Slide Models Except 25RKS)

SAFETY

- LP Leak Alarm
- Fire Extinguisher
- Smoke Alarm
- Carbon Monoxide Detector
- Dead Bolt Entrance Door Lock
- Safety Glass Windows

OPTIONS

- Front Bunk Beds w/Dinette (38DSB)
- Front Quad Bunk Beds (38DSB)
- Dual Stow-N-Go™ Bunk Storage Doors (32BHS)
- Sliding Patio Door (38DSB)
- Deluxe Sofa w/ Hide-A-Bed (n/a Lite Models)
- Outside Shower (n/a 17RDQ, 19FLB)
- Tinted Safety Glass Windows (n/a 17RDQ, 19FLB)
- Spare Tire (n/a 17RDQ, 19FLB)
- Roof Ladder (n/a 17RDQ, 19FLB)
- Diamond Plate Front Stoneguard (n/a 17RDQ, 19FLB)
- 30 lb. LP Bottles (Std on Super Slide Models) (n/a 17RDQ, 19FLB)
- 6 Gallon Gas/Electric E.I. Water Heater (Mandatory Option) (n/a 17RDQ, 19FLB)
- Catalina Package (Fiberglass Sidewalls) (n/a 17RDQ, 19FLB)
- Convenience Package (17RDQ, 19FLB Only); Includes 13,500 BTU Roof A/C and Microwave
- CSA Upfit
- Freedom Package (Mandatory Option)
 - Dual 30 lb. LP Bottles w/Auto Changeover (Super Slide Models)
 - Dual 20 lb. LP Bottles w/Auto Changeover (Lite Models)
- Molded LP Bottle Cover (n/a 17RDQ, 19FLB)
- One-Piece ABS Tub Surround
- Microwave Oven
- TV Antenna w/Rotor Package
- Double Door Refrigerator (n/a 38DSB)
- 5.1 Surround Sound w/ AM/FM/DVD/CD Player
- Patio Awning
- 2 Retractable Stabilizer Jacks (Non-Slide Models) (n/a 17RDQ, 19FLB)
- 4 Retractable Stabilizer Jacks (All Slide Models)
- 13,500 BTU Ducted Roof A/C (n/a 17RDQ, 19FLB)

Ask Your Dealer About These Coachmen Exclusive Design Features



SureLine™ custom wiring harness provides color coded wires grouped together in a protective autoloam covering. Specific wiring schematics make for easy serviceability.



Duratube™ copper LP lines help to extend the life of your appliances. Corrosion resistant copper lines run the full length from LP source to the appliance (No steel pipe to corrode over time).



Maximize your cooling efficiency with the Even Cool™ air conditioning system. Insulated ductwork with radiused corners provides for smooth air flow.



Expand your cargo area with Stow-N-Go™ flip up bunk storage (Select models)