

# CHAPARRAL™

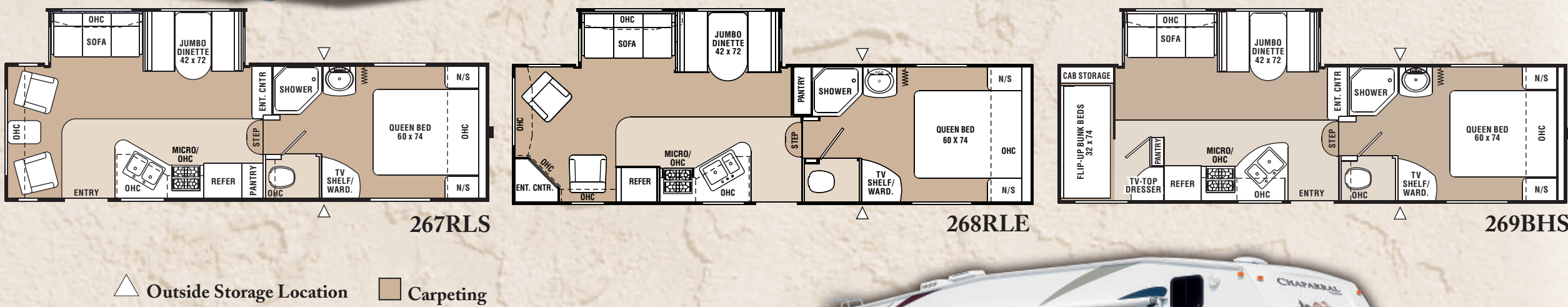
By Coachmen

Fifth Wheels

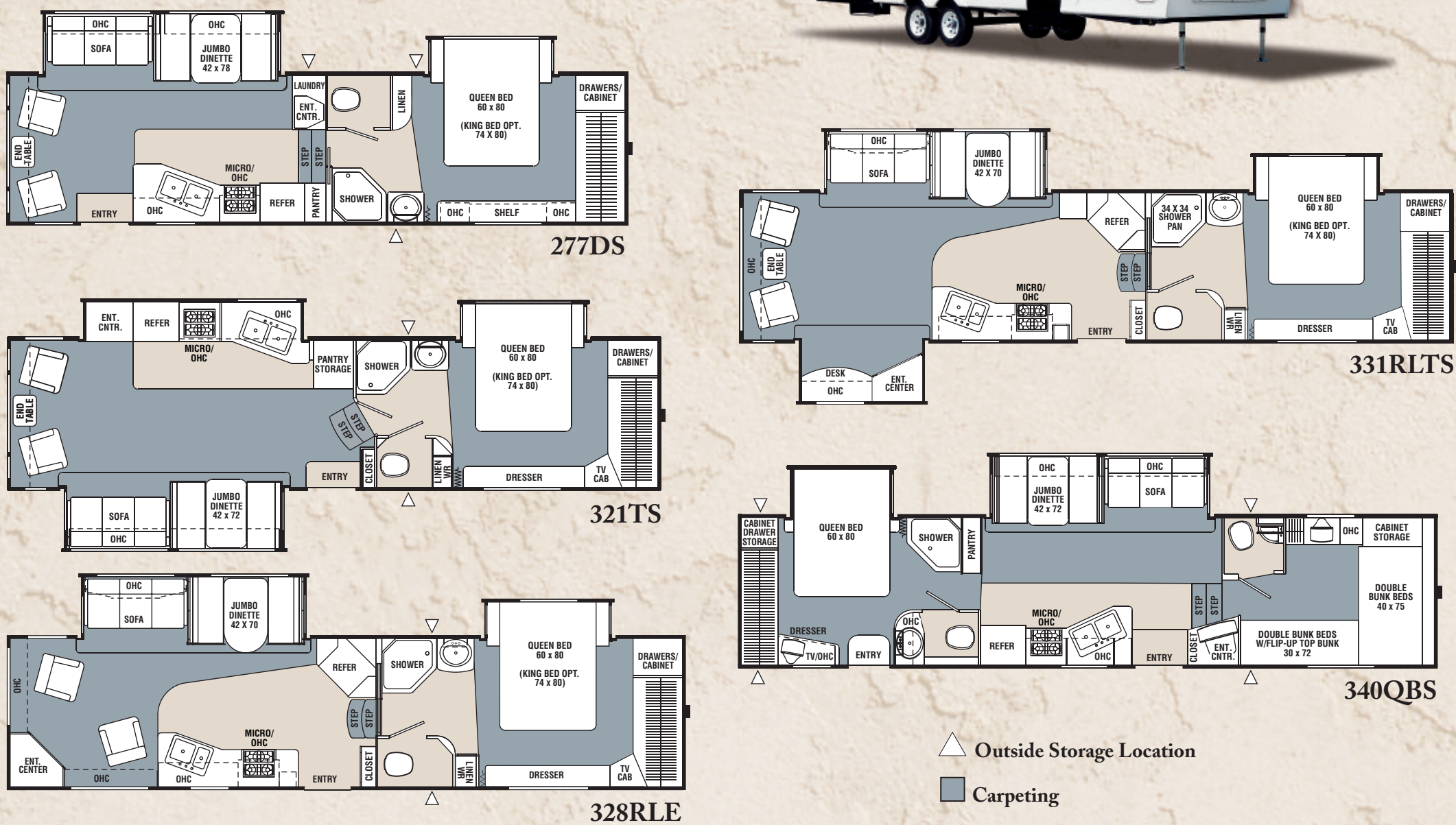


## LITE FLOORPLANS

(Engineered for Many of Today's 1/2 Ton Trucks)



## FULL PROFILE FLOORPLANS



### STANDARD FEATURES

#### INTERIOR APPOINTMENTS

- Legacy Glazed Birch Cabinetry
- Raised Panel Cabinet Doors
- Oil Rubbed Bronze Hardware
- Techwood Drawer Sides
- Overhead Cabinet in Slide-Out
- Linoleum Flooring (Kitchen and Bath)
- Carpet w/Pad (Living and Bedroom)
- Designer Window Treatments
- Mini Blind Window Shades
- Designer Countertops
- Composite Double Bowl Kitchen Sink
- Two Sink Covers
- Jack Knife Sofa
- Jumbo 42" Wide Booth Dinette
- Two Flexsteel Swivel Rockers (267RLS, 268RLE, 277DS, 321TS, 328RLE, 331RLTS)
- Coach Entertainment Center
- Laundry Chute
- Decorative Mirrored Wardrobe Doors
- One-Piece ABS Shower Surround

#### SLEEPING

- 60" x 74" Queen Bed (Lite Models)
- 60" x 80" Queen Bed (High Profile Models)
- Deluxe Innerspring Mattress
- Bedlift Storage System (Master Bed)
- Designer Bedspread

#### APPLIANCES & ACCESSORIES

- 3-Burner Hi Output Range w/21" Oven

#### EXTERIOR / CONSTRUCTION

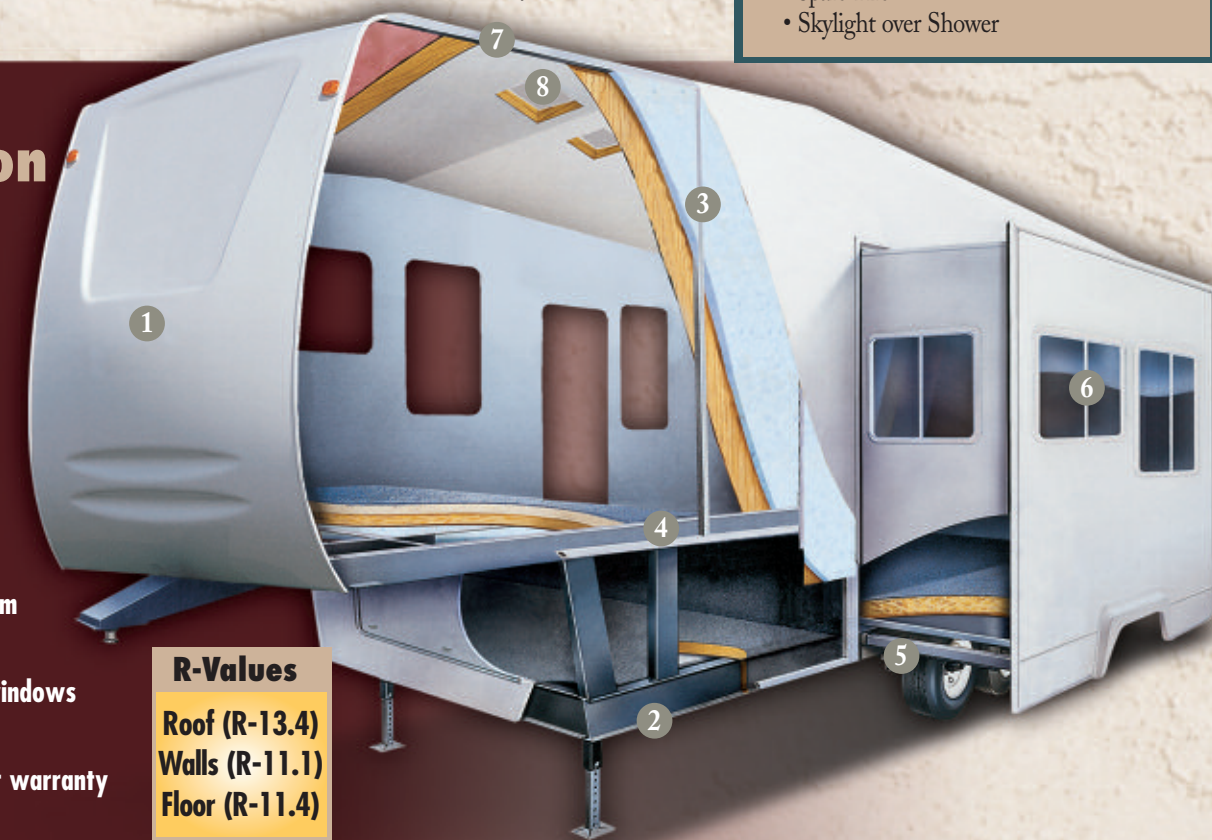
- Range Cover
- Lighted Power Range Hood
- Pre-Wired For Satellite Dish
- Pre-Wired for Phone
- Upgraded Interior Lighting Package
- Optic Lens Lighting
- GFI Circuit
- Outside Receptacle GFI
- Patio Light
- Hitch Light
- Sureline™ Electrical Harness
- 55 Amp Electronic Converter
- 30 Amp Service
- HEATING & AIR CONDITIONING
- 31,000 BTU E.I. Furnace (Lite Models)
- 34,000 BTU E.I. Furnace (Full Profile Models)
- Power Bath Vent
- Even Cool™ Insulated A/C Ducting
- PLUMBING & LP SYSTEMS
- Double 30 lb. LP Bottles w/Auto Change-Over
- Duratabe™ Copper LP Lines
- Designer Kitchen Faucet
- Demand Water Pump
- Water Heater By-Pass Valve
- Porcelain Toilet w/ Foot Pedal Flush
- Gravity and City Water Hookups
- Monitor Panel
- 6-Gallon Gas/Electric E.I. Water Heater
- Rack and Pinion Slide-Out Rooms
- Flush Floor Main Slide-Out w/Manual Backup
- Alumicage™ Sidewall and Floor Construction
- Laminated Sidewall and Floor Construction
- Fiberglass Exterior Sidewall Material
- ABS Front Cap (Full Profile Models)
- Fiberglass Wrapped Front (Lite Models)
- Gutter Rail With Awning Rail
- Triple Entry Step
- 15" Radial Tires
- White Rally Wheels
- Large Pass-Through Storage
- Extended Hitch Pin
- Rubber Roof
- Slideroom Awning Backers
- Chrome Wheel Covers
- 30" Entrance Door
- I-Beam Chassis Construction
- Powder Coated Frame
- Retractable Stabilizer Jacks
- Fully Enclosed and Heated Underbelly
- Waste Tank Flush (Full Profile Models)
- E-Z Lube Axles (Full Profile Models)
- SAFETY
- LP Leak Alarm
- Fire Extinguisher
- Smoke Detector
- CO Detector
- Entrance Door Dead Bolt Lock
- Break Away Switch

### OPTIONS

- Spicy Oak Cabinetry
- Residential Dinette w/4 Chairs
- King Bed (277DS, 321TS, 328RLE, 331RLTS)
- Hide-A-Bed Sofa (n/a 340QBS)
- Two Flexsteel® Rocker Recliner Chairs (277DS, 321TS, 328RLE, 331RLTS)
- Large 8 Cu. Ft. Double Door Refrigerator
- 19" LCD Television (Lite Models)
- 27" Color Television (Full Profile Models)
- Coach Skylight (Lite Models)
- 15,000 BTU Roof Air Conditioner (Lite Models)
- Ceiling Fan (Full Profile Models)
- Fireplace (268RLE, 331RLTS)
- Owners Information Guide
- CSA Upfit
- Comfort America Package - (Mandatory Option)
  - TV Antenna
  - Cable TV Jacks (Coach & Bedroom)
  - 5.1 Surround Sound System w/ CD/DVD Player
  - Security Light(s)
  - Power Jacks (Front)
- Touring America Package - (Mandatory Option)
  - Double Door Refrigerator
  - Raised 6-Panel Refrigerator Door Inserts
  - Dark Tinted Safety Glass Windows
  - Night Shades
  - Residential Microwave Oven
  - 13,500 BTU Ducted Roof Air Conditioner (Lite Models)
  - 15,000 BTU Ducted Roof Air Conditioner (Full Profile Models)
  - Glass Shower Door
  - Outside Shower
  - Folding Assist Entry Door Handle
  - Ladder
  - Radius Entry and Baggage Doors
  - Patio Awning
  - Spare Tire
  - Skylight over Shower

### Quality Construction

- ABS front cap (Wrapped fiberglass front - Lite Models)
- Powder coated I-beam chassis frame
- Laminated aluminum framed sidewalls
- Laminated aluminum framed floor
- Rack and pinion slideroom mechanism
- Dark tint safety glass windows
- One piece rubber roof membrane with 12-year warranty
- Crowned roof truss



**R-Values**  
 Roof (R-13.4)  
 Walls (R-11.1)  
 Floor (R-11.4)

### CHAPARRAL LITE FULL PROFILE

Specifications	267RLS	268RLE	269BHS	277DS	321TS	328RLE	331RLTS	340QBS
Base Weight	6,315	6,831	6,644	8,300	9,216	8,900†	9,400†	9,043
Carrying Capacity	2,725	2,429	2,466	2,600	2,674	2,500†	2,550†	2,677
Hitch Weight	1,040	1,260	1,110	1,760	1,890	1,700†	1,910†	1,720
Interior Height (Coach)	6'10"	6'10"	6'10"	7'5"	7'5"	7'5"	7'5"	8'5"
Exterior Height (Includes A/C)	11' 11"	11' 11"	11' 11"	12' 11"	12' 11"	12' 11"	12' 11"	12' 11"
Exterior Length	28' 10"	30' 3"	30' 3"	32' 11"	34' 5"	35' 8"	37' 7"	36' 10"
Exterior Width	8'	8'	8'	8'	8'	8'	8'	8'
Awning Length	18'	20'	17'	16'	16'	17'	17'	17'
Sleeping Capacity	6	6	8	6	6	6	6	10
Exterior Storage Capacity (Cu. Ft.)	45	45	45	120	105	90	90	62
Fresh Water Capacity (gal.)	40	40	40	40	40	40	40	40
Waste Water Capacity (gal.)	30	30	30	30	30	30	30	60
Grey Water Capacity (gal.)	30	60	60	30	30	30	30	30
Water Heater Capacity (gal.)	6	6	6	6	6	6	6	6
Tire Size	15"	15"	15"	15"	15"	15"	15"	15"

†= Estimated

Base Weight: The weight of the unit with no fluids, cargo, optional equipment or accessories.

Carrying Capacity: This is the amount of weight available for all fluids, cargo, optional equipment and accessories. The actual "loaded" weight will depend on the equipped unit and the owner's individual choice of cargo, etc.

### Ask Your Dealer About These Coachmen Exclusive Design Features



SureLine™ custom wiring harness provides color coded wires grouped together in a protective autoloop covering. Specific wiring schematics make for easy serviceability.



Duratube™ copper LP lines help to extend the life of your appliances. Corrosion resistant copper lines run the full length from LP source to the appliance (No steel pipe to corrode over time.).



Maximize your cooling efficiency with the Even Cool™ air conditioning system. Insulated ductwork with radiused corners provides for smooth air flow.



Aircraft grade aluminum framed construction throughout the walls and floor, provides a solid and lightweight superstructure for the Chaparral.

All information contained in this brochure is believed to be accurate at the time of publication. However, during the model year, it may be necessary to make revisions and Coachmen reserves the right to make all such changes without notice, including changes in prices, colors, materials, equipment and specifications, as well as the addition of new models and the discontinuance of models shown in this brochure. Therefore, please consult with your Coachmen dealer and confirm the existence of any materials, design or specifications that are material to your purchase decision.



Chaparral Lite



Full Profile

# CHAPARRAL Fifth Wheels

CHAPARRAL Fifth Wheels by Coachmen

# CHAPARRAL Fifth Wheels

by Coachmen



Surround yourself in luxury with residential style cabinetry, designer window treatments, a plush sofa, and oil rubbed bronze hardware and fixtures. (321TS shown with Legacy Glazed Birch cabinetry)



Get ready in style. A neo-angle shower with residential style glass enclosure and designer faucet are just a couple of the designer touches found in every Chaparral.



**Fabric Key—**  
 A. Main  
 B. Accent  
 C. Bedspread

**Decor Selections**  
 Dazzling interiors feature skillfully coordinated upholstery and window treatments. Coachmen RV chooses only top-grade fabrics wear-dated as heavy-duty. These fabrics have been tested for durability beyond 15,000 double rubs (in and out action) to simulate heavy usage. An average chair in an American home is subject to only 3,000 double rubs per year.

# CHAPARRAL Fifth Wheels

by Coachmen

## Discover the Coachmen Advantages

### Service After the Sale

**Two Year Structural & Major Components Manufacturer's Warranty** – Coachmen provides a two-year structural and major components manufacturer's warranty, along with a complete written Warranty Summary Guide, for your peace of mind.

**Comprehensive Limited Warranty** – Coachmen's Comprehensive Limited Warranty provides one-year coverage on most parts, components and appliances. Coachmen stands behind their product and is supported by a network of over 300 service centers.



**Comprehensive Owner's Information** – For your convenience we offer published materials on key equipment and options, as well as information pertaining to the function of important components. We also offer a true Trouble Shooting & Maintenance Guide for the simple answers to frequently asked questions.

**Toll Free Service Numbers** – Our toll free phone numbers provide you with direct access to a Coachmen RV Service Representative.

**Dealer Support Tools** – Coachmen makes sure that their dealers are well equipped and trained to service your needs with: Systems Manuals, PDI Manuals, Electronic Parts Catalogs, Coach-Link™ "On-Line" Electronic Dealer Communication System, and continual service training.

**Service Support Center Web Site** – Coachmen provides you access to key information 24-hours a day through the Internet. On-line you can find a Service Dealer Locator, Maintenance Information, Trouble Shooting Information, Product Warranty Information, Customer "E-Assistance", Frequently Asked Questions (FAQ's), and Publications ordering dating back to 1972 models.

**Priority Parts Ordering** – Coachmen provides a program for overnight parts shipment in critical repair situations.



Designed with your comfort in mind, Chaparral Lite provides an extremely spacious non-slide bedroom. Under bed storage, overhead cabinets and a side wardrobe closet provide plenty of room for your travel gear.



Relaxing is easy with Chaparral Lite's spacious super slide floorplans and designer appointments. Enjoy the modern entertainment center with leaded glass doors, home theatre system, and optional 19" LCD TV. (267RLS shown with Spicy Oak cabinetry)



Smart cabinetry design offers plenty of door and drawer storage for all your camping needs. Catbedral doors, spice racks, designer faucet, a large double bowl sink, and an abundance of storage are only a few of the residential amenities.



The large fold out grab handle provides a sturdy handhold when entering and exiting the unit.



Storage capacity is huge on the Chaparral with a pass through storage bay on every model.



Extend the camping season with a fully enclosed underbelly and gate valves, as well as heated tanks.



Flexsteel® chairs are standard on most floorplans. (Recliner option shown)

## Coachmen Caravan Camping Club™

Coachmen Caravan Camping Club is your ticket to making friends for life. Share old stories and make new, in the company of fellow Coachmen Caravan members. With the purchase of a Coachmen RV, you are invited to join one of the nation's largest manufacturer sponsored RV clubs. As part of the Coachmen Caravan family, you will receive incredible membership benefits that will help to ensure your safety and enjoyment throughout your RV experiences. Enjoy your Coachmen RV more with the Coachmen Caravan Camping Club.



**Coachmen**  
Recreational Vehicles  
Visit our website at:  
[www.coachmenrv.com](http://www.coachmenrv.com)

Coachmen Recreational Vehicle Company, LLC  
 P.O. Box 30, Middlebury, IN 46540  
 P.O. Box 948, Fitzgerald, GA 31750  
 © Copyright 2006 Coachmen Recreational Vehicle Company, LLC -  
 All rights reserved Litho in USA 11/06