

2007

Adrenaline XLV

EXTREME LIFESTYLE VEHICLE / Travel Trailers & Fifth Wheels



Leader to the Great Outdoors®

2007

Adrenaline XLV

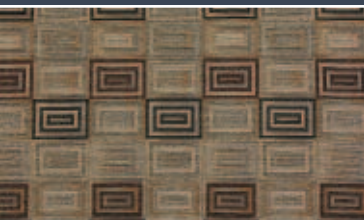
Travel Trailers and Fifth Wheels



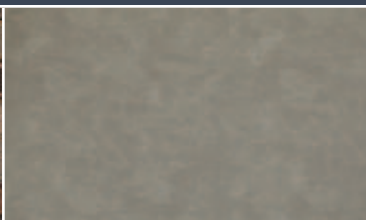
Oversized cabinets provide secure storage space for all of your belongings inside the coach. Extra deep cabinets protect helmets and other bulky gear – keeping them up and out of the way.

Adrenaline XLV is the ultimate endurance toy box for enthusiasts who like to get out there and stay a while. The Adrenaline packs industry leading capacities, including 200 gallons of fresh water, and an available 16 gallon effective water heater. This residential getaway extends your play time with a huge 80 lb LP bottle capacity and an optional pair of 30 gallon fuel reservoirs, while providing ample cargo storage to transport your ATVs, motorcycles, snowmobiles and other sporting gear.

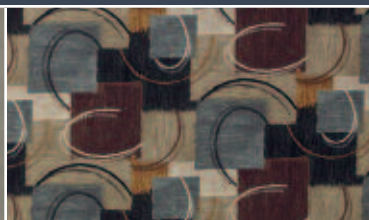
At the end of an active day, stretch out and relax in the spacious master suite of the Adrenaline Fifth Wheel. Pack for any event with abundant dresser and closet storage space. (Shown with Welbeck Birch cabinetry)



Main Fabric



Accent



Bedroom

Mojave Stone Interior Décor*

**Optional Granite Dunes décor package replaces the main fabric with easy to clean vinyl material.*



A roomy bath with glass enclosed shower, skylight, ample storage and a mirrored vanity add to the appeal and functionality of the Adrenaline.



Adrenaline Travel Trailers and Fifth Wheels are loaded with plenty of overhead storage, an adjustable height indoor/outdoor dinette table, fold-up dinette seats and sofa(s). (Shown with Mojave Stone interior décor and Welbeck Birch cabinetry)



Stock up and store plenty of groceries for the road. After working up an appetite, slow down and enjoy a home-cooked meal or satisfying snack in the well equipped galley.

Sit back and relax at the end of an action-packed day with an optional 20" flat screen television and convenient front access video game port. A standard 5.1 RCA Home Theater System provides theater style audio.



Keep insects out and let fresh air in with the one hand operation, auto-retract screen room option. Simply pull the screen handle down to the floor, and click into the floor mounted retainers. No difficult snaps, ties, or zippers to fumble with.

Stay out late! The dual axis power remote spotlight option, mounted on the rear of the coach, is the perfect accessory to brighten up the night sky. Operate the light from a distance with the hand held wireless remote.



Adrenaline Leading the Industry

Capacities

- 200 Gallon fresh water capacity
- 80 lb. LP bottle capacity
- Dual 30 gallon fuel reservoirs (Option)
- 5.5Kw Onan Marquis Gold Generator (Option)
- 16 Gallon effective water heater (Option)
- 75 Amp power converter
- Slide tray with room for up to three batteries

Fresh Water Capacity

Adrenaline
200 gallons
(150 gal. on 228FD)

Competitors
100 Gallons

Construction

- Full aluminum cage construction
- 10 Inch I-Beam chassis
- Heavy-duty 6,000 lb. axles
- 16 Inch Goodyear® radial tires



An aerodynamic molded bottle cover houses the dual 40 lb. LP tanks which are easily accessible through the hinged lid top. (Travel Trailers)

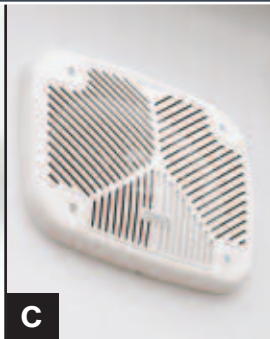
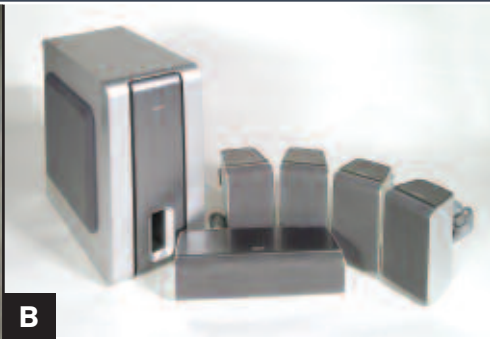
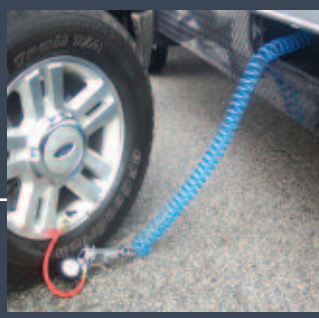


The optional dual electric track queen beds greatly expand Adrenaline's sleeping capacity. During the day, the beds tuck up and out of the way, leaving a convenient work/living space in the cargo area with 6'5" of headroom. When it's time for bed, the track beds lower with push button ease. (Shown with Granite Dunes interior)

Adjustable track style tie downs line the cargo floor area allowing you to decide where to secure your toys.



The optional 120 psi air compressor features a 3-gallon tank with air hose and inflator kit.



- A.** Adrenaline's central command panel lets you check the generator and gas gauges, monitor panel, and lighting switches all in one convenient location.
- B.** Crank up the tunes! Every Adrenaline boasts a standard 6-speaker surround sound home theatre system with a CD/DVD player.
- C.** Exterior 3-way Kenwood® 6" x 9" marine grade speakers deliver your favorite music or sports while taking a break or tinkering with your toys. (optional)



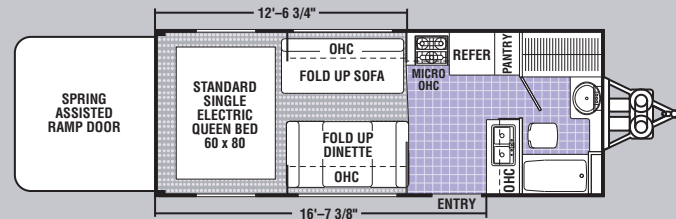
Play longer with the built in optional fueling station featuring dual 30 gallon fuel tanks. Utilize one tank for traditional unleaded fuel, plus another tank for premium racing fuel or a gas/oil mix. It's easy to change tanks with the flip of a switch and gas up your toys with the attached fuel pump.



The cargo door features heavy duty, steel coil hinges designed to support the ramp when opened or closed, while eliminating the need for exposed cables and springs. Radius corners on the ramp door improve strength and a Grip Star™ ramp surface provides sure footing rain or shine. When its time to head out, the posi-lock latches provide a tight door seal. Integrated locks keep your toys secure and eliminate the need for padlocks.



Travel Trailers



228 FB

Standard Features

INTERIOR AND DÉCOR

- Granite Thermofoil Cabinet Doors
- Linoleum Flooring (Living Area)
- Fuel Resistant Seamless TPO Cargo Area Flooring
- Designer Box Valences
- LP Leak Alarm
- CO Leak Alarm
- Fire Extinguisher
- Smoke Detector
- Indoor/Outdoor Fold Up Sofa (Except 400 DS)
- Hide-A-Bed Sofa (400 DS)
- Fold Up Dinette w/Skirts (Except 400 DS)
- Adjustable Height Indoor/Outdoor Fold Up Dinette Table (Except 400 DS)
- Boston Innerspring Booth Dinette (400 DS)
- Track Style Tie Downs
- Diamond Plate Protected Lower Corners in Cargo Area

GALLEY

- 3-Burner (High Output) Range
- Large Double Door Refrigerator
- Central Command Panel
- Residential Microwave Oven
- Fluorescent Light Above Kitchen Sink
- Stainless Steel Double Bowl Sink
- Undersink Silverware Drawer
- High Spout Kitchen Faucet

BATH AND WATER

- Linen Cabinet
- Porcelain Toilet w/Foot Pedal
- One-Piece ABS Tub Surround
- Power Bath Vent
- 6-Gallon Gas/Electric E.I. Water Heater
- Water Heater By-Pass Valve
- Demand Water Pump
- 200 Gallon Fresh Water Tank w/Quick Drain (150 Gallon on 228 FB)
- Glass Shower Door

SLEEPING

- Residential 60" x 80" Queen Bed
- Innerspring Mattress
- Designer Bedspread
- Bedroom TV Shelf
- Directional Overhead Reading Lights

ELECTRICAL/HEATING/AC

- GFI Circuit
- 50 Amp. Power Cord
- 75 Amp. Electronic Converter
- Patio Light
- LP Hitch Light
- Lights Above Ramp Door
- LED Clearance, CHMSL and Brake, Turn, Tail Light Package
- Dual 40 lb. LP Bottles w/Auto Change-Over
- 30,000 BTU E.I. Furnace
- 13,500 BTU Ducted Air Conditioner w/Quick Cool Feature

- Pre-Wired for 2nd Air Conditioner (FW Only)
- Television Antenna
- Cable TV Jack
- Prewired for Satellite Dish
- 6 Speaker Surround Sound w/DVD/CD Player

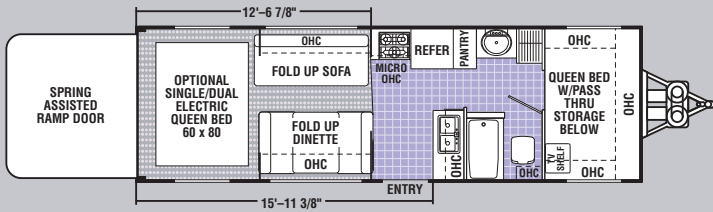
EXTERIOR/CONSTRUCTION

- 102" Wide Body Design
- Dove Tail Cargo Floor at Ramp Door
- 2,500 lb Rated Ramp Door
- Posi Lock Ramp Door Closure System
- Grip Star Slip Resistant Ramp Door Covering
- Lift Assist Steel Coil Ramp Door Hinges
- Flush Cargo Floor (No Intrusive Wheel Wells)

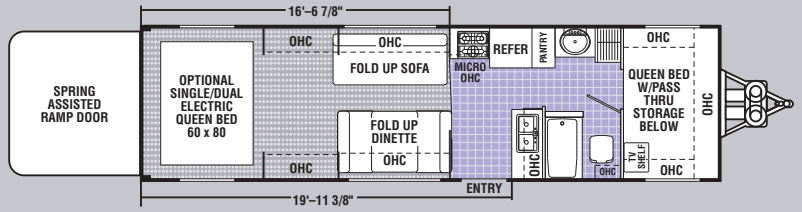
- Tinted Safety Glass Windows
- Fiberglass Sidewalls
- Aluminum Framed Laminated Walls and Floor
- Aluminum Framed Crowned Roof
- 6,000 lb. EZ Lube Wide Track Axles
- Tandem Axles (228 FB, 274 FS)
- Triple Axles (314 FS, 360 BS, 400 BS, 400 DS)
- 16" Load Range "D" Goodyear Radial Tires
- Break Away Switch
- 4 - Retractable Stabilizer Jacks (TT)
- 2 - Retractable Stabilizer Jacks (FW)
- Large Pass-Through Storage
- Patio Awning
- Diamond Plate Front Stoneguard (TT)
- Aerodynamic LP Bottle Cover (TT)
- Molded Front and Rear Spoilers (TT)
- Molded Front Cap and Rear Spoiler (FW)

2007 Adrenaline Travel Trailers/Fifth Wheels	228 FB TT	274 FS TT	314 FS TT	360 BS FW	400 BS FW	400 DS FW
Base Weight	7,314	8,132	9,256	11,609	11,945†	12,943
GVWR (lbs.)	13,000	13,000	14,000	18,000	18,000	18,000
Carrying Capacity	5,686	4,868	4,744	6,391	6,055†	5,057
Axle Weight	6,314	6,472	7,721	8,304	8,895†	9,643
Interior Height	8' 0"	8' 0"	8' 0"	8' 10"	8' 10"	8' 10"
Exterior Height*	11' 3"	11' 3"	11' 3"	12'	12'	12' 2"
Exterior Length	27' 0"	31' 7"	35' 8"	38' 2"	42' 2"	41' 5"
Exterior Width	8' 6"	8' 6"	8' 6"	8' 6"	8' 6"	8' 6"
Sleeping Capacity	6/8	6/10	6/10	6/10	6/14	6/10
Fresh Water Capacity (gal.)**	150	200	200	200	200	200
Waste Water Capacity (gal.)	60	60	60	60	60	60
Grey Water Capacity (gal.)	70	70	70	70	70	140
Water Heater Capacity (gal.)	6	6	6	6	6	6
LP Gas Capacity (lbs.)	80	80	80	80	80	80
Furnace Rating (x 1,000) BTU	30	30	30	30	30	30
Tire Size	●	●	●	●	●	●
Awning Size	18'	20'	20'	21'	21'	21'

† = Estimated *Does not include roof A/C **Does not include water heater capacity ● ST235/80R16D



274 FB



314 FS Available with option: B

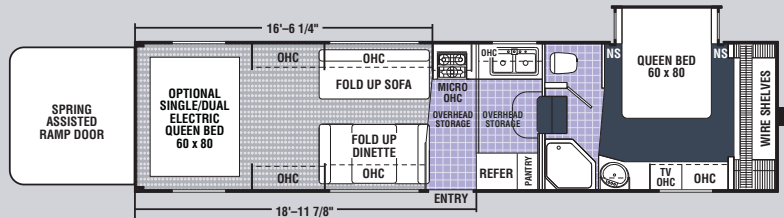
Optional Features

- Welbeck Birch Cabinetry
- Electric Trac Queen Bed (Std. 228 FB)
- Double Electric Trac Queen Beds
- Vapor Barrier Divider Wall w/Loft Bed (360 BS, 400 BS - Std. 400 DS)
- Vapor Barrier Divider Wall (314 FS, 360 BS, 400 BS, 400 DS)
- Roll Up Carpeting
- 20" Flatscreen Television (Except 400 DS)
- 27" Television (400 DS)
- 16-Gallon Effective Gas/Electric Water Heater
- Electric Heated Holding Tanks
- Air Compressor w/3 Gallon Tank
- 2nd Ducted 13,500 BTU Roof Air Conditioner (FW)
- Generator Prep
- 5.5 Gas Generator
- 5.5 Gas Generator and Fuel Pump Station w/Two 30 Gallon Tanks
- Gas Fuel Pump Station and 30 Gallon Tank
- Remote Controlled Spotlight on Roof
- Tribal Exterior Graphics Package
- Owners Information Package (Consists of Maintenance Manual, Trouble Shooting Guide, Warranty Information Booklet and Carrying Case)

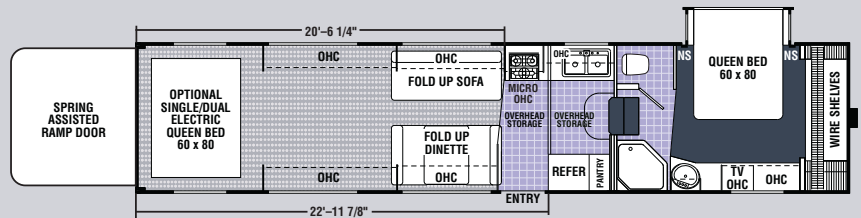
- "RUSH" Package Includes:**
 - Skylight over Tub
 - Range Cover
 - Sink Cover
 - 2 Kenwood 6" x 9" 3-Way Marine Grade Exterior Speakers
 - Ladder
 - Quad Exterior Light Package (2 Flush Mount Halogen Floodlights and 2 Hella Halogen Lights Over Ramp Door)
 - Spare Tire Kit - 16"
 - Outside Shower
 - Black Tank Flush
 - Large Folding Assist Entry Door Handle
 - Shock Absorbers
 - Power Jack (TT) or Dual Motor Power Jacks (FW)
 - Retractable Pull Down Rear Screen Door
 - Fantastic Fan in Cargo Area
 - 15,000 BTU Ducted Roof Air Conditioner w/Quick Cool Feature
 - (2) Extra 12 Volt Outlets



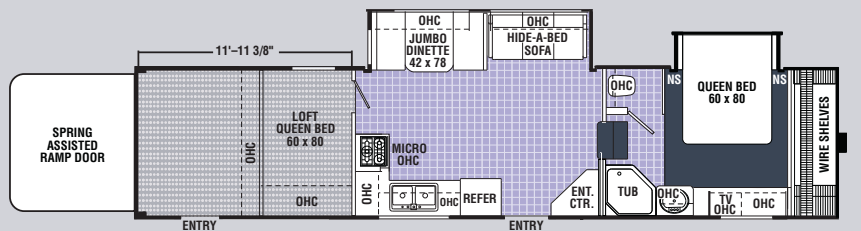
Fifth Wheels



360 BS Available with options: A, B



400 BS Available with options: A, B



400 DS Available with option: B

Base Weight: The weight of the unit with no fluids, cargo, optional equipment or accessories.

GVWR (Gross Vehicle Weight Rating): The maximum permissible weight of the unit, including the Base Weight plus all fluids, cargo, optional equipment and accessories. For safety and product performance, do not exceed the GVWR.

Wider Widths: Numerous Coachmen floorplans feature the "wide body" design concept, which gives you significantly enhanced interior living space and innovative floorplans.

In making your purchase decision, you should be aware that a few states restrict access on some or all roads within the state to vehicle with a maximum 96" width, although special road usage permits may be available. Vehicles up to 102" in width are permitted in the vast majority of states. You should confirm the road usage laws in the states of interest to you before making your purchase decision. If width is of concern to you, we invite you to consider the broad array of other Coachmen models offered in the standard 96" width.

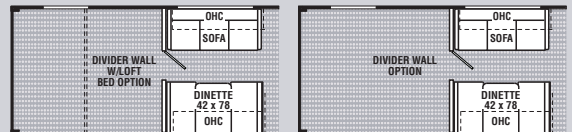
Carrying Capacity: The difference between the Base Weight and the GVWR. This is the amount of weight available for all fluids, cargo, optional equipment and accessories. The actual "loaded" weight will depend on the equipped unit and the owner's individual choice of cargo, etc.

All information contained in this brochure is believed to be accurate at the time of publication. However, during the model year, it may be necessary to make revisions and Coachmen reserves the right to make all such changes without notice, including changes in prices, colors, materials, equipment and specifications, as well as the addition of new models and the discontinuance of models shown in this brochure. Therefore, please consult with your Coachmen dealer and confirm the existence of any materials, design or specifications that are material to your purchase decision.

Key:

- Vinyl
- Carpet
- Fuel Resistant Flooring

Available Options:



A

B

The Adrenaline Team

2007

Adrenaline XLV

EXTREME LIFESTYLE VEHICLE / Travel Trailers & Fifth Wheels

Discover the Coachmen Advantages

Service After the Sale

Industry Leading Buckstopper™ Warranty

Coachmen's exclusive Buckstopper™ Limited Warranty provides coverage on most parts, components and appliances. Coachmen stands behind their product and is supported by a network of over 300 service centers.

Two Year Structural and Major Components Manufacturer's Warranty

Coachmen provides a two-year structural and major components manufacturer's warranty, along with a complete written Warranty Summary Guide, for your peace of mind.

Comprehensive Owner's Information

For your convenience we offer published materials on key equipment and options, as well as information pertaining to the function of important components. We also offer a true Trouble Shooting and Maintenance Guide for the simple answers to frequently asked questions.



Toll Free Service Numbers

These toll free phone numbers provide you with direct access to a Coachmen RV Service Representative.

Dealer Support Tools

Coachmen makes sure that their dealers are well equipped and trained to service your needs with: Systems Manuals, PDI Manuals, Electronic Parts Catalogs, Coach-Link® "On-Line" Electronic Dealer Communication System, and continual service training.

Service Support Center Web Site

Coachmen provides you access to key information 24-hours a day through the Internet. On-line you can find a Service Dealer Locator, Maintenance Information, Trouble Shooting Information, Product Warranty Information, Customer "E-Assistance", Frequently Asked Questions (FAQ's), and Publications ordering dating back to 1972 models.

Priority Parts Ordering

Coachmen provides a program for overnight parts shipment in critical repair situations.

Coachmen Caravan Camping Club™

Coachmen Caravan Camping Club is your ticket to making friends for life. Share old stories and make new, in the company of fellow Coachmen Caravan members. With the purchase of a Coachmen RV, you are invited to join the nation's largest manufacturer sponsored RV clubs. As part of the Coachmen Caravan family, you will receive incredible membership benefits that will help to ensure your safety and enjoyment throughout your RV experiences. Enjoy your Coachmen RV more with the Coachmen Caravan Camping Club.



Leader to the Great Outdoors®

Coachmen Recreational Vehicle Company, LLC ■ P.O. Box 30 Middlebury, IN 46540 ■ P.O. Box 948, Fitzgerald, GA 31750

Visit our website at: www.coachmenrv.com

©2005 Coachmen Recreational Vehicle Company, LLC - All rights reserved. Litho in USA 11/05

