

2007  
CLASS C  
MOTORHOMES

# BTOURING CRUISER

BY CONQUEST MOTORHOMES®

DEDICATED TO QUALITY,  
INNOVATION AND  
VALUE.

# BTOURING CRUISER

BY CONQUEST MOTORHOMES®





**SUN ROOM • MODEL 5291 STD.**

Patented

## **SPACIOUS LIVING...**

Open living areas that incorporate large slide rooms and residential style furniture make home away from home very comfortable.

Gulf Stream's exclusive sun room slideout is an industry first. Our innovative sun room gives you a wide range of sight from the curb side of the coach and opens up the coach to eliminate that boxed in feeling other minihomes give you.



**BEDROOM • MODEL 5290**



**BEDROOM • MODEL 5290**

## **BEDROOM...**

Enormous wardrobe, abundant drawer storage, flat screen TV and beautiful decor create an inviting area for rest and relaxation.



**GALLEY • MODEL 5290**

## **GALLEY CONVENIENCE...**

Our wide-open galley offers all the comforts of your kitchen at home. 3-burner high performance range; 2-door, 2-way refrigerator and large convection microwave, you will be able to prepare any of your family's favorite meals.

## **Driver Convenience PACKAGE**

Make driving your BT Cruiser effortless with the addition of the driver convenience package. This option will give even the most timid driver confidence while backing up with reverse obstacle sensing and backup monitor. Keyless entry also included in this package facilitates easy entry and secured exit of your new motor home.

Driver Convenience Package Available on Ford Chassis Only.



Upgrade your already feature packed B Touring cruiser with the all new XL Package. The XL Package gives you more high end features that are generally only found in high dollar Class A Motorhomes. Package Includes: Solid Surface Kitchen Countertops, Fluorescent Lighting, Hard Rock Maple Cabinets, Vinyl Ceiling, G-sound Surround Sound Speakers with DVD Player and Burled Woodgrain Dash. (Not pictured, optional Optima leather electric sofa & six way power Optima leather driver & passenger seats)

XL Edition not available on model 5211. Electric sofa not available on model 5291



## SOLID HARDWOOD CABINETRY



Our residential style cabinets are constructed of solid hardwood doors and fronts that are predrilled and screwed then they are stained and top coated with a furniture grade finish that provides long lasting beauty and durability as well as adding strength and quietness to your motorhome.

Other companies use wrapped cabinet fronts prone to peeling, fading and tearing. The softer composite wood used does not hold screws as well as hardwood resulting in loss of strength and squeaking. Discoloration will degrade the beauty and lower the value of the motorhome.



Seamless, carpeted, galvanized steel storage compartments safely cradle your valuables. Rust protective paint and foam sealed for extended life and a quiet ride.



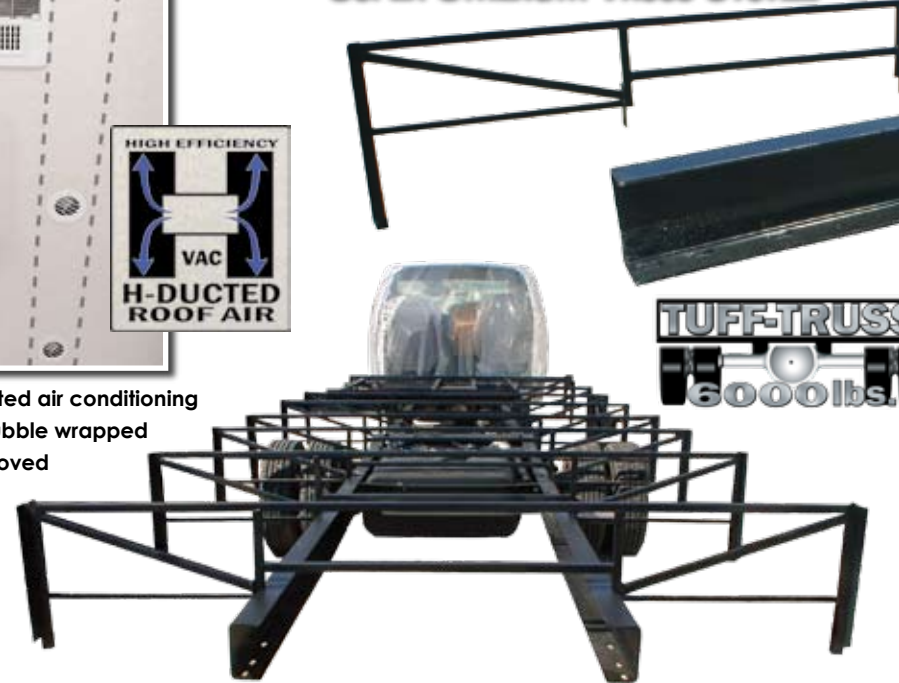
Unique self storing privacy divider featuring quick and simple setup.



Dual metal H-Ducted air conditioning system with foil bubble wrapped insulation for improved climate control.



## SUPER STRENGTH TRUSS SYSTEM



**Excellent Weathering** - Maintaining the vehicle's quality appearance enhances its resale value.

**Tear Resistance** - Unlike rubber roofing, Flexroofs hard abuse resistant finish resists tearing, a condition that can cause leaks and lead to expensive repair

**Low Maintenance** - Road grime can easily be removed with normal cleaning maintenance. Rubber chalking due to solar breakdown of the roof surface is eliminated, preserving the original appearance and resale value of the vehicle.

**Stain Resistance** - Fiberglass Flexroof is designed to resist staining and maintain its quality appearance.

**Structural Integrity** - Unlike conventional EPDM rubber roof membranes, Flexroof is a structural component of the roof system.

**Textured Fiberglass** - Helps dissipate heat and is slip resistant. In addition, it helps prevent tree limbs from tearing or scratching your roof.



# Cradle of Strength



## 6" C CHANNEL EXTENSION

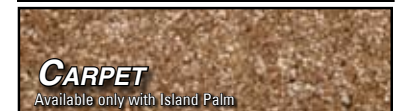
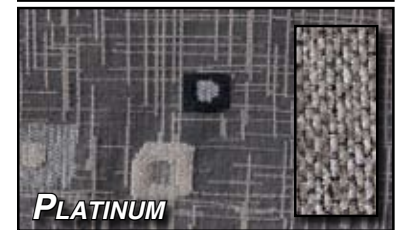
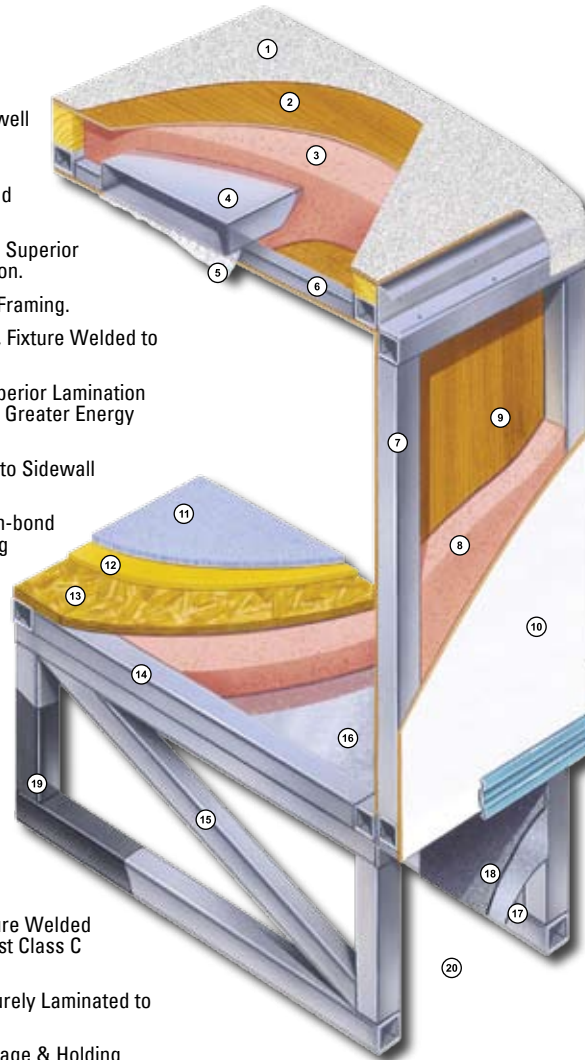
The super strength truss system is unmatched in the class C industry. The structural subfloor foundation begins by welding a network of integrated steel trusses to the chassis rail. Specifically designed to distribute and transfer the tremendous forces from the coach to the chassis rail these trusses are individually tested to withstand 6,000 pounds each.

When the chassis is stretched, Gulf Stream stands alone in the industry by using a full 6" C channel extension versus the traditional 4" or less. This practice adds to the strength of the foundation and offers peace of mind that towing is safe on an extension that is true to the chassis.



Unlike traditional plywood and foam seating Comfort Plus Seating features the strength of steel and the comfort of a sprung dinette cushion.

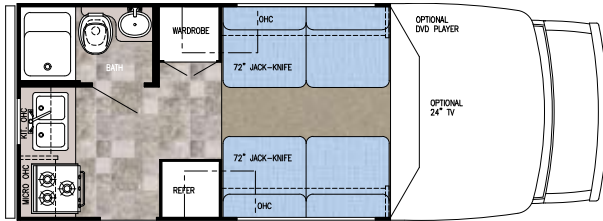
1. Seamless Fiberglass Roof For Greater Energy Efficiency and Dependability.
2. Luan Decking for Additional Strength.
3. Molded, High Density EPS (Expanded Polystyrene) Roof Brick Insulation - Provided Consistent Insulation Value as well as Superior Dimensional Rigidity.
4. One-Piece Formed Aluminum Air Conditioning Duct, Completely Surrounded By EPS Insulation.
5. Bubble-Wrapped Foil Insulation Provides Superior Insulation and Helps Prevent Condensation.
6. Rugged Welded Tubular Aluminum Roof Framing.
7. Rugged Heavy-Gauge Tubular Aluminum, Fixture Welded to Form the Sidewall Framing.
8. High-Density EPS Insulation Provides Superior Lamination and Bonding Characteristics and Insures Greater Energy Efficiency.
9. Interior Wall Panels Securely Laminated to Sidewall Framing.
10. "Super Slick" Fiberglass Exterior Vacuum-bond Laminated to Sidewall Framing for Lasting Beauty and Durability. (Option)
11. High-Quality Stain-Resistant Carpeting Available in Designer Coordinated Colors.
12. Extra-Thick Padding Under Carpet Provides Extra Comfort and Increases Carpet Durability.
13. Floor Decking Laminated to Steel Floor Structure Assures a Quiet, Long-Lasting Rigid Floor and comes with a 10-Year Warranty.
14. Heavy-Gauge Tubular Steel Framing, Fixture Welded for Extra Strength and Stability.
15. Heavy-gauge Tubular Steel Framed, Fixture Welded Floor Truss System Provides the Strongest Class C Foundation in the Industry.
16. Seamless Layer of Galvanized Steel Securely Laminated to the Steel Floor Framing.
17. Galvanized Steel Used to Form Each Storage & Holding Compartment.
18. Durable All-Weather Carpeting Completes Each Accessible Storage Compartment, Providing Extra Protection for Luggage and Valuables.
19. Rust-Prohibitive Paint Coating Applied to All Steel Framing Assures Corrosion and Rust Protection.
20. The Industry's Strongest, Most Spacious Exterior Storage Compartments.



# BTOURING CRUISER

BY CONQUEST MOTORHOMES®

## MODEL 5211



### Specifications

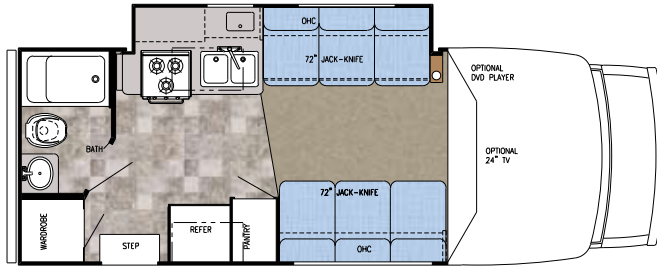
Chassis	Ford E-350
Engine	V-10, 6.8 Liter
GVWR	10,700
Wheelbase	138"
Length	22' 1"
Exterior Height	10' 4"
Exterior Width	96"
Interior Height	77"
Interior Width	91.25"

### Capacities

Fuel	37 Gal.
Black	30 Gal.
Grey	30 Gal.
Fresh	38 Gal
LP Gas Tank	42 Lbs.
Furnace	25,000 btu.
Water Heater	6 Gal.
Basement Storage	11.8 cu. ft.

Optional: Chevy V-8 (gvwr 12,300 Workhorse), Dinette/Sofa, Barrel Chairs/Sofa

## MODEL 5231



### Specifications

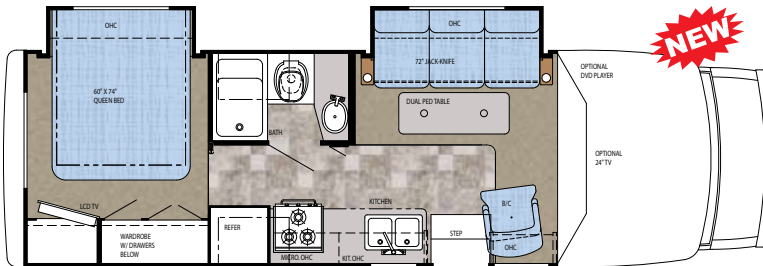
Chassis	Ford E-450
Engine	V-10, 6.8 Liter
GVWR	14,050
Wheelbase	168"
Length	24' 1"
Exterior Height	10' 4"
Exterior Width	96"
Interior Height	77"
Interior Width	91.25"

### Capacities

Fuel	55 Gal.
Black	30 Gal.
Grey	30 Gal.
Fresh	38 Gal
LP Gas Tank	42 Lbs.
Furnace	25,000 btu.
Water Heater	6 Gal.
Basement Storage	9.7 cu. ft.

Optional: Chevy V-8 (gvwr 14,050 Workhorse), Dinette/Sofa

## MODEL 5272



### Specifications

Chassis	Ford E-450
Engine	V-10, 6.8 Liter
GVWR	14,050
Wheelbase	196"
Length	27' 11"
Exterior Height	10' 4"
Exterior Width	96"
Interior Height	77"
Interior Width	91.25"

### Capacities

Fuel	55 Gal.
Black	38 Gal.
Grey	38 Gal.
Fresh	38 Gal
LP Gas Tank	42 Lbs.
Furnace	25,000 btu.
Water Heater	6 Gal.
Basement Storage	26.27 cu. ft.

Optional: Comfort Booth Dinette



STANDARD EXTERIOR GRAPHICS

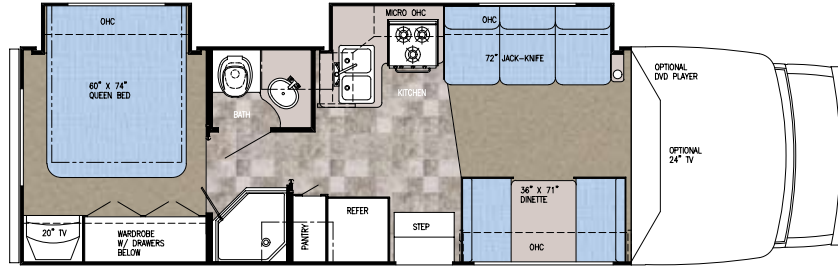


OPTIONAL PAINTED SKIRT



OPTIONAL FULL PAINT GRAPHICS

## MODEL 5290



### Specifications

Chassis	Ford E-450
Engine	V-10, 6.8 Liter
GVWR	14,050
Wheelbase	208"
Length	30' 6"
Exterior Height	10' 4"
Exterior Width	96"
Interior Height	77"
Interior Width	91.25"

### Capacities

Fuel	55 Gal.
Black	30 Gal.
Grey	38 Gal.
Fresh	38 Gal.
LP Gas Tank	42 Lbs.
Furnace	30,000 btu.
Water Heater	6 Gal.
Basement Storage	43.1 cu. ft.

### CHASSIS

- 138" WB FORD E-35, V-10, 6.8 L ENG., 35 GAL FUEL TANK, POWER WINDOWS & LOCKS (5211)
- 158" WB, FORD E-45 V-10, 6.8L ENG., 55 GAL FUEL TANK POWER LOCKS & WINDOWS (NA 5211)

### Exterior

- SLIDE OUT ROOM (SOFA) (5272)
- SLIDE OUT ROOM (BEDROOM) (5272 5290 5291)
- SLIDE OUT ROOM (KITCHEN/SOFA) (5231 5290 5291)
- ATRIUM SLIDE OUT ROOM (DINETTE) (5291)
- WELDED ALUMINUM CAGE
- FIBERGLASS FRONT CAP & WINGS
- FIBERGLASS REAR CAP
- LAMINATED FLOOR STEEL FRAME FLOOR W/METAL UNDERBELLY
- SLIDE OUT TOPPER (5231)
- (2) SLIDE OUT TOPPERS (5272 5290)
- (3) SLIDE OUT TOPPERS (5291)
- REAR WINDOW (5291)
- RADIUS TINTED WINDOWS
- STAINLESS STEEL WHEEL INSERTS
- ACRYLIC ENTRY DOOR ASSIST BAR
- FOAM SEAL & UNDERCOATING

### Decor

- HARD ROCK MAPLE INTERIOR W/M&T DOORS
- FABRIC CEILING
- WINDOW TREATMENTS
- OVERHEAD READING LIGHTS
- FLUORESCENT LIGHT OVER KITCHEN SINK

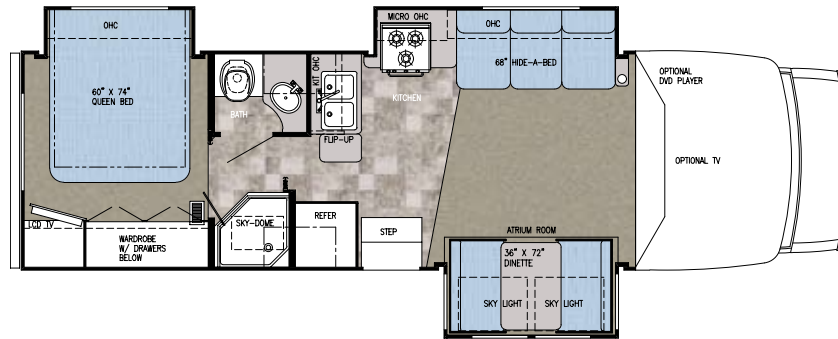
### Heating & Cooling

- DASH A/C
- 11,000 BTU LOW PROFILE DUCTED AC (5211 5231)
- 15,000 BTU LOW PROFILE DUCTED AC (5272 5290 5291)
- 25,000 BTU FURNACE (5211 5231)
- 30,000 BTU FURNACE (5272 5290 5291)

### Bath

- BI-FOLD SHOWER DOOR & SURROUND (5211 5231)
- NEO-ANGLE GLASS SHOWER DOOR (5272 5290 5291)
- POWER BATH VENT

## MODEL 5291



### Specifications

Chassis	Ford E-450
Engine	V-10, 6.8 Liter
GVWR	14,050
Wheelbase	208"
Length	30' 6"
Exterior Height	10' 4"
Exterior Width	96"
Interior Height	77"
Interior Width	91.25"

### Capacities

Fuel	55 Gal.
Black	30 Gal.
Grey	38 Gal.
Fresh	38 Gal.
LP Gas Tank	42 Lbs.
Furnace	30,000 btu.
Water Heater	6 Gal.
Basement Storage	39.75 cu. ft.

### Electrical

- TV CABINET
- CD PLAYER
- PLATINUM LIGHTS IN BEDROOM (5272 5290 5291)
- MONITOR PANEL
- GENERATOR SWITCH & HOUR METER
- TV ANTENNA W/AMP & BOOST

### Furnishings

- 2-WAY D/P SEATS
- D/S SOFA (NA 5291)
- P/S SOFA (5211 5231)
- D/S H-A-B SOFA (5291)
- SINGLE BARREL CHAIR (PS)(5272)
- P/S DINETTE & DS JACK KNIFE SOFA (5290)
- DINETTE BOOTH BED (PS) (5291)

### Appliances

- OTR CONVECTION MICROWAVE W/3-BURNER TOP
- 6 GAL ELECTRONIC IGNITION WATER HEATER W/BY-PASS VALVE
- SM. 2-WAY DBL DOOR REFER
- LP GAS TANK
- CARBON MONOXIDE DETECTOR
- LP LEAK DETECTOR

### Power

- AUXILIARY BATTERY
- CONVERTER W/CHARGER & AUTO CHANGE OVER KIT
- GENERATOR PREP
- BATTERY DISCONNECT
- 30' POWER CORD



Holding tank capacities (both fresh water and waste water) are volume calculations based on overall tank dimensions. The capacities may differ from published calculations due to the result of tank installation, tank material variation, tank fitting locations and other plumbing variables.

### Popular Options

- TOURINGPACKAGE UPGRADE (REQ) FIBERGLASS RUNNING BOARDS FIBERGLASS ROOF HARDWOOD STILES ELECTRIC STEP H-DUAL DUCT SYSTEM
- XLUPGRADE PACKAGE (NA 5211) WOOD DASH (Ford Only) FLUORESCENT LIGHTING SOLID SURFACE KITCHEN COUNTERTOP G-SOUND W/DVD VINYL CEILING
- DRIVERCONVENIENCE PKG. (Ford Only) BACKUP MONITOR / BACKUP ALARM KEYLESS ENTRY SYSTEM
- 139"WB CHEVY, VORTEC 6.0 ENGINE, 35 GAL FUEL TANK (5211)
- FORDTURBO DIESEL CHASSIS (5231 5272 5290)
- OUTSIDE SHOWER
- SPARE TIRE & CARRIER
- UPGRADED OAK DASH (Ford Only)
- ROLL GOODS THROUGHOUT
- HEATED HOLDING TANKS
- REAR LADDER
- 5000 LB HITCH W/PLUG
- AWNING
- SLICKFIBERGLASS EXTERIOR WALLS
- EXTERIOR PAINTED SKIRT AREA
- FULLPAINT W/SUPER SLICK EXTERIOR E-45 CHASSIS (NA 5211)

- HEATED & REMOTE MIRRORS
- LCDCOLOR TV IN BEDROOM (5272, 5290, 5291)
- FLAT SCREEN COLOR TV WITH REMOTE
- DVD PLAYER (NA W/XL PKG)
- EMERGENCY START SWITCH
- FLUORESCENT CEILING LIGHT.
- PHONE JACK
- 4.0 ONAN GENERATOR
- 3.6ONAN GENERATOR W/LP CONVERSION (REQUIRES DSL CHASSIS) (5231 5250 5270 5290)
- 4.0 GENERAC GENERATOR
- 6-WAYPOWER OPTIMA D/P SEATS IPO 2-WAY CLOTH SEATS (Ford Only)
- OPTIMA LEATHER POWER L SOFA
- OPTIMA LEATHER H-A-B SOFA
- COMFORTBOOTH DINETTE IPO PS SOFA (5211, 5231)
- COMFORTBOOTH DINETTE IPO DS SOFA (5272)
- RANGE COVER (NA W/XL PKG)

DEDICATED TO QUALITY,  
INNOVATION AND  
VALUE.

**BTOURING  
CRUISER**  
BY CONQUEST MOTORHOMES®

### Gulf Stream Coach

has been a manufacturer of recreational vehicles for over 20 years. Our slogan, "Family Value", speaks to our family-owned company, the value offered in our products and to our customers.

We use advanced manufacturing techniques to build everything from entry-level travel trailers to luxury motorhomes. We offer the largest product line in the industry.

RV dealers and consumers look to Gulf Stream for high-value products offering quality construction, innovative features, contemporary design, unmatched service and on-going support.

We'd love to have you as part of the family



The Gulf Streamers RV Club is a valuable benefit to all Gulf Stream owners. Members enjoy staying active and participating in the various rallies and caravans offered throughout the United States and Canada. The Main Stream, the club Magazine, with up-to-date product information, service tips and company highlights. Members benefit from the Emergency Road Service and Gulf Streamers Insurance options. Both are available at competitive rates with friendly, reliable service. The 10% discount program at campgrounds throughout the U.S. and Canada. As a member, you'll receive discounts at National Theme Parks and special attractions, including RV and travel guides, directories and magazines. Gulf Streamers spend time touring attractions, enjoying fabulous meals, taking in area highlights and shows to help make the most out of your RV experience. Special rallies throughout the year include Gulf Stream supplier seminars, complimentary minor repairs by Gulf Stream technicians, Gulf Stream dealer product displays and round table discussions to voice your product improvement ideas.



POST OFFICE BOX 1005  NAPPANEE, IN 46550  
• YOUR GULF STREAM COACH DEALER •

**VISIT** [WWW.GULFSTREAMRV.COM](http://WWW.GULFSTREAMRV.COM) **OR CALL** 1-800-765-8787-EXT. 3288

For more information and available options, contact your local Gulf Stream dealer, [www.gulfstreamrv.com](http://www.gulfstreamrv.com) or Gulf Stream Coach, Inc. Gulf Stream Coach, Inc., reserves the right to make changes in prices, colors, materials, components and specifications and to discontinue models at any time without notice or obligation. Gulf Stream Coach, Inc., assumes no responsibility for any error in type or print reproduction of specifications or floorplans in this brochure. Photographs may show equipment or items that are optional and are not included in the purchase price of the coach. Test drive and review a current model at your nearest Gulf Stream dealer. © 2002 Gulf Stream Coach, Inc., Nappanee, Indiana U.S.A.